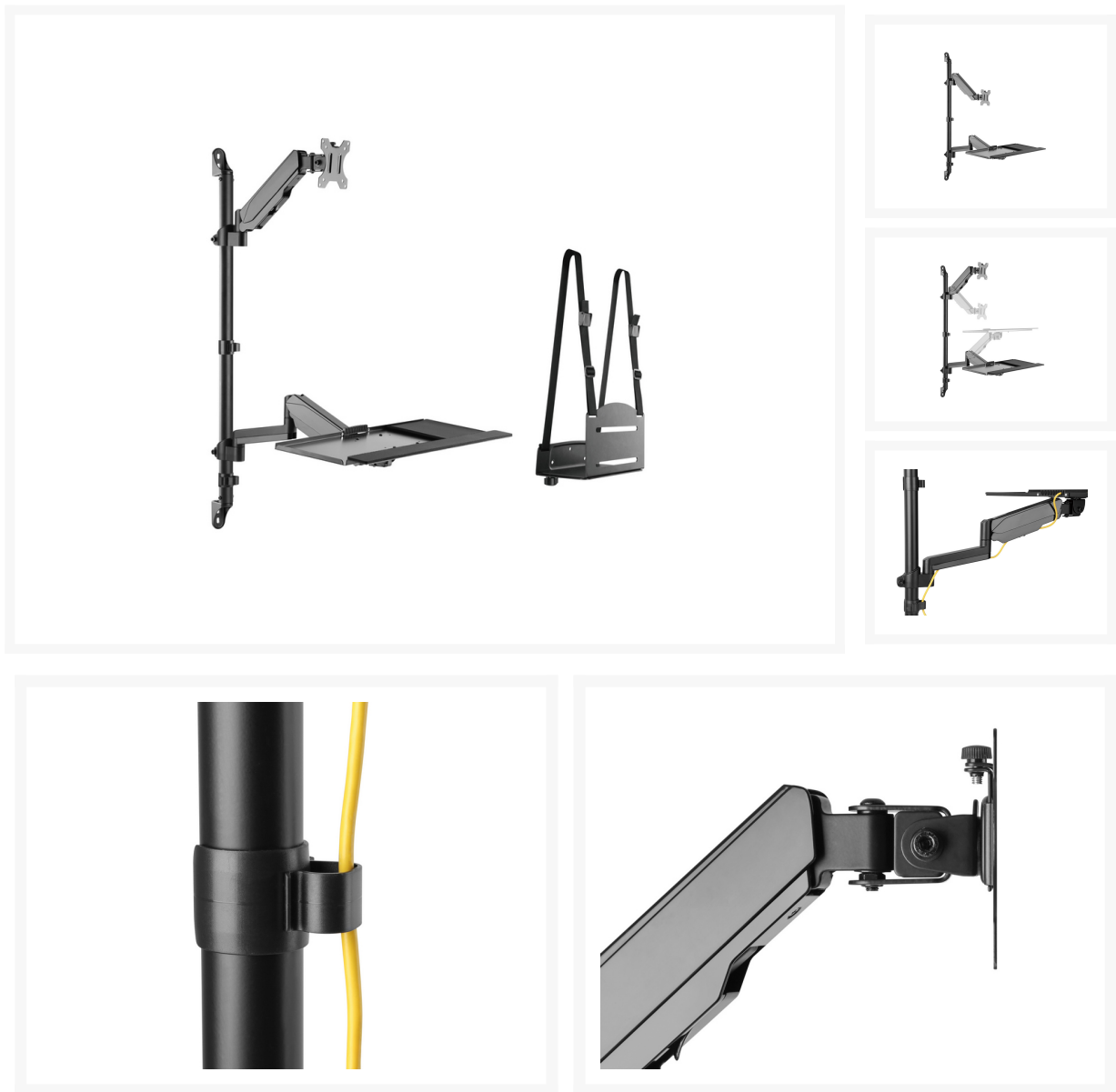
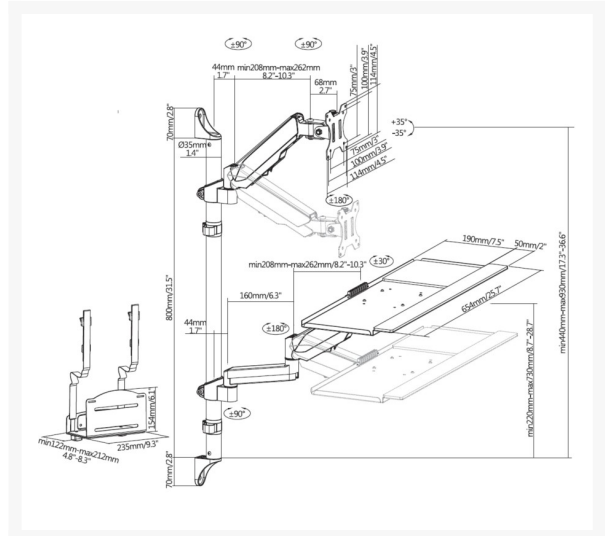
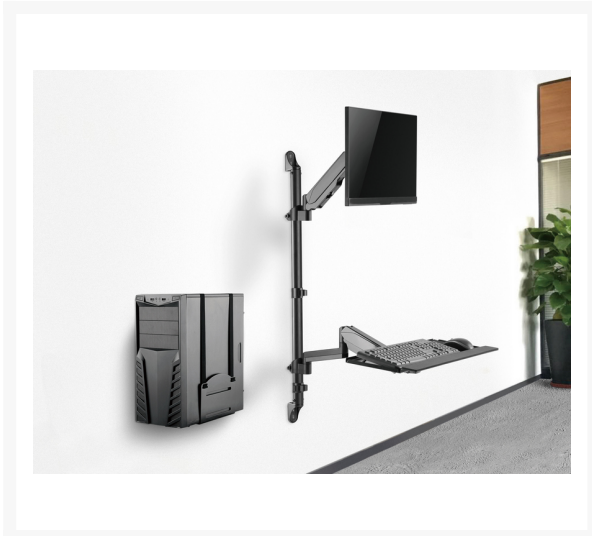
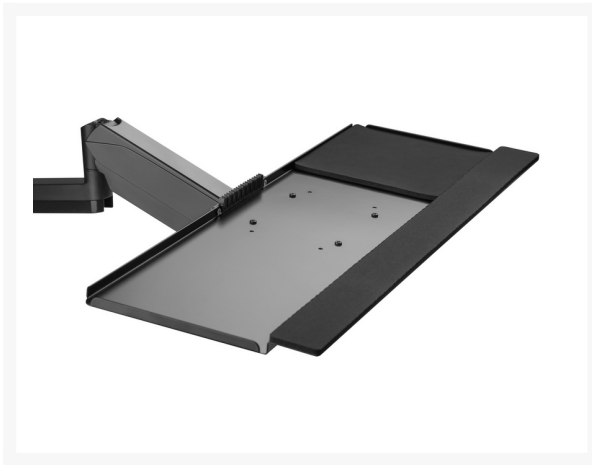


650170 17"-32" Single Monitor Wall-Mounted Workstation

Product Images





Short Description

- Max. Load Capacity: 8kg
- Keyboard Tray Load Capacity: 1kg
- Max. VESA: 100x100
- Gas spring structure offers perfect counterbalance presentation in all directions
- Full-Motion Mechanism: for the most optimized viewing position
- Upgraded Keyboard Tray: provides comfort for your wrists
- VESA standards compliant

- Free-tilting design for multiple monitor viewing angles
- Detachable VESA Plate Design
- Portrait or Landscape viewing : fits any installation
- Cable clips keep cables organized and protected
- Included CPU Mount: PC computer on the wall to save space

Description

The Equip 650170 17"-32" Single Monitor Wall-Mounted Workstation is a space-saving and ergonomic solution for creating a streamlined and efficient workspace. Designed to support monitors ranging from 17 inches to 32 inches in size, this wall-mounted workstation is ideal for those who want to free up desk space and customize their viewing setup.

Featuring a sturdy and adjustable design, the wall-mounted workstation allows you to position your monitor at the desired height and angle for optimal comfort and productivity. This is particularly useful in environments where floor space is limited, such as offices, studios, or home offices.

Installation is typically straightforward, and the mount is compatible with various wall surfaces. The single-arm design provides flexibility in adjusting the monitor to your preferred viewing position. Additionally, integrated cable management helps keep your workspace tidy by organizing and concealing cables.

Additional Information

Harmonized System (HS) code	852990
Customs product code (TARIC)	8529909700
Approval and Compliance	RoHS & REACH
Package Contents	Monitor Wall Mounted Bracket CPU Mount User Manual Screws kits
Color	Black
EAN	4015867236253
Model Number	650170
Cable management	Yes
Quick Installation VESA Plate	Yes
Compatible Display Size	17"-32"
Installation	Wall Mounted
Height range	510mm
Load Capacity (kg)	8kg
Material	Plastic, Stainless Steel, Aluminum
Mount	Wall mount
Pan (Swivel) range	+90°~-90°
Screen Rotation	+180°~-180°
Screens support quantity	1
Support Curved TV (Monitors)	Yes
Tilt range	+35°~-35°
VESA compatibility	75x75,100x100
Dimensions (W x D x H)	654 x 635 x 1066 mm
Product weight (kg)	9.48

