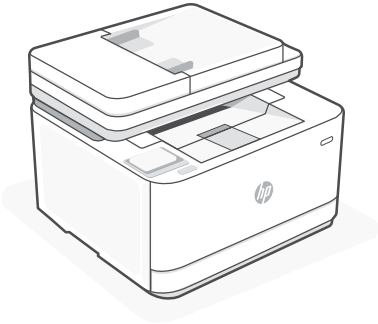




# Setup Guide

---

设置指南



## HP LaserJet Pro

MFP 3103fdw

1

## Setup overview

EN

### Prepare printer

### Choose setup option

#### Option 1: Basic setup

Use for basic printing without Internet

- USB
- Ethernet or Wi-Fi for network capability

OR

#### Option 2: Full-feature setup

Get advanced cloud management features with HP Smart Admin.

## 设置概述

ZHCN

### 准备打印机

### 选择设置选项

#### 选项 1：基本设置

在未连接至 Internet 的情况下使用基本的打印功能

- USB
- 通过以太网或 Wi-Fi 使用网络功能

或

#### 选项 2：完整功能设置

通过 HP Smart Admin 使用高级云管理功能。



使用“微信云打印”  
须选此项

### Get help with setup

Find setup information and videos online.



[hp.com/support/ljmf3101-3108](https://hp.com/support/ljmf3101-3108)




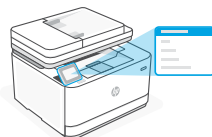
1

**EN** Plug in and power on. On the control panel, choose your language and country/region.

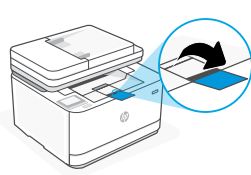
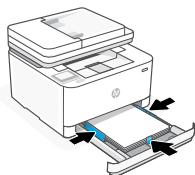
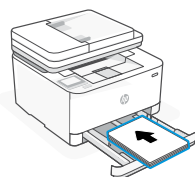
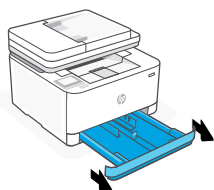


**ZHCN** 插上电源并开机。在控制面板上，选择您的语言和国家/地区。

 注意：须选择“中文/中国”以使用“微信云打印”。



2

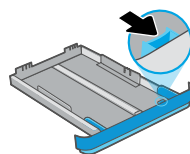


**EN** Load paper and adjust the guides.

**Note:** If loading paper larger than A4, pinch the button in the front of the tray and pull forward. The tray will extend forward by approximately 2.36 inches (60 mm).

**ZHCN** 装入纸张并调整导轨。

**注意：**如果装入的纸张尺寸比 A4 大，请捏住纸盒前面的卡销并向前拉。纸盒将向前延伸约 2.36 英寸（60 毫米）。

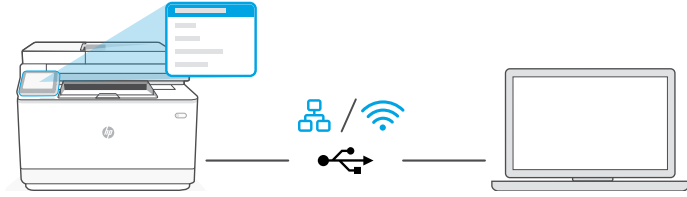



**EN** **OPTION 1: Basic setup**

Choose Basic setup for printing on a local network or USB connection.

**ZHCN** **选项 1：基本设置**

选择基本设置，即可在本地网络上打印或使用 USB 连接进行打印。

**EN** 1. On the control panel, choose your connection method:**Ethernet** 

- i. Connect an Ethernet cable from the printer to the same network as the computer.
- ii. Press “OK” on the control panel to confirm the IP address. Then continue with the steps on the control panel until you reach the home screen.

**Wi-Fi** 

- i. Make sure the computer Wi-Fi is turned on and in range of the printer during setup.
- ii. On the control panel, enter Wi-Fi information when prompted. Choose the same network as the computer.
- iii. Continue with the steps on the control panel until you reach the home screen.

**USB** 

- i. Connect the USB cable to the port on the back of the printer and to the computer.
- ii. Continue with the steps on the control panel until you reach the home screen.

2. Install printer software.
  - i. Go to [hpsmart.com/download](https://hpsmart.com/download) to download the HP software and print drivers.
  - ii. Install the software and complete setup.

## ZHCN

1. 在控制面板上，选择连接方法：

### 以太网

- i. 使用以太网连接线将打印机连接到计算机所在的网络。
- ii. 按控制面板上的“OK”确认 IP 地址。然后继续执行控制面板上的步骤，直到进入主屏幕。

---

### Wi-Fi

- i. 确保计算机 Wi-Fi 在设置期间打开，且打印机位于信号覆盖范围内。
- ii. 出现提示时，在控制面板上输入 Wi-Fi 信息。选择与计算机相同的网络。
- iii. 继续执行控制面板上的步骤，直到进入主屏幕。

---


### USB

- i. 将 USB 连接线的两端分别连接到打印机背面的端口和计算机。
- ii. 继续执行控制面板上的步骤，直到进入主屏幕。

2. 安装打印机软件。

- i. 访问 [hpsmart.com/download](https://hpsmart.com/download) 下载 HP 软件和打印机驱动程序。
- ii. 安装软件并完成设置。

 **Setup Complete for Option 1**

 **选项 1 设置完成**

EN

## OPTION 2: Full-feature setup

Provides cloud-based tools to manage the printer in a multi-user, multi-printer environment.

⚠ Do not use USB cable. The printer must be on a network with access to the Internet.

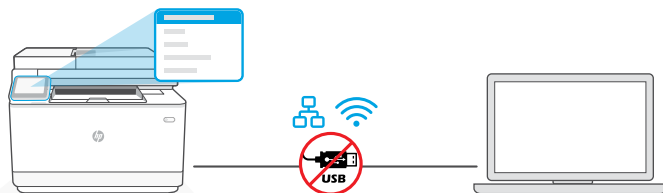
ZHCN

## 选项 2：完整功能设置

### 使用“微信云打印”须选此项

提供基于云的工具，可用于管理多用户、多打印机环境中的打印机。

⚠ 请勿使用 USB 连接线。打印机必须连接至可以访问 Internet 的网络。



## 1 Connect printer to network

## 将打印机连接到网络

EN

1. On the control panel, choose your connection method:

Ethernet



Connect an Ethernet cable from the printer to the same network as the computer. Continue with the steps on the control panel until you reach the home screen.

Wi-Fi



Make sure the computer Wi-Fi is turned on and in range of the printer during setup. Enter Wi-Fi information when prompted, then continue until you reach the home screen.

2. Go to [hpsmart.com/setup](https://hpsmart.com/setup) on a computer to install HP Easy Start software.
3. Choose the option for full-feature setup and to generate a pairing code. The pairing code displays on the control panel.

## 1. 在控制面板上选择连接方法：

以太网



使用以太网连接线将打印机连接到计算机所在的网络。继续执行控制面板上的步骤，直到进入主屏幕。

---

Wi-Fi

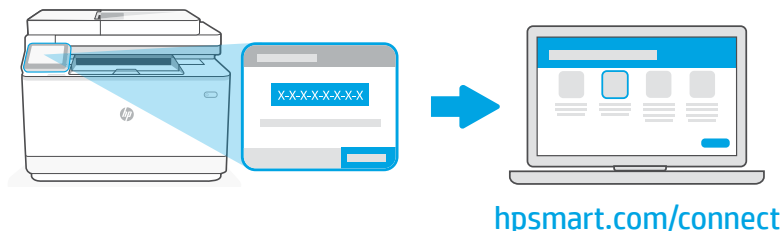


确保计算机 Wi-Fi 在设置期间打开，且打印机位于信号覆盖范围内。出现提示时输入 Wi-Fi 信息，然后继续，直到进入主屏幕。

2. 在计算机上访问 [hpsmart.com/setup](https://hpsmart.com/setup) 以安装 HP Easy Start 软件。
3. 选择完整功能设置选项，并生成配对代码。随后控制面板上将显示配对代码。

## 2 Pair printer to HP Smart Admin

## 将打印机与 HP Smart Admin 配对



EN

1. Record the pairing code that displays on the control panel. The pairing code will expire after a limited time. If code expires, generate a new code in HP Easy Start.
2. Continue setup by going to **[hpsmart.com/connect](https://hpsmart.com/connect)** in a web browser. After creating or signing in to an HP account, you will:
  - Choose to set up the printer for a company/organization or for personal use.
  - Enter the pairing code to link the printer to your HP account.
  - Sign up for Instant Ink for hassle-free, toner delivery service (optional).
  - Install print drivers and print a test page.

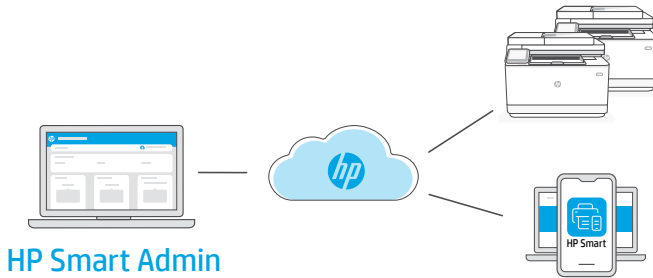
ZHCN

1. 记录控制面板上显示的配对代码。配对代码将在有限时间后过期。如果代码过期，请在 HP Easy Start 中生成新的代码。
2. 在 Web 浏览器中访问 **[hpsmart.com/connect](https://hpsmart.com/connect)** 以继续进行设置。创建或登录 HP 帐户后，您将能：
  - 选择打印机设置方式：是供公司/组织使用，还是供个人使用。
  - 输入配对代码，将打印机关联到您的 HP 帐户。
  - 注册 Instant Ink 即可享受便捷的碳粉配送服务（可选）。
  - 安装打印驱动程序并打印测试页。



### 3 Manage printer with HP Smart Admin

### 利用 HP Smart Admin 管理打印机



**EN** After completing initial setup, manage the printer from a cloud-connected dashboard.



The dashboard URL differs based on how the printer was configured during setup:

**Personal use: [hpsmart.com](https://hpsmart.com)**

- Monitor printer status and supplies
- Share printer with friends and family
- Enable mobile printing (requires HP Smart)
- View warranty status

**Company/organization use: [hpsmart.com/admin](https://hpsmart.com/admin)**

- Manage the printer, toner, users, and more
- Enable mobile printing (requires HP Smart)
- Keep your printing private with Private Pickup

**ZHCN** 完成初始设置后，可从云连接仪表板管理打印机。



根据打印机在设置期间的配置方式，仪表板 URL 会有所不同：

**个人使用: [hpsmart.com](https://hpsmart.com)**


- 监控打印机状态和耗材
- 与朋友和家人共享打印机
- 启用移动打印（需要 HP Smart）
- 查看保修状态

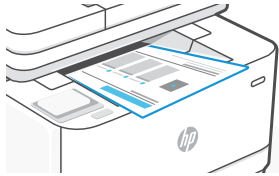
**公司/组织使用: [hpsmart.com/admin](https://hpsmart.com/admin)**

- 管理打印机、碳粉、用户等
- 启用移动打印（需要 HP Smart）
- 利用私人取件功能确保打印的私密性

## 设置微信打印（可选）

**ZHCN**

 请确保选择“设置选项2：完整功能设置”，以使用微信云打印。



**ZHCN**

当完成完整功能设定的所有步骤，打印机将自动打印出一张带有二维码的信息页。

**ZHCN**

如果您没有获得信息页，请访问此网址或扫描此二维码并根据教程重新打印信息页。



**ZHCN**

使用微信扫描信息页上的二维码以启用“惠普云打印”微信小程序，并根据页面提示完成打印机的绑定。





---

© Copyright 2023 HP Development Company, L.P.

Printed in xxxxx  
Printed in xxxxx

**EN**

**ZHCN**



**3G636-90009**