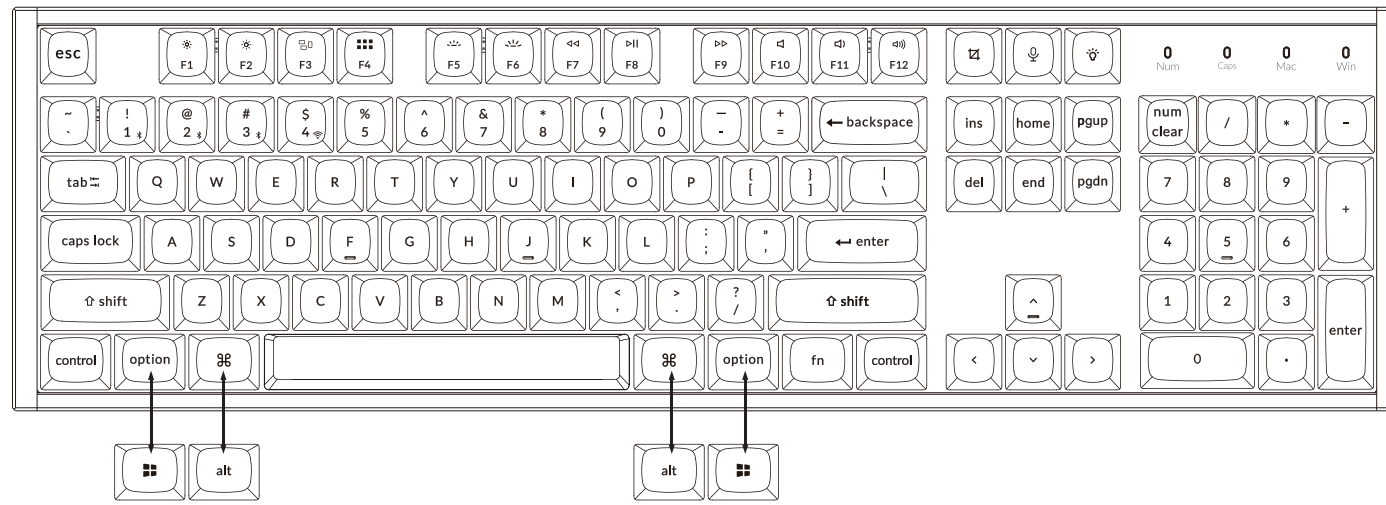
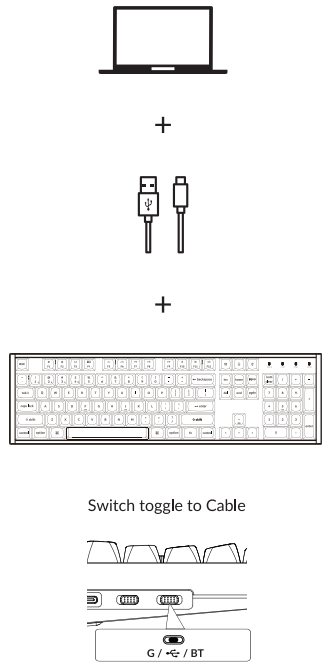


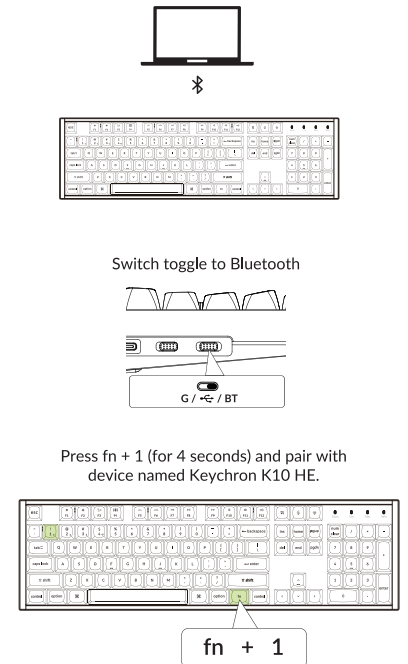
If you are a Windows user, please find the appropriate keycaps in the box, then follow the instructions below to find and replace the following keycaps.

Quick Start Guide

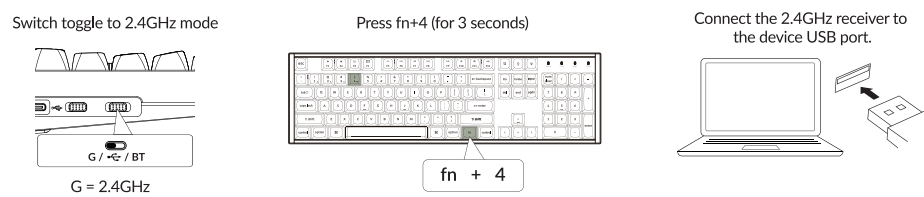
1 Connect Cable



2 Connect Bluetooth

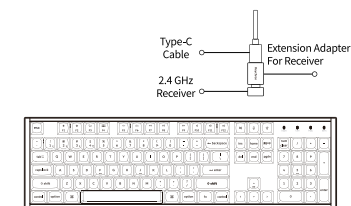


3 Connect 2.4GHz Receiver



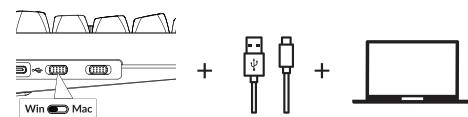
3.5 Use Extension Adapter

Note: For the best wireless experience, we recommend using the extension adapter for receiver and putting the 2.4 GHz receiver somewhere on your desk close to your keyboard for a low rate of latency and fewer signal interferences.



4 Switch To The Right System

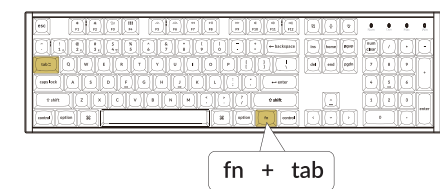
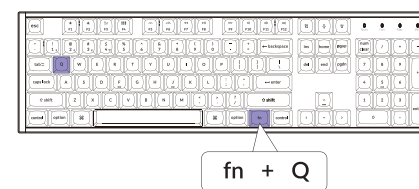
Please make sure the system toggle on the top left corner has been switched to the same system as your computer's operating system.



5 The Backlight

Press fn + Q to change the lighting effect

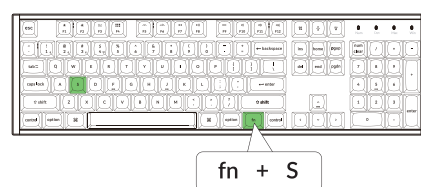
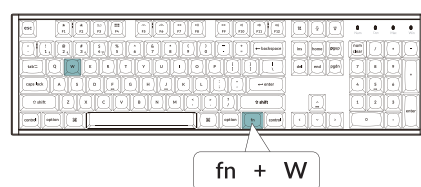
Press fn + tab to turn the backlight on/off



6 Adjust The Backlight Brightness

Press fn + W to increase the backlight brightness

Press fn + S to decrease the backlight brightness



7 The Keychron Launcher App

Please visit launcher.keychron.com to access the Keychron online Launcher app. This app enables users to remap keys, adjust key actuation points, assign multiple commands to a single key, enter game controller mode, and more. If it cannot recognize your keyboard, please reach our support to get instruction.



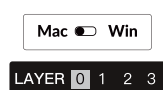
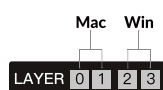
*The online Launcher app can only run on the latest version of Chrome, Edge, and Opera browsers yet.

8 The Layers

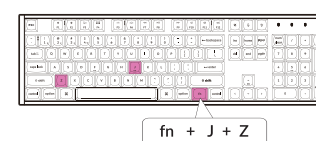
There are four layers of key settings on the keyboard. The layer 0 and layer 1 are for the Mac system. The layer 2 and layer 3 are for the Windows system.

If your system toggle is switched to Mac, then the layer 0 will be activated.

If your system toggle is switched to Windows, then the layer 2 will be activated. Remember that if you are using it in Windows mode, please make changes to the layer 2 instead of the top layer (the layer 0). This is a common mistake people are making.



9 Factory Reset & Firmware Update



Troubleshooting? Don't know what's going on with the keyboard?

Factory reset your keyboard

1. Power on your keyboard.
2. Press and hold fn + J + Z (for 4 seconds). The keyboard backlight will flash in red quickly for 3 seconds, indicating that the keyboard has been reset.

Flash your keyboard firmware

1. Visit launcher.keychron.com to open the online Launcher web app.
2. Ensure the keyboard is in Cable or Wired mode and plug in the power cable.
3. Find the 'Firmware Update' tab on the left side of the Launcher and connect your keyboard with it.
4. Follow the instructions on the Launcher and complete the firmware update. *Step-by-step guide, search the keyword "firmware" on keychron.com.