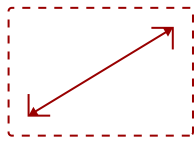


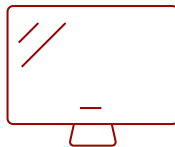
VP2456

Key Features

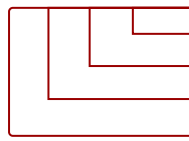
- Pantone Validated Display
- Reduce Clutter With Single-Cable Solution
- Amazing Color Accuracy
- Excellent Screen Uniformity
- vdisplaymanager With Color Sensitivity Mode
- Professional Color Processing



24
DISPLAY



IPS
PANEL



1920 x 1080
RESOLUTION



Product Description

Engineered to deliver unmatched color accuracy crucial for professional applications, the ViewSonic® VP2456 24" (23.8" viewable) Full HD monitor displays your work with the vivid and lifelike color it deserves. With a SuperClear® IPS panel and a sleek 3-sided frameless design, the VP2456 provides a near-seamless viewing experience ideal for multi-monitor setups. The VP2456 is equipped with USB-C for single cable connectivity to deliver video, audio, and 60W of power delivery. To ensure precise, uniform color, each of our monitors is factory calibrated to deliver an amazing Delta E <2, so you can be confident what you see on screen is what your clients and customers will see as well.

Specifications

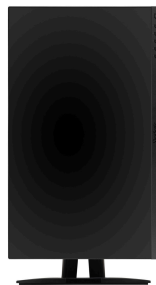
[More Information](#)

Display Size (in.)

24

| | |
|------------------------------------|--|
| Viewable Area (in.) | 23.8 |
| Panel Type | IPS |
| Resolution | 1920 x 1080 |
| Resolution Type | Full HD (1920x1080) |
| Static Contrast Ratio | 1,000:1 |
| Dynamic Contrast Ratio | 20,000,000:1 |
| Light Source | LED |
| Brightness | 250 cd/m2 |
| Colors | 16.7M |
| Color Space Support | 6 bit |
| Aspect Ratio | 16:9 |
| Response Time (Typical GTG) | 5ms |
| Viewing Angles | 178° horizontal, 178° vertical |
| Backlight Life (Hours) | 30,000 |
| Panel Surface | Anti-Glare type, Hard-coating (3H), Haze 25% |
| PC Resolution (max) | 1920 x 1080 |
| Mac® Resolution (max) | 1920 x 1080 |
| USB Type A | 3 |
| USB Type B | 1 |
| USB Type C | 1 |
| HDMI 1.4 In | 1 |
| DisplayPort | 1 |
| Internal Speakers | 2W (x2) |
| Eco Mode (Conserve) | 34W |
| Eco Mode (optimized) | 37W |
| Consumption (typical) | 41W |
| Consumption (max) | 52W |
| Voltage | AC 100-240V (universal), 50-60Hz |
| Stand-by | 0.3 |
| Power Supply | Internal |
| Cable Organization | No |
| Kensington Lock Slot | 1 |
| Temperature | 32-104° F (0 - 40° C) |
| Humidity (non-condensing) | 20-90% |
| VESA Compatible | 100 x 100 mm |
| Frequency Horizontal | 30 ~ 83 KHz |

| | |
|-------------------------------------|--|
| Frequency Vertical | 48 ~ 75 Hz |
| Height Adjust | 130 mm / 5.1 in |
| Swivel | 120° |
| Pivot (Right/Left) | 90° / 90° |
| Tilt (Forward/Back) | 5° / 21° |
| Net (lbs) | 14.4 |
| Net Without Stand (lbs) | 8.9 |
| Gross (lbs) | 18.5 |
| Net (kg) | 6.5 |
| Net Without Stand (kg) | 4.0 |
| Gross (kg) | 8.4 |
| Packaging (in.) | 24.4 x 15.4 x 9.0 |
| Physical (in.) | 21.2 x 15.29~20.41 x 8.5 |
| Physical Without Stand (in.) | 21.2 x 12.6 x 2.0 |
| Packaging (mm) | 620.0 x 392.0 x 228.0 |
| Physical (mm) | 539.0 x 388.46~518.46 x 215.0 |
| Physical Without Stand (mm) | 539.0 x 320.0 x 52.0 |
| Regulations | cTUVus, FCC-B, ICES003, Energy Star 8.0, EPEAT Silver, CEC, NOM, Mexico Energy |
| PACKAGE CONTENTS | LCD Display Power Cable USB-C Cable HDMI cable USB-A/B Cable Quick Start Guide |
| Recycle/Disposal | Please dispose of in accordance with local, state or federal laws. |
| Warranty | Three-year limited warranty on parts, labor and backlight |



Contact Sales

ViewSonic.com

888.881.8781 📞

email:

salesinfo@viewsonic.com