

X301 Setup Poster

P/N 43Y6818

06/13/2008

Size : 11x14 inches

Color : 2 color job = ■ Process Black (This plate must be printed in PMS Process Black C)

■ Process Magenta (This plate must be printed in PMS 032cvc)

Font : Helvetica Neue Family

Material : 105 gsm gloss art paper

Blue line shows die-cut. DO NOT PRINT.

Please change the barcode No.

Please change the country name if the poster is printed in other than China.

ThinkPad®



Unpack

- ThinkPad® notebook
- Battery pack
- Power cord
- AC adapter
- 2 TrackPoint® caps
- Manuals
 - Setup Instructions (this sheet)
 - Safety and Warranty Guide
 - Service and Troubleshooting Guide
 - Other supplements or flyers

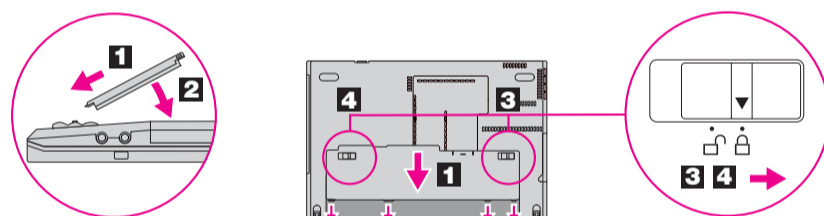
See reverse for notes about unlisted, missing, or damaged items and a recovery disc.

Initial Setup Instructions

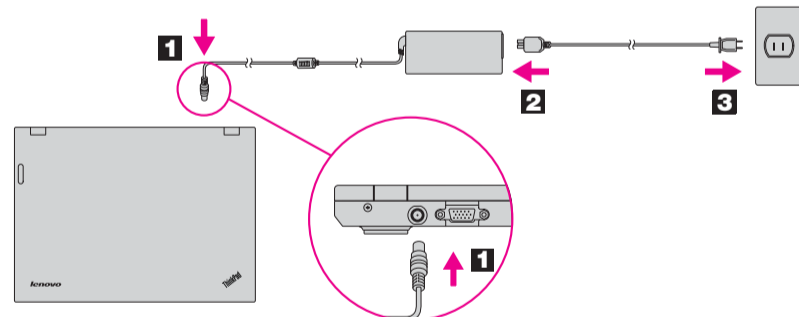


Read the safety notices and important tips in the included manuals before using your computer.

- 1 Install battery pack:**
Your battery is ready to use.



- 2 Connect to power:**



- 3 Turn on the power:**



- 4 Point and click with UltraNav® Multi-pointing Navigation System:**
Press the TrackPoint cap or move across the touch pad in the direction you want to move the pointer. The left and right buttons below the space bar and touch pad function like mouse buttons.

- 5 Configure the Operating System following on-screen instructions:**
This process takes several minutes.

- 6 For more detailed information, press the ThinkVantage® button:**



ThinkVantage® Design

- 1 UltraConnect™ wireless antennas (main and auxiliary)**

- 2 Integrated camera***
*Select models only.

- 3 ThinkLight® keyboard light**

- 4 Built-in microphone**

- 5 Volume and mute buttons**



- 6 Power button**



- 7 ThinkVantage button**



- 8 CapsLock indicator**



- 9 TrackPoint center button**

- 10 Fingerprint reader**

- 11 Web browser back and forward**

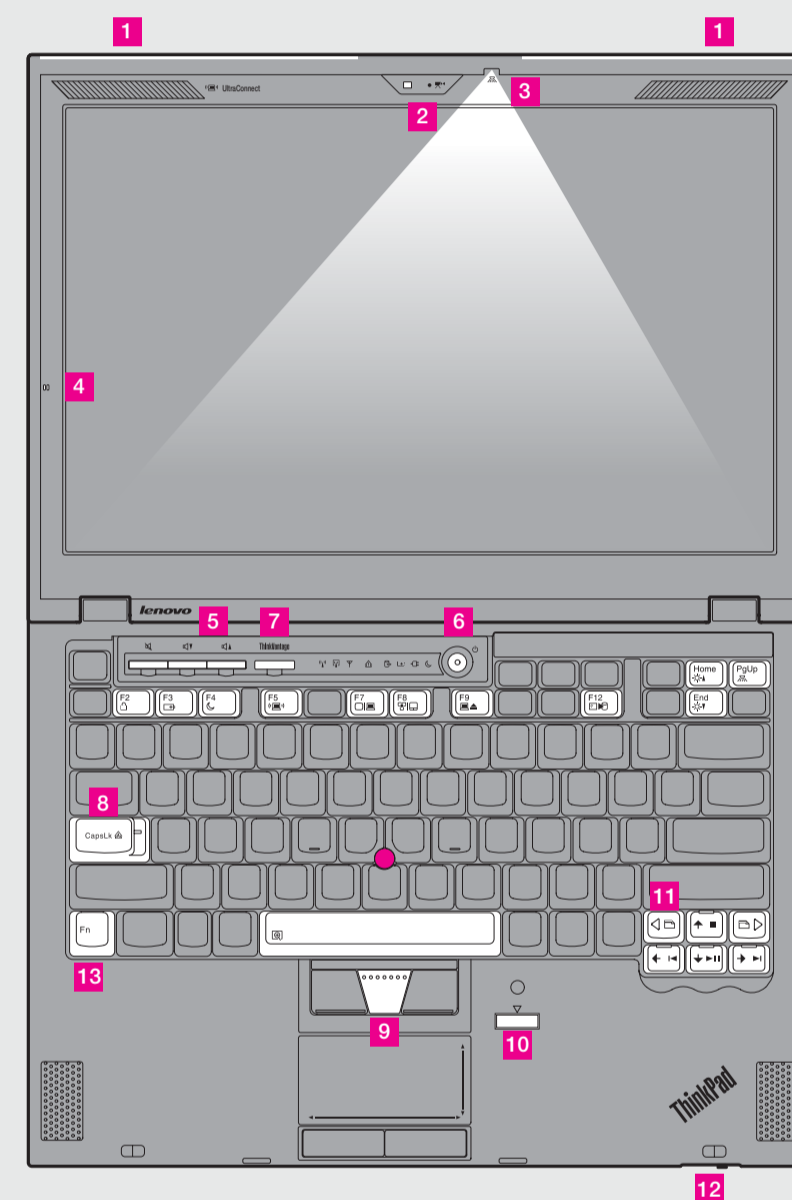


- 12 One-handed latch**

- 13 Fn key**

Use in combination with other keys to access special ThinkPad features.

- | | | | |
|--|------------------------------|--|---------------------------|
| | Lock your computer | | Enter hibernation |
| | Manage battery & power | | ThinkLight on/off |
| | Enter sleep (standby) | | Multimedia controls |
| | Manage wireless connections | | Change display brightness |
| | Change display settings | | Change display brightness |
| | Change input device settings | | Magnify screen contents |
| | Manage external devices | | |



X301 Setup Poster

P/N 43Y6818

06/13/2008

Size : 11x14 inches

Color : 2 color job = ■ Process Black (This plate must be printed in PMS Process Black C)

■ Process Magenta (This plate must be printed in PMS 032cvc)

Font : Helvetica Neue Family

Material : 105 gsm gloss art paper

Blue line shows die-cut. DO NOT PRINT.

Please change the barcode No.

Please change the country name if the poster is printed in other than China.

Thank you for choosing a ThinkPad notebook.

The ThinkPad notebook renews the standard for mobility and capabilities.

Cutting-edge and stylish design

Your computer achieves industry-leading thinness, lightness, and durability in the 13.3-inch widescreen space by applying the next-generation ThinkPad "roll cage" technology, which uses a combination of carbon fiber and glass fiber.

Solid state drive*

The solid state drive* (SSD) increases the performance, battery life, and reliability of your computer. This cutting-edge technology enables your computer to be thinner, lighter, and faster.

To learn more about SSD, see About your computer in Access Help.

Energy-saving design

The energy efficiency of the design, along with the use of a low-voltage CPU, an SSD, and a backlit LED display, enables longer continuous operation on battery power.

Green design

Your computer is rated EPEAT Gold for low energy use and minimal impact on the environment. It also meets the European Union's Reduction of Hazardous Substances standards and the Climate Savers efficiency standards, and it is ENERGY STAR 4.0 qualified.

Diverse connectivity options

Your computer provides you with advanced connectivity options, such as Gigabit Ethernet, Wireless LAN, Wireless USB*, Bluetooth*, Wireless WAN*, and WiMAX*.

To learn more about network connections, see Getting connected in Access Help.

*Select models only.

ThinkVantageTechnologies

ThinkVantage Technologies are advanced technologies that enable you to improve productivity, protect your data, and reduce overall lifecycle costs.

To learn more about ThinkVantage Technologies, open the ThinkVantage Productivity Center by pressing the ThinkVantage button.

ThinkVantage



Using Access Help (online manual) and the included manuals

To find detailed information about your computer, open Access Help, or see the Safety and Warranty Guide or the Service and Troubleshooting Guide.



Access Help

Access Help is a comprehensive online manual that provides answers to most of your questions about your computer, helps you to configure preinstalled features and tools, or solve problems.

To open Access Help, do either of the following:

- Press the ThinkVantage button. Under Quick Links in the ThinkVantage Productivity Center, click "Access on-system help."
- Click Start, move the pointer to All Programs; then to ThinkVantage. Click Access Help.



Safety and Warranty Guide

- Important safety information
- Operating environment and other important notices
- Warranty information

Service and Troubleshooting Guide

- Introduction to other sources of information
- Important tips for taking care of your computer
- Diagnostics and troubleshooting
- Recovery options
- Help and service
- Warranty information for your computer

* Additional unpacking notes:

- 1) Some models may contain items that are not listed.
- 2) If any item is missing or damaged, please contact your place of purchase.
- 3) Everything for recovering factory-installed files and applications is on your hard disk eliminating the need for a recovery disc. For more information, see "Recovery options" in the Service and Troubleshooting Guide.

© Copyright Lenovo 2008.
All rights reserved.

The following terms are trademarks of Lenovo in the United States, other countries, or both:

Lenovo
ThinkPad
TrackPoint
ThinkVantage

ThinkLight
UltraConnect
UltraNav

Other company, product, or service names may be trademarks or service marks of others.

Printed in China

For Barcode Position Only