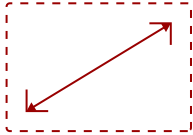
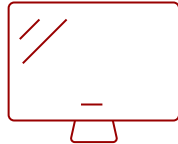


55" 4K COMMERCIAL DISPLAY WITH 350 CD/M<sup>2</sup> BRIGHTNESS, 16/7 OPERATION, HDMI, USB-C, CONTENT SHARING, REMOTE MANAGEMENT | CDE5514

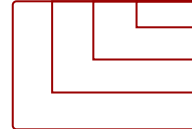
## Key Features



55  
DISPLAY



ADS  
PANEL



RESOLUTION



## Product Description

The ViewSonic CDE14 series is a high-performance 4K display purpose-built for Corporate Offices, Higher Education, and the Public Sector. Featuring a 25% high-haze anti-glare coating and a 350-nit "sweet spot" for eye comfort, it ensures reflection-free clarity in Retail Boutiques and Professional Services. This series eliminates technical friction with Single-Cable USB-C connectivity, AirSync™ wireless casting, and a secure Android 14 platform. Unlike standard 16/7 displays that require expensive licenses or proprietary hardware, the CDE14 offers a Certified Pro-AV Ecosystem (Crestron, Extron, Q-SYS) and includes ViewSonic Manager™ Basic for free, centralized fleet control. With Intelligent Signal Failover and a fast "Warm Boot" startup, your communications remain active and efficient. Eco-certified and future-proof, the CDE5514 delivers a premium, secure experience with a significantly lower total cost of ownership than leading competitors.

## Specifications

### More Information

<b>UPC</b>	766907036305
<b>OS</b>	Android 14 AOSP
<b>GPU</b>	ARM Mali-G57 MC1
<b>CPU</b>	MT9681 (ARM Cortex-A73 x4)
<b>Memory</b>	4GB DDR4
<b>Storage</b>	32GB
<b>Photo</b>	BMP, GIF, JPEG, PNG
<b>Video</b>	AVI, FLV, F4V, MKV, MOV, MP4, MPG, WEBM
<b>Music</b>	AAC, APE, FLAC, PCM, MP3, OGG, WAV
<b>HDMI 2.1</b>	480i, 480p, 720p, 1080i, 1080p, 4K@60Hz
<b>HDMI Out</b>	4K@60Hz
<b>USB-C</b>	480p, 576p, 720p, 1080p, 4K@60Hz

<b>Internal Speakers</b>	10W (x2)
<b>Speaker Position</b>	Bottom
<b>HDMI 2.1 In</b>	3
<b>3.5mm Audio Out</b>	1
<b>SPDIF</b>	1
<b>USB 2.0</b>	2
<b>USB Type C</b>	15W x 1
<b>RS232</b>	1
<b>Ethernet LAN (RJ45)</b>	1
<b>Voltage</b>	100-240 VAC +/- 10% Wide Range, 50-60Hz +/-3 Hz
<b>Consumption (max)</b>	149.3W
<b>Consumption (typical)</b>	60.3W
<b>Stand-by</b>	<0.5W
<b>Temperature</b>	32-104° F (0 - 40° C)
<b>Humidity (non-condensing)</b>	20-80%
<b>Net (lbs)</b>	28.55
<b>Gross (lbs)</b>	39.64
<b>Net (kg)</b>	13.0
<b>Gross (kg)</b>	18.0
<b>Packaging (in.)</b>	52.44 x 33.03 x 6.14
<b>Physical (in.)</b>	48.54 x 27.7 x 2.81
<b>Packaging (mm)</b>	1332 x 839 x 156
<b>Physical (mm)</b>	1233 x 703.5 x 71.4
<b>VESA Compatible</b>	400 x 400 mm
<b>Screw Size</b>	M6
<b>Screw Length (mm)</b>	12
<b>AV Control</b>	AMX Certified, Extron Certified, Crestron Connected
<b>Warranty</b>	Three-year limited warranty on parts, labor and backlight
<b>Recycle/Disposal</b>	Please dispose of in accordance with local, state or federal laws.
<b>Package Contents</b>	CDE5514 Commercial Display, Remote control with batteries, Quick Start Guide, Power cable (3m), HDMI Cable (3m), Wall Mount Screws (x4), AAA battery (x2) and RS232 adapter
<b>Regulations</b>	cTUus, FCC, Energy Star 8.0, RoHS
<b>Wifi</b>	VB-WIFI-005 adapter, 802.11AX + Bluetooth 5.2
<b>Screen Size</b>	55
<b>Viewable Area (in.)</b>	55
<b>Orientation</b>	Landscape

<b>Colors</b>	1.07B
<b>Color Space Support</b>	8 bit + FRC
<b>Light Source</b>	DLED
<b>Display Resolution</b>	3840 x 2160
<b>Refresh Rate</b>	60Hz
<b>Panel Type</b>	ADS
<b>Aspect Ratio</b>	16:9
<b>Static Contrast Ratio</b>	1,200:1
<b>Dynamic Contrast Ratio</b>	2,000:1
<b>Backlight Life (Hours)</b>	30,000
<b>Brightness</b>	350 cd/m2
<b>Response Time (Typical GTG)</b>	8ms
<b>Bezel Width (in.)</b>	0.39
<b>Bezel Width (mm)</b>	9.9
<b>Viewing Angles</b>	178° horizontal, 178° vertical
<b>Panel Surface</b>	Anti-Glare type, Hard-coating (3H), Haze 25%
<b>Operation Rating</b>	16/7

UPC: 766907036305



## Contact Sales

[ViewSonic.com](http://ViewSonic.com)

888.881.8781

email: [salesinfo@viewsonic.com](mailto:salesinfo@viewsonic.com)