

RK2236BKF

22U 36" Server Rack Cabinet
with Glass Door

Installation Guide

StarTech.com

Making hard-to-find easy!®



Packaging Contents

- 4 x Adjustable Feet
- 2 x Allen Wrench (small, large)
- 1 x Assembly screw kit (M4, M5, M6, M8)
- 4 x Casters
- 8 x Corner Caps
- 4 x Cross Brace
- 1 x Left and Right Panel and frame
- 20 x M6 Cabinet Screws and Nuts
- 2 x Sets of keys
- 1 x Top Panel
- 3 x Bottom Panel

Required Tools

- Phillips (crosshead) screwdriver
- Adjustable wrench

WARNING! Please ensure that the rack is fully assembled with all included parts and fasteners before attempting to mount any rack equipment. Failure to install and fully tighten any hardware could severely compromise the structural integrity of the rack. If any hardware is missing, please contact StarTech.com customer service immediately.

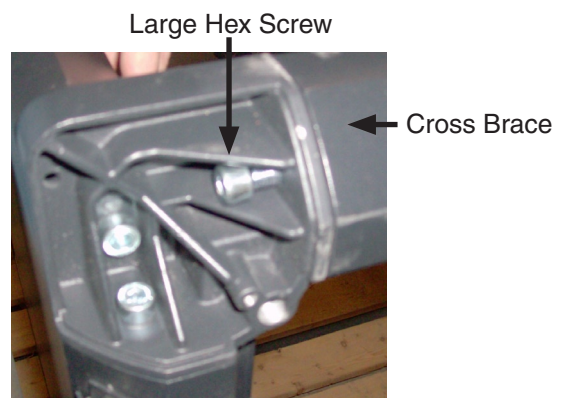
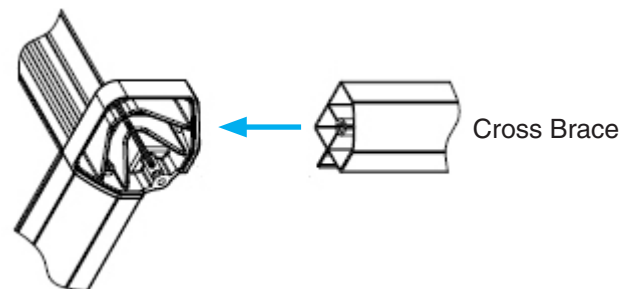
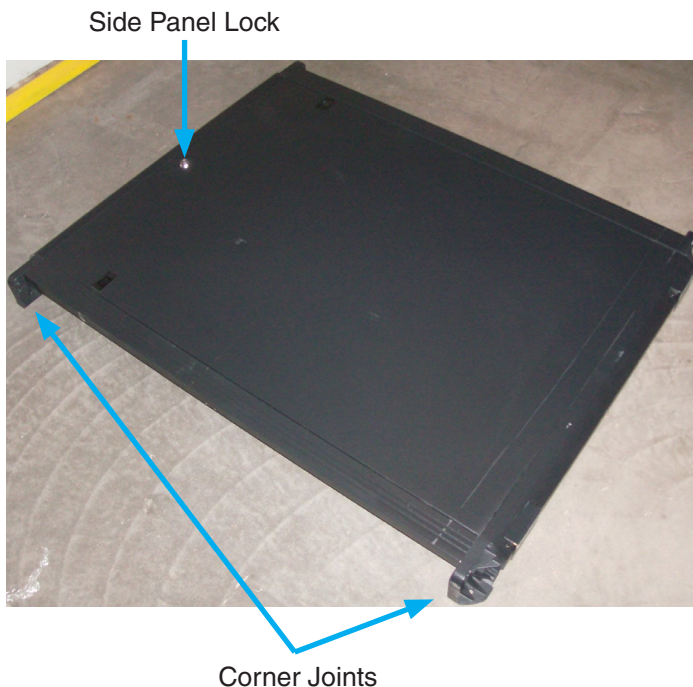
Installation

Frame Assembly

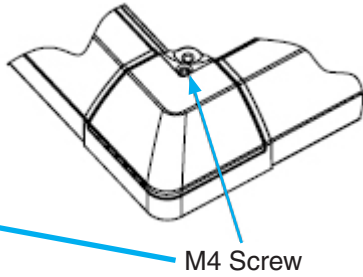
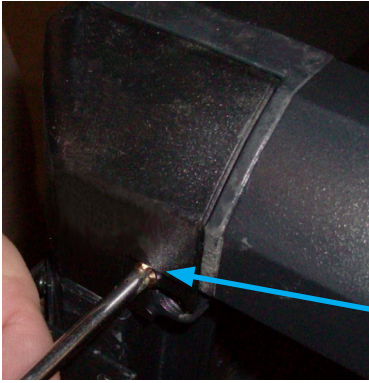
1. Connect the two side frames (with side doors) together using the 4 cross braces at each corner. Fasten using a large hex screw at each end of the brace with the large Allen Wrench. Attach the cross braces to one side first, then attach the second side frame to the braces.

NOTE: Make sure that the two side frames are right side up. Check that the lock and latches on the side doors are on the same end.

WARNING: Before proceeding, ensure that **ALL** hex screws are tightly wrench torqued to prevent accidental loosening during use.



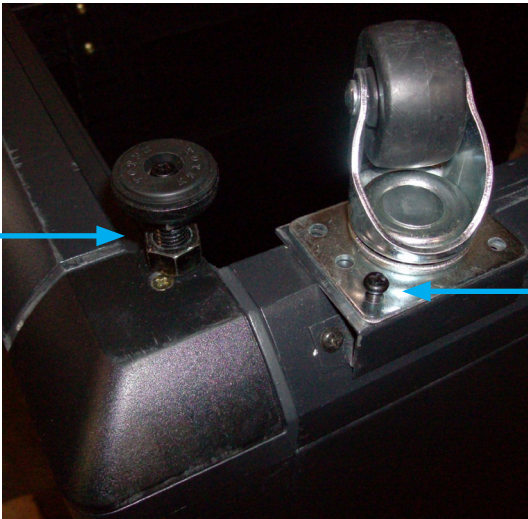
2. Place the Corner Caps over the corner joints and fasten them with M4 screws and a Phillips screwdriver.



M4 Screw

3. On the bottom of the rack, install the four adjustable corner feet and the four casters. The adjustable feet screw into the large openings in each corner with their height determined by the large hex nut. Screw in the feet to the desired height, then use an adjustable wrench to lock the hex nut in place. The casters are fastened using the M5 screws and Phillips screwdriver.

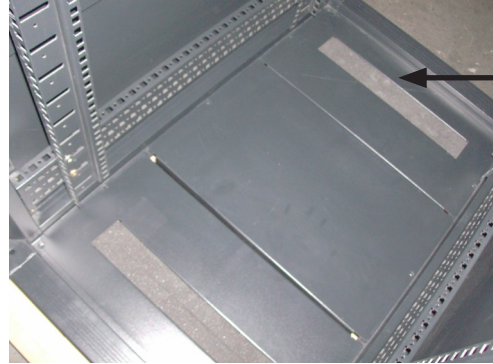
NOTE: You may wish to position the feet so the rack does not move, until assembly is complete.



Corner Feet

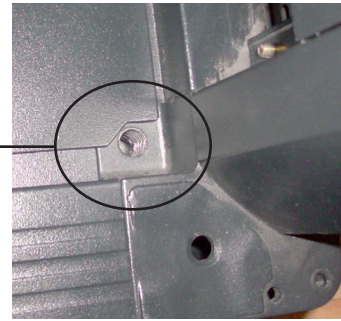
M5 Screw

5. Position the 3 floor plates on the bottom of the rack, making sure the two pieces with the cable management slots are at the end. Fasten the floor plates with M5 screws and Phillips screwdriver.

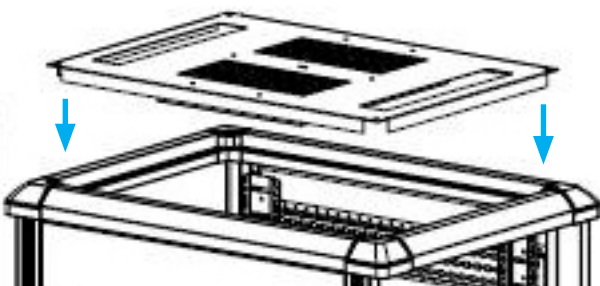


Cable Management Slot

Note the notches in the end plate corners



4. Position the rack right-side up (side panel locks at top) and drop the top panel onto the top of the rack. Fasten to the frame using M6 hex screws and the smaller Allen Wrench.

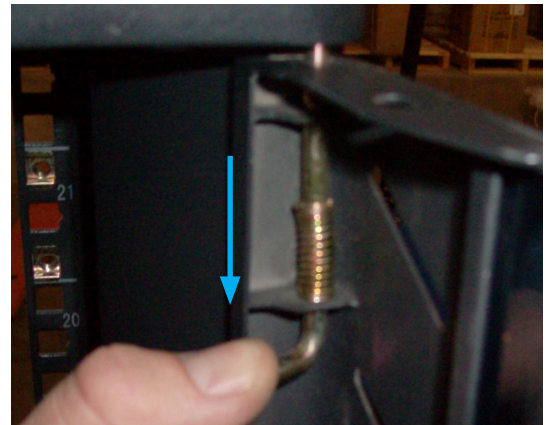


M6 Hex Screw

6. To install the front and rear doors, first install the door bearings into the bottom of the door frames. Install the door onto the bearing and then pull down the spring loaded door bearing to install the top of the door.



Door Bearing





WARNING: Before attempting to use the cabinet, ensure that all screws (inside and outside the cabinet) are tightly torqued to prevent accidental loosening during use.



Specifications

Description	22U 36" Server Rack Cabinet with Glass Door
Material	SPCC (2.0mm)
Color	Black
Maximum Weight Capacity	800kg / 1760lbs
Internal Height	22U
Maximum Mounting Depth	36 inches
Mounting Width	19 inches
Mounting Hole Type	Square
External Dimensions (LxWxD)	600.0mm x 1304.0mm x 1000.0mm
Net Weight	85.5kg
Standards	EIA RS-310D, IEC297-2, DIN41191 (Part 1)
Certifications	RoHS, WEEE

FCC Compliance Statement

This equipment has been tested and found to comply with the limits for a Class B digital device, pursuant to part 15 of the FCC Rules. These limits are designed to provide reasonable protection against harmful interference in a residential installation. This equipment generates, uses and can radiate radio frequency energy and, if not installed and used in accordance with the instructions, may cause harmful interference to radio communications. However, there is no guarantee that interference will not occur in a particular installation. If this equipment does cause harmful interference to radio or television reception, which can be determined by turning the equipment off and on, the user is encouraged to try to correct the interference by one or more of the following measures:

- Reorient or relocate the receiving antenna.
- Increase the separation between the equipment and receiver.
- Connect the equipment into an outlet on a circuit different from that to which the receiver is connected.
- Consult the dealer or an experienced radio/TV technician for help.

Use of Trademarks, Registered Trademarks, and other Protected Names and Symbols

This manual may make reference to trademarks, registered trademarks, and other protected names and/or symbols of third-party companies not related in any way to StarTech.com. Where they occur these references are for illustrative purposes only and do not represent an endorsement of a product or service by StarTech.com, or an endorsement of the product(s) to which this manual applies by the third-party company in question. Regardless of any direct acknowledgement elsewhere in the body of this document, StarTech.com hereby acknowledges that all trademarks, registered trademarks, service marks, and other protected names and/or symbols contained in this manual and related documents are the property of their respective holders.

Technical Support

StarTech.com's lifetime technical support is an integral part of our commitment to provide industry-leading solutions. If you ever need help with your product, visit www.startech.com/support and access our comprehensive selection of online tools, documentation, and downloads.

Warranty Information

This product is backed by a lifetime warranty.

In addition, StarTech.com warrants its products against defects in materials and workmanship for the periods noted, following the initial date of purchase. During this period, the products may be returned for repair, or replacement with equivalent products at our discretion. The warranty covers parts and labor costs only. StarTech.com does not warrant its products from defects or damages arising from misuse, abuse, alteration, or normal wear and tear.

Limitation of Liability

In no event shall the liability of StarTech.com Ltd. and StarTech.com USA LLP (or their officers, directors, employees or agents) for any damages (whether direct or indirect, special, punitive, incidental, consequential, or otherwise), loss of profits, loss of business, or any pecuniary loss, arising out of or related to the use of the product exceed the actual price paid for the product. Some states do not allow the exclusion or limitation of incidental or consequential damages. If such laws apply, the limitations or exclusions contained in this statement may not apply to you.