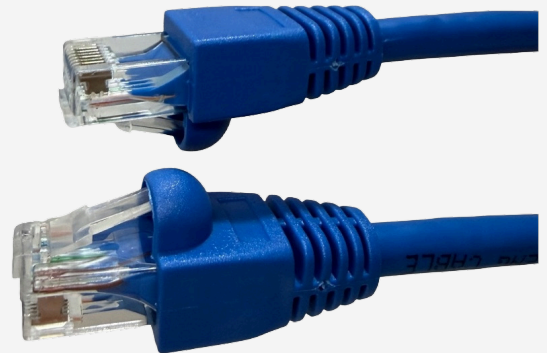


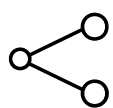
# 4XEM™ Product Data Sheet


## 50FT CAT6A RJ45 UTP Pure Copper Patch Cable (Blue)



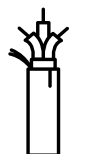
*Engineered for reliable, high-speed data transmission with durable, long-lasting performance for demanding network environments.*

### Key Features

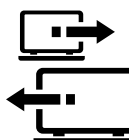
 RJ-45 Connectors  
EIA/TIA 568B Pinout

 RoHS Compliant

 Pure Copper  
construction

 PVC Jacket rated  
FT1, UL

 30 μin Gold-Plated  
Contacts

 Up to 10Gbps Data  
transfer speed

### Technical Highlights

SKU Name	4XC6APATCH50BL
Warranty	Lifetime
Cable Properties	Pure Copper, Stranded conductors with PVC jacket
Compliances	FT1/UL Fire Rating, RoHS

### Application(s)

Built for network technicians, system integrators, and office environments, this cable delivers dependable, high-speed performance for routers, switches, servers, and workstation setups.

Visit [4XEM.com](http://4XEM.com)

Contact Brandon Hegarty 4XEM Sales Manager  
1-866-999-4936 ext.113 [bhegarty@4xem.com](mailto:bhegarty@4xem.com)

# 4XEM™ Product Data Sheet

## Technical Specifications

Warranty Information	Warranty	Lifetime
Performance	Cable Rating Certifications Standards Data rate Support Bandwidth ratings PoE Support testing	CAT6A - 500 MHz RoHS Compliant TIA/EIA-568B.2 500 MHz 10 Gbps Pass
Connector(s)	Connector A Connector B Connector Plating Boot Type	RJ-45 Male - TIA/EIA 568B Pinout RJ-45 Male - TIA/EIA 568B Pinout 30 µin Gold-Plated Contacts Blue Overmold Strain relief
Hardware	Cable Jacket Material Cable Jacket Fire Rating Cable build Cable Shielding	PVC (Polyvinyl Chloride) FT1, UL UTP 4 Pair No
Physical Characteristics	Color Conductor Type Wire Gauge Bend Radius Durability Operating Temperature Storage Temperature Cable OD Cable Length Weight of Product	Blue Pure Copper, Stranded (Patch cable) 25 AWG 20D Ten years 32 °F to 140 °F (0 °C to 60 °C) -4 °F to 167 °F (-20 °C to 75 °C) 0.23 in [6 mm] 50 ft [15.24 m] 20.86 oz [591.4 g]
Packaging Information	Package Type Package Height Package Width Package Length Shipping (Package) Weight	Poly Bag 9.84 in [250 mm] 11.8 in [300 mm] 1.35 in [34.3 mm] 20.95 oz [594 g]
What's in the Box	Included in Package	50 ft Cat 6A Patch Cable - Blue
Notes	Notes	

\* Product appearance and specifications are subject to change without notice.

\* Weights and measurements are approximate.