

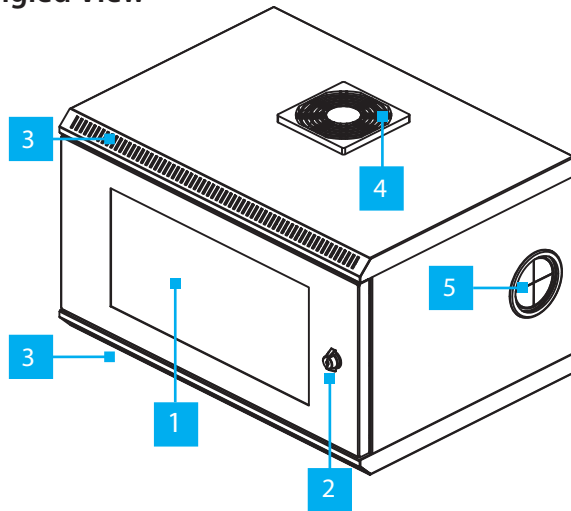
6U 19in Wall Mount Server Rack Cabinet

Product ID

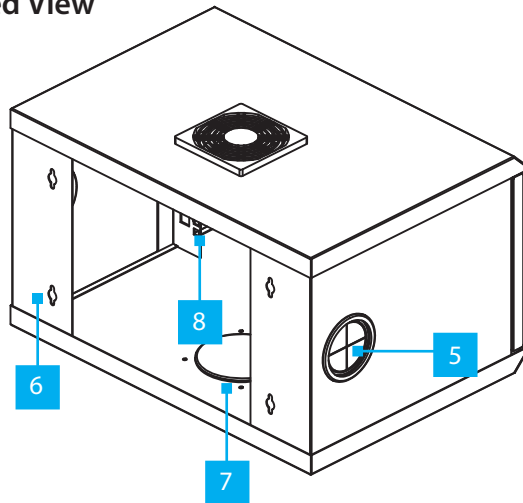
RK619WALL

Product Diagram

Front - Angled View



Rear - Angled View



*Product may vary from image

Component	Function
1 Window Area	• Enables monitoring of the Mounted Equipment at a glance
2 Door Lock	• Locks the Door using the included Keys
3 Top and Bottom Vents	• Vented panel to promote airflow
4 Cooling Fan	• Top-mounted 120mm Fan helps to regulate the temperature of the Mounted Equipment
5 Cable Routing Holes	• Removable pre-installed cover. Enables convenient passage for cables
6 Wall-Mounting Holes	• Used to fasten the Wall-Mounted Rack onto a wall • Horizontal distance between the Wall-Mounting Holes is 16 in (40.6 cm)
7 Secondary Fan Hole	• Removable pre-installed cover. Enables installation of 120mm Fan (not included)
8 Mounting Posts	• For mounting 19in Rack Equipment

Product Information

For the latest manuals, product information, technical specifications, and declarations of conformance, please visit: www.StarTech.com/RK619WALL

Requirements

- Phillips Head Screwdriver
- Mounting Hardware (not included)
- Spirit/Bubble Level
- (Optional) Wrench
- (Optional) Cage Nut Tool

How to Identify the LOT Code Revision Number

The Revision Number (Rev #) appears as the fifth and sixth digits of the LOT code, located on the sticker affixed to the product and its packaging. If the LOT code sticker is missing, the product is Rev 01.

Warnings!

- Read the entire manual and ensure the instructions are fully understood before assembling and/or using this product.
- StarTech.com Ltd. is not responsible for any property damage and/or personal injury resulting from the installation procedures outlined in this technical document.
- Mounting hardware is not included with this product. Make sure to source appropriate mounting hardware that is capable of supporting the weight of a loaded Rack, and is adequate for the wall type the rack is going to be mounted on.
- If you lack the necessary expertise required to attach this product to the wall structure or to assess the suitability of the hardware provided, please contact a professional installer.
- Before adding equipment to this product, ensure this product has been properly mounted.
- Never operate this product if parts are missing or damaged.
- Ensure the weight of the equipment does not exceed the weight capacity of this product. If the weight capacity is exceeded, personal injury or damage to the equipment are possibilities. This product can support the following weight: up to 110.2lbs (50kg).
- Wall structures vary. Ensure the type of wall structure and mounting hardware will properly support the mounted equipment. Failure to do so might result in personal injury and/or equipment damage. The wall structure should be capable of supporting at least four times the weight of the mounted equipment.

Package Contents

- 6U Equipment Rack x 1
- Set of Keys x 1
- M5 Screws x 20
- M5 Cage Nuts x 20

Installation

Mount the 6U Equipment Rack to a Mounting Surface

1. Place the **6U Equipment Rack** against the Mounting Surface, in the location it will be mounted (ensure it is level, using a **Spirit/Bubble Level**).
2. Use the **Wall-Mounting Holes** (x4), located on the **Wall Mount Server Rack** as a template, and mark the surface in all four locations where the mounting hardware will be installed.
3. Use the appropriate **Mounting Hardware** to fasten the **Wall Mount Server Rack** to the Mounting Surface.

Install the Cage Nuts

1. Install the **M5 Cage Nuts** into the **Mounting Holes** on the **Mounting Posts**. If available, use a **Cage Nut Tool** or your preferred installation method to install the **Cage Nuts**.
2. Repeat **Step 1** as many times as needed to install the number of **M5 Cage Nuts** required for the application.
3. Align the **Mounting Holes** on the **Rack Equipment** with the **M5 Cage Nuts** installed on the **Mounting Posts**.

4. Insert the **M5 Screws** (x 4) through the **Mounting Holes** (x 4) on the **Rack Equipment**, and into the **M5 Cage Nuts** (x 4). Tighten each **M5 Screw** (x 4) using a **Phillips Head Screwdriver** to fasten the **Rack Equipment** to the **Mounting Posts**.

Reverse the Door

To accommodate different rack configurations, you can reverse the door to open to the left or right of the rack. The door uses spring-loaded pins located at the top and bottom corners of the door.

1. While holding the **Door**, Pull the **Pin Handle Down** in the **Inside Top Corner** of the **Door**. Pull the **Top Corner** of the **Door** slightly away from the **Door Frame**. (Figure 1)

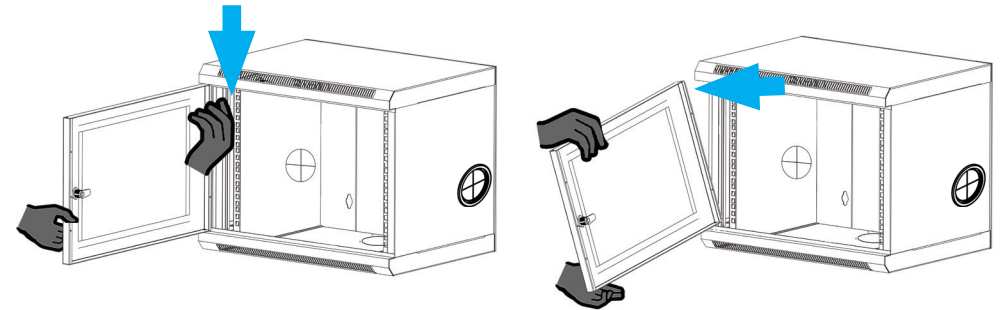


Figure 1

2. In the **Bottom Corner** of the **Inside** of the **Door**, Pull the **Pin Handle Up** and remove the **Door**. Retain the **Washer** from the **Bottom Corner**, for re-installation of the **Door**. The **Washer** may be located on the **Pin** or the **Lower Hinge Hole** on the **Door Frame** (Figure 2).

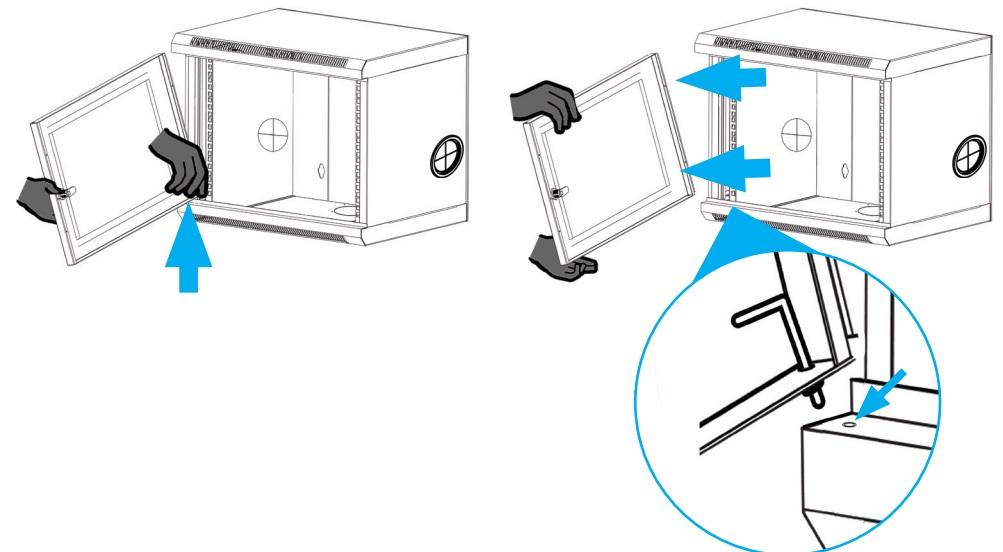


Figure 2

3. **Re-orientate** the **Door** so that the **Pins** are located on the **Opposite Side**, with the **Front** of the **Door Facing Outwards**. (Figure 3)

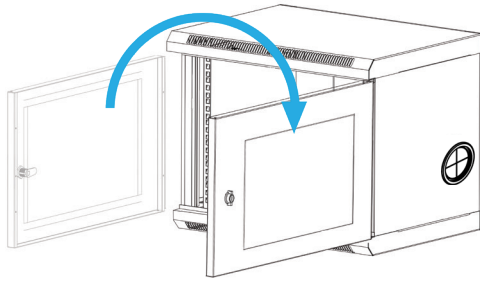


Figure 3

4. Install the **Washer** (retained in **Step 2**) onto the **Bottom Pin** on the **Lower Inside Corner** of the **Door**. (Figure 4)

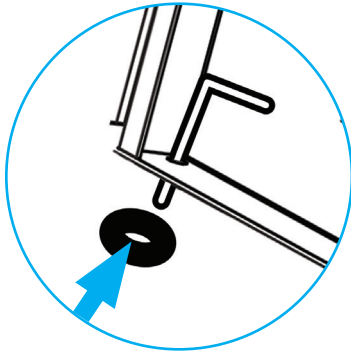


Figure 4

5. With the top corner of the door angled slightly away from the enclosure, gently **Insert** the **Bottom Pin**, ensuring it is **Fully Extended** into the **Washer** and the **Lower Hinge Hole**. (Figure 5)

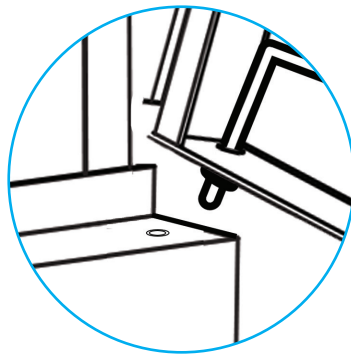


Figure 5

6. With the **Bottom Pin** partially installed, **Pull** the **Top Pin Handle Down** and swing the **Top Corner** of the **Door** toward the **Upper Hinge Hole**. **Align** the **Retracted Top Pin** with the **Upper Hinge Hole** and **Release** the **Pin Handle**, ensuring the **Pin** is **Fully Extended** into the **Upper Hinge Hole**. (Figure 6)

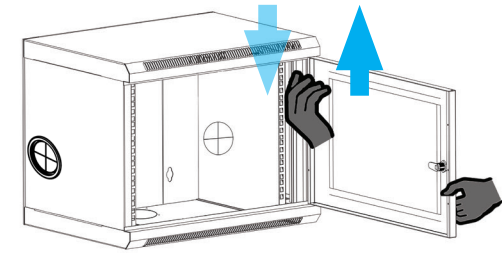


Figure 6

Regulatory Compliance

Use of Trademarks, Registered Trademarks, and other Protected Names and Symbols

This manual may make reference to trademarks, registered trademarks, and other protected names and/or symbols of third-party companies not related in any way to StarTech.com. Where they occur these references are for illustrative purposes only and do not represent an endorsement of a product or service by StarTech.com, or an endorsement of the product(s) to which this manual applies by the third-party company in question. StarTech.com hereby acknowledges that all trademarks, registered trademarks, service marks, and other protected names and/or symbols contained in this manual and related documents are the property of their respective holders.

PHILLIPS® is a registered trademark of Phillips Screw Company in the United States or other countries.

Warranty Information

This product is backed by a lifetime warranty.

For further information on product warranty terms and conditions, please refer to www.startech.com/warranty.

Limitation of Liability

In no event shall the liability of StarTech.com Ltd. and StarTech.com USA LLP (or their officers, directors, employees or agents) for any damages (whether direct or indirect, special, punitive, incidental, consequential, or otherwise), loss of profits, loss of business, or any pecuniary loss, arising out of or related to the use of the product exceed the actual price paid for the product. Some states do not allow the exclusion or limitation of incidental or consequential damages. If such laws apply, the limitations or exclusions contained in this statement may not apply to you.



StarTech.com Ltd.
45 Artisans Crescent
London, Ontario
N5V 5E9
Canada

StarTech.com LLP
4490 South Hamilton
Road
Groveport, Ohio
43125
U.S.A.

StarTech.com Ltd.
Unit B, Pinnacle 15
Gowerton Road
Brackmills,
Northampton
NN4 7BW
United Kingdom

StarTech.com Ltd.
Siriusdreef 17-27
2132 WT Hoofddorp
The Netherlands

FR: startech.com/fr
DE: startech.com/de
ES: startech.com/es
NL: startech.com/nl
IT: startech.com/it
JP: startech.com/jp