

WF-3820/WF-4820/WF-4830 Series Start Here

IMPORTANT: Before using this product, make sure you read these instructions and the safety instructions in the online *User's Guide*.

Note: This printer is designed for use with Epson® cartridges only, not third-party cartridges or ink. For important ink information, visit www.epson.com/epsonink (U.S.) or www.epson.ca/epsonink (Canada) or see your printer box.

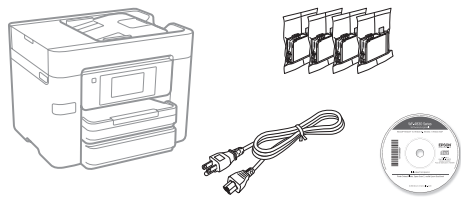
Important Safety Instructions: When using telephone equipment, you should always follow basic safety precautions to reduce the risk of fire, electric shock, and personal injury, including the following:

- Do not use the Epson product near water.
- Always keep this guide handy.
- Avoid using a telephone during an electrical storm. There may be a remote risk of electric shock from lightning.
- Do not use a telephone to report a gas leak in the vicinity of the leak.

Caution: To reduce the risk of fire, use only a No. 26 AWG or larger telecommunication line cord.

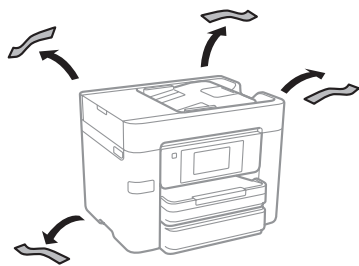
The illustrations show the WF-4830, but the steps are the same for all models, unless otherwise specified.

1 Unpack

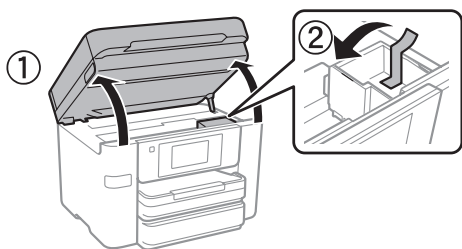


Note: Do not open the ink cartridge packages until you are ready to install the ink. Cartridges are vacuum packed to maintain reliability.

- 1 Remove all protective materials from the product.

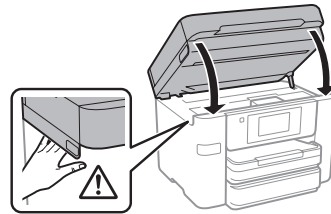


- 2 Lift up the scanner unit until it locks into place and remove all protective materials from inside the product.



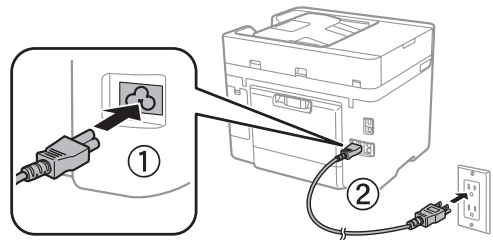
Caution: Do not touch the flat white cable.

- 3 Lower the scanner unit.



2 Turn on and configure

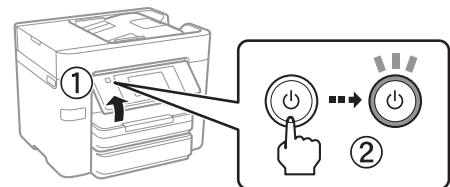
- 1 Connect the power cord to the back of the product and to an electrical outlet.



Caution: Do not connect to your computer yet.

Note: If an error code appears, turn off the product and check that no protective material has been left inside the product.

- 2 Raise the control panel and turn on the product.



- 3 Select your language, country, date, and time on the LCD screen.

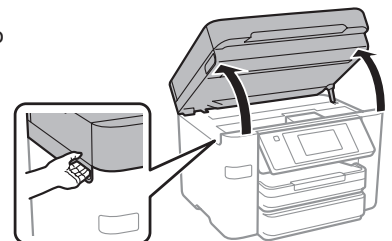
Note: You can change these settings later using the product's control panel. For more information, see the online *User's Guide*.

3 Install ink cartridges

Caution: Keep the ink cartridges out of the reach of children and do not drink the ink.

Note: The included initial cartridges are designed for reliable printer setup and cannot be used as replacement cartridges or resold. After setup, the remaining ink is available for printing.

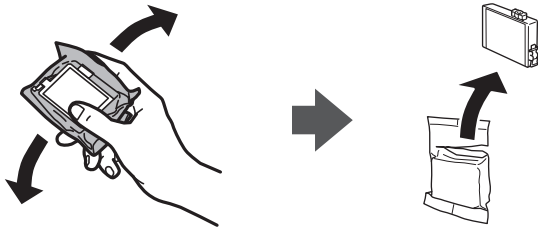
- 1 Lift up the scanner unit until it locks into place.



413953400

EPSON®
EXCEED YOUR VISION

- 2** Gently shake the ink cartridges, and remove them from the packaging.

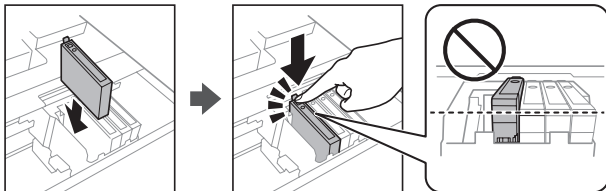


- 3** Remove only the yellow tape from each ink cartridge.

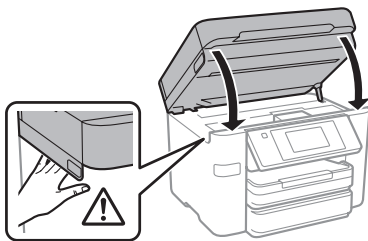


Caution: Do not touch the areas shown above. Doing so may prevent normal operation and printing.

- 4** Insert the cartridge in the holder for each color. Press each cartridge down until it clicks. Make sure all cartridges are pushed down into place.



- 5** Lower the scanner unit.



- 6** **WF-3820:** Follow the on-screen instructions to start charging the ink.

WF-4820/WF-4830: Ink charging begins automatically.

Ink charging takes approximately 5 minutes. When you see a completion message on the product's LCD screen, charging is complete.

Caution: Don't turn off the printer or raise the scanner unit while the printer is charging or you'll waste ink.

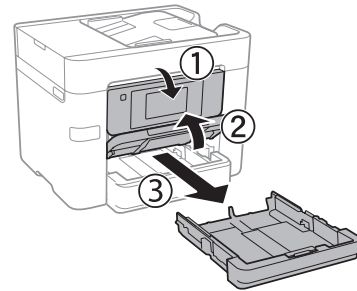
Note: As part of setup, your product's serial number will be sent to a secure Epson server so that you can be eligible to participate in programs we may offer from time to time, including the Epson ink replenishment program. You will have a separate opportunity to consent to participating in such programs.

- 7** Follow the on-screen instructions to select paper settings.

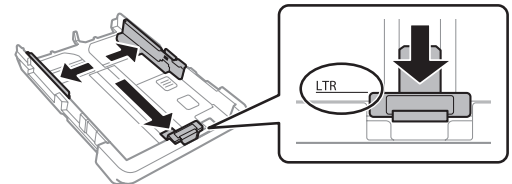
4 Load paper

See the online *User's Guide* for information about loading capacity, available paper types and sizes, loading envelopes, and using the ADF.

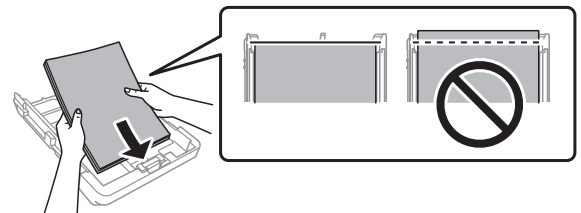
- 1** Make sure the product is done charging the ink, and then lower the control panel, lift the output tray, and pull out the paper cassette.



- 2** Slide the side edge guides all the way out and set the front edge guide to the paper size you are using.

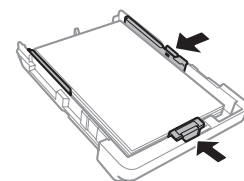


- 3** Insert paper with the glossy or printable side down.

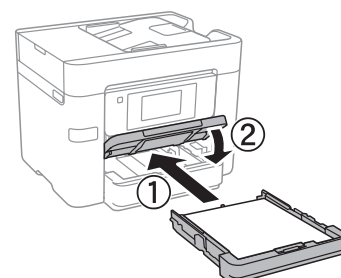


Note: Make sure the paper is loaded against the front edge guide and not sticking out from the end of the cassette.

- 4** Slide the edge guides against the paper, but not too tightly.



- 5** Keep the cassette flat as you insert it all the way, then lower the output tray.



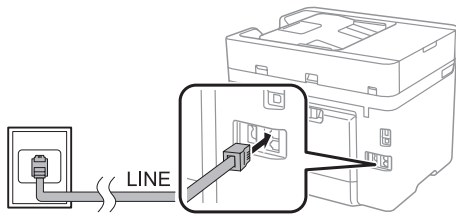
- 6 Pull out the output tray extension.



- 7 Select the paper settings on the product's control panel.

5 Connect the fax line

- 1 Connect a phone cord to a telephone wall jack and to the **LINE** port on your product. See the online *User's Guide* for more information.



- 2 **WF-3820:** Press **Proceed** to set up the fax, or press **Set Up Later** to set it up later.

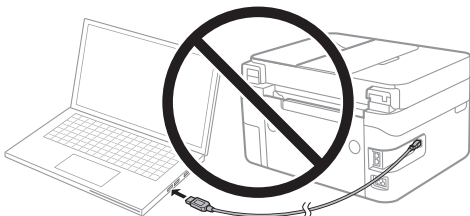
WF-4820/WF-4830: Press **Proceed** to set up the fax, or press **Close** to set it up later.

6 Install software

Note: If you are using a Mac or your computer does not have a CD/DVD drive, an Internet connection is required to obtain the product software.

Firmware Update Notice: The printer is designed to work only with genuine Epson-branded cartridges. Other brands of ink cartridges and ink supplies are not compatible and, even if described as compatible, may not function properly or at all. Epson periodically provides firmware updates to address issues of security, performance, minor bug fixes and ensure the printer functions as designed. These updates may affect the functionality of third-party ink. Non-Epson branded or altered Epson cartridges that functioned prior to a firmware update may not continue to function.

- 1 Make sure the product is **NOT CONNECTED** to your computer.



Windows®: If you see a Found New Hardware screen, click **Cancel** and disconnect the USB cable.

- 2 Insert the product CD or download and run your product's software package. For the latest software, visit www.epson.com/support (U.S.) or www.epson.ca/support (Canada) and search for your product.

- 3 Follow the instructions on the computer screen to run the setup program.

- 4 When you see the Select Your Connection screen, select one of the following and follow the on-screen instructions:

- **Wireless connection**

In most cases, the software installer automatically attempts to set up your wireless connection. If setup is unsuccessful, you may need to enter your network name (SSID) and password.

- **Direct USB connection**

Make sure you have a USB cable (not included).

- **Wired network connection**

Make sure you have an Ethernet cable (not included).

Mobile and voice-activated printing

- Print directly from your smartphone or tablet using iOS or Android™ with Epson iPrint™. Simply connect your printer and device to the same network and tap the action icon to select the print option.
- Print directly from your Android (v4.4 or later) device*. Simply connect your printer and device to the same network and tap the menu icon to select the print option.
- Print from wherever you are, next to your printer or remotely with Epson Connect™. Learn more at www.epson.com/connect (U.S.) or www.epson.ca/connect (Canada).
- Use voice-activated assistants to print a variety of creative and everyday items from your Epson product. Simply add your product to an Epson Connect account, then link the account to a voice-activated assistant. See www.epson.com/voice (U.S.) or www.epson.ca/voice (Canada) for more information.

* May require the Epson Print Enabler or Mopria Print Service app from Google Play™.

Any problems?

Network setup was unsuccessful.

- Print a network connection report to identify network problems and solutions. See your online *User's Guide* for instructions.
- Make sure you select the right network name (SSID).
- Restart your router (turn it off and then on), then try to connect to it again.
- If you see a firewall alert message, click **Unblock** or **Allow** to let setup continue.
- If your network has security enabled, make sure you enter your network password (WEP key or WPA passphrase) correctly. Be sure to enter your password in the correct case.

There are lines or incorrect colors in my printouts.

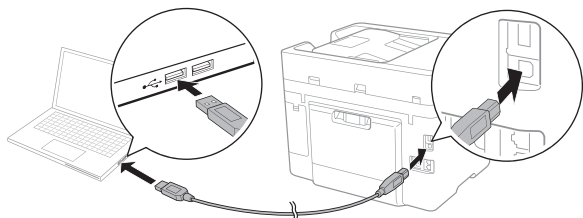
Run a nozzle check to see if there are any gaps in the printout. Then clean the print head, if necessary. See the online *User's Guide* for more information.

The product's screen is dark.

Make sure your product is turned on, and touch the screen or power button to wake it from sleep mode.

Setup is unable to find my printer after connecting it with a USB cable.

Make sure your product is securely connected as shown:



Need paper and ink?

Ensure brilliant results with Epson specialty and plain papers, engineered specifically for Epson printers. Find Epson papers and Epson Genuine Ink at www.epson.com (U.S. sales) or www.epson.ca (Canadian sales) and at Epson authorized resellers. Call 800-GO-EPSON (800-463-7766).



DESIGNED *for* EXCELLENCE™

Epson printers, ink and specialty papers.

DURABrite Ultra INK

WF-3820/WF-4820/WF-4830 replacement ink cartridges

Color	Standard-capacity	High-capacity
Black	822	822XL
Cyan	822	822XL
Magenta	822	822XL
Yellow	822	822XL

Any questions?

User's Guide

Windows: Click the icon on your desktop or Apps screen to access the online *User's Guide*.

Mac: Click the icon in Applications/Epson Software/Guide to access the online *User's Guide*.

If you don't have a User's Guide icon, go to the Epson website, as described below.

Videos

Visit www.epson.com/support (U.S.) or www.epson.ca/support (Canada) and search for your product to view support videos.

Support

Visit www.epson.com/support (U.S.) or www.epson.ca/support (Canada) and search for your product to download drivers, view videos, view manuals, get FAQs, or contact Epson.

Call (562) 276-4382 (U.S.) or (905) 709-3839 (Canada), 6 AM to 8 PM, Pacific Time, Monday through Friday, and 7 AM to 4 PM, Pacific Time, Saturday. Days and hours of support are subject to change without notice. Toll or long distance charges may apply.

Recycling

Epson offers a recycling program for end-of-life hardware and ink cartridges. Please go to www.epson.com/recycle (U.S.) or www.epson.ca/recycle (Canada) for information on how to return your products for proper disposal.



EPSON and DURABrite are registered trademarks, EPSON Exceed Your Vision is a registered logomark, and Epson Connect is a trademark of Seiko Epson Corporation.

Designed for Excellence is a trademark of Epson America, Inc.

Windows is a registered trademark of Microsoft Corporation in the United States and/or other countries.

Mac is a trademark of Apple Inc., registered in the U.S. and other countries.

Android and Google Play are trademarks of Google LLC.

General Notice: Other product names used herein are for identification purposes only and may be trademarks of their respective owners. Epson disclaims any and all rights in those marks.

This information is subject to change without notice.