

## Black Standard Universal Server Rack Cabinet Shelf

CABSHELF

- DE: Bedienungsanleitung - de.startech.com
- FR: Guide de l'utilisateur - fr.startech.com
- ES: Guía del usuario - es.startech.com
- IT: Guida per l'uso - it.startech.com
- NL: Gebruiksaanwijzing - nl.startech.com
- PT: Guia do usuário - pt.startech.com

### Package Contents

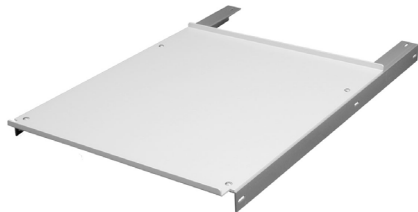
- 1 x Fixed Shelf for 7230CABINET
- 4 x M6 Cage Nuts
- 4 x M6 Screws

### Installation

1. Short Shelf - There is no assembly required to the shelf itself. To mount the shelf into the cabinet decide where on the posts you would like the shelf to go. Screw the shelf into place.

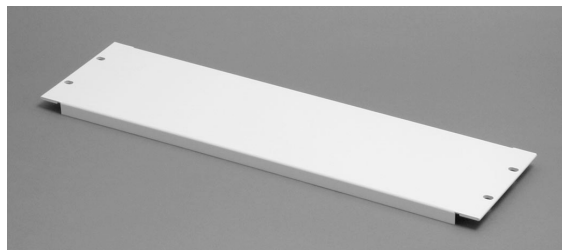


2. Deep Shelf - Before installing the deep shelf into the cabinet you must first join the mounting bracket to the shelf using the screws and nuts provided. Move the nuts in the cabinet to the desired height and fasten the shelf's brackets to the front and rear posts.



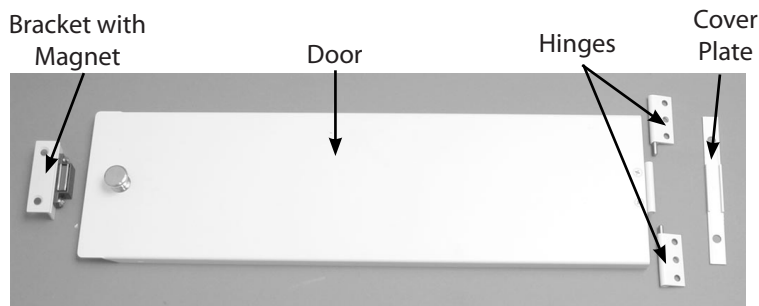
### Blank Panel

1. There is no assembly required to the panel itself. To mount the panel into the cabinet decide where on the posts you would like the panel to go. Screw the panel into place.

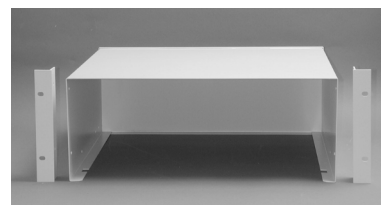


### Hinged Panel

1. To assemble the hinged panel you must first put the hinges into the holes on the door. Mount the door onto the cabinet rails using the screws provided. Secure the cover plate to the cabinet rail covering up the hinges using the screws provided. Line up the bracket containing the magnet so the when you close the door it attaches to the magnet.



### Cabinet Drawer



1. Attach the mounting brackets to the side of the outer casing of the drawer using the screws and nuts provided.



2. Attach the magnetic bracket to the inside of the outer casing of the drawer using the screws provided. The magnetic side of the bracket should face inward so that when the drawer is closed the back of the drawer sticks to the magnet.



3. Open the sliding rail fully. Match the holes of the rail with the holes of the inside drawer. Using the screws and nuts provided attach the rail to the inside drawer. Repeat these steps for the rail on the other side.



4. With the slide rail fully extended line the holes of the sliding rail with the holes on the outer casing of the drawer. Using the screws and nuts provided attach the rail to the outer casing. Repeat these steps for the rail on the other side.



5. Line the holes in the mounting brackets with those on the cabinet posts. Using the screws provided mount the drawer to the cabinet posts.

**\*Actual product may vary from Photos**

## Use of Trademarks, Registered Trademarks, and other Protected Names and Symbols

This manual may make reference to trademarks, registered trademarks, and other protected names and/or symbols of third-party companies not related in any way to StarTech.com. Where they occur these references are for illustrative purposes only and do not represent an endorsement of a product or service by StarTech.com, or an endorsement of the product(s) to which this manual applies by the third-party company in question. Regardless of any direct acknowledgement elsewhere in the body of this document, StarTech.com hereby acknowledges that all trademarks, registered trademarks, service marks, and other protected names and/or symbols contained in this manual and related documents are the property of their respective holders.

## Technical Support

StarTech.com's lifetime technical support is an integral part of our commitment to provide industry-leading solutions. If you ever need help with your product, visit [www.startech.com/support](http://www.startech.com/support) and access our comprehensive selection of online tools, documentation, and downloads.

For the latest drivers/software, please visit [www.startech.com/downloads](http://www.startech.com/downloads)

## Warranty Information

This product is backed by a lifetime warranty.

In addition, StarTech.com warrants its products against defects in materials and workmanship for the periods noted, following the initial date of purchase. During this period, the products may be returned for repair, or replacement with equivalent products at our discretion. The warranty covers parts and labor costs only. StarTech.com does not warrant its products from defects or damages arising from misuse, abuse, alteration, or normal wear and tear.

## Limitation of Liability

In no event shall the liability of StarTech.com Ltd. and StarTech.com USA LLP (or their officers, directors, employees or agents) for any damages (whether direct or indirect, special, punitive, incidental, consequential, or otherwise), loss of profits, loss of business, or any pecuniary loss, arising out of or related to the use of the product exceed the actual price paid for the product. Some states do not allow the exclusion or limitation of incidental or consequential damages. If such laws apply, the limitations or exclusions contained in this statement may not apply to you.