

HP EliteDesk 800 35W G4 Desktop Mini PC



Deploy a PC built for the enterprise with 8th Gen Intel® Core™ processors.³ The HP EliteDesk 800 Desktop Mini has performance, reliability, and expandability for today's workforce in a stylish and versatile design.



HP recommends Windows 10 Pro.

- Windows 10 Pro¹
- HP Sure Start Gen4²

Streamlined for a clean workspace

Take your footprint down to near zero with a PC that mounts behind and is powered by an HP EliteDisplay.^{4,5} Place it almost anywhere with HP Desktop Mini accessories.⁴ Reduce connection clutter with a single short USB-C™ cable⁶ and rear I/O ports.

Meet the mighty Mini

Create panoramic views of static and dynamic imagery on up to 7 daisy-chained displays⁷ from one PC. Transfer data fast with an optional Thunderbolt™ card.^{4,8} Expand even more with options like Intel® Optane™ memory⁹ or an M.2 SSD PCIe Drive.^{4,10}

Enhanced data and device security

Get a highly secure PC with the self-healing protection of HP Sure Start Gen4.² Integrate into the most secure network infrastructures with an optional fiber network adapter.⁴ Store and lock your Mini and power cord in the optional HP Lock Box.⁴

Expansion that extends your investment

Maximize PC life as your business needs change with an optional⁴ serial port for legacy devices; VGA, HDMI, Display Port™ or USB-C™ DisplayPort™ Alt-Mode for displays; USB-C™ Power¹¹ to draw power or Thunderbolt™⁸ for fast connections.

Featuring

- Be productive in any situation with Windows 10 Pro and powerful security, collaboration, and connectivity features from HP.¹
- Customize your HP Elite Desktop Mini solution with a range of exclusive accessories designed to simplify display, wall, and rack mounting.⁴
- Enhance collaboration with the optional HP UC Speaker Phone, Intel® Unite™ or the HP Conferencing Keyboard and HP UC Wireless Duo Headset that work with Skype for Business®.^{4,4,4,4}
- Protect your PC with the hardware-enforced self-healing protection of HP Sure Start Gen4 that automatically recovers the BIOS.²
- Quickly and securely restore PCs to the latest image using a network connection with HP Sure Recover.¹²
- Keep your critical applications and processes running even if malware tries to shut them down with the self-healing protection of HP Sure Run.¹³
- Help protect your PC from websites, attachments, malware, ransomware, and viruses with hardware-enforced security from HP Sure Click.¹⁴
- The HP Manageability Integration Kit helps speed up image creation and management of hardware, BIOS, and security through Microsoft System Center Configuration Manager¹⁵
- Keep data out of reach and defend against theft, attacks, and unauthorized users with HP Client Security Manager Gen4.¹⁶
- ITDMs can quickly help create, improve, and secure custom Windows images with HP Image Assistant Gen3.
- Rest easy with a PC that goes the distance and is designed to pass HP Total Test Process and MIL-STD 810G testing.

HP EliteDesk 800 35W G4 Desktop Mini PC Specifications Table



| | |
|--|--|
| Form Factor | Mini |
| Available Operating System | Windows 10 Pro 64 – HP recommends Windows 10 Pro. ¹ Windows 10 Pro 64 (National Academic only) ² FreeDOS 2.0 |
| Processor Family¹⁷ | Intel® Pentium® processor (G5400T, G5500T are Windows 10 only) 8th Generation Intel® Core™ i3 processor (i3-8100T, i3-8300T) 8th Generation Intel® Core™ i5 processor (i5-8500T, i5-8600T) 8th Generation Intel® Core™ i7 processor (i7-8700T) 8th Generation Intel® Core™ i5+ processor (i5-8500T, i5-8600T) 8th Generation Intel® Core™ i7+ processor (i7-8700T) |
| Available Processors^{3,35,36,37} | Intel® Pentium® Gold G5400T with Intel® UHD Graphics 610 (3.1 GHz, 4 MB cache, 2 cores) Intel® Pentium® Gold G5500T with Intel® UHD Graphics 630 (3.2 GHz, 4 MB cache, 2 cores) Intel® Core™ i3-8100T with Intel® UHD Graphics 630 (3.1 GHz, 6 MB cache, 4 cores) Intel® Core™ i3-8300T with Intel® UHD Graphics 630 (3.2 GHz, 8 MB cache, 4 cores) Intel® Core™ i5+ 8500T vPro™ processor (Core™ i5 and 16 GB Intel® Optane™ memory) with Intel® UHD Graphics 630 (2.1 GHz base frequency, up to 3.5 GHz with Intel® Turbo Boost Technology, 9 MB cache, 6 cores) Intel® Core™ i5+ 8600T vPro™ processor (Core™ i5 and 16 GB Intel® Optane™ memory) with Intel® UHD Graphics 630 (2.3 GHz base frequency, up to 3.7 GHz with Intel® Turbo Boost Technology, 9 MB cache, 6 cores) Intel® Core™ i5-8500T vPro™ processor with Intel® UHD Graphics 630 (2.1 GHz base frequency, up to 3.5 GHz with Intel® Turbo Boost Technology, 9 MB cache, 6 cores) Intel® Core™ i5-8600T vPro™ processor with Intel® UHD Graphics 630 (2.3 GHz base frequency, up to 3.7 GHz with Intel® Turbo Boost Technology, 9 MB cache, 6 cores) Intel® Core™ i7+ 8700T vPro™ processor (Core™ i7 and 16 GB Intel® Optane™ memory) with Intel® UHD Graphics 630 (2.4 GHz base frequency, up to 4 GHz with Intel® Turbo Boost Technology, 12 MB cache, 6 cores) Intel® Core™ i7-8700T vPro™ processor with Intel® UHD Graphics 630 (2.4 GHz base frequency, up to 4 GHz with Intel® Turbo Boost Technology, 12 MB cache, 6 cores) |
| Chipset | Intel® Q370 |
| Maximum Memory | 32 GB DDR4-2666 SDRAM ^{4,13} (Transfer rates up to 2666 MT/s.) |
| Memory Slots | 2 SODIMM |
| Internal Storage | 500 GB up to 1 TB 7200 rpm SATA ⁵ 2 TB 5400 rpm SATA ⁵ 500 GB SATA SED Opal 2 HDD ⁵ 500 GB 7200 rpm SATA FIPS SED ⁵ 256 GB up to 512 GB SATA SED Opal 2 TLC SSD ⁵ 256 GB up to 512 GB SATA FIPS SSD ⁵ 128 GB up to 512 GB PCIe® NVMe™ M.2 SSD ⁵ 128 GB up to 1 TB PCIe® NVMe™ TLC M.2 SSD ⁵ 256 GB up to 512 GB PCIe® NVMe™ SED Opal 2 TLC M.2 SSD ⁵ |
| Available Graphics | Integrated: Intel® UHD Graphics 630; Intel® UHD Graphics 610 Discrete: AMD Radeon™ RX 560 Graphics (4 GB GDDR5 dedicated) |
| Audio | Conexant CX20632 codec, universal audio jack, headset and headphone front ports (3.5 mm), multi-streaming capable |
| Communications | LAN: Integrated Intel® I219LM GbE LOM WLAN: Intel® Dual Band Wireless-AC 9560 802.11ac (2x2) and Bluetooth® 5 M.2, non-vPro™; Intel® Dual Band Wireless-AC 9560 802.11ac (2x2) and Bluetooth® 5 M.2, vPro™ ⁷ |

| | |
|-------------------------------------|---|
| Expansion Slots | 1 M.2 2230; 2 M.2 2230/2280 (1 M.2 slot for WLAN and 2 M.2 2230/2280 slot for storage.) |
| Ports and Connectors | Rear: 1 external antenna connector; 1 power connector; 1 RJ-45; 2 DisplayPort™ 1.2; 2 USB 3.1 Gen 1; 2 USB 3.1 Gen 2 Front: 1 headphone; 1 headset connector; 1 USB 3.1 Gen 1 (charging); 1 USB 3.1 Gen 2; 1 USB 3.1 Type-C™ Gen 2 Optional: 1 DisplayPort™ 1.2; 1 HDMI 2.0; 1 serial; 1 USB 3.1 Type-C™ Gen 1 (DisplayPort™); 1 USB 3.1 Type-C™ Gen 1 (Power Delivery, DisplayPort™); 1 USB 3.1 Type-C™ Gen 2 (with Thunderbolt™); 1 VGA |
| Internal Drive Bays | One 2.5" HDD ³⁴ |
| Available Software | Absolute Persistence module; HP ePrint Driver + JetAdvantage; HP Hotkey Support; HP Jumpstart; HP Noise Cancellation Software; HP PhoneWise; HP Support Assistant; Native Miracast Support; HP Wireless Wakeup; Buy Office (sold separately); HP Sure Recover ^{9,18,19,20,22} |
| Security Management | DriveLock; Hood sensor; HP BIOSphere; HP Client Security Suite Gen 4; HP Password Manager; HP Power On Authentication; HP Sure Run; HP Sure Start Gen 4; Intel® Identity Protection Technology (Intel® IPT); Parallel enable/disable (via BIOS); Power-on password (via BIOS); RAID configurations; Removable media write/boot control; SATA port disablement (via BIOS); Serial enable/disable (via BIOS); Setup password (via BIOS); Support for chassis padlocks and cable lock devices; Trusted Platform Module TPM 2.0 Embedded Security Chip shipped with Windows 10 (Common Criteria EAL4+ Certified)(FIPS 140-2 Level 2 Certified); USB enable/disable (via BIOS) ^{11,25,26,27,28,29,30,31,32} |
| Management Features | HP BIOS Config Utility (download); HP Client Catalog (download); HP Driver Packs (download); HP System Software Manager (download); Intel® vPro™ Technology; Ivanti Management Suite; HP Management Integration Kit for Microsoft System Center Configuration Management Gen 2 ^{10,23,24} |
| Power | 150 W external power adapter, up to 89% efficiency, active PFC; 65 W external power adapter, up to 89% efficiency ¹⁶ |
| Dimensions | 6.96 x 6.88 x 1.33 in 17.7 x 17.5 x 3.4 cm |
| Weight | 2.13 lb 0.96 kg (Exact weight depends on configuration.) |
| Environmental | Low halogen ¹⁵ |
| Energy Efficiency Compliance | ENERGY STAR® certified; EPEAT® Gold ¹² |

HP EliteDesk 800 35W G4 Desktop Mini PC

Accessories and services (not included)

**HP EliteDisplay E243
23.8-inch Monitor**



Style meets substance in a strikingly modern business display crafted for optimal viewing, productivity, and ergonomics. The HP EliteDisplay E243 23.8-inch Monitor has a 3-sided micro-edge bezel for seamless multi-display tiling and 4-way adjustability so you can comfortably power through your day.
Product number: 1FH47A8

HP EliteDisplay E273 27-inch Monitor



Style meets substance in a strikingly modern business display crafted for optimal viewing, productivity, and ergonomics. The HP EliteDisplay E273 27-inch Monitor has a 3-sided micro-edge bezel for seamless multi-display tiling and 4-way adjustability so you can comfortably power through your day.
Product number: 1FH50A8

HP 8GB DDR4-2400 SoDIMM



Boost the capabilities of your HP Business Desktop PC and improve system performance and application responsiveness with low-power, high-speed DDR4 memory from HP.
Product number: Z9H56AT

HP TLC 256 GB SATA SSD



Expand the storage capabilities of your desktop with the HP TLC 256 GB SATA SSD¹, which includes TLC flash and the same reliability you already get from current from SSD drives.
Product number: P1N68AT

HP B300 PC Mounting Bracket



Customize an altogether better solution with the HP B300 PC Mounting Bracket, which lets you attach your HP Workstation, HP Desktop Mini, HP Chromebox or select HP Thin Client directly behind select 2017 and 2018 HP EliteDisplays and HP Z Displays.¹
Product number: 2DW53AT

HP Desktop Mini G3 Port Cover Kit



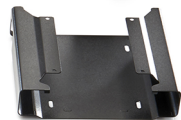
Help prevent unauthorized access to the rear ports of your HP Desktop Mini with HP Desktop Mini G3 Port Cover Kit.
Product number: 1ZE52AT

HP Integrated Work Center for Desktop Mini and Thin Client



Make the most of small work spaces with an HP IWC Desktop Mini/Thin Client that lets you create a compact desktop solution by combining a display¹ with an HP Desktop Mini, HP Thin Client or HP Chromebox¹ and giving you convenient front access to all of its inputs.
Product number: G1V61AT

HP Desktop Mini Security/Dual VESA Sleeve v2



Wrap your HP Desktop Mini PC in the HP Desktop Mini Security/Dual VESA Sleeve v2 to securely mount it—with or without an Expansion Module¹—behind your display, position the solution on a wall, and lock it down with the integrated security bracket and optional HP Ultra-Slim Cable Lock.
Product number: 2JA32AT

HP DM VESA Power Supply Holder Kit



Simplify cable management when mounting your HP Desktop Mini with the HP DM VESA Power Supply Holder Kit, which attaches to your HP Desktop Mini Security/Dual VESA Sleeve v2 (2JA32AA) to reduce cable clutter from the PC's power supply cable and brick.
Product number: 1RL87AT

HP 4 year Next Business Day Onsite Hardware Support for Desktops



When hardware issues come up, the sooner you can get running again, the better. Have expertise at the ready with HP Hardware Next Business Day Onsite Service, and vastly improve your product uptime. With high-quality remote assistance or convenient onsite support available the next business day, help is there when you need it—so you can get back to work.
Product number: U7897E (for 4 year platforms), U7899E (for 5 year platforms)

Messaging Footnotes

- ¹ Not all features are available in all editions or versions of Windows. Systems may require upgraded and/or separately purchased hardware, drivers, software or BIOS update to take full advantage of Windows functionality. Windows 10 is automatically updated, which is always enabled. ISP fees may apply and additional requirements may apply over time for updates. See <http://www.windows.com>.
- ² HP Sure Start Gen4 is available on HP Elite and HP Pro 600 products equipped with 8th generation Intel® or AMD processors.
- ³ Multi-Core is designed to improve performance of certain software products. Not all customers or software applications will necessarily benefit from use of this technology. Performance and clock frequency will vary depending on application workload and your hardware and software configurations. Intel's numbering, branding and/or naming is not a measurement of higher performance.
- ⁴ Sold separately or as an optional feature.
- ⁵ Power delivery only supported on model with 35W 8th Gen Intel® Core™ processor and displays with USB-C™ power delivery. Display sold separately. Mounting requires HP B300 or B500 PC Mounting Bracket for Monitors, sold separately. See display QuickSpecs for bracket guidance.
- ⁶ Short USB-C™ cable included with PC configured with optional USB-C™ DisplayPort™ Alt-Mode w/Power Delivery port or USB-C™ DisplayPort™ Alt-Mode only port.
- ⁷ System sold separately. Only supported on model with 35W 8th Gen Intel® Core™ processor and optional discrete AMD Radeon™ graphics. 35W processor model can be configured with an AMD Radeon™ RX560 graphics or Thunderbolt™ card; it cannot be configured with both options together.
- ⁸ Only supported on model with 35W or 65W 8th Gen Intel® Core™ processor. If Thunderbolt™ card is configured, no other optional I/O may be selected.
- ⁹ Intel® Optane™ memory system acceleration does not replace or increase the DRAM in your system and requires configuration with an optional Intel® Core™ i(5 or 7)+ processor.
- ¹⁰ The HP EliteDesk 800 G4 Desktop Mini supports two M.2 SSD drives. On the model with 35W 8th Gen Intel® Core™ processor, only one M.2 drive can be populated if an optional discrete graphics card is installed.
- ¹¹ HP Sure Recover is available on HP Elite PCs with 8th generation Intel® or AMD processors and requires an open, wired network connection. Not available on platforms with multiple internal storage drives or Intel® Optane™. You must back up important files, data, photos, videos, etc. before using HP Sure Recover to avoid loss of data.
- ¹² HP Sure Run is available on HP Elite products equipped with 8th generation Intel® or AMD processors.
- ¹³ HP Sure Click is available on select HP platforms and supports Microsoft® Internet Explorer, Chrome OS™, and Chromium™. Supported attachments include Microsoft Office (Word, Excel, PowerPoint) and Adobe® PDF files in read-only mode. Check <http://h20195.www2.hp.com/v2/GetDocument.aspx?docname=4AA7-0922ENW> for all compatible platforms as they become available.

Technical Specifications Footnotes

- ¹ Not all features are available in all editions or versions of Windows. Systems may require upgraded and/or separately purchased hardware, drivers, software or BIOS update to take full advantage of Windows functionality. Windows 10 is automatically updated, which is always enabled. ISP fees may apply and additional requirements may apply over time for updates. See <http://www.windows.com/>.
- ² Some devices for academic use will automatically be updated to Windows 10 Pro Education with the Windows 10 Anniversary Update. Features vary; see <https://aka.ms/ProEducation> for Windows 10 Pro Education feature information.
- ³ Multi-core is designed to improve performance of certain software products. Not all customers or software applications will necessarily benefit from use of this technology. Performance and clock frequency will vary depending on application workload and your hardware and software configurations. Intel's numbering, branding and/or naming is not a measurement of higher performance.
- ⁴ For systems configured with more than 3 GB of memory and a 32-bit operating system, all memory may not be available due to system resource requirements. Addressing memory above 4 GB requires a 64-bit operating system. Memory modules support data transfer rates up to 2133 MT/s; actual data rate is determined by the system's configured processor. See processor specifications for supported memory data rate. All memory slots are customer accessible / upgradeable.
- ⁵ For hard drives and solid state drives, GB = 1 billion bytes. TB = 1 trillion bytes. Actual formatted capacity is less. Up to 36 GB (for Windows 10) of system disk is reserved for the system recovery software.
- ⁶ Wireless access point and internet service required. The specifications for the 802.11ac WLAN are draft specifications and are not final. If the final specifications differ from the draft specifications, it may affect the ability of the notebook to communicate with other 802.11ac WLAN devices.
- ⁷ Antimicrobial USB Mouse and HP USB Hardened Mouse are not available in all regions.
- ⁸ Miracast is a wireless technology your PC can use to project your screen to TVs, projectors, and streaming.
- ⁹ HP Driver Packs: Not preinstalled, however available for download at <http://www.hp.com/go/clientmanagement>
- ¹⁰ HP BIOSphere Gen4: Requires Intel® or AMD 8th Gen processors. Features may vary depending on the platform and configurations.
- ¹¹ EPEAT® registered where applicable. EPEAT registration varies by country. See www.epeat.net for registration status by country. See HP's 3rd party option store for solar energy accessory www.hp.com/go/options.
- ¹² All memory slots are customer accessible / upgradeable.
- ¹³ HP USB and PS/2 Washable Keyboard: PS/2 port not available on EliteOne 800 G4 AIOs.
- ¹⁴ External power supplies, power cords, cables and peripherals are not Low Halogen. Service parts obtained after purchase may not be Low Halogen.
- ¹⁵ 150 W external power adapter, up to 89% efficiency, active PFC: when ordered with an AMD Radeon RX 560 with 4GB GDDR discrete graphics card.
- ¹⁶ Your product does not support Windows 8 or Windows 7, in accordance with Microsoft's support policy, HP does not support the Windows 8 or Windows 7 operating system on products configured with Intel® 8th generation and forward processors or provide any Windows 8 or Windows 7 drivers on <http://www.support.hp.com>
- ¹⁷ Absolute Persistence Module: Absolute agent is shipped turned off, and will be activated when customers activate a purchased subscription. Subscriptions can be purchased for terms ranging multiple years. Service is limited, check with Absolute for availability outside the U.S. The Absolute Recovery Guarantee is a limited warranty. Certain conditions apply. For full details visit: <http://www.absolute.com/company/legal/agreements/computrace-agreement>. Data Delete is an optional service provided by Absolute Software. If utilized, the Recovery Guarantee is null and void. In order to use the Data Delete service, customers must first sign a Pre-Authorization Agreement and either obtain a PIN or purchase one or more RSA SecurID tokens from Absolute Software.
- ¹⁸ HP ePrint Driver: Requires an Internet connection to HP web-enabled printer and HP ePrint account registration (for a list of eligible printers, supported documents and image types and other HP ePrint details, see www.hp.com/go/eprintcenter). Print times and connection speeds may vary.
- ¹⁹ HP Support Assistant: Requires Windows and Internet access.
- ²⁰ HP Sure Recover: is available on HP Elite PCs with 8th generation Intel® or AMD processors and requires an open, wired network connection. Not available on platforms with multiple internal storage drives, Intel® Optane™. You must back up important files, data, photos, videos, etc. before use to avoid loss of data.
- ²¹ HP Manageability Integration Kit: Can be downloaded from <http://www8.hp.com/us/en/ads/en/ads/clientmanagement/overview.html>
- ²² Ivanti Management Suite: Subscription required.
- ²³ HP Client Security Suite Gen 4: Requires Windows and Intel® or AMD 8th generation processors.
- ²⁴ HP Password Manager: Requires Internet Explorer or Chrome or FireFox. Some websites and applications may not be supported. User may need to enable or allow the add-on / extension in the internet browser.
- ²⁵ Microsoft Defender: Opt in and internet connection required for updates.
- ²⁶ HP Sure Start Gen4: is available on HP Elite and HP Pro 600 products equipped with 8th generation Intel® or AMD processors.
- ²⁷ Firmware TPM: Is version 2.0. Hardware TPM is v1.2, which is a subset of the TPM 2.0 specification version v0.89 as implemented by Intel Platform Trust Technology (PTT).
- ²⁸ RAID configuration: Is optional and does require a second hard drive.
- ²⁹ HP Sure Run: Is available on HP Elite products equipped with 8th generation Intel® or AMD processors.
- ³⁰ Intel® Identity Protection Technology (Intel® IPT): Models configured with Intel® Core™ processors have the ability to utilize advanced security protection for online transactions. Intel® Identity Protection Technology (Intel® IPT), used in conjunction with participating web sites, provides double identity authentication by adding a hardware component in addition to the usual user name and password. Intel® Identity Protection Technology (Intel® IPT) is initialized through an HP Client Security module.
- ³¹ Sold separately or as an optional feature.
- ³² Intel® Turbo Boost technology requires a PC with a processor with Intel Turbo Boost capability. Intel Turbo Boost performance varies depending on hardware, software and overall system configuration. See www.intel.com/technology/turboboost for more information.
- ³³ Intel® Optane™ memory system acceleration does not replace or increase the DRAM in your system and requires configuration with an optional Intel® Core™ i(5 or 7)+ processor.
- ³⁴ Some functionality of vPro, such as Intel Active Management Technology and Intel Virtualization technology, requires additional 3rd party software in order to run. Availability of future "virtual appliances" applications for Intel vPro technology is dependant on 3rd party software providers. Compatibility with future "virtual appliances" is yet to be determined.

Sign up for updates
hp.com/go/getupdated

Learn more at
hp.com

© Copyright 2018 HP Development Company, L.P. The information contained herein is subject to change without notice. The only warranties for HP products and services are set forth in the express warranty statements accompanying such products and services. Nothing herein should be construed as constituting an additional warranty. HP shall not be liable for technical or editorial errors or omissions contained herein.

Intel, the Intel logo, Intel Core, Optane, vPro, Thunderbolt, and Core Inside are trademarks or registered trademarks of Intel Corporation or its subsidiaries in the United States and other countries. USB Type-C™ and USB-C™ are trademarks of USB Implementers Forum. Adobe PDF is a trademark of Adobe Systems Incorporated. DisplayPort™ and the DisplayPort™ logo are trademarks owned by the Video Electronics Standards Association (VESA®) in the United States and other countries. AMD and Radeon are trademarks of Advanced Micro Devices, Inc. ENERGY STAR is a registered trademark owned by the U.S. Environmental Protection Agency. All other trademarks are the property of their respective owners.

