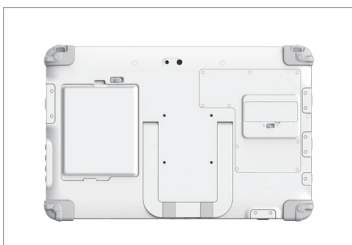




373T/MD RUGGED MEDICAL TABLET

Slim, Antimicrobial, ANSI/AAMI ES60601-1 Certified Tablet for Efficient Operations

The 373T/MD Rugged Medical Tablet features the integration of a brilliant 17" capacitive touch screen and a high performance, energy-efficient Intel® Pentium® Gold or Core™ i processor within a slim, durable package. With built-in front and back cameras, Wi-Fi as well as optional data capture modules, this medical tablet offers health professionals an effective tool to monitor, record and retrieve patient information. With its large, vivid display, the 373T/MD Rugged Medical Tablet shows a wide work area and detailed application interface to enhance user experience and workflow.



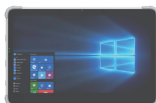
Features

- 17" Full-HD capacitive touch screen, digital pen support
- Intel® Pentium® Gold or Core™ i processor
- Microsoft® Windows® 10/11 IoT Enterprise or Ubuntu operating system
- NIST compliant BIOS available
- ANSI/AAMI ES60601-1 certified with antimicrobial enclosure
- IP65-rated front panel
- Hot-Swappable battery pack
- Built-in front and back cameras

Major Options

- Smart card/CAC reader
- 4G LTE/AWS

Specifications



Model	373T/MD
System	
CPU	Intel® Pentium® Gold 7505, Dual-Core, 3.5 GHz (max turbo frequency) Intel® Core™ i5-1135G7, Quad-Core, 4.2G Hz (max turbo frequency) Intel® Core™ i7-1165G7, Quad-Core, 4.7G Hz (max turbo frequency)
RAM	8GB to 16GB
Storage	256GB to 1TB Flash
Operating System	Microsoft® Windows® 10/11 IoT Enterprise or Ubuntu
NIST Compliance	NIST Compliant BIOS Available
Display	17" LED-Backlit Touchscreen
Display Resolution	1920 x 1080
Control Switch and Buttons	1 x Power Button, 3 x Programmable Buttons
Microphone	Built-In Microphone
Speaker	Built-In Speaker
Camera	Full-HD Front Camera & 8 MP Back Camera

Network Interface

WLAN	Wi-Fi 802.11ax, 2.4/5 GHz Dual Band
-------------	-------------------------------------

I/O Ports

USB Ports	6 x USB 3.0 x 6, 1 x USB Type C
Headset Jack	1 (3.5 mm)
Ethernet Port	1
DC-In	1

Mechanical and Environmental

AC/DC Adapter	Input: 100-240V AC; Output: 18.5V DC, 3.89A
Battery Pack	Hot-Swappable Battery (11.4V, 5400mAh)
Enclosure	ABS + PC Plastic and Magnesium-Aluminum Alloy with Antimicrobial Enclosure
Dimensions (H x W x D)	16.9 x 11.1 x 1.06 in/430 x 282 x 27 mm
Weight	4.41 lbs/2 kg
VESA-Compliant Mounting	75 x 75 mm VESA Standard
Durability	IP65-Rated Front Panel
Regulatory	FCC/IC, CE/CB, RCM, ANSI/AAMI ES60601-1
Temperature	Operation: -10°C to 60°C (-14°F to 140°F), Optional -30°C to 60°C (-22°F to 140°F) Storage: -55°C to 70°C (-67°F to 158°F)
Humidity	0% – 90% non-condensing

Major Options

Smart Card/CAC Reader	Full-Slot (Reads ISO 7816 T=0, T=1); 1.8/3/5V Smart Card
Mobile Broadband	4G LTE/AWS

*Specifications subject to change without notice.

Accessories

The 373T/MD Tablet has customized accessories to meet numerous deployment needs.

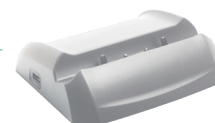
Digital Pen

Pen Tip	Diameter: 0.059 in/1.5 mm, Replaceable
Buttons	2 x Side Buttons (Right-Click & Eraser)
Battery	1 AAAA, Replaceable
Color	Black
Dimensions	Length: 5.5 in/140 mm (Pen Tip Included) Diameter: 0.38 in/9.7 mm
Weight	0.055 lbs/25 g



Desktop Charging Cradle

With I/O ports supporting power, Ethernet, HDMI, and USB



Wall/ Vehicle Mount Cradle

Secure Tablet mounting and charging with power, Ethernet pass-through, HDMI-out, COM, and USB ports



Battery Charging Kits



Battery Pack



3-Slot Battery Holder

