



FortiCam FE120B

QuickStart Guide



December 14, 2022

1st Edition

Copyright © 2022 Fortinet, Inc. All rights reserved. Fortinet®, FortiGate®, FortiCare® and FortiGuard®, and certain other marks are registered trademarks of Fortinet, Inc., and other Fortinet names herein may also be registered and/or common law trademarks of Fortinet. All other product or company names may be trademarks of their respective owners. Performance and other metrics contained herein were attained in internal lab tests under ideal conditions, and actual performance and other results may vary. Network variables, different network environments and other conditions may affect performance results. Nothing herein represents any binding commitment by Fortinet, and Fortinet disclaims all warranties, whether express or implied, except to the extent Fortinet enters a binding written contract, signed by Fortinet's General Counsel, with a purchaser that expressly warrants that the identified product will perform according to certain expressly-identified performance metrics and, in such event, only the specific performance metrics expressly identified in such binding written contract shall be binding on Fortinet. For absolute clarity, any such warranty will be limited to performance in the same ideal conditions as in Fortinet's internal lab tests. Fortinet disclaims in full any covenants, representations, and guarantees pursuant hereto, whether express or implied. Fortinet reserves the right to change, modify, transfer, or otherwise revise this publication without notice, and the most current version of the publication shall be applicable.

Technical Documentation

<http://docs.fortinet.com>

Knowledge Base

<http://kb.fortinet.com>

Forums

<https://forum.fortinet.com>

Customer Service & Support

<https://support.fortinet.com>

Training Services

<http://training.fortinet.com>

FortiGuard Threat Research & Response

<http://www.fortiguard.com>

Document Feedback

Email: techdocs@fortinet.com

For Product License Agreement/EULA and Warranty Terms, visit:

<https://www.fortinet.com/content/dam/fortinet/assets/legal/EULA.pdf>

Table of Contents

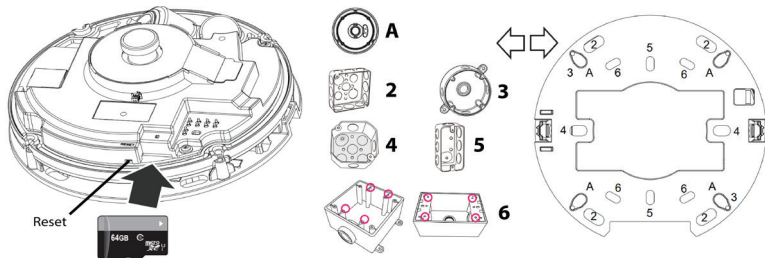
Package Contents	4
Hardware Overview	5
Hardware Installation	6
Camera Connection	12
Technical Specifications	13
Register for Support	15
Regulatory Notices	16
Cautions and Warnings	17

Package Contents

- 1x FortiCamera
- 1x torx screwdriver
- 1x alignment sticker
- 4x screws and 4x screw anchors
- 1x waterproof grommet and Ethernet connector push tip
- 1x replacement dry pack



Hardware Overview



The FortiCam FE120B supports a variety of junction boxes:

Junction Boxes	
A	Pendant cap FCM-FE120B-PCP
2	14-11/16 square gang box
3	4" square and round box
4	4" octagon box
5	1" single gang box
6	Cantex 3/4" type FSE 2 Gang

Hardware Installation

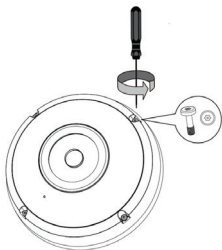
Caution: Adequate grounding must be provided to the unit and the PoE injector, in compliance with your local electrical code or regulations.

Note: Avoid exposure to direct sunlight for outdoor installation for better image quality and longer service life.

Important: Only remove the protective wrap from the camera lens when the entire installation process is completed to avoid damage.

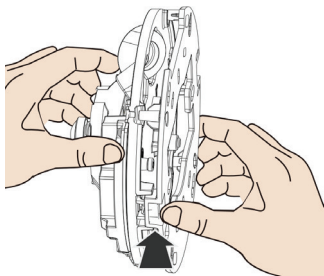
To install the camera

1. Loosen the four screws with the included torx screwdriver to remove the camera's cover.

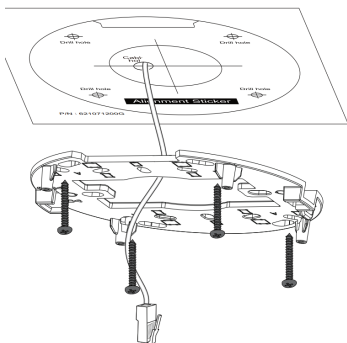


2. Position the alignment sticker on the desired mounting surface and drill holes for the four mounting screws and a hole for the cable.

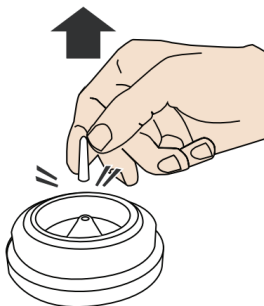
3. Press the tabs on the side of the camera to separate the camera from the mounting plate.



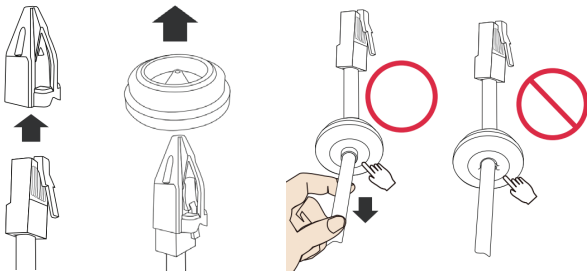
4. Mount the mounting plate using the included screws and plugs.



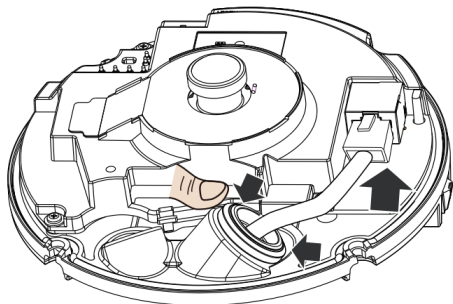
5. Open the small hole in the grommet by pulling off the center tip.



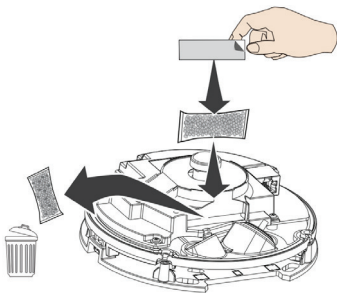
6. Remove the protective cap from the Ethernet cable and use the Ethernet connector push tip to push the Ethernet cable through the grommet, making sure the grommet membrane is folded outwards.



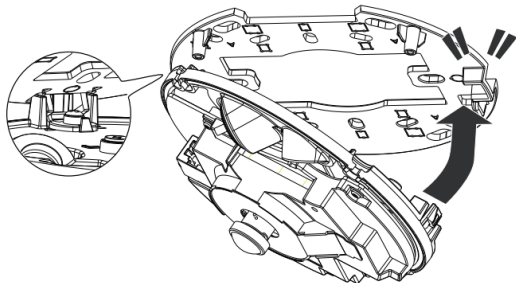
7. Fit the grommet tightly into the camera body and connect the network cable.



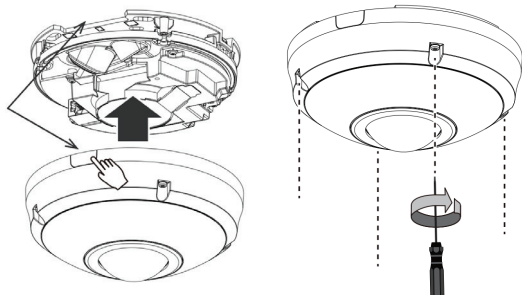
8. Replace the desiccant bag.



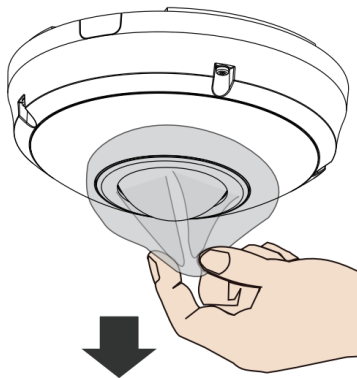
9. Snap the camera onto the mounting plate.



10. Attach the camera's cover and then fasten with the four provided screws.



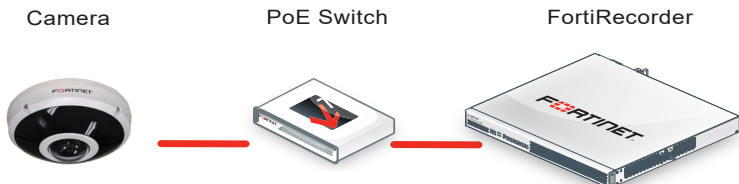
11. Remove the protective covering from the lens after installation.



For more mounting options, such as pendant cap mounting for the FCM-FE120B-PCP, see the FE120B Mounting Guide.

Camera Connection

Caution: This device complies with IEEE 802.3at PoE specification. Do not use any PoE injectors that are not IEEE 802.3at compliant as they may damage your device.



To connect the camera

1. Connect the camera's Ethernet port to the FortiRecorder NVR via a PoE switch. The camera gets its IP address from the DHCP server automatically.
2. Go to the FortiRecorder web UI to configure the discovered camera. For details, see the FortiRecorder Administration Guide on <http://docs.fortinet.com>.

To reset the camera to factory default

1. Remove the camera cover.
2. Press and hold the Reset button for more than 5 seconds.

Note: The camera's default IP address is 192.168.1.245.

Technical Specifications

Camera	
Format	Fisheye, Indoor/Outdoor, Vandal
Sensor Type	12 Megapixel, 1/2.3" Progressive CMOS
Iris	F2.0, Fixed
Focal Length	f = 1.22mm
View Angle	Ceiling Mount: 360°; Wall Mount: 180°; Table Mount: 360°
Minimum Illumination	0.01 Lux (Color)@F1.4, 0.005 Lux (B/W)@F2
Wide Dynamic Range	Shutter WDR (>120dB)
Network Interface	RJ-45 Ethernet 10/100/1000Mbps
IRLED/IRC	20+m/Yes
EIS/DNR	-/3DNR
Streaming Protocol	RTSP
SD Card	Micro SD/SDHC/SDXC, up to 512G/1TB (not included)
Audio	One-way, built-in microphone
Video Compression	H.264/H.265 (HEVC)

Image Resolution	30fps @ 2944x2944 (WDR off) 20fps @ 2944x2944 (WDR on) 1920x1920 1024x1024 Local dewarp: Wall 30fps@ 2048x768 1280x480 Ceiling/table 30fps@ 2944x736 1920x480
Mounting	Wall, Ceiling, Table, Pole, Drop tube, Junction box
Dimensions	
Height x Width x Length	2.7 x 5.9 x 5.9" (68 x 150 x 150 mm)
Weight	1.55lb (701g)
Environment	
Power Required	PoE (802.3at) Class 4
Power Consumption (AVG)	9.55 W, 22.5 W max (with IR on)
Operating Temperature	Starting: -4°F ~ 122°F (-20°C ~ 50°C) Working IR OFF: -40°F ~ 131°F (-40°C ~ 55°C) Working IR ON: -40°F ~ 122°F (-40°C ~ 50°C)
Humidity	0-90% Non-condensing
Compliance	
FCC Part 15B Class A, ICES-003 Class A, CE (EN 55032 Class A, EN 55035), CB (IEC/EN 62368-1, IEC/EN 60950-22), IP66, IK10, ONVIF Profile G, S, T	

Register for Support

Register your Fortinet product to receive:

- Technical support • New product features • Protection from new threats

Vous devez enregistrer le produit pour recevoir:

- Support technique • Nouvelles fonctionnalités du produit • Protection contre de nouvelles menaces

La registrazione ti permette di usufruire di:

- Supporto tecnico • Nuove funzionalità • Protezione dalle ultime minacce

Debe registrar el producto para recibir:

- Apoyo técnico • Nuevas funcionalidades del producto • Protección contra ataques

下記フォーティネットからのサービスを受けるために、ご購入製品の登録が必要です:

- テクニカルサポート • 新機能の追加 • 新しい脅威への防御

注册您的飞塔产品后可以得到:

- 技术支持 • 新产品特点信息 • 最新威胁防护

Web: <https://support.fortinet.com/>

Toll free: 1 866 648 4638

Phone: 1 408 486 7899

Fax: 1 408 235 7737

Email: register@fortinet.com

Regulatory Notices

Federal Communication Commission (FCC) – USA

This device complies with Part 15 of FCC Rules. Operation is subject to the following two conditions:

- (1) this device may not cause harmful interference, and
- (2) this device must accept any interference received; including interference that may cause undesired operation.

This equipment has been tested and found to comply with the limits for a Class A digital device, pursuant to Part 15 of the FCC Rules. These limits are designed to provide reasonable protection against harmful interference when the equipment is operated in a commercial environment. This equipment generates, uses, and can radiate radio frequency energy, and if it is not installed and used in accordance with the instruction manual, it may cause harmful interference to radio communications. Operation of this equipment in a residential area is likely to cause harmful interference, in which case the user will be required to correct the interference at his own expense.

WARNING: Any changes or modifications to this product not expressly approved by the party responsible for compliance could void the user's authority to operate the equipment

Industry Canada Equipment Standard for Digital Equipment (ICES) – Canada

CAN ICES-003 (A) / NMB-003 (A)

This digital apparatus does not exceed the Class A limits for radio noise emissions from digital apparatus set out in the Radio Interference Regulations of the Canadian Department of Communications.

Cet appareil numérique n'émet pas de bruits radioélectriques dépassant les limites applicables aux appareils numériques de la classe A prescrites dans le Règlement sur le brouillage radioélectrique édicté par le ministère des Communications du Canada.

European Conformity (CE) - EU

This is a Class A product. In a domestic environment, this product may cause radio interference, in which case the user may be required to take adequate measures.



Cautions and Warnings

Environmental Specifications

Refer to specific Product Model Data Sheet for Environmental Specifications (Operating Temperature, Storage Temperature, Humidity, and Altitude).

Référez à la Fiche Technique de ce produit pour les caractéristiques environnementales (Température de fonctionnement, température de stockage, humidité et l'altitude).

Safety

Caution: This equipment is to be used in a Network Environment 0 per IECTR 62101. This product is connected only to PoE networks without routing to the outside plant.

Attention: Ce matériel doit être utilisé dans un Environnement Réseau 0 par IECTR 62101. Ce produit est uniquement connecté aux réseaux PoE sans installation externe de routage.

This product is intended to be supplied by a Listed Direct Plug-In Power Unit marked LPS or Class 2 and rated 12 Vdc, 1.75 A or by 37-57 Vdc from PoE source.

Le produit doit être alimenté par un bloc d'alimentation à courant continu homologué UL de 12 Vdc, 1.75 A nominal marqué LPS ou Class 2 ou par une source d'alimentation par Ethernet de 37-57 Vdc (PoE).

The connecting cable between the outdoor equipment and the indoor ITE devices should comply with Class 3 wiring methods as listed in NEC, Table 725.154(G) for Class 3 Cable Substitutions.

Le câble connectant l'équipement extérieur et ceux d'intérieur de type ITE doit être conforme avec les méthodes de câblage de classe 3 tel que listé dans le standard NEC, Table 725.154(G) pour les câbles de substitutions de classe 3.

PoE input cable type should be CL3, CL3P, CL3R, CL3X, marked "SUNLIGHT RESISTANT", "SUN. RES.", or "SR" and "water resistant" or "W".

Le type de câble PoE d'entrée doit être CL3, CL3P, CL3R, CL3X marqué "SUNLIGHT RESISTANT", "SUN RES.», Ou «SR», et "waterproof" ou "W".

Note: Avoid direct sunlight for outdoor installations for better image quality and longer service life.

