

HP Color LaserJet CP1215 Printer (CC376A)

Technical specifications

Print speed (A4 and letter)¹	Black: up to 12 ppm, colour: up to 8 ppm
Document delivery speed	First-page-out: black: as fast as 24 seconds from Ready mode, colour: as fast as 30 seconds from Ready mode Time to completion: as fast as 52 seconds
Resolution	Up to 600 x 600 dpi; HP ImageREt 2400, HP ColorSphere toner, HP edge-enhancement technologies
Processor	264 MHz
Memory	16 MB
Recommended monthly volume²	250 to 1,000 pages
Maximum monthly duty cycle³	Up to 25,000 pages
Paper	
Input	150-sheet input tray
Output	125-sheet output bin
Two-sided printing	Manual (driver support provided)
Sizes	A4, A5, B5 (ISO, JIS), letter, legal, executive, 76 x 127 mm (3 x 5 in) to 216 x 356 mm (8.5 x 14 in), envelopes (No. 10, Monarch)
Weights	60 to 176 g/m ² (up to 200 g/m ² with HP Laser Cover papers, up to 220 g/m ² with HP Color Laser Glossy Photo papers); 16 to 47 lb (up to 53 lb with HP Laser Cover papers, up to 59 lb with HP Laser Glossy Photo papers)
Types	Paper (bond, brochure, color, glossy, letterhead, photo, plain, preprinted, prepunched, recycled, rough), transparencies, labels, envelopes, cardstock
Connectivity	
Interfaces	Hi-Speed USB 2.0 port
Languages	Host-based
Operating systems	Microsoft® Windows 2000, Windows XP® Home, Windows XP Professional, Windows Server 2003, Certified for Windows Vista®
Dimensions (w x d x h)	399 x 453 x 254 mm (15.7 x 17.8 x 10 in)
Weight (without print cartridge)	17.6 kg (38.9 lb)
What's in the box	HP Color LaserJet CP1215 Printer, power cable, CD (includes User's Guide and printer software), Getting Started Guide, output tray extension, HP Color LaserJet Introductory Cyan, Magenta, Yellow, and Black print cartridges with HP ColorSphere toner, ⁴ USB Printer to PC cable ⁵
Warranty	One-year, return to authorised service centre, limited warranty
Environmental ranges	
Temperature	Recommended: 20 to 27 degrees C (68 to 81 degrees F); Storage: -20 to 40 degrees C (-4 to 104 degrees F)
Relative humidity	Recommended: 20 to 70 percent; Storage: 10 to 95 percent
Altitude	Up to 3,048 m (up to 10,000 ft)
Acoustics	
Sound power ⁶	Maximum: 6.2 B(A) Ready: Inaudible
Bystander sound pressure	Active: ⁷ 47 dB(A) Ready: Inaudible
Power specifications	
Required input voltage	110 to 127 V (±10 percent), 60 Hz (±3 Hz); 220 to 240 V (±10 percent), 50 Hz (±3 Hz)
Power consumption ⁸	Active: 290 watts Sleep: 4.4 watts Ready: 11.1 watts Off: 0 watts
Typical Electricity Consumption	1.27 kWh/Week
Certifications	
Safety	IEC 60950-1 (International), EN 60950-1+A11 (EU), IEC 60825-1+A1+A2, UL/cUL Listed (US/Canada), GS license (Europe), EN 60825-1+A1+A2 (Class 1 Laser/LED Device) GB4943-2001, Low Voltage Directive 2006/95/EC with CE Marking (Europe); other safety approvals as required by individual countries
EMC	CISPR 22: 2005/EN 55022: 2006 Class B, EN 61000-3-2: 2000+A2, EN 61000-3-3: 1995+A1, EN 55024: 1998+A1+A2, FCC Title 47 CFR, Part 15 Class B (USA), ICES-003, Issue 4, (Canada), GB9254-1998, EMC Directive 2004/108/EC with CE Marking (Europe), other EMC approvals as required by individual countries

ENERGY STAR® qualified models, see www.hp.com/go/energystar
HP SureSupply enabled. To learn more, visit www.hp.com/suresupply

¹ Exact speed varies depending on system configuration, software application, driver, and document complexity.

² HP recommends that the number of printed pages per month be within the stated range for optimum device performance, based on factors including supplies replacement intervals and device life over an extended warranty period.

³ Duty cycle is defined as the maximum number of pages per month of imaged output. This value provides a comparison of product robustness in relation to other HP LaserJet or HP Color LaserJet devices, and enables appropriate deployment of printers and MFPs to satisfy the demands of connected individuals or groups.

⁴ Includes introductory print cartridges. (Average continuous composite cyan/yellow/magenta cartridge yield 750 pages and average continuous black cartridge yield 750 pages.) For more information, visit www.hp.com/go/learnaboutsupplies.

⁵ Included in Asia-Pacific only.

⁶ Configuration tested: simplex printing, A4 paper at an average of 12 ppm. Values are subject to change. For current information, see www.hp.com/support.

⁷ While printing in colour.

⁸ Values subject to change. See www.hp.com/support for current information. Power numbers are the highest values measured using all standard voltages.

For more information, call your local Hewlett-Packard sales office or your nearest HP authorised dealer or visit us at www.hp.com

HP Customer Information Centre (for product information)

Australia	13 23 47
China	800 820 2255
Hong Kong	800 938 833
India	1600 425 4999 (from MTNL/BSNL LAN line) 3030 4499 (from mobile)
Indonesia	0800 1111 222
Korea	080 703 0700
Malaysia	1800 88 4848
New Zealand	0800 733 547
Philippines	1800 1441 6688
Singapore	1800 278 8100
Taiwan	0800 236 686
Thailand	+662 353 9000
Vietnam	+848 930 2814

For the following countries, please fax your queries to: +65 6275 6707

Bangladesh, Bhutan, Brunei, Cambodia, Maldives, Nepal, Pakistan, Sri Lanka

HP Customer Care Centre (for post-sales service)

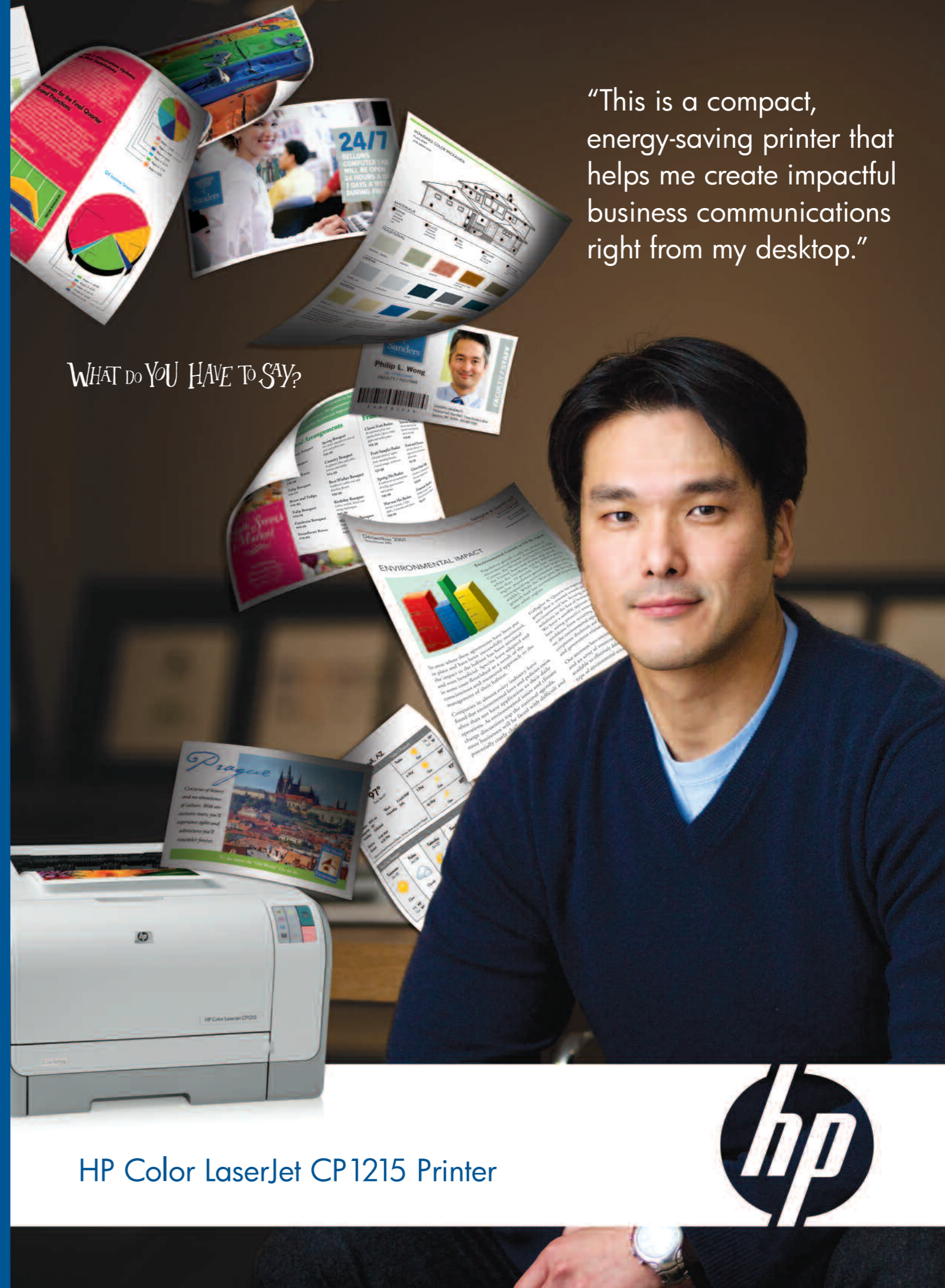
Australia	13 10 47
China	800 810 3888
Hong Kong	+852 3002 8555
India	1600 112 267
Indonesia	+62 21 350 3408
Korea	+82 23270 0700
Malaysia	1800 805 405
New Zealand	0800 449 553
Philippines	+63 2 867 3551
Singapore	+65 6 272 5300
Taiwan	+886 2 8722 8000
Thailand	+662 353 9000
Vietnam	+848 823 4530



ENERGY STAR and the ENERGY STAR mark are U.S. registered marks. Microsoft, Windows, and Windows XP are U.S. registered trademarks of Microsoft Corporation. Windows Vista is either a registered trademark or trademark of Microsoft Corporation in the United States and/or other countries.

© Copyright 2008 Hewlett-Packard Development Company, L.P. The information contained herein is subject to change without notice. The only warranties for HP products and services are set forth in the express warranty statements accompanying such products and services. Nothing herein should be construed as constituting an additional warranty. HP shall not be liable for technical or editorial errors or omissions contained herein.

Printed in Singapore, 20080007-EFP, March 2008



"This is a compact, energy-saving printer that helps me create impactful business communications right from my desktop."

WHAT DO YOU HAVE TO SAY?

HP Color LaserJet CP1215 Printer



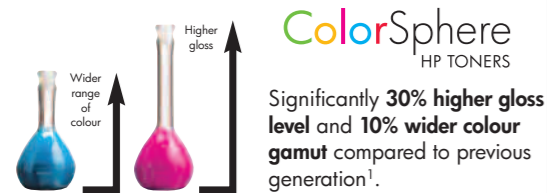
Compactly-designed and packed with innovative print technologies, the HP Color LaserJet CP1215 Printer is HP's most affordable colour laser printer that delivers brilliant results.

Achieve high quality colour laser printing with the new generation HP ColorSphere toner, HP ImageREt 2400 and HP specialty papers. Together, they enable high-impact business communications to be created in-house. What's more, it is designed to be energy-efficient while delivering professional results right from the desktop.

Compact design, smart features

Superior print quality

New generation HP ColorSphere toner



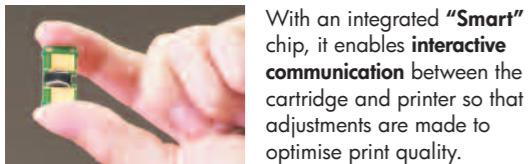
HP ImageREt 2400



Water and fade resistant



Intelligence in the print cartridge



User-friendly features



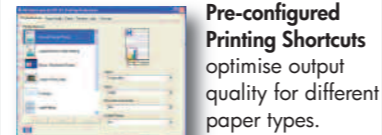
Space-saving design

Its logical and thoughtful design not only makes it **easy to set up, use and maintain**, it also **saves precious desktop and work space** too.

Energy efficiency



Simple task-based user interface (UI)



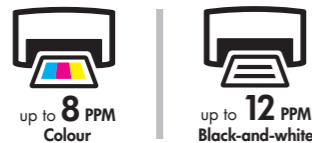
Designed to deliver print productivity

Instant-on technology



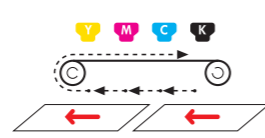
With Instant-on technology², the **Time To Completion (TTC)**³ of a typical office print job is as fast as **52 seconds** from low power mode.

Fast print speeds



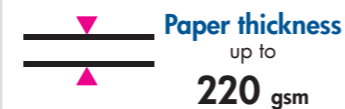
Print up to **8 pages per minute (ppm)** colour and **12 ppm** black-and-white.

In-line printing technology



4 colours in one pass delivers **faster and smoother printing** while minimising paper jams.

Handles broad range of paper



Superior print quality for impressive documents in-house

Consistently vibrant images and sharp text from page to page, cartridge to cartridge

30% higher gloss levels for more vibrant and realistic images.

10% wider colour gamut for truer flesh tones, shadows details and smoother gradations.

Faster printing without compromising image quality.

Shake-free cartridge design distributes liquid-like toner evenly for smoother print quality.

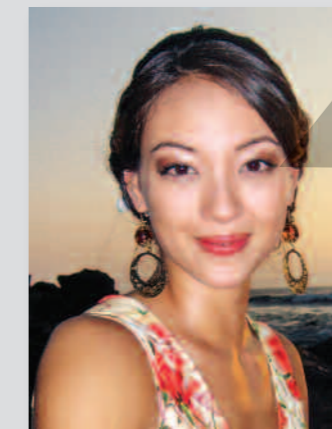
Professional colour for true-to-life photos and images even on plain paper.

Every toner particle has a **wax core** that fuses to the paper at printer speeds, ensuring sharp images and crisp text.

Spherically-shaped toner particles vs **Conventional toner particles**

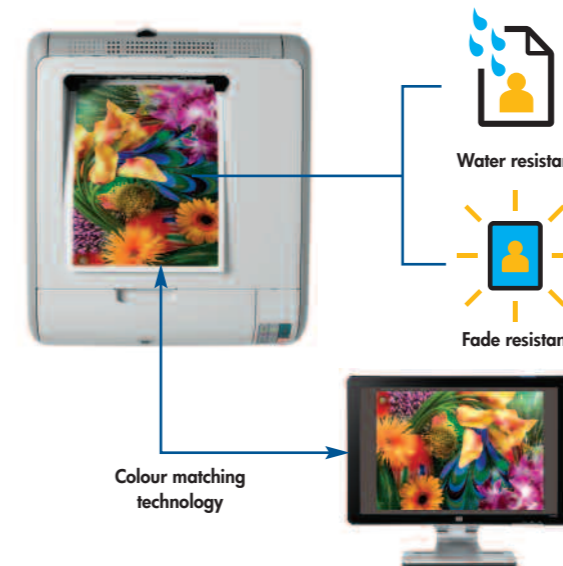
New generation HP ColorSphere toner increased dynamic range of colours and gloss levels to deliver professional image quality – vibrant graphics, sharp text and realistic photo-quality images.

Innovative print technologies for best results



HP ImageREt 2400 delivers great colour out of the box using a multi-level printing process to control colour by combining up to four colours in a single dot. By varying the amount of toner in each pixel, over 100,000 different colours can be created in a single 600 dpi pixel. Combined with high-resolution halftoning, HP ImageREt multi-level technology creates millions of smooth colours, sharp images and crisp text to provide the best colour print quality.

Consistent printouts that last



Water and fade resistant printouts that are smudge-free and can last up to 15 years.

Colour matching technology adjusts printed colours to the colours displayed on the monitor screen.

¹ Comparing the HP Color LaserJet 1515 with the HP Color LaserJet 2505 on HP Color Laser Glossy Brochure Paper glossy media 160/gm (Q6611A).

² Instant-on technology uses cutting-edge fuser technology to produce the first page faster when a printer is coming out of low power mode so the print job is done sooner.

³ An InfoTrends study shows the typical office print job is three to five pages long: www.infotrends.com/public/Content/Presentations/officeprinteruse.pdf. See HP average print time versus competition: www.hp.com/go/whywait.

Compact design, smart features

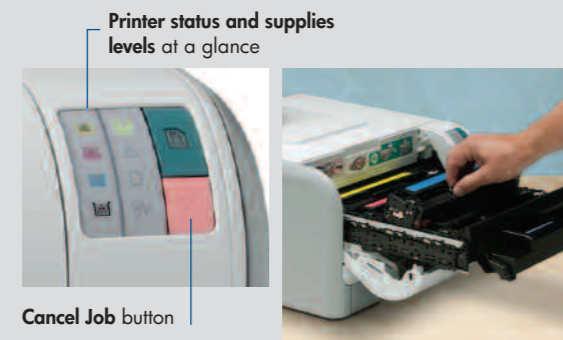
Space-saving design conserves office space

Small footprint fits neatly on any desktop



Compact and functional design helps make the most of any work space without compromising on print quality. And because sound can be as intrusive as size, the printer is specially designed for exceptionally quiet operation.

User-friendly features for ease of use

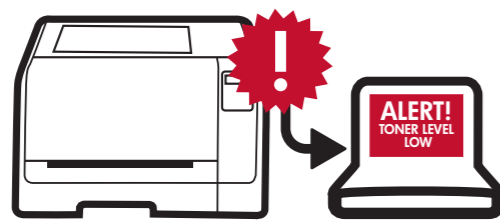


Printer status and supplies levels at a glance

Cancel Job button

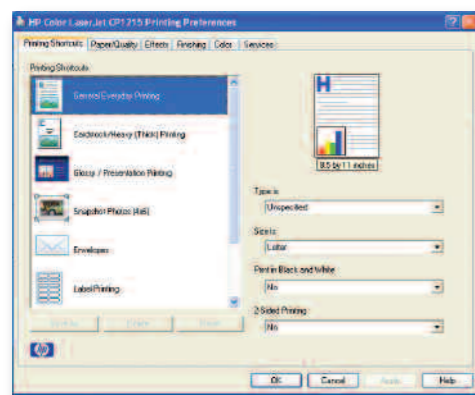
Intuitive control panel provides instant printer and supplies information, making it convenient to manage. The control panel also includes a **Cancel Job** button and **Menu** controls for easy printer interaction. **Front-door design** makes it easy to maintain and replace cartridges.

Best user experience with hassle-free printing



HP Smart printing technology enables interactive communication between cartridge and printer to optimise output quality, monitor print jobs and supplies levels. This proprietary HP technology enhances office productivity and user printing experience.

Effortless printing with a simple click



Simple, task-based User Interface (UI) optimises output for each of the many supported paper types. Simply select from a range of pre-configured Printing Shortcuts – including settings for general everyday printing, envelopes, cardstock, glossy paper and more.

Energy efficiency in a small package



Energy-saving feature automatically reduces power consumption after a designated period of inactivity and requires only 6.2 watts in low power mode with typical electricity consumption at 1.27 kWh per week.

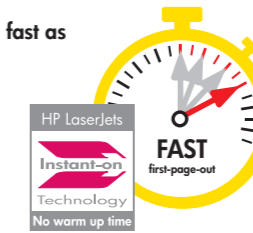
Designed to deliver print productivity

Fast printing saves time and energy

Time To Completion (TTC)¹ as fast as

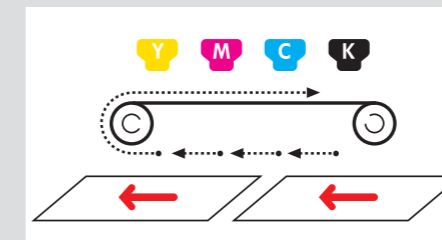
52 seconds

from low power mode



Instant-on technology² helps to start and finish print jobs faster. The Time To Completion (TTC)¹ of a typical office print job is 2 times faster from low power mode on printers with Instant-on technology. Plus, Instant-on technology provides up to 50% energy savings over traditional fusing while completing a print job in a shorter time.

Efficient printing system improves print performance

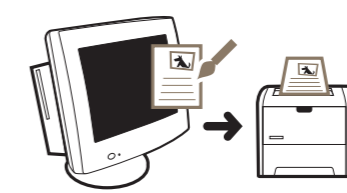


In-line printing technology: 4 colour printing in one pass

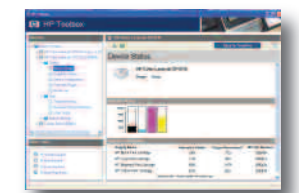
In-line printing technology delivers smoother and faster printouts as four individual cartridges are aligned in fixed positions to apply toner directly to paper in one single pass. This print technology ensures superior print quality, less paper jams and exceptionally quiet operation.



Print economically in black-and-white. Print black-only pages for the same costs as on an HP black-and-white LaserJet³. In addition, four introductory 750-page print cartridges are preinstalled in the printer.⁴



Printer's host-based driver enables businesses to use the processing power and memory of the host PC rather than the printer's for better performance.



HP Toolbox helps effectively manage and maintain printers with remote access to printer settings, status information, user's guide, self-help and troubleshooting tips when the printer is directly connected to the computer or the network.

Proven HP LaserJet quality and reliability



Renowned HP LaserJet for quality and reliability. Awarded by PC Magazine's Service and Reliability Survey (18 September 2007) with an "A" rating for 16 years running.⁵



Reliable HP support ensures all HP LaserJets are backed by a one-year limited warranty, 24/7 online support at www.hp.com/support, and easy-to-access phone support.

HP – chosen by consumers as the world's most reliable printer brand.

¹ An InfoTrends study shows the typical office print job is three to five pages long: www.infotrends.com/public/Content/Presentations/officeprinteruse.pdf. See HP average print time versus competition: www.hp.com/go/whywait.

² Instant-on technology uses cutting-edge fuser technology to produce the first page faster when a printer is coming out of low power mode so the print job is done sooner.

³ Compared to HP LaserJet P1505 printer (single function) and LaserJet M1522 MFP/M1120 MFP. Assuming customer is printing at least 30% of total pages in colour with content similar to the colour ISO/IEC 19798 test suite (www.iso.org/jtc1/sc28) and overall average job length of three pages. Yields established using ISO/IEC test standards. Actual yields and costs vary considerably depending on images printed, number of colour pages printed and other factors.

⁴ Includes introductory print cartridges. (Average continuous composite cyan/yellow/magenta cartridge yield 750 pages and average continuous black cartridge yield 750 pages.) For more information, visit www.hp.com/go/learnaboutsupplies.

⁵ PC Magazine Readers' Choice Award Logo is a trademark of Ziff Davis Publishing Holdings Inc. Used under license.

HP's commitment for a safer environment

With HP's Design for the Environment initiative, products are designed with their entire life cycle in mind – from product design to manufacturing, and from usage to recycling – in an effort to reduce energy, paper, packaging and materials used. By providing customers with safe, high quality products that are environmentally-sound throughout their life cycle, HP aims to reduce the environmental impact of our products, and that of our customers.

1 DESIGN FOR ENVIRONMENT



Conserve energy with ENERGY STAR®. The printer automatically reduces power consumption after a designated period of inactivity.



Lower power consumption with Instant-on technology. It provides up to 50% energy savings over traditional fusing while providing a fast first-page-out in seconds. Instant-on technology has reduced CO₂ emissions by 5.25 million tons, to date, equivalent to removing 1.1 million cars from the road for one year.¹

5 RECYCLE

Designed for recycling. HP printers uses common fasteners and snap-in features, avoiding the need for adhesives or welds. To date, HP has recycled 454 million cumulative kilograms of HP products around the world through HP Planet Partners Program.



4 RETURN

Simplify the management and disposal of products. Through HP Planet Partners – a free, convenient return and recycling program available in more than 40 countries. All returned Original HP print cartridges go through a multiphase recycling process where they are reduced to raw materials that are used to make new metal and plastic products.²

¹ The tons of CO₂ avoided is based on power plant emissions that otherwise would occur to generate the electricity saved; cars removed is based on annual emissions from cars burning gasoline.

² Program availability varies. HP printing supplies return and recycling is currently available in more than 40 countries, territories, and regions in Asia, Europe, and North and South America through the HP Planet Partners program.

2 MANUFACTURING

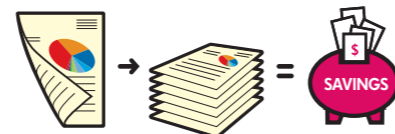
Use of fewer materials. HP LaserJet toner cartridge packaging uses 45% less materials compared to previous designs. The more compact package contains an innovative multi-chamber air bag that protects the cartridge from transport damage, dust, moisture and light. 30% more cartridges can be shipped on one pallet (1500 more cartridges can ship in one ocean container).



3 USE

No more wasteful prints. Save paper with HP Smart Web Printing (a free download for users). It enables simple, predictable web printing and provides control over what you want and how you want it printed. You can select, store and organise text and graphics from multiple web pages, then edit and print exactly what you see on-screen, thereby making web printing more eco-friendly and less wasteful.

Consume less paper. By printing on both sides with manual two-sided printing. Plus, easily produce 2-up and 4-up copies (multiple pages on a single sheet of paper) to conserve resources.



HP Color LaserJet CP1215 Printer

Walk-around

16 MB of printing memory and a powerful **264 MHz processor** perform complex tasks quickly

Ultra-compact, visually appealing design fits almost anywhere

125-sheet output bin

One-door access for easy cartridge installation

Simplified control panel with 9 LED indicators

Rear view



Hi-Speed USB 2.0 port for simple connectivity



150-sheet multipurpose input tray

ColorSphere
HP TONERS

Ordering information

Product
HP Color LaserJet CP1215 Printer CC376A

Replacement print cartridges with HP ColorSphere toner¹
HP Color LaserJet Black Print Cartridge CB540A
HP Color LaserJet Cyan Print Cartridge CB541A
HP Color LaserJet Yellow Print Cartridge CB542A
HP Color LaserJet Magenta Print Cartridge CB543A

Connectivity
Hi-Speed USB A to B printer cable (2-meter) Q6264A
HP USB Network Print Adapter Q6275A

Service and Support
HP 3-year Return to Depot HC123E
HP 1-year Return to Depot HC124PE
HP 3-year Next Business Day Exchange UC733E
HP 1-year Next Business Day Exchange UC739PE
HP Network Installation Service H3110E
HP Physical Installation Service H4513E

Paper
Asia Pacific: www.hp.com/apac/printingsupplies
Asia: 65-6253-8500,
Australia/New Zealand: 61-2997-2299LAR

Solutions
www.hp.com/go/gsc

¹ Includes introductory print cartridges. (Average continuous composite cyan/yellow/magenta cartridge yield 750 pages and average continuous black cartridge yield 750 pages.) Refresh your printing system with Original HP CB540A-43A replacement print cartridges. (Average continuous composite cyan/yellow/magenta cartridge yield 1,400 standard pages and average continuous black cartridge yield 2,200 standard pages.) Declared yield values for replacement cartridges in accordance with ISO/IEC 19798. Actual yields vary considerably based on images printed and other factors. For more information, visit www.hp.com/go/learnaboutsupplies.

Get the most out of your printer with HP accessories, supplies and services

Purchasing an HP Color LaserJet printer is a business investment that improves print productivity, both internal and external business communications. Designed to work optimally with HP Color LaserJet printers, HP accessories deliver faster print speeds, lower paper cost and increased print efficiency – improving the bottom line.



Get everything you need to print with the HP USB Network Print Adapter (Q6275A)



Connect directly with the Hi-Speed USB A to B Printer Cable (Q6264A)



HP's all-in-one print cartridges and toner are specifically designed with the printer to deliver consistent quality and reliable, trouble-free printing



Choose from a selection of HP papers to create impressive marketing materials in-house