



Maintain maximum productivity,
while printing exceptional color

HP Color LaserJet Enterprise M856 series



"HP product lines
stand out above the rest"¹



Exceptional color
performance



Minimal interruptions.
Maximum productivity.



The world's most
secure printing²

Exceptional color performance



Expect premium marketing materials and professional-quality documents with vivid color images and graphics that stand out. The HP Color LaserJet Enterprise M856 series is built for great color performance with an enhanced print mode and a toner formula designed for consistent quality and brilliant color output.



Brilliant, durable color prints

Look professional on every page with vibrant, high-quality color prints that stand the test of time. Produce full-bleed A3 marketing materials by printing on SRA3 paper and trimming down to size.

Print premium, professional-quality documents with vivid color images and graphics that stand out. Enhanced print mode is a special print mode that allows for a wider range of colors and an extra level of vividness and gloss for important documents, brochures, and marketing materials.



Consistent quality toner

Create consistent quality and the performance you count on with Original HP Toner cartridges and drums with JetIntelligence, specially designed and precisely engineered for HP printers and MFPs.

Count on consistently vibrant, professional-quality results. Specially formulated HP ColorSphere 3 toner is precisely tuned to match the powerful performance of your HP printer. Get the most from your cartridge with page maximizer technology that manages efficient toner use and cartridge performance.



Ready to work, right away

Speed through print jobs right out of the box. This device ships with preinstalled Original HP Color LaserJet Toner cartridges and drums with JetIntelligence. Auto seal removal enables simple and seamless installation of cartridge replacements, so you can get back to business fast—without costly delays or frustrating messes.

Minimal interruptions. Maximum uptime.

Annoying interruptions and complex maintenance can slow down printing and, ultimately, the pace of business. Avoid pauses in productivity with an HP Color LaserJet printer designed for maximum uptime—so you can count on reliable results day in and day out.

Move business forward

Grab the documents you need and go. This device wakes up quickly and prints fast—with a first page out from ready as fast as 5.9 seconds³ and print speeds up to 55 pages per minute (ppm)⁴—your pages are ready right when you need them. Walk up and print from a memory device using the easy-access USB port.⁵



Keep the pace of business moving with easy-to-replace, long-life supplies. Change the toner and drum in seconds—both are easily accessible and come pre-installed in the printer. And this HP Color LaserJet printer is designed with minimal parts for simple service and maximum productivity.

Stay connected

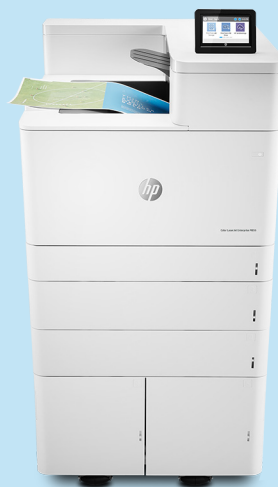
Easily print and share resources with built-in Ethernet and dual-band Wi-Fi® and Wi-Fi Direct printing (standard on the M856x model).⁶ Both M856 series printers can add the optional NFC touch-to-print.⁷



The world is your office. Submit while on the go and release at any of your HP Roam-enabled office printers—simply and securely with HP Roam for Business.⁸ Your mobile device will automatically discover nearby HP Roam-enabled printers.

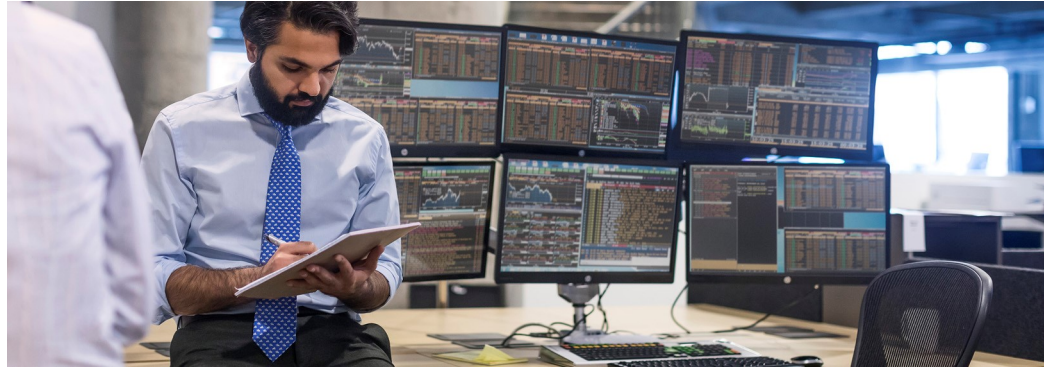
Expand your capacity

Tailor this printer to the needs of your business with a wide range of optional paper-handling accessories. Most optional trays support media sizes up to 11 x 17 inches (A3).



Print up to 4,450 pages without reloading paper, using the optional 2,700-sheet high-capacity input (HCI) tray and two optional 550-sheet paper trays.⁹ Or choose the optional stand to store paper and supplies.

The world's most secure printing²



HP printers have the industry's strongest security² because they're always on guard, continually detecting and stopping threats while adapting to new ones. And only HP printers automatically self-heal from attacks, so IT doesn't need to intervene.



Always on guard

Only HP Enterprise devices offer built-in security features that are always on guard.²

- With HP Sure Start, each device regularly checks its operating code and repairs itself from attempted hacks.
- Whitelisting checks firmware during startup to help ensure it's authentic, good code—digitally signed by HP.
- Run-time intrusion detection continually monitors activity to detect and stop attacks, then automatically reboots.
- HP Connection Inspector inspects outgoing network connections to stop suspicious requests like malware.

Thwart potential attacks by receiving instant notification of security issues, so immediate action can be taken. This device works with tools like Splunk, ArcSight, McAfee, and SIEMonster.

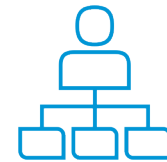


Take security to the next level

Help protect your printer with more than 200 embedded security features.¹⁰ Protect information in transit over the network and stored on the device—keys, passwords, certificates, and more. Store data on the optional 256-bit encrypted HP High-Performance Secure Hard Disk.¹¹

Easily deploy and integrate HP and third-party solutions with the HP Open Extensibility Platform (OXP). Enter a PIN or password at the device to retrieve your print job and add features such as optional proximity card readers and more through the Hardware Integration Pocket (HIP).¹²

Further safeguard data stored on the device, using the standard HP Trusted Platform Module.



Build business efficiency

Centralize control of your printing environment with HP Web Jetadmin—and help build business efficiency.¹³ Optional HP JetAdvantage Security Manager offers an effective, policy-based approach to help secure HP printing and imaging devices.¹⁴ Easily set security configuration policies and automatically validate settings for every HP printer and MFP in your fleet.

HP JetAdvantage Secure Print¹⁵ and HP Access Control (HPAC) help secure documents by requiring authentication to release print jobs. In addition, extend capabilities and easily customize with HPAC—integrate job accounting, manage rights, and establish quotas for things such as color use.¹⁶ Save IT time and make printing easy for the entire enterprise by using a single driver for all HP devices.¹⁷

▶ For more information:

Fleet management

HP Web Jetadmin visit: hp.com/go/wia

Solution brief: <http://h20195.www2.hp.com/v2/GetPDF.aspx/4aa5-2718enw.pdf>

Video: <http://hp.brightcovegallery.com/solutions/detail/video/4271055504001/>

HP Universal Print Driver visit: hp.com/go/upd

Solution brief: <http://h20195.www2.hp.com/v2/GetPDF.aspx/4aa2-4781enw.pdf>

Security

HP JetAdvantage Security Solutions visit: hp.com/go/printsecurity

Solution brief: <http://h20195.www2.hp.com/v2/GetPDF.aspx/4aa3-1295enw.pdf>

Video: <http://hp.brightcovegallery.com/products/detail/video/4270905124001/>

HP JetAdvantage Security Manager visit: hp.com/go/securitymanager

Brochure: <http://h20195.www2.hp.com/v2/GetPDF.aspx/4aa3-9275enw.pdf>

Video: <http://hp.brightcovegallery.com/products/detail/video/4270837770001/>

Built with the environment in mind



Support your business' environmental initiatives with a printer designed to use energy efficiently. Save up to 78% over already energy-saving predecessor devices.¹⁸ Take advantage of reduced printing costs while helping to increase sustainability.



Help with air quality compliance

HP voluntarily designs and tests its printing systems—HP printer, paper, and toner cartridges—to prevent emissions that exceed eco-label (or Blue Angel, EPEAT®, or relevant indoor air quality) guidelines.¹⁹

The HP Color LaserJet Enterprise M856 series is ENERGY STAR® certified.



Help reduce waste with HP Roam

Submit print jobs while on the go from any device, and release at any of your HP Roam-enabled office printers—simply and securely.⁸ Print only the jobs that are truly needed to help reduce wasted paper, toner, and time.

Print jobs are submitted to the cloud and can then be securely retrieved from any enabled device in the office or home office. There's no need to worry about device-to-printer compatibility or connectivity.



Benefit from reduced energy consumption

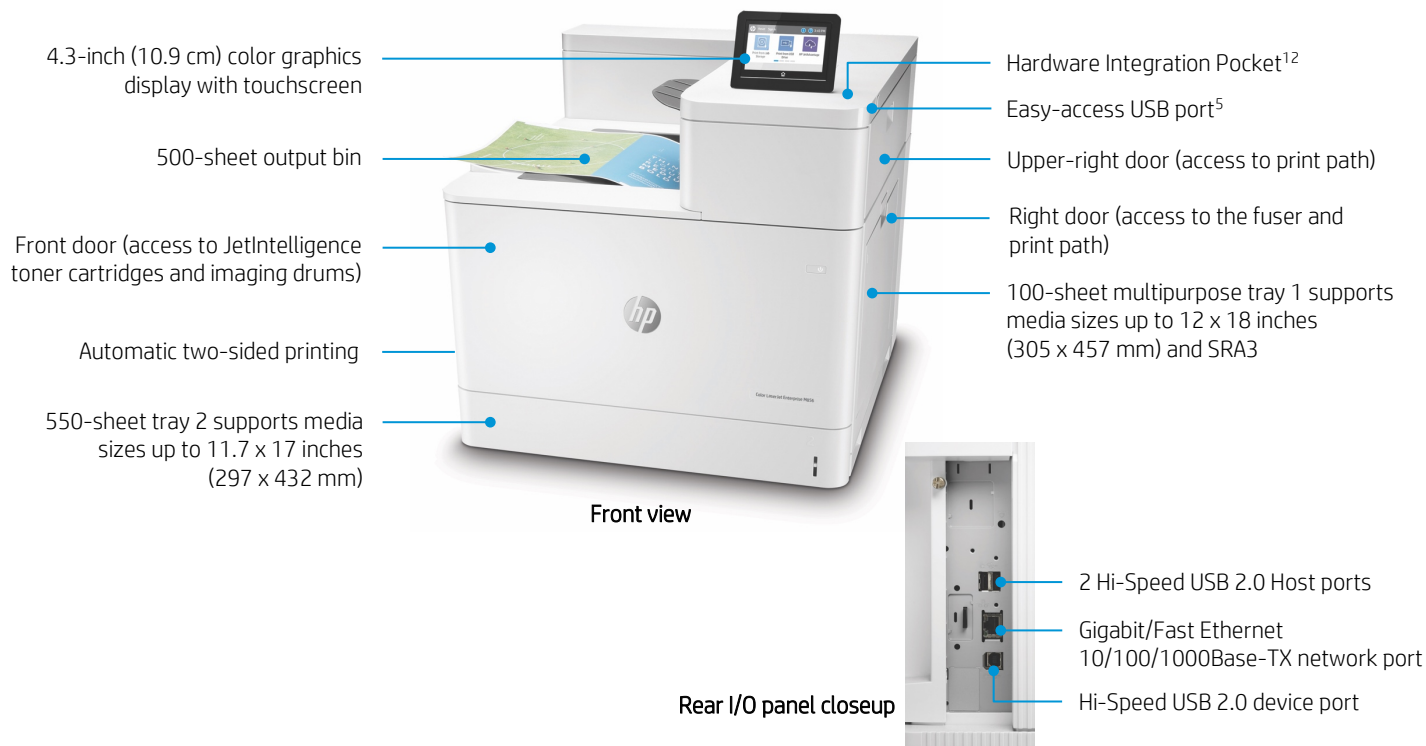
Help keep energy costs down without compromising performance. Save energy and help cut printing costs with HP Auto-On/Auto-Off Technology²⁰ and Instant-on Technology—intelligence that readies your LaserJet right when you need it and turns it off when you don't.

Save paper and conserve resources with automatic two-sided printing. Consume up to 50% less paper by printing on both sides of the page. The duplex print setting is set at default paper savings mode to help save paper right out of the box.²¹

Easily recycle your Original HP cartridges at no additional charge through HP Planet Partners.²²

Get to know the HP Color LaserJet Enterprise M856 series

HP Color LaserJet Enterprise M856dn shown



Series at a glance



Model (product number)	M856dn (T3U51A)	M856x (T3U52A)
Print speed (letter/A4, black and color) ⁴	Up to 55/56 ppm (<i>both models</i>)	
Enhanced print mode for sharper, more vivid graphics	✓	✓
Automatic two-sided printing (default ²¹)	✓	✓
100-sheet multipurpose tray 1 and 550-sheet tray 2	✓	✓
1x550-sheet paper tray	Optional (add up to two)	✓ (Tray 3 standard; add up to one additional)
2x550-sheet paper tray and stand ²³	Optional (add up to one stand only)	✓
2,700-sheet HCI paper tray and stand ²³	Optional (add up to one stand only)	Not applicable
HP LaserJet stand ²³	Optional (add up to one stand only)	Not applicable
Input capacity (standard/maximum ²⁴)	Up to 650/4,450 sheets	Up to 2,300/2,850 sheets
Recommended monthly page volume ²⁵	Up to 50,000 pages (<i>both models</i>)	
Cartridge yield ²⁶ (A/X)	Black: ~16,000/34,000 pages; Color: ~13,000/29,000 pages	
HP High-Performance Secure Hard Disk	Optional	Optional
Dual-band Wi-Fi® and Wi-Fi Direct with Bluetooth® Low Energy ⁶	Optional	✓
NFC touch-to-print ⁷	Optional	Optional

HP Color LaserJet Enterprise M856 series – Configuration

Add up to one of the following stand accessories:



HP LaserJet Stand (T3V28A)

- Storage for paper and supplies



2x550-sheet tray and stand (T3V29A)

- Tray 1: Up to 550 sheets
- Tray 2: Up to 550 sheets
- Media size: Up to 12 x 18 in and SRA3
- Media weight: 16 to 68 lb



High-capacity input tray (T3V30A)

- Up to 2,700 sheets
- Media size: Up to letter
- Media weight: 16 to 68 lb



1x550-sheet tray (T3V27A)

- Add up to two (M856dn)
- Add up to one (M856x)
- Media size: Up to 12 x 18 in and SRA3
- Media weight: 16 to 68 lb



Standard on M856dn model:

- 100-sheet multipurpose tray 1
 - Media size: Up to 12 x 18 in and SRA3
 - Media weight: 16 to 80 lb bond
- 550-sheet tray 2
 - Media size: Up to 11.7 x 17 in
 - Media weight: 16 to 68 lb bond



Standard on M856x model:

- 100-sheet multipurpose tray 1
 - Media size: Up to 12 x 18 in and SRA3
 - Media weight: 16 to 80 lb bond
- 550-sheet tray 2
 - Media size: Up to 11.7 x 17 in
 - Media weight: 16 to 68 lb bond
- 550-sheet tray 3
 - Media size: Up to 11.7 x 17 in
 - Media weight: 16 to 68 lb bond
- 2x550-sheet tray and stand
 - Media size: Up to 12 x 18 in and SRA3
 - Media weight: 16 to 68 lb bond

Paper-handling accessories

The HP Color LaserJet Enterprise M856dn model comes standard with a 100-sheet multipurpose tray and one 550-sheet tray. The M856dn model can add up to two additional 550-sheet paper trays, as well as one stand: 2x550-sheet paper tray and stand, or 2,700-sheet HCI paper tray and stand, or HP LaserJet stand. The addition of two 550-sheet input trays and the 2,700-sheet HCI paper tray and stand is required to reach the maximum input capacity of 4,450 sheets.

The HP Color LaserJet Enterprise M856x model comes standard with a 100-sheet multipurpose tray, two 550-sheet trays, and the 2x550-sheet paper tray and stand. The addition of one optional 550-sheet paper tray is required to reach the maximum input capacity of 2,850 sheets.

Other optional accessories are included in the Ordering information on page 13.

HP Color LaserJet Enterprise M856dn



HP LaserJet 550-sheet Paper Tray (T3V27A)



HP LaserJet Stand (T3V28A)



HP LaserJet 2x550-sheet Paper Tray and Stand (T3V29A)



HP LaserJet 2,700-sheet High-Capacity Input Tray and Stand (T3V30A)

Optional accessory ⁹	Add up to two	Choose one optional stand		
Maximum input capacity with accessory ²⁴	1,200 sheets (with one tray) 1,750 sheets (with two trays)	N/A	1,750 sheets 2,300 sheets (Tray and stand plus additional 550-sheet tray) 2,850 sheets (Tray and stand plus two additional 550-sheet trays)	3,350 sheets 3,900 sheets (HCI plus additional 550-sheet tray) 4,450 sheets (HCI plus two additional 550-sheet trays)

HP Color LaserJet Enterprise M856x



HP LaserJet 550-sheet Paper Tray (T3V27A)

Optional accessory ⁹	Add up to one
Maximum input capacity with accessory ²⁴	2,850 sheets

Technical specifications

	HP Color LaserJet Enterprise M856dn	HP Color LaserJet Enterprise M856x
Product number	T3U51A	T3U52A
Control panel/data entry	4.3-inch (10.9 cm) color graphic display with touchscreen; easy-access USB ⁵	
Print speed (letter/A4, black and color)⁴	Up to 55/56 ppm (<i>both models</i>)	
First page out (letter and A4)	From ready: ³ as fast as 5.9/6.3 seconds, black/color (<i>both models</i>) From sleep: ²⁷ as fast as 11.6/11.8 seconds, black/color (<i>both models</i>)	
Print resolution	Default: Up to 600 x 600 dpi (<i>both models</i>) Best: Up to 1200 x 1200 dpi (<i>both models</i>)	
Printing features	Print preview, duplex printing, print multiple pages per sheet (2, 4, 6, 9, 16), collation, watermarks, store print jobs, HP EasyColor	
Two-sided printing (default²¹)	Automatic (<i>both models</i>)	
Processor	1.2 GHz (<i>both models</i>)	
Memory	1.5 GB/3.5 GB (standard/maximum ²⁸) (<i>both models</i>)	
Storage	Standard: 16 GB eMMC (<i>both models</i>) Optional: HP High-Performance Secure Hard Disk ¹¹ (<i>both models</i>)	
Durability ratings		
RMPV ²⁵	Up to 50,000 pages (<i>both models</i>)	
Duty cycle ²⁹	Up to 250,000 pages (<i>both models</i>)	
Media specifications		
Input capacity	Up to 650 sheets, standard; up to 4,450 sheets, maximum ²⁴ 100-sheet multipurpose tray 1: Up to 100 sheets 550-sheet input tray 2: Up to 550 sheets	Up to 2,300 sheets, standard; up to 2,850 sheets, maximum ²⁴ 100-sheet multipurpose tray 1: Up to 100 sheets 550-sheet input tray 2: Up to 550 sheets 550-sheet input tray 3: Up to 550 sheets 2x550-sheet paper tray and stand
Output capacity	Up to 500 sheets (<i>both models</i>)	
Media sizes	100-sheet multipurpose tray 1: Statement, 3 x 5 index card, 4 x 6 index card, 5 x 7 index card, 5 x 8 index card, letter, letter-R, legal, executive, 11 x 17 in, 8.5 x 13 in, 12 x 18 in, Envelopes (#9, #10, Monarch); A3, A4, A4-R, A5, A6, RA3, SRA3, RA4, SRA4, B4 (JIS), B5 (JIS), B6 (JIS), Oficio (216 x 340 mm), 8K (270 x 390 mm), 8K (260 x 368 mm), 8K (273 x 394 mm), 16K (195 x 270 mm), 16K (184 x 260 mm), 16K (197 x 273 mm), Postcard (JIS), Dpostcard (JIS), Envelopes (B5, C5, C6, DL); Custom media sizes: 2.5 x 5 to 12.6 x 18 in (64 x 127 to 320 x 457 mm) 550-sheet input tray 2: Letter, letter-R, legal, executive, 8.5 x 13 in, 11 x 17 in; A3, A4, A4-R, A5, RA4, SRA4, B4 (JIS), B5 (JIS), Oficio (216 x 340 mm), 8K (270 x 390 mm), 8K (260 x 368 mm), 8K (273 x 394 mm), 16K (195 x 270 mm), 16K (184 x 260 mm), 16K (197 x 273 mm), Dpostcard (JIS); Custom media sizes: 5.8 x 5.8 to 11.7 x 17 in (148 x 148 to 297 x 432 mm) Optional 1x550 and 2x550 tray and stand: Letter, letter-R, legal, executive, 8.5 x 13 in, 11 x 17 in, 12 x 18 in; A3, A4, A4-R, A5, RA3, SRA3, RA4, SRA4, B4 (JIS), B5 (JIS), Oficio (216 x 340 mm), 8K (270 x 390 mm), 8K (260 x 368 mm), 8K (273 x 394 mm), 16K (195 x 270 mm), 16K (184 x 260 mm), 16K (197 x 273 mm), Dpostcard (JIS); Custom media sizes: 5.8 x 5.8 to 12.6 x 18 in (148 x 148 to 320 x 457 mm) Optional 2700-sheet HCl paper tray and stand: Letter; A4; Custom media sizes: 11 x 8.27 to 11.7 x 8.5 in (279 x 210 to 297 x 216 mm) Duplex: Letter, executive, 8.5 x 13 in, 11 x 17 in; A3, A4, A4R, A5, RA3, SRA3, RA4, SRA4, B4 (JIS), B5 (JIS), Oficio (216 x 340 mm), 8K, 16K (195 x 270 mm), 16K (184 x 260 mm), 16K (197 x 273 mm)	100-sheet multipurpose tray 1: Statement, 3 x 5 index card, 4 x 6 index card, 5 x 7 index card, 5 x 8 index card, letter, letter-R, legal, executive, 11 x 17 in, 8.5 x 13 in, 12 x 18 in, Envelopes (#9, #10, Monarch); A3, A4, A4-R, A5, A6, RA3, SRA3, RA4, SRA4, B4 (JIS), B5 (JIS), B6 (JIS), Oficio (216 x 340 mm), 8K (270 x 390 mm), 8K (260 x 368 mm), 8K (273 x 394 mm), 16K (195 x 270 mm), 16K (184 x 260 mm), 16K (197 x 273 mm), Postcard (JIS), Dpostcard (JIS), Envelopes (B5, C5, C6, DL); Custom media sizes: 2.5 x 5 to 12.6 x 18 in (64 x 127 to 320 x 457 mm) 550-sheet input tray 2: Letter, letter-R, legal, executive, 8.5 x 13 in, 11 x 17 in; A3, A4, A4-R, A5, RA4, SRA4, B4 (JIS), B5 (JIS), Oficio (216 x 340 mm), 8K (270 x 390 mm), 8K (260 x 368 mm), 8K (273 x 394 mm), 16K (195 x 270 mm), 16K (184 x 260 mm), 16K (197 x 273 mm), Dpostcard (JIS); Custom media sizes: 5.8 x 5.8 to 11.7 x 17 in (148 x 148 to 297 x 432 mm) 1x550 and 2x550 tray and stand: Letter, letter-R, legal, executive, 8.5 x 13 in, 11 x 17 in, 12 x 18 in; A3, A4, A4-R, A5, RA3, SRA3, RA4, SRA4, B4 (JIS), B5 (JIS), Oficio (216 x 340 mm), 8K (270 x 390 mm), 8K (260 x 368 mm), 8K (273 x 394 mm), 16K (195 x 270 mm), 16K (184 x 260 mm), 16K (197 x 273 mm), Dpostcard (JIS); Custom media sizes: 5.8 x 5.8 to 12.6 x 18 in (148 x 148 to 320 x 457 mm) Duplex: Letter, executive, 8.5 x 13 in, 11 x 17 in; A3, A4, A4R, A5, RA3, SRA3, RA4, SRA4, B4 (JIS), B5 (JIS), Oficio (216 x 340 mm), 8K, 16K (195 x 270 mm), 16K (184 x 260 mm), 16K (197 x 273 mm)

	HP Color LaserJet Enterprise M856dn	HP Color LaserJet Enterprise M856x
Media weights	100-sheet multipurpose tray 1: 16 to 80 lb; 60 to 300 g/m ² (plain papers), up to 220 g/m ² (glossy/coated) 550-sheet input tray 2: 16 to 68 lb; 60 to 256 g/m ² (plain papers), up to 220 g/m ² (glossy/coated) Optional 1x550 and 2x550 tray and stand: 16 to 68 lb; 60 to 256 g/m ² Optional 2700-sheet HCl paper tray and stand: 16 to 68 lb; 60 to 256 g/m ² Duplex: 16 to 58 lb; 60 to 216 g/m ²	100-sheet multipurpose tray 1: 16 to 80 lb; 60 to 300 g/m ² (plain papers), up to 220 g/m ² (glossy/coated) 550-sheet input tray 2: 16 to 68 lb; 60 to 256 g/m ² (plain papers), up to 220 g/m ² (glossy/coated) 1x550 and 2x550 tray and stand: 16 to 68 lb; 60 to 256 g/m ² Duplex: 16 to 58 lb; 60 to 216 g/m ²
Media types	Paper (plain, heavy, extra heavy, glossy, light, recycle, tough), envelopes, labels, glossy film, cardstock, transparencies	
Print languages	HP PCL 6, HP PCL 5 (HP PCL 5 driver available from the Web only), HP postscript level 3 emulation, native PDF printing (v 1.7), Apple® AirPrint®, ³⁰ Google Cloud Print™	
Fonts and typefaces	105 internal TrueType fonts scalable in HP PCL, Barcode font variants (Code 39, I2of5, UPC/ENA, Code 128, OCR-A/OCR-B), 92 internal scalable fonts in HP Postscript level 3 emulation (Euro symbol built-in); 1 internal Unicode fonts (Andale Mono WorldType); 2 Internal Windows Vista® 8 fonts (Calibri, Cambria); additional font solutions available via third-party flash memory cards; HP LaserJet fonts and IPDS Emulation available at hp.com/go/laserjetfonts	
Connectivity	2 Hi-Speed USB 2.0 Host, Hi-Speed USB 2.0 device, Gigabit Ethernet 10/100/1000Base-TX network, 2 nd -generation Hardware Integration Pocket (HIP2) ¹²	
		Plus: Wireless 802.11n/BLE
Mobile printing capability	Apple AirPrint, ³⁰ HP ePrint, ³¹ Mopria-certified, HP Roam-capable for easy printing, ⁸ Google Cloud Print	
Network capabilities	Standard: via HP Jetdirect Ethernet embedded print server, 802.3az (EEE) support on Fast Ethernet and Gig Links, IPsec Optional: Dual-band Wi-Fi and Wi-Fi Direct, ⁶ NFC touch-to-print, ⁷ second Ethernet port	Standard: via HP Jetdirect Ethernet embedded print server, 802.3az (EEE) support on Fast Ethernet and Gig Links, IPsec; Dual-band Wi-Fi and Wi-Fi Direct Optional: NFC touch-to-print, ⁷ second Ethernet port
Network protocols	Via built-in networking solution: TCP/IP, IPv4, IPv6 Print: TCP-IP port 9100 Direct Mode, LPD (raw queue support only), Web Services Printing, IPP 2.0, Apple AirPrint, ³⁰ HP ePrint, ³¹ FTP Print, Google Cloud Print Discovery: SLP, Bonjour®, Web Services Discovery IP Config: IPv4 (BootP, DHCP, AutoIP, Manual, TFTP Config, ARP-Ping), IPv6 (Stateless Link-Local and via Router, Statefull via DHCPv6) Management: SNMPv2/v3, HTTP/HTTPS, Telnet, TFTP Config, Syslog Security: SNMPv3, SSL Cert Management, IPsec/Firewall, ACL, 802.1x	
Security management	SNMPv3, Web Services over port 7627, SSL/TLS 1.0/1.1/1.2, FIPS 140-2, Certificate Management, Embedded Web Server, WPA2-Enterprise, 802.1X authentication (EAP- PEAP, EAP-TLS), IPsec/Firewall with Certificate, Pre-Shared Key Authentication, and Kerberos Authentication, HP Web Jetadmin 10, ¹³ IPsec Configuration using IPsec Plug-in	
Printer management	HP Device Toolbox, HP JetAdvantage Security Manager, ¹⁴ HP Printer Assistant ,HP Web Jetadmin ¹³ software, HP SNMP Proxy Agent, HP WS Pro Proxy Agent, Printer Administrator Resource Kit for HP Universal Print Driver ¹⁷ (Driver Configuration Utility and Driver Deployment Utility, Managed Printing Administrator)	
Compatible operating systems ³²	Windows® OS: Windows Client OS (32/64 bit), Windows 10, Windows 8.1, Windows 7 Starter Edition SP1, UPD Windows 7 Ultimate Mobile OS: iOS, Android™ Mac OS: High Sierra v10.13, Mojave v10.14, Catalina v10.15 Discrete PCL6 Printer Drivers: For more information, see support.hp.com . UPD PCL6/PS Printer Drivers: ¹⁷ For more information, see http://hp.com/go/upd	
Compatible network operating systems	Windows Server® 2008 R2 64-bit, Windows Server 2008 R2 64-bit (SP1), Windows Server 2012 64-bit, Windows Server 2012 R2 64-bit, Windows Server 2016 64-bit, Windows Server 2019 64-bit, Failover Cluster 2008 R2, Failover Cluster 2012 R2, Terminal server 2008 R2, Remote Desktop server 2012 R2 Citrix® Server 6.5, Citrix XenApp & XenDesktop® 7.6, Novell iPrint server, Citrix Ready Kit Certification - Up to Citrix Server 7.18; For more information, see http://citrixready.citrix.com Linux®: For more information, see http://developers.hp.com/hp-linux-imaging-and-printing Unix®: For more information, see http://hp.com/go/unixmodelscripts UPD PCL6/PS Printer Drivers: ¹⁷ For more information, see http://hp.com/go/upd	
System requirements, Windows	A compatible operating system (see above); 2 GB available hard disk space; Internet connection or USB port; Internet browser; OS hardware requirements (see microsoft.com)	
System requirements, Macintosh	A compatible operating system (see above); 2 GB available hard disk space; Internet connection or USB port; OS hardware requirements (see apple.com)	
Dimensions (width x depth x height)	Operating: 21.89 x 24.02 x 20.47 in (556 x 610 x 520 mm) Maximum: ³³ 36.26 x 24.02 x 23.54 in (921 x 610 x 598 mm)	Operating: 21.89 x 25.94 x 38.19 in (556 x 659 x 970 mm) Maximum: ³³ 44.88 x 33.43 x 41.26 in (1140 x 849 x 1048 mm)
Weight (with print cartridges)	115.3 lb (52.3 kg)	188.3 lb (85.4 kg)

	HP Color LaserJet Enterprise M856dn	HP Color LaserJet Enterprise M856x
What's in the box	HP Color LaserJet Enterprise M856dn printer; HP Black Original LaserJet Toner Cartridge (~16,000 pages), HP Cyan, Magenta and Yellow Original LaserJet Toner Cartridges (~13,000 pages each), and 4 HP Original LaserJet Imaging Drums (~65,000 pages each color); Getting started Guide; Power cord; USB cable not included (purchase separately)	HP Color LaserJet Enterprise M856x printer; HP Black Original LaserJet Toner Cartridge (~16,000 pages), HP Cyan, Magenta and Yellow Original LaserJet Toner Cartridges (~13,000 pages each), and 4 HP Original LaserJet Imaging Drums (~65,000 pages each color); Getting started Guide; Power cord; USB cable not included (purchase separately)
Downloadable software	<p>From 123.hp.com: HP Easy Start (Guided Software Install for Windows and Mac)</p> <p>From hp.com: Windows OS: Full solution software and drivers, Basic solution software and drivers, HP PCL6 XPS Discrete Print Driver, Product documentation and support</p> <p>From hp.com: Mac OS: HP Easy Start (Guided Software Install), HP Mac PS Print Driver, HP Easy Admin</p> <p>For Mobile OS: iOS: For more information, see hp.com/go/businessmobileprinting; Android: For more information, see hp.com/go/businessmobileprinting</p> <p>From hp.com for printer administrators: Printer Administrator Resource Kit (Driver Configuration Utility – Driver Deployment Utility – Managed Printing Administrator), HP Universal Print Drivers¹⁷ PCL6 GDI and PS GDI for Windows, HP ePrint Software³¹ (Mobile Driver for Windows), SAP Print Drivers: For more information, see support.hp.com/us-en/document/c05051702, HP Web Jetadmin,¹³ HP JetAdvantage Security Manager,¹⁴ HP Roam,⁸ HPLIP Linux Printer Driver: For more information, see hplipopensource.com/hplip-web/index.html; Unix Model Script Printer Driver: For more information, see hp.com/go/unixmodelscripts, ReadIris</p>	
Warranty	One-year, next-business day, onsite warranty. Warranty and support options vary by product, country, and local legal requirements. Contact your Vendor or go to hp.com/support to learn about HP world-class service and support options in your region.	
HP SureSupply supported	HP SureSupply alerts you when your print cartridge is running low and helps you purchase online or locally through HP or a participating retailer. Only available with Original HP supplies; Internet access required. To learn more, visit hp.com/go/SureSupply .	

Environmental and power specifications

	HP Color LaserJet Enterprise M856dn	HP Color LaserJet Enterprise M856x
Environmental ranges		
Temperatures	Recommended operating range: 59 to 80.6° F (15 to 27° C); Operating range: 50 to 90.5° F (10 to 32.5° C); Storage range: -4 to 104°F (-20 to 40°C)	
Relative Humidity	Recommended operating range: 30 to 70% RH; Operating range: 10 to 80% RH	
Acoustic pressure emissions³⁴	Ready mode: 33 dB(A); Active print: 53 dB(A)	Ready mode: 33 dB(A); Active print: 52 dB(A)
Acoustic power emissions³⁴	Ready mode: 4.9 B(A); Active print: 6.8 B(A) <i>(both models)</i>	
Power specifications³⁵		
Power supply	Built-in 115V or 220V, 12A; Input voltage: 110 to 127 VAC (+/- 10%), 220 to 240 VAC (+/- 10%), 50/60 Hz (+/- 3 Hz), 6A	
Power consumption	Printing: 870 watts; Ready: 77 watts; Sleep: 0.7 watts; HP Auto-On/Auto-Off: 0.7 watts; Auto-Off: 0.08 watts; Off: 0.08 watts	
Typical Electricity Consumption (TEC) ³⁶	ENERGY STAR (Ver. 3.0): 0.725 kWh/Week <i>(both models)</i>	
Energy-saving features	HP Auto-On/Auto-Off Technology; ²⁰ Instant-on Technology <i>(both models)</i>	
Environmental specifications	ENERGY STAR certified, CECP, EPEAT Silver ³⁷	ENERGY STAR certified, CECP, EPEAT Silver, Special government options available with EPEAT Gold ³⁷
Safety and regulatory compliance	IEC 60950-1:2005 +A1:2009 +A2:2013 (International); EN60950-1:2006 +A11:2009 +A1:2010 +A12:2011 +A2:2013 (EU); EN 60825-1:2014 / IEC 60825-1:2014 (Class 1 Laser Product); EN 62479:2010 / IEC 62479:2010; Low Voltage Directive 2014/35/EU with CE Mark (Europe); GS Certificate (Germany, Europe); UL/cUL Listed and UC CoC (US/Canada); CAN/CSA C22.2 No. 60950-1-07 2nd Ed. 2011-12; Compliance with Laser safety standards 21 CFR 1040.10 and 1040.11 except for deviations pursuant to Laser notice No. 50, Dated June 24, 2007; Other safety approvals as required by individual countries	
Electromagnetic emission standard	CISPR 22:2008 (International) - Class A, CISPR 32:2012 (International) - Class A, EN 55032:2012 (EU) - Class A, EN 61000-3-2: 2014, EN 61000-3-3: 2013, EN 55024: 2010, EMC Directive 2014/30/EU, FCC 47 CFR Part 15 Class A/ICES-003, Issue 6 Class A; Other EMC approvals as required by individual countries	

Ordering information

Use accessories and supplies specifically designed for the MFP to help provide efficient performance. To order the accessories and supplies listed here, go to hp.com. To contact HP by country, please visit hp.com/go/contact. If you don't have access to the Internet, contact your qualified HP dealer, or call HP (U.S.) at (800) 282 6672.

Products	HP Color LaserJet Enterprise M856dn HP Color LaserJet Enterprise M856x	T3U51A T3U52A
Supplies³⁸	HP 659A Black LaserJet Toner Cartridge (~16,000 pages) HP 659A Cyan LaserJet Toner Cartridge (~13,000 pages) HP 659A Yellow LaserJet Toner Cartridge (~13,000 pages) HP 659A Magenta LaserJet Toner Cartridge (~13,000 pages) HP 659X Black LaserJet Toner Cartridge (~34,000 pages) HP 659X Cyan LaserJet Toner Cartridge (~29,000 pages) HP 659X Yellow LaserJet Toner Cartridge (~29,000 pages) HP 659X Magenta LaserJet Toner Cartridge (~29,000 pages) HP 660A Original LaserJet Imaging Drum (~65,000 pages, universal for all 4 colors) HP LaserJet 110V Fuser Kit (~225,000 pages) HP LaserJet 220 Fuser Kit (~225,000 pages) HP LaserJet Image Transfer Belt Kit (~150,000 pages) HP LaserJet Toner Collection Unit (~90,000 pages)	W2010A W2011A W2012A W2013A W2010X W2011X W2012X W2013X W2004A 4YL16A 4YL17A 3WT89A 3WT90A
Accessories	HP LaserJet 550-sheet Paper Tray ⁹ HP LaserJet Stand ⁹ HP LaserJet 2x550-sheet Paper Tray and Stand ⁹ HP LaserJet 2,700-sheet High-capacity Input Tray and Stand ⁹ HP High-Performance Secure Hard Disk HP TAA Version Secure Hard Disk Drive (U.S. Government) HP Accessibility Assistant HP Internal USB Ports HP Foreign Interface Harness HP 1 GB DDR3x32 144-Pin 800MHz SODIMM HP 2 GB DDR3x32 144-Pin 800MHz SODIMM HP 2 GB DDR3x32 144-Pin 800MHz DIMM TAA (U.S. Government) HP Jetdirect 2900nw Print Server HP Jetdirect 3100w BLE/NFC/Wireless Accessory HP USB Universal Card Reader HP HIP2 Keystroke Reader HP Legic Reader HP SmartCard NIPRNet Solution for US Government (U.S. only) (requires B5L28A) HP SmartCard SIPRNet Solution for US Government (U.S. only) (requires B5L28A)	T3V27A T3V28A T3V29A T3V30A B5L29A 5EL03A 2MU47A B5L28A B5L31A E5K48A E5K49A 2NR09A J8031A 3JN69A X3D03A Y7C05A 4QL32A CC543B F8B30A
Solutions	HP Web Jetadmin: hp.com/go/wja HP Universal Print Driver: hp.com/go/upd HP JetAdvantage Security Manager: hp.com/go/securitymanager HP JetAdvantage On Demand Cloud Solutions: hp.com/go/ietadvantageondemand HP LaserJet fonts, barcodes, and IPDS Emulation available at hp.com/go/laserjetfonts To learn more about available infrastructure, management, and workflow solutions, visit hp.com/go/printing_solutions	

¹ In July 2018, HP was named Buyers Lab's Most Reliable Business Printer & MFP Brand by the analysts at Buyers Lab (BLI), based on lab testing from 2012 to 2018. For more information, see keypointintelligence.com/news/awards.

² Based on HP review of 2018 published security features of competitive in-class printers. Only HP offers a combination of security features that can monitor to detect and automatically stop an attack then self-validate software integrity in a reboot. For a list of printers, visit: hp.com/go/PrintersThatProtect. For more information, visit: hp.com/go/printersecurityclaims

³ Measured using ISO/IEC 17629. For more information, see hp.com/go/printerclaims. Exact speed varies depending on the system configuration, software application, driver, and document complexity.

⁴ Measured using ISO/IEC 24734, excludes first set of test documents. For more information, see hp.com/go/printerclaims. Exact speed varies depending on the system configuration, software application, driver, and document complexity.

⁵ An administrator must enable the easy-access USB port before use.

⁶ Dual-band Wi-Fi® and Wi-Fi Direct with Bluetooth® Low Energy is standard on the HP Color LaserJet Enterprise M856x model and optional on the M856dn model with purchase of the HP Jetdirect 3100w BLE/NFC/Wireless Accessory (3JN69A). Wireless operations are compatible with 2.4 GHz and 5.0 GHz operations only. Wi-Fi is a registered trademark of Wi-Fi Alliance®. Bluetooth is a trademark owned by its proprietor and used by HP Inc. under license. Learn more at hp.com/go/mobileprinting.

⁷ NFC touch-to-print is optional and can be added with purchase of the HP Jetdirect 3100w BLE/NFC/Wireless Accessory (3JN69A). Mobile device must support Near-Field Communication (NFC)-enabled printing. For more information, see hp.com/go/businessmobileprinting.

⁸ Subscription or accessory may be required. For more information, visit hp.com/go/roam. To enable HP Roam, some devices may require firmware to be upgraded and an optional accessory to add Bluetooth® Low Energy (BLE) beaconing capabilities. Customer can purchase the HP Jetdirect 3100w BLE/NFC/Wireless accessory or the RadBeacon USB.

⁹ Add up to two optional 550-sheet paper trays (T3V27A) in addition to up to one stand or tray and stand (T3V28A, T3V29A, or T3V30A). For U.S. models, device does not meet ADA height requirements when configured with maximum paper handling accessory options (maximum reached using two 550-sheet trays and the 2,700-sheet HCI paper tray and stand).

¹⁰ Some features require additional purchase. A FutureSmart service pack update may be required to activate security features. Learn more at hp.com/go/printsecurity.

¹¹ The optional HP High-Performance Secure Hard Disk (B5L29A) (FIPS 140-2 validated hard disk) can be added to the HP Color LaserJet Enterprise M856 series models.

¹² Solutions deployed through the Hardware Integration Pocket (HIP) may require additional purchase. The HP Color LaserJet Enterprise M856 series models come with a second-generation HIP.

¹³ HP Web Jetadmin is available for download at no additional charge at hp.com/go/wia.

¹⁴ HP JetAdvantage Security Manager must be purchased separately. For details, see hp.com/go/securitymanager.

¹⁵ HP JetAdvantage Secure Print works with any network-connected printer or MFP. On-device authentication is available for many HP LaserJet, PageWide, and OfficeJet Pro devices and selected non-HP devices. Some devices may require a firmware upgrade. Internet connection required for cloud storage and retrieval of print jobs. Print-job release from a mobile device requires a network connection and QR code. For more information and a list of supported printers and MFPs, see hp.com/go/JetAdvantageSecurePrint.

¹⁶ Color access control capabilities vary from device to device.

¹⁷ The HP Universal Print Driver is available for download at no additional charge at hp.com/go/upd.

¹⁸ Based on HP internal testing using normalized TEC value, 2019.

¹⁹ A printing system consists of HP printer, paper, and toner cartridge(s).

²⁰ HP Auto-On/Auto-Off Technology capabilities are subject to printer and settings.

²¹ All LaserJet Pro, Enterprise, Managed, and PageWide products with introductions beginning in September 2019 will include consistent worldwide default duplex settings (across bundles/drivers); product introductions before September 2019 may have inconsistent default duplex settings across drivers.

²² Program availability varies. For more information, visit hp.com/recycle.

²³ The HP Color LaserJet Enterprise M856dn model can add only one stand at a time: 2x550-sheet paper tray and stand; or 2,700-sheet HCI paper tray and stand; or HP LaserJet stand.

²⁴ Selection of optional paper-handling accessories required to reach maximum input capacity.

²⁵ HP recommends that the number of printed pages per month be within the stated range for optimum device performance, based on factors including supplies replacement intervals and device life over an extended warranty period.

²⁶ Average black and color composite (C/M/Y) declared toner yields based on ISO/IEC 19798 and continuous printing. Actual yields vary considerably based on images printed and other factors. For details, see hp.com/go/learnaboutsupplies. Optional high-yield cartridges are not included with printer; please purchase separately.

²⁷ Measured after 15 minutes in sleep. Exact speed varies depending on the system configuration, software application, driver, document complexity, and time in sleep.

²⁸ To achieve maximum memory, purchase a DIMM accessory (TAA compliant only with TAA compliant DIMM). A firmware update may be required for configuration page to accurately reflect the accessory DIMM is installed.

²⁹ Duty cycle is defined as the maximum number of pages per month of imaged output. HP recommends that the number of printed pages per month be within the stated range for optimum device performance, based on factors including supplies replacement intervals and device life over an extended warranty period.

³⁰ Supports the following devices running iOS 4.2 or later: iPad®, iPad 2, iPhone® (3GS or later), iPod touch® (3rd generation or later). Works with HP's AirPrint®-enabled printers and requires the printer be connected to the same network as your iOS device. Wireless performance is dependent on physical environment and distance from the access point.

³¹ Printer requires ePrint account registration. App or software may be required. Wireless operations are compatible with 2.4 GHz operations only. Learn more at hp.com/go/mobileprinting.

³² Full solution software available only for Windows® 7 and newer, UPD software available only for Windows 7 and newer, HP Software for Mac and Windows is no longer included on the CD, but can be downloaded from 123.hp.com. Legacy Windows Operating Systems (XP, Vista®, and equivalent servers) get print and scan drivers only with a reduced feature set, Windows RT OS for Tablets (32- and 64-bit) uses a simplified HP print driver built into the RT OS.

³³ Maximum dimensions of the device are measured by the standard configuration with all paper trays open.

³⁴ Acoustic values are subject to change. For current information see hp.com/support. Configuration tested: base model, simplex printing, A4 paper at an average of 56 ppm.

³⁵ Power requirements are based on the country/region where the printer is sold. Do not convert operating voltages. This will damage the printer and void the product warranty. Power consumption values typically based on measurement of 115V device.

³⁶ Blue Angel (BA) TEC is equal to Best TEC. Power requirements are based on the country/region where the printer is sold. Do not convert operating voltages. This will damage the printer and void the product warranty. ENERGY STAR® Version 3.0 TEC is not comparable to ENERGY STAR Version 2.0 TEC values or BA TEC values. BA uses ENERGY STAR Version 2.0 TEC. ENERGY STAR value typically based on measurement of 115V device.

³⁷ EPEAT® registered where applicable. EPEAT registration varies by country. See epeat.net for registration status by country.

³⁸ Stated yield is based on 5% coverage and may vary based on coverage and media type used, media size, short edge feed on A3 devices, and job size.

Sign up for updates
hp.com/go/getupdated



© Copyright 2019 HP Development Company, L.P. The information contained herein is subject to change without notice. The only warranties for HP products and services are set forth in the express warranty statements accompanying such products and services. Nothing herein should be construed as constituting an additional warranty. HP shall not be liable for technical or editorial errors or omissions contained herein.

AirPrint, Apple, Bonjour, iPad, iPhone, and iPod touch are trademarks of Apple Inc. Android and Google Cloud Print are trademarks of Google Inc. Bluetooth is a trademark owned by its proprietor and used by HP Inc. under license. Citrix and XenDesktop are registered trademarks of Citrix Systems, Inc. and/or one more of its subsidiaries, and may be registered in the United States Patent and Trademark Office and in other countries. ENERGY STAR is a registered trademark owned by the U.S. Environmental Protection Agency. Linux is the registered trademark of Linus Torvalds in the U.S. and other countries. Microsoft, Windows, Windows Server, and Windows Vista are U.S. registered trademarks of the Microsoft group of companies. UNIX is a registered trademark of The Open Group.

4AA7-6027ENUC, November 2019, Rev. 2

