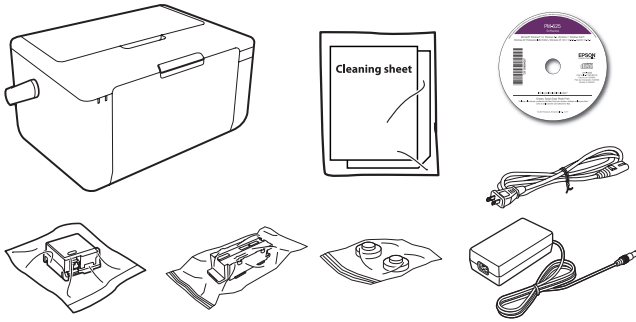


# PM-525 Start Here

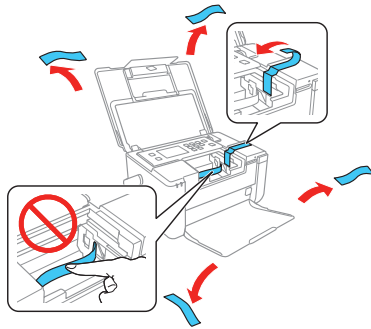
Read these instructions before using your product.

## 1 Unpack



**Note:** Do not open the ink cartridge package until you are ready to install the ink. Cartridges are vacuum packed to maintain reliability.

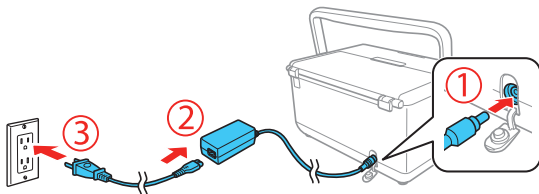
Remove all protective materials from the product.



**Caution:** Do not touch the flat white cable.

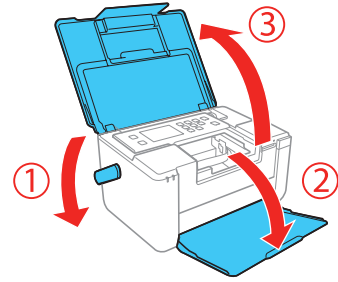
## 2 Turn on and configure

- 1 Connect the AC adapter to the back of the product. Then connect one end of the power cord to the AC adapter and the other end to an electrical outlet.

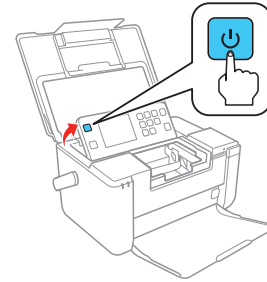


**Caution:** Do not connect to your computer yet.

- 2 Move the handle behind the printer, lower the output tray, and open the printer cover.



- 3 Raise the control panel and turn on the product.



**Note:** If an error message appears, turn off the product and check that no protective material has been left inside the product.

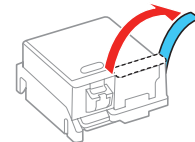
- 4 Press ▲ or ▼ to select your language, then press the OK button.

**Note:** You can change the language later using the product's control panel. For more information, see the online *User's Guide*.

## 3 Install ink cartridge

**Caution:** Keep ink cartridges out of the reach of children and don't drink the ink.

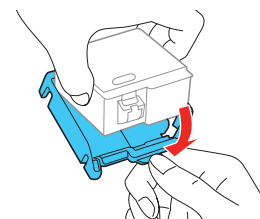
- 1 Unpack the initial ink cartridge and completely remove the yellow tape only.



**Caution:** Do not remove any other labels or seals, or ink may leak.



- 2 Remove the plastic base and carefully dispose of it.



\*413380500\*

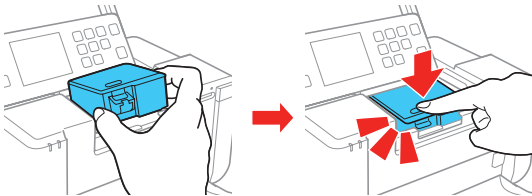
**EPSON**  
EXCEED YOUR VISION

**Caution:** Do not touch the areas on the ink cartridge shown below. Doing so may prevent normal operation and printing.



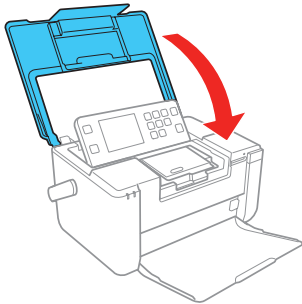
**Warning:** If ink gets on your skin, wash it thoroughly with soap and water. If ink gets into your eyes, flush them immediately with water. If ink gets into your mouth, spit it out and see a doctor right away.


- 3** Hold the cartridge with the green chip facing you and insert the cartridge at an angle as shown. Press down the ink cartridge until it clicks into place.

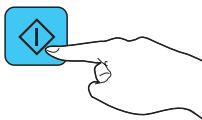


**Caution:** Make sure to insert the ink cartridge in the correct direction or you may damage the product.

- 4** Close the printer cover.



- 5** Press the  button to start charging the ink.



Ink charging takes a few minutes. Ink charging is complete when you see the home screen displayed on the LCD screen.

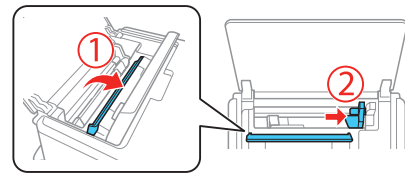
**Caution:** Do not turn off the product or open the printer cover while the product is charging or you'll waste ink.

**Note:**

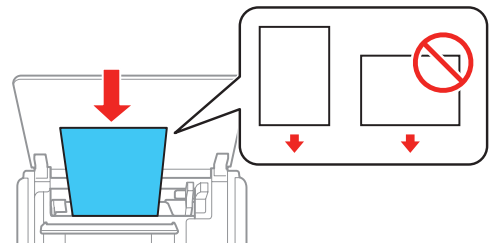
- The printer is designed for use with Epson® cartridges only, not third-party cartridges or ink.
- The cartridge included with the printer is designed for printer set up and not for resale. After some ink is used for charging, the rest is available for printing.
- If the screen is dark, the product has entered sleep mode. Press any button on the control panel to wake the product. You can adjust the sleep timer later if necessary. For details, see the online *User's Guide*.

## 4 Load paper

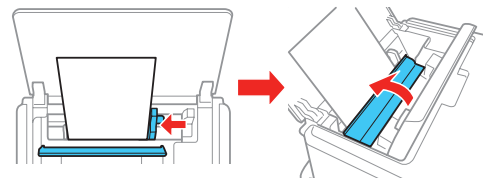
- 1** Open the rear paper feed cover if necessary. Flip the feeder guard forward and slide the edge guide to the right.



- 2** Load 4 x 6 or 5 x 7-inch photo paper, glossy or printable side up and short edge first, against the left side.



- 3** Slide the edge guide against the paper, but not too tightly, and flip the feeder guard back.



- 4** Press  or  to select **Change** on the LCD screen and press the **OK** button.

- 5** Select your paper size and press the **OK** button.

- 6** Select your paper type and press the **OK** button.

- 7** Press the **OK** button again to confirm the paper settings.

**Note:** Make sure the paper settings matches the type and size of paper you loaded.

## 5 Connect and print

Your product provides several ways to print, both at home and on the road:

- To connect your product to a mobile device on the road, see “Mobile setup.”
- To connect your product to a computer or wireless network, see “Computer setup.”
- To print from a memory card or digital camera, see the online *User’s Guide*.

### Mobile setup

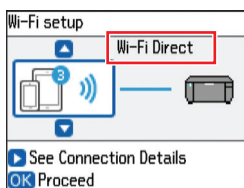
Follow the steps here to connect your product wirelessly to a mobile device without requiring a wireless router or access point (Wi-Fi Direct®).

**Note:** Wi-Fi Direct is recommended when a wireless network is not available. To set up your product on a wireless network (Infrastructure), follow the steps in “Computer setup” to have the software installer automatically attempt the wireless connection or see the online *User’s Guide* for instructions on manually setting up the wireless connection.

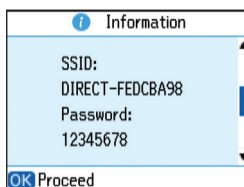
- 1 Press ◀ or ▶ to select **Wi-Fi Setup** on the LCD screen and press the **OK** button.



- 2 Press ▲ or ▼ to select **Wi-Fi Direct** and press the **OK** button.



- 3 Press the **OK** button to confirm your selection.
- 4 Press the **OK** button again to continue.
- 5 Scroll down to view the SSID (Wi-Fi network name) and password. You see a screen like this:



Use your mobile device to select the SSID displayed on the LCD screen, and enter the password shown.

- 6 Press **OK** on the product once you are done entering the password on your mobile device.
- 7 Your product and mobile device are now connected. See “Mobile printing options” for additional instructions.

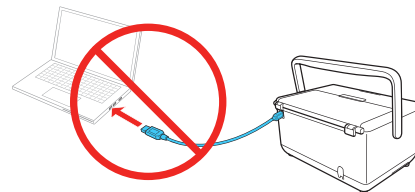
**Note:** If you see a message reminding you to set up an Epson Connect™ account, press ⏻ to turn off the reminders. You can set up an account later from your computer or mobile device.

### Computer setup

Follow the steps here to connect your product to a computer or wireless network.

**Note:** If your computer does not have a CD/DVD drive or you are using a Mac, an Internet connection is required to obtain the product software. To print from a Chromebook™, go to [www.epson.com.jm/support/gcp](http://www.epson.com.jm/support/gcp) for instructions.

- 1 Make sure the product is **NOT CONNECTED** to your computer.



**Windows®:** If you see a Found New Hardware screen, click **Cancel** and disconnect the USB cable.

- 2 Insert the product CD or download and run your product’s software package:

[www.epson.com.jm/support/pm525](http://www.epson.com.jm/support/pm525)

- 3 Follow the instructions on the screen to run the setup program.
- 4 When you see the Select Your Connection screen, select one of the following:

- **Wireless connection**

In most cases, the software installer automatically attempts to set up your wireless connection. If setup is unsuccessful, you may need to enter your network name (SSID) and password.

- **Direct USB connection**

Make sure you have a USB cable (not included) ready.

## Mobile printing options

Connect wirelessly from your smartphone, tablet, or computer. Print documents and photos from across the room or around the world:


- Print directly from your iPhone, iPad, or iPod touch. Simply connect your printer and device to the same network and tap the action icon to select the print option.
- Use Epson Print Enabler (free from Google Play™) with Android™ devices (v4.4 or later). Then connect your printer and device to the same network and tap the menu icon to select the print option.
- Print remotely with Epson Connect and Google Cloud Print™. See your online *User’s Guide* for instructions.

# Any problems?

## Network setup was unsuccessful.

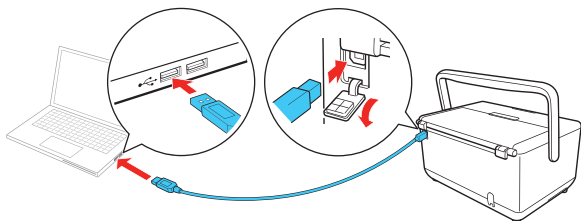
- Make sure you select the right network name (SSID).
- Restart your router (turn it off and then on), then try to connect to it again.
- The printer can only connect to a network that supports 2.4 GHz connections. If your router offers both 2.4 GHz and 5 GHz connections, make sure the 2.4 GHz network is enabled.
- If you see a firewall alert message, click **Unblock** or **Allow** to let setup continue.
- If your network has security enabled, make sure you enter your network password (WEP key or WPA passphrase) correctly. Be sure to enter your password in the correct case.
- Make sure to place your product within contact range of your 2.4 GHz router or access point. Avoid placing your product near a microwave oven, 2.4 GHz cordless phone, or large metal object, such as a filing cabinet.
- Check if your network name (SSID) contains non-ASCII characters. Your product cannot display non-ASCII characters.

## There are lines or incorrect colors in my printouts.

Run a nozzle check to see if any of the print head nozzles are clogged. (Press  if necessary, then select **Setup** > **Maintenance** > **Nozzle Check**.) Then clean the print head, if necessary. See the online *User's Guide* for more information.

## Setup is unable to find my product after connecting it with a USB cable.

Make sure the product is turned on and securely connected as shown:



# Any questions?

## User's Guide

**Windows:** Click the icon on your desktop or Apps screen to access the online *User's Guide*.

**Mac:** Click the icon in **Applications/Epson Software/Guide** to access the online *User's Guide*.

If you don't have a User's Guide icon, go to the Epson website, as described in the next column.

## Support

Visit [www.epson.com.jm/support/pm525](http://www.epson.com.jm/support/pm525) to download drivers, view manuals, get FAQs, or contact Epson.

<b>Argentina</b>	(54 11) 5167-0300	<b>Honduras**</b>	800-0122
	0800-288-37766		Code: 8320
<b>Bolivia*</b>	800-100-116	<b>Mexico</b>	01-800-087-1080
<b>Chile</b>	(56 2) 2484-3400	<b>Mexico City</b>	(52 55) 1323-2052
<b>Colombia</b>	018000-915235	<b>Nicaragua*</b>	00-1-800-226-0368
<b>Bogota</b>	(57 1) 523-5000	<b>Panama*</b>	00-800-052-1376
<b>Costa Rica</b>	800-377-6627	<b>Paraguay</b>	009-800-521-0019
<b>Dominican Republic*</b>	1-888-760-0068	<b>Peru</b>	0800-10126
<b>Ecuador*</b>	1-800-000-044	<b>Lima</b>	(51 1) 418-0210
<b>El Salvador*</b>	800-6570	<b>Uruguay</b>	00040-5210067
<b>Guatemala*</b>	1-800-835-0358	<b>Venezuela</b>	(58 212) 240-1111

\* Contact your local phone company to call this toll-free number from a mobile phone.

\*\* Dial the first 7 digits, wait for a message, then enter the code.

If your country does not appear on the list, contact your nearest Epson sales office. Toll or long distance charges may apply.

# Need paper and ink?

Ensure peak performance and brilliant results with Genuine Epson Ink and specialty papers, engineered specifically for Epson printers. You can purchase them from an Epson authorized reseller. To find the nearest one, visit [www.epson.com.jm](http://www.epson.com.jm) or contact Epson as described in "Any questions?" on this sheet.



DESIGNED *for* EXCELLENCE™  
Epson printers, ink and specialty papers.

## PM-525 replacement ink cartridge

Part number	Description
376	Color Ink Cartridge



EPSON is a registered trademark, EPSON Exceed Your Vision is a registered logomark, and Epson Connect is a trademark of Seiko Epson Corporation. Designed for Excellence is a trademark of Epson America, Inc.

Mac, iPhone, iPad, and iPod touch are trademarks of Apple Inc., registered in the U.S. and other countries.

Android, Google Cloud Print, Chromebook, and Google Play are trademarks of Google Inc.

Wi-Fi Direct® is a registered trademark of Wi-Fi Alliance®.

General Notice: Other product names used herein are for identification purposes only and may be trademarks of their respective owners. Epson disclaims any and all rights in those marks.

This information is subject to change without notice.

© 2017 Epson America, Inc., 1/17