

Expand your paper-handling and finishing options



Expand your device's input and paper-handling capabilities by adding one or more compatible input trays. Let high-volume print jobs handle themselves and spend less time loading and reloading paper. Automatically sort the output by type or user with a multi-bin mailbox accessory. Print professional finished reports or presentations quickly and effortlessly with a stapler/stacker accessory. Efficiently print stacks of postcards for office mailings or marketing campaigns with a paper feeder that has adjustable paper guides.



HP LaserJet portfolio

Paper handling and finishing options guide | Contractual



Input accessories - HP A3 LaserJet

Small work team

The following accessories are compatible with the HP LaserJet MFP M425 and M426 series.



250-sheet media tray

Product number	X0R64A
Input capacity	Up to 250 sheets
Input media sizes	A3, A4, A5, B4, B5, oficio 216 x 340 mm, 8K, 16K
Input custom media sizes	5.8 x 7.12 to 11.7 x 17.0 in (148 x 182 to 297 x 432 mm)
Input media types	Plain; mid-weight; light; HP LaserJet; colored; pre-printed; recycled; intermediate; letterhead; pre-punched
Input media weights	16 to 29 lb (60 to 110 g/m ²)
Dimensions (width x depth x height)	22 x 21.2 x 3.8 in (560 x 539.7 x 97.2 mm)
Weight	17.2 lb (7.8 kg)



100-sheet reverse automatic document feeder

Product number	X0R65A
Input capacity	Up to 100 sheets
Input media sizes	A3, A4, A5, B4, 11 x 17 cm, statement
Input custom media sizes	4.1 x 5.8 to 11.7 x 16.5 in (105 x 148 to 297 x 420 mm)
Input media weights	16 to 34 lb (60 to 128 g/m ²)
Dimensions (width x depth x height)	21.8 x 19.3 x 3.7 in (554.6 x 491 x 94.9 mm)
Weight	11.46 lb (5.2 kg)

The following accessory is compatible with the HP LaserJet MFP M42523/42525dn, M42623/42625dn, M437/438/439dn,¹ M437/438/439nda,¹ M440/442dn,¹ and M440/443nda¹.



250-sheet paper tray/stand

Product number	58D79A
Input capacity	Up to 250 sheets
Input custom media sizes	148 x 182 x 297 x 432 mm
Dimensions (width x depth x height)	683.3 x 741.1 x 654.5 mm
Weight	62.96 lb (28.56 kg)

Workgroup

The following accessories are compatible with HP LaserJet Managed MFP E724 and E725 series, and HP Color LaserJet Managed MFP E782 and E783 series.



Cabinet

Product number	Y1G17A
Dimensions (width x depth x height)	22.2 x 24 x 10.4 in (563 x 610 x 264 mm)
Weight	24.34 lb (11 kg)



Dual cassette feeder

Product number	Y1F97A
Input capacity	2 x up to 520 sheets
Input media sizes	Letter, legal, executive, statement, oficio 8.5 x 13 in, 11 x 17 in; A3, A4, A5, RA4, SRA4, B4 (JIS), B5 (JIS), oficio 216 x 340 mm, 8K, 16K
Input custom media sizes	5.5 x 8.3 to 11.7 x 17 in (139.7 x 210 to 297 x 432 mm)
Input media types	Bond, colored, HP EcoFFICIENT, letterhead, plain, pre-printed, prepunched, recycled, light 60-74 g, HP Matte 90 g, HP Matte 105 g, HP Matte 120 g, mid-weight 96-110 g, heavy 111-130 g, HP Matte 150 g, extra-heavy 131-175 g, HP Matte 200 g, cardstock 176-220 g, mid-weight glossy 96-110 g, ² HP Soft Gloss 120 g, HP Glossy 120 g, ² heavy glossy 111-130 g, ² HP Glossy 150 g, ² extra-heavy glossy 131-175 g ²
Input media weights	16 to 58 lb (60 to 220 g/m ²)
Dimensions (width x depth x height)	22.2 x 24 x 10.4 in (565 x 610 x 265 mm)
Weight	44.1 lb (20 kg)



Tray heater³

Product number	110V: Y1G22A #BGJ 220V: Y1G22A #B19
Dimensions (width x depth x height)	16.2 x 4.1 x 0.4 in (411.5 x 104 x 10 mm)
Weight	0.62 lb (0.3 kg)

The following accessories are compatible with HP LaserJet Managed MFP E731, E730 series and HP Color LaserJet Managed MFP E786 and E785 series.



2 x 520-sheet paper tray/stand

Product number	6GW46A
Input capacity	2 x up to 520 sheets
Input media sizes	Letter, legal, executive, statement, oficio 8.5 x 13 in, 11 x 17 in, A3, A4, A5, RA4, SRA4, B4 (JIS), B5 (JIS), oficio 216 x 340 mm, 8K, 16K
Input custom media sizes	5.5 x 8.3 to 11.7 x 17 in (139.7 x 210 to 297 x 432 mm)
Input media types	Plain/thin/bond/hole punched/pre-printed/recycled/thin cardstock/letterhead/thick/cotton/colored/archive/heavyweight/extra heavyweight/thin glossy (DCF) ²
Input media weights	16 to 58 lb (60 to 220 g/m ²)
Dimensions (width x depth x height)	22.3 x 24.8 x 10.4 in (566 x 630 x 265 mm)
Weight	44.86 lb (20.35 kg)



Stand

Product number	6GW54A
Dimensions (width x depth x height)	22.28 x 24.8 x 10.48 in (566 x 630 x 266.3 mm)
Weight	29.32 lb (13.3 kg)



Tray heater³

Product number	110V: Y1G22A #BGJ 220V: Y1G22A #B19
Dimensions (width x depth x height)	16.2 x 4.1 x 0.4 in (411.5 x 104 x 10 mm)
Weight	0.62 lb (0.3 kg)

The following accessory is compatible with HP LaserJet Managed MFP E725 series and HP Color LaserJet Managed MFP E783 series.



High-capacity input tray

Product number	Y1F99A
Input capacity	Up to 2,000 sheets
Input media sizes	Letter; A4



High-capacity input tray (continued)

Input media types	Bond, colored, HP EcoFFICIENT, letterhead, plain, pre-printed, pre-punched, recycled, light 60-74 g, HP Matte 90 g, HP Matte 105 g, HP Matte 120 g, mid-weight 96-110 g, ² heavy 111-130 g, ² HP Matte 150 g, ² extra heavy 131-175 g ²
Input media weights	16 to 58 lb (60 to 220 g/m ²)
Dimensions (width x depth x height)	22.2 x 24 x 10.4 in (563 x 610 x 264 mm)
Weight	62.48 lb (28.3 kg)

The following accessory is compatible with HP LaserJet Managed MFP E731 series and HP Color LaserJet Managed MFP E786 series.

2,000-sheet high-capacity paper tray/stand



Product number	6GW48A
Input capacity	Up to 2,000 sheets
Input media sizes	Letter; A4
Input media types	Plain/thin/bond/hole punched/pre-printed/recycled/thin cardstock/letterhead/thick/cotton/colored/archive/heavyweight/extra heavyweight
Input media weights	16 to 58 lb (60 to 220g/m ²)
Dimensions (width x depth x height)	22.3 x 24.8 x 10.4 in (566 x 630 x 265 mm)
Weight	54.89 lb (24.9 kg)

The following accessories are compatible with the HP Color LaserJet Managed E752 series.

1 x 550-sheet paper tray



Product number	T3V27A
Input capacity	Up to 550 sheets
Input media sizes	5.8 x 5.8 to 12.6 x 18 in (148 x 148 to 320 x 457.2 mm)
Input media types	Cut sheet paper, labels, glossy paper, glossy film, and transparency
Input media weights	16 to 68 lb (60 to 256 g/m ²)
Dimensions (width x depth x height)	21.89 x 22.99 x 5.08 in (556 x 584 x 129 mm)
Weight	22.5 lb (10.2 kg)

The following accessories are compatible with the HP Color LaserJet Managed E752 series (continued).



Stand

Product number	T3V28A
Dimensions (width x depth x height)	38.82 x 25.94 x 12.83 in (986 x 659 x 326 mm)
Weight	53.4 lb (24.2 kg)

2 x 550-sheet input tray and stand



Product number	T3V29A
Input capacity	Up to 1,100 sheets
Input media sizes	5.8 x 5.8 to 12.6 x 18 in (148 x 148 to 320 x 457.2 mm)
Input media types	Cut sheet paper, labels, glossy paper, glossy film, and transparency
Input media weights	16 to 68 lb (60 to 256 g/m ²)
Dimensions (width x depth x height)	38.82 x 25.94 x 12.83 in (986 x 659 x 326 mm)
Weight	62 lb (28.1 kg)

High-capacity input tray and stand



Product number	T3V30A
Input capacity	Up to 2,700 sheets
Input media sizes	Letter; A4
Input custom media sizes	Not supported
Input media types	Cut sheet paper, labels, glossy paper, glossy film, and transparency
Input media weights	16 to 68 lb (60 to 256 g/m ²)
Dimensions (width x depth x height)	38.82 x 25.94 x 12.83 in (986 x 659 x 326 mm)
Weight	73.7 lb (33.4 kg)

The following accessories are compatible with the HP LaserJet Managed MFP M725 series.

1 x 500-sheet feeder and tray assembly



Product number	CF239A
Input capacity	Up to 500 sheets
Input custom media sizes	5.8 x 8.3 to 11.7 x 17 in (148 x 210 to 297 x 432 mm)
Input media types	Paper (color, letterhead, light, plain, pre-printed, pre-punched, recycled, rough, tough paper), bond, cardstock, envelope, labels, transparency, vellum
Input media weights	16 to 32 lb (60 to 120 g/m ²)
Dimensions (width x depth x height)	21.4 x 23.1 x 4 in (543 x 586 x 128 mm)
Weight	25 lb (11.4 kg)

1 x 500-sheet feeder, cabinet, and stand



Product number	CF243A
Input capacity	Up to 500 sheets
Input custom media sizes	5.8 x 8.3 to 11.7 x 17 in (148 x 210 to 297 x 432 mm)
Input media types	Paper (color, letterhead, light, plain, pre-printed, pre-punched, recycled, rough, tough paper), bond, cardstock, envelope, labels, transparency, vellum
Input media weights	16 to 32 lb (60 to 120 g/m ²)
Dimensions (width x depth x height)	21.4 x 23.1 x 16.3 in (543 x 586 x 415 mm)
Weight	43 lb (19.5 kg)

3 x 500-sheet feeder and stand



Product number	CF242A
Input capacity	Up to 1,500 sheets
Input media sizes	Letter, legal, 11 x 17 in; A4, A3
Input custom media sizes	5.5 x 8.3 to 11.7 x 17 in (139.7 x 210 to 297 x 432 mm)
Input media types	Paper (color, letterhead, light, plain, pre-printed, pre-punched, recycled, rough, tough paper), bond
Input media weights	16 to 32 lb (60 to 120 g/m ²)
Dimensions (width x depth x height)	21.4 x 23.1 x 16.3 in (543 x 586 x 415 mm)
Weight	65 lb (29.8 kg)

The following accessories are compatible with the HP LaserJet Managed MFP M725 series (continued).



High-capacity input tray and stand

Product number	CF245A
Input capacity	Up to 3,500 sheets
Input media sizes	Letter, legal, 11 x 17 in; A4, A3
Input custom media sizes	5.5 x 8.3 to 11.7 x 17 in (139.7 x 210 to 297 x 432 mm)
Input media types	Paper (color, letterhead, light, plain, pre-printed, pre-punched, recycled, rough, tough paper), bond
Input media weights	16 to 32 lb (60 to 120 g/m ²)
Dimensions (width x depth x height)	29.5 x 25.8 x 16.5 in (750 x 655 x 420 mm)
Weight	84.5 lb (38.4 kg)

The following accessories are compatible with the HP Color LaserJet Managed MFP M775 series.



1 x 500-sheet feeder and tray assembly

Product number	CE860A
Input capacity	Up to 500 sheets
Input media sizes	Letter, letter-R, executive, legal, 8.5 x 13 in, 11 x 17 in; A3, A4, A5, oficio 216 x 340 mm
Input custom media sizes	5.8 x 8.5 to 11.7 x 17 in (148 x 210 to 297 x 432 mm)
Input media types	Paper (plain, light, bond, recycled, mid-weight, heavy, extra-heavy, mid-weight glossy, heavy glossy, extra-heavy glossy, cardstock, card glossy), HP Matte, HP Soft Gloss, HP Glossy, color transparency, labels, letterhead, envelope, pre-printed, pre-punched, colored, rough, HP Tough Paper, opaque film, user-defined
Input media weights	16 to 32 lb (60 to 120 g/m ²)
Dimensions (width x depth x height)	21.4 x 22.1 x 5.1 in (546 x 562 x 132 mm)
Weight	25.1 lb (11.4 kg)

The following accessories are compatible with the HP Color LaserJet Managed MFP M775 series (continued).

1 x 500-sheet feeder, cabinet, and stand



Product number	CE792A
Input capacity	Up to 500 sheets
Input media sizes	Letter, letter-R, executive, legal, 8.5 x 13 in, 11 x 17 in; A3, A4, A5, oficio 216 x 340 mm
Input custom media sizes	5.8 x 8.5 to 11.7 x 17 in (148 x 210 to 297 x 432 mm)
Input media types	Paper (plain, light, bond, recycled, mid-weight, heavy, extra-heavy, mid-weight glossy, heavy glossy, extra-heavy glossy, cardstock, card glossy), HP Matte, HP Soft Gloss, HP Glossy, color transparency, labels, letterhead, envelope, pre-printed, pre-punched, colored, rough, HP Tough Paper, opaque film, user-defined
Input media weights	16 to 32 lb (60 to 120 g/m ²)
Dimensions (width x depth x height)	29.3 x 26.3 x 17.3 in (745 x 668 x 439 mm)
Weight	43 lb (19.5 kg)

3 x 500-sheet feeder and stand



Product number	CE725A
Input capacity	Up to 1,500 sheets
Input media sizes	Letter, letter-R, executive, legal, 8.5 x 13 in, 11 x 17 in; A3, A4, A5, oficio 216 x 340 mm
Input custom media sizes	5.8 x 8.5 to 11.7 x 17 in (148 x 210 to 297 x 432 mm)
Input media types	Paper (plain, light, bond, recycled, mid-weight, heavy, extra-heavy, mid-weight glossy, heavy glossy, extra-heavy glossy, cardstock, card glossy), HP Matte, HP Soft Gloss, HP Glossy, color transparency, labels, letterhead, envelope, pre-printed, pre-punched, colored, rough, HP Tough Paper, opaque film, user-defined
Input media weights	16 to 32 lb (60 to 120 g/m ²)
Dimensions (width x depth x height)	38.2 x 36.2 x 22.7 in (971 x 920 x 578 mm)
Weight	67.3 lb (30.6 kg)

The following accessories are compatible with the HP Color LaserJet Managed MFP M775 series (continued).

High-capacity input tray and stand



Product number	CF305A
Input capacity	Up to 3,500 sheets
Input custom media sizes	Letter; A4
Input media types	Paper (plain, light, bond, recycled, mid-weight, heavy, extra-heavy, mid-weight glossy, heavy glossy, extra-heavy glossy, cardstock, card glossy), HP Matte, HP Soft Gloss, HP Glossy, color transparency, labels, letterhead, envelope, pre-printed, pre-punched, colored, rough, HP Tough Paper, opaque film, user-defined
Input media weights	16 to 32 lb (60 to 120 g/m ²)
Dimensions (width x depth x height)	29.3 x 26.3 x 17.3 in (745 x 668 x 439 mm)
Weight	84.5 lb (38.4 kg)

Department

The following accessories are compatible with HP LaserJet Managed MFP E825 series and HP Color LaserJet Managed MFP E876 series.



Cabinet

Product number	Y1G16A
Dimensions (width x depth x height)	23.1 x 26.4 x 10.2 in (587 x 670 x 260 mm)
Weight	26.32 lb (11.9 kg)



Dual cassette feeder

Product number	Y1F98A
Input capacity	2 x up to 520 sheets
Input media sizes	Letter, legal, executive, statement, oficio 8.5 x 13 in, 11 x 17 in, 12 x 18 in; A3, A4, A5, RA3, SRA3, RA4, SRA4, B4 (JIS)
Input custom media sizes	5.5 x 7.2 to 12 x 18 in (139.7 x 182 to 305 x 457 mm)
Input media types	Bond, colored, HP EcoFFICIENT, letterhead, plain, preprinted, pre-punched, recycled, light 60-74 g, HP Matte 90 g, HP Matte 105 g, mid-weight 96-110 g, HP Matte 120 g, heavy 111-130 g, HP Matte 150 g, extra-heavy 131-175 g, HP Matte 200 g, cardstock 176-220 g, light paperboard 221-255 g, paperboard 256-300 g, mid-weight glossy 96-110 g, ² HP Glossy 120 g, ² HP Soft Gloss 120 g, ² heavy glossy 111-130 g, ² HP Glossy 150 g, ² extra-heavy glossy 131-175 g, ² HP Glossy 200 g, ² card glossy 176-220 g ²
Input media weights	16 to 80 lb (60 to 300 g/m ²)
Dimensions (width x depth x height)	23.1 x 26.4 x 10.2 in (587 x 670 x 260 mm)
Weight	63.24 lb (28.7 kg)



Tray heater³

Product number	110V: Y1G22A #BGJ 220V: Y1G22A #B19
Dimensions (width x depth x height)	16.2 x 4.1 x 0.4 in (411.5 x 104 x 10 mm)
Weight	0.62 lb (0.3 kg)

The following accessories are compatible with HP LaserJet Managed MFP E825 series and HP Color LaserJet Managed MFP E876 series (continued).



High-capacity input tray

Product number	Y1G21A
Input capacity	Up to 2,000 sheets
Input media sizes	Letter; A4
Input media types	Bond, colored, HP EcoFFICIENT, letterhead, plain, pre-printed, pre-punched, recycled, light 60-74 g, HP Matte 90 g, HP Matte 105 g, mid-weight 96-110 g, HP Matte 120 g, heavy 111-130 g, HP Matte 150 g, extra-heavy 131-175 g, HP Matte 200 g, cardstock 176-220 g, light paperboard 221-255 g, paperboard 256-300g, mid-weight glossy 96-110 g, ² HP Glossy 120 g, ² HP Soft Gloss 120 g, ² heavy glossy 111-130 g, ² HP Glossy 150 g, ² extra-heavy glossy 131-175 g, ² HP Glossy 200 g, ² card glossy 176-220 g ²
Input media weights	16 to 80 lb (60 to 300 g/m ²)
Dimensions (width x depth x height)	23.1 x 26.4 x 10.2 in (587 x 670 x 260 mm)
Weight	62.48 lb (28.3 kg)

High-capacity side input tray



Product number	Y1G20A
Input capacity	Up to 3,000 sheets
Input media sizes	Letter; A4
Input media types	Bond, colored, HP EcoFFICIENT, letterhead, plain, pre-printed, pre-punched, recycled, light 60-74 g, HP Matte 90 g, HP Matte 105 g, mid-weight 96-110 g, HP Matte 120 g, heavy 111-130 g, HP Matte 150 g, extra-heavy 131-175 g, HP Matte 200 g, cardstock 176-220 g, light paperboard 221-255 g, paperboard 256-300g, mid-weight glossy 96-110 g, ² HP Glossy 120 g, ² HP Soft Gloss 120 g, ² heavy glossy 111-130 g, ² HP Glossy 150 g, ² extra-heavy glossy 131-175 g, ² HP Glossy 200 g, ² card glossy 176-220 g ²
Input media weights	16 to 80 lb (60 to 300 g/m ²)
Dimensions (width x depth x height)	14.4 x 21 x 16.1 in (366 x 533 x 409 mm)
Weight	44.22 lb (20.1 kg)

The following accessories are compatible with HP LaserJet Managed MFP E826 series and HP Color LaserJet Managed MFP E877 series.



Stand

Product number	6GW53A
Dimensions (width x depth x height)	23.03 x 27.35 x 10.46 in (585 x 694.6 x 265.6 mm)
Weight	33.29 lb (15.1 kg)

2 x 520 sheet paper tray/stand



Product number	6GW47A
Input capacity	2 x up to 520 sheets
Input media sizes	Letter, legal, executive, statement, oficio 8.5 x 13 in, 11 x 17 in, 12 x 18 in, A3, A4, A5, RA3, SRA3, RA4, SRA4, B4 (JIS), B5 (JIS), oficio 216 x 340 mm, 8K, 16K
Input custom media sizes	5.5 x 7.2 to 12.6 x 18 in (139.7 x 182 to 320 x 457 mm)
Input media types	Plain, thin, thick, heavyweight, extra heavyweight, cotton, colored, pre-printed, recycled, bond, archive, letterhead, hole punched, thin cardstock, thick cardstock, heavy cardstock, extra-heavy cardstock, thin glossy (DCF), thick glossy (DCF), heavy glossy (DCF) ²
Input media weights	16 to 80 lb (60 to 300 g/m ²)
Dimensions (width x depth x height)	23 x 27.3 x 10.1 in (585 x 694.6 x 257 mm)
Weight	62.83 lb (28.5 kg)

2,000-sheet high-capacity paper tray/stand



Product number	6GW57A
Input capacity	Up to 2,000 sheets
Input media sizes	Letter; A4
Input media types	Plain, thin, thick, heavyweight, extra heavyweight, cotton, colored, pre-printed, recycled, bond, archive, letterhead, hole punched, thin cardstock, thick cardstock, heavy cardstock, extra-heavy cardstock, thin
Input media weights	16 to 80 lb (60 to 300 g/m ²)
Dimensions (width x depth x height)	23 x 27.3 x 10.1 in (585 x 694.6 x 257 mm)
Weight	63.38 lb (28.75 kg)

The following accessories are compatible with HP LaserJet Managed MFP E826 series and HP Color LaserJet Managed MFP E877 series (continued).



Tray heater³

Product number	110V: Y1G22A #BGJ 220V: Y1G22A #B19
Dimensions (width x depth x height)	16.2 x 4.1 x 0.4 in (411.5 x 104 x 10 mm)
Weight	0.62 lb (0.3 kg)



3,000-sheet high-capacity paper tray/stand

Product number	6GW56A
Input capacity	Up to 3,000 sheets
Input media sizes	Letter; A4
Input media types	Plain, thin, thick, heavyweight, extra heavyweight, cotton, colored, pre-printed, recycled, bond, archive, letterhead, hole punched, thin cardstock, thick cardstock, heavy cardstock, extra-heavy cardstock, thin glossy (DCF), thick glossy (DCF), heavy glossy (DCF) ²
Input media weights	16 to 80 lb (60 to 300 g/m ²)
Dimensions (width x depth x height)	14.3 x 21 x 16.1 in (364 x 533 x 409.3 mm)
Weight	42.55 lb (19.3 kg)

The following accessory is compatible with the HP LaserJet Managed Flow MFP M830 series.



1,500-sheet high-capacity input tray

Product number	T0F54A
Input capacity	Up to 1,500 sheets
Input custom media sizes	11 x 17 in; A3
Input media types	Plain paper, cut sheet
Input media weights	16 to 53 lb (60 to 199 g/m ²)
Dimensions (width x depth x height)	25 x 28.1 x 15.7 in (634 x 715 x 399 mm)
Weight	69 lb (31.4 kg)

The following accessory is compatible with the HP LaserJet Managed Flow MFP M830 series (continued).



High-capacity input tray and stand

Product number	C3F79A
Input capacity	Up to 3,500 sheets
Input media sizes	Letter; A4
Input custom media sizes	8.5 x 11 in (216 to 279 mm)
Input media types	Paper (bond, color, letterhead, plain, pre-printed, pre-punched, recycled, rough), cardstock, labels, transparencies
Input media weights	16 to 53 lb bond (60 to 199 g/m ²)
Dimensions (width x depth x height)	25 x 28.1 x 15.7 in (634 x 715 x 399 mm)
Weight	71 lb (32.3 kg)

The following accessory is compatible with the HP Color LaserJet Managed Flow MFP M880 series.



3 x 500-sheet feeder and stand

Product number	C1N63A
Input capacity	Up to 1,500 sheets
Input media sizes	Letter, legal, executive, 11 x 17 in, 8.5 x 13 in; A3, A4, A5, B4, B5
Input custom media sizes	5.8 x 8.3 to 11.7 x 17 in (148 x 210 to 297 x 432 mm)
Input media types	Paper (bond, color, letterhead, plain, pre-printed, pre-punched, recycled, rough), cardstock, labels, transparencies
Input media weights	16 to 53 lb (60 to 199 g/m ²)
Dimensions (width x depth x height)	27.8 x 27.6 x 15.3 in (705 x 700 x 389 mm)
Weight	78.7 lb (35.8 kg)

The following accessories are compatible with the HP Color LaserJet Managed E850 series.



Stand

Product number	T3V28A
Dimensions (width x depth x height)	38.82 x 25.94 x 12.83 in (986 x 659 x 326 mm)
Weight	53.4 lb (24.2 kg)

1 x 550-sheet paper tray



Product number	T3V27A
Input capacity	Up to 550 sheets
Input custom media sizes	5.8 x 5.8 to 12.6 x 18 in (148 x 148 to 320 x 457.2 mm)
Input media types	Cut sheet paper, labels, glossy paper, glossy film, and transparency
Input media weights	16 to 68 lb (60 to 256 g/m ²)
Dimensions (width x depth x height)	21.89 x 22.99 x 5.08 in (556 x 584 x 129 mm)
Weight	22.5 lb (10.2 kg)

2 x 550-sheet input tray and stand



Product number	T3V29A
Input capacity	Up to 1,100 sheets
Input custom media sizes	5.8 x 5.8 to 12.6 x 18 in (148 x 148 to 320 x 457.2 mm)
Input media types	Cut sheet paper, labels, glossy paper, glossy film, and transparency
Input media weights	16 to 68 lb (60 to 256 g/m ²)
Dimensions (width x depth x height)	38.82 x 25.94 x 12.83 in (986 x 659 x 326 mm)
Weight	62 lb (28.1 kg)

High-capacity input tray and stand

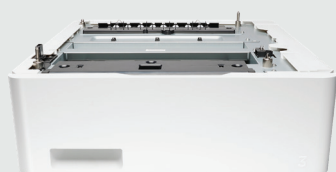


Product number	T3V30A
Input capacity	Up to 2,700 sheets
Input media sizes	Letter; A4
Input custom media sizes	Not supported
Input media types	Cut sheet paper, labels, glossy paper, glossy film, and transparency
Input media weights	16 to 68 lb (60 to 256 g/m ²)
Dimensions (width x depth x height)	38.82 x 25.94 x 12.83 in (986 x 659 x 326 mm)
Weight	73.7 lb (33.4 kg)

Input accessories - HP A4 LaserJet

Workgroup

The following accessory is compatible with the HP LaserJet Managed E40040 and MFP E42540.



1 x 550-sheet paper tray

Product number	CF404A
Input capacity	Up to 550 sheets
Input custom media sizes	3.94 x 5.83 to 8.5 x 14 in (100 x 148 to 216 x 356 mm)
Input media types	Plain (uncoated), glossy (coated), postcards, envelopes, labels and OHT are supported in tray 1. Envelopes and labels are supported in tray 2.
Input media weights	16 to 43 lb (60 to 163 g/m ² paper, up to 176 gsm postcards)
Dimensions (width x depth x height)	16.02 x 17.59 x 6.08 in (407 x 447 x 154.6 mm)
Weight	10.58 lb (4.8 kg)

The following accessory is compatible with the HP Color LaserJet Managed E45028 and MFP E47528.

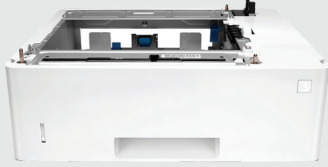


1 x 550-sheet paper tray

Product number	D9P29A
Input capacity	Up to 550 sheets
Input custom media sizes	4.13 x 5.83 to 8.5 x 14 in (105 x 148 to 216 x 356 mm)
Input media types	Paper (plain, EcoFFICIENT, light, heavy, bond, colored, letterhead, pre-printed, pre-punched, recycled, rough); envelopes; labels; transparencies
Input media weights	16 to 32 lb (60 to 120 g/m ²)
Dimensions (width x depth x height)	15 x 14.06 x 5.1 in (381 x 357 x 131 mm)
Weight	8.16 lb (3.7 kg)

The following accessories are compatible with the HP LaserJet Managed E50145 and the HP LaserJet Managed MFP E52645 series.

1 x 550-sheet paper tray



Product number	F2A72A
Input capacity	Up to 550 sheets
Input custom media sizes	7 x 10 to 8.5 x 14 in (177.8 x 254 to 216 x 356 mm)
Input media types	Cut sheet paper
Input media weights	16 to 32 lb (60 to 120 g/m ²)
Dimensions (width x depth x height)	16.46 x 14.02 x 5.12 in (418 x 356 x 130 mm)
Weight	8.86 lb (4.02 kg)



Cabinet

Product number	F2A73A
Dimensions (width x depth x height)	24.9 x 23.6 x 15 in (633 x 599 x 381 mm)
Weight	40.8 lb (18.5 kg)



Staple cartridge refill for built-in convenience stapler (MFP E52645 only)

Product number	Q7432A
Cartridge capacity	2 cartridges, 1,500 staples each

The following accessories are compatible with the HP Color LaserJet Managed E55040 series and MFP E57540 series.



Stand and cabinet

Product number	B5L51A
Dimensions (width x depth x height)	34.8 x 34.2 x 11.5 in (884.7 x 867.8 x 292.1 mm)
Weight	38 lb (17.2 kg)

The following accessories are compatible with the HP Color LaserJet Managed E55040 series and MFP E57540 series (continued).

1 x 550-sheet paper feeder



Product number	B5L34A
Input capacity	Up to 550 sheets
Input custom media sizes	4 x 6 to 8.5 x 14 in (102 x 148 to 216 x 356 mm)
Input media types	Paper (banner, brochure, inkjet, plain), photo paper (borderless, HP Premium, panoramic, plus tab), labels, cards (greeting, index), transparencies, iron-on transfers
Input media weights	16 to 32 lb (60 to 120 g/m ²)
Dimensions (width x depth x height)	18.03 x 18.31 x 5.12 in (458 x 465 x 130 mm)
Weight	12.79 lb (5.8 kg)

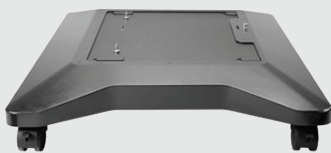
The following accessories are compatible with the HP LaserJet Managed E60155, E60165, and E60175.

550-sheet paper feeder



Product number	L0H17A
Input capacity	Up to 550 sheets
Input custom media sizes	3.90 x 5.83 to 8.5 x 14 in (99 x 148 to 216 x 356 mm)
Input media types	Paper (plain, light, bond, recycled, heavy, pre-printed, pre-punched, colored, rough), mono transparency, labels, letterhead
Input media weights	16 to 32 lb (60 to 120 g/m ²)
Dimensions (width x depth x height)	16.7 x 18.3 x 5.8 in (426 x 466 x 148 mm)
Weight	12.6 lb (5.7 kg)

Printer stand



Product number	L0H19A
Dimensions (width x depth x height)	25.5 x 29.4 x 5.7 in (648 x 748 x 144 mm)
Weight	31.4 lb (14.2 kg)

The following accessories are compatible with the HP LaserJet Managed E60155, E60165, and E60175 (continued).



2,100-sheet paper feeder

Product number	L0H18A
Input capacity	Up to 2,100 sheets
Input media sizes	Letter, legal; A4
Input media types	Paper (plain, light, bond, recycled, heavy, pre-printed, pre-punched, colored, rough), mono transparency, labels, letterhead
Input media weights	16 to 32 lb (60 to 120 g/m ²)
Dimensions (width x depth x height)	16.7 x 18.3 x 13.4 in (426 x 466 x 341 mm)
Weight	22.2 lb (10.1 kg)



Envelope feeder

Product number	L0H21A
Input capacity	Up to 75 envelopes
Input custom media sizes	3.5 x 6.3 to 7 x 10 in (90 x 148 to 178 x 254 mm)
Input media types	Envelopes, notecards
Input media weights	20 to 32 lb (75 to 120 g/m ²)
Dimensions (width x depth x height)	16.7 x 18.3 x 5.8 in (426 x 466 x 148 mm)
Weight	12.8 lb (5.8 kg)



LaserJet extension tray cover

Product number	L0H22A
Dimensions (width x depth x height)	3.6 x 16.7 x 3.6 in (91.5 x 425 x 92 mm)
Weight	0.47 lb (0.214 kg)

550-sheet paper feeder



Product number	J8J89A
Input capacity	Up to 550 sheets
Input custom media sizes	3.90 x 5.83 to 8.5 x 14 in (99 x 148 to 216 x 356 mm)
Input media types	Paper (plain, light, bond, recycled, heavy, pre-printed, pre-punched, colored, rough), mono transparency, labels, letterhead
Input media weights	16 to 32 lb (60 to 120 g/m ²)
Dimensions (width x depth x height)	20.15 x 22 x 5.8 in (512 x 558 x 148 mm)
Weight	15 lb (6.8 kg)

1 x 550-sheet paper feeder with stand and cabinet



Product number	J8J91A
Input capacity	Up to 550 sheets
Input custom media sizes	3.90 x 5.83 to 8.5 x 14 in (99 x 148 to 216 x 356 mm)
Input media types	Paper (plain, light, bond, recycled, heavy, pre-printed, pre-punched, colored, rough), mono transparency, labels, letterhead
Input media weights	16 to 32 lb (60 to 120 g/m ²)
Dimensions (width x depth x height)	26 x 25.9 x 18.8 in (660 x 658 x 478 mm)
Weight	41 lb (18.6 kg)

3 x 550-sheet paper feeder with stand



Product number	J8J93A
Input capacity	Up to 1,650 sheets
Input custom media sizes	3.90 x 5.83 to 8.5 x 14 in (99 x 148 to 216 x 356 mm)
Input media types	Paper (plain, light, bond, recycled, heavy, pre-printed, pre-punched, colored, rough), mono transparency, labels, letterhead
Input media weights	16 to 32 lb (60 to 120 g/m ²)
Dimensions (width x depth x height)	26 x 26.2 x 18.8 in (661 x 667 x 479 mm)
Weight	50 lb (22.7 kg)

The following accessories are compatible with the HP LaserJet Managed MFP E62655, MFP E62665, and MFP E62675 (continued).



1 x 550-sheet paper feeder and 2,000-sheet HCI feeder with stand

Product number	J8J92A
Input capacity	1 x 550-sheet tray: up to 550 sheets 2,000-sheet HCI tray: up to 2,000 sheets
Input custom media sizes	1 x 550-sheet tray: 3.90 x 5.83 to 8.5 x 14 in (99 x 148 to 216 x 356 mm) 2,000-sheet HCI tray: 8.27 x 11 to 8.5 x 14 in (210 x 279 to 216 x 356 mm)
Input media types	Paper (plain, light, bond, recycled, heavy, pre-printed, pre-punched, colored, rough), mono transparency, labels, letterhead
Input media weights	16 to 32 lb (60 to 120 g/m ²)
Dimensions (width x depth x height)	26 x 25.9 x 18.8 in (660 x 658 x 478 mm)
Weight	55.6 lb (25.2 kg)

Envelope feeder



Product number	J8J90A
Input capacity	Up to 75 envelopes
Input custom media sizes	3.5 x 6.3 to 7 x 10 in (90 x 148 to 178 x 254 mm)
Input media types	Envelopes, notecards
Input media weights	20 to 32 lb (75 to 120 g/m ²)
Dimensions (width x depth x height)	20.15 x 22 x 5.8 in (512 x 558 x 148 mm)
Weight	15 lb (6.8 kg)

The following accessories are compatible with the HP Color LaserJet Managed E65150, E65160, MFP E67650, and MFP E67660.



550-sheet paper feeder

Product number	P1B09A
Input capacity	Up to 550 sheets
Input custom media sizes	3.97 x 5.83 to 8.5 x 14 in (101 x 148 to 216 x 356 mm)
Input media types	Paper (plain, glossy paper, labels)
Input media weights	16 to 58 lb (60 to 220 g/m ²)
Dimensions (width x depth x height)	20.08 x 18.03 x 5.12 in (510 x 458 x 130 mm)
Weight	13.8 lb (6.3 kg)

The following accessories are compatible with the HP Color LaserJet Managed E65150, E65160, MFP E67650, and MFP E67660 (continued).



1 x 550-sheet paper feeder with stand and cabinet

Product number	P1B10A
Input capacity	Up to 550 sheets
Input custom media sizes	3.97 x 5.83 to 8.5 x 14 in (101 x 148 to 216 x 356 mm)
Input media types	Paper (plain, glossy paper, labels)
Input media weights	16 to 58 lb (60 to 220 g/m ²)
Dimensions (width x depth x height)	25.87 x 25.87 x 17.72 in (657 x 657 x 450 mm)
Weight	42.1 lb (19.1 kg)



3 x 550-sheet paper feeder with stand

Product number	P1B11A
Input capacity	Up to 1,650 sheets
Input custom media sizes	3.97 x 5.83 to 8.5 x 14 in (101 x 148 to 216 x 356 mm)
Input media types	Paper (plain, glossy paper, labels)
Input media weights	16 to 58 lb (60 to 220 g/m ²)
Dimensions (width x depth x height)	25.87 x 25.87 x 17.72 in (657 x 657 x 450 mm)
Weight	52 lb (23.6 kg)



1 x 550-sheet paper feeder and 2,000-sheet HCL feeder with stand

Product number	P1B12A
Input capacity	1 x 550-sheet tray: up to 550 sheets
	2,000-sheet HCL tray: up to 2,000 sheets
Input custom media sizes	1 x 550-sheet tray: 3.97 x 5.83 to 8.5 x 14 in (101 x 148 to 216 x 356 mm)
	2,000-sheet HCL tray: 8.27 x 11.7 to 8.5 x 14 in (210 x 297 to 216 x 356 mm)
Input media types	1 x 550-sheet tray: paper (plain, glossy paper, labels)
	2,000-sheet HCL tray: plain paper
Input media weights	16 to 58 lb (60 to 220 g/m ²)
Dimensions (width x depth x height)	25.87 x 25.87 x 17.72 in (657 x 657 x 450 mm)
Weight	53.6 lb (24.3 kg)

Finishing accessories

HP A3 LaserJet



Sort

Ideal for separating documents that don't require binding



Staple

Ideal for multi-page documents or reports



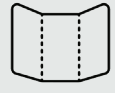
Saddle staple

Ideal for stapled booklets; a cover sheet can be added



Punch

Ideal for papers to be filed in binders



Fold

Ideal for cards (V-fold) and tri-fold brochures (C-fold)

Workgroup and department

The following accessories are compatible with the HP LaserJet Managed MFP E72425, MFP E72430, MFP E72525, MFP E72530, MFP E72535, MFP E82540, MFP E82550, MFP E82560; HP Color LaserJet Managed MFP E78223, MFP E78228, MFP E78323, MFP E78325, MFP E78330, MFP E87640, MFP E87650, and MFP E87660.

Inner finisher⁴



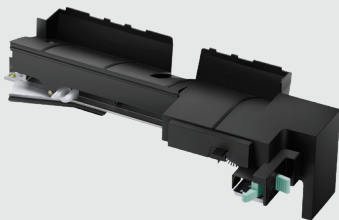
Product number	Y1G00A
Type	Top tray: stack
	Main tray: stack, sort (offset available), staple, punch (with punch accessory)
Stack capacity	Top tray: up to 50 sheets
	Main tray (finishing): up to 500 sheets
Stack media sizes	Top tray: letter, legal, executive, statement, oficio, envelopes (#9, #10, Monarch), A3, A4, A5, A6, B5 (JIS, ISO), B4 (JIS), B6, 8K, 16K, postcards (JIS), envelopes (B5, C5, C6, DL), folio, ledger
	Main tray (finishing): letter, legal, executive, statement, oficio, A3, A4, A5, B5 (JIS, ISO), B4 (JIS), RA4, SRA4, 8K, 16K, tabloid extra, folio, ledger, SRA3
Stack custom media sizes	Top tray: 3.8 x 5.8 to 11.7 x 17 in (98 x 148 to 297 x 432 mm)
	Main tray: 3.8 x 5.5 to 12 x 18 in (98 x 140 to 305 x 457 mm)

Inner finisher⁴ - continued



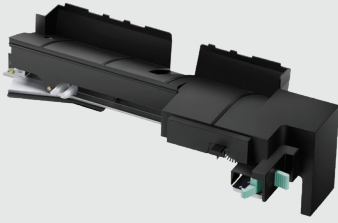
Stack media types	Top tray: plain (60~90 g/m ²), thick (91~105 g/m ²), heavyweight (106~175 g/m ²), extra heavyweight (176~216 g/m ² , 217~256 g/m ² , 257~300 g/m ² , 301~325 g/m ²), thin (60~70 g/m ²), cotton (75~90 g/m ²), colored (75~90 g/m ²), pre-printed (75~90 g/m ²), recycled (60~90 g/m ²), bond, archive, letterhead, pre-punched, thin cardstock (105~163 g/m ²), thick cardstock (170~216 g/m ²), heavy cardstock (217~256 g/m ²), extra-heavy cardstock (257~300 g/m ² , 301~325 g/m ²), thin glossy (106~169 g/m ²), thick glossy (170~216 g/m ²), envelope(75~90 g/m ²) ²
	Main tray: plain (60~90 g/m ²), thick (91~105 g/m ²), heavyweight (106~175 g/m ²), extra heavyweight (176~216 g/m ² , 217~256 g/m ²), thin (60~70 g/m ²), cotton (75~90 g/m ²), colored (75~90 g/m ²), pre-printed (75~90 g/m ²), recycled (60~90 g/m ²), bond, archive, letterhead, pre-punched, thin cardstock (105~163 g/m ²), thick cardstock (170~216 g/m ²), heavy cardstock (217~256 g/m ²), thin glossy (106~169 g/m ²), thick glossy (170~216 g/m ²), heavy glossy (217~256 g/m ²), thick envelope (91~120 g/m ²), transparency (138~146 g/m ²), labels (120~150 g/m ²) ²
Stack media weights	Top tray: 14 to 86 lb (52 to 323 g/m ²)
	Main tray: 14 to 68 lb (52 to 256 g/m ²)
Staple capacity	Up to 50 sheets; 24 lb (90 g/m ²) or less
Staple media sizes	Letter, legal, executive, oficio 8.5 x 13 in, 11 x 17 in; A4, A3, A5, B4 (JIS), B5 (JIS), 8K 270 x 390 mm, 16K 195 x 270 mm
Staple media weights	16 to 68 lb (60 to 256 g/m ²)
Staple position	Corner (single 45° or single flat), center (dual)
Staple cartridge capacity	5,000 staples
Dimensions (width x depth x height)	26 x 19.3 x 9 in (660 x 490 x 229 mm)
Weight	33 lb (14.9 kg)

2/3 hole punch module for inner finisher



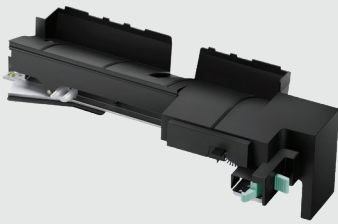
Product number	Y1G02A
Punch: media sizes	Letter, legal, executive, 11 x 17 in, oficio 8.5 x 13 in; A4, A3, A5, B4 (JIS), B5 (JIS), 8K 270 x 390 mm, 16K 195 x 270 mm
Punch: media weights	16 to 68 lb (60 to 256 g/m ²)
Dimensions (width x depth x height)	16.8 x 7.1 x 5.4 in (426.7 x 180 x 137 mm)
Weight	4.4 lb (2.0 kg)

2/4 hole punch model for inner finisher



Product number	Y1G03A
Punch: media sizes	Letter, legal, executive, 11 x 17 in, oficio 8.5 x 13 in; A4, A3, A5, B4 (JIS), B5 (JIS), 8K 270 x 390 mm, 16K 195 x 270 mm
Punch: media weights	16 to 68 lb (60 to 256 g/m ²)
Dimensions (width x depth x height)	16.8 x 7.1 x 5.4 in (426.7 x 180 x 137 mm)
Weight	4.4 lb (2.0 kg)

Swedish punch model for inner finisher



Product number	Y1G04A
Punch: media sizes	Letter, legal, executive, 11 x 17 in, oficio 8.5 x 13 in; A4, A3, A5, B4 (JIS), B5 (JIS), 8K 270 x 390 mm, 16K 195 x 270 mm
Punch: media weights	16 to 68 lb (60 to 256 g/m ²)
Dimensions (width x depth x height)	16.8 x 7.1 x 5.4 in (426.7 x 180 x 137 mm)
Weight	4.4 lb (2.0 kg)

The following accessories are compatible with HP LaserJet Managed MFP E725 and E825 series, and HP Color LaserJet Managed MFP E783 and E876 series.

Booklet finisher⁵

Product number	Y1G07A
Type	Top tray: stack
	Main tray: sort, stack, staple, punch Booklet tray: saddle staple, C-fold, V-fold
Stack capacity	Top tray: up to 250 sheets
	Main (finishing) tray: up to 2,000 sheets
	Booklet tray: approximately 5 sets of 25 sheets each
Stack media sizes	Top tray: letter, legal, executive, statement, oficio 8.5 x 13 in, 4 x 6 in, 5 x 7 in, 5 x 8 in, 11 x 17 in, 12 x 18 in, envelopes (#9, #10, Monarch); A3, A4, A5, A6, B4 (JIS), B5 (JIS), B6 (JIS), SRA3, RA4, SRA4, 10 x 15 cm, oficio 216 x 340 mm, 8K 270 x 390 mm, 16K 195 x 270 mm, 8K 260 x 368 mm, 16K 184 x 260 mm, 8K 273 x 394 mm, 16K 197 x 273 mm, postcards (JIS single and double), envelopes (B5, C5, C6, DL)
	Main tray: letter, legal, executive, statement, oficio 8.5 x 13 in, 11 x 17 in, 12 x 18 in; A4, A3, A5, B4 (JIS), B5 (JIS), SRA3, 8K 270 x 390 mm, 16K 195 x 270 mm
	Booklet tray: letter, legal, executive, 11 x 17 in, 12 x 18 in, oficio 8.5 x 13 in; A4, A3, B4 (JIS), B5 (JIS), 8K 270 x 390 mm, 16K 195 x 270 mm
Stack media types	Top tray: bond, color transparency, colored, envelope, heavy envelope, HP EcoFFICIENT, labels, letterhead, plain, pre-printed, pre-punched, recycled, user type 1-10, light 60-74 g, HP Matte 90 g, HP Matte 105 g, mid-weight 96-110 g, heavy 111-130 g, HP Matte 120 g, extra heavy 131-175 g, HP Matte 150 g, cardstock 176-220 g, HP Matte 200 g, light paperboard 221-255 g, paperboard 256-300 g, mid-weight glossy 96-110 g, ² HP Glossy 120 g, ² HP Soft Gloss 120 g, ² heavy glossy 111-130 g, ² HP Glossy 150 g, ² extra-heavy glossy 131-175 g, ² card glossy 176-220 g, ² HP Glossy 200 g ²
	Main tray: bond, color transparency, colored, HP EcoFFICIENT, letterhead, plain, pre-printed, pre-punched, recycled, user type 1-10, light 60-74 g, HP Matte 90 g, HP Matte 105 g, mid-weight 96-110 g, heavy 111-130 g, HP Matte 120 g, extra heavy 131-175 g, HP Matte 150 g, cardstock 176-220 g, HP Matte 200 g, light paperboard 221-255 g, paperboard 256-300 g, heavy paperboard, mid-weight glossy 96-110 g, ² HP Glossy 120 g, ² HP Soft Gloss 120 g, ² heavy glossy 111-130 g, ² HP Glossy 150 g, ² extra-heavy glossy 131-175 g, ² card glossy 176-220 g, ² HP Glossy 200 g ²
	Booklet tray: bond, colored, HP EcoFFICIENT, letterhead, plain, pre-printed, pre-punched, recycled, user type 1-10, light 60-74 g, HP Matte 90 g, HP Matte 105 g, mid-weight 96-110 g, heavy 111-130 g, HP Matte 120 g, extra heavy 131-175 g, HP Matte 150 g, cardstock 176-220 g, HP Matte 200 g, mid-weight glossy 96-110 g, ² HP Glossy 120 g, ² HP Soft Gloss 120 g, ² heavy glossy 111-130 g, ² HP Glossy 150 g, ² extra-heavy glossy 131-175 g, ² card glossy 176-220 g, ² HP Glossy 200 g ²



Booklet finisher⁵ (continued)

Media weights	16 to 93 lb (60 to 350 g/m ²)
Staple capacity	Staple: up to 65 sheets; 24 lb (90 g/m ²) or less Fold and staple: up to 25 sheets; 24 lb (90 g/m ²) or less Fold and staple with cover: 1 cover page and 19 plain sheets; 24 lb (90 g/m ²) or less
Staple media sizes	Letter, legal, executive, oficio 8.5 x 13 in, 11 x 17 in; A4, A3, A5, B4 (JIS), B5 (JIS), 8K 270 x 390 mm, 16K 195 x 270 mm
Staple media weights	14 to 68 lb (52 to 256 g/m ²)
Staple positions	Corner (single 45° or single flat), center (dual)
Staple cartridge capacity	5,000 staples
Punch types	NA 2/3, EU 2/4 Swedish
Punch media sizes	Letter, legal, executive, statement, oficio 8.5 x 13 in, 11 x 17 in; A4, A3, A5, B4 (JIS), B5 (JIS), 8K 270 x 390 mm, 16K 195 x 270 mm
Punch media weights	14 to 80 lb (52 to 300 g/m ²)
Booklet finisher capacity	Booklet: up to 25 sheets; 21 lb (80 g/m ²) or less
	C-fold: up to 3 sheets; 14 to 24 lb (52 to 90 g/m ²)
	V-fold: up to 5 sheets; 21 lb (80 g/m ²) or less
Booklet finisher media sizes	Booklet: letter, legal, executive, oficio 8.5 x 13 in, 11 x 17 in, 12 x 18 in; A4, A3, B4 (JIS), B5 (JIS), 8K 270 x 390 mm, 16K 195 x 270 mm
	C-fold: Letter; A4
	V-fold: letter, legal, executive, oficio 8.5 x 13 in, 11 x 17 in, 12 x 18 in; A4, A3, B4 (JIS), B5 (JIS), 8K 270 x 390 mm, 16K 195 x 270 mm
Booklet finisher media types	Booklet and V-fold: bond, colored, HP EcoFFICIENT, letterhead, plain, pre-printed, pre-punched, recycled, user type 1-10, light 60-74 g, HP Matte 90 g, HP Matte 105 g, mid-weight 96-110 g, heavy 111-130 g, HP Matte 120 g, extra heavy 131-175 g, HP Matte 150 g, cardstock 176-220 g, HP Matte 200 g, mid-weight glossy 96-110 g, ² HP Glossy 120 g, ² HP Soft Gloss 120 g, ² heavy glossy 111-130 g, ² HP Glossy 150 g, ² extra-heavy glossy 131-175 g, ² card glossy 176-220 g, ² HP Glossy 200 g ²
	C-fold: colored, HP EcoFFICIENT, letterhead, plain, pre-printed, pre-punched, recycled, user type 1-10, light 60-74 g, HP Matte 90 g
Booklet finisher media weights	16 to 32 lb (60 to 120 g/m ²); cover sheet: up to 80 lb (300 g/m ²)
Booklet finisher folding	C-fold inward top, C-fold inward bottom, C-fold outward bottom, V-fold inward top
Dimensions (width x depth x height)	23.8 x 23.3 x 40 in (605 x 592 x 1015 mm)
Weight	136.4 lb (62 kg)



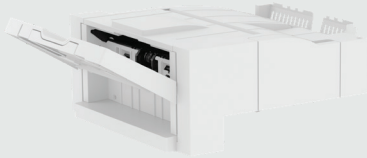
Stapler/stacker finisher⁴



Product number	Y1G18A
Type	Top tray: stack
	Main tray: sort, stack, staple, punch
Stacker capacity	Top tray: up to 250 sheets
	Main (finishing) tray: up to 3,000 sheets
Stacker media sizes	Top tray: letter, legal, executive, statement, oficio, envelopes (#9, #10, Monarch), A3, A4, A5, A6, B5 (JIS, ISO), B4 (JIS), B6, RA4, SRA4, 8K, 16K, postcards (JIS), envelopes (B5, C5, C6, DL), folio, ledger
	Main tray (finishing): letter, legal, executive, statement, statement, oficio, A3, A4, A5, B5 (JIS, ISO), B4 (JIS), 8K, 16K, tabloid extra, folio, ledger, SRA3
Stacker custom media sizes	Top tray: 3.9 x 5.5 to 13 x 47.2 in (98 x 140 to 330 x 1200 mm)
Stacker media types	Top tray: plain (60~90 g/m ²), thick (91~105 g/m ²), heavyweight (106~175 g/m ²), extra heavyweight (176~216 g/m ² , 217~256 g/m ² , 257~300 g/m ²), thin (60~70 g/m ²), cotton (75~90 g/m ²), colored (75~90 g/m ²), pre-printed (75~90 g/m ²), recycled (60~90 g/m ²), bond, archive, letterhead, pre-punched, thin cardstock (105~163 g/m ²), thick cardstock (170~216 g/m ²), heavy cardstock (217~256 g/m ²), extra-heavy cardstock d(257~300 g/m ²), thin glossy (106~169 g/m ²), thick glossy (170~216 g/m ²), envelope (75~90 g/m ²), thick envelope (91~120 gsm), transparency (138~146 gsm) ²
	Main tray: plain (60~90 g/m ²), thick (91~105 g/m ²), heavyweight (106~175 g/m ²), extra heavyweight (176~216 g/m ² , 217~256 g/m ² , 257~300 g/m ²), thin (60~70 g/m ²), cotton (75~90 g/m ²), colored (75~90 g/m ²), pre-printed (75~90 g/m ²), recycled (60~90 g/m ²), bond, archive, letterhead, pre-punched, thin cardstock (105~163 g/m ²), thick cardstock (170~216 g/m ²), heavy cardstock (217~256 g/m ²), extra-heavy cardstock (257~300 g/m ²), thin glossy (106~169 g/m ²), thick glossy (170~216 g/m ²), transparency (138~146 gsm) ²
Stacker media weights	16 to 93 lb (60 to 350 g/m ²)
Staple capacity	Up to 65 sheets: 24 lb (90 g/m ²) or less
Staple media sizes	Letter, legal, executive, oficio 8.5 x 13 in, 11 x 17 in; A4, A3, A5, B4 (JIS), B5 (JIS), 8K 270 x 390 mm, 16K 195 x 270 mm
Staple media weights	16 to 68 lb (60 to 256 g/m ²)
Staple position	Corner (single 45° or single flat), center (dual)
Staple cartridge capacity	5,000 staples
Dimensions (width x depth x height)	25 x 23.3 x 40 in (635 x 592 x 1016 mm)
Weight	88 lb (39.9 kg)

The following accessories are compatible with HP LaserJet Managed MFP E826, E731, E730 series, and HP Color LaserJet Managed MFP E877, E786 and E785 series.*

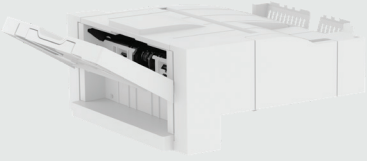
Inner finisher⁴



Product number	6GW49A
Type	Top tray: stack
	Main tray (finishing): sort (offset available), stacker (offset available), staple
Stack capacity	Top tray: up to 50 sheets
	Main tray (finishing): up to 500 sheets
Stack media sizes	Top tray: letter, legal, executive, statement, oficio, envelopes (#9, #10, Monarch), A3, A4, A5, A6, B5 (JIS, ISO), B4 (JIS), B6, 8K, 16K, postcards (JIS), envelopes (B5, C5, C6, DL), folio, ledger
	Main tray (finishing): letter, legal, executive, statement, oficio, A3, A4, A5, B5 (JIS, ISO), B4 (JIS), RA4, SRA4, 8K, 16K, tabloid extra, folio, ledger, SRA3
Stack custom media sizes	Top tray : 3.8 x 5.5 to 11.7 x 17 in (98 x 140 to 297 x 432 mm)
	Main tray : 3.8 x 5.5 to 12 x 18 in (98 x 140 to 305 x 457 mm)
Stack media types	Top tray: plain (60~90 g/m ²), thick (91~105 g/m ²), heavyweight (106~175 g/m ²), extra heavyweight (176~216 g/m ² , 217~256 g/m ² , 257~300 g/m ² , 301~325 g/m ²), thin (60~70 g/m ²), cotton (75~90 g/m ²), colored (75~90 g/m ²), pre-printed (75~90 g/m ²), recycled (60~90 g/m ²), bond, archive, letterhead, pre-punched, thin cardstock (105~163 g/m ²), thick cardstock (170~216 g/m ²), heavy cardstock (217~256 g/m ²), extra-heavy cardstock (257~300 g/m ² , 301~325 g/m ²), thin glossy (106~169 g/m ²), thick glossy (170~216 g/m ²), envelope(75~90 g/m ²) ²
	Main tray: plain (60~90 g/m ²), thick (91~105 g/m ²), heavyweight (106~175 g/m ²), extra heavyweight (176~216 g/m ² , 217~256 g/m ²), thin (60~70 g/m ²), cotton (75~90 g/m ²), colored (75~90 g/m ²), pre-printed (75~90 g/m ²), recycled (60~90 g/m ²), bond, archive, letterhead, pre-punched, thin cardstock (105~163 g/m ²), thick cardstock (170~216 g/m ²), heavy cardstock (217~256 g/m ²), thin glossy (106~169 g/m ²), thick glossy (170~216 g/m ²), heavy glossy (217~256 g/m ²), thick envelope (91~120 g/m ²), transparency (138~146 g/m ²), labels (120~150 g/m ²) ²
Stack media weights	Top tray: 14 to 86 lb (52 to 320 g/m ²)
	Main tray: 16 to 68 lb (60 to 256 g/m ²)
Staple capacity	50 sheets; 24lb (90 g/m ²) or less
Staple media sizes	Letter, legal, executive, oficio 8.5 x 13 in, 11 x 17 in ; A4, A3, B4 (JIS), 8K 270 x 390 mm, 16K 195 x 270 mm

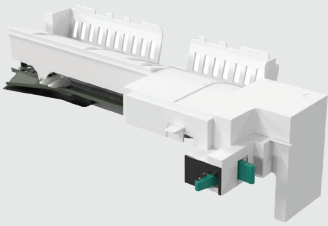
*inner finisher is not compatible with 70ppm (E877/E826 series)

Inner finisher⁴ (continued)



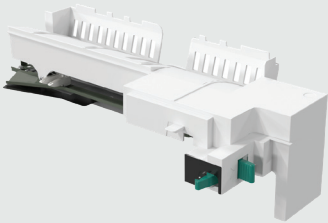
Staple media weights	16 to 68 lb (60 to 256 g/m ²)
Staple position	Corner (single 45° or single flat), center (dual)
Staple cartridge capacity	5,000 staples
Dimensions (width x depth x height)	25.83 x 19.33 x 9.1 in (656 x 490.8 x 230.9 mm)
Weight	33.07 lb (15 kg)

2/3 hole punch module for inner finisher



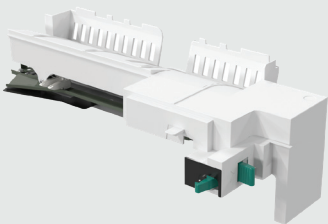
Product number	155P7A
Punch: media sizes	Letter, legal, executive, 11 x 17 in, oficio 8.5 x 13 in ; A4, A3, A5, B4 (JIS), 8K 270 x 390 mm, 16K 195 x 270 mm
Punch: media weights	16 to 68 lb (60 to 256 g/m ²)
Dimensions (width x depth x height)	16.79 x 7.06 x 5.41 in (426.3 x 179.3 x 137.4 mm)
Weight	4.3 lb (1.95 kg)

2/4 hole punch model for inner finisher

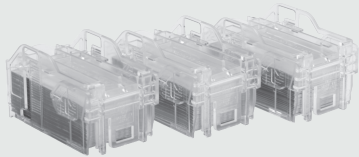


Product number	155P8A
Punch: media sizes	Letter, legal, executive, 11 x 17 in, oficio 8.5 x 13 in ; A4, A3, A5, B4 (JIS), 8K 270 x 390 mm, 16K 195 x 270 mm
Punch: media weights	16 to 68 lb (60 to 256 g/m ²)
Dimensions (width x depth x height)	16.79 x 7.06 x 5.41 in (426.3 x 179.3 x 137.4 mm)
Weight	4.3 lb (1.95 kg)

Swedish punch model for inner finisher



Product number	155P9A
Punch: media sizes	Letter, legal, executive, 11 x 17 in, oficio 8.5 x 13 in ; A4, A3, A5, B4 (JIS), 8K 270 x 390 mm, 16K 195 x 270 mm
Punch: media weights	16 to 68 lb (60 to 256 g/m ²)
Dimensions (width x depth x height)	16.79 x 7.06 x 5.41 in (426.3 x 179.3 x 137.4 mm)
Weight	4.3 lb (1.95 kg)

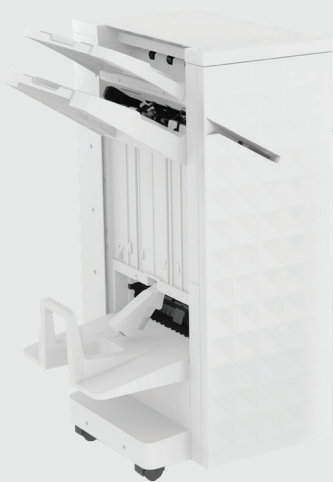


Inner finisher staples

Product number	Y1G13A
Cartridge capacity	5,000 staples

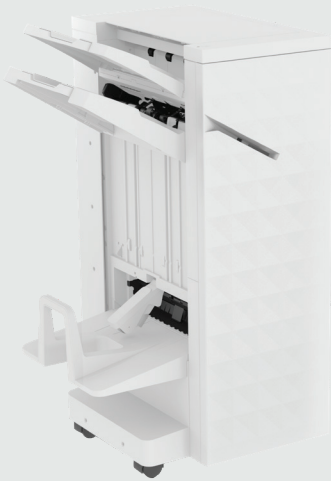
The following accessories are compatible with HP LaserJet Managed MFP E826, E731 series, and HP Color LaserJet Managed MFP E877 and E786 series.

Booklet finisher⁵



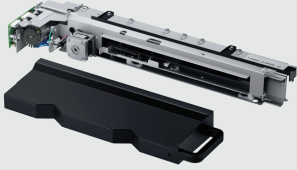
Product number	6GW51A
Type	Top tray: stack
	Main tray: sort, stack, staple, punch
	Booklet tray: saddle staple, C-folding, V-folding
Stack capacity	Top tray: up to 250 sheets
	Main (finishing) tray: up to 2,000 sheets
	Booklet tray: approximately 5 sets of 25 sheets each
Stack media sizes	Top tray: letter, legal, executive, statement, oficio, envelopes (#9, #10, Monarch), A3, A4, A5, A6, B5 (JIS, ISO), B4 (JIS), B6, RA4, SRA4, 8K, 16K, postcards (JIS), envelopes (B5, C5, C6, DL), folio, ledger
	Main tray (finishing): letter, legal, executive, statement, statement, oficio, A3, A4, A5, B5 (JIS, ISO), B4 (JIS), 8K, 16K, tabloid extra, folio, ledger, SRA3
Stack media types	Top tray: plain (60~90 g/m ²), thick (91~105 g/m ²), heavyweight (106~175 g/m ²), extra heavyweight (176~216 g/m ² , 217~256 g/m ² , 257~300 g/m ²), thin (60~70 g/m ²), cotton (75~90 g/m ²), colored (75~90 g/m ²), pre-printed (75~90 g/m ²), recycled (60~90 g/m ²), bond, archive, letterhead, pre-punched, thin cardstock (105~163 g/m ²), thick cardstock (170~216 g/m ²), heavy cardstock (217~256 g/m ²), extra-heavy cardstock d(257~300 g/m ²), thin glossy (106~169 g/m ²), thick glossy (170~216 g/m ²), envelope (75~90 g/m ²), thick envelope (91~120 gsm), transparency (138~146 gsm), labels (120~150 gsm) ²
	Main tray: plain (60~90 g/m ²), thick (91~105 g/m ²), heavyweight (106~175 g/m ²), extra heavyweight (176~216 g/m ² , 217~256 g/m ² , 257~300 g/m ²), thin (60~70 g/m ²), cotton (75~90 g/m ²), colored (75~90 g/m ²), pre-printed (75~90 g/m ²), recycled (60~90 g/m ²), bond, archive, letterhead, pre-punched, thin cardstock (105~163 g/m ²), thick cardstock (170~216 g/m ²), heavy cardstock (217~256 g/m ²), extra-heavy cardstock (257~300 g/m ²), thin glossy (106~169 g/m ²), thick glossy (170~216 g/m ²), transparency (138~146 gsm) ²
Media weights	16 to 93 lb (60 to 350 gsm)
Staple capacity	Staple: up to 65 sheets; 24 lb (90 gsm) or less Fold and staple: up to 25 sheets; 24 lb (90 gsm) or less Fold and staple with cover page and 19 plain sheets; 24 lb (90 gsm) or less

Booklet finisher⁵ (continued)



Staple media sizes	Letter, legal, executive, oficio 8.5 x 13 in, 11 x 17 in, A4, A3, A5, B4 (JIS), B5 (JIS), 8K 270 x 390 mm, 16K 195 x 270 mm
Staple media weights	14 to 68 lb (52 to 256 gsm)
Staple positions	Corner (single 45° or single flat), center (dual)
Staple cartridge capacity	5,000 staples
Punch types	NA 2/3, EU 2/4, swedish
Punch media sizes	Letter, legal, executive, oficio 8.5 x 13 in, 11 x 17 in, A4, A3, A5, B4 (JIS), B5 (JIS), 8K 270 x 390 mm, 16K 195 x 270 mm
Punch media weights	14 to 68 lb (52 to 256 g/m ²)
Booklet finisher capacity	Booklet: up to 25 sheets; 21 lb (80 g/m ²) or less
	C-fold: up to 3 sheets; 14 to 24 lb (52 to 90 g/m ²)
	V-fold: up to 5 sheets; 21 lb (80 g/m ²) or less
Booklet finisher media sizes	Booklet: letter, legal, executive, oficio 8.5 x 13 in, 11 x 17 in, A4, A3, A5, B4 (JIS), B5 (JIS), 8K 270 x 390 mm, 16K 195 x 270 mm
	C-fold: letter, A4
	V-fold: letter, legal, executive, oficio 8.5 x 13 in, 11 x 17 in, A4, A3, A5, B4 (JIS), B5 (JIS), 8K 270 x 390 mm, 16K 195 x 270 mm
Booklet finisher media types	Booklet and V-fold: plain (70~90 g/m ²), thick (91~105 g/m ²), heavyweight (106~175 g/m ²), extra heavyweight (176~216 g/m ²), 217~256 g/m ² , 257~300 g/m ² , thin (60~69 g/m ²), colored (75~90 g/m ²), pre-printed (75~90 g/m ²), recycled (60~90 g/m ²), bond, letterhead, thin cardstock (106~163 g/m ²), thick glossy (170~216 g/m ²), heavy glossy (217~256 g/m ²) ²
	C-folding: plain (70~90 g/m ²), thin (60~69 g/m ²), colored (75~90 g/m ²), pre-printed (75~90 g/m ²), recycled (60~90 g/m ²)
Booklet finisher media weights	16 to 32 lb (60 to 120 g/m ²), cover sheet : Up to 80 lb (300 g/m ²)
Booklet finisher folding	C-fold inward top, C-fold inward bottom, C-fold outward top, C-fold outward bottom, V-fold inward top, V-fold outward top
Dimensions (width x depth x height)	29.6 x 24.1 x 39.83 in (751.7 x 610 x 1016.4 mm)
Weight	136.69 lb (62 kg)

2/3 hole punch module for booklet finisher and stapler/stacker finisher



Product number	Y1G10A
Punch: media sizes	Letter, legal, executive, statement, oficio 8.5 x 13 in, 11 x 17 in; A4, A3, A5, B4 (JIS), B5 (JIS), 8K 270 x 390 mm, 16K 195 x 270 mm
Media sizes	14 to 80 lb (52 to 300 g/m ²)
Dimensions (width x depth x height)	3.14 x 19.09 x 9.25 in (80 x 485 x 235 mm)
Weight	6.3 lb (2.8 kg)

2/4 hole punch module for booklet finisher and stapler/stacker finisher



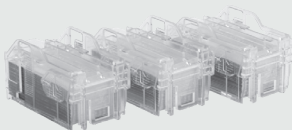
Product number	Y1G11A
Punch: media sizes	Letter, legal, executive, statement, oficio 8.5 x 13 in, 11 x 17 in; A4, A3, A5, B4 (JIS), B5 (JIS), 8K 270 x 390 mm, 16K 195 x 270 mm
Media sizes	14 to 80 lb (52 to 300 g/m ²)
Dimensions (width x depth x height)	3.14 x 19.09 x 9.25 in (80 x 485 x 235 mm)
Weight	6.3 lb (2.8 kg)

Swedish punch module for booklet finisher and stapler/stacker finisher



Product number	Y1G12A
Punch: media sizes	Letter, legal, executive, statement, oficio 8.5 x 13 in, 11 x 17 in; A4, A3, A5, B4 (JIS), B5 (JIS), 8K 270 x 390 mm, 16K 195 x 270 mm
Media sizes	14 to 80 lb (52 to 300 g/m ²)
Dimensions (width x depth x height)	3.14 x 19.09 x 9.25 in (80 x 485 x 235 mm)
Weight	6.3 lb (2.8 kg)

Booklet finisher staples



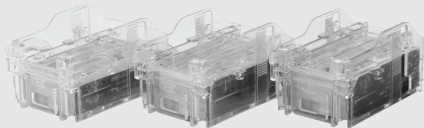
Product number	Y1G13A
Cartridge capacity	5,000 staples

The following accessories are compatible with HP LaserJet Managed MFP E826 and E731 series, and HP Color LaserJet Managed MFP E877 and E786 series (continued).

Stapler/stacker finisher⁴



Product number	6GW55A
Type	Top tray: stack
	Main tray: sort, stack, staple, punch
Stacker capacity	Top tray: up to 250 sheets
	Main (finishing) tray: up to 3,000 sheets
Stacker media sizes	Top tray: Letter, legal, executive, statement, oficio, envelopes (#9, #10, Monarch), A3, A4, A5, A6, B5 (JIS, ISO), B4 (JIS), B6, RA4, SRA4, 8K, 16K, postcards (JIS), envelopes (B5, C5, C6, DL), folio, ledger
	Main tray (finishing): letter, legal, executive, statement, oficio, A3, A4, A5, B5 (JIS, ISO), B4 (JIS), 8K, 16K, tabloid extra, folio, ledger, SRA3
Stacker custom media sizes	Top tray: 3.9 x 5.5 to 13 x 47.2 in (98 x 140 to 330 x 1200 mm)
Stacker media types	Top tray: plain (60~90 g/m ²), thick (91~105 g/m ²), heavyweight (106~175 g/m ²), extra heavyweight (176~216 g/m ² , 217~256 g/m ² , 257~300 g/m ²), thin (60~70 g/m ²), cotton (75~90 g/m ²), colored (75~90 g/m ²), pre-printed (75~90 g/m ²), recycled (60~90 g/m ²), bond, archive, letterhead, pre-punched, thin cardstock (105~163 g/m ²), thick cardstock (170~216 g/m ²), heavy cardstock (217~256 g/m ²), extra-heavy cardstock (257~300 g/m ²), thin glossy (106~169 g/m ²), thick glossy (170~216 g/m ²), envelope (75~90 g/m ²), thick envelope (91~120 gsm), transparency (138~146 gsm), labels (120~150 gsm)
	Main tray: plain (60~90 g/m ²), thick (91~105 g/m ²), heavyweight (106~175 g/m ²), extra heavyweight (176~216 g/m ² , 217~256 g/m ² , 257~300 g/m ²), thin (60~70 g/m ²), cotton (75~90 g/m ²), colored (75~90 g/m ²), pre-printed (75~90 g/m ²), recycled (60~90 g/m ²), bond, archive, letterhead, pre-punched, thin cardstock (105~163 g/m ²), thick cardstock (170~216 g/m ²), heavy cardstock (217~256 g/m ²), extra-heavy cardstock (257~300 g/m ²), thin glossy (106~169 g/m ²), thick glossy (170~216 g/m ²), transparency (138~146 g/m ²) ²
Stacker media weights	16 to 93 lb (60 to 350 g/m ²)
Staple capacity	Staple: up to 65 sheets ; 24 lb (90 g/m ²) or less
Staple media sizes	Letter, legal, executive, oficio 8.5 x 13 in, 11 x 17 in, A4, A3, A5, B4 (JIS), B5 (JIS), 8K 270 x 390 mm, 16K 195 x 270 mm
Staple media weights	14 to 68 lb (52 to 256 g/m ²)
Staple position	Corner (single 45° or single flat), center (dual)
Staple cartridge capacity	5,000 staples
Dimensions (width x depth x height)	29.6 x 24.1 x 39.83 in (751.7 x 610 x 1016.4 mm)
Weight	88.19 lb (40 kg)

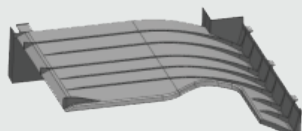


Stapler/stacker finisher staples

Product number	Y1G14A
Cartridge capacity	5,000 staples

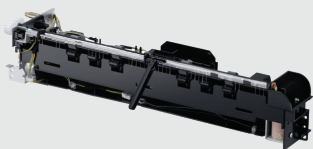
Workgroup

The following accessories are compatible with HP LaserJet Managed MFP E725 series, and HP Color LaserJet Managed MFP E782 and E783 series.



Job separator

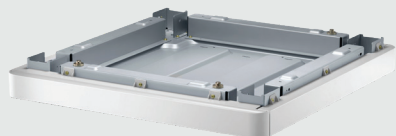
Product number	Y1G15A
Sort capacity	Up to 125 pages
Sort media sizes	Letter, letter R, legal, executive, statement, oficio, 11 x 17, A3, A4, A4 R, A5, B4 (JIS), B5 (JIS), 8K, 16K
Sort media weights	16 to 68 lb (60 to 256 g/m ²)
Dimensions (width x depth x height)	15.6 x 15.2 x 4.2 in (396.2 x 386 x 106.7 mm)
Weight	1.4 lb (0.6 kg)



Second exit^{4,5}

Product number	Y1G23A
Dimensions (width x depth x height)	15.7 x 4 x 3.9 in (398.8 x 101.6 x 99 mm)
Weight	2 lb (0.9 kg)

The following accessory is compatible with HP LaserJet Managed MFP E725 series, and HP Color LaserJet Managed E783 series.



Spacer⁵

Product number	Y1G24A
Dimensions (width x depth x height)	22.3 x 24 x 3 in (566.4 x 609.6 x 76.2 mm)
Weight	17 lb (7.7 kg)

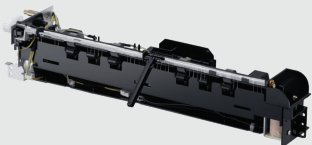
The following accessories are compatible with HP LaserJet Managed MFP E731 and E730 series, and HP Color LaserJet Managed MFP E786 and E785 series.

Job separator



Product number	6GW52A
Sort capacity	up to 125 pages
Sort media sizes	Letter, letter R, legal, executive, statement, oficio, 11 x 17, A3, A4, A4 R, A5, B4 (JIS), B5 (JIS), 8K, 16K
Sort media weights	16 to 68 lb (60 to 256 g/m ²)
Dimensions (width x depth x height)	15.55 x 15.2 x 4.21 in (395 x 386 x 107 mm)
Weight	1.37 lb (0.62 kg)

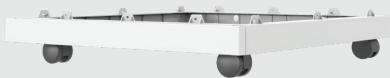
Second exit^{4,5}



Product number	Y1G23A
Dimensions (width x depth x height)	15.7 x 4 x 3.9 in (398.8 x 101.6 x 99 mm)
Weight	2 lb (0.9 kg)

The following accessory is compatible with HP LaserJet Managed MFP E731 series.

Spacer⁵



Product number	6GW58A
Dimensions (width x depth x height)	22.28 x 24.02 x 3.00 in (566 x 610 x 76.2 mm)
Weight	22.05 lb (10 kg)

Department

The following accessory is compatible with HP LaserJet Managed MFP E825 series, and HP Color LaserJet Managed MFP E876 series.

Job separator



Product number	Y1G01A
Sort capacity	Up to 125 pages
Sort media sizes	Letter, legal, executive, statement, oficio 8.5 x 13 in, 11 x 17 in; A3, A4, A5, oficio 216 x 340 mm, B4 (JIS), B5 (JIS), 8K 270 x 390 mm, 16K 195 x 270 mm
Sort media types	Bond, color transparency, colored, envelope, heavy envelope, heavy paperboard, HP EcoFFICIENT, labels, letterhead, pre-printed, pre-punched, plain, recycled, user type 1-10, light 60-74 g, HP Matte 90 g, HP Matte 105 g, mid-weight 96-110 g, HP Matte 120g, heavy 111-130 g, HP Matte 150g, extra heavy 131-175 g, HP Matte 200 g, cardstock 176-220 g, light paperboard 221-255 g, paperboard 256-300 g, mid-weight glossy 96-110 g, ² HP Glossy 120 g, ² HP Soft Gloss 120 g, ² heavy glossy 111-130 g, ² HP Glossy 150 g, ² extra-heavy glossy 131-175g, ² HP Glossy 200 g, ² card glossy 176-220 g ²
Sort media weights	16 to 68 lb (60 to 256 g/m ²)
Dimensions (width x depth x height)	Main body: 92.8 x 358.6 x 37.1 mm
	Tray: 410.4 x 397.2 x 58.6 mm
Weight	Main body: 39 g
	Tray: 482 g

The following accessory is compatible with HP LaserJet Managed MFP E826 series, and HP Color LaserJet Managed MFP E877 series.

Job separator



Product number	6GW50A
Sort capacity	Up to 125 pages
Sort media sizes	Letter, letter R, legal, executive, statement, oficio, 11 x 17, A3, A4, A4 R, A5, B4 (JIS), B5 (JIS), 8K, 16K
Sort media types	Plain, HP EcoEFICIENT, HP Matte 90 g, light 60-74 g, bond, recycled, HP Matte 105 g, HP Matte 120 g, HP Soft Gloss 120 g, HP Glossy 120 g, mid-weight 96-110 g, heavy 111-130 g, mid-weight glossy 96-110 g, heavy-glossy 111-130 g, HP Matte 150 g, HP Glossy 150 g, extra heavy 131-175 g, extra-heavy glossy 131-175 g, HP Matte 200 g, HP Glossy 200 g, carstock 176-220 g, card glossy 176-220 g, light paperboard 221-255 g, paperboard 256-300 g, letterhead, pre-printed, pre-punched, colored ²
Sort media weights	16 to 68 lb (60 to 256 g/m ²)
Dimensions (width x depth x height)	Main body : 92.8 x 358.6 x 37.1 mm
	Tray : 410.4 x 397.2 x 58.6 mm
Weight	Main body : 39 g
	Tray : 482 g

Department

The following accessories are compatible with the HP LaserJet Managed Flow MFP M830 series.



500-sheet output catch tray

Product number	TOF27A
Output: capacity	Up to 500 sheets
Media sizes	Letter, legal, executive, 11 x 17 in, 8.5 x 13 in; A3, A4, A5, B4, B5
Custom media sizes	3.86 x 7.52 to 12.28 x 18.5 in (98 x 191 to 312 x 470 mm)
Media types	Paper (bond, color, letterhead, plain, pre-printed, pre-punched, recycled, rough), cardstock, labels, transparencies
Media weights	16 to 53 lb (60 to 199 g/m ²)
Dimensions (width x depth x height)	19.5 x 16.5 x 22 in (495 x 419 x 559 mm)
Weight	3.9 lb (1.769 kg)



Booklet finisher

Product number	CZ285A
Type	Three separate bins; automatic offset, inline stapling and stacking, and booklet making with saddle-stitching and V-folding
Stack capacity	Mailbox mode: up to 1,300 sheets (bin 1), up to 1,700 sheets (bin 2), up to 150 sheets (bin 3)
	Stacker mode: up to 3,000 sheets (bin 1), up to 150 sheets (bin 2)
Stack media sizes	Letter, letter-R, legal, executive, 11 x 17 in, 8.5 x 13 in, 12 x 18 in; A3, A4, A4-R, A5, B5 (JIS), B4 (JIS), RA4, SRA4, 8K 270 x 390 mm, 8K 260 x 368 mm, 8K 7.75 x 10.75 mm, 16K 195 x 270 mm, 16K 184 x 260 mm, 16K 7.75 x 10.75 mm, SRA3, RA3
Stack media types	Paper (bond, color, letterhead, plain, pre-printed, pre-punched, recycled, rough), labels, cardstock, transparencies
Stack media weights	16 to 68 lb (60 to 256 g/m ²)
Dimensions (width x depth x height)	33.6 x 26.3 x 43 in (854 x 668 x 1093 mm)
Weight	191.4 lb (87 kg)



Booklet finisher staples

Product number	CC383A
Cartridge capacity	HP 2-pack 2,000-staple cartridge (4,000 staples)

Stapler/stacker finisher



Product number	CZ994A
Type	Two bins; automatic stapling and sheet stacking, sorting
Stack capacity	Mailbox mode: up to 1,300 sheets (bin 1), up to 1,700 sheets (bin 2)
	Stacker mode: up to 3,000 sheets (bin 1)
Stack custom media sizes	Letter, letter-R, legal, executive, 11 x 17 in, 8.5 x 13 in, 12 x 18 in; A3, A4, A4-R, A5, B5 (JIS), B4 (JIS), RA4, SRA4, 8K 270 x 390 mm, 8K 260 x 368 mm, 8K 7.75 x 10.75 mm, 16K 195 x 270 mm, 16K 184 x 260 mm, 16K 7.75 x 10.75 mm, SRA3, RA3
Stack media types	Paper (bond, color, letterhead, plain, pre-printed, pre-punched, recycled, rough), labels, cardstock, transparencies
Stack media weights	16 to 53 lb bond (60 to 199 g/m ²)
Dimensions (width x depth x height)	26 x 25.8 x 41.8 in (662 x 657 x 1063 mm)
Weight	149.6 lb (68 kg)
Staple capacity	Up to 50 sheets
Staple position	Top left, top right, 2 left, 2 right, 2 top
Staple cartridge capacity	5,000 staples

Stapler/stacker finisher with 2/3 hole punch



Product number	CZ995A
Type	Two bins; automatic stapling and sheet stacking, sorting; 2/3 hole punching
Stack capacity	Mailbox mode: up to 1,300 sheets (bin 1), up to 1,700 sheets (bin 2)
	Stacker mode: up to 3,000 sheets (bin 1)
Stack custom media sizes	Letter, letter-R, legal, executive, 11 x 17 in, 8.5 x 13 in, 12 x 18 in; A3, A4, A4-R, A5, B5 (JIS), B4 (JIS), RA4, SRA4, 8K (270 x 390 mm), 8K (260 x 368 mm), 8K (7.75 x 10.75 mm), 16K (195 x 270 mm), 16K (184 x 260 mm), 16K (7.75 x 10.75 mm), SRA3, RA3
Stack media types	Paper (bond, color, letterhead, plain, pre-printed, pre-punched, recycled, rough), labels, cardstock, transparencies
Stack media weights	16 to 53 lb (60 to 199 g/m ²)
Dimensions (width x depth x height)	33.6 x 26.3 x 43 in (854 x 668 x 1093 mm)
Weight	149.6 lb (68 kg)
Staple capacity	Up to 50 sheets
Staple position	Top left, top right, 2 left, 2 right, 2 top
Staple cartridge capacity	5,000 staples



Stapler/stacker finisher staples

Product number	C8091A
Cartridge capacity	5,000 staples

The following accessories are compatible with the HP Color LaserJet Managed Flow MFP M880 series.

Booklet finisher



Product number	A2W83A
Type	Three separate bins; automatic offset, inline stapling and stacking, and booklet making with saddle-stitching and V-folding
Stack capacity	Mailbox mode: up to 1,300 sheets (bin 1), up to 1,700 sheets (bin 2), up to 150 sheets (bin 3)
	Stacker mode: up to 3,000 sheets (bin 1), up to 150 sheets (bin 2)
Stack custom media sizes	Letter, letter-R, legal, executive, 11 x 17 in, 8.5 x 13 in, 12 x 18 in; A3, A4, A4-R, A5, B5 (JIS), B4 (JIS), RA4, SRA4, 8K 270 x 390 mm, 8K 260 x 368 mm, 8K 7.75 x 10.75 mm, 16K 195 x 270 mm, 16K 184 x 260 mm, 16K 7.75 x 10.75 mm, SRA3, RA3
Stack media types	Paper (bond, color, letterhead, plain, pre-printed, pre-punched, recycled, rough), labels, cardstock, transparencies
Stack media weights	16 to 53 lb (60 to 199 g/m ²)
Dimensions (width x depth x height)	26.9 x 26.3 x 43 in (683 x 668 x 1093 mm)
Weight	167.7 lb (76.1 kg)

Booklet finisher staples



Product number	CC383A
Cartridge capacity	HP 2-pack 2,000-staple cartridge (4,000 staples)



Stapler/stacker finisher staples

Product number	C8091A
Cartridge capacity	5,000 staples

Booklet finisher with 2/3 hole punch



Product number	A2W84A
Type	Three separate bins; automatic offset, inline stapling and stacking, and booklet making with saddle-stitching and V-folding; 2/3 hole punching
Stack capacity	Mailbox mode: up to 1,300 sheets (bin 1), up to 1,700 sheets (bin 2), up to 150 sheets (bin 3)
	Stacker mode: up to 3,000 sheets (bin 1), up to 150 sheets (bin 2)
Stack custom media sizes	Booklet making: letter-R, legal, 11 x 17 in, 8.5 x 13 in, 12 x 18 in; A3, A4-R, B4 (JIS)
	Stapling: letter, letter-R, legal, 11 x 17 in, 8.5 x 13 in; A3, A4, A4-R, B4 (JIS), 8K (270 x 390 mm)
	Hole punching: letter, letter-R, legal, 8.5 x 13 in, 11 x 17 in; A3, A4, A4-R, B4 (JIS), 8K (270 x 390 mm)
Stack media types	Paper (bond, color, letterhead, plain, pre-printed, pre-punched, recycled, rough), labels, cardstock, transparencies
Stack media weights	16 to 53 lb (60 to 199 g/m ²)
Dimensions (width x depth x height)	28.5 x 29 x 39.5 in (723.9 x 736.6 x 1003.3 mm)
Weight	183.2 lb (83.3 kg)

3-bin stapler/stacker with output



Product number	A2W80A
Type	Three bins; automatic stapling and sheet stacking, sorting
Stack capacity	Mailbox mode: up to 1,300 sheets (bin 1), up to 1,700 sheets (bin 2)
	Stacker mode: up to 3,000 sheets (bin 1)
Stack custom media sizes	Letter, letter-R, legal, 11 x 17 in, 8.5 x 13 in; A3, A4, A4-R, B4 (JIS), 8K (270 x 390)
Stack media types	Paper (bond, color, letterhead, plain, pre-printed, pre-punched, recycled, rough, heavy rough), HP EcoSMART lite, HP Matte 90 g, light 60-74 g, intermediate 85-95 g, HP Matte 120 g, HP Soft Gloss 120 g, HP Glossy 120 g, mid-weight 96-110 g, heavy 111-130 g, mid-weight glossy 96-110 g, heavy glossy 111-130 g, HP Matte 150 g, HP Glossy 150 g, extra heavy 131-175 g, heavy glossy 131-175 g, HP Matte 200 g, HP Glossy 200 g, cardstock 176-220 g, card glossy 176-220 g
Stack media weights	16 to 53 lb (60 to 199 g/m ²)
Staple capacity	Up to 15 sheets
Staple position	Top left, top right, 2 left, 2 right, 2 top
Cartridge capacity	5,000 staples
Dimensions (width x depth x height)	22.5 x 29 x 39.5 in (571.9 x 736.6 x 1003.3 mm)
Weight	120.1 lb (54.5 kg)

Finishing accessories

HP A4 LaserJet



Sort

Ideal for separating documents that don't require binding



Staple

Ideal for multipage documents or reports

Workgroup

The following accessories are compatible with the HP LaserJet Managed E601 series.



Stapler/stacker/mailbox

Product number	L0H20A
Type	Five bins; automatic stapling and sheet stacking, sorting
Stack capacity	800 sheets
Stack custom media sizes	5.83 x 8.27 to 8.5 x 14 in (148.5 x 210 to 216 x 356 mm)
Stack media types	Paper (plain, light, bond, recycled, heavy, pre-printed, pre-punched, colored, rough), mono transparency, labels, letterhead
Stack media weights	16 to 43 lb (60 to 163 g/m ²)
Dimensions (width x depth x height)	18.7 x 19.8 x 16.9 in (475 x 504 x 429 mm)
Weight	25.4 lb (11.5 kg)
Staple capacity	Up to 50 sheets
Staple position	Top left
Cartridge capacity	5,000 staples

Stapler/stacker/mailbox staples

Product number	J8J96A
Cartridge capacity	5,000 staples

HP LaserJet portfolio

Paper handling and finishing options guide | Transactional



HP Monochrome LaserJet printers and MFPs

The following accessory is compatible with M402, M404, M406/407, M426, M428, and M430/431.



550-sheet feeder/tray

Product number	D9P29A
Capacity	550 sheets
Dimensions (width x depth x height)	18.46 x 9.25 x 18.46 in (469 x 235 x 469 mm)
Packaged weight	10.36 lb (4.7 kg)

The following accessory is compatible with M501, M507, and M528.



550-sheet paper tray

Product number	F2A72A
Capacity	550 sheets
Dimensions (width x depth x height)	16.46 x 14.02 x 5.12 in (418 x 356 x 130 mm)
Packaged weight	8.86 lb (4.02 kg)

The following accessory is compatible with M507 and M528.



Printer cabinet

Product number	F2A73A
Dimensions (width x depth x height)	24.92 x 24.92 x 14.96 in (633 x 633 x 380 mm)
Packaged weight	32.71 lb (14.84 kg)

The following accessories are compatible with M610/611/612 and M634/635/636.



550-sheet paper feeder

Product number	LOH17A
Capacity	550 sheets
Dimensions (width x depth x height)	23.5 x 9.7 x 22.2 in (597 x 247 x 564 mm)
Packaged weight	13.2 lb (6 kg)



2,100-sheet paper feeder

Product number	LOH18A
Capacity	2,100 sheets
Dimensions (width x depth x height)	23.4 x 19.6 x 18.7 in (595 x 497 x 475 mm)
Packaged weight	28.6 lb (13 kg)



Printer stand

Product number	LOH19A
Dimensions (width x depth x height)	33.5 x 29.0 x 7.7 in (850 x 750 x 195 mm)
Packaged weight	41.9 lb (19.1 kg)



Stapler/stacker/mailbox with job offset

Product number	LOH20A
Capacity	Up to 800 sheets
Dimensions (width x depth x height)	30.5 x 23.4 x 24.0 in (775 x 595 x 610 mm)
Packaged weight	32 lb (14.5 kg)

The following accessories are compatible with M610/611/612 and M634/635/636 (continued).



Envelope feeder

Product number	L0H21A
Capacity	Up to 75 envelopes
Dimensions (width x depth x height)	23.5 x 9.7 x 22.2 in (597 x 247 x 564 mm)
Packaged weight	13.2 lb (6 kg)



Extension tray cover

Product number	L0H22A
Dimensions (width x depth x height)	17.4 x 3.9 x 4.0 in (433 x 100 x 102 mm)
Packaged weight	0.7 lb (0.3 kg)

The following accessories are compatible with M712 and M725.



500-sheet feeder/tray

Product number	CF239A
Capacity	500 sheets
Dimensions (width x depth x height)	28.3 x 27.6 x 11.0 in (718 x 702 x 280 mm)
Packaged weight	30.8 lb (14 kg)



3 x 500-sheet feeder and stand

Product number	CF242A
Capacity	1,500 sheets
Dimensions (width x depth x height)	35.4 x 33.2 x 22.7 in (899 x 844 x 576 mm)
Packaged weight	82.7 lb (37.6 kg)



1 x 500-sheet feeder, cabinet, and stand

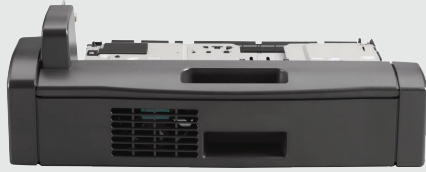
Product number	CF243A
Capacity	500 sheets
Dimensions (width x depth x height)	35.4 x 33.2 x 22.7 in (899 x 844 x 576 mm)
Packaged weight	67.1 lb (30.5 kg)



3,500-sheet HCI feeder and stand

Product number	CF245A
Capacity	3,500 sheets
Dimensions (width x depth x height)	35.4 x 33.2 x 22.7 in (899 x 844 x 576 mm)
Packaged weight	102 lb (46.4 kg)

The following accessory is compatible with M712.



Duplex printing assembly

Product number	CF240A
Dimensions (width x depth x height)	22.7 x 19.9 x 11.7 in (576 x 505 x 296 mm)
Packaged weight	28.6 lb (13 kg)

The following accessories are compatible with M806 and M830.



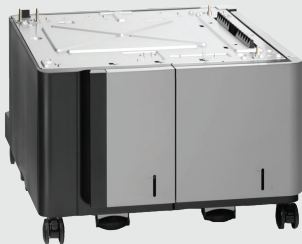
500-sheet output catch tray

Product number	T0F27A
Capacity	500 sheets
Dimensions (width x depth x height)	19.5 x 16.5 x 22 in (495 x 419 x 559 mm)
Packaged weight	3.9 lb (1.769 kg)



1,500-sheet input tray

Product number	T0F54A
Capacity	1,500 sheets
Dimensions (width x depth x height)	25 x 28 x 15.7 in (634 x 715 x 399 mm)
Packaged weight	69 lb (31.4 kg)



3,500-sheet HCI feeder and stand

Product number	C3F79A
Capacity	3,500 sheets
Dimensions (width x depth x height)	22.70 x 32.99 x 26.41 in (856 x 838 x 671 mm)
Packaged weight	112.2 lb (51 kg)

The following accessories are compatible with M806 and M830 (continued).



Booklet maker/finisher

Product number	CZ285A
Dimensions (width x depth x height)	43.11 x 33.38 x 50.43 in (1095 x 848 x 1281 mm)
Packaged weight	253 lb (115 kg)



Stapler/stacker

Product number	CZ994A
Capacity	50 pages per document
Dimensions (width x depth x height)	43.11 x 33.38 x 50.43 in (1095 x 848 x 1281 mm)
Packaged weight	253 lb (115 kg)



Stapler/stacker with 2/3 hole punch

Product number	CZ995A
Capacity	50 pages per document
Dimensions (width x depth x height)	43.11 x 33.38 x 50.43 in (1095 x 848 x 1281 mm)
Packaged weight	253 lb (115 kg)

The following accessories are compatible with M634, M635, and M636.



Envelope feeder

Product number	J8J90A
Capacity	Up to 75 envelopes
Dimensions (width x depth x height)	23.7 x 12.2 x 24.4 in (601 x 309 x 620 mm)
Packaged weight	15 lb (6.8 kg)

The following accessories are compatible with M634, M635, and M636 (continued).



1 x 550-sheet paper feeder with stand and cabinet

Product number	J8J91A
Capacity	550 sheets
Dimensions (width x depth x height)	31.3 x 29.3 x 24.2 in (794 x 745 x 615 mm)
Packaged weight	41 lb (18.6 kg)



1 x 550 and 2,000-sheet HCI feeder and stand

Product number	J8J92A
Capacity	2,550 sheets
Dimensions (width x depth x height)	31.3 x 29.3 x 24.2 in (794 x 745 x 615 mm)
Packaged weight	55.6 lb (25.2 kg)



3 x 550-sheet paper feeder and stand

Product number	J8J93A
Capacity	1,650 sheets
Dimensions (width x depth x height)	31.3 x 29.3 x 24.2 in (794 x 745 x 615 mm)
Packaged weight	50 lb (22.7 kg)



550-sheet paper feeder

Product number	J8J89A
Capacity	550 sheets
Dimensions (width x depth x height)	23.7 x 12.2 x 24.4 in (601 x 309 x 620 mm)
Packaged weight	15 lb (6.8 kg)

HP Color LaserJet printers and MFPs

The following accessory is compatible with M452, M454, M455, M477, M479, and M480.



550-sheet paper tray

Product number	CF404A
Capacity	550 sheets
Dimensions (width x depth x height)	16.02 x 17.60 x 6.10 in (407 x 447 x 155 mm)
Packaged weight	10.58 lb (4.8 kg)

The following accessories are compatible with M554/555, and M578.



550-sheet media tray

Product number	B5L34A
Capacity	550 sheets
Dimensions (width x depth x height)	23.0 x 9.7 x 22.6 in (585 x 247 x 575 mm)
Packaged weight	16 lb (5.8 kg)



Printer cabinet

Product number	B5L51A
Dimensions (width x depth x height)	25.6 x 23.3 x 15.2 in (650 x 590 x 385 mm)
Packaged weight	47.0 lb (21.3 kg)

The following accessories are compatible with M652, M653, M681, and M682.

550-sheet paper feeder



Product number	P1B09A
Capacity	550 sheets
Dimensions (width x depth x height)	23.4 x 9.8 x 25.5 in (595 x 250 x 647 mm)
Packaged weight	17.5 lb (7.9 kg)

550-sheet paper tray with stand



Product number	P1B10A
Capacity	550 sheets
Dimensions (width x depth x height)	31.3 x 29.3 x 24.2 in (794 x 745 x 615 mm)
Packaged weight	55.5 lb (25.2 kg)

1 x 550 and 2,000-sheet HCI feeder and stand



Product number	P1B11A
Capacity	2,000 sheets
Dimensions (width x depth x height)	23.4 x 9.8 x 25.5 in (595 x 250 x 647 mm)
Packaged weight	65.5 lb (29.7 kg)

1 x 550 and 2,000-sheet HCI feeder and stand



Product number	P1B12A
Capacity	2,000 sheets
Dimensions (width x depth x height)	31.3 x 29.3 x 24.2 in (794 x 745 x 615 mm)
Packaged weight	67.0 lb (30.4 kg)

The following accessories are compatible with M750 and M775.

550-sheet paper tray



Product number	CE860A
Capacity	550 sheets
Dimensions (width x depth x height)	27.67 x 27.91 x 11.02 in (703 x 719 x 281 mm)
Packaged weight	30 lb (13.6 kg)

3 x 500-sheet paper feeder and stand



Product number	CE725A
Capacity	1,500 sheets
Dimensions (width x depth x height)	38.22 x 36.22 x 22.75 in (970 x 920 x 578 mm)
Packaged weight	79.2 lb (36 kg)

The following accessories are compatible with M775.

1 x 500-sheet feeder stand



Product number	CE792A
Capacity	500 sheets
Dimensions (width x depth x height)	29.3 x 26.3 x 17.3 in (744 x 668 x 432 mm)
Packaged weight	43 lb (19.5 kg)

1 x 3,500-sheet feeder stand



Product number	CF305A
Capacity	3,500 sheets
Dimensions (width x depth x height)	35.4 x 33.2 x 22.7 in (899 x 844 x 576 mm)
Packaged weight	102 lb (46.4 kg)

The following accessories are compatible with M751 and M856.



550-sheet paper tray

Product number	T3V27A
Capacity	550 sheets
Dimensions (width x depth x height)	29.7 x 26.0 x 10.1 in (753 x 660 x 256 mm)
Packaged weight	24.9 lb (11.3 kg)



2 x 550-sheet paper tray and stand

Product number	T3V29A
Capacity	1,100 sheets
Dimensions (width x depth x height)	30.8 x 28.1 x 20.7 in (783 x 713 x 527 mm)
Packaged weight	68.4 lb (31.0 kg)

The following accessories are compatible with M751, M856, and M776.



2,700-sheet HCI paper tray and stand

Product number	T3V30A
Capacity	2,700 sheets
Dimensions (width x depth x height)	30.8 x 28.1 x 20.7 in (783 x 713 x 527 mm)
Packaged weight	80.7 lb (36.6 kg)



Printer stand

Product number	T3V28A
Dimensions (width x depth x height)	26.8 x 30.9 x 16.7 in (680 x 785 x 425 mm)
Packaged weight	69.3 lb (31.5 kg)

The following accessories are compatible with M880 and M855.



3-bin stapler/stacker with output

Product number	A2W80A
Capacity	3,000 sheets
Dimensions (width x depth x height)	33.4 x 38.4 x 62.5 in (848 x 974 x 1588 mm)
Packaged weight	230.1 lb (104.63 kg)



Booklet finisher

Product number	A2W83A
Capacity	3,000 sheets
Dimensions (width x depth x height)	33.4 x 38.4 x 62.5 in (848 x 974 x 1588 mm)
Packaged weight	278.5 lb (126.63 kg)



Booklet maker/finisher with 2/3 hole punch

Product number	A2W84A
Capacity	3,000 sheets
Dimensions (width x depth x height)	33.4 x 43.1 x 62.5 in (848 x 1095 x 1588 mm)
Packaged weight	248.9 lb (113.2 kg)



3 x 500-sheet paper feeder and stand

Product number	C1N63A
Capacity	1,500 sheets
Dimensions (width x depth x height)	27.8 x 27.6 x 15.3 in (706 x 701 x 388 mm)
Packaged weight	78.7 lb (35.7 kg)

Staple cartridge refills¹

Description	Part number	Package amount	Compatible products
1 x 5,000 staple cartridge	C8091A	5,000 staples	M630, M680, M725, M775, M806, M830, M855, M880
1 x 5,000 staple cartridge	C8092A	5,000 staples	M9040, M9050, M9500
2 x 2,000 staple cartridge	CC383A	4,000 staples	CM6040, CP6015, M806, M830, M855, M880
1 x 5,000 staple cartridge	J8J96A	5,000 staples	M607, M608, M609, M610, M611, M612, M631, M632, M633, M634, M635, M636, M681, M682, PW 774, PW 779, PW 780, PW 785
3 x 1,000 staple cartridge	Q3216A	3,000 staples	M604, M605, M606, P4014, P4015
2 x 1,500 staple cartridge	Q7432A	3,000 staples	M527, M528, M575, M577, M525, M3035
3 x 5,000 staple cartridge	Q7432A	15,000 staples	MFP 785

Disclaimers and trademarks

Legal footnotes

1. HP sales partners with tech-support (must-have).
 2. Glossy media types not supported by HP Laser Jet Managed MFP E72525, MFP E72530, MFP E72535, MFP E82540, MFP E82550, MFP E82560, or MFP E826/E731/E730 series.
 3. Tray heater accessories (Y1G22A #BGJ and Y1G22A #B19) are optional accessories. The tray heater can be used in trays 2 and 3 of the printer, with the dual cassette feeders (Y1F97A and Y1F98A), and with the high-capacity input trays (Y1F99A and Y1G21A).
 4. Purchase of the Inner finisher (Y1G00A) for the HP LaserJet Managed MFP E72525, MFP E72530, MFP E72535, or HP Color LaserJet Managed MFP E78323, MFP E78325, MFP E78330 also requires purchase of the second exit (Y1G23A). Likewise, purchase of the Inner finisher (6GW49A) for the HP Laser Jet Managed MFP E731/E730 series, or HP Color Laser Jet Managed MFP E786/E785 series also requires purchase of the second exit (Y1G23A).
 5. Purchase of the booklet finisher (Y1G07A) or stapler/stacker finisher (Y1G18A) for the HP LaserJet Managed MFP E72525, MFP E72530, or MFP E72535 also requires purchase of second exit (Y1G23A) and spacer (Y1G24A). Purchase of the booklet finisher (Y1G07A) or stapler/stacker finisher (Y1G18A) for the HP Color LaserJet Managed MFP E78323, MFP E78325, or MFP E78330 also requires purchase of the second exit (Y1G23A). Likewise, purchase of the booklet finisher (6GW51A) or stapler/stacker finisher (6GW55A) for the HP Laser Jet Managed MFP E731 series also requires purchase of second exit (Y1G23A) and spacer (6GW58A). Purchase of the booklet finisher (6GW51A) or stapler/stacker finisher (6GW55A) for the HP Color Laser Jet Managed MFP E786 series also requires purchase of the second exit (Y1G23A).
- Staple cartridge refills only available for MFP models with stapling capabilities. Data subject to change. Please refer to hp.com or your account manager.

