



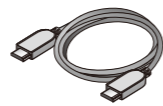
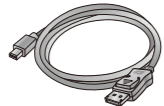
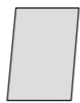
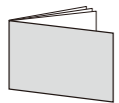
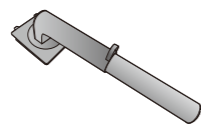
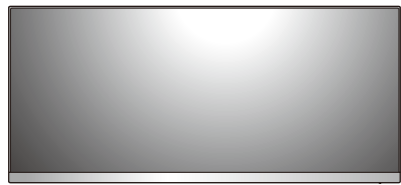
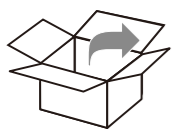
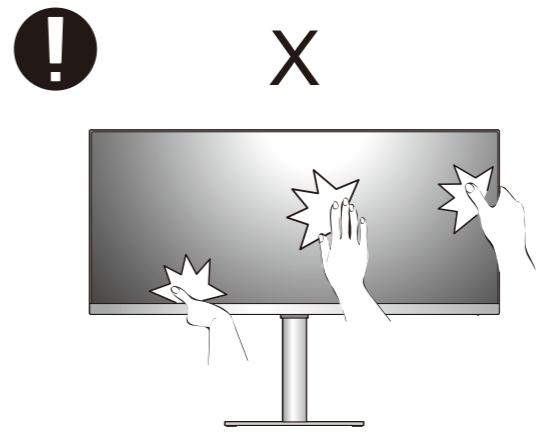
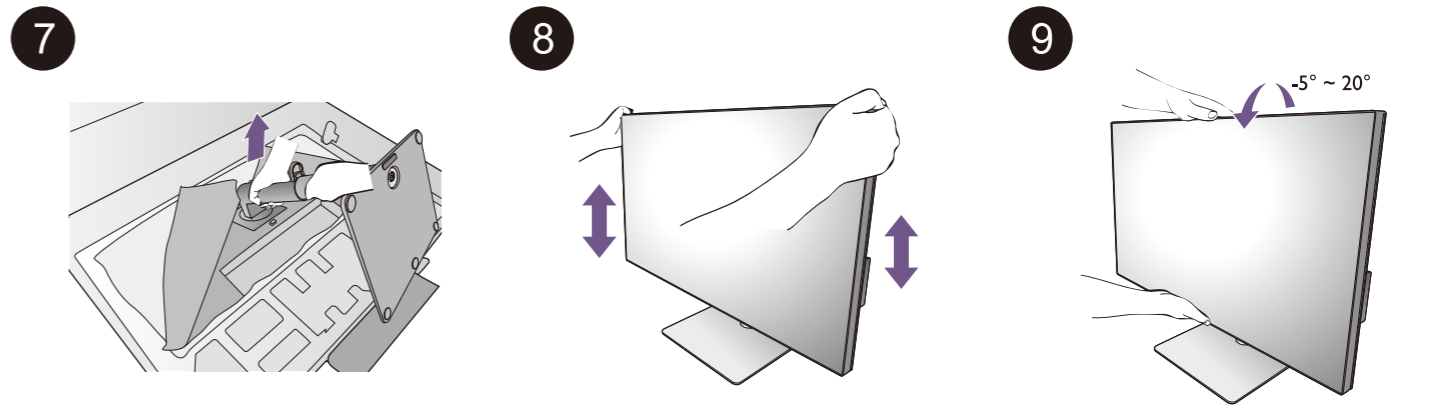
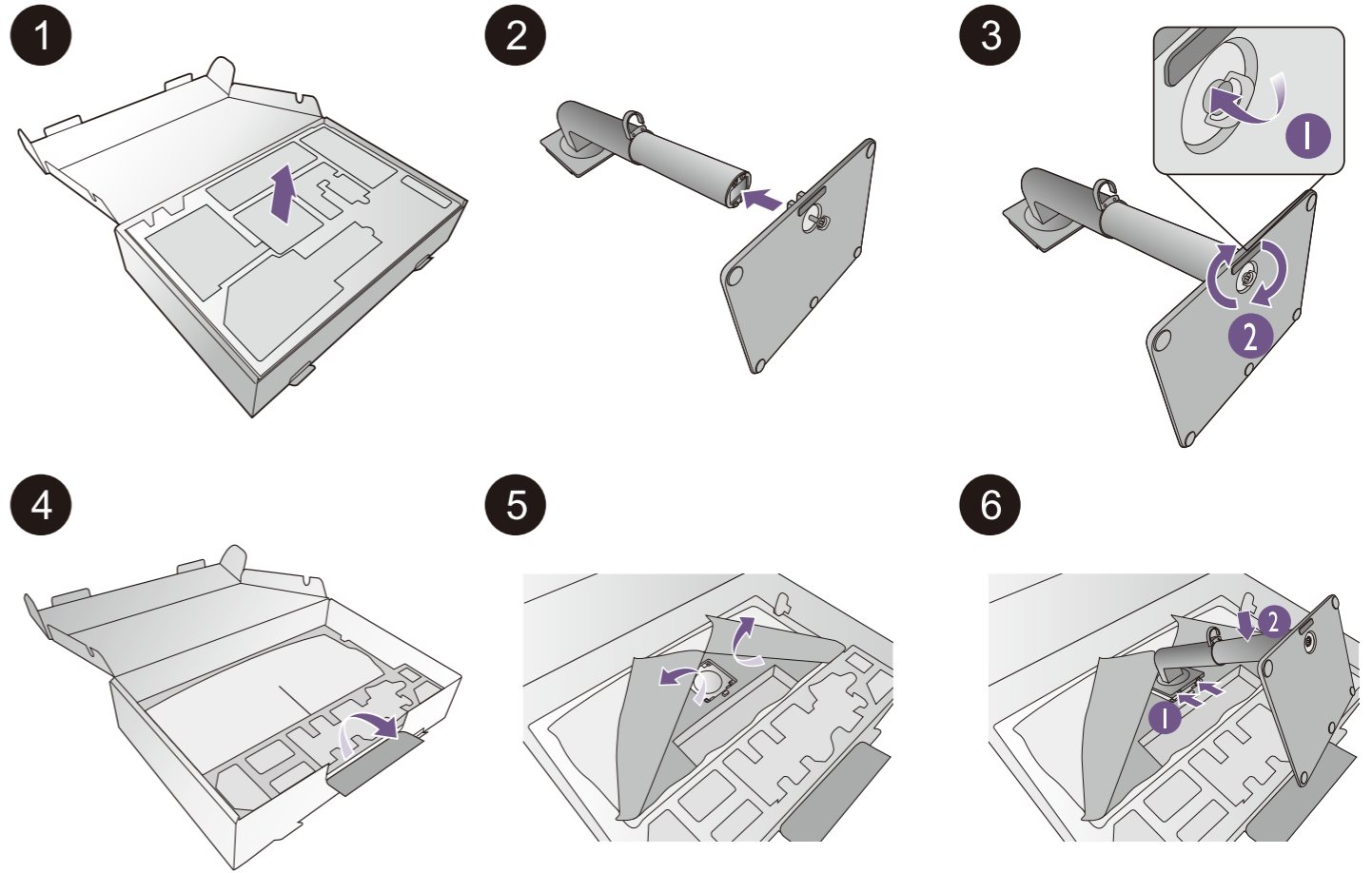
# LCD Monitor Quick Start Guide

DesignVue Designer Monitor | PD Series



DN: PD3420-EQ-V0

© 2020 BenQ Corporation. All rights reserved. Rights of modification reserved.



Hotkey Puck G2

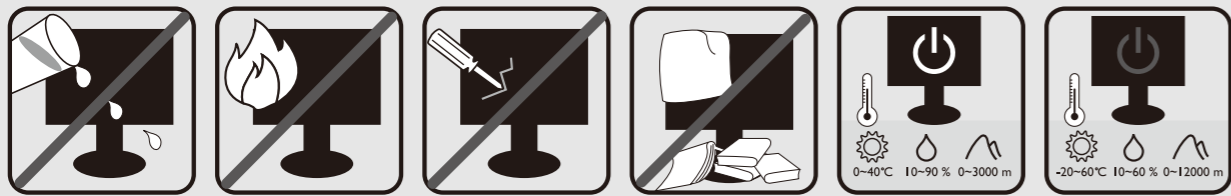
DP to mini-DP

USB

HDMI

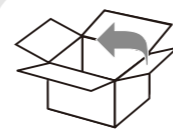
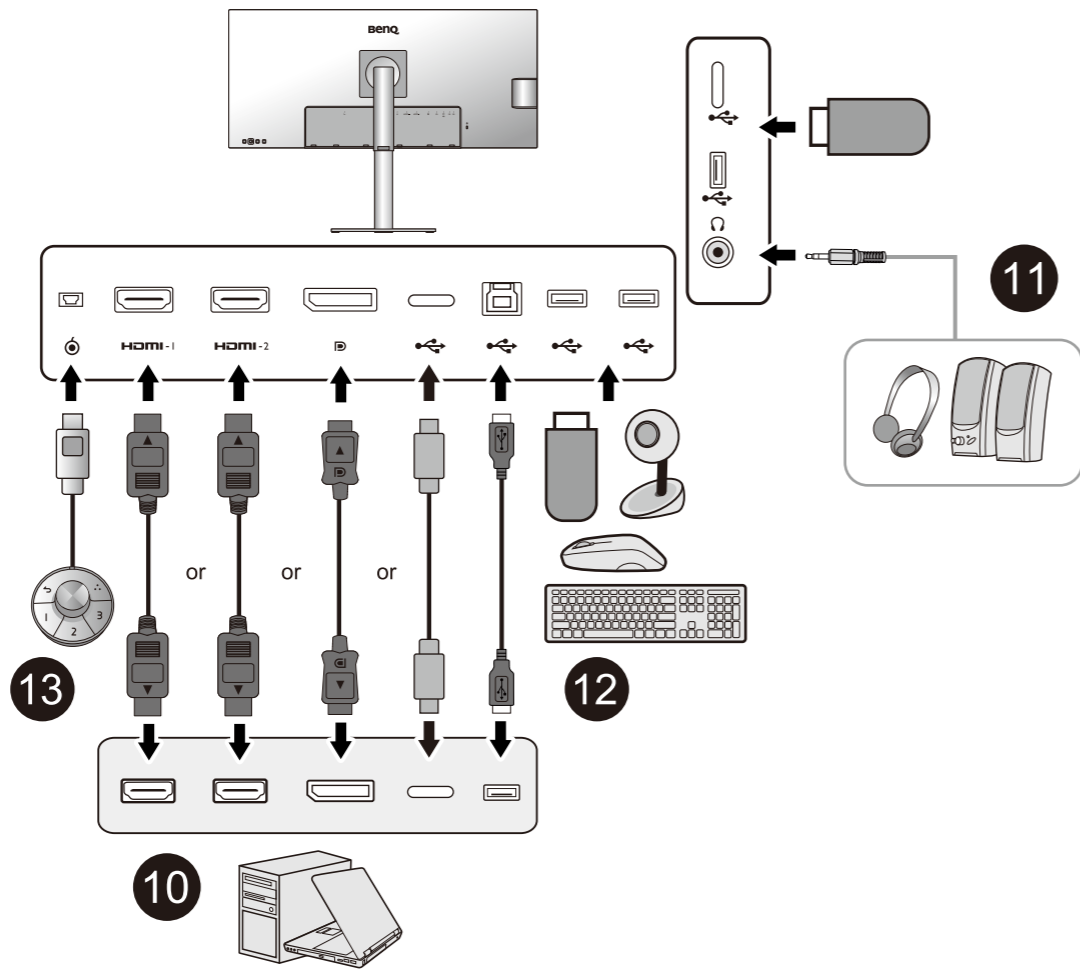
USB-C™

Installation Guide

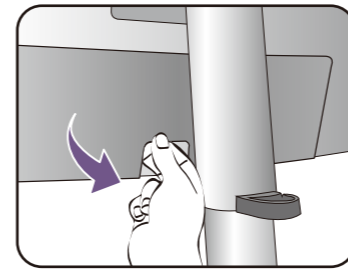


P/N: 4J.XXXXX.XXX

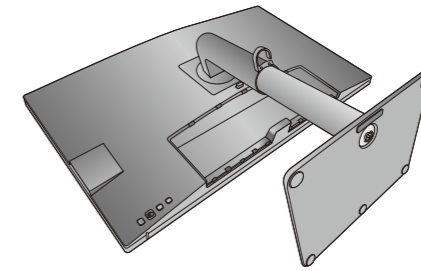
- 10 Video
- 11 Audio
- 12 USB
- 13 Hotkey Puck G2



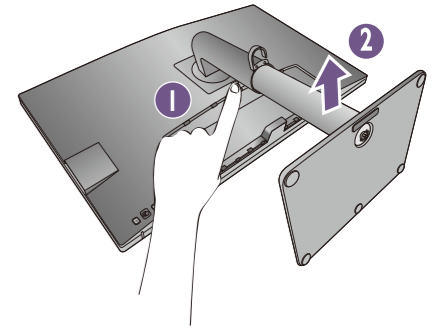
1



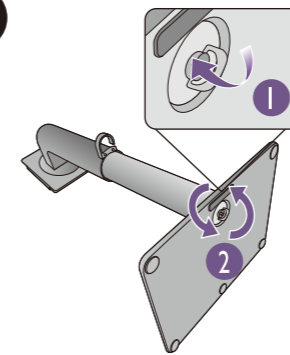
2



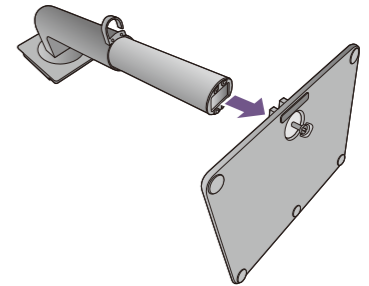
3



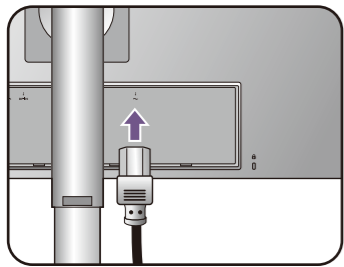
4



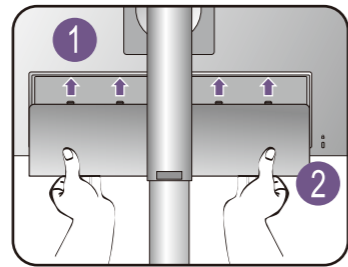
5



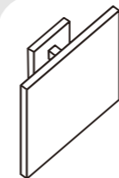
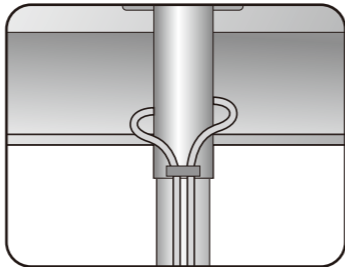
14



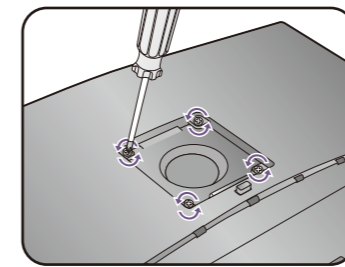
15



16

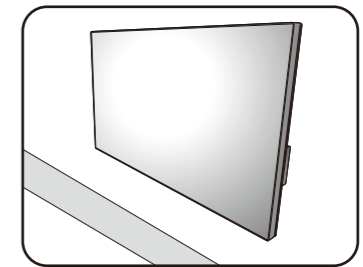


1

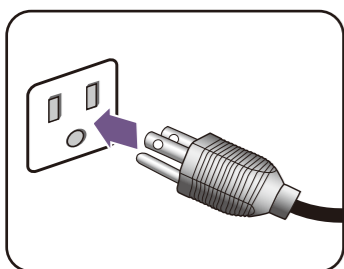


M4 x 10 mm

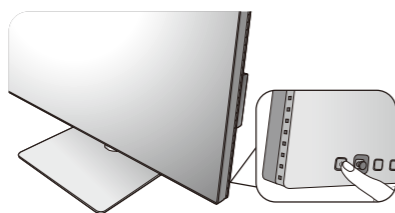
2



17

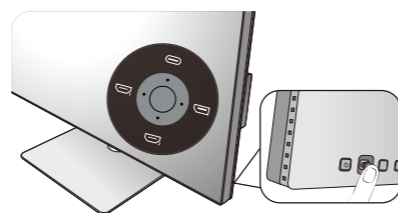


18



19

(USB-C / DP / HDMI1 / HDMI2)



[www.BenQ.com](http://www.BenQ.com) > Support > Download & FAQ > Model name > User Manual



For product support and more information.



Hotkey Puck G2



ICC Sync

