

Canon

TS5350i series

Getting Started

Démarrage

Inbetriebnahme

Aan de Slag-gids

Guida Rapida

Para Começar

Guía de inicio

ΞΕΚΙΝΩΝΤΑΣ

Uppstartsguide

Komme i gang

Før du begynder

Aloitusopas



<https://ij.start.canon>



Read **Safety and Important Information** (addendum) first.

Commencez par lire **Sécurité et informations importantes** (addendum).

Lesen Sie **Sicherheitsinformationen und wichtige Hinweise** (Anhang) zuerst.

Lees eerst **Veiligheidsinformatie en belangrijke informatie** (addendum).

Leggere innanzitutto **Informazioni importanti e sulla sicurezza** (addendum).

Leia **Informações Importantes e Sobre Segurança** (adendo) primeiro.

Lea primero **Información de seguridad e información importante** (apéndice).

Διαβάστε πρώτα τις **Πληροφορίες για την ασφάλεια και σημαντικές πληροφορίες** (συμπλήρωμα).

Läs **Information om säkerhet och annan viktig information** (bilaga) först.

Les **Sikkerhetsinformasjon og viktig informasjon** (tillegg) først.

Læs **Sikkerhedsoplysninger og vigtige oplysninger** (tillæg) først.

Lue **Turvallisuus ja tärkeitä tietoja** (lisähuomautus) ensin.

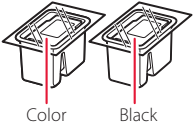


Q T 6 3 8 4 4 V 0 1

Setting Up the Printer

1. Box Contents

● FINE Cartridges



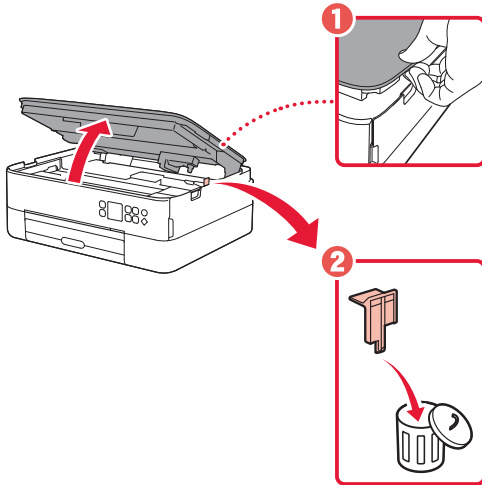
● Power Cord

- Safety and Important Information
- Getting Started (this manual)

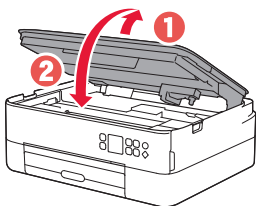
2. Removing Packing Materials



- 1 Remove and dispose of any packing materials and orange tape.
- 2 Open the scanning unit / cover, remove and dispose of the orange tape and protective material inside.



- 3 Close the scanning unit / cover.
 - Open the scanning unit / cover fully and then close it.

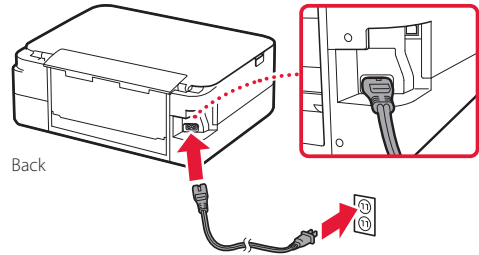


Caution
Watch your fingers.

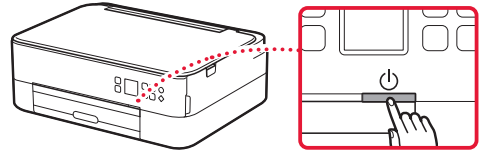
3. Turning on the Printer



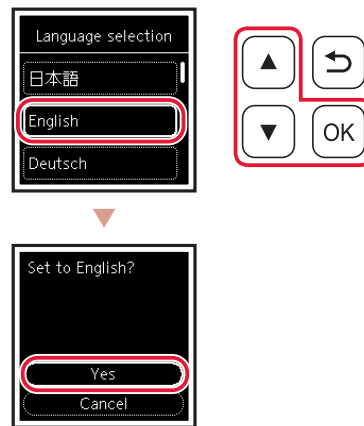
- 1 Connect the power cord.



- 2 Press the **ON** button.



- 3 Use the **▲** and **▼** buttons to select a language, and then press the **OK** button.

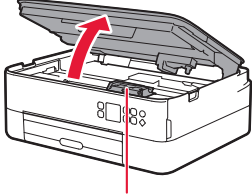


Setting Up the Printer

4. Installing the FINE Cartridges



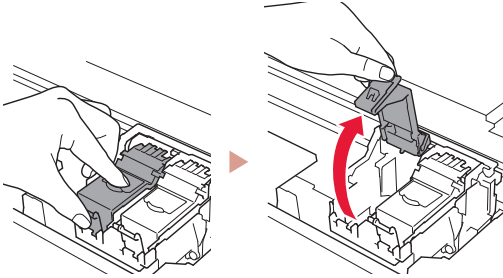
1 Open the scanning unit / cover.



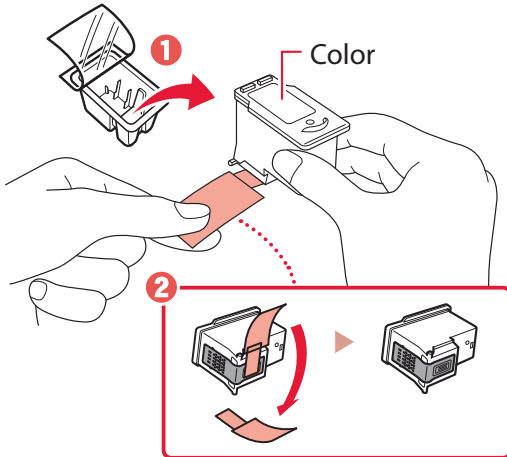
⚠ Caution

Do not touch the FINE cartridge holder until it stops moving.

2 Pinch and open the ink cartridge locking cover on the left-hand side.

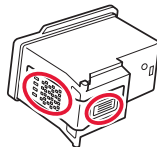


3 Remove the Color FINE cartridge from the container and remove the protective tape.

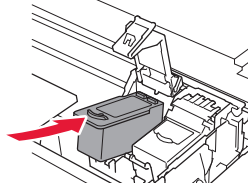


»»» Important

- Do not touch the ink on the protective tape. It could stain your hands or surrounding objects.
- Do not touch the areas shown in the figure. Otherwise, the printer may not print correctly.

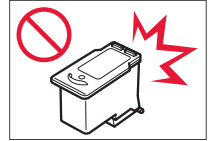


4 Set the Color FINE cartridge in the FINE cartridge holder.

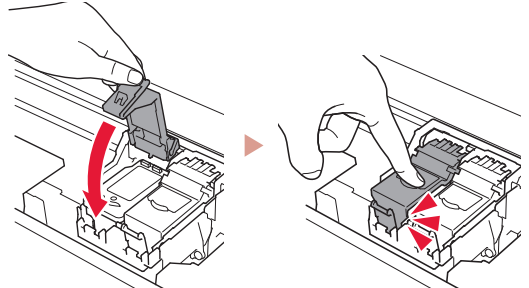


»»» Important

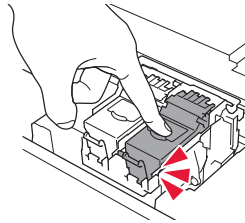
Do not bump the FINE cartridge. Doing so may cause a malfunction.



5 Push down the ink cartridge locking cover firmly until it snaps into place to close it completely.

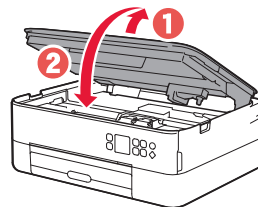


6 Repeat steps 2 to 5 and install the Black FINE cartridge as well, on the right-hand side.



7 Close the scanning unit / cover.

- The printer will start initializing.



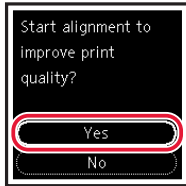
⚠ Caution

Watch your fingers.

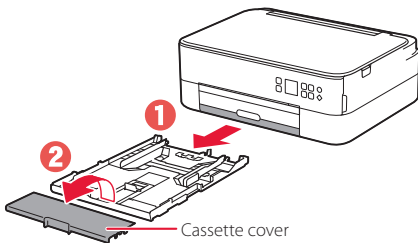
5. Loading Paper



1 Press the **OK** button.

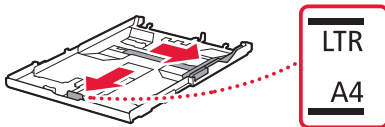


2 Remove the cassette from the printer and remove the cassette cover.



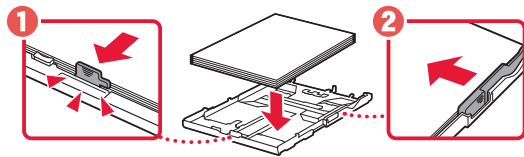
3 Slide apart the paper guides.

- Slide the right paper guide to the right edge. Align the front paper guide with the Letter or A4 mark.

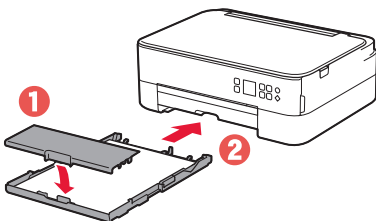


4 Load paper.

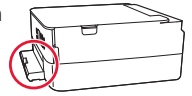
- Load 2 or more sheets of Letter or A4 sized plain paper.
- Place the paper against the front paper guide, and align the right paper guide to the width of the paper.



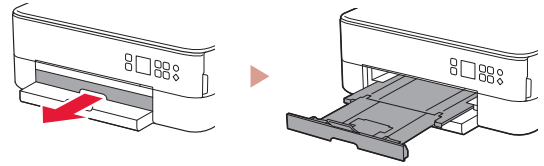
5 Attach the cassette cover and replace the cassette.



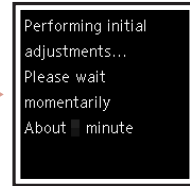
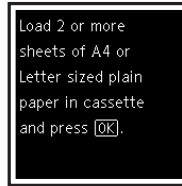
- Look at it from the side to confirm it looks like the diagram.



6 Pull out the paper output tray.



7 Press the **OK** button.



▶▶▶ Note

The alignment process prints out two double sided sheets. Do not pull out the paper or use the printer until alignment is complete.

8 Check that the following screen appears.



If you will use the printer without connecting any other devices, setup is now complete.

Select the connection method that best matches how you will use the printer.

- To use the printer without connecting to any other devices
 - ➔ Setup is now complete.
- To use the printer connecting to a computer or smartphone
 - ➔ Proceed to the next page.

Setting Up the Printer

What device are you connecting?



Computer



Computer and
smartphone





Smartphone

6-a

Connecting to a Computer

If you are using multiple computers, perform these steps on each computer.



- 1 Access the Canon website from your computer.
 <https://ij.start.canon>
- 2 Select  **Set Up**.
- 3 Enter your printer's model name and click **Go**.
- 4 Click **Start**.
- 5 Click **(B) Connecting to a Computer/Smartphone**.
 - The following steps are for Windows users.
- 6 Click **Download**.
- 7 Run the downloaded file.
- 8 Follow the on-screen instructions.
 - These operations may take some time.
 - To connect to a smartphone as well, see "6-b. Connecting to a Smartphone" on page 5.

6-b

Connecting to a Smartphone

If you are using multiple smartphones, perform these steps on each smartphone.



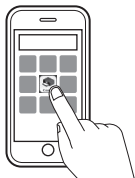
1 Install the "Canon PRINT Inkjet/SELPHY" app on your smartphone.



- Search for "Canon PRINT" in App Store, or Google Play.
- Access the Canon website to download the app.



2 Open the installed app, and follow the on-screen instructions in the app to add your printer.



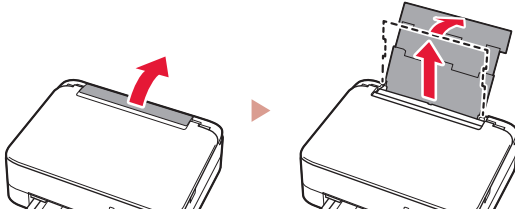
Once you have added your printer, you can print from your smartphone.

To print photos, see "Loading Photo Paper" on page 6.

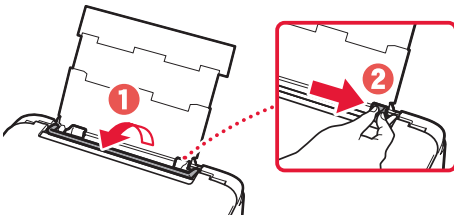
Loading Photo Paper

Photo paper can only be loaded in the rear tray.

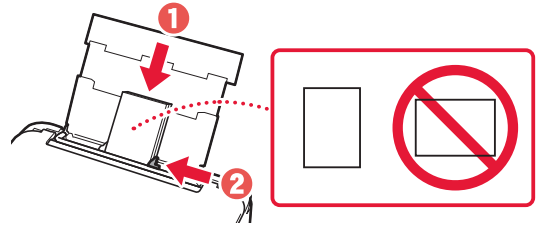
- 1 Open the rear tray cover and extend the paper support.



- 2 Open the feed slot cover and slide the right-hand side paper guide to the far right.

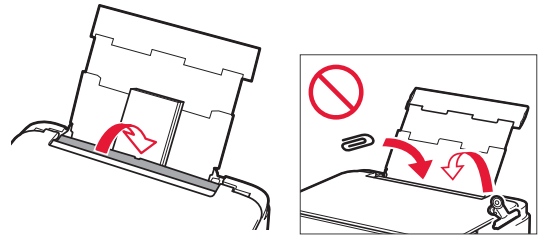


- 3 Load several sheets of photo paper with the print side facing up and slide the side paper guide against the edge of the paper stack.



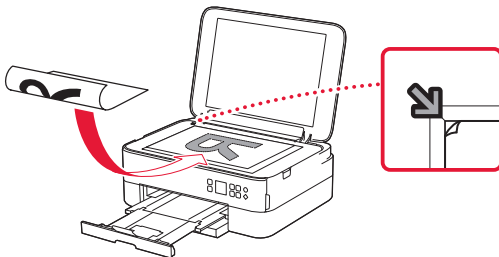
- 4 Close the feed slot cover.

- Follow the on-screen instructions to set information for the loaded paper.



Copying

- 1 Turn on the printer.
- 2 Load Letter or A4 sized plain paper.
- 3 Open the document cover and place the document face down on the platen. Align the document with the alignment mark (↘).



- 4 Close the document cover.
- 5 Press the **OK** button.
- 6 Select **Copy settings**, and then press the **OK** button.
- 7 Specify print settings using the ▲, ▼ and **OK** buttons.

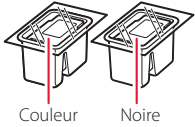


- 8 Press the **Start** button.

Configuration de l'imprimante

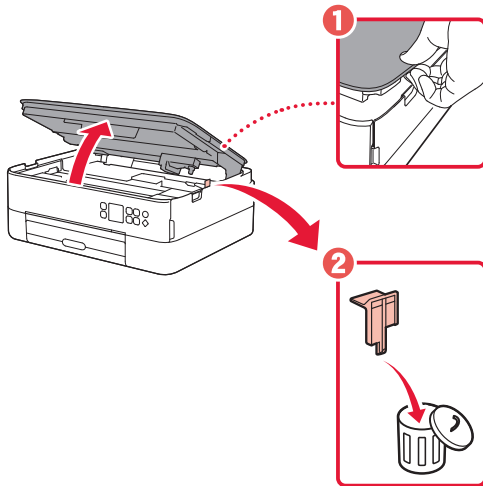
1. Contenu de la boîte

- Cartouches FINE
 - Cordon d'alimentation
 - Sécurité et informations importantes
 - Démarrage (ce manuel)
- Couleur Noire

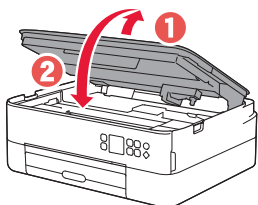


2. Retrait du matériel d'emballage

- 1 Enlevez et jetez tout matériel d'emballage et bande orange.
- 2 Ouvrez l'unité de numérisation / capot, retirez et jetez tout bande orange et matériau protecteur se trouvant à l'intérieur.



- 3 Fermez l'unité de numérisation / capot.
 - Ouvrez complètement l'unité de numérisation / capot, puis fermez-la.

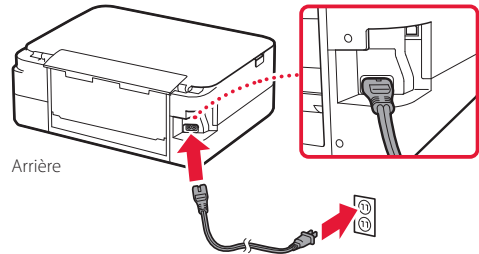


▲ Attention
Faites attention à vos doigts.

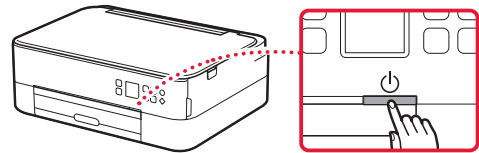
3. Mise sous tension de l'imprimante



- 1 Branchez le cordon d'alimentation.



- 2 Appuyez sur le bouton **MARCHE (ON)**.



- 3 Utilisez les boutons ▲ et ▼ pour sélectionner une langue, puis appuyez sur le bouton **OK**.

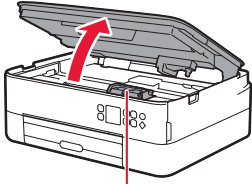


Configuration de l'imprimante

4. Installation des cartouches FINE



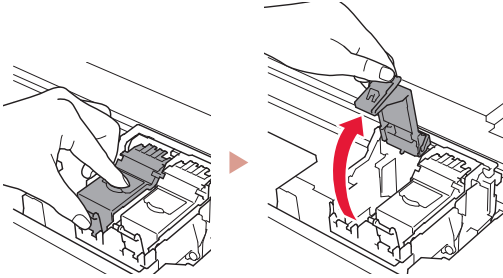
- 1 Ouvrez l'unité de numérisation / capot.



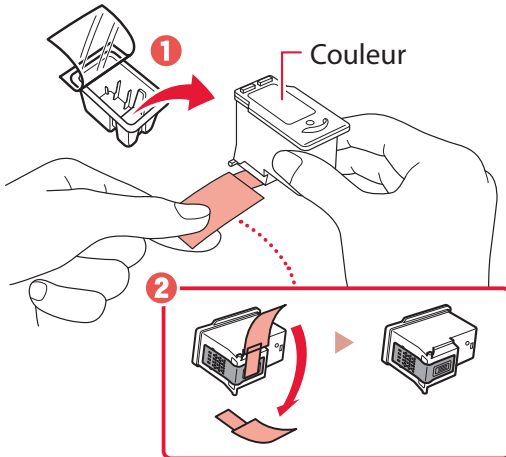
⚠ Attention

Ne touchez pas le porte-cartouche FINE avant son arrêt.

- 2 Pincez et ouvrez le couvercle de verrouillage de cartouche d'encre sur la gauche.

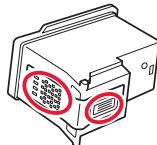


- 3 Retirez la cartouche FINE couleur du conteneur et retirez le ruban protecteur.

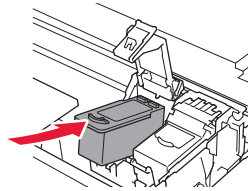


⚠ Important

- Ne touchez pas l'encre se trouvant sur le ruban protecteur. Cela pourrait salir vos mains ou les objets environnants.
- Ne touchez pas les zones présentées dans la figure. Sinon, l'imprimante pourrait ne pas imprimer correctement.

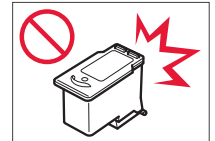


- 4 Installez la cartouche FINE couleur dans le porte-cartouche FINE.

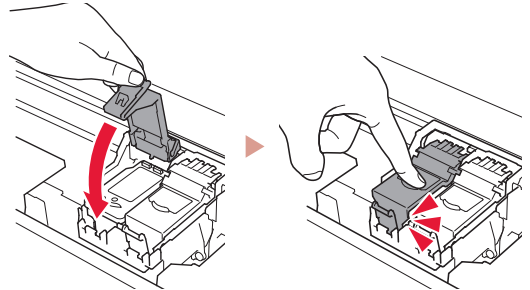


⚠ Important

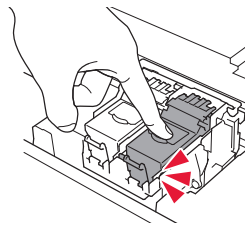
Ne cognez pas la cartouche FINE. Cela risquerait d'entraîner un dysfonctionnement.



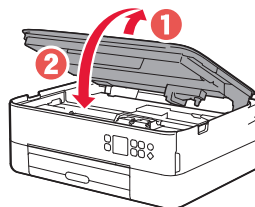
- 5 Poussez fermement vers le bas le couvercle de verrouillage de cartouche d'encre jusqu'au déclic pour le fermer complètement.



- 6 Répétez les étapes 2 à 5 et installez également la cartouche FINE noire sur la droite.



- 7 Fermez l'unité de numérisation / capot.
- L'imprimante commence à s'initialiser.



⚠ Attention

Faites attention à vos doigts.

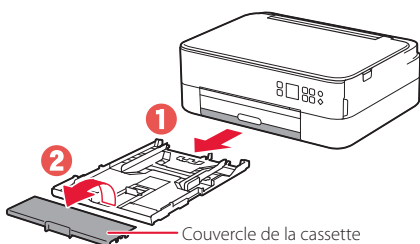
5. Chargement du papier



1 Appuyez sur le bouton **OK**.

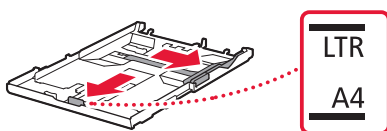


2 Retirez la cassette de l'imprimante et retirez le couvercle de la cassette.



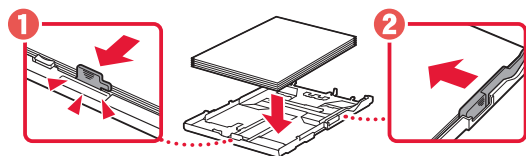
3 Faites glisser séparément les guides papier.

- Faites glisser le guide papier droit vers le bord droit. Alignez le guide papier avant sur la marque Lettre ou A4.

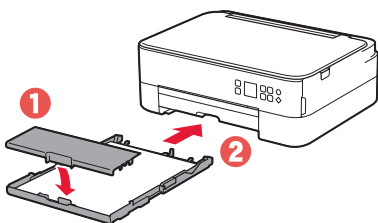


4 Chargez du papier.

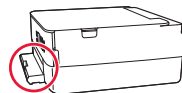
- Chargez au moins 2 feuilles de papier ordinaire au format Lettre ou A4.
- Placez le papier contre le guide papier avant et alignez le guide papier droit sur la largeur du papier.



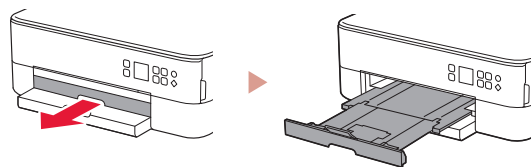
5 Fixez le couvercle de la cassette et remettez la cassette en place.



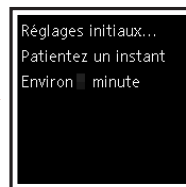
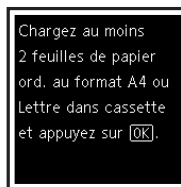
- Observez-la depuis le côté pour confirmer qu'elle se présente comme dans le diagramme.



6 Retirez le bac de sortie papier.



7 Appuyez sur le bouton **OK**.



Remarque

Le processus d'alignement imprimer deux feuilles recto verso.
Ne tirez pas sur le papier ou n'utilisez pas l'imprimante tant que l'alignement n'est pas terminé.

8 Assurez-vous que l'écran suivant s'affiche.



Pour utiliser l'imprimante sans connecter aucun autre périphérique, la configuration est terminée.

Sélectionnez la méthode de connexion correspondant le mieux à la manière dont vous utiliserez l'imprimante.

- Pour utiliser l'imprimante sans connexion à aucun autre périphérique
 - ➔ La configuration est terminée.
- Pour utiliser l'imprimante en la connectant à un ordinateur ou à un smartphone
 - ➔ Passez à la page suivante.

Quel périphérique connectez-vous ?



Ordinateur



Ordinateur et
smartphone





Smartphone

6-a

Connexion à un ordinateur

Si vous utilisez plusieurs ordinateurs, effectuez ces étapes sur chaque ordinateur.



- 1 Accès au site Web Canon à partir de votre ordinateur.
 <https://ij.start.canon>
- 2 Sélectionnez  **Configuration**.
- 3 Entrez le nom de modèle de votre imprimante et cliquez sur **Accéder**.
- 4 Cliquez sur **Démarrer**.
- 5 Cliquez sur **(B) Connexion à un ordinateur/smartphone**.
 - Les étapes suivantes concernent les utilisateurs Windows.
- 6 Cliquez sur **Télécharger**.
- 7 Exécutez le fichier téléchargé.
- 8 Suivez les instructions à l'écran.
 - Ces opérations peuvent prendre du temps.
 - Pour vous connecter aussi à un smartphone, voir « 6-b. Connexion à un smartphone » à la page 5.

6-b

Connexion à un smartphone

Si vous utilisez plusieurs smartphones, effectuez ces étapes sur chaque smartphone.



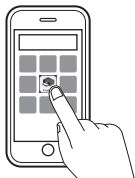
1 Installez l'application « Canon PRINT Inkjet/SELPHY » sur votre smartphone.



- Recherchez « Canon PRINT » dans App Store ou Google Play.
- Accédez au site Web Canon pour télécharger l'application.



2 Ouvrez l'application installée, puis suivez les instructions affichées à l'écran par l'application pour ajouter votre imprimante.

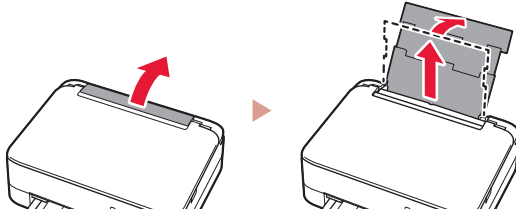


Une fois que vous avez ajouté votre imprimante, vous pouvez imprimer depuis votre smartphone.
Pour imprimer des photos, voir « Chargement de papier photo » à la page 6.

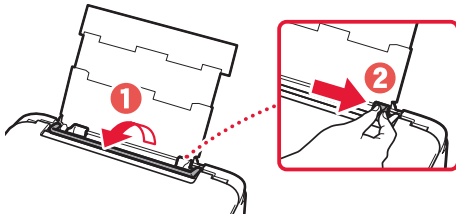
Chargement de papier photo

Le papier photo peut être chargé uniquement dans le réceptacle arrière.

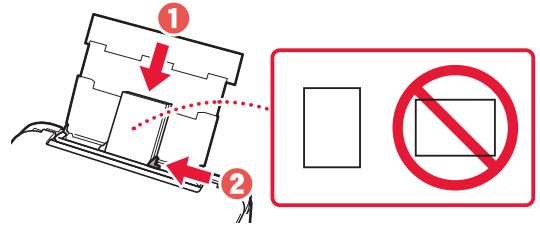
- 1 Ouvrez le couvercle du réceptacle arrière et déployez le support papier.



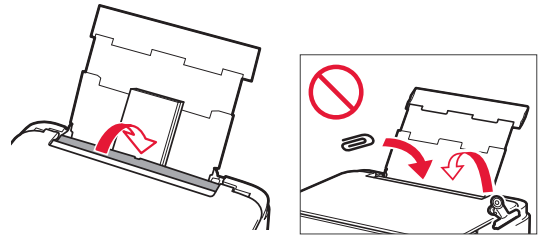
- 2 Ouvrez le couvercle de la fente d'alimentation et faites glisser le guide papier droit vers l'extrême droite.



- 3 Chargez plusieurs feuilles de papier photo face à imprimer vers le haut et faites glisser le guide papier latéral contre le bord de la pile de papier.

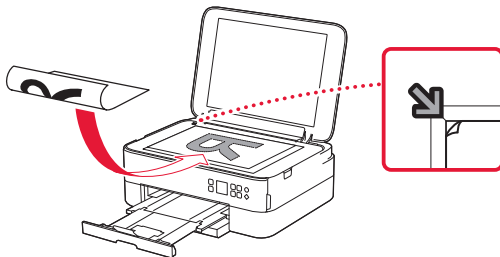


- 4 Fermez le couvercle de la fente d'alimentation.
 - Suivez les instructions à l'écran pour définir les informations sur le papier chargé.



Copie

- 1 Mettez l'imprimante sous tension.
- 2 Chargez du papier ordinaire au format Lettre ou A4.
- 3 Ouvrez le capot du scanner et placez le document face vers le bas sur la vitre d'exposition. Alignez le document avec le repère d'alignement (↘).



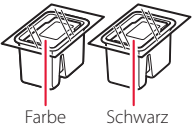
- 4 Fermez le capot du scanner.
- 5 Appuyez sur le bouton **OK**.
- 6 Sélectionnez **Paramètres de copie**, puis appuyez sur le bouton **OK**.
- 7 Spécifiez les paramètres d'impression à l'aide des boutons ▲, ▼ et **OK**.



- 8 Appuyez sur le bouton **Démarrage (Start)**.

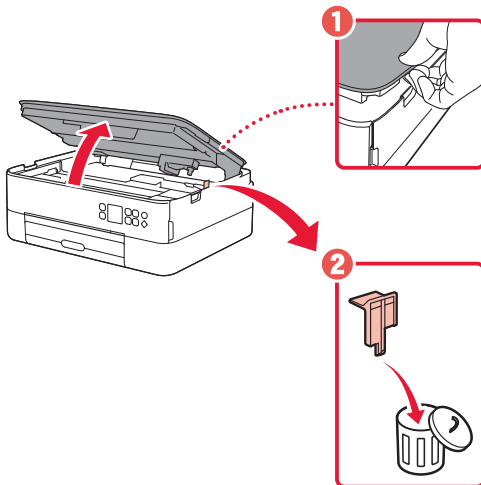
Einrichten des Druckers

1. Inhalt der Box

- FINE-Patronen
 - Netz Kabel
 - Sicherheitsinformationen und wichtige Hinweise
 - Inbetriebnahme (dieses Handbuch)
- 

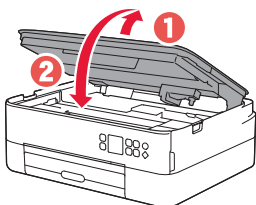
2. Entfernen des Verpackungsmaterials

- 1 Entfernen und entsorgen Sie das gesamte Verpackungsmaterial sowie das orangefarbene Klebeband.
- 2 Öffnen Sie das Scan-Modul/die Abdeckung, entfernen und entsorgen Sie das orangefarbene Klebeband sowie das Schutzmaterial aus dem Inneren.



- 3 Schließen Sie das Scan-Modul/die Abdeckung.

- Öffnen Sie das Scan-Modul/die Abdeckung vollständig und schließen Sie es/sie dann wieder.

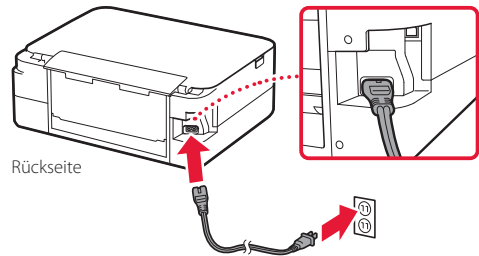


⚠ **Vorsicht**
Passen Sie auf Ihre Finger auf.

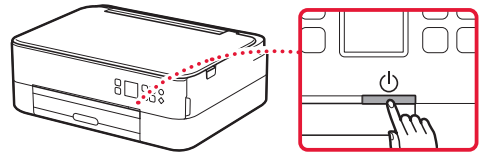
3. Einschalten des Druckers



- 1 Schließen Sie das Netzkabel an.



- 2 Drücken Sie die Taste **EIN (ON)**.



- 3 Verwenden Sie die Tasten ▲ und ▼, um eine Sprache auszuwählen, und drücken Sie anschließend die Taste **OK**.

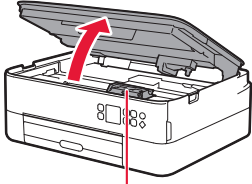


Einrichten des Druckers

4. Einsetzen der FINE-Patronen



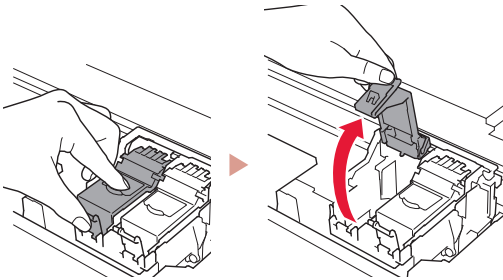
1 Öffnen Sie das Scan-Modul/die Abdeckung.



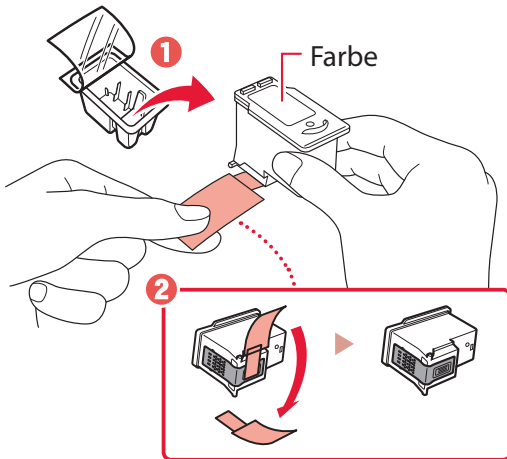
⚠ Vorsicht

Berühren Sie die FINE-Patronen-Halterung nicht, solange sie sich bewegt.

2 Drücken und öffnen Sie die Verriegelung der Tintenpatronen auf der linken Seite.

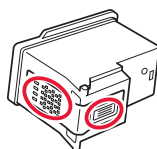


3 Nehmen Sie die farbige FINE-Patrone aus dem Behälter und entfernen Sie das Schutzband.

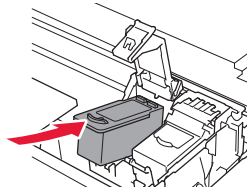


Wichtig

- Berühren Sie nicht die Tinte auf dem Schutzband. Ihre Hände oder Objekte in der Nähe könnten dadurch verschmutzt werden.
- Berühren Sie nicht die in der Abbildung gezeigten Bereiche. Andernfalls druckt der Drucker möglicherweise nicht richtig.

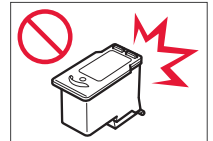


4 Setzen Sie die farbige FINE-Patrone in die FINE-Patronen-Halterung ein.

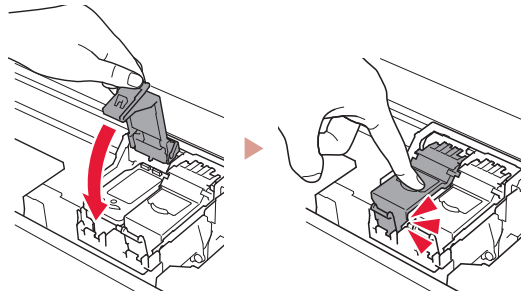


Wichtig

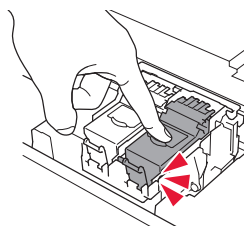
Stoßen Sie mit der FINE-Patrone nirgends an. Dies könnte zu einer Fehlfunktion führen.



5 Drücken Sie die Verriegelung der Tintenpatronen fest nach unten, bis sie einrastet, um diese vollständig zu schließen.

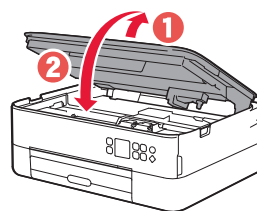


6 Wiederholen Sie die Schritte 2 bis 5 und setzen Sie auch die schwarze FINE-Patrone auf der rechten Seite ein.



7 Schließen Sie das Scan-Modul/die Abdeckung.

- Der Drucker wird initialisiert.



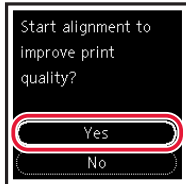
⚠ Vorsicht

Passen Sie auf Ihre Finger auf.

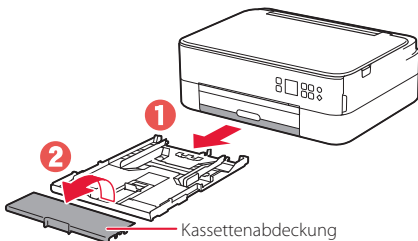
5. Einlegen von Papier



1 Drücken Sie die Taste **OK**.

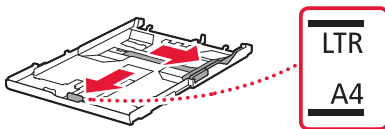


2 Entnehmen Sie die Kassette aus dem Drucker und entfernen Sie die Kassettenabdeckung.



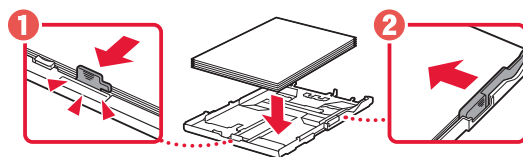
3 Schieben Sie die Papierführungen auseinander.

- Schieben Sie die rechte Papierführung an die rechte Kante. Richten Sie die vordere Papierführung an der Markierung für Letter oder A4 aus.

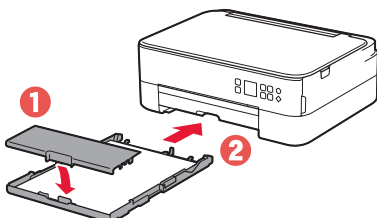


4 Legen Sie Papier ein.

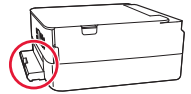
- Legen Sie 2 oder mehr Blatt Normalpapier des Formats Letter oder A4 ein.
- Schieben Sie das Papier gegen die vordere Papierführung und richten Sie die rechte Papierführung an der Breite des Papiers aus.



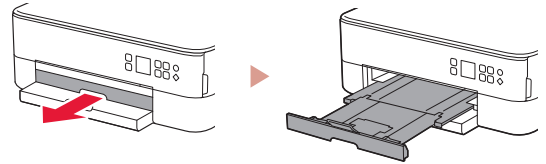
5 Bringen Sie die Kassettenabdeckung an und setzen Sie die Kassette wieder ein.



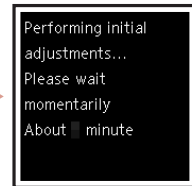
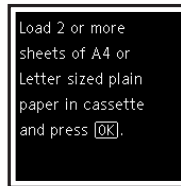
- Sehen Sie es sich von der Seite an und stellen Sie sicher, dass es der Abbildung entspricht.



6 Ziehen Sie das Papierausgabefach heraus.



7 Drücken Sie die Taste **OK**.



»»» Hinweis

Während der Ausrichtung werden zwei doppelseitig bedruckte Blätter ausgegeben.

Ziehen Sie das Papier nicht heraus und verwenden Sie den Drucker nicht, bis die Ausrichtung abgeschlossen wurde.

8 Überprüfen Sie, ob der folgende Bildschirm angezeigt wird.



Wenn Sie den Drucker ohne Anschluss weiterer Geräte verwenden, ist die Einrichtung nun abgeschlossen.

Wählen Sie die Verbindungsmethode aus, die der späteren Verwendung des Druckers am besten entspricht.

- Verwenden des Druckers ohne Anschluss weiterer Geräte
 - ➔ Die Einrichtung ist jetzt abgeschlossen.
- Verwenden des Druckers, indem eine Verbindung mit einem Computer oder Smartphone hergestellt wird
 - ➔ Fahren Sie auf der nächsten Seite fort.

Mit welchem Gerät stellen Sie eine Verbindung her?



Computer



Computer und
Smartphone





Smartphone

6-a

Herstellen einer Verbindung mit einem Computer

Wenn Sie mehrere Computer verwenden, führen Sie diese Schritte auf jedem Computer aus.



- 1 Greifen Sie von Ihrem Computer aus auf die Canon-Website zu.
 <https://ij.start.canon>
- 2 Wählen Sie  **Einrichten** aus.
- 3 Geben Sie den Modellnamen Ihres Druckers ein und klicken Sie auf **Los**.
- 4 Klicken Sie auf **Start**.
- 5 Klicken Sie auf **(B) Herstellen einer Verbindung mit einem Computer/Smartphone**.
 - Die folgenden Schritte gelten für Benutzer von Windows.
- 6 Klicken Sie auf **Herunterladen**.
- 7 Führen Sie die heruntergeladene Datei aus.
- 8 Befolgen Sie die Anweisungen auf dem Bildschirm.
 - Diese Verfahren können einige Zeit dauern.
 - Um auch eine Verbindung mit einem Smartphone herzustellen, lesen Sie „6-b. Herstellen einer Verbindung mit einem Smartphone“ auf Seite 5.

6-b

Herstellen einer Verbindung mit einem Smartphone

Wenn Sie mehrere Smartphones verwenden, führen Sie diese Schritte auf jedem Smartphone aus.



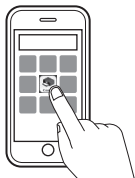
1 Installieren Sie die App „Canon PRINT Inkjet/SELPHY“ auf Ihrem Smartphone.



- Suchen Sie „Canon PRINT“ im App Store oder in Google Play.
- Rufen Sie die Canon-Website auf, um die App herunterzuladen.



2 Öffnen Sie die installierte App und befolgen Sie die Anweisungen in der App, um Ihren Drucker hinzuzufügen.

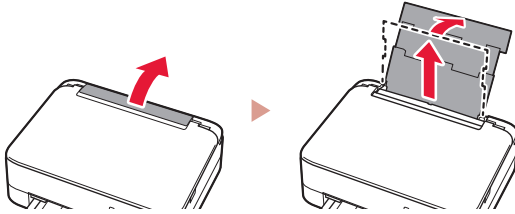


Sobald Sie Ihren Drucker hinzugefügt haben, können Sie über Ihr Smartphone drucken.
Informationen zum Drucken von Fotos finden Sie unter „Einlegen von Fotopapier“ auf Seite 6.

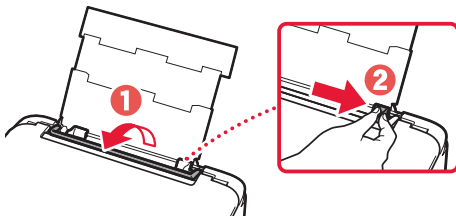
Einlegen von Fotopapier

Fotopapier kann nur in das hintere Fach eingelegt werden.

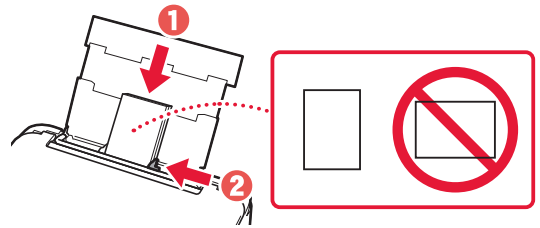
- 1 Öffnen Sie die Abdeckung des hinteren Fachs und ziehen Sie die Papierstütze heraus.



- 2 Öffnen Sie die Abdeckung für den Einzugschacht und schieben Sie die rechte Papierführung ganz nach rechts.

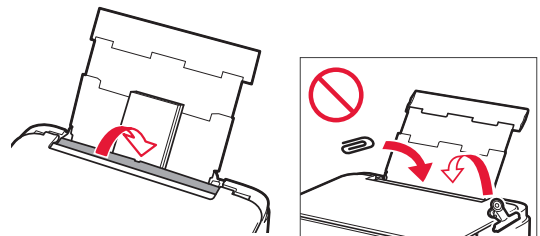


- 3 Legen Sie mehrere Blätter Fotopapier mit der bedruckbaren Seite nach oben ein und schieben Sie die seitliche Papierführung gegen die Kante des Papierstapels.



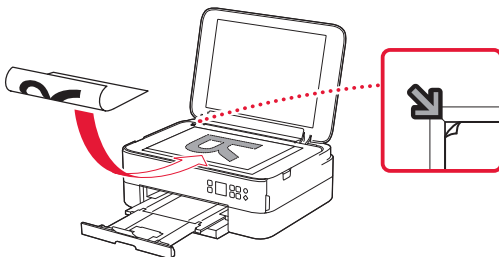
- 4 Schließen Sie die Abdeckung für den Einzugschacht.

- Befolgen Sie die Anweisungen auf dem Bildschirm, um Informationen für das eingelegte Papier festzulegen.



Kopieren

- 1 Schalten Sie den Drucker ein.
- 2 Legen Sie Normalpapier des Formats Letter oder A4 ein.
- 3 Öffnen Sie die Vorlagenabdeckung und legen Sie das Dokument mit der bedruckbaren Seite nach unten auf die Auflage. Richten Sie das Dokument an der Ausrichtungsmarkierung (↘) aus.



- 4 Schließen Sie die Vorlagenabdeckung.
- 5 Drücken Sie die Taste **OK**.
- 6 Wählen Sie **Kopiereinstellungen (Copy settings)** aus und drücken Sie dann die Taste **OK**.
- 7 Legen Sie die Druckinformationen mit den Tasten ▲, ▼ und **OK** fest.

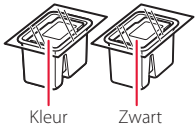


- 8 Drücken Sie die Taste **Start**.

De printer instellen

1. Inhoud van de doos

• FINE-cartridges



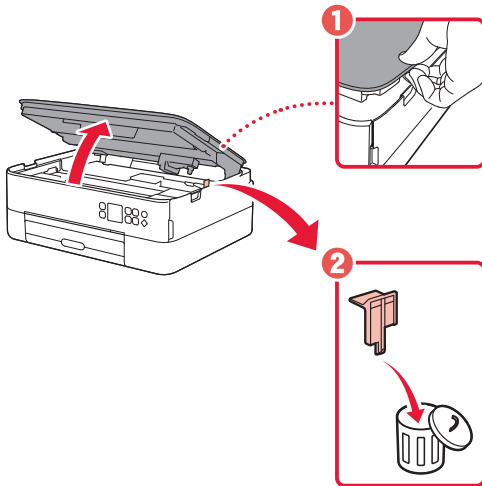
• Netsnoer

- Veiligheidsinformatie en belangrijke informatie
- Aan de Slag-gids (deze handleiding)

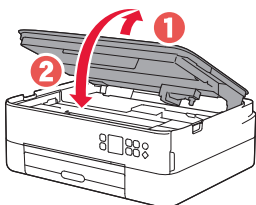
2. Verpakkingsmateriaal verwijderen



- 1 Verwijder het verpakkingsmateriaal en de oranje tape en gooi het weg.
- 2 Open de scaneenheid / klep, verwijder de oranje tape en het beschermende materiaal erin en gooi het weg.



- 3 Sluit de scaneenheid / klep.
 - Open de scaneenheid / klep volledig en sluit deze vervolgens.

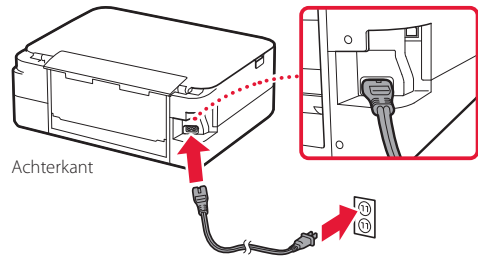


⚠ Let op
Kijk uit met uw vingers.

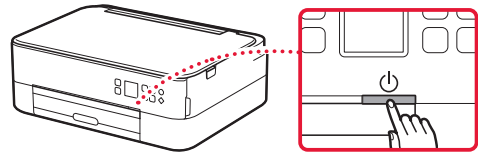
3. De printer inschakelen



- 1 Sluit het netsnoer aan.



- 2 Druk op de knop **AAN (ON)**.



- 3 Gebruik de knoppen ▲ en ▼ om een taal te selecteren en druk vervolgens op de knop **OK**.

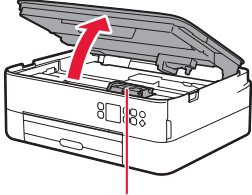


De printer instellen

4. De FINE-cartridges installeren



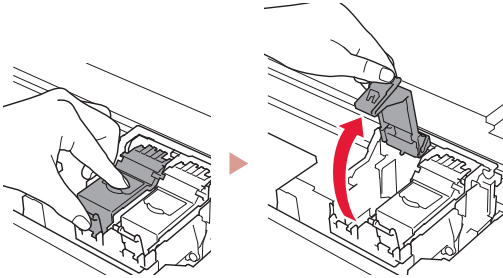
1 Open de scaneenheid / klep.



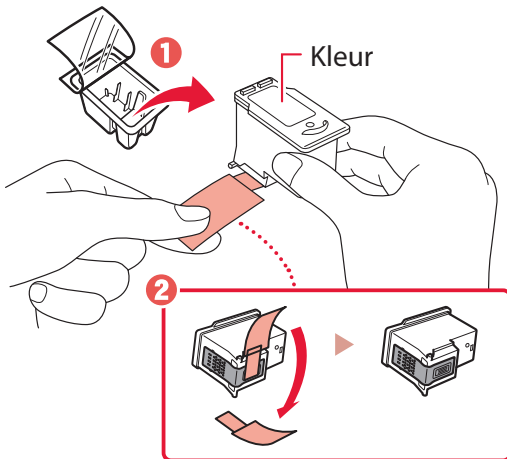
⚠ Let op

Raak de FINE-cartridgehouder niet aan totdat deze stopt met bewegen.

2 Knijp in het sluitklepje van de inktcartridge aan de linkerzijde en open het.

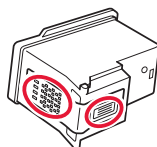


3 Haal de kleuren FINE-cartridge uit de verpakking en verwijder de beschermende tape.

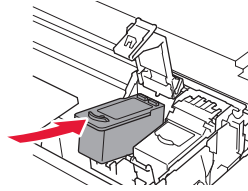


⚠⚠⚠ Belangrijk

- Raak de inkt op de beschermende tape niet aan. Deze kan vlekken veroorzaken op uw handen of op voorwerpen in de buurt.
- Raak de aangegeven gebieden in de afbeelding niet aan. De printer kan anders mogelijk niet correct afdrucken.

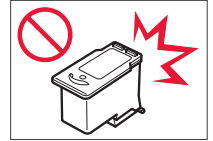


4 Plaats de kleuren FINE-cartridge in de FINE-cartridgehouder.

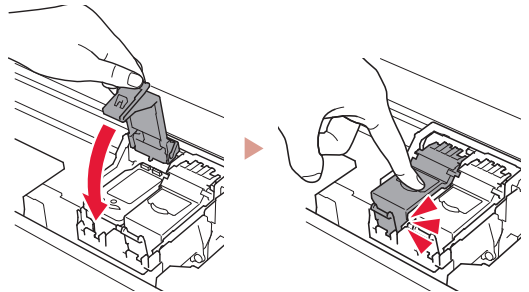


⚠⚠⚠ Belangrijk

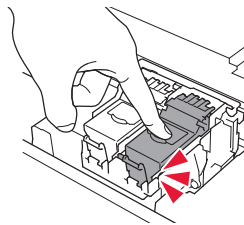
Stoot niet tegen de FINE-cartridge. Als u dat wel doet, kan dit leiden tot defecten.



5 Duw het sluitklepje van de inktcartridge stevig omlaag totdat dit op zijn plaats klikt en volledig is gesloten.

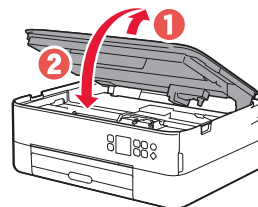


6 Herhaal stap 2 tot en met 5 om ook de zwarte FINE-cartridge aan de rechterkant te plaatsen.



7 Sluit de scaneenheid / klep.

- De initialisatie van de printer wordt gestart.



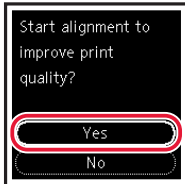
⚠ Let op

Kijk uit met uw vingers.

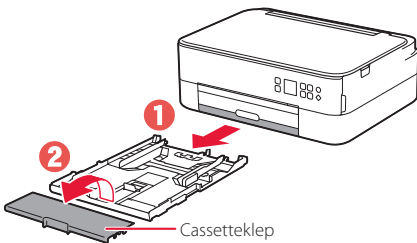
5. Papier plaatsen



1 Druk op de knop **OK**.

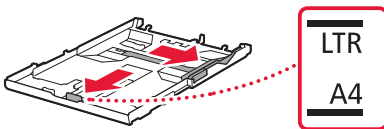


2 Verwijder de cassette uit de printer en verwijder de cassetteklep.



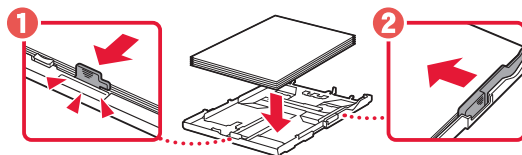
3 Schuif de papiergeleiders uit elkaar.

- Schuif de rechterpapiergeleider naar de rechterraand. Lijn de voorste papiergeleider uit met de markering Letter of A4.

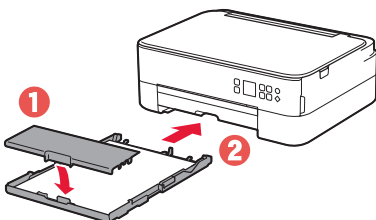


4 Plaats papier.

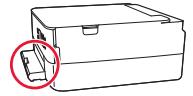
- Plaats 2 of meer vellen normaal papier van Letter- of A4-formaat.
- Plaats het papier tegen de voorste papiergeleider en lijn de rechterpapiergeleider uit met de breedte van het papier.



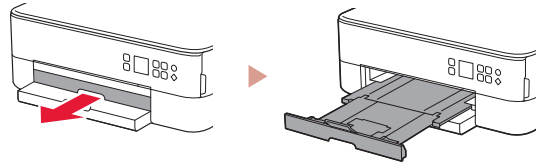
5 Bevestig de cassetteklep en plaats de cassette terug.



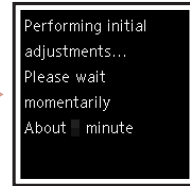
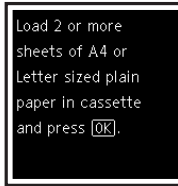
- Kijk vanaf de zijkant om te controleren of het eruitziet zoals in de afbeelding.



6 Trek de papieruitvoerlade uit.



7 Druk op de knop **OK**.



Opmerking

Tijdens het uitlijningsproces worden twee dubbelzijdige vellen afgedrukt.

Trek het papier er niet uit en gebruik de printer pas nadat de uitlijning is voltooid.

8 Controleer of het volgende scherm verschijnt.



Als u de printer wilt gebruiken zonder deze met andere apparaten te verbinden, is de installatie nu voltooid.

Selecteer de verbindingmethode die het beste past bij de manier waarop u de printer gebruikt.

- Als u de printer wilt gebruiken zonder deze met andere apparaten te verbinden
 - ➔ De installatie is nu voltooid.
- De printer gebruiken door deze met een computer of smartphone te verbinden
 - ➔ Ga verder naar de volgende pagina.

Met welk apparaat maakt u verbinding?



Computer



Computer en
smartphone



Smartphone

6-a

Verbinden met een computer

Als u meerdere computers gebruikt, voert u deze stappen uit op elke computer.



- 1 Ga naar de Canon-website op uw computer.
 <https://ij.start.canon>
- 2 Selecteer  **Installatie**.
- 3 Voer de modelnaam van de printer in en klik op **Ga**.
- 4 Klik op **Start**.
- 5 Klik op **(B) Verbinding maken met een computer/smartphone**.
 - De volgende stappen zijn bedoeld voor Windows-gebruikers.
- 6 Klik op **Downloaden**.
- 7 Voer het gedownloadde bestand uit.
- 8 Volg de instructies op het scherm.
 - Deze handelingen kunnen enige tijd duren.
 - Als u ook verbinding wilt maken met een smartphone, raadpleegt u "6-b. Verbinden met een smartphone" op pagina 5.

6-b

Verbinden met een smartphone

Als u meerdere smartphones gebruikt, voert u deze stappen uit op elke smartphone.



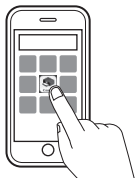
1 Installeer de app "Canon PRINT Inkjet/SELPHY" op uw smartphone.



- Zoek "Canon PRINT" in App Store of Google Play.
- Ga naar de Canon-website om de app te downloaden.



2 Open de geïnstalleerde app en volg de instructies in de app om uw printer toe te voegen.



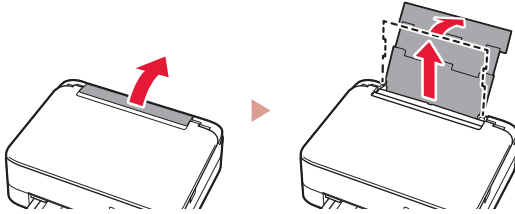
Nadat u de printer hebt toegevoegd, kunt u afdrukken vanaf uw smartphone.

Als u foto's wilt afdrukken, raadpleegt u "Fotopapier plaatsen" op pagina 6.

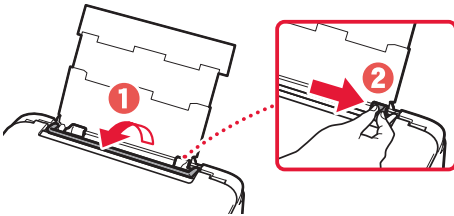
Fotopapier plaatsen

Fotopapier kan alleen in de achterste lade worden geplaatst.

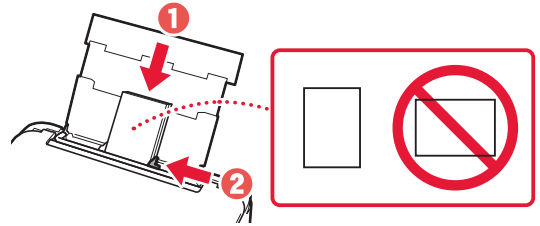
- 1 Open de klep van de achterste lade en trek de papiersteun uit.



- 2 Open het klepje over de invoersleuf en schuif de papiergeleider aan de rechterkant helemaal naar rechts.

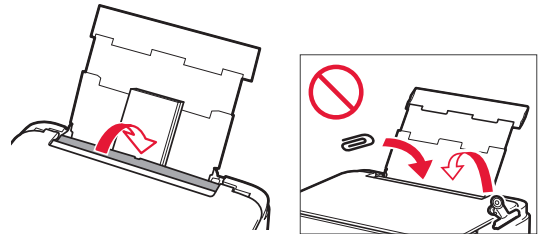


- 3 Plaats meerdere vellen fotopapier met de afdrukkzijde omhoog en schuif de papiergeleider aan de zijkant tegen de rand van de stapel papier.



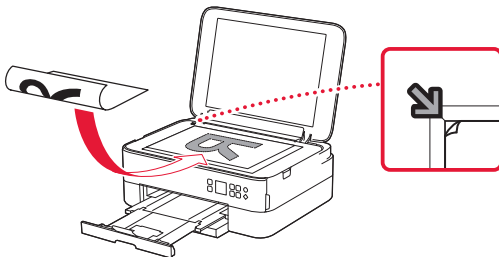
- 4 Sluit het klepje over de invoersleuf.

- Volg de instructies op het scherm om informatie over het geplaatste papier in te stellen.



Kopiëren

- 1 Zet de printer aan.
- 2 Plaats normaal papier van Letter- of A4-formaat.
- 3 Open de documentklep en plaats het document met de bovenzijde omlaag op de plaat. Lijn het document uit met de positiemarkering (↘).



- 4 Sluit de documentklep.
- 5 Druk op de knop **OK**.
- 6 Selecteer **Kopieerinstellingen (Copy settings)** en druk vervolgens op de knop **OK**.
- 7 Geef afdrুকinstellingen op met behulp van de knoppen ▲, ▼ en **OK**.

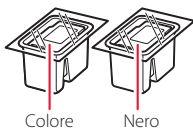


- 8 Druk op de knop **Starten (Start)**.

Impostazione della stampante

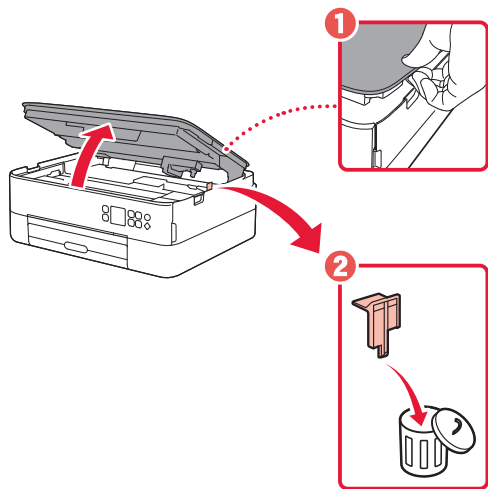
1. Contenuto della scatola

- Cartucce FINE
- Cavo di alimentazione
- Informazioni importanti e sulla sicurezza
- Guida Rapida (questo manuale)

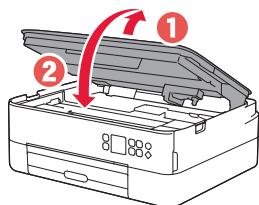


2. Rimozione del materiale da imballaggio

- 1 Rimuovere e disfarsi di eventuale materiale da imballaggio e del nastro arancione.
- 2 Aprire l'unità di scansione / coperchio, rimuovere e disfarsi del nastro arancione e del materiale di protezione all'interno.



- 3 Chiedere l'unità di scansione / coperchio.
 - Aprire completamente l'unità di scansione / coperchio, quindi chiuderla.

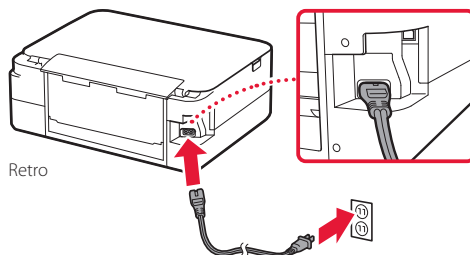


▲ **Attenzione**
Fare attenzione alle dita.

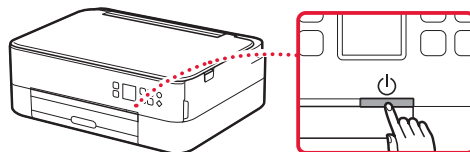
3. Accensione della stampante



- 1 Collegare il cavo di alimentazione.



- 2 Premere il pulsante **ON**.



- 3 Utilizzare i pulsanti ▲ e ▼ per selezionare una lingua, quindi premere il pulsante **OK**.

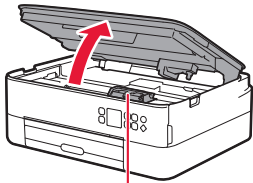


Impostazione della stampante

4. Installazione delle cartucce FINE



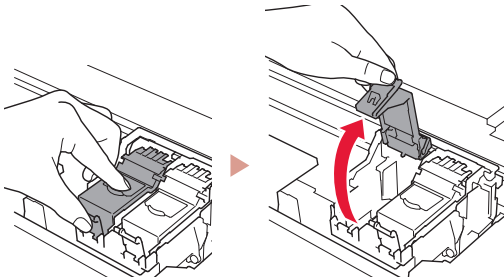
1 Aprire l'unità di scansione / coperchio.



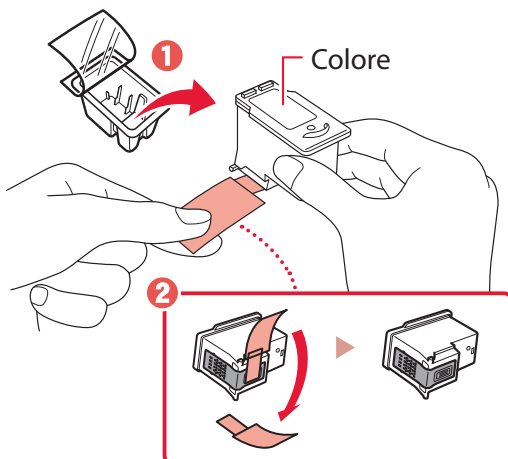
⚠ Attenzione

Non toccare il supporto cartuccia FINE fino a che non si ferma.

2 Prendere con due dita e aprire il coperchio di bloccaggio della cartuccia di inchiostro sul lato sinistro.

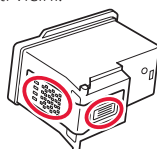


3 Rimuovere la cartuccia FINE del colore dal contenitore e rimuovere il nastro protettivo.

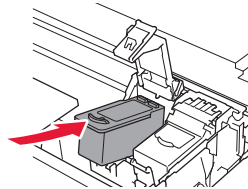


»»» Importante

- Non toccare l'inchiostro presente sul nastro protettivo. Potrebbe macchiare le mani o altri oggetti vicini.
- Non toccare le aree mostrate nella figura. Altrimenti, la stampante potrebbe non stampare correttamente.

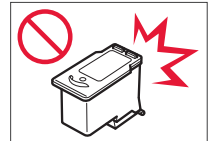


4 Installare la cartuccia FINE del colore nel supporto cartuccia FINE.

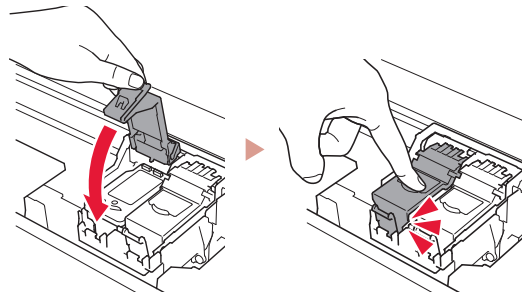


»»» Importante

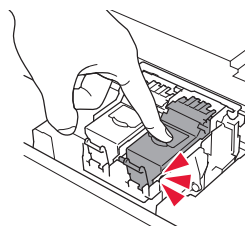
Non scuotere la cartuccia FINE. Ciò potrebbe causare un malfunzionamento.



5 Spingere con fermezza verso il basso il coperchio di bloccaggio della cartuccia di inchiostro finché non scatta in posizione per chiuderlo completamente.

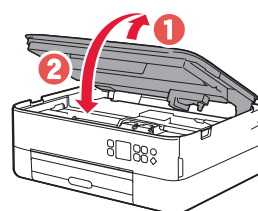


6 Ripetere i passi da 2 a 5 e installare anche la cartuccia FINE del nero sul lato destro.



7 Chiudere l'unità di scansione / coperchio.

- Verrà avviata l'inizializzazione della stampante.



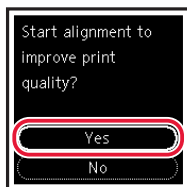
⚠ Attenzione

Fare attenzione alle dita.

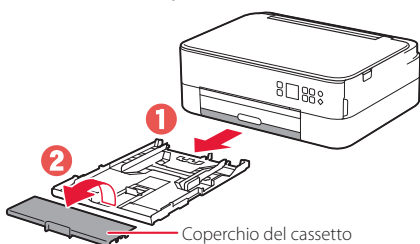
5. Caricamento della carta



1 Premere il pulsante **OK**.

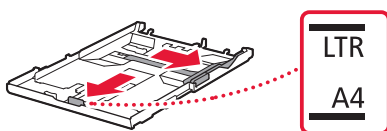


2 Rimuovere il cassetto dalla stampante, quindi rimuovere il coperchio del cassetto.



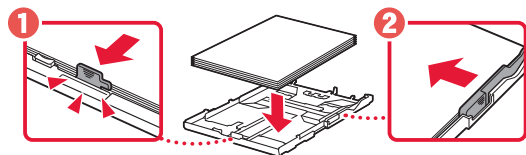
3 Far scorrere le guide della carta.

- Far scorrere la guida della carta di destra verso il margine destro. Allineare la guida della carta anteriore con il segno Letter o A4.

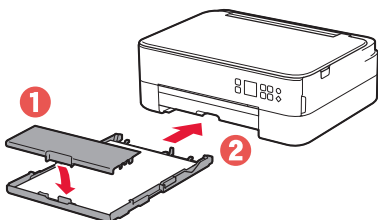


4 Caricare la carta.

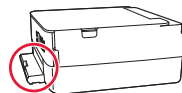
- Caricare 2 o più fogli di carta comune in formato Letter o A4.
- Posizionare la carta contro la guida della carta anteriore e allineare la guida della carta di destra alla larghezza della carta.



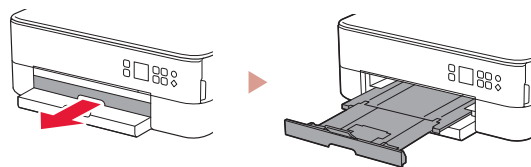
5 Collegare il coperchio del cassetto e reinserire il cassetto.



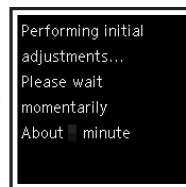
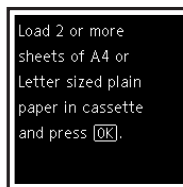
- Guardarlo lateralmente per assicurarsi che assomiglia al disegno.



6 Estrarre il vassoio di uscita della carta.



7 Premere il pulsante **OK**.



Nota

Il processo di allineamento richiede la stampa di due fogli fronte-retro.

Non estrarre la carta e non utilizzare la stampante fino al termine dell'allineamento.

8 Verificare che venga visualizzata la schermata seguente.



Se si intende utilizzare la stampante senza connettersi ad altre periferiche, l'impostazione è ora completata.

Selezionare il metodo di connessione che più si adatta al modo in cui si utilizzerà la stampante.

- Per utilizzare la stampante senza connettersi ad altre periferiche
 - ➔ L'impostazione è ora completata.
- Per utilizzare la stampante stabilendo una connessione a un computer o uno smartphone
 - ➔ Procedere alla pagina successiva.

Quale periferica si sta connettendo?



Computer



Computer e
smartphone





Smartphone

6-a

Connessione a un computer

Se si utilizzano più computer, eseguire questi passaggi su ciascun computer.



- 1 Accedere al sito Web di Canon dal computer.
 <https://ij.start.canon>
- 2 Selezionare  **Impostazione**.
- 3 Immettere il nome del modello della stampante e fare clic su **Vai**.
- 4 Fare clic su **Avvio**.
- 5 Fare clic su **(B) Connessione a un computer/uno smartphone**.
 - Le seguenti procedure sono destinate agli utenti Windows.
- 6 Fare clic su **Scarica**.
- 7 Eseguire il file scaricato.
- 8 Seguire le istruzioni visualizzate sullo schermo.
 - Queste operazioni possono richiedere del tempo.
 - Per connettersi anche a uno smartphone, vedere "6-b. Connessione a uno smartphone" a pagina 5.

6-b

Connessione a uno smartphone

Se si utilizzano più smartphone, eseguire questi passaggi su ciascuno smartphone.



1 Installare l'app "Canon PRINT Inkjet/SELPHY" sullo smartphone.



- Cercare "Canon PRINT" in App Store o Google Play.
- Accedere al sito Web Canon per scaricare l'app.



2 Aprire l'app installata e seguire le istruzioni visualizzate nell'app per aggiungere la stampante.

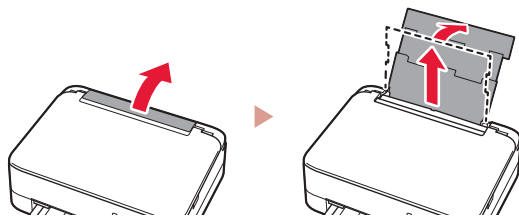


Una volta aggiunta la stampante, è possibile stampare dallo smartphone.
Per stampare foto, vedere "Caricamento della carta fotografica" a pagina 6.

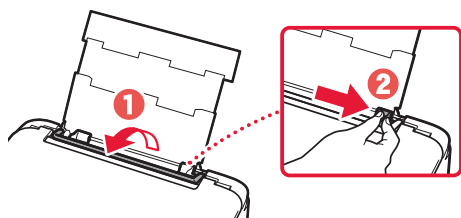
Caricamento della carta fotografica

La carta fotografica può essere caricata solo nel vassoio posteriore.

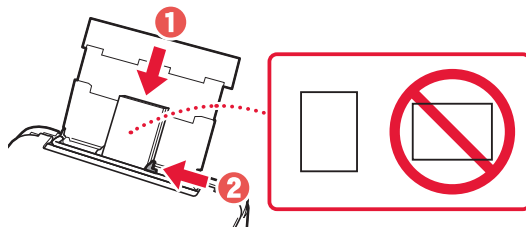
- 1 Aprire il coperchio del vassoio posteriore ed estendere il supporto per la carta.



- 2 Aprire il coperchio dell'alimentatore manuale e far scorrere la guida della carta di destra verso l'estrema destra.

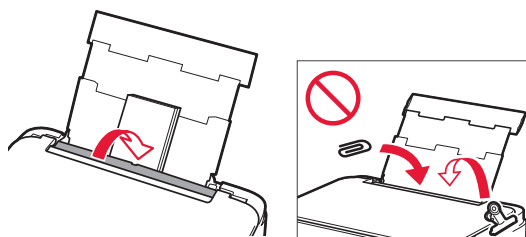


- 3 Caricare diversi fogli di carta fotografica con il lato di stampa rivolto verso l'alto e far scorrere la guida della carta laterale contro il bordo della risma di carta.



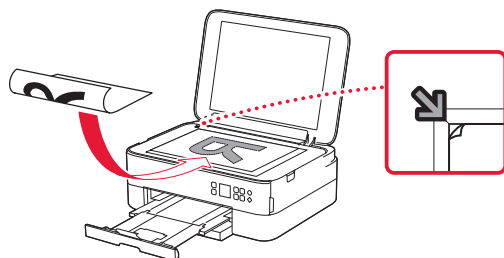
- 4 Chiudere il coperchio dell'alimentatore manuale.

- Seguire le istruzioni visualizzate sullo schermo per impostare le informazioni per la carta caricata.



Copia

- 1 Accendere la stampante.
- 2 Caricare carta comune in formato Letter o A4.
- 3 Aprire il coperchio dei documenti e posizionare il documento rivolto verso il basso sul piano di lettura. Allineare il documento al segno di allineamento (↘).



- 4 Chiudere il coperchio dei documenti.
- 5 Premere il pulsante **OK**.
- 6 Selezionare **Copia impostazioni (Copy settings)**, quindi premere il pulsante **OK**.
- 7 Specificare le impostazioni di stampa utilizzando i pulsanti ▲, ▼ e **OK**.

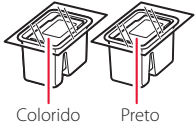


- 8 Premere il pulsante **Avvio (Start)**.

Configurando a impressora

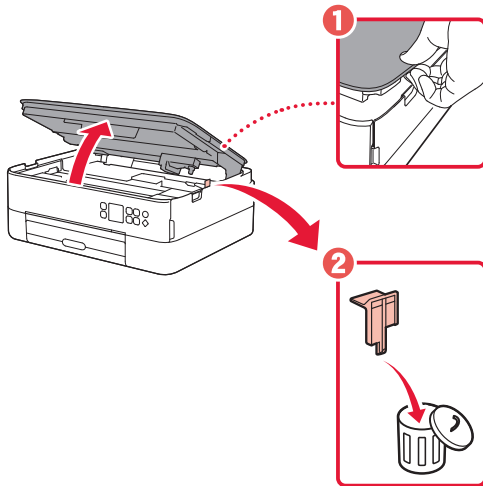
1. Conteúdo da Caixa

- Cartuchos FINE
 - Cabo de alimentação
 - Informações Importantes e Sobre Segurança
 - Para Começar (este manual)
- Colorido Preto

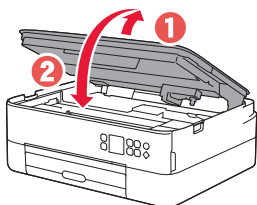


2. Removendo os materiais da embalagem

- 1 Remova e descarte quaisquer materiais de embalagem e a fita laranja.
- 2 Abra a unidade de digitalização/tampa, remova e descarte a fita laranja e o material de proteção que estão dentro.



- 3 Feche a unidade de digitalização/tampa.
 - Abra totalmente a unidade de digitalização/tampa e feche em seguida.

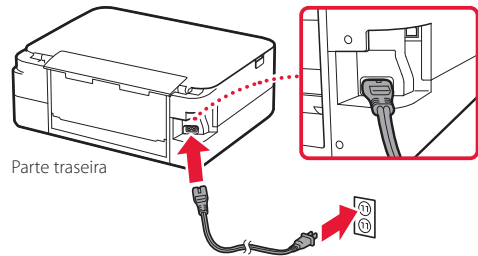


▲ Cuidado
Cuidado com seus dedos.

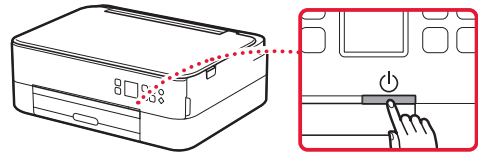
3. Ligando a Impressora



- 1 Conecte o cabo de alimentação.



- 2 Pressione o botão **ATIVADO (ON)**.



- 3 Use os botões ▲ e ▼ para selecionar um idioma e pressione o botão **OK**.

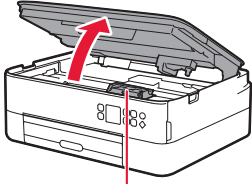


Configurando a impressora

4. Instalando os Cartuchos FINE



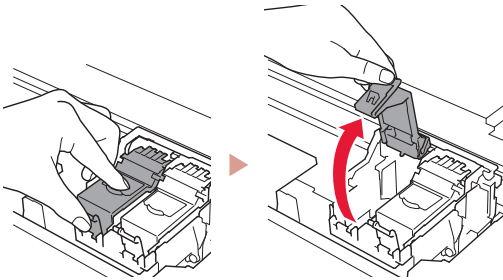
- 1 Abra a unidade de digitalização/tampa.



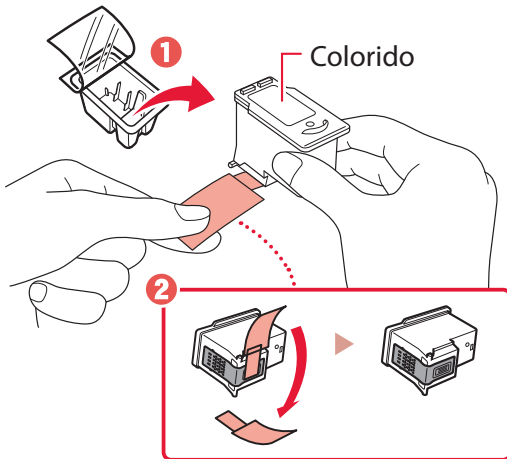
⚠ Cuidado

Não toque no suporte do cartucho FINE antes de ele parar de se mover.

- 2 Puxe e abra a tampa de fixação do cartucho de tinta no lado esquerdo.

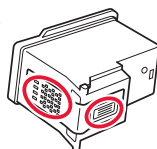


- 3 Remova o Cartucho FINE colorido do recipiente e remova a fita de proteção.

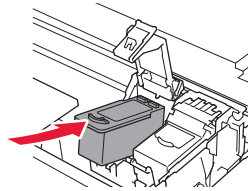


▶▶▶ Importante

- Não toque na tinta na fita de proteção. Ela pode manchar suas mãos ou os objetos em volta.
- Não toque nas áreas mostradas na figura. Caso contrário, a impressora pode não imprimir corretamente.

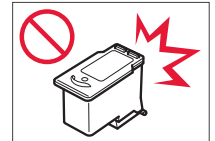


- 4 Coloque o Cartucho FINE colorido no suporte de cartucho FINE.

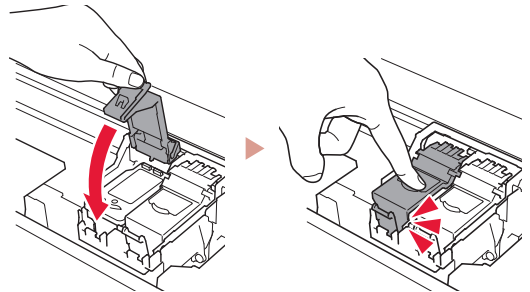


▶▶▶ Importante

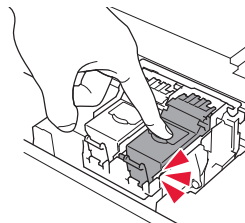
Não bata o cartucho FINE. Fazer isso pode causar problemas de funcionamento.



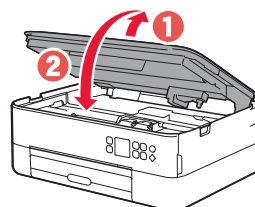
- 5 Empurre para baixo a tampa de fixação do cartucho de tinta firmemente até encaixar para fechá-la completamente.



- 6 Repita as etapas 2 a 5 e instale também o cartucho FINE preto no lado direito.



- 7 Feche a unidade de digitalização/tampa.
- A impressora será inicializada.



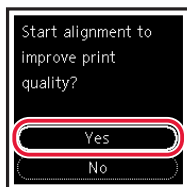
⚠ Cuidado

Cuidado com seus dedos.

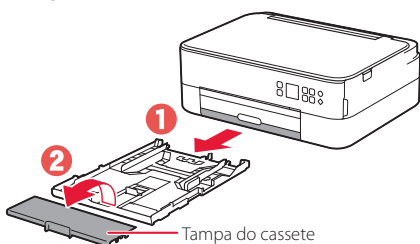
5. Colocando papel



1 Pressione o botão **OK**.

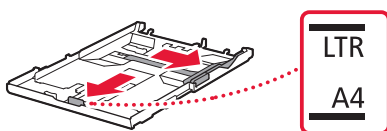


2 Remova o cassete da impressora e remova a tampa do cassete.



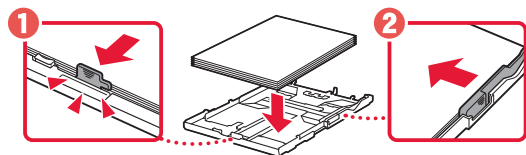
3 Deslize as guias do papel.

- Deslize a guia do papel direita até a borda direita. Alinhe a guia do papel frontal com a marcação Letter ou A4.

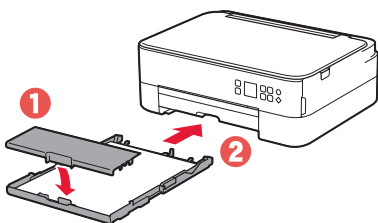


4 Coloque o papel.

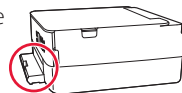
- Coloque 2 ou mais folhas de papel comum de tamanho A4 ou Carta.
- Coloque o papel na guia do papel frontal e alinhe a guia do papel direita com a largura do papel.



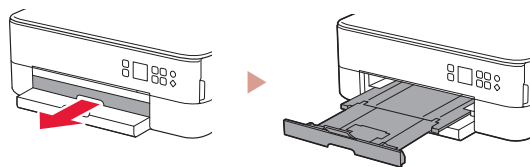
5 Coloque a tampa do cassete e substitua o cassete.



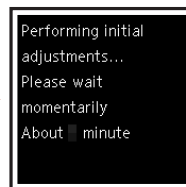
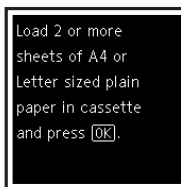
- Olhe pela lateral para confirmar se parece com o diagrama.



6 Puxe bandeja de saída do papel.



7 Pressione o botão **OK**.



Nota

O processo de alinhamento imprime duas folhas de dupla face. Não retire o papel nem use a impressora até o alinhamento estar completo.

8 Verifique se a tela a seguir aparece.



Se você for usar a impressora sem conectar nenhum outro dispositivo, a configuração estará concluída.

Selecione o método de conexão que melhor se adequa ao seu uso da impressora.

- Para usar a impressora sem conectá-la a nenhum outro dispositivo
 - ➔ A configuração foi concluída.
- Para utilizar a impressora com conexão a um computador ou smartphone
 - ➔ Prossiga para a página seguinte.

Qual dispositivo você está conectando?



Computador



Computador e
smartphone



Smartphone

6-a

Conectando a um Computador

Se você estiver usando vários computadores, execute estas etapas em cada computador.



- 1 Acesse o site Canon do seu computador.
 <https://ij.start.canon>
- 2 Selecione  **Configurar**.
- 3 Insira o nome do modelo da sua impressora e clique em **Ir**.
- 4 Clique em **Iniciar**.
- 5 Clique em **(B) Conectar a um Computador/Smartphone**.
 - As etapas a seguir são para usuários do Windows.
- 6 Clique em **Download**.
- 7 Execute o arquivo baixado.
- 8 Siga as instruções na tela.
 - Estas operações podem levar algum tempo.
 - Para conectar a um smartphone também, consulte "6-b. Conectando a um smartphone" na página 5.

6-b

Conectando a um smartphone

Se você estiver usando vários smartphones, execute estas etapas em cada smartphone.



1 Instale o aplicativo "Canon PRINT Inkjet/SELPHY" no seu smartphone.



- Procure por "Canon PRINT" na App Store, ou Google Play.
- Acesse o site Canon para fazer o download do aplicativo.



2 Abra o aplicativo instalado e siga as instruções para adicionar sua impressora.

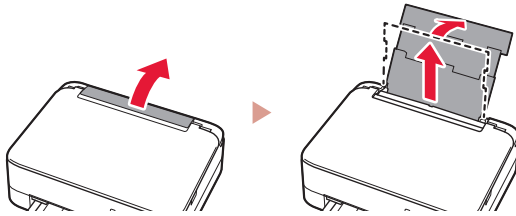


Depois que você adicionar a impressora, poderá imprimir a partir do smartphone.
Para imprimir fotos, consulte "Colocando Papel Fotográfico" na página 6.

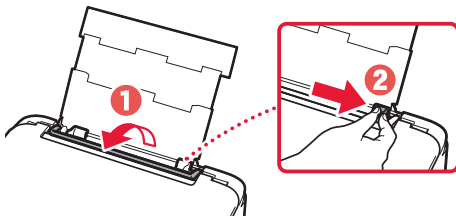
Colocando Papel Fotográfico

Papel fotográfico só pode ser carregado na bandeja traseira.

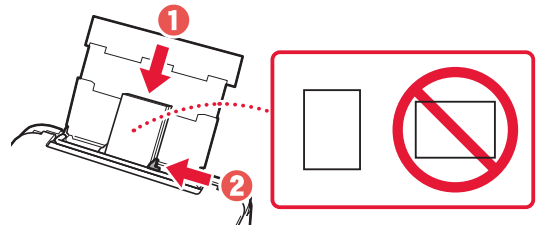
- 1 Abra a tampa da bandeja traseira e estenda o suporte de papel.



- 2 Abra a tampa do slot de alimentação e deslize a guia do papel do lado direito para a extrema direita.

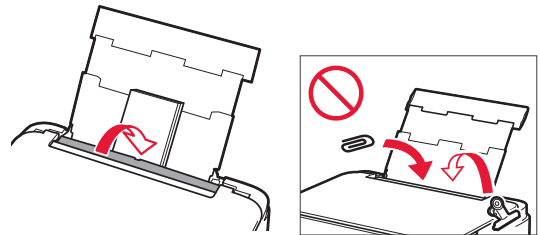


- 3 Carregue várias folhas de papel fotográfico com o lado a ser impresso virado para cima e deslize a guia do papel em direção à borda da pilha de papel.



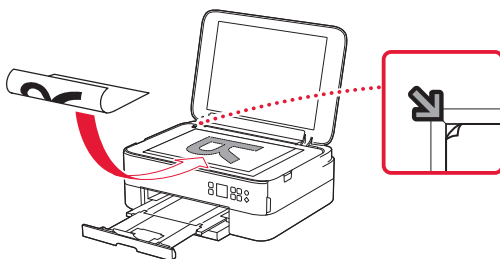
- 4 Feche a tampa do slot de alimentação.

- Siga as instruções na tela para definir informações sobre o papel carregado.



Copiando

- 1 Ligue a Impressora.
- 2 Coloque o papel comum de tamanho A4 ou Carta.
- 3 Abra a tampa de documentos e coloque o documento voltado para baixo no rolo pressor. Posicione o documento com a marca de alinhamento (↘).



- 4 Feche a tampa de documentos.
- 5 Pressione o botão **OK**.
- 6 Selecione **Copiar configurações (Copy settings)** e pressione o botão **OK**.
- 7 Especifique as configurações de impressão usando os botões **▲**, **▼** e **OK**.

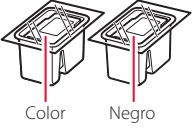


- 8 Pressione o botão **Iniciar (Start)**.

Instalación de la impresora

1. Contenido de la caja

- Cartuchos FINE



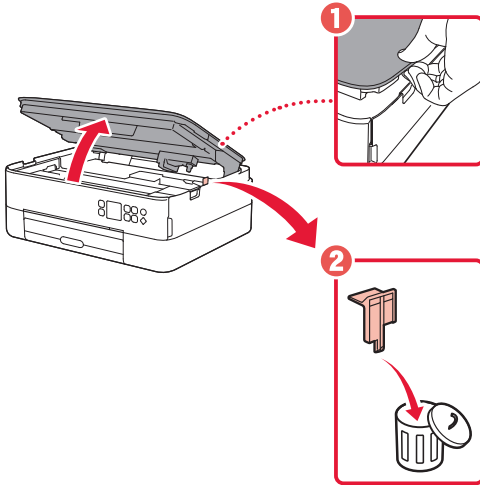
Color

Negro

- Cable de alimentación
- Información de seguridad e información importante
- Guía de inicio (este manual)

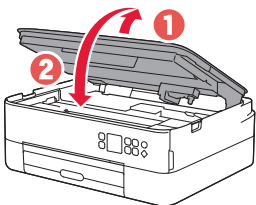
2. Retirar los materiales de protección

- 1 Retire y tire los materiales de protección y la cinta naranja.
- 2 Abra la cubierta/unidad de escaneado, retire y tire la cinta naranja y el material de protección que hay dentro.



- 3 Cierre la cubierta/unidad de escaneado.

- Abra la cubierta/unidad de escaneado completamente y luego ciérrala.



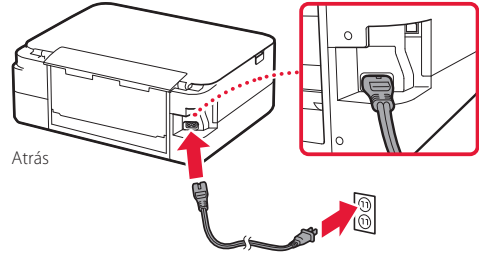
⚠ Precaución

Tenga cuidado con los dedos.

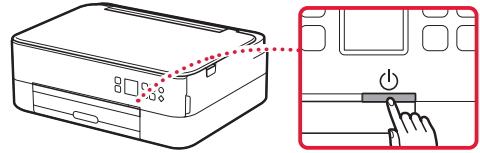
3. Encender la impresora



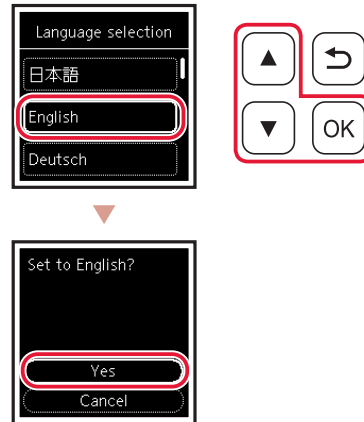
- 1 Conecte el cable de alimentación.



- 2 Pulse el botón **ACTIVADO (ON)**.



- 3 Utilice los botones ▲ y ▼ para seleccionar un idioma y, a continuación, pulse el botón **OK**.

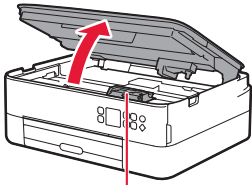


Instalación de la impresora

4. Instalar los cartuchos FINE



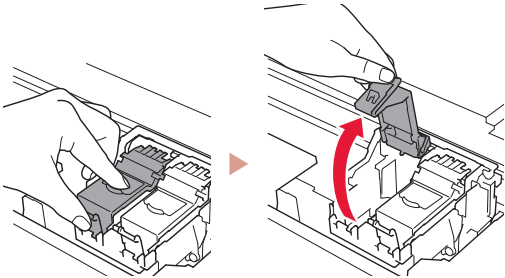
1 Abra la cubierta/unidad de escaneado.



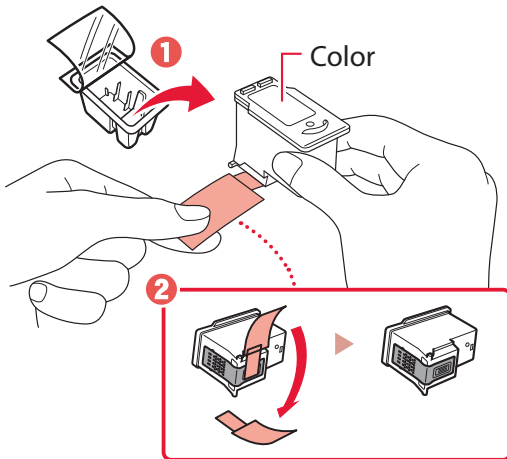
⚠ Precaución

No toque el soporte de cartucho FINE hasta que se detenga.

2 Pellizque y abra la tapa de bloqueo del cartucho de tinta del lado izquierdo.

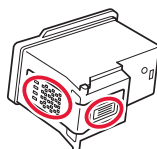


3 Retire el cartucho FINE de color del contenedor y retire la cinta protectora.

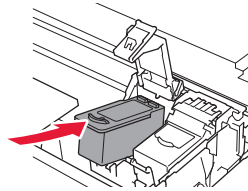


»»» Importante

- No toque la tinta de la cinta protectora. Podría manchar sus manos o los objetos que se encuentran a su alrededor.
- No toque las áreas que se muestran en la imagen. Si lo hace, puede que la impresora no imprima correctamente.

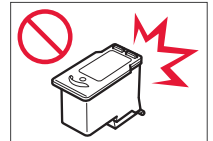


4 Coloque el cartucho FINE de color en el soporte de cartucho FINE.

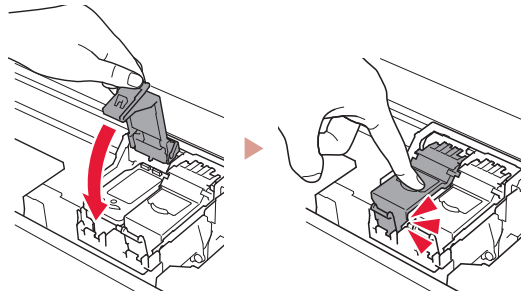


»»» Importante

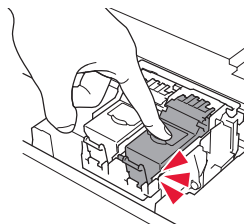
No golpee el cartucho FINE. Si se golpea, puede funcionar mal.



5 Empuje hacia abajo la tapa de bloqueo del cartucho de tinta firmemente hasta que encaje en su lugar para cerrarla por completo.

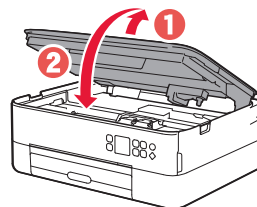


6 Repita los pasos del 2 al 5 e instale el cartucho FINE negro también en el lado derecho.



7 Cierre la cubierta/unidad de escaneado.

- La impresora comenzará a iniciarse.



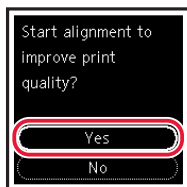
⚠ Precaución

Tenga cuidado con los dedos.

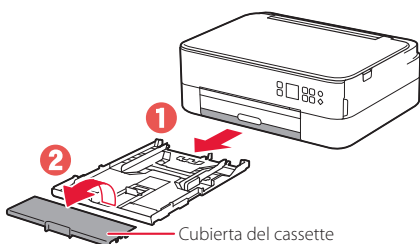
5. Carga del papel



1 Pulse el botón **OK**.

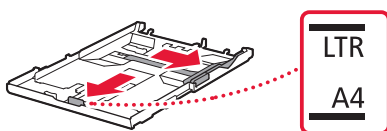


2 Retire el cassette de la impresora y retire la cubierta del cassette.



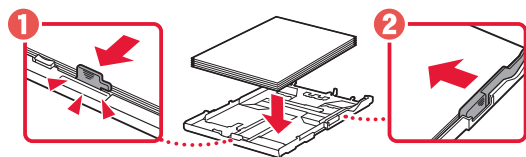
3 Separe las guías del papel deslizándolas.

- Deslice la guía del papel derecha hacia el borde derecho. Alinee la guía del papel frontal con la marca Carta o A4.

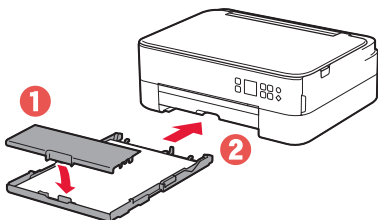


4 Cargue el papel.

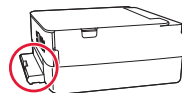
- Cargue 2 o más hojas de papel Carta o papel normal de tamaño A4.
- Coloque el papel delante de la guía del papel frontal y alinee la guía del papel derecha con el ancho del papel.



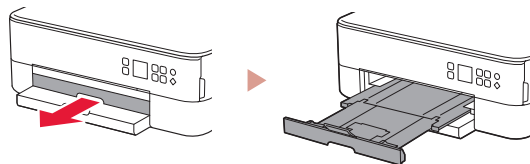
5 Coloque la cubierta del cassette e inserte el cassette.



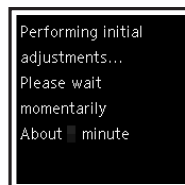
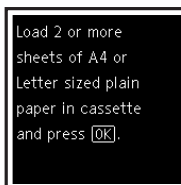
- Mírelo desde el lado para confirmar que está como en el diagrama.



6 Extraiga la bandeja de salida del papel.



7 Pulse el botón **OK**.



»»» Nota

El proceso de alineación imprime dos hojas de doble cara.

No extraiga el papel o use la impresora hasta que se haya completado la alineación.

8 Compruebe que aparezca la siguiente pantalla.



Si va a utilizar la impresora sin conectar con ningún otro dispositivo, la configuración ya se ha completado.

Seleccione el método de conexión que mejor se adapte al uso de la impresora.

- Para usar la impresora sin conectar con ningún otro dispositivo
 - ➔ Ha finalizado la configuración.
- Para usar la impresora conectándola a un ordenador o un teléfono inteligente
 - ➔ Continúe a la página siguiente.

¿Qué dispositivo va a conectar?



Ordenador



Ordenador y
teléfono inteligente





Teléfono inteligente

6-a

Conectar al ordenador

Si utiliza varios ordenadores, realice estos pasos en cada ordenador.



- 1 Acceda al sitio web de Canon desde el ordenador.
 <https://ij.start.canon>
- 2 Seleccione  **Configurar**.
- 3 Escriba el nombre del modelo de su impresora y haga clic en **Ir**.
- 4 Haga clic en **Iniciar**.
- 5 Haga clic en **(B) Conexión con un ordenador/teléfono inteligente**.
 - Los siguientes pasos son para usuarios de Windows.
- 6 Haga clic en **Descargar**.
- 7 Ejecute el archivo descargado.
- 8 Siga las instrucciones que aparezcan en pantalla.
 - Estas operaciones pueden llevar algún tiempo.
 - Para conectar con un teléfono inteligente también, consulte "6-b. Conexión con un teléfono inteligente" en la página 5.

6-b

Conexión con un teléfono inteligente

Si utiliza varios teléfonos inteligentes, realice estos pasos en cada teléfono inteligente.



- 1 Instale la aplicación "Canon PRINT Inkjet/SELPHY" en su teléfono inteligente.



- Busque "Canon PRINT" en App Store o Google Play.
- Acceda al sitio web Canon para descargar la aplicación.



- 2 Abra la aplicación instalada y luego siga las instrucciones en la aplicación para agregar su impresora.

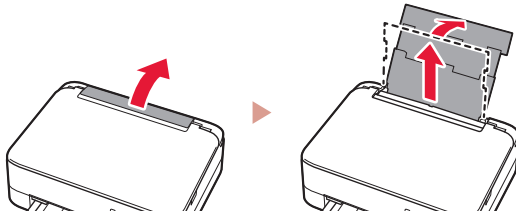


Cuando haya agregado la impresora, podrá imprimir desde su teléfono inteligente.
Para imprimir fotos, consulte "Carga de papel fotográfico" en la página 6.

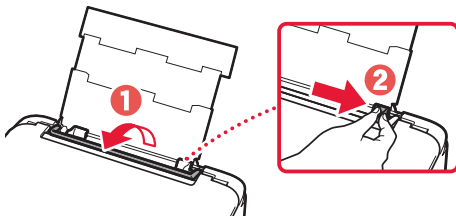
Carga de papel fotográfico

El papel fotográfico solo se puede cargar en la bandeja posterior.

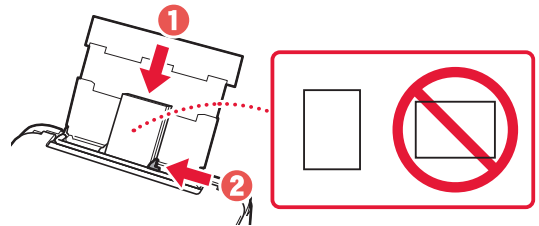
- 1 Abra la cubierta de la bandeja posterior y extienda el soporte del papel.



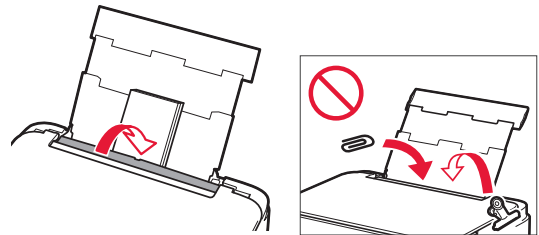
- 2 Abra la cubierta de la ranura de alimentación y deslice la guía del papel del lado derecho totalmente hacia la derecha.



- 3 Cargue varias hojas de papel fotográfico con la cara de impresión hacia arriba y deslice la guía del papel lateral contra el borde de la pila de papel.

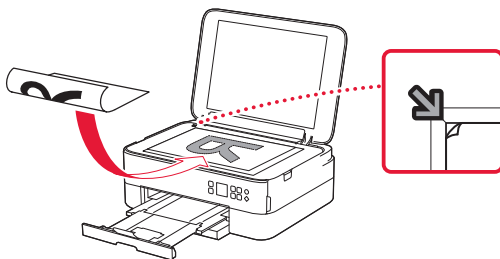


- 4 Cierre la cubierta de la ranura de alimentación.
 - Siga las instrucciones en pantalla para definir la información para el papel cargado.



Copia

- 1 Encienda la impresora.
- 2 Cargue papel Carta o papel normal de tamaño A4.
- 3 Abra la cubierta de documentos y coloque el documento cara abajo en la platina. Alinee el documento con la marca de alineación (↘).



- 4 Cierre la cubierta de documentos.
- 5 Pulse el botón **OK**.
- 6 Seleccione **Configuración de copias (Copy settings)** y, a continuación, pulse el botón **OK**.
- 7 Especifique la configuración de impresión utilizando los botones ▲, ▼ y **OK**.

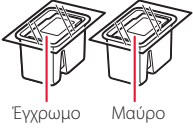


- 8 Pulse el botón **Iniciar (Start)**.

Ρύθμιση του εκτυπωτή

1. Περιεχόμενα συσκευασίας

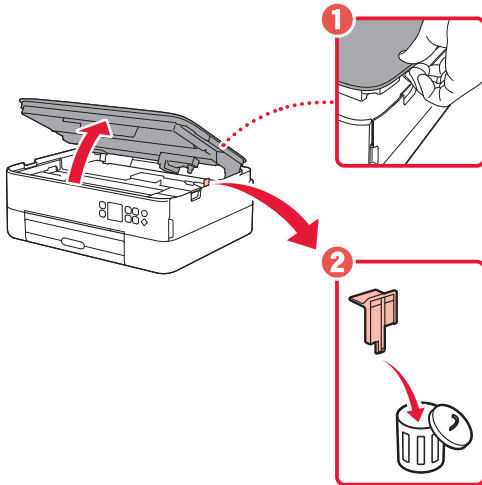
● Φυσίγγια FINE



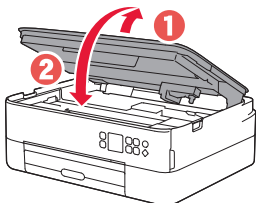
- Καλώδιο τροφοδοσίας
- Πληροφορίες για την ασφάλεια και σημαντικές πληροφορίες
- Ξεκινώντας (αυτό το εγχειρίδιο)

2. Αφαίρεση υλικών συσκευασίας

- 1 Αφαιρέστε και απορρίψτε τυχόν υλικά συσκευασίας και πορτοκαλί ταινία.
- 2 Ανοίξτε τη μονάδα σάρωσης / κάλυμμα, αφαιρέστε και απορρίψτε την πορτοκαλί ταινία και το προστατευτικό υλικό από το εσωτερικό.



- 3 Κλείστε τη μονάδα σάρωσης / κάλυμμα.
 - Ανοίξτε πλήρως τη μονάδα σάρωσης / κάλυμμα και, έπειτα, κλείστε τη.

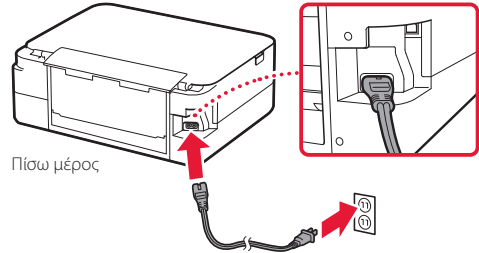


▲ Προσοχή
Προσέχετε τα δάχτυλά σας.

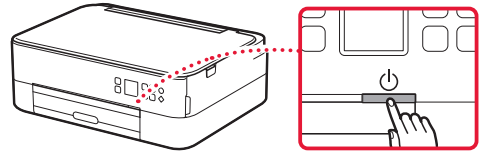
3. Ενεργοποίηση του εκτυπωτή



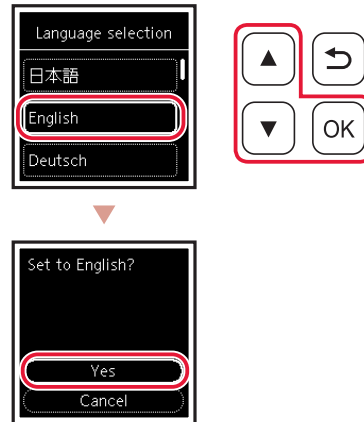
- 1 Συνδέστε το καλώδιο τροφοδοσίας.



- 2 Πατήστε το κουμπί **ON**.



- 3 Χρησιμοποιήστε τα κουμπιά ▲ και ▼ για να επιλέξετε γλώσσα και, στη συνέχεια, πατήστε το κουμπί **OK**.

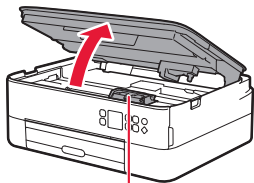


Ρύθμιση του εκτυπωτή

4. Τοποθέτηση των φυσιγγίων FINE



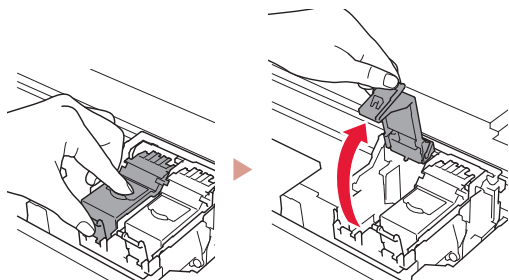
- 1 Ανοίξτε τη μονάδα σάρωσης / κάλυμμα.



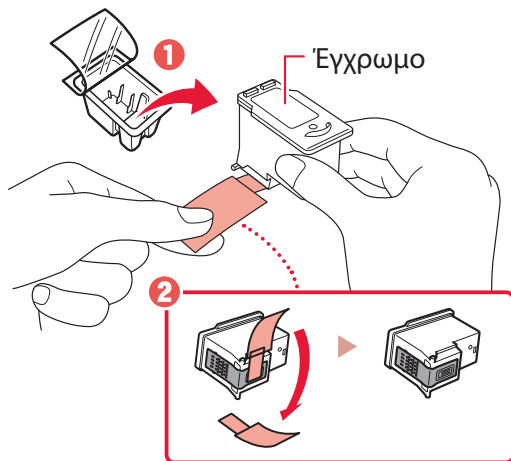
⚠ Προσοχή

Μην αγγίζετε τη θήκη φυσιγγίου FINE μέχρι να σταματήσει να κινείται.

- 2 Πιέστε και ανοίξτε το κάλυμμα ασφάλισης φυσιγγίου μελάνης στην αριστερή πλευρά.

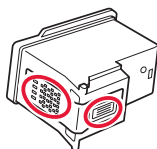


- 3 Αφαιρέστε το έγχρωμο φυσιγγίο FINE από τη συσκευασία και αφαιρέστε την προστατευτική ταινία.

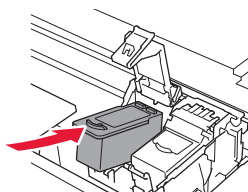


»»» Σημαντικό

- Μην αγγίζετε τη μελάνη που παραμένει στην προστατευτική ταινία. Μπορεί να λερώσετε τα χέρια σας ή τα γύρω αντικείμενα.
- Μην αγγίζετε τις περιοχές που υποδεικνύονται στην εικόνα. Διαφορετικά, ο εκτυπωτής ενδέχεται να μην εκτυπώνει σωστά.

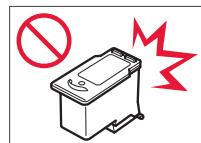


- 4 Τοποθετήστε το έγχρωμο φυσιγγίο FINE στη θήκη φυσιγγίου FINE.

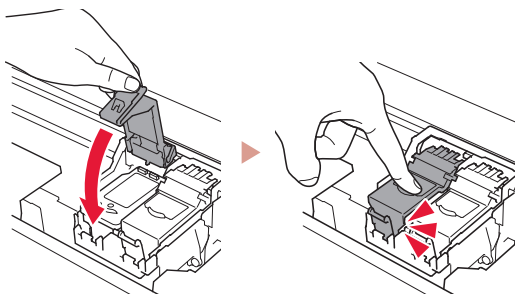


»»» Σημαντικό

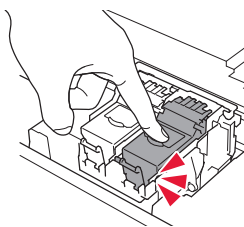
Μη χτυπάτε το φυσιγγίο FINE. Κάτι τέτοιο μπορεί να προκαλέσει δυσλειτουργία.



- 5 Πιέστε το κάλυμμα ασφάλισης φυσιγγίου μελάνης προς τα κάτω μέχρι να κουμπώσει στη θέση του.

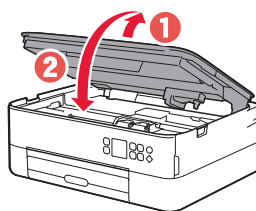


- 6 Επαναλάβετε τα βήματα 2 έως 5 και εγκαταστήστε και το μαύρο φυσιγγίο FINE στη δεξιά πλευρά.



- 7 Κλείστε τη μονάδα σάρωσης / κάλυμμα.

- Ο εκτυπωτής αρχίζει να προετοιμάζεται.



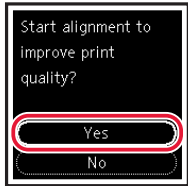
⚠ Προσοχή

Προσέχετε τα δάχτυλά σας.

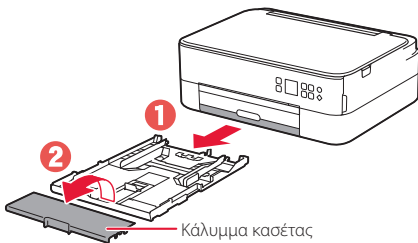
5. Τοποθέτηση χαρτιού



1 Πατήστε το κουμπί **OK**.

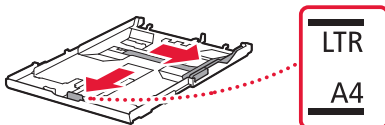


2 Αφαιρέστε την κασέτα από τον εκτυπωτή καθώς και το κάλυμμα της κασέτας.



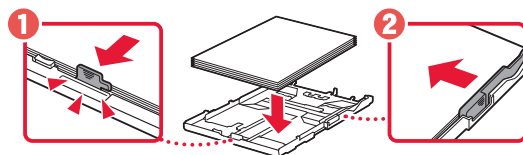
3 Σύρετε τους οδηγούς χαρτιού ώστε να τους διαχωρίσετε.

- Σύρετε το δεξιό οδηγό χαρτιού στο δεξιό άκρο. Ευθυγραμμίστε τον μπροστινό οδηγό χαρτιού με την ένδειξη Letter ή A4.

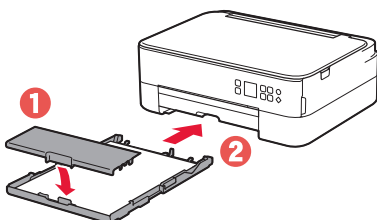


4 Τοποθετήστε χαρτί.

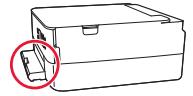
- Τοποθετήστε 2 ή περισσότερες σελίδες απλού χαρτιού μεγέθους Letter ή A4.
- Τοποθετήστε το χαρτί στον μπροστινό οδηγό χαρτιού και ευθυγραμμίστε τον δεξιό οδηγό χαρτιού με το πλάτος του χαρτιού.



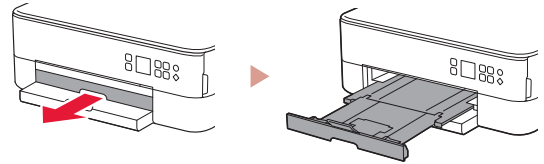
5 Τοποθετήστε ξανά το κάλυμμα της κασέτας καθώς και την κασέτα.



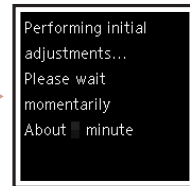
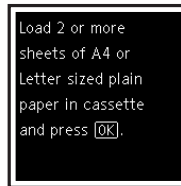
- Κοιτάξτε την από το πλάι για να επιβεβαιώσετε ότι είναι όπως στο διάγραμμα.



6 Τραβήξτε έξω τη θήκη εξόδου χαρτιού.



7 Πατήστε το κουμπί **OK**.



»»» Σημείωση

Η διαδικασία ευθυγράμμισης εκτυπώνει δύο σελίδες διπλής όψης.

Μην τραβάτε το χαρτί προς τα έξω και μην χρησιμοποιείτε τον εκτυπωτή μέχρι να ολοκληρωθεί η ευθυγράμμιση.

8 Βεβαιωθείτε ότι εμφανίζεται η ακόλουθη οθόνη.



Αν πρόκειται να χρησιμοποιήσετε τον εκτυπωτή χωρίς να συνδέσετε άλλες συσκευές, τότε η ρύθμιση έχει ολοκληρωθεί.

Επιλέξτε τη μέθοδο που ταιριάζει καλύτερα στον τρόπο που θα χρησιμοποιείτε τον εκτυπωτή.

- Για χρήση του εκτυπωτή χωρίς σύνδεση σε άλλες συσκευές
 - ➔ Η ρύθμιση έχει ολοκληρωθεί.
- Για χρήση του εκτυπωτή με σύνδεση σε υπολογιστή ή smartphone
 - ➔ Προχωρήστε στην επόμενη σελίδα.

Τι συσκευή σκοπεύετε να συνδέσετε;



Υπολογιστής



Υπολογιστής και
smartphone




Smartphone

6-a

Σύνδεση με υπολογιστή

Εάν χρησιμοποιείτε πολλούς υπολογιστές, εκτελέστε αυτά τα βήματα σε κάθε υπολογιστή.



- 1 Μεταβείτε στη διαδικτυακή τοποθεσία της Canon από τον υπολογιστή σας.
 <https://ij.start.canon>
- 2 Επιλέξτε  **Εγκατάσταση.**
- 3 Καταχωρίστε το όνομα μοντέλου του εκτυπωτή σας και κάντε κλικ στην επιλογή **Μετάβαση.**
- 4 Κάντε κλικ στο **Έναρξη.**
- 5 Κάντε κλικ στο **(B) Σύνδεση σε υπολογιστή/smartphone.**
 - Τα παρακάτω βήματα αφορούν τους χρήστες Windows.
- 6 Κάντε κλικ στο **Λήψη.**
- 7 Εκτελέστε το ληφθέν αρχείο.
- 8 Ακολουθήστε τις οδηγίες στην οθόνη.
 - Αυτές οι λειτουργίες ενδέχεται να χρειαστούν κάποιο χρόνο.
 - Για να συνδέσετε και σε smartphone, ανατρέξτε στην ενότητα «6-b. Σύνδεση με Smartphone» στη σελίδα 5.

6-b

Σύνδεση με Smartphone

Εάν χρησιμοποιείτε πολλά smartphone, εκτελέστε αυτά τα βήματα σε κάθε smartphone.

**1** Εγκαταστήστε την εφαρμογή «Canon PRINT Inkjet/SELPHY» στο smartphone σας.

- Κάντε αναζήτηση για το «Canon PRINT» στο App Store ή στο Google Play.
- Μεταβείτε στη διαδικτυακή τοποθεσία της Canon για λήψη της εφαρμογής.

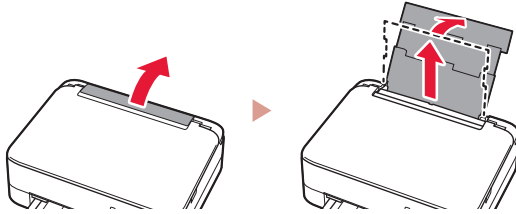
**2** Ανοίξτε την εγκατεστημένη εφαρμογή και ακολουθήστε τις οδηγίες που εμφανίζονται στην οθόνη στην εφαρμογή για να προσθέσετε τον εκτυπωτή σας.

Αφού προσθέσετε τον εκτυπωτή σας, θα μπορείτε να εκτυπώνετε από το smartphone σας. Για να εκτυπώσετε φωτογραφίες, ανατρέξτε στην ενότητα «Τοποθέτηση φωτογραφικού χαρτιού» στη σελίδα 6.

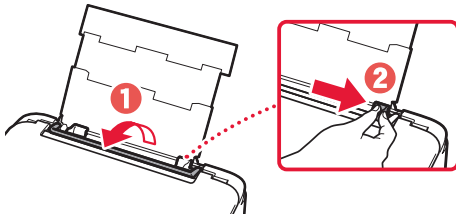
Τοποθέτηση φωτογραφικού χαρτιού

Το φωτογραφικό χαρτί μπορεί να τοποθετηθεί μόνο στην πίσω θήκη.

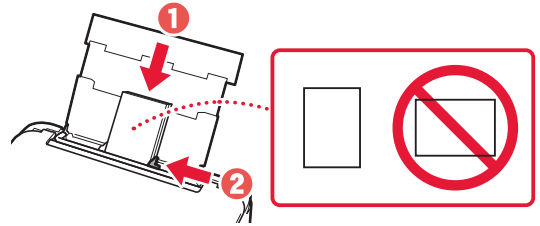
- 1 Ανοίξτε το κάλυμμα πίσω θήκης και εκτείnete την υποστήριξη χαρτιού.



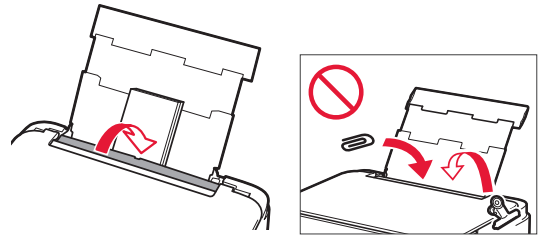
- 2 Ανοίξτε το κάλυμμα υποδοχής τροφοδοσίας και σύρετε το δεξιό οδηγό χαρτιού προς τα δεξιά έως το τέρμα.



- 3 Τοποθετήστε πολλά φύλλα φωτογραφικού χαρτιού με την πλευρά εκτύπωσης στραμμένη προς τα πάνω και σύρετε τον πλαϊνό οδηγό χαρτιού στην άκρη της στοιβας χαρτιών.

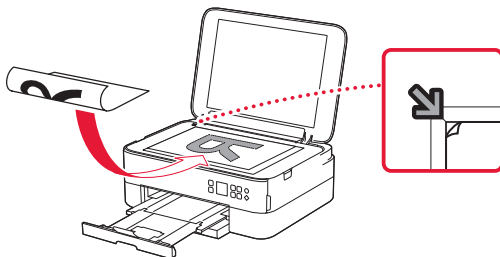


- 4 Κλείστε το κάλυμμα υποδοχής τροφοδοσίας.
 - Ακολουθήστε τις οδηγίες στην οθόνη για να ορίσετε πληροφορίες για το τοποθετημένο χαρτί.



Αντιγραφή

- 1 Ενεργοποιήστε τον εκτυπωτή.
- 2 Τοποθετήστε απλό χαρτί μεγέθους Letter ή A4.
- 3 Ανοίξτε το κάλυμμα εγγράφων και τοποθετήστε το έγγραφο με την τυπωμένη πλευρά στραμμένη προς τα κάτω πάνω στην επιφάνεια σάρωσης. Ευθυγραμμίστε το έγγραφο με το σημάδι ευθυγράμμισης (↘).



- 4 Κλείστε το κάλυμμα εγγράφων.
- 5 Πατήστε το κουμπί **OK**.
- 6 Επιλέξτε **Ρυθμίσεις αντιγραφής (Copy settings)** και, στη συνέχεια, πατήστε το κουμπί **OK**.
- 7 Ορίστε τις ρυθμίσεις εκτύπωσης, χρησιμοποιώντας τα κουμπιά ▲, ▼ και **OK**.

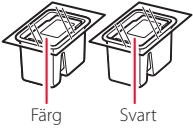


- 8 Πατήστε το κουμπί **Έναρξη (Start)**.

Ställa in skrivaren

1. Boxens innehåll

- FINE-kassetter

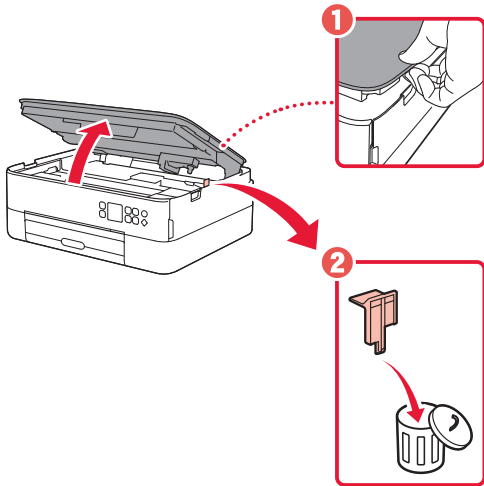


- Strömkabel
- Information om säkerhet och annan viktig information
- Uppstartsguide (denna handbok)

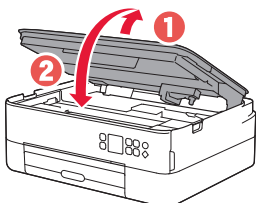
2. Ta bort förpackningsmaterial



- 1 Ta bort och kassera eventuellt förpackningsmaterial och orange tejp.
- 2 Öppna skannerenheten/luckan, ta bort och kassera den orange tejp och skyddsmaterialet inuti.



- 3 Stäng skannerenheten/luckan.
 - Öppna skannerenheten/luckan helt och stäng den sedan.

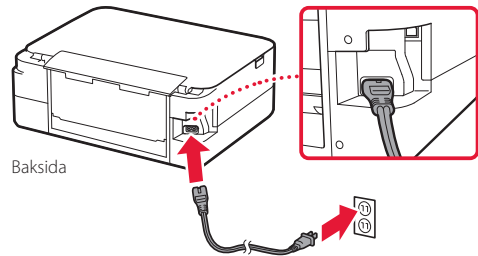


⚠ Försiktighet
Akta fingrarna.

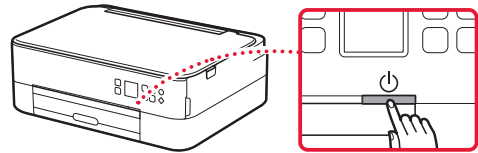
3. Slå på skrivaren



- 1 Anslut strömkabeln.



- 2 Tryck på **PÅ (ON)**.



- 3 Använd knappen **▲** eller knappen **▼** för att välja ett språk och tryck sedan på knappen **OK**.

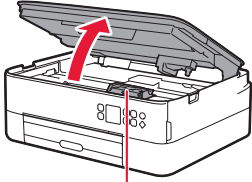


Ställa in skrivaren

4. Installera FINE-kassetterna



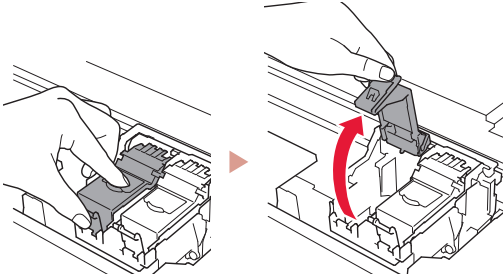
1 Öppna skannerenheten/luckan.



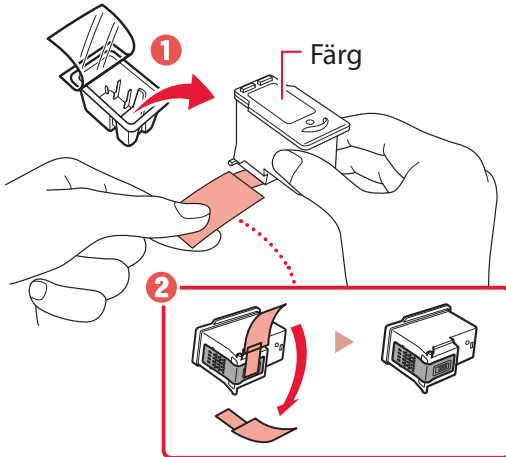
⚠ Försiktighet

Rör inte hållaren för FINE-kassetten förrän den har stannat.

2 Nyp tag i och öppna låsluckan på bläckkassetten på vänster sida.

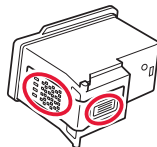


3 Ta bort färg-FINE-kassetten från behållaren och ta bort skyddstejpen.

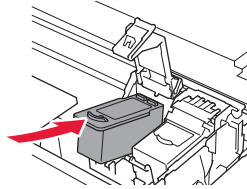


»» Viktigt!

- Rör inte bläcket på skyddstejpen. Det kan ge fläckar på dina händer eller omgivande objekt.
- Rör inte områdena som visas på bilden. Annars kanske inte skrivaren fungerar korrekt.

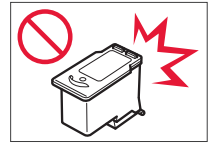


4 Sätt färg-FINE-kassetten i hållaren för FINE-kassetter.

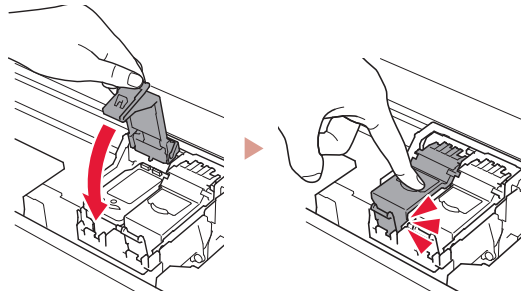


»» Viktigt!

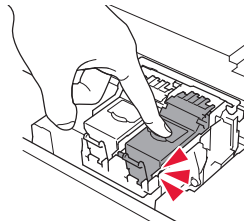
Låt inte FINE-kassetterna stöta i något. Det kan göra att den slutar fungera.



5 Tryck ned låsluckan på bläckkassetten ordentligt tills den klickar på plats så att den stängs helt och hållet.

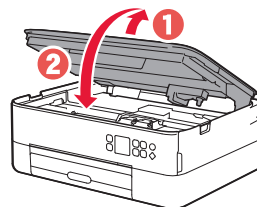


6 Upprepa steg 2 till 5 och installera den svarta FINE-kassetten också, på höger sida.



7 Stäng skannerenheten/luckan.

- Skrivaren börjar initialiseras.



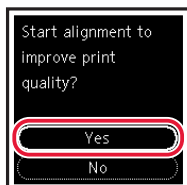
⚠ Försiktighet

Akta fingrarna.

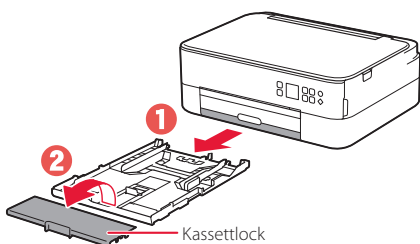
5. Fylla på papper



1 Tryck på **OK**.

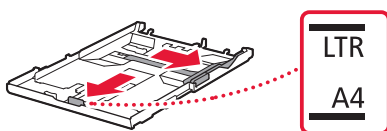


2 Dra ut kassetten ur skrivaren och ta bort kassetlocket.



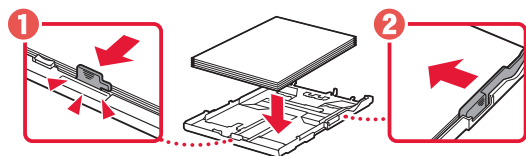
3 Skjut isär pappersledarna.

- Skjut den högra pappersledaren ut mot högerkanten. Justera den främre pappersledaren mot Letter- eller A4-märket.

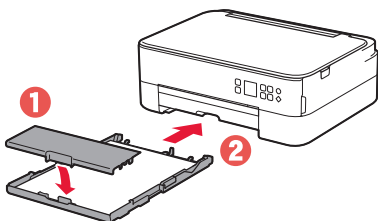


4 Fyll på papper.

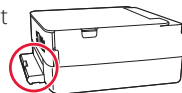
- Lägg i 2 eller fler ark vanligt Letter- eller A4-papper.
- Lägg papperet mot den främre pappersledaren och justera den högra pappersledaren efter papperets bredd.



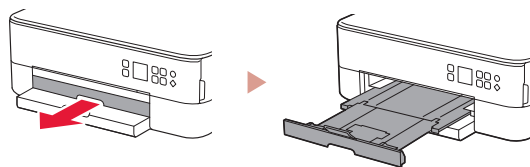
5 Sätt dit kassetlocket och sätt tillbaka kassetten.



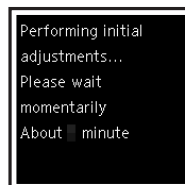
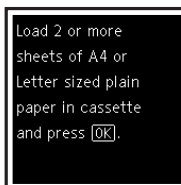
- Kontrollera från sidan att det ser ut som diagrammet.



6 Dra ut utmatningsfacket.



7 Tryck på **OK**.



»»» Obs!

Justeringsprocessen skriver ut två dubbelsidiga ark. Dra inte ut papperet och använd inte skrivaren förrän justeringen är klar.

8 Kontrollera att följande skärm visas.



Inställningen är nu klar om du ska använda skrivaren utan att ansluta några andra enheter.

Välj anslutningsmetoden som bäst passar hur du ska använda skrivaren.

- Om du vill använda skrivaren utan att ansluta några andra enheter
 - ➔ Konfigurationen är nu klar.
- För att använda skrivaren genom att ansluta till en dator eller smarttelefon
 - ➔ Fortsätt till nästa sida.

Vilken enhet ansluter du?



Dator



Dator och
smarttelefon





Smarttelefon

6-a

Ansluta till dator

Om du använder flera datorer utför du dessa steg på varje dator.



- 1 Gå till Canons webbplats på datorn.
 <https://ij.start.canon>
- 2 Välj  **Konfigurera**.
- 3 Mata in skrivarens modellnamn och klicka på **Kör**.
- 4 Klicka på **Starta**.
- 5 Klicka på **(B) Ansluta till en dator/smarttelefon**.
 - Följande steg gäller för Windows-användare.
- 6 Klicka på **Hämta**.
- 7 Starta den hämtade filen.
- 8 Följ instruktionerna på skärmen.
 - Dessa åtgärder kan ta en stund.
 - Om du vill ansluta till en smarttelefon också, läs "6-b. Ansluta till en smarttelefon" på sida 5.

6-b

Ansluta till en smarttelefon

Om du använder flera smarttelefoner utför du dessa steg på varje smarttelefon.



1 Installera appen "Canon PRINT Inkjet/SELPHY" på smarttelefonen.



- Sök efter "Canon PRINT" i App Store eller Google Play.
- Öppna Canons webbplats för att hämta appen.



2 Öppna den installerade appen och följ anvisningarna i appen för att lägga till skrivaren.



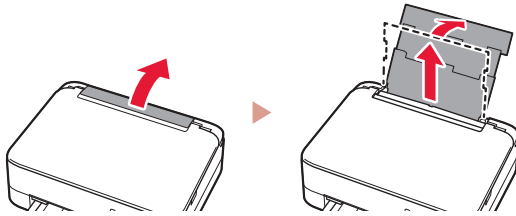
När du har lagt till skrivaren kan du skriva ut från din smarttelefon.

Om du vill skriva ut foton, läs "Fylla på fotopapper" på sida 6.

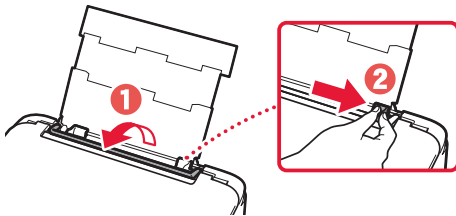
Fylla på fotopapper

Fotopapper kan endast fyllas på i det bakre facket.

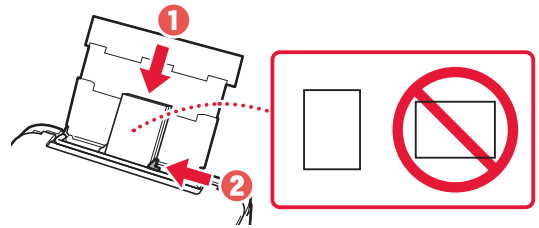
- 1 Öppna det bakre fackets lock och dra ut pappersstödet.



- 2 Öppna luckan för matningsfacket och skjut höger pappersledare längst ut till höger.

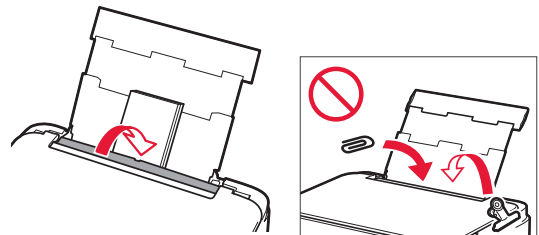


- 3 Lägg i flera ark fotopapper med utskriftssidan vänd uppåt och skjut pappersledaren på sidan mot kanten av pappersbunten.



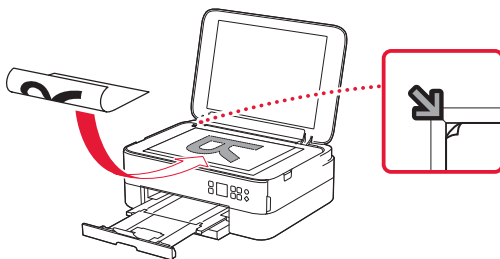
- 4 Stäng luckan för matningsfacket.

- Följ instruktionerna på skärmen för att ange information om det påfyllda papperet.



Kopiera

- 1 Slå på skrivaren.
- 2 Lägg i vanligt Letter- eller A4-papper.
- 3 Öppna dokumentluckan och placera dokumentet med framsidan nedåt på glaset. Passa in dokumentet efter justeringsmärket (↘).



- 4 Stäng dokumentluckan.
- 5 Tryck på **OK**.
- 6 Välj **Kopieringsinställningar (Copy settings)** och tryck sedan på **OK**.
- 7 Ange utskriftsinställningar med knapparna ▲, ▼ och **OK**.

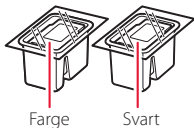


- 8 Tryck på **Start**.

Konfigurere skriveren

1. Innhold i esken

- FINE-kassetter

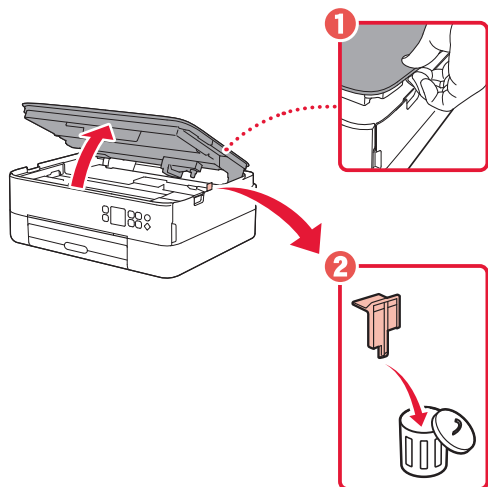


- Strømledning
- Sikkerhetsinformasjon og viktig informasjon
- Komme i gang (denne manualen)

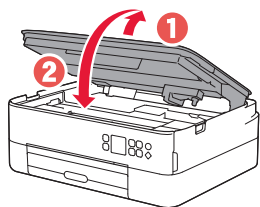
2. Fjerne beskyttelsesmateriale



- 1 Fjern og kast eventuelt beskyttelsesmateriale og oransje tape.
- 2 Åpne skanneenheten/dekselet, fjern og kast den oransje tapen og beskyttelsesmateriale inni.



- 3 Lukk skanneenheten/dekselet.
 - Åpne skanneenheten/dekselet helt, og lukk den/det igjen.

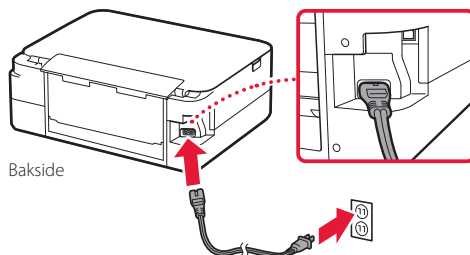


▲ Forsiktig!
Pass på fingrene.

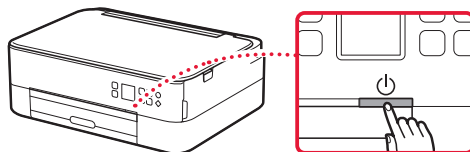
3. Slå på skriveren



- 1 Koble til strømledningen.



- 2 Trykk på **PÅ (ON)**-knappen.



- 3 Bruk ▲ og ▼-knappene for å velge et språk, og trykk deretter på **OK**-knappen.

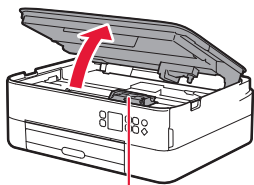


Konfigurere skriveren

4. Installere FINE-kassetten



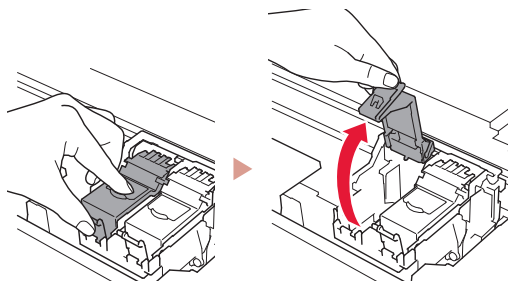
1 Åpne skanneenheten/dekselet.



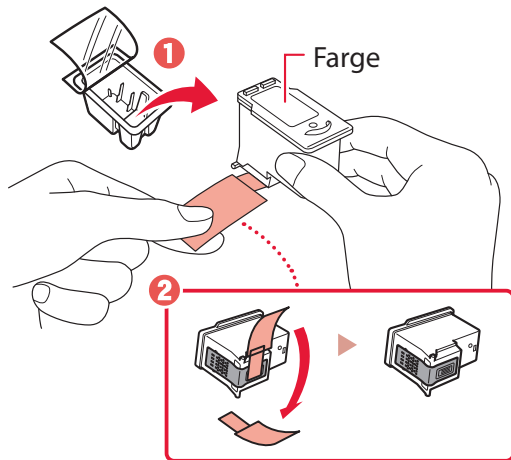
⚠ Forsiktig!

Ikke berør FINE-kassettholderen før den slutter å bevege seg.

2 Ta tak i og åpne låsedekselet for blekkassetter på venstre side.

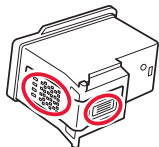


3 Ta FINE-kassetten for farge ut av beholderen og fjern beskyttelsestapen.

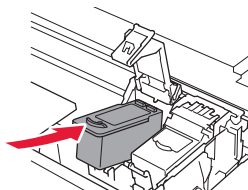


»»» Viktig!

- Ikke berør blekket på den beskyttende tapen. Det kan sette flekker på hendene dine eller andre gjenstander.
- Ikke berør områdene som er vist på figuren. Skriveren vil ellers ikke kunne skrive ut riktig.

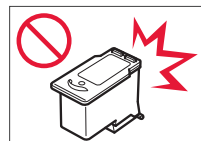


4 Sett FINE-kassetten med farger i FINE-kassettholderen.

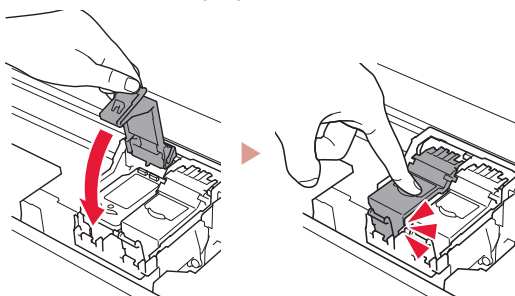


»»» Viktig!

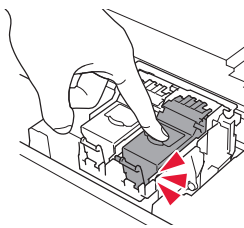
Ikke dunk på FINE-kassetten. Dette kan føre til at det oppstår en feil.



5 Skyv låsedekselet for blekkassetter godt ned helt til det klikker på plass, slik at det lukkes helt.

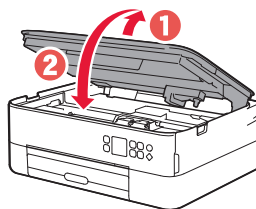


6 Gjenta trinn 2 til 5 og installer den svarte FINE-kassetten også, på høyre side.



7 Lukk skanneenheten/dekselet.

- Skriveren starter initialisering.



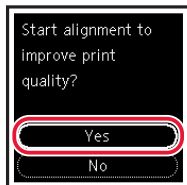
⚠ Forsiktig!

Pass på fingrene.

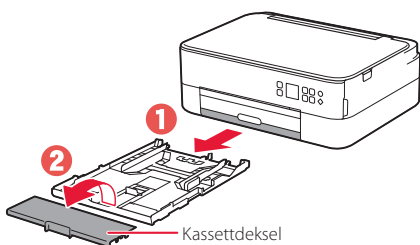
5. Legge i papir



1 Trykk på **OK**-knappen.

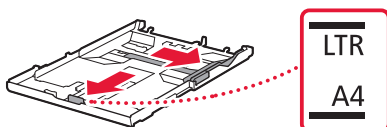


2 Fjern kassetten fra skriveren og fjern kassettdekselet.



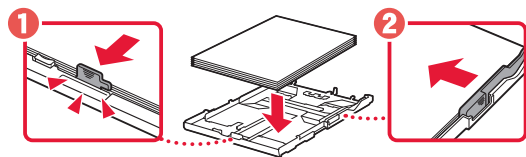
3 Dra fra hverandre papirførerne.

- Skyv høyre papirfører mot høyre kant. Juster fremre papirfører med Letter- eller A4-merket.

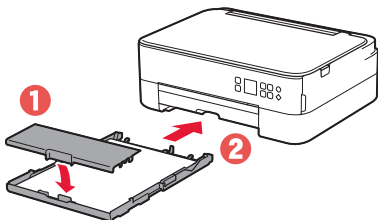


4 Legg i papir.

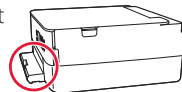
- Legg i 2 eller flere ark med vanlig papir i Letter- eller A4-størrelse.
- Plasser papiret mot fremre papirfører, og juster høyre papirfører ut fra bredden på papiret.



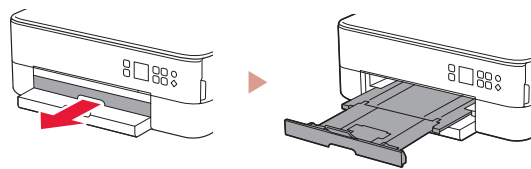
5 Fest kassettdekselet og skift ut kassetten.



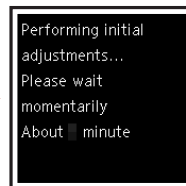
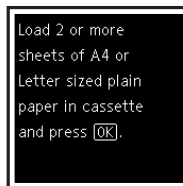
- Sjekk at alt ser ut som på skjemaet sett fra siden.



6 Trekk ut papirutmatingsbrettet.



7 Trykk på **OK**-knappen.



Merke

Justeringsprosessen skriver ut to-sidige ark.

Ikke trekk ut papiret, eller bruk skriveren, før justeringen er ferdig.

8 Sjekk at følgende skjermbilde vises.



Oppsettet er nå ferdig hvis du ønsker å bruke skriveren uten å koble til andre enheter.

Velg tilkoblingsmetoden som passer best til hvordan du skal bruke skriveren.

- For å bruke skriveren uten å koble den til andre enheter
 - ➔ Oppsettet er nå ferdig.
- Bruke skriveren ved å koble til en datamaskin eller smarttelefon
 - ➔ Gå videre til neste side.

Hvilken enhet kobler du til?



Datamaskin



Datamaskin og
smarttelefon





Smarttelefon

6-a

Koble til en datamaskin

Hvis du bruker flere datamaskiner, utfører du disse trinnene på hver datamaskin.



- 1 Åpne Canon-nettstedet fra datamaskinen.
 <https://ij.start.canon>
- 2 Velg  **Oppsett**.
- 3 Angi skriverens modellnavn og klikk på **Gå**.
- 4 Klikk på **Start**.
- 5 Klikk på **(B) Koble til en datamaskin/smarttelefon**.
 - Følgende trinn gjelder Windows-brukere.
- 6 Klikk på **Last ned**.
- 7 Kjør den nedlastede filen.
- 8 Følg instruksjonene på skjermen.
 - Disse operasjonene kan ta litt tid.
 - Se "6-b. Koble til en smarttelefon" på side 5 hvis du i tillegg vil koble til en smarttelefon.

6-b

Koble til en smarttelefon

Hvis du bruker flere smarttelefoner, utfører du disse trinnene på hver smarttelefon.



1 Installer "Canon PRINT Inkjet/SELPHY"-appen på smarttelefonen.



- Søk etter "Canon PRINT" i App Store eller Google Play.
- Åpne Canon-nettsiden for å laste ned appen.



2 Åpne den installerte appen og følg deretter instruksjonene i appen for å legge til skriveren.



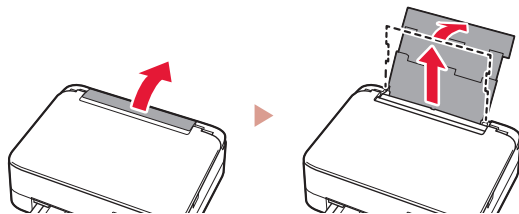
Når du har lagt til skriveren din, kan du skrive ut fra smarttelefon.

Se "Legge i fotopapir" på side 6 for mer informasjon om hvordan du skriver ut bilder.

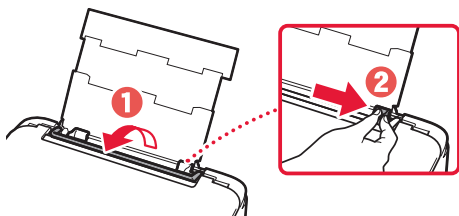
Legge i fotonpapir

Fotopapir kan kun legges i bakskuffen.

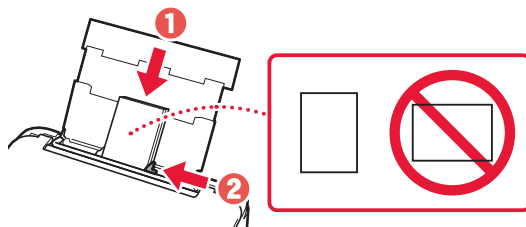
- 1 Åpne bakskuffdekelet, og forleng papirstøtten.



- 2 Åpne spordekelet for mating og skyv høyre papirfører helt mot høyre.

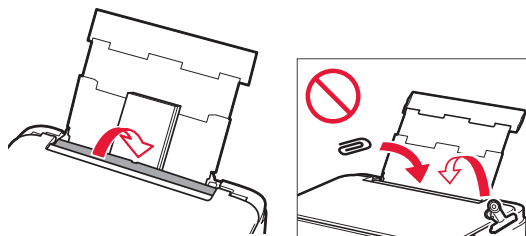


- 3 Legg inn flere ark med fotonpapir med utskriftssiden opp, og skyv papirføreren fra siden mot kanten på papirstabelen.



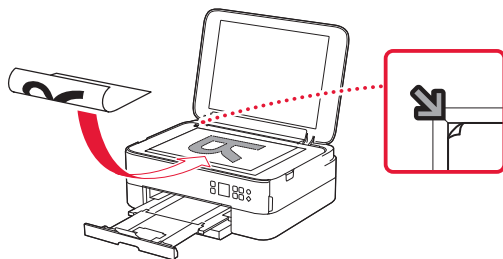
- 4 Lukk spordekelet for mating.

- Følg instruksjonene på skjermen for å angi informasjon for papiret som er lagt i.

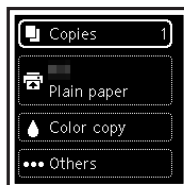


Kopiere

- 1 Slå på skriveren.
- 2 Legg inn vanlig papir i Letter- eller A4-størrelse.
- 3 Åpne dokumentdekelet og plasser dokumentet med utskriftssiden ned på platen. Juster dokumentet etter justeringsmerket (↘).



- 4 Lukk dokumentdekelet.
- 5 Trykk på **OK**-knappen.
- 6 Velg **Kopiinnstillinger (Copy settings)**, og trykk deretter på **OK**-knappen.
- 7 Angi utskriftsinnstillinger med knappene ▲, ▼ og **OK**.

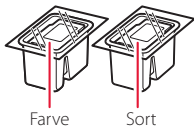


- 8 Trykk på **Start**-knappen.

Konfigurere printeren

1. Æskens indhold

• FINE-patroner



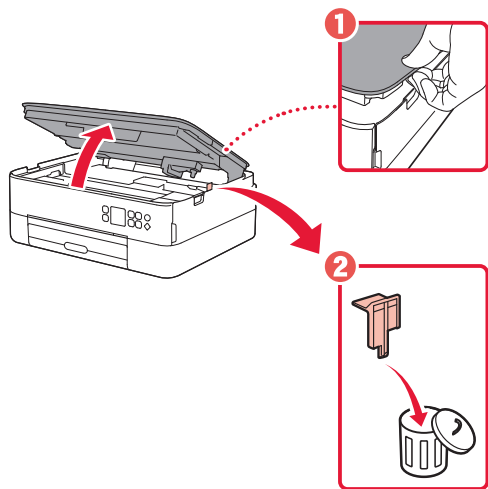
• Netledning

- Sikkerhedsoplysninger og vigtige oplysninger
- Før du begynder (denne vejledning)

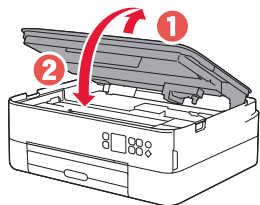
2. Fjern emballage



- 1 Fjern og bortskaf al emballage og orange tape.
- 2 Åbn scanningsenheden/dækslet, fjern den orange tape og det beskyttende materiale inde i printeren, og smid det væk.



- 3 Luk scanningsenheden/dækslet.
 - Åbn scanningsenheden/dækslet helt, og luk det derefter.

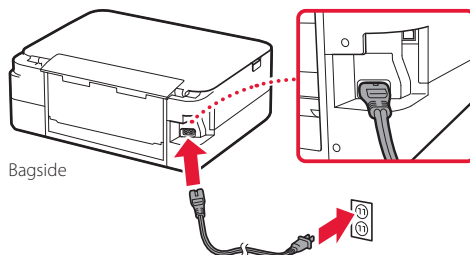


⚠ Forsigtig
Pas på dine fingre.

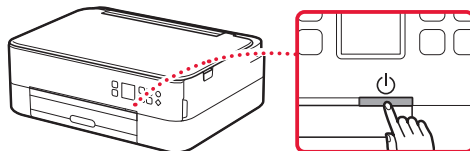
3. Tænd printeren



- 1 Tilslut netledningen.



- 2 Tryk på knappen **TIL (ON)**.



- 3 Brug knapperne ▲ og ▼ til at vælge et sprog, og tryk derefter på knappen **OK**.

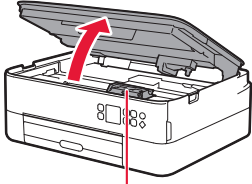


Konfigurere printeren

4. Installation af FINE-patroner



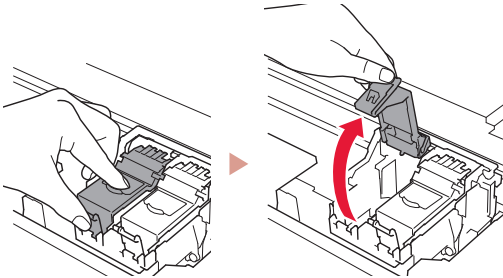
1 Åbn scanningsenheden/dækslet.



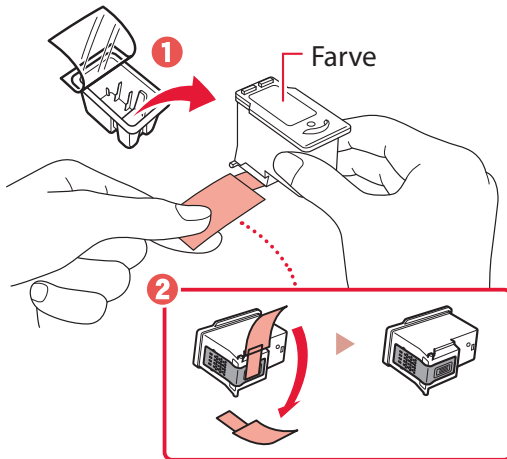
⚠ Forsigtig

Undgå at røre ved FINE-patronholderen, før den stopper.

2 Knib sammen, og åbn låsedækslet til blækpatronen på venstre side.

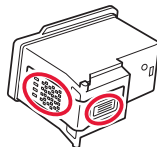


3 Tag farve-FINE-patronen ud af holderen, og fjern beskyttelsestapen.

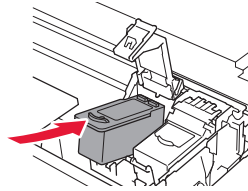


»»» Vigtigt

- Rør ikke ved blækket på den beskyttende tape. Det kan give pletter på dine hænder og genstande i nærheden.
- Rør ikke de områder, der vises på figuren. Hvis du gør det, kan printeren muligvis ikke udskrive korrekt.

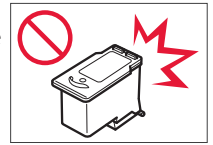


4 Sæt farve-FINE-patronen i FINE-patronholderen.

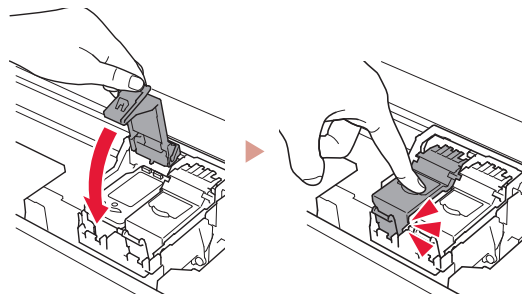


»»» Vigtigt

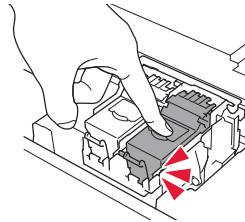
Pas på, at du ikke kommer til at støde FINE-patronen mod noget. Det kan medføre funktionsfejl.



5 Skub låsedækslet til blækpatronen ned, indtil det klikker på plads og låses fast.

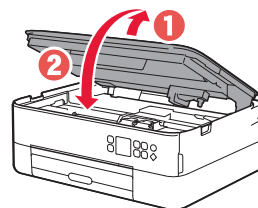


6 Gentag trin 2 til 5, og indsæt den sorte FINE-patron til højre.



7 Luk scanningsenheden/dækslet.

- Printeren initialiseres.



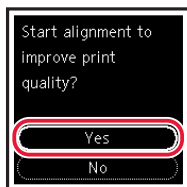
⚠ Forsigtig

Pas på dine fingre.

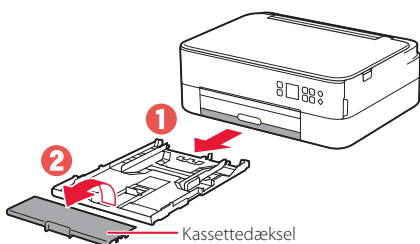
5. Ilægning af papir



1 Tryk på knappen **OK**.

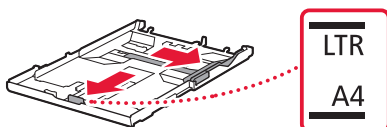


2 Fjern kassetten fra printeren, og fjern kassettedækslet.



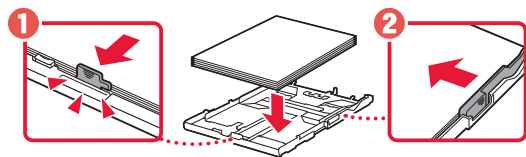
3 Skub papirstyrene fra hinanden.

- Skub højre papirstyr til den højre kant. Juster det forreste papirstyr med Letter- eller A4-mærket.

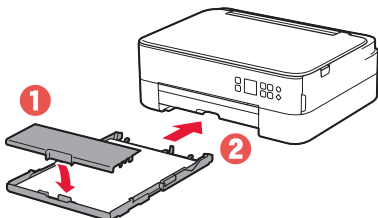


4 Ilæg papir.

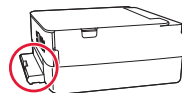
- Ilæg 2 eller flere ark almindeligt papir i Letter- eller A4-størrelse.
- Placer papiret mod det forreste papirstyr, og juster derefter det højre papirstyr med bredden af papiret.



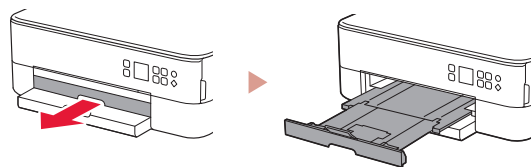
5 Sæt kassettedækslet på, og udskift kassetten.



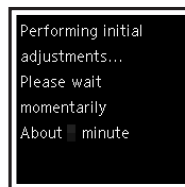
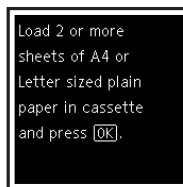
- Kig på printeren fra siden, og bekræft, at det ser ud som på tegningen.



6 Træk udbakken til papir ud.



7 Tryk på knappen **OK**.



»»» Bemærk

Under justeringsprocessen udskrives der to dobbeltsidede ark. Træk ikke papiret ud, og brug ikke printeren, før justeringen er fuldført.

8 Tjek, at følgende skærbillede vises.



Hvis du vil bruge printeren uden at tilslutte andre enheder, er opsætningen færdig nu.

Vælg den forbindelsesmetode, der passer bedst til den måde, du vil bruge printeren på.

- For at bruge printeren uden tilslutning af andre enheder
 - ➔ Opsætningen er nu fuldført.
- For at bruge printeren ved at tilslutte til en computer eller smartphone
 - ➔ Fortsæt på næste side.

Hvilken enhed tilslutter du?



Computer



Computer og
smartphone





Smartphone

6-a

Tilslutning til en computer

Hvis du bruger flere computere, skal du udføre disse trin på hver computer.



- 1 Gå til Canon-webstedet fra din computer.
 <https://ij.start.canon>
- 2 Vælg  **Konfiguration**.
- 3 Skriv printerens modelnavn, og klik på **Ok**.
- 4 Klik på **Start**.
- 5 Klik på **(B) Tilslutning til en computer/smartphone**.
 - Følgende trin gælder for Windows-brugere.
- 6 Klik på **Hent**.
- 7 Kør den downloadede fil.
- 8 Følg instruktionerne på skærmen.
 - Disse handlinger kan tage lidt tid.
 - Hvis du også vil tilslutte en smartphone, skal du se "6-b. Tilslutning til en smartphone" på side 5.

6-b

Tilslutning til en smartphone

Hvis du bruger flere smartphones, skal du udføre disse trin på hver smartphone.



1 Installer appen "Canon PRINT Inkjet/SELPHY" på din smartphone.



- Søg efter "Canon PRINT" i App Store eller Google Play.
- Gå til Canon-webstedet for at downloade appen.



2 Åbn den installerede app, og følg instruktionerne på skærmen i appen for at tilføje din printer.

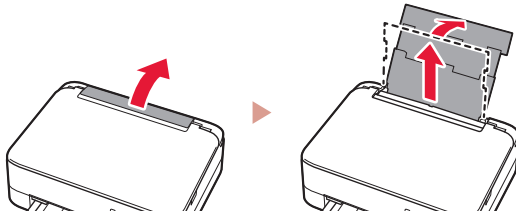


Når du har tilføjet din printer, kan du udskrive fra din smartphone.
Hvis du vil udskrive fotos, skal du se "Ilægning af fotopapir" på side 6.

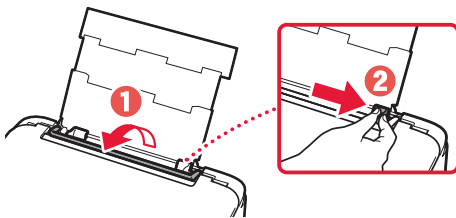
Ilægning af fotopapir

Der kan kun lægges fotopapir i den bagerste bakke.

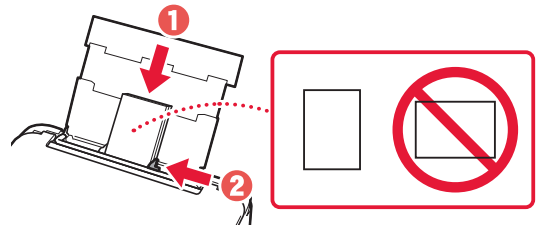
- 1 Åbn dækslet til bagerste bakke, og træk papirstøtten ud.



- 2 Åbn arkføderdækslet, og skub det højre papirstyr helt ud til højre.

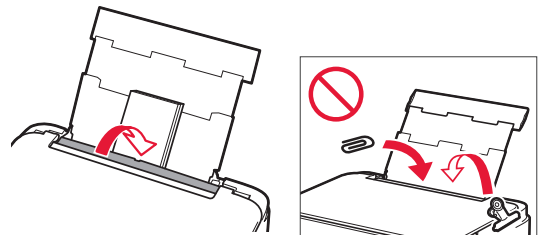


- 3 Ilæg flere ark fotopapir med udskriftssiden opad, og skub papirstyret på siden mod kanten af papirstakken.



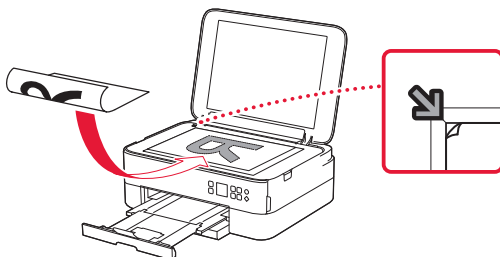
- 4 Luk arkføderdækslet.

- Følg instruktionerne på skærmen for at angive oplysninger for det ilagte papir.



Kopiering

- 1 Tænd printeren.
- 2 Ilæg almindeligt papir i Letter- eller A4-størrelse.
- 3 Åbn dokumentdækslet, og placer dokumentet med forsiden nedad på pladen. Juster dokumentet med justeringsmærket (↘).



- 4 Luk dokumentdækslet.
- 5 Tryk på knappen **OK**.
- 6 Vælg **Kopieringsindstillinger (Copy settings)**, og tryk derefter på knappen **OK**.
- 7 Angiv udskrivningsindstillinger ved hjælp af knapperne ▲, ▼ og **OK**.

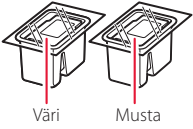


- 8 Tryk på knappen **Start**.

Tulostimen asennus

1. Paketin sisällys

• FINE-kasetit



Väri

Musta

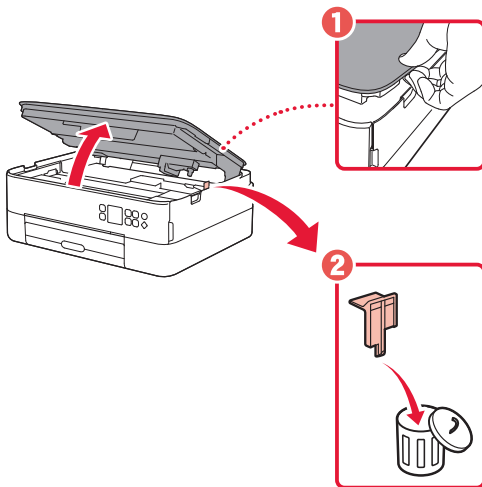
• Virtajohto

• Turvallisuus ja tärkeitä tietoja

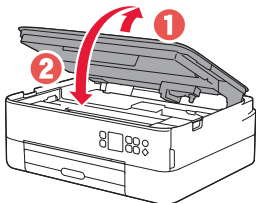
• Aloitusopas (tämä käyttöopas)

2. Pakkausmateriaalien poistaminen

- 1 Poista kaikki pakkausmateriaalit ja oranssi teippi.
- 2 Avaa skannausyksikkö/kansi, poista oranssi teippi ja suojamateriaali sisäpuolelta.



- 3 Sulje skannausyksikkö/kansi.
 - Avaa skannausyksikkö/kansi täysin ja sitten sulje se.

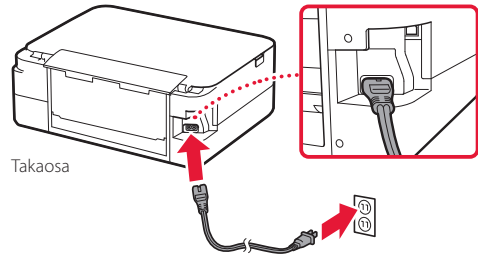


▲ Huomio
Varo sormiasi.

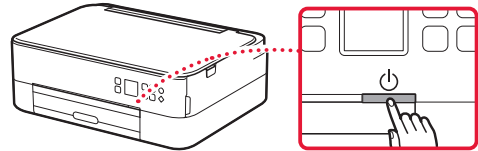
3. Virran kytkeminen tulostimeen



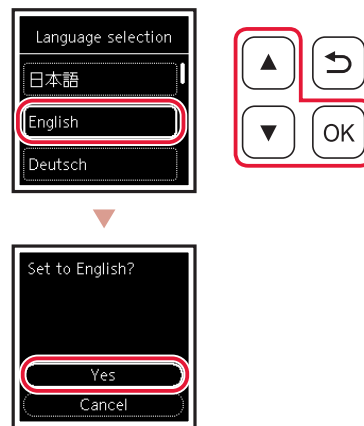
- 1 Kytke virtajohto.



- 2 Paina **KÄYTTÖSSÄ (ON)** -painiketta.



- 3 Valitse ▲- ja ▼-painikkeilla kieli ja paina sitten **OK**-painiketta.

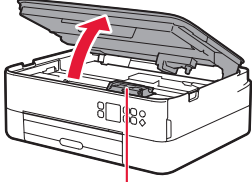


Tulostimen asennus

4. FINE-kasettien asentaminen



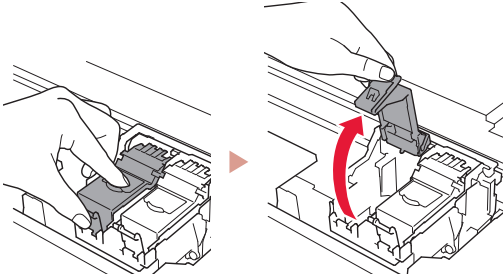
1 Avaa skannausyksikkö/kansi.



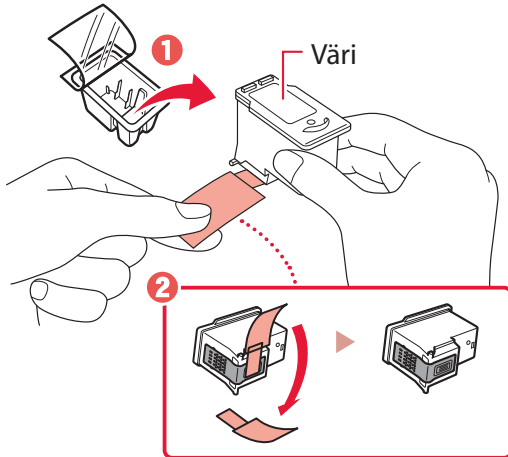
⚠ Huomio

Älä koske FINE-kasetin pidikkeeseen, ennen kuin se pysähtyy.

2 Avaa mustekasetin lukituskansi vasemmalla puolella.

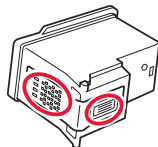


3 Poista värillinen FINE-kasetti pakkauksesta ja irrota suojateippi.

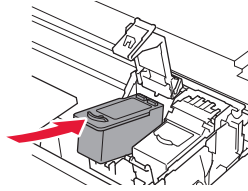


»»» Tärkeää

- Älä koske suojateipissä olevaan musteeseen. Se saattaa liata kätesi tai ympärillä olevia esineitä.
- Älä koske kuvassa merkittyihin alueisiin. Tulostin välttämättä tulosta muussa tapauksessa oikein.

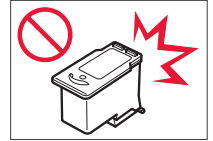


4 Aseta värillinen FINE-kasetti FINE-kasetin pidikkeeseen.

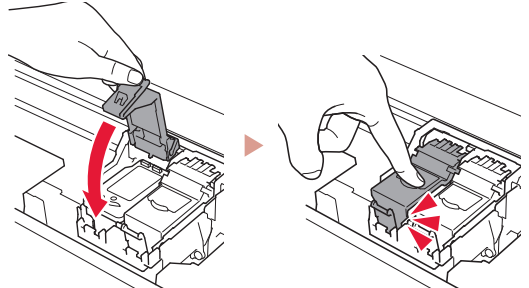


»»» Tärkeää

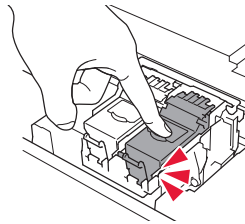
Älä pumpkaa FINE-kasettia. Se voi aiheuttaa toimintahäiriön.



5 Sulje mustekasetin lukituskansi painamalla sitä kevyesti, kunnes se napsahtaa paikalleen.

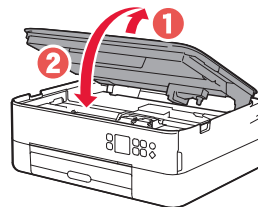


6 Toista vaiheet 2–5 ja asenna myös musta FINE-kasetti oikealle.



7 Sulje skannausyksikkö/kansi.

- Tulostin aloittaa alustamisen.



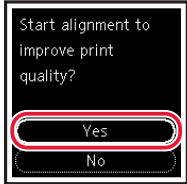
⚠ Huomio

Varo sormiasi.

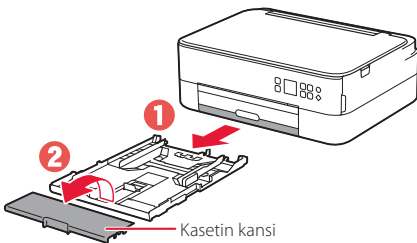
5. Paperin asettaminen



1 Paina OK-painiketta.

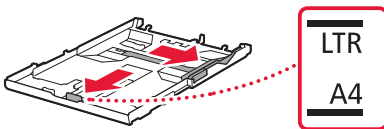


2 Poista kasetti tulostimesta ja poista kasetin kansi.



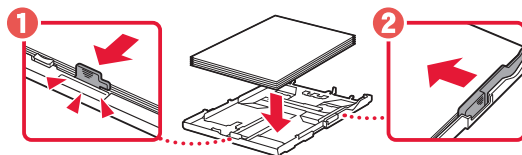
3 Liu'uta paperiohjaimet erilleen.

- Liu'uta oikeanpuoleinen paperiohjain oikeaan reunaan. Kohdista etummainen paperiohjain Letter- tai A4-merkin kanssa.

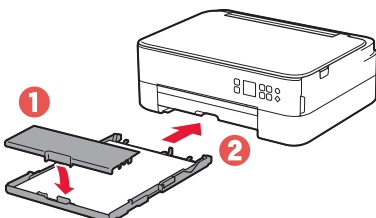


4 Lisää paperia.

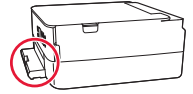
- Aseta vähintään 2 arkkia tavallista Letter- tai A4-kokoista paperia.
- Aseta paperi edessä olevaa paperiohjainta vasten ja kohdista oikeanpuoleinen paperiohjain paperin leveyteen.



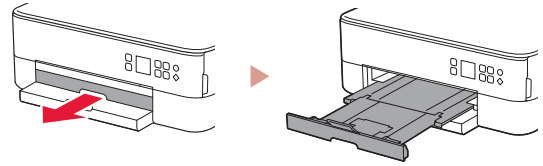
5 Aseta kasetin kansi ja aseta kasetti takaisin paikoilleen.



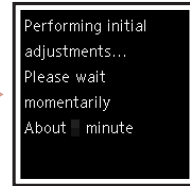
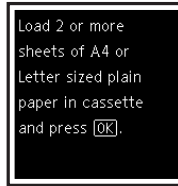
- Katso sitä sivulta ja varmista, että se on kaavion kaltainen.



6 Vedä paperin luovutustaso esiin.



7 Paina OK-painiketta.



»»» Huomautus

Kohdistusprosessissa tulostetaan kaksi kaksipuolista arkkia. Älä vedä paperia ulos tai käytä tulostinta, ennen kuin kohdistus on valmis.

8 Tarkista, että seuraava näyttö tulee näkyviin.



Jos käytät tulostinta ilman yhteyttä muihin laitteisiin, asetus on valmis.

Valitse yhteysmenetelmä, joka parhaiten vastaa tulostimen käyttötappaa.

- Tulostimen käyttö ilman yhteyttä muihin laitteisiin
 - ➔ Asennus on nyt valmis.
- Tulostimen käyttö tietokone tai älypuhelin yhdistettynä
 - ➔ Jatka seuraavalta sivulta.

Mitä laitetta olet yhdistämässä?



Tietokone



Tietokone ja
älypuhelin





Älypuhelin

6-a

Yhdistäminen tietokoneeseen

Jos käytät useita tietokoneita, suorita nämä vaiheet jokaiselle tietokoneelle.



- 1 Avaa tietokoneesta Canon-verkkosivusto.
 <https://ij.start.canon>
- 2 Valitse  **Määrittäminen**.
- 3 Anna tulostinmallin nimi ja valitse **Siirry**.
- 4 Valitse **Aloita**.
- 5 Valitse **(B) Yhdistäminen tietokoneeseen/älypuhelimeseen**.
 - Seuraavat vaiheet ovat Windows-käyttäjille.
- 6 Valitse **Lataa**.
- 7 Suorita ladattu tiedosto.
- 8 Noudata näytön ohjeita.
 - Näissä toiminnoissa voi kestää hetken.
 - Jos haluat liittää myös älypuhelimien, katso kohtaa "6-b. Yhdistäminen älypuhelimeseen" sivulla 5.

6-b

Yhdistäminen älypuhelimien

Jos käytät useita älypuhelimia, suorita nämä vaiheet jokaiselle älypuhelimelle.



1 Asenna "Canon PRINT Inkjet/SELPHY" -sovellus älypuhelimien.



- Etsi App Store- tai Google Play -kaupassa tekstiä "Canon PRINT".
- Lataa sovellus avaamalla ensin Canon-sivusto.



2 Avaa asennettu sovellus ja lisää sitten tulostin noudattamalla sovelluksen näytön ohjeita.



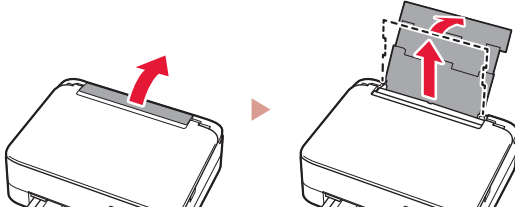
Kun olet lisännyt tulostimen, voit tulostaa älypuhelimesta.

Jos tulostat valokuvia, katso kohtaa "Valokuvapaperin asettaminen" sivulla 6.

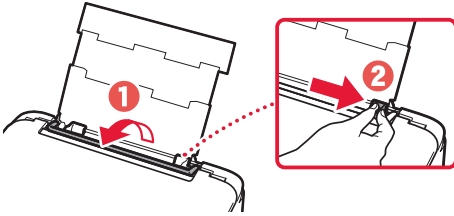
Valokuvapaperin asettaminen

Valokuvapaperia voi lisätä ainoastaan takalokeroon.

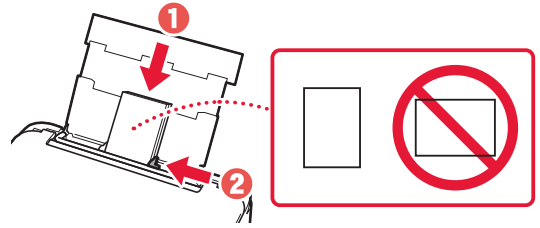
- 1 Avaa takalokeron kansi ja avaa sitten paperituki.



- 2 Avaa syöttöaukon kansi ja liu'uta oikeanpuoleinen paperiohjain oikeaan reunaan.

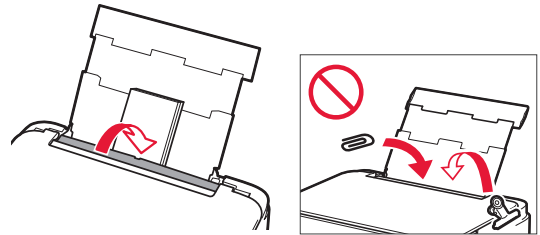


- 3 Aseta useita arkkeja valokuvapaperia tulostuspuoli ylöspäin, ja liu'uta sitten sivun paperiohjain paperipinon reunaan vasten.



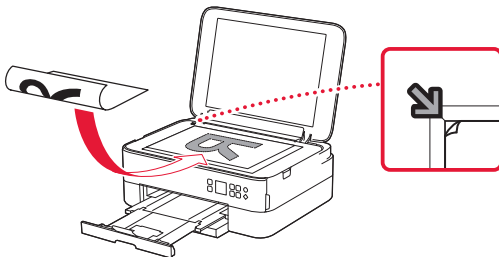
- 4 Sulje syöttöaukon kansi.

- Jatka asetetun paperin tietojen asettamista noudattamalla näytössä näkyviä ohjeita.



Kopiointi

- 1 Kytke tulostimen virta.
- 2 Aseta tavallista Letter- tai A4-kokoista paperia.
- 3 Avaa asiakirjankansi ja aseta asiakirja tasolle kopioitava puoli alaspäin. Kohdista asiakirja kohdistusmerkkiin (↘).



- 4 Sulje asiakirjankansi.
- 5 Paina **OK**-painiketta.
- 6 Valitse **Kopiointiasetukset (Copy settings)**, ja paina sitten **OK**-painiketta.
- 7 Määritä tulostusasetukset ▲-, ▼- ja **OK**-painikkeilla.



- 8 Paina **Aloita (Start)**-painiketta.

Trademarks

- Windows is a trademark or registered trademark of Microsoft Corporation in the U.S. and/or other countries.
- App Store is a trademark of Apple Inc., registered in the U.S. and other countries.
- Google Play is a registered trademark of Google LLC.

Marques

- Windows est une marque ou une marque déposée de Microsoft Corporation aux États-Unis et/ou dans d'autres pays.
- App Store est une marque d'Apple Inc., déposées aux États-Unis et dans d'autres pays.
- Google Play est une marque déposée de Google LLC.

Marken

- Windows ist eine Marke oder eine eingetragene Marke der Microsoft Corporation in den USA und/oder anderen Ländern.
- App Store ist eine Marke von Apple Inc. in den USA und anderen Ländern.
- Google Play ist eine eingetragene Marke von Google LLC.

Handelsmerken

- Windows is een handelsmerk of gedeponeerd handelsmerk van Microsoft Corporation in de Verenigde Staten en/of andere landen.
- App Store is een handelsmerk van Apple Inc., gedeponeerd in de V.S. en andere landen.
- Google Play is een gedeponeerd handelsmerk van Google LLC.

Marchi

- Windows è un marchio commerciale o marchio registrato di Microsoft Corporation, registrato negli Stati Uniti e/o in altri Paesi.
- App Store è un marchio di Apple Inc., registrati negli Stati Uniti e in altri paesi.
- Google Play è un marchio registrato di Google LLC.

Marcas registradas

- Windows é uma marca comercial ou marca registrada da Microsoft Corporation nos EUA e/ou em outros países.
- App Store é uma marca registrada da Apple Inc., registradas nos EUA e em outros países.
- Google Play é uma marca registrada do Google LLC.

Marcas comerciales

- Windows es una marca comercial o marca comercial registrada de Microsoft Corporation, registrada en EE.UU. y/o en otros países.
- App Store es una marca comercial de Apple Inc., registradas en EE.UU. y en otros países.
- Google Play es una marca comercial registrada de Google LLC.

Εμπορικά σήματα

- Η επωνυμία Windows είναι εμπορικό σήμα ή σήμα κατατεθέν της Microsoft Corporation στις Η.Π.Α. ή/και σε άλλες χώρες.
- App Store είναι εμπορικό σήμα της Apple Inc., καταχωρημένα στις ΗΠΑ και σε άλλες χώρες.
- Το Google Play είναι σήμα κατατεθέν της Google LLC.

Varumärken

- Windows Vista är ett varumärke eller registrerat varumärke som tillhör Microsoft Corporation i USA och/eller andra länder.
- App Store är ett varumärke som tillhör Apple Inc. och som är registrerade i USA och andra länder.
- Google Play är ett registrerat varumärke som tillhör Google LLC.

Varemerker

- Windows er et varemerke eller et registrert varemerke for Microsoft Corporation i USA og/eller andre land.
- App Store er et varemerke for Apple Inc., registrert i USA og andre land.
- Google Play er et registrert varemerke for Google LLC.

Varemærker

- Windows er et varemærke eller et registreret varemærke tilhørende Microsoft Corporation i USA og/eller andre lande.
- App Store er et varemærke, der tilhører Apple Inc., som er registreret i USA og andre lande.
- Google Play er et registreret varemærke tilhørende Google LLC.

Tavamerkit

- Windows on Microsoft Corporationin tavamerkit tai rekisteröity tavamerkit Yhdysvalloissa ja/tai muissa maissa.
- App Store ovat Apple Inc. -yhtiön tavamerkkejä, jotka on rekisteröity Yhdysvalloissa ja muissa maissa.
- Google Play on Google LLC:n rekisteröity tavamerkit.



Access Online Manual
Zugriff auf das Online-Handbuch
Accedere al Manuale online
Acceso al Manual en línea
Läs Onlinehandbok
Åbn Online vejledning

Accès au Manuel en ligne
Online handleiding openen
Acesse o Manual On-line
Αποκτήστε πρόσβαση στο Εγχειρίδιο Online
Gå til Nettbasert manual
Online-käyttöopas-oppaan käyttö

From your browser

À partir de votre navigateur

Über Ihren Browser

Via de browser

Dal browser

Do seu navegador

Desde su navegador

Από το πρόγραμμα περιήγησής σας

Från webbläsaren

Fra nettleseren din

Fra din browser

Selaimesta

