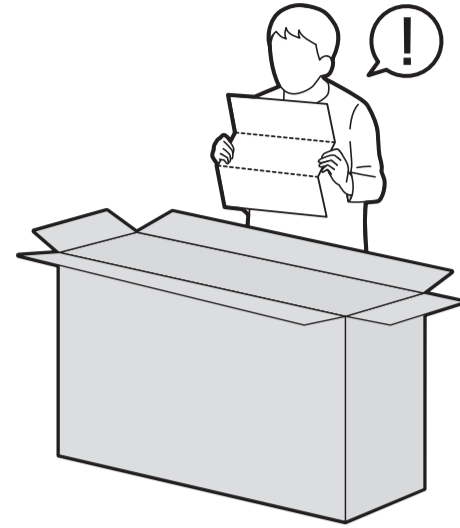
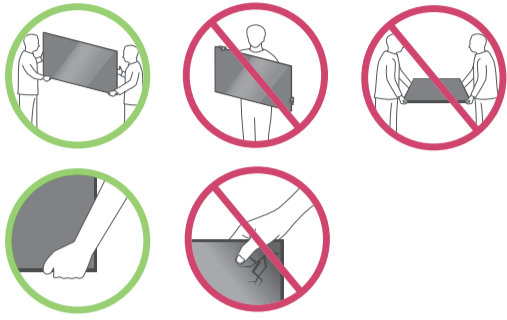
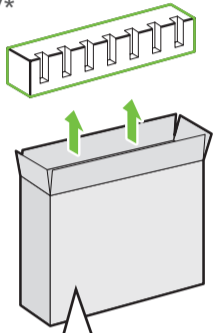


UP77\*

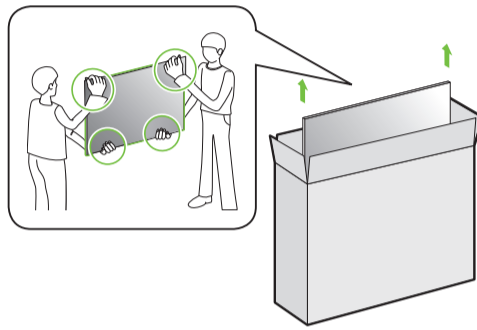


50/55UP77\*

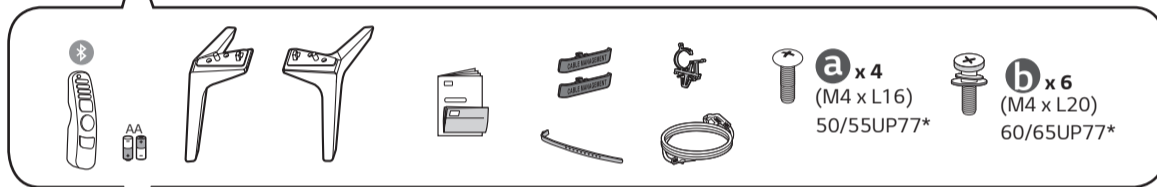
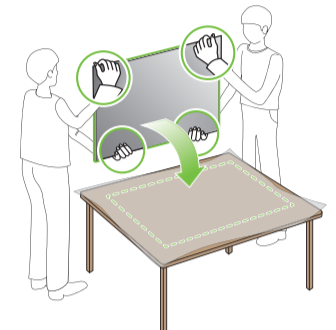
1



2

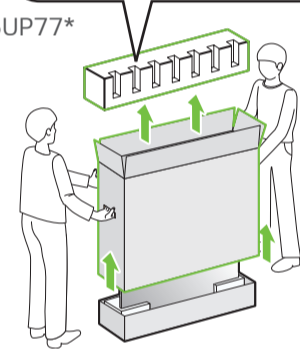


3

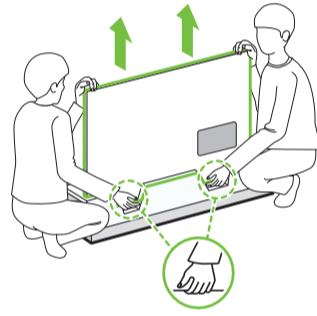


60/65UP77\*

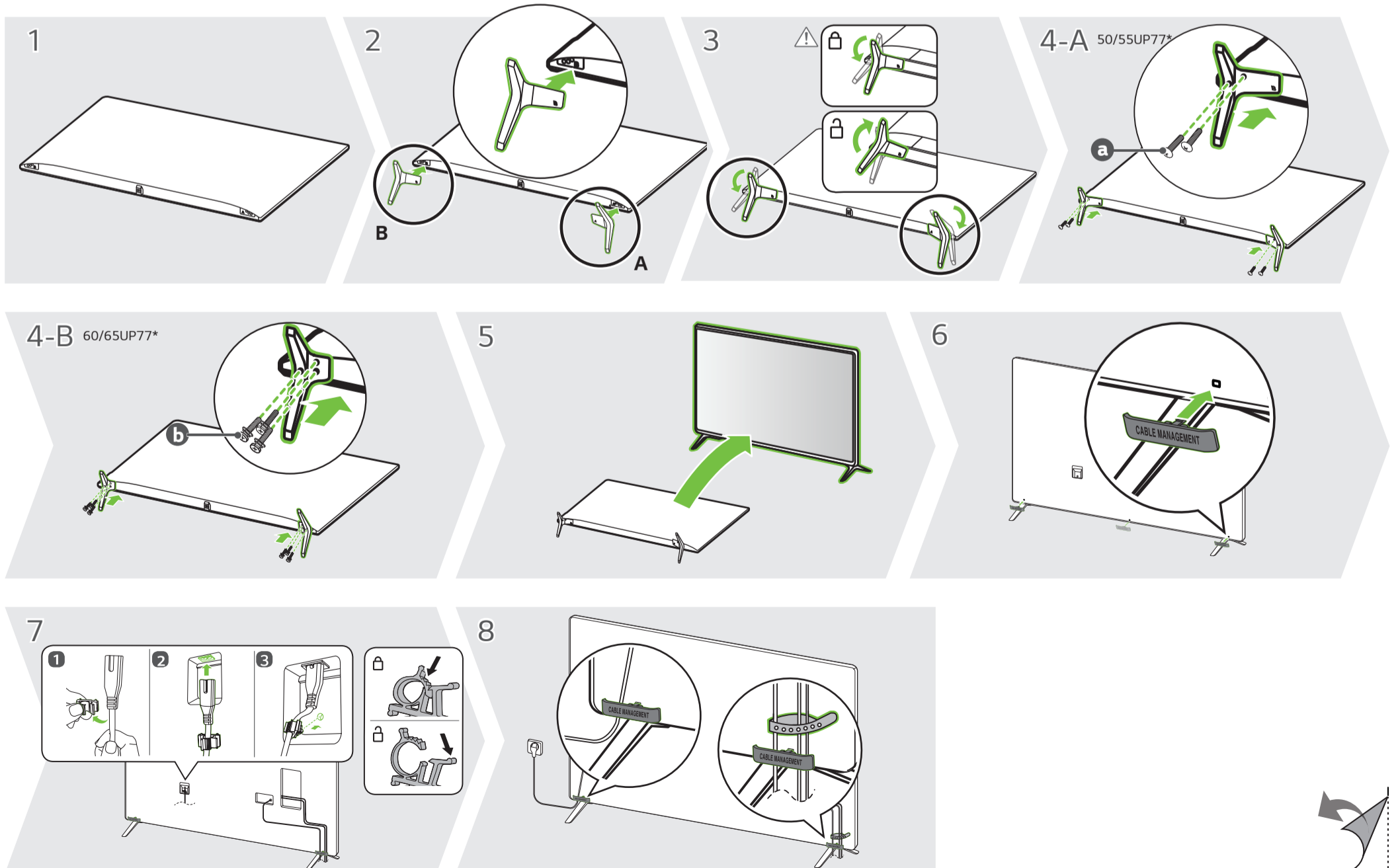
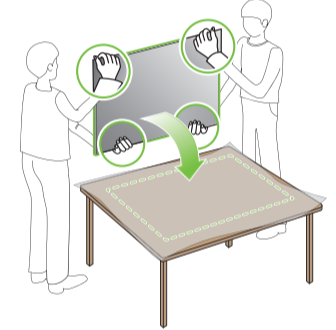
1

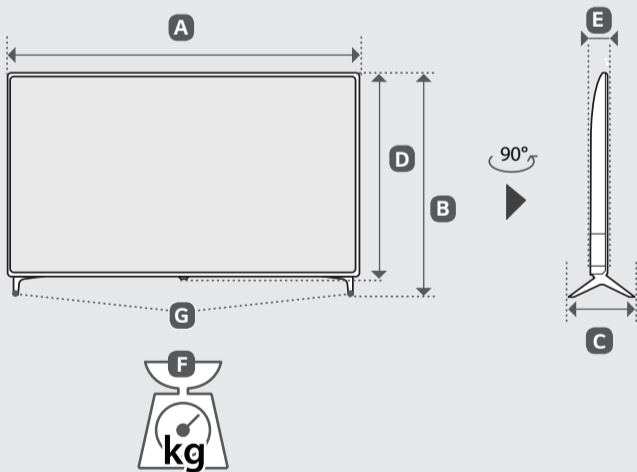
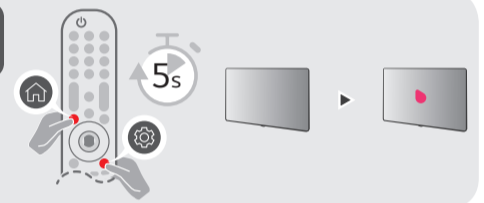
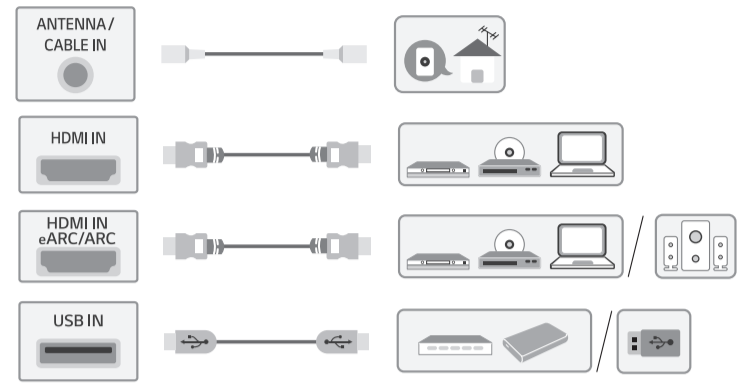
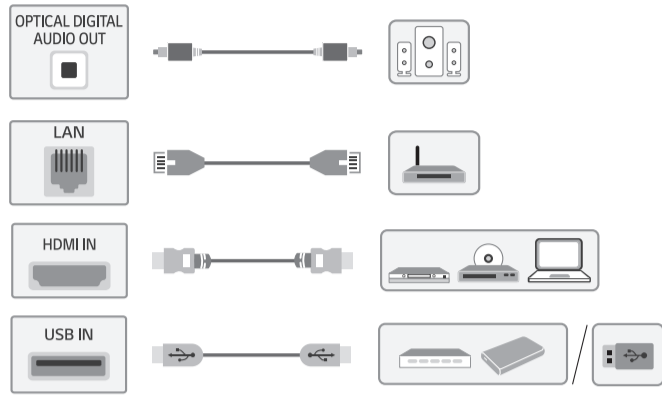


2



3





	A	B	C	D	E	F	F-G
	(mm)					(kg)	
50UP7750PSB	1121	713	231	651	57.1	11.9	11.7
50UP7720PSC	1121	708	235	651	57.1	11.8	11.7
55UP7750PSB	1235	776	231	715	57.5	14.2	14.0
55UP7720PSC	1235	772	235	715	57.5	14.1	14.0
60UP7750PSB	1356	852	269	783	57.5	17.4	17.1
65UP7750PSB	1454	906	269	838	57.7	21.8	21.5
Power requirement				AC 100-240 V - 50 / 60 Hz			



English • Read **Safety and Reference**.

⊕ : Depending on model