

XEROX®

WorkCentre® 7132



print | copy | scan | fax | email

PostScript® User Guide



ME3614E4-1
Copyright © 2006 Xerox Corporation. All rights reserved.

www.xerox.com/support

© 2006 by Fuji Xerox Co., Ltd. All rights reserved.

Copyright protection claimed includes all forms and matters of copyrighted material and information now allowed by statutory or judicial law or hereinafter granted, including without limitations, material generated from the software programs which are displayed on the screen, such as icons, screen displays, looks etc.

Xerox[®], The Document Company[®], the digital X[®] and all Xerox products mentioned in this publication are trademarks of Xerox Corporation. Product names and trademarks of other companies are hereby acknowledged.

The information in this document is correct at the time of publication. Xerox reserves the right at any time to change the information without notice. Changes and technical updates will be added in subsequent editions of the documentation. For the latest information go to www.xerox.com.

Table of Contents

1	Checking the PostScript® Kit Contents	7
2	Operation with Windows 95/98/Me	9
	About the Software	9
	Bundled Software	9
	Hardware/Software Requirements	10
	Computer System	10
	Basic Software	10
	Installing the Adobe PostScript Printer Driver	10
	Installation Procedure	10
	If you click Disagree in the License Agreement	11
	Printer Driver Properties	11
	Configuration Tab Settings	12
	Settings	12
	Options Tab Settings	14
	Settings	14
	Color Settings Tab Settings	15
	Settings	15
	Advanced Settings	16
	Watermarks Tab Settings	16
	Settings	16
	Output Settings Tab Settings	17
	Job Type	17
	Settings	18
	How to Use Help	19
3	Operation with Windows NT 4.0	21
	About the Software	21
	Bundled Software	21
	Hardware/Software Requirements	22
	Computer System	22
	Basic Software	22
	Installing the Adobe PostScript Printer Driver	22
	Installation Procedure	22
	If you click Disagree in the License Agreement	23
	Device Options and Print Settings	23

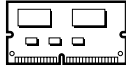
Device Settings Tab Settings	24
Settings	24
Configuration Tab Settings	25
Settings	25
Advanced Tab Settings	27
Settings	27
Paper/Output Tab Settings	30
Job Type	30
Settings	31
Image Options Tab Settings	32
Settings	32
Layout Tab Settings	33
Settings	33
How to Use Help	34
4 Operation with Windows 2000, Windows XP and Windows Server 2003	35
About the Software	35
Bundled Software	35
Hardware/Software Requirements	36
Computer System	36
Basic Software	36
Installing the Printer Driver	36
Installation Procedure	36
Device Options and Print Settings	38
Device Settings Tab Settings	39
Settings	39
Configuration Tab Settings	40
Settings	40
Bi-Directional Communication Setup	41
Advanced Tab Settings	42
Settings	42
Paper/Output Tab Settings	45
Job Type	45
Settings	46
Status	47
Image Options Tab Settings	47
Settings	47
Layout Tab Settings	49
Settings	49
How to Use Help	49

5	Operation on Macintosh Computers	51
	About the Software	51
	Bundled Software	51
	Hardware/Software Requirements	52
	Computer System	52
	Basic Software	52
	Installing the Adobe PostScript Printer Driver	52
	Installation Procedure (Mac OS 9.x or earlier)	52
	Setting the Printer Driver (Mac OS 9.x or earlier)	53
	Installation Procedure (Mac OS X)	55
	Adding a Printer (Mac OS X)	55
	Installable Options	57
	For Mac OS 9.x and earlier	57
	For Mac OS X	58
	Settings	58
	Printer Specific Driver Settings	59
	For Mac OS 9.x and earlier	59
	Settings	60
	For Mac OS X	62
	Job Type Settings	62
	Job Accounting Settings	63
	Image Options Settings	64
	Printer Features Settings	65
	Installing the Screen Fonts	67
6	Appendix	69
	Cautions and Limitations	69
	Troubleshooting	69
	Print operation	69
7	Index	71

1 Checking the PostScript® Kit Contents

The devices and components of the kit are described below.

If any of the following are missing, contact the Xerox Welcome Center.



PostScript Program ROM

This ROM makes PostScript printing possible with the printer.



1 PostScript Driver Library CD-ROM

Includes the PostScript drivers and screen fonts.

Documentations

- License Agreement
- Single sheet (PostScript DC readme sheet)
- PostScript Kit Installation Guide

2 Operation with Windows 95/98/Me

The following information can be found in this chapter:

- About the Software
 - Bundled Software
 - Hardware/Software Requirements
- Installing the Adobe PostScript Printer Driver
 - Installation Procedure
- Printer Driver Properties
 - Configuration Tab Settings
 - Options Tab Settings
 - Color Settings Tab Settings
 - Watermarks Tab Settings
 - Output Settings Tab Settings
- How to Use Help

About the Software

This section describes the software for Windows 95, Windows 98, and Windows Me included on the PostScript Driver Library CD-ROM.

Bundled Software

The following items are included on the enclosed CD-ROM.

Adobe PostScript Printer Driver (ver. 4.5.3) and PPD files - Adobe PostScript driver and PPD files (for Windows 95/98/Me).

ATM (Adobe Type Manager) (ver. 4.1) - Helps you to install typefaces and activate and manage your fonts.

Adobe Screen Fonts (TrueType/PostScript) - Includes 136 screen fonts (19 TrueType fonts and 117 PostScript fonts), which are compatible with the printer fonts. ATM is used to install the PostScript screen fonts. When using these fonts to print, it is recommended that you use the Adobe PostScript (4.5.3) printer driver.

Adobe Acrobat Reader - Allows you to view and print PDF files on all major computing platforms.

Hardware/Software Requirements

The minimum system requirements for the Windows 95/Windows 98/Windows Me printer driver are described below.

Computer System

Personal computer in which the Windows 95/Windows 98/Windows Me OS can operate.

Basic Software

Windows 95, Windows 98 or Windows Me

Installing the Adobe PostScript Printer Driver

Install Adobe PostScript 4.5.3 printer driver onto Windows 95, Windows 98 or Windows Me by following the procedure below.

This section describes how to install the printer driver for Windows 98, as an example.

It is possible to cancel installation of the printer driver by clicking [Cancel] in the dialog box displayed during installation. You can also click [Back] to ignore the settings in that dialog box and return to the previous dialog box.

Installation Procedure

1. Start Windows 98.
2. On the Start menu, point to Settings and click [Printers].
3. In the Printers window, double-click [Add Printer].
4. Click [Next].
5. Select how the printer is connected to the computer and click [Next].
Select [Local printer] when the printer is connected directly to the computer.
Otherwise, select [Network printer]. The following is an example of a local printer.

NOTE: When you select [Network printer], specify the path to the printer in the network path or queue name box.

6. Insert the PostScript Driver Library CD-ROM in your CD-ROM drive.
7. Click [Have Disk].
8. Enter "Drive Name:\English\PrinterDriver\win9x_Me" in the "Copy manufacturer's files from:" box and click [OK].
In this guide, we have used "E:" as the CD-ROM drive. If you are using a different drive for the CD-ROM, specify accordingly.

NOTE: Click [Browse] to specify a folder on the CD-ROM.

9. Select your printer model from the Printers list and click [Next].

10. Select the port that you are using and click [Next].
11. Type a name for the printer and specify whether you want to use the printer as the default printer, then click [Next].
12. Specify whether to print a test page, then click [Finish].
Installation begins.
13. Read the End User License Agreement and click [Agree].
If you click [Disagree], see *If you click Disagree in the License Agreement on page 11* for details.
14. Confirm that a printer has been added in the Printers window.
This completes installation of the printer driver. Remove the CD-ROM from the drive.
See *Printer Driver Properties on page 11* to configure the printer.
Store your CD-ROM in a safe place.

If you click Disagree in the License Agreement

Click [No] to return to the operation and continue.

Click [Yes] to cancel the installation. A printer is added to the Printers window, but the printer driver is not installed properly.

When you right-click the printer and click [Properties] from the menu, the Re-installation tab is added to the printer driver properties dialog box. Follow the directions on that tab.

When you finish reinstalling the printer driver, see *Printer Driver Properties on page 11* to set up the printer.

Printer Driver Properties

This section describes printer specific settings included in the printer driver properties.

- Configuration Tab
- Options Tab
- Color Settings Tab
- Watermarks Tab
- Output Settings Tab

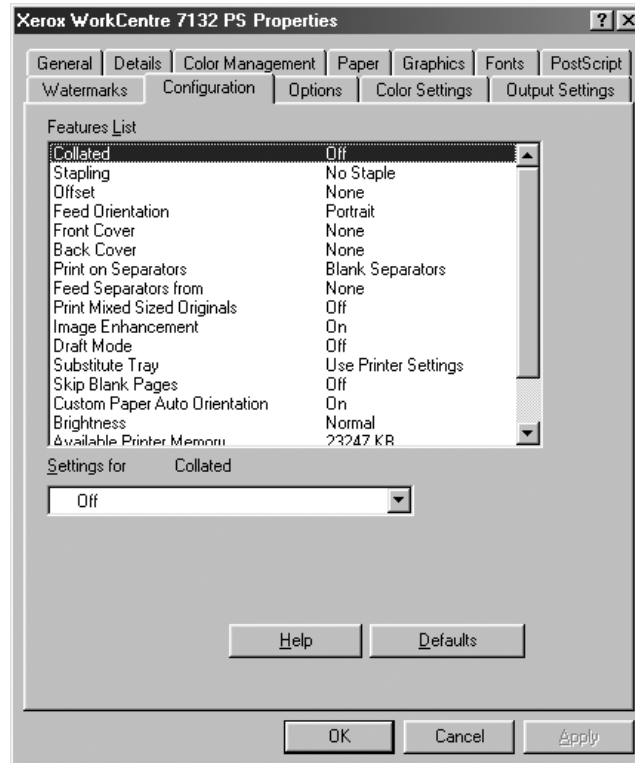
NOTE: You can also refer to Help for explanations of these settings. See *How to Use Help on page 19* for details about how to use Help.

To view the printer driver properties, select the printer icon in the Printers window, then click [Properties] on the File menu.

Configuration Tab Settings

This section describes the settings of the Configuration tab.

Select the function that you want to set in the Features List and change the settings in the Change box below.



NOTE: You can restore defaults by clicking [Defaults].

NOTE: The settings that can be selected vary depending on which options have been installed. Change these settings only after confirming that the option settings are complete. See *Options Tab Settings* on page 14.

Settings

Collated - Selects whether to collate a printed sets from a multiple-page file.

Stapling - Specifies whether to staple printed documents and the position of the staple. You can staple 2 to 50 sheets of 80 g/m² or lighter paper.

NOTE: You cannot use staples when anything other than Finisher Tray is selected for Output bin in the Paper tab.

Offset - The position of individual jobs or sets of copies are shifted to either side of the output tray to enable easy separation.

Feed Orientation - Specifies the paper orientation when printing from the bypass tray. When feeding the short edge of the paper first, select [Landscape]. When feeding the long edge of the paper, select [Portrait].

Front Cover - Specifies the paper tray that the front cover stock is to be fed from.

Back Cover - Specifies the paper tray that the back cover stock is to be fed from.

Print on Separators - Specifies whether to print on the transparency separators as well as the transparency.

Feed Separators from - Specifies the paper tray that transparency separators are to be fed from. When [Auto] is selected, the tray set on the machine is used as the feed destination.

Print Mixed Sized Originals - Specifies whether you are printing mixed sized originals for 2 Sided Print.

Image Enhancement - Specifies whether to use the Image Enhancement function. Selecting [On] smoothes out boundaries when printing. This reduces jagged edges by artificially increasing the resolution of the image. When printing a bitmapped image composed of coarse halftone dots, smooth color gradation is impossible in certain situations. In this case, select [Off].

Draft Mode - Specifies whether to reduce the amount of toner used when printing drafts. When [On] is selected, the overall printed color becomes lighter. This is best for printing documents when high print quality is not necessary.

Substitute Tray - Specifies what action to take when the paper for the print size is not loaded in the machine.

Use Printer Settings - Use the printer settings. The settings can be confirmed on the control panel.

Display Message - Displays paper supply messages on the control panel. Printing is impossible until paper is supplied.

Use Closest Size (Adjust to Fit) - Selects the closest paper size and automatically adjusts the image size as necessary.

Use Closest Size (No Zoom) - Selects the closest paper size and prints the same size as the image.

Use Larger Size (Adjust to Fit) - Selects paper larger than the original and automatically adjusts the image size as necessary.

Use Larger Size (No Zoom) - Selects paper larger than the original and prints the same size as the image.

Select Tray 5 (Bypass) - Feeds from bypass tray.

Skip Blank Pages - Specifies whether to skip blank pages when printing documents that contain blank pages.

Custom Paper Auto Orientation - Specifies whether to correct the orientation of the custom paper.

Brightness - Adjusts the level of brightness applied to the printed images.

Available Printer Memory - Enter the amount of usable printer memory (in KB) in the Edit box. Usually, it is not necessary to change this.

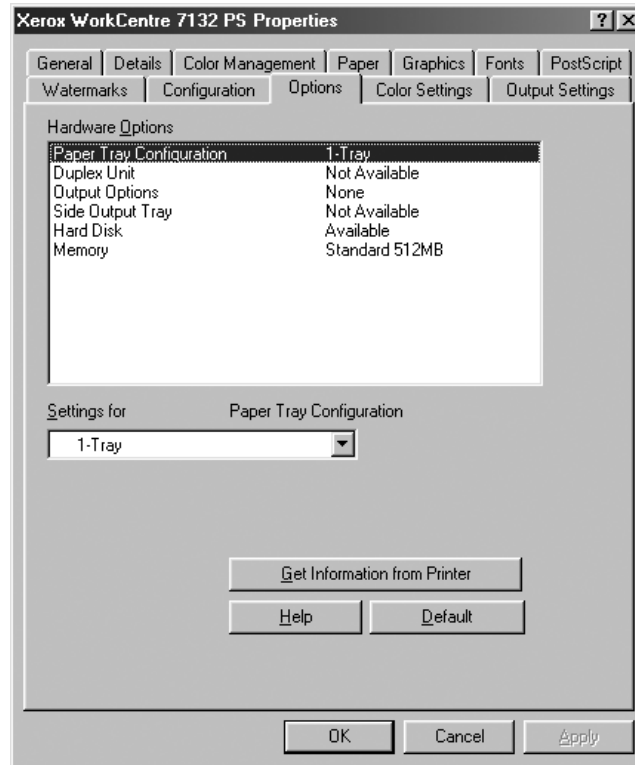
Available Font Cache - Enter the amount of memory available for the font cache (in KB) in the Edit box. Usually, it is not necessary to change this.

Account Mode - Specifies if all users or only System Administrators can change authentication related settings.

Options Tab Settings

This section describes the settings in the Options tab.

Select the items in Hardware Options and change them in the Change box below. To use this function, it is necessary to make appropriate settings in this tab.



NOTE: You can restore defaults by clicking [Default].

Settings

Paper Tray Configuration - Specifies the paper tray type installed on the machine. When [1-Tray] is selected, Tray 1 is available (standard configuration).

When [3-Tray] is selected, Tray 2 and Tray 3 are installed.

When [3-Tray (High Capacity)] is selected, the two-tray module Tray 2 and Tray 3 is installed.

Duplex Unit - Specifies whether the duplex unit is installed. If it is, set to [Available].

Output Options - Specifies whether the inner output tray or finisher output unit is installed.

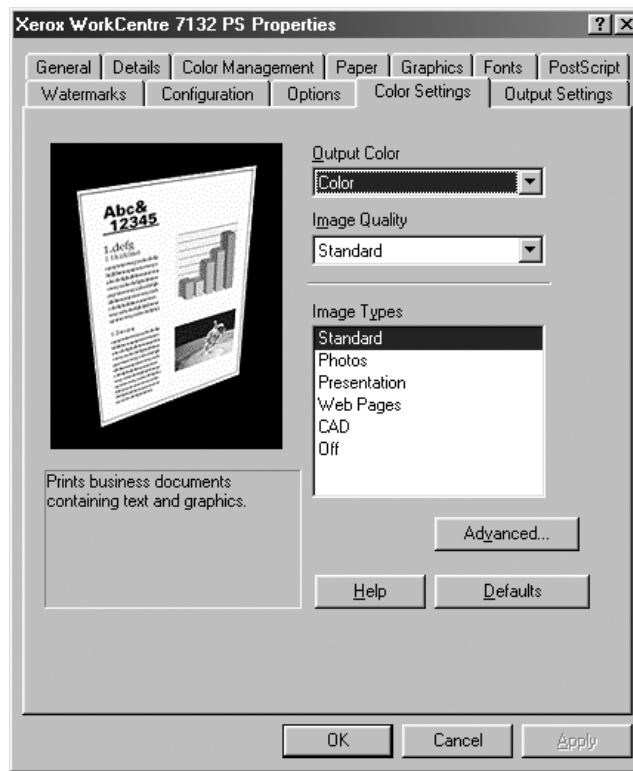
Side Output Tray - Specifies whether the side output tray is installed. If it is, set to [Available].

Hard Disk - Specifies whether the Hard Disk (optional) is installed. If it is, set to [Available].

Memory - Specifies the amount of printer memory.

Color Settings Tab Settings

This section describes the settings in the Color Settings tab.



NOTE: You can restore defaults by clicking [Defaults].

Settings

Output Color - Specifies printing in full color mode or black and white mode.

Image Quality - Specifies the printing output priority.

High Speed - Speed is given priority over image quality.

Standard - Printing occurs with full image quality.

Image Types - Specifies the color adjustment printing mode optimized for the input type.

Standard - Printing is optimized for business documents containing text and graphs.

Photos - Printing is optimized for high-gradation images to best reproduce photos.

Presentation - Printing is optimized for presentation materials to produce vivid colors.

Web Pages - Printing is optimized for low-resolution images such as web pages and screen displays.

CAD - Printing is optimized for reproducing fine lines and fine text.

Off - Printing occurs with no color adjustment.

Advanced Settings

Screen - Specifies the printer engine screening mode.

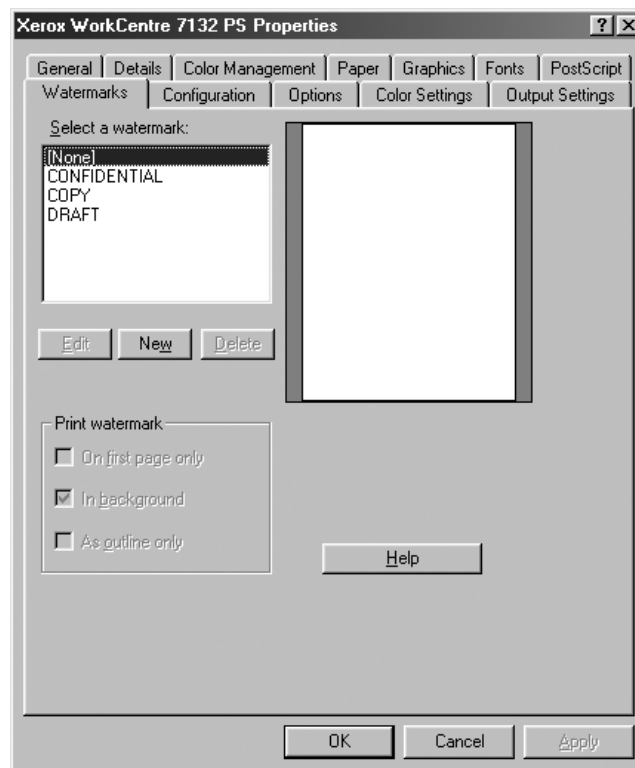
RGB Gamma Correction - Specifies the color adjustment input source gamma value.

Gray Guaranteed - Specifies printing non-raster image areas with black toner only.

Display warning message about Color Settings - When checked, the printer driver displays the Optimum Color Settings dialog box if an image color matching option is selected on the Graphics tab. The Image Color Matching settings are only available when an ICC profile is linked in the Color Management tab.

Watermarks Tab Settings

This section describes the settings in the Watermarks tab.



Settings

Select a watermark - Specifies the watermark to add to the print job. Click [Delete] to remove the watermark from the list. Click [Edit] or [New] to display the watermark editing screen where you can specify the text, font name, font size, font style, angle, position on the page, and RGB color of the watermark.

Print watermark - Specifies how and when to print the watermark.

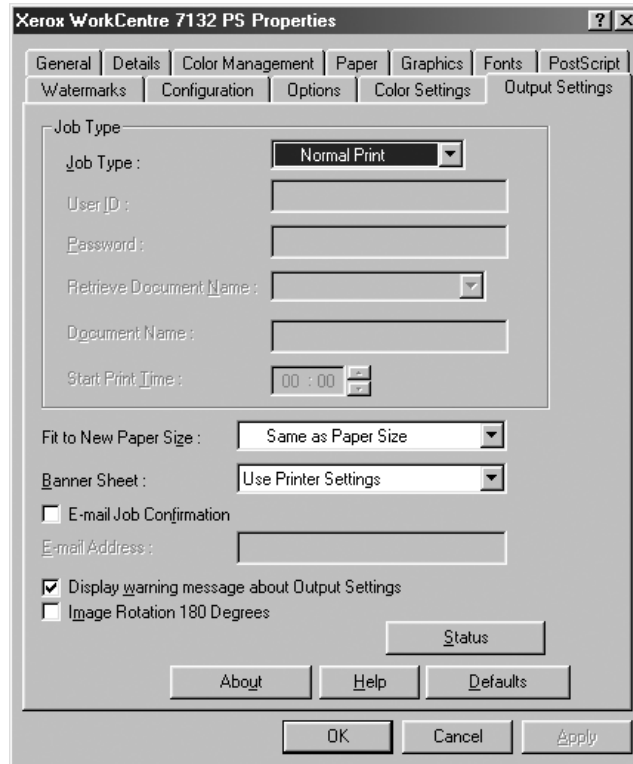
When [On first page only] is selected, the watermark is printed on the first page only of a print job.

When [In background] is selected, the watermark is printed behind any image on the page.

When [As outline only] is selected, the watermark is printed as an outline font style.

Output Settings Tab Settings

This section describes the settings in the Output Settings tab.



NOTE: You can restore defaults by clicking [Defaults].

Job Type

You can specify the print function for Secure Print, Sample Set, and Delayed Print.

Secure Print temporarily stores print jobs in the printer, and then prints them when print instructions are received from the control panel.

Sample Set outputs only one copy when multiple copies are specified. If there is no problem, the remaining sets can be printed.

Delayed Print temporarily stores print jobs in the printer, and then prints them at the scheduled time.

To use Secure Print, Sample Set, or Delayed Print feature, input the User ID and password for Job Type. The password entered appears as asterisks(*).

Normal Print - Select when you do not want to output secure prints, a sample set, or delayed prints.

Secure Print - Select when you want to output secure prints.

Sample Set - Select when you want to output a sample set.

NOTE: The Collated setting must be selected in the Page Setup tab, under the application's File menu, when using Job Type.

Delayed Print - Select when you want to output delayed prints.

See the On-line Help for details on the operation of the printer.

User ID - Displays the User ID for Job Type. The user ID displayed is the User ID specified on the Configuration tab. This option can only be selected when the setting on the Configuration tab has been completed. This is a display-only item and cannot be changed here.

Password - Displays password for Secure Print password specified in the Configuration tab. Each digit that you enter appears as an asterisk (*). This option can only be selected when the setting on the Configuration tab has been completed. This is a display-only item and cannot be changed here.

Retrieve Document Name - Select the method of specifying the document name. If you have selected Auto Retrieve, the valid document name can be up to 24 alphanumeric characters.

Document Name - When "Enter Document Name" is selected in the Retrieve Document Name list, a document name up to 24 alphanumeric characters can be specified.

Start Print Time - Specifies the time that a Delayed Print job will be printed. Place the cursor in the hour or minute box and press the up or down triangle to specify the start time. You can also set the time by entering the time directly into the boxes. The default setting is 00:00.

Settings

Fit to New Paper Size - Selects the size of the paper used for output. The output is automatically enlarged or reduced, depending on the paper size selected here and the paper size selected in the Paper tab.

For example, when you select [B5] in Paper Size on the Paper tab, and select [A4] as the new size, the output is automatically enlarged and printed.

When you select [None], the job is printed based on the Paper Size selected in the application.

Banner Sheet - Specifies whether to add a banner sheet to printed output.

When [Use Printer Settings] is selected, the printer settings are used.

When [Printer Start Page] is selected, outputs the banner sheet using the start-sheet.

E-mail Job Confirmation - Specifies whether to use the Mail Notify feature to notify the end of the print job via e-mail. Default is [Off].

E-Mail Address - Specifies the e-mail address for the Mail Notify feature.

Display warning message about Output Settings - When printing, the printer driver checks whether the Output Size setting conflicts with other settings.


When this is activated, a dialog box appears if there is a conflict during printing. Check the content of the dialog box and resolve the conflicting function to continue printing.

When this is inactive, no conflict dialog box appears, but the conflicting setting is automatically resolved and printing continues.

Image Rotation 180 Degrees - Set the checkbox to rotate the prints by 180°. Default is [Off].

How to Use Help

The following describes how to use Help.

1. Click  and a ? mark appears next to the pointer. You can then click items for which you need explanations, opening a pop-up window that contains relevant information. Click inside the pop-up window to close it.
2. Click [Help], an explanation of the current tab appears as Help information.

3 Operation with Windows NT 4.0

The following information can be found in this chapter:

- About the Software
 - Bundled Software
 - Hardware/Software Requirements
- Installing the Adobe PostScript Printer Driver
 - Installation Procedure
- Device Options and Print Settings
 - Device Settings Tab Settings
 - Configuration Tab Settings
 - Advanced Tab Settings
 - Paper/Output Tab Settings
 - Image Options Tab Settings
 - Layout Tab Settings
- How to Use Help

About the Software

This section describes the software for Windows NT 4.0 that is included on the PostScript Driver Library CD-ROM.

Bundled Software

The following items are included on the CD-ROM.

Adobe PostScript Printer Driver (ver. 5.2.2) and PPD files - Adobe PostScript driver and PPD files (for Windows NT 4.0).

ATM (Adobe Type Manager) (ver. 4.1) - Helps you to install typefaces and activate and manage your fonts.

Adobe Screen Fonts (TrueType/PostScript) - Includes 136 screen fonts (19 TrueType fonts and 117 PostScript fonts), which are compatible with the printer fonts. ATM is used to install the PostScript screen fonts. When using these fonts to print, it is recommended that you use the Adobe PostScript (5.2.2) printer driver.

Adobe Acrobat Reader - Allows you to view and print PDF files on all major computing platforms.

Hardware/Software Requirements

The minimum system requirements for the Windows NT 4.0 printer driver are described below.

Computer System

Personal computer in which the Windows NT 4.0 OS can operate.

Basic Software

Windows NT Workstation 4.0/Windows NT Server 4.0 (Service Pack 6a or later)

Installing the Adobe PostScript Printer Driver

Install the Adobe PostScript 5.2.2 printer driver onto Windows NT by following the procedure below.

It is possible to cancel installation of the printer driver by clicking [Cancel] in the dialog box displayed during installation. You can also click [Back] to delete the settings in that dialog box and return to the previous dialog box.

Installation Procedure

1. Start Windows NT 4.0.

NOTE: Log on as a Power User group member or an Administrator. Refer to the Windows NT 4.0 documentation for details about the Power User group.

2. On the Start menu, point to Settings and click [Printers].
3. In the Printer window, double-click [Add Printer].
4. Select how the printer is connected to the computer and click [Next]. Select [My Computer] if the printer is connected directly to the computer or to the network in the TCP/IP(LPD) environment. Select [Network printer server] in other cases. The following is an example of a local printer.

NOTE: Specify the target printer in the Connect to Printer dialog box if you selected [Network printer server].

5. Select the port you are using and click [Next].
6. Insert the PostScript Driver Library CD-ROM in the CD-ROM drive.
7. Click [Have Disk].
8. Enter "Drive Name:\English\PrinterDriver\NT40" in the "Copy manufacturer's files from:" box and click [OK].
In this guide, we have used "E:" as the CD-ROM drive. If you are using a different drive for the CD-ROM, specify accordingly.

NOTE: Click [Browse] to specify a folder on the CD-ROM.

9. Select your printer model from the Printers list and click [Next].
 10. Enter the printer name, specify if you want to use the printer as the default printer, and click [Next].
 11. Select [Not shared] and click [Next].

We recommend that you install the driver on each computer with the procedure appropriate to the Operating System.
 12. Specify whether to print a test page, then click [Finish].

Installation begins.
 13. Read the End User License Agreement and click [Agree].

When you click [Disagree], see *If you click Disagree in the License Agreement on page 23* for details.
 14. Confirm that the printer has been added in the Printers window.
- This completes installation of the printer driver. Remove the CD-ROM from the drive. See *Device Options and Print Settings on page 23* to configure the printer. Store your CD-ROM in a safe place.

If you click Disagree in the License Agreement

Click [No] to return to step 13 and continue the operation.

Click [Yes] to cancel the installation. A printer is added in the Printers window, but the printer driver is not installed properly.

Select the printer and click [Properties] on the File menu. The Re-installation tab is added to the printer driver properties dialog box. Follow the directions on that tab.

When you finish reinstalling, see *Device Options and Print Settings on page 23* to set up the printer.

Device Options and Print Settings

This section describes printer specific settings for printer driver properties and document presets.

- Installable Options in the Device Settings Tab
- Configuration Tab
- Printer Specific Sections in the Advanced Tab
- Paper/Output Tab
- Image Options Tab
- Layout Tab

NOTE: You can also refer to Help for explanations of these settings. See *How to Use Help on page 34*.

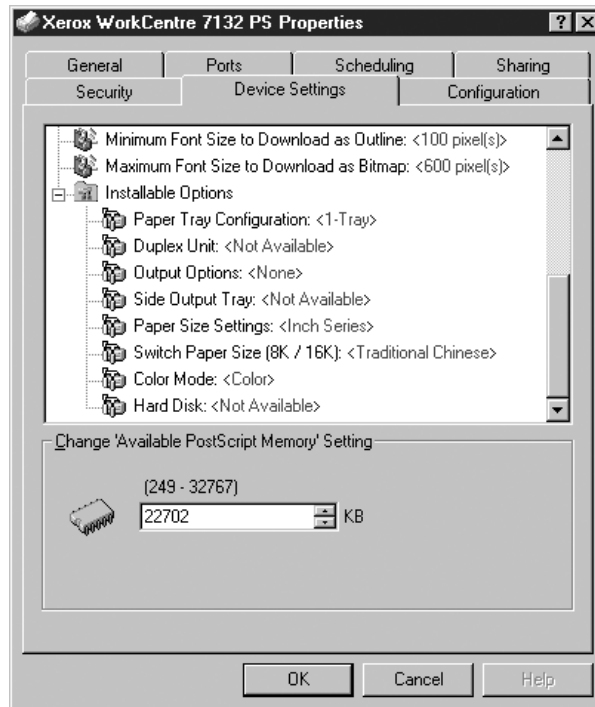
To view the Device Settings or Configuration tabs, select the printer icon in the Printers window, then click Properties on the File menu.

To view the Advanced, Paper/Output, Image Options, or Layout tabs, select the printer icon in the Printers window, then click Document Defaults on the File menu.

Device Settings Tab Settings

This describes Installable Options in the Device Settings tab. To print correctly, it is necessary to make appropriate settings in this tab.

Select the items in Installable Options and change the settings in the Change Setting box at the bottom of the tab.



Settings

Paper Tray Configuration - Specifies the paper tray type installed on the machine. When [1-Tray] is selected, Tray 1 is available (standard configuration).

When [3-Tray] is selected, Tray 2 and Tray 3 are installed.

When [3-Tray (High Capacity)] is selected, the two-tray module Tray 2 and Tray 3 is installed.

Duplex Unit - Specifies whether the duplex unit is installed. If it is, set to [Available].

Output Options - Specifies whether the inner output tray or finisher output unit is installed.

Side Output Tray - Specifies whether the side output tray is installed. If it is, set to [Available].

Paper Size Settings - Specifies the paper size group for different areas to enable the selection of paper size common to that location.

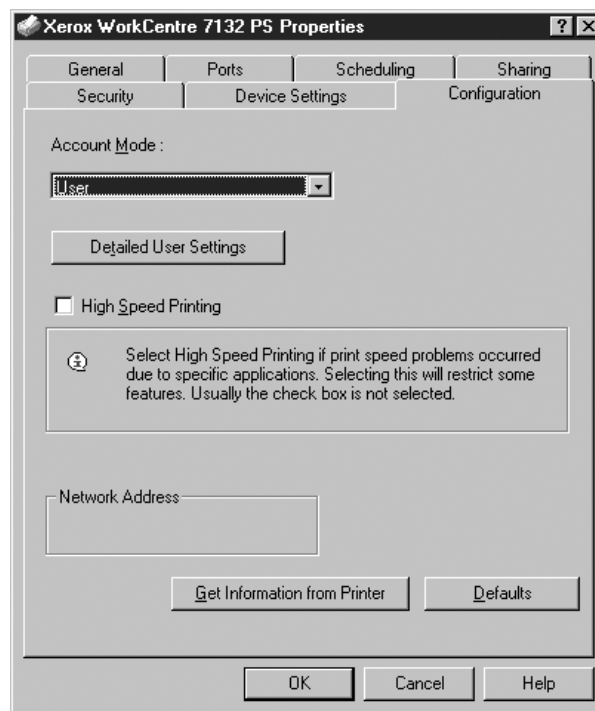
Switch Paper Size (8K/16K) - Indicate your language preference to enable the set of 8K and 16K paper size that is best suited to your needs.

Color Mode - Specifies the color setting. If [Black and White] is selected, all colors will be printed in black.

Hard Disk - Specifies whether the Hard Disk (optional) is installed. If it is, set to [Available].

Configuration Tab Settings

This section describes the settings of the Configuration tab.



NOTE: You can restore defaults by clicking [Defaults].

Settings

Account Mode - Specifies if all users or only System Administrators can change authentication related settings.

Detailed User Settings - Sets the authentication information.

Use Default User Settings - The values set in this feature are used as the authentication parameters.

- **Specify User ID** - Select how to specify User ID.
- **User ID** - Enter a User ID.
- **Password** - Enter the Password for the User ID.

- **Account ID** - Enter an Account ID.
- **Billing ID** - Enter a User ID for Charge Print.
- **Password** - Enter the Password for the Billing ID.

Prompt User for Settings - Select this feature to display the [Enter User Details] dialog-box each time you start printing. The user is then required to enter authentication information such as their User ID.

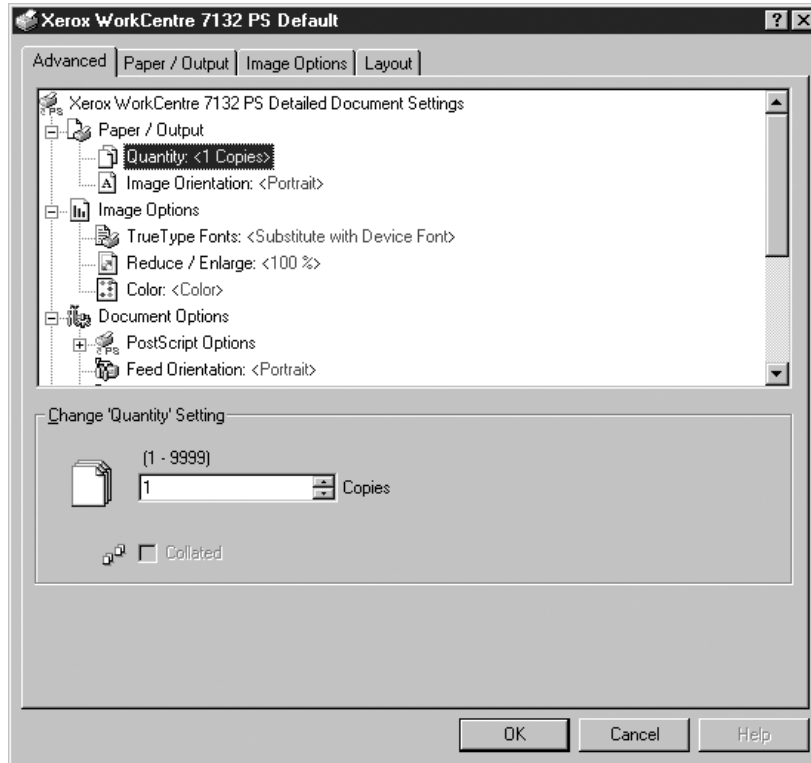
- **Display Previous User Details** - Check the box to store the user details entered in the [Enter User Details] dialog-box, and display the details in the box as a default next time.
- **Hide User_ID (***)** - Check the box to specify whether a user ID is to be displayed or hidden when it is entered.
- **Hide Account ID (***)** - Check the box to specify whether an account ID is to be displayed or hidden when it is entered.

High Speed Printing - Set this feature to make improvements in print speed, when using an application that generates PostScript directly.

Get Information from Printer - Clicking [Get Information from Printer] when the machine is used as a network printer verifies the printer option installation state using the print port to which the printer is connected, and reflects this in the Hardware Options setting.

Advanced Tab Settings

This section describes the settings in the Advanced tab. Select the items in the Advanced tab and change the settings in the Change Setting box at the bottom of the tab.



NOTE: The settings that can be selected vary depending on which options have been installed. Change these settings only after confirming that the option settings are complete. See *Device Settings Tab Settings* on page 24.

Settings

Quantity - Specifies the number of output copies.

Collated - Specifies that the output copies be collated.

Image Orientation - Specifies the image orientation, portrait or landscape, for stapling mixed sized originals.

TrueType Fonts - Specifies the font handling for documents containing TrueType fonts.

Substitute with Device Font - Substitute TrueType fonts with fonts resident on the machine.

Download as Softfont - Download the font to the machine as a softfont.

Reduce/Enlarge - Specifies the reduction/enlargement ratio as a percentage between 25 and 400%.

Color - Specifies image reproduction in full color or black and white.

PostScript Output Format - Specifies the default PostScript file output format for when saving to a file.

Optimize for Speed - For faster printer processing.

Optimize for Portability - Reduce portability errors.

Encapsulate PostScript - Outputs to an encapsulated PostScript file.

Archive Format - Outputs to an archive format file.

TrueType Font Download Method - Specifies the font handling for documents containing TrueType fonts when saving to a file.

Automatic - Automatic font handling.

Outline - Include as vector outlines.

Bitmap - Include as bitmap images.

Native TrueType - Include TrueType fonts in their native format.

PostScript Language Level - Specifies the PostScript language level for compatibility with other devices (1, 2, or 3) when saving to a file.

Print PostScript Error Message - Specifies whether to report PostScript errors when saving to a file.

Mirror Image - Specifies whether to create mirror images for left-hand and right-hand pages when saving to a file.

Feed Orientation - Specifies the paper orientation when printing from the bypass tray. When feeding the short edge of the paper first, select [Landscape]. When feeding the long edge of the paper, select [Portrait].

Offset - The position of individual jobs or sets of copies are shifted to either side of the output tray to enable easy separation.

Front Cover - Specifies the paper tray that the front cover stock is to be fed from.

Back Cover - Specifies the paper tray that the back cover stock is to be fed from.

Transparency Separators - Specifies the separators to be inserted between transparencies.

Feed Separators from - Specifies the paper tray that transparency separators are to be fed from. When [Auto] is selected, the tray set on the machine is used as the feed destination.

Print on Separators - Specifies whether to print on the transparency separators as well as the transparency.

Paper Type (Separators) - Specifies a paper type for the transparency divider.

Image Enhancement - Specifies whether to use the Image Enhancement function. Selecting [On] smoothes out boundaries when printing. This reduces jagged edges by artificially increasing the resolution of the image. When printing a bitmapped image composed of coarse halftone dots, smooth color gradation is impossible in certain situations. In this case, select [Off].

Gray Guaranteed - Specifies printing non-raster image areas in black only.

Image Rotation 180 Degrees - Set the checkbox to rotate the prints by 180°. Default is [Off].

Skip Blank Pages - Specifies whether to skip blank pages when printing documents that contain blank pages.

Draft Mode - Specifies whether to reduce the amount of toner used when printing drafts. When [On] is selected, the overall printed color becomes lighter. This is best for printing documents when high print quality is not necessary.

Banner Sheet - Specifies whether to add a banner sheet to the printed output.

When [Use Printer Settings] is selected, the printer settings are used.

When [Printer Start Page] is selected, outputs the banner sheet using the start-sheet.

E-mail Job Confirmation - Specifies whether to use the Mail Notify feature to notify the end of the print job via e-mail. Default is [Off].

E-Mail Address - Specifies the e-mail address for the Mail Notify feature.

Substitute Tray - Specifies what action to take when the paper for the print size is not loaded in the machine.

Use Printer Settings - Use the printer settings. The settings can be confirmed on the control panel.

Display Message - Display paper supply messages on the control panel. Printing is impossible until paper is supplied.

Use Closest Size (Adjust to Fit) - Selects the closest paper size and automatically adjusts the image size as necessary.

Use Closest Size (No Zoom) - Selects the closest paper size and prints the same size as the image.

Use Larger Size (Adjust to Fit) - Selects paper larger than the original and automatically adjusts the image size as necessary.

Use Larger Size (No Zoom) - Selects paper larger than the original and prints the same size as the image.

Select Tray 5 (Bypass) - Feeds from bypass tray.

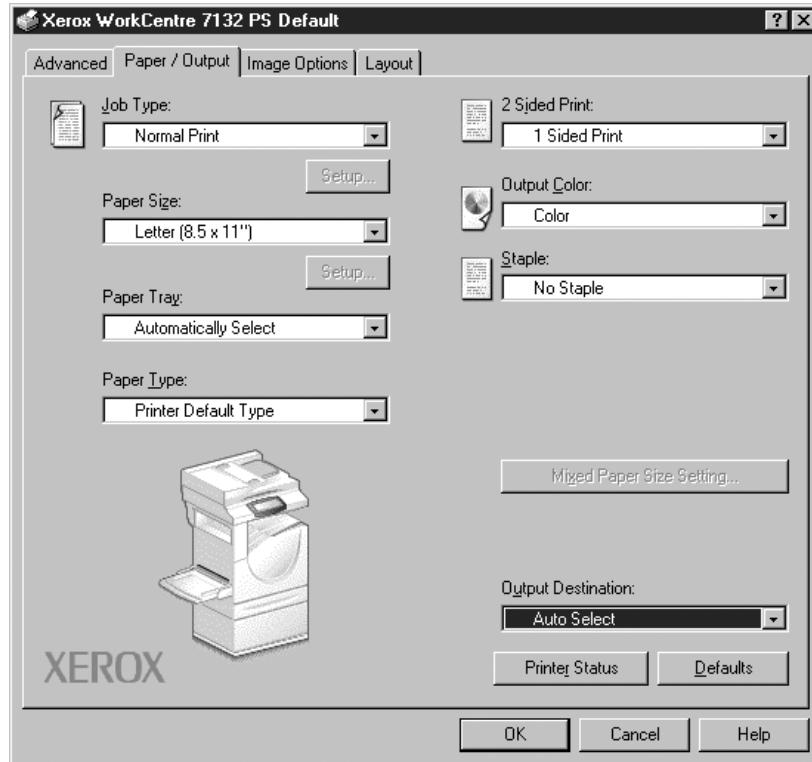
Custom Paper Auto Orientation - Specifies whether to automatically correct the paper orientation when printing to a custom paper size.

Print Mixed Sized Originals - Specifies whether you are printing mixed sized originals for 2 Sided Print.

EMF Spooling - Specifies the spool format of the print data on the hard disk.

Paper/Output Tab Settings

This section describes the settings in the Paper/Output tab.



NOTE: You can restore defaults by clicking [Defaults].

Job Type

You can specify the print function for Secure Print, Sample Set, and Delayed Print.

Secure Print temporarily stores print jobs in the printer, and then prints them when print instructions are received from the control panel.

Sample Set outputs only one copy when multiple copies are specified. If there is no problem, the remaining sets can be printed.

Delayed Print temporarily stores print jobs in the printer, and then prints them at the scheduled time.

To use Secure Print, Sample Set, or Delayed Print feature, input the User ID and password for Job Type. The password entered appears as asterisks(*).

Normal Print - Select when you do not want to output secure prints, a sample set, or delayed prints.

Secure Print - Select when you want to output secure prints.

Sample Set - Select when you want to output a sample set.

Delayed Print - Select when you want to output delayed prints.

See the On-line Help for details on the operation of the printer.

User ID - Displays the User ID for Job Type. The user ID displayed is the User ID specified on the Configuration tab. This option can only be selected when the setting on the Configuration tab has been completed. This is a display-only item and cannot be changed here.

Password - Displays the password for Secure Print as specified in the Configuration tab. Each digit entered appears as an asterisk (*). This option can only be selected when the setting on the Configuration tab has been completed. This is a display-only item and cannot be changed here.

Retrieve Document Name - Select the method for specifying the document name. If you have selected Auto Retrieve, the valid document name can be up to 24 alphanumeric characters.

Document Name - When "Enter Document Name" is selected in the Retrieve Document Name list, a document name up to 24 alphanumeric characters can be specified.

Start Print Time - Specifies the time that a Delayed Print job will be printed. Place the cursor in the hour or minute box and press the up or down triangle to specify the start time. You can also set the time by entering the time directly into the boxes. The default setting is 00:00.

Settings

Paper Size - Specifies the paper size for printing.

Paper Tray - Specifies the paper tray for printing.

Paper Type - Specifies the paper type for printing.

2 Sided Print - Specifies whether to print on both sides of the paper. This option requires the optional Duplex unit.

Output Color - Specifies printing in full color mode or black and white mode.

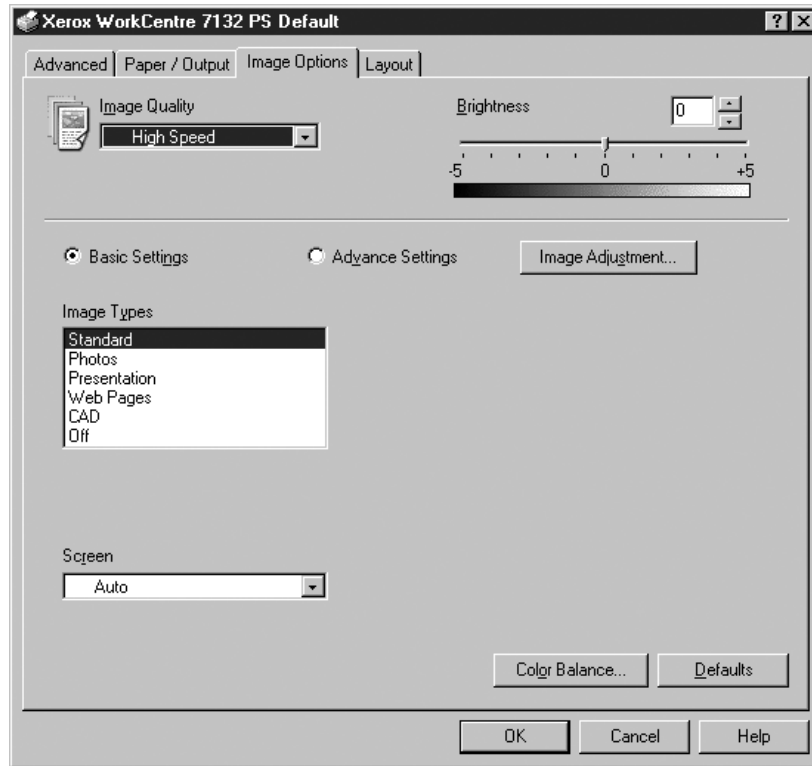
Staple - Specifies the stapling location and number of staples. This option requires the optional finisher unit.

Mixed Paper Size Setting - Displays the paper size of the mixed pages.

Output Destination - Specifies the output tray.

Image Options Tab Settings

This section describes the settings in the Image Options tab.



NOTE: You can restore defaults by clicking [Defaults].

Settings

Image Quality - Specifies the printing output priority.

High Speed - Speed is given priority over image quality.

Standard - Printing occurs with full image quality.

Brightness - Adjusts the level of brightness applied to the printed images.

Basic Settings

Image Type - Specifies the color adjustment printing mode optimized for the input type.

Standard - Printing is optimized for business documents containing text and graphs.

Photos - Printing is optimized for high-gradation images to best reproduce photos.

Presentation - Printing is optimized for presentation materials to produce vivid colors.

Web Pages - Printing is optimized for low-resolution images such as web pages and screen displays.

CAD - Printing is optimized for reproducing fine lines and fine text.

Off - Printing occurs with no color adjustment.

Screen - Specifies the printer engine screening mode.

Color Balance - Displays a screen that allows you to adjust the intensity of the color in highlights, midtones, and shadows.

Advanced Settings/Image Adjustment

RGB Color Correction - Specifies the RGB color correction method.

RGB Gamma Correction - Specifies the color adjustment input source gamma value.

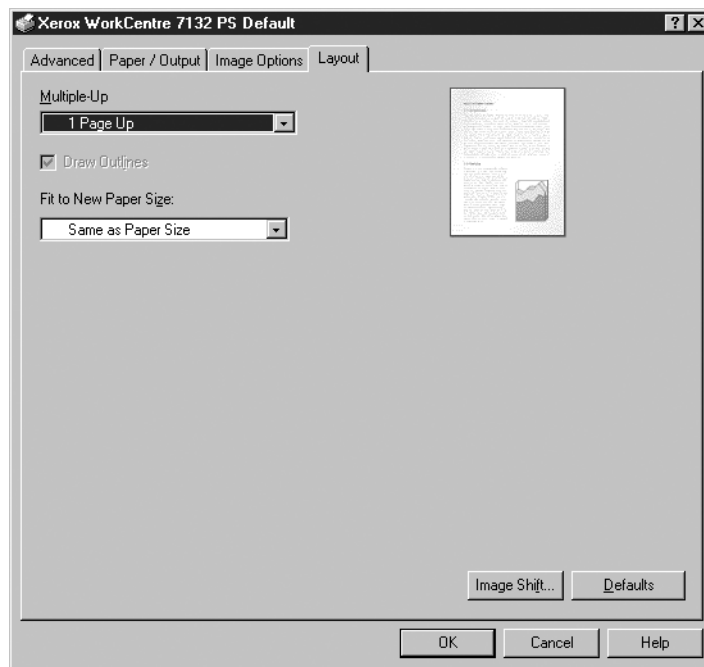
Enter RGB Profile - Specifies the display or working color space for accurate reproduction of RGB color.

RGB Color Temperature - Specifies the RGB color temperature.

CMYK Color Correction - Specifies the color correction target ink type for CMYK.

Layout Tab Settings

This section describes the settings in the Layout tab.



NOTE: You can restore defaults by clicking [Defaults].

Settings

Multiple-Up - Prints multiple consecutive pages of a document on a single sheet of paper.


Draw Outlines - Draws a border around each page image printed on a single sheet of paper using the Multiple-Up feature.

Fit to New Paper Size - Specifies the paper size on which to print the image.

Image Shift - Specifies the image shift position for a binding margin. Specify the edge position and the extent of the image shift on [Side 1] of the paper. You can also specify a margin for [Side 2] for 2 sided printing along the same edge of the paper.

How to Use Help

The following describes how to use Help.

1. Click  and a ? mark appears next to the pointer. You can then click items for which you need explanations, opening a pop-up window that contains relevant information. Click inside the pop-up window to close it.
2. Click [Help], an explanation of the current tab appears as Help information.

4 Operation with Windows 2000, Windows XP and Windows Server 2003

The following information can be found in this chapter:

- About the Software
 - Bundled Software
 - Hardware/Software Requirements
- Installing the Printer Driver
 - Installation Procedure
- Device Options and Print Settings
 - Device Settings Tab Settings
 - Configuration Tab Settings
 - Advanced Tab Settings
 - Paper/Output Tab Settings
 - Image Options Tab Settings
 - Layout Tab Settings
- How to Use Help

About the Software

This section describes the software for Windows 2000, Windows XP and Windows Server 2003 included with the PostScript Driver Library CD-ROM.

Bundled Software

The following items are included on the CD-ROM and are necessary when using the printer on Windows 2000, Windows XP and Windows Server 2003.

Microsoft PostScript 5.2 Driver and PPD files - Microsoft PostScript 5 Driver and PPD files (for Windows 2000, Windows XP and Windows Server 2003).

Adobe Acrobat Reader - Allows you to view and print PDF files on all major computing platforms.

Hardware/Software Requirements

The minimum system requirements for the Windows 2000, Windows XP and Windows Server 2003 printer driver are described below.

Computer System

Personal computer in which the Windows 2000/Windows XP/Windows Server 2003 OS can operate.

Basic Software

- Windows 2000 Professional
- Windows 2000 Server
- Windows 2000 Advanced Server
- Windows XP Professional Edition
- Windows XP Home Edition
- Windows Server 2003

Installing the Printer Driver

Install MS PostScript 5 printer driver onto Windows 2000, Windows XP and Windows Server 2003 by following the procedure below.

This section described how to install the printer driver for Windows 2000, as an example.

NOTE: It is possible to cancel installation of the printer driver by clicking [Cancel] in the dialog box displayed during installation. You can also click [Back] to delete the settings in that dialog box and return to the previous dialog box.

NOTE: If you want to set up Port 9100, refer to the System Administration Guide.

Installation Procedure

1. Start Windows 2000.

NOTE: Log on as a Power User group member or an Administrator. Refer to the Windows 2000 documentation for details about the Power User group.

2. On the Start menu, point to Settings and click [Printers].
3. In the Printers window, double-click [Add Printer].
4. Click [Next].
5. Select how the printer is connected to the computer and click [Next].
Select [Local printer] if the printer is connected directly to the computer or to the

network in the TCP/IP(LPD) environment. Otherwise, select [Network printer]. The following is an example of a Local printer.

NOTE: When you select [Local printer], deselect the “Automatically detect and install my Plug and Play printer” check box.

NOTE: Specify the target printer in the Connect to printer dialog box if you selected [Network printer].

6. Select the port you are using and click [Next].

When the printer is connected in the TCP/IP(LPD) environment:

- 1) Click [Create a new port].
- 2) Select Standard TCP/IP Port in the Type list and click [Next].
- 3) Click [Next].
- 4) Enter the IP address of the printer in Printer Name or IP Address, then click [Next].

Click [Finish] in the dialog box that will be displayed.

7. Insert the PostScript Driver Library CD-ROM in the CD-ROM drive.

8. Click [Have Disk].

9. Enter “Drive Name:\English\PrinterDriver\win2000” in the “Copy manufacturer’s files from:” box and click [OK].

In this guide, we have used “E:” as the CD-ROM drive. If you are using a different drive for the CD-ROM, specify accordingly.

NOTE: Click [Browse] to specify a folder on the CD-ROM.

10. Select your printer model from the Printers list and click [Next].

11. Enter the printer name, set whether you want to use it as the default printer, and click [Next].

12. Select [Do not share this printer] and click [Next].

We recommend that you install the driver on each computer with the procedure appropriate to the Operating System.

13. Specify whether to print a test page, then click [Next].

14. After confirming the settings displayed, click [Finish].

NOTE: If the dialog box “Digital Signature Not Found” appears, click [Yes] to continue the installation.

Installation begins.

15. Confirm that the printer has been added in the Printers window.

This completes the installation of the printer driver. Remove the CD-ROM from the drive.

See *Device Options and Print Settings* on page 38 to configure the printer.

Store your CD-ROM in a safe place.

Device Options and Print Settings

This section describes printer specific settings for printer driver properties. For other items, refer to the Help.

- Installable Options in the Device Settings Tab
- Configuration Tab
- Printer Specific Sections in the Advanced Tab
- Paper/Output Tab
- Image Options Tab
- Layout Tab

NOTE: You can also refer to Help for explanations of these settings. See *How to Use Help* on page 49.

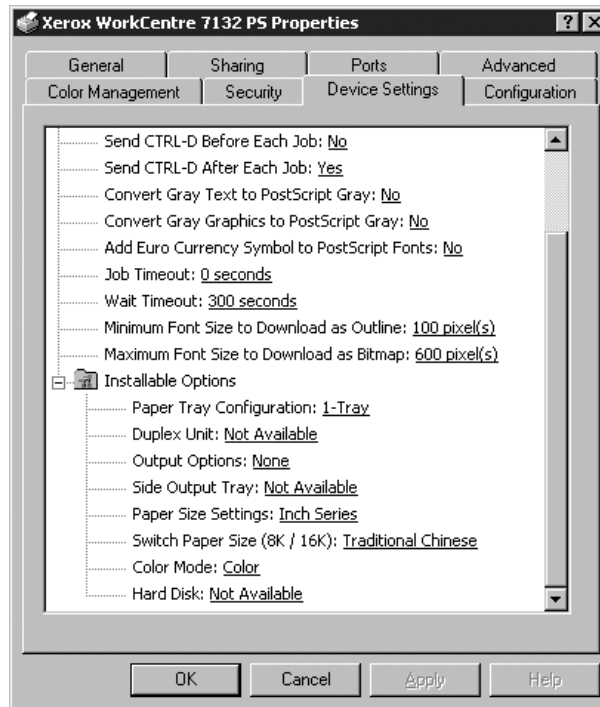
To view the Device Settings or Configuration tabs, select the printer in the Printers window, then click [Properties] on the File menu.

To view the Advanced, Paper/Output, Image Options or Layout tabs, select the printer icon in the Printers window, then click Document Defaults on the File menu.

Device Settings Tab Settings

This section describes Installable Options in the Device Settings tab. To print correctly, it is necessary to make the appropriate settings in this tab.

Select the items in Installable Options and change the settings in the menu that appears on the right.



Settings

Paper Tray Configuration - Specifies the paper tray type installed on the machine. When [1-Tray] is selected, Tray 1 is available (standard configuration).

When [3-Tray] is selected, Tray 2 and Tray 3 are installed.

When [3-Tray (High Capacity)] is selected, the two-tray module Tray 2 and Tray 3 is installed.

Duplex Unit - Specifies whether the duplex unit is installed. If it is, set to [Available].

Output Options - Specifies whether the inner output tray or finisher output unit is installed.

Side Output Tray - Specifies whether the side output tray is installed. If it is, set to [Available].

Paper Size Settings - Specifies the paper size group for different areas to enable the selection of paper size common to that location.

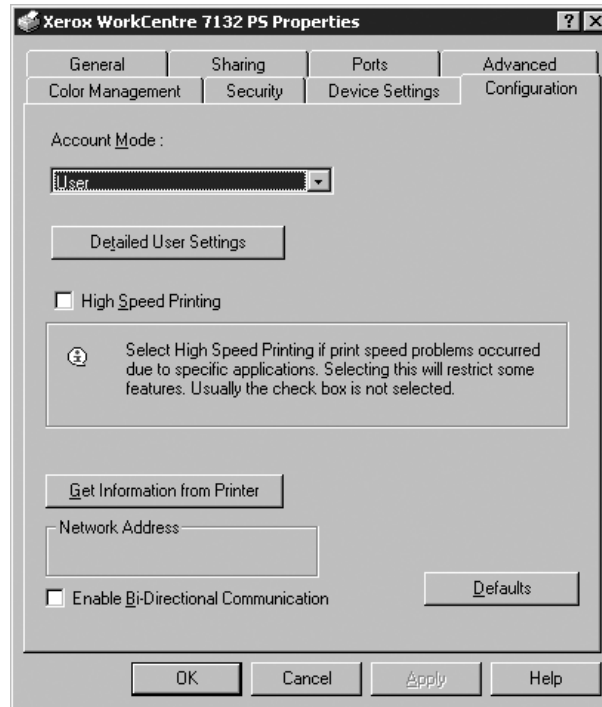
Switch Paper Size (8K/16K) - Indicate your language preference to enable the set of 8K and 16K paper size that is best suited to your needs.

Color Mode - Specifies the color setting. If [Black and White] is selected, all colors will be printed in black.

Hard Disk - Specifies whether the Hard Disk (optional) is installed. If it is, set to [Available].

Configuration Tab Settings

This section describes the settings of the Configuration tab.



NOTE: You can restore defaults by clicking [Defaults].

Settings

Account Mode - Specifies if all users or only System Administrators can change authentication related settings.

Detailed User Settings - Sets the authentication information.

Use Default User Settings - The values set in this feature are used as the authentication parameters.

- **Specify User ID** - Select how to specify User ID.
- **User ID** - Enter a User ID.
- **Password** - Enter the Password for the User ID.
- **Account ID** - Enter an Account ID.
- **Billing ID** - Enter a User ID for Charge Print.
- **Password** - Enter the Password for the Billing ID.

Prompt User for Settings - Select this feature to display the [Enter User Details] dialog-box each time you start printing. The user is then required to enter authentication information such as their User ID.

- **Display Previous User Details** - Check the box to store the user details entered in the [Enter User Details] dialog-box, and display the details in the box as a default next time.
- **Hide User_ID (***)** - Check the box to specify whether a user ID is to be displayed or hidden when it is entered.
- **Hide Account ID (***)** - Check the box to specify whether an account ID is to be displayed or hidden when it is entered.

High Speed Printing - Set this feature to make improvements in print speed, when using an application that generates PostScript directly.

Get Information from Printer - Clicking [Get Information from Printer] when the machine is used as a network printer verifies the printer option installation state using the print port to which the printer is connected, and reflects this in the Hardware Options setting.

Enable Bi-Directional Communication - Launches the bi-directional communication tool. This allows you to check the status of the printer and jobs from a PC.

Bi-Directional Communication Setup

The printer status can be monitored using the Bi-Directional Communication Window, displayed by selecting the [Printer Status] button on the [Paper/Output] tab. Once communication is established, the setting does not need to be changed.

NOTE: The Bi-Directional Communication function is supported on the Windows 2000, Windows XP, and Windows Server 2003 operating systems.

NOTE: For more information on using the PostScript driver, refer to Operation with Windows 2000, Windows XP and Windows Server 2003 in the PostScript User Guide.

NOTE: If any of the following events occur, the Bi-Directional Communication function is automatically disabled, and will need to be setup again.

- If the device configuration (for example, Memory Capacity) is changed,
- If [Get Information from Printer] is selected, and acquiring device information fails,
- If [Enable Bi-Directional Communication] checkbox is selected, and acquiring device information fails.

To setup the Bi-Directional Communication function:

1. Select [Properties] for the printer driver.
2. Open the [Configuration] tab.
3. Select the [Enable Bi-Directional Communication] checkbox.

The printer driver automatically detects the printer on the connected port.

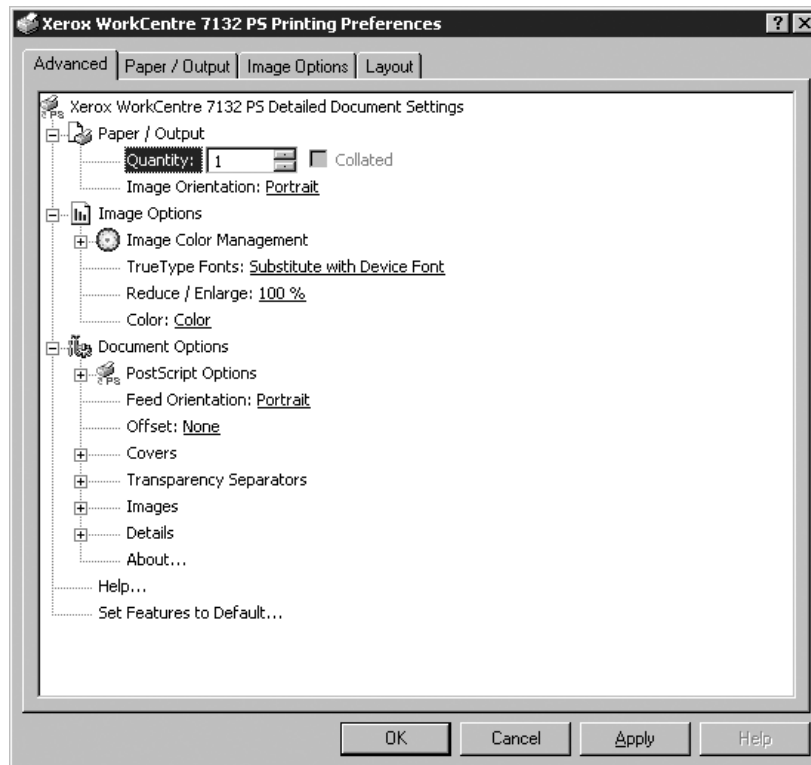
Printer Cannot be Detected

If the printer cannot be detected on the connected port, the [Search Printer] screen is displayed. You can select one of the following methods to search for the printer or specify a printer address.

- Broadcast – Click this button and then click [Search Details] to specify either a TCP/IP or IPX broadcast address type. Select [Next] to search for the printer, and then click [Finish].
- Specify Address – Click this button, and click [Next]. Specify the TCP/IP or IPX address on the [Specify Address] screen, and then click [Finish].

Advanced Tab Settings

This section describes the settings in the Advanced tab. Select the items in the Advanced tab and change the settings in the Change Setting box at the bottom of the tab.



Settings

Quantity - Specifies the number of output copies.

Collated - Specifies that the output copies be collated for output.

Image Orientation - Specifies the image orientation, portrait or landscape, for stapling mixed sized originals.

Image Color Management - Specifies the image color handling.

ICM Method - Specifies the color graphics printing method.

ICM Intent - Specifies the color image creation method to achieve an optimized printing result.

TrueType Fonts - Specifies the font handling for documents containing TrueType fonts.

Substitute with Device Font - Substitute TrueType fonts with fonts resident on the machine.

Download as Softfont - Download the font to the machine as a softfont.

Reduce/Enlarge - Specifies the reduction/enlargement ratio as a percentage between 25 and 400%.

Color - Specifies image reproduction in full color or black and white.

PostScript Output Format - Specifies the default PostScript file output format for when saving to a file.

Optimize for Speed - For faster printer processing.

Optimize for Portability - Reduce portability errors.

Encapsulate PostScript - Outputs to an encapsulated PostScript file.

Archive Format - Outputs to an archive format file.

TrueType Font Download Method - Specifies the font handling for documents containing TrueType fonts when saving to a file.

Automatic - Automatic font handling.

Outline - Include as vector outlines.

Bitmap - Include as bitmap images.

Native TrueType - Include TrueType fonts in their native format.

PostScript Language Level - Specifies the PostScript language level for compatibility with other devices (1, 2, or 3) when saving to a file.

Print PostScript Error Message - Specifies whether to report PostScript errors when saving to a file.

Mirror Image - Specifies whether to create mirror images for left-hand and right-hand pages when saving to a file.

Feed Orientation - Specifies the paper orientation when printing from the bypass tray. When feeding the short edge of the paper first, select [Landscape]. When feeding the long edge of the paper, select [Portrait].

Offset - The position of individual jobs or sets of copies are shifted to either side of the output tray to enable easy separation.

Front Cover - Specifies the paper tray that the front cover stock is to be fed from.

Back Cover - Specifies the paper tray that the back cover stock is to be fed from.

Transparency Separators - Specifies the separators to be inserted between transparencies.

Feed Separators from - Specifies the paper tray that transparency separators are to be fed from. When [Auto] is selected, the tray set on the machine is used as the feed destination.

Print on Separators - Specifies whether to print on the transparency separators as well as the transparency.

Paper Type (Separators) - Specifies a paper type for the transparency divider.

Image Enhancement - Specifies whether to use the Image Enhancement function. Selecting [On] smoothes out boundaries when printing. This reduces jagged edges by artificially increasing the resolution of the image. When printing a bitmapped image composed of coarse halftone dots, smooth color gradation is impossible in certain situations. In this case, select [Off].

Gray Guaranteed - Specifies printing non-raster image areas in black toner only.

Image Rotation (180deg) - Set the checkbox to rotate the prints by 180°. Default is [Off].

Skip Blank Pages - Specifies whether to skip blank pages when printing documents that contain blank pages.

Draft Mode - Specifies whether to reduce the amount of toner used when printing drafts. When [On] is selected, the overall printed color becomes lighter. This is best for printing documents when high print quality is not necessary.

Banner Sheet - Specifies whether to add a banner sheet to the printed output.

When [Use Printer Settings] is selected, the printer settings are used.

When [Printer Start Page] is selected, outputs the banner sheet using the start-sheet.

E-mail Job Confirmation - Specifies whether to use the Mail Notify feature to notify the end of the print job via e-mail. Default is [Off].

E-Mail Address - Specifies the e-mail address for the Mail Notify feature.

Substitute Tray - Specifies what action to take when the paper for the print size is not loaded in the machine.

Use Printer Settings - Use the printer settings. The settings can be confirmed on the control panel.

Display Message - Display paper supply messages on the control panel. Printing is impossible until paper is supplied.

Use Closest Size (Adjust to Fit) - Selects the closest paper size and automatically adjusts the image size as necessary.

Use Closest Size (No Zoom) - Selects the closest paper size and prints the same size as the image.

Use Larger Size (Adjust to Fit) - Selects paper larger than the original and automatically adjusts the image size as necessary.

Use Larger Size (No Zoom) - Selects paper larger than the original and prints the same size as the image.

Select Tray 5 (Bypass) - Feeds from bypass tray.

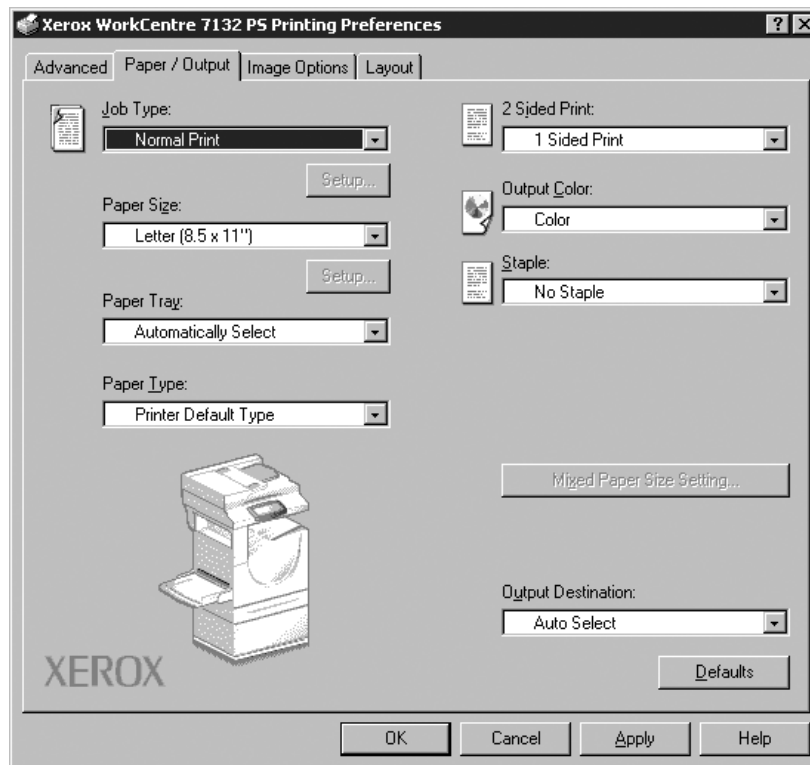
Custom Paper Auto Orientation - Specifies whether to correct the orientation of the custom paper.

Print Mixed Sized Originals - Specifies whether you are printing mixed sized originals for 2 Sided Print.

EMF Spooling - Specifies the spool format of the print data on the hard disk. This option is available when [Enable advanced printing features] is selected on the print driver's [Advanced] tab on the [Properties] screen.

Paper/Output Tab Settings

This section describes the Paper/Output tab.



NOTE: You can restore defaults by clicking [Defaults].

Job Type

You can specify the print function for Secure Print, Sample Set, and Delayed Print.

Secure Set temporarily stores print jobs in the printer, and then prints them when print instructions are received from the control panel.

Sample Set outputs only one copy when multiple copies are specified. If there is no problem, the remaining sets can be printed.

Delayed Print temporarily stores print jobs in the printer, and then prints them at the scheduled time.

To use Secure Print, Sample Set, or Delayed Print feature, input the User ID and password for Job Type. The password entered appears as asterisks(*).

Normal Print - Select when you do not want to output secure prints, a sample set, or delayed prints.

Secure Print - Select when you want to output secure prints.

Sample Set - Select when you want to output a sample set.

Delayed Print - Select when you want to output delayed prints.

See the On-line Help for details on the operation of the printer.

User ID - Displays the User ID for Job Type. The user ID displayed is the User ID specified on the Configuration tab. This option can only be selected when the setting on the Configuration tab has been completed. This is a display-only item and cannot be changed here.

Password - Displays the password for Secure Print as specified in the Configuration tab. Each digit entered appears as an asterisk (*). This option can only be selected when the setting on the Configuration tab has been completed. This is a display-only item and cannot be changed here.

Retrieve Document Name - Select the method for specifying the document name. If you have selected Auto Retrieve, the valid document name can be up to 24 alphanumeric characters.

Document Name - When "Enter Document Name" is selected in the Retrieve Document Name list, a document name up to 24 alphanumeric characters can be specified.

Start Print Time - Specifies the time that a Delayed Print job will be printed. Place the cursor in the hour or minute box and press the up or down triangle to specify the start time. You can also set the time by entering the time directly into the boxes. The default setting is 00:00.

Settings

Paper Size - Specifies the paper size for printing.

Paper Tray - Specifies the paper tray for printing.

Paper Type - Specifies the paper type for printing.

2 Sided Print - Specifies whether to print on both sides of the paper. This option requires the optional Duplex unit.

Output Color - Specifies printing in full color mode or black and white mode.

Staple - Specifies the stapling location and number of staples. This option requires the optional finisher unit.

Mixed Paper Size Setting - Displays the paper size of the mixed pages.

Output Destination - Specifies the output tray.

Status

The printer status can be monitored using the Bi-Directional Communication Window, displayed by selecting the [Printer Status] button on the [Paper/Output] tab. For details on the Bi-Directional Communication functions, refer to the PostScript driver online Help.


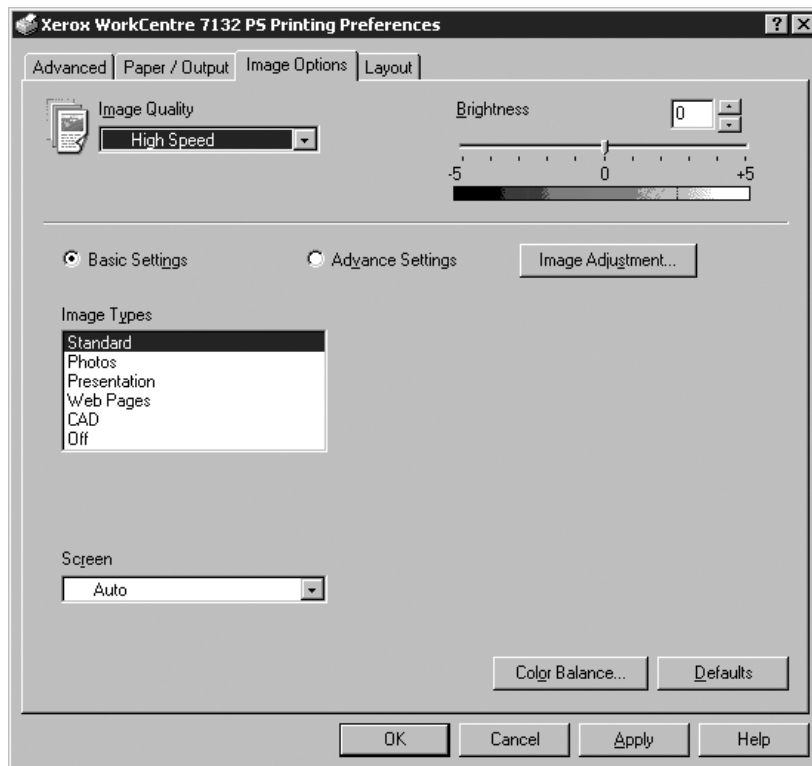
When the Bi-Directional Communication function is setup, the  icon is displayed beside the image of the machine on the [Paper/Output] tab. For instructions on how to setup Bi-Directional Communication, refer to *Bi-Directional Communication Setup on page 41*.

Image Options Tab Settings

This section describes the Image Options tab.



NOTE: You can restore defaults by clicking [Defaults].

Settings

Image Quality - Specifies the printing output priority.

High Speed - Speed is given priority over image quality.

Standard - Printing occurs with full image quality.

Brightness - Adjusts the level of brightness applied to the printed images.

Basic Settings

Image Type - Specifies the color adjustment printing mode optimized for the input type.

Standard - Printing is optimized for business documents containing text and graphs.

Photos - Printing is optimized for high-gradation images to best reproduce photos.

Presentation - Printing is optimized for presentation materials to produce vivid colors.

Web Pages - Printing is optimized for low-resolution images such as web pages and screen displays.

CAD - Printing is optimized for reproducing fine lines and fine text.

Off - Printing occurs with no color adjustment.

Screen - Specifies the printer engine screening mode.

Color Balance - Displays a screen that allows you to adjust the intensity of the color in highlights, midtones, and shadows.

Advanced Settings/Image Adjustment

RGB Color Correction - Specifies the RGB color correction method.

RGB Gamma Correction - Specifies the color adjustment input source gamma value.

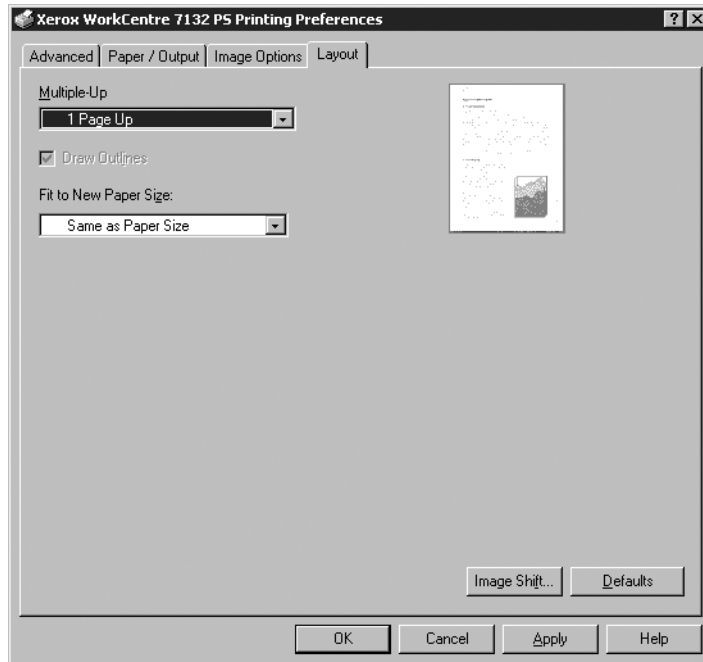
Enter RGB Profile - Specifies the display or working color space for accurate reproduction of RGB color.

RGB Color Temperature - Specifies the RGB color temperature.

CMYK Color Correction - Specifies the color correction target ink type for CMYK.

Layout Tab Settings

This section describes the settings in the Layout tab.



NOTE: You can restore defaults by clicking [Defaults].

Settings

Multiple-Up - Prints multiple consecutive pages of a document on a single sheet of paper.


Draw Outlines - Draws a border around each page image printed on a single sheet of paper using the Multiple-Up feature.

Fit to New Paper Size - Specifies the paper size on which to print the image.

Image Shift - Specifies the image shift position for a binding margin. Specify the edge position and the extent of the image shift on [Side 1] of the paper. You can also specify a margin for [Side 2] for 2 sided printing along the same edge of the paper.

How to Use Help

The following describes how to use Help.

1. Click  and a ? mark appears next to the pointer. You can then click items for which you need explanations, opening a pop-up window that contains relevant information. Click inside the pop-up window to close it.
2. Click [Help], an explanation of the current tab appears as Help information.

5 Operation on Macintosh Computers

- About the Software
 - Bundled Software
 - Hardware/Software Requirements
- Installing the Adobe PostScript Printer Driver
 - Installation Procedure (Mac OS 9.x or earlier)
 - Setting the Printer Driver (Mac OS 9.x or earlier)
 - Installation Procedure (Mac OS X)
 - Adding a Printer (Mac OS X)
- Installable Options
- Printer Specific Options Settings
- Installing the Screen Fonts

About the Software

This section describes the Macintosh software that is included on the PostScript Driver Library CD-ROM.

NOTE: When using AppleTalk protocol to print from Macintosh, set the EtherTalk port to Enable on the control panel.

Bundled Software

Insert the CD-ROM and double-click the WorkCentre-PS icon to display the window. The following items are contained in the folder:

Adobe PostScript Printer Driver (ver. 8.7.0, and 8.8) and PPD files - Adobe PostScript driver and PPD files (for Macintosh).

PPD Installer - The PPD file installer for Mac OS X 10.2.

Xerox Installer - The plug-in driver and PPD file installer for Mac OS X 10.3.

ColorSync - ColorSync ICC profiles.

Adobe Screen Fonts - Contains 117 PostScript fonts and 19 TrueType fonts, which are standard for PostScript 3 printers. In addition, 37 PostScript fonts for the Central European (CE) character set are included.

ATM (Adobe Type Manager) (ver. 4.5.2) - Helps you to install typefaces and activate and manage your fonts.

Adobe Acrobat Reader - Allows you to view and print PDF files on all major computing platforms.

Hardware/Software Requirements

The minimum system requirements for the Macintosh printer driver and the utility are described below.

Computer System

- Macintosh
- Power Macintosh

Basic Software

- **Adobe PostScript 8.7** - Mac OS 8.5 and 8.5.1
- **Adobe PostScript 8.8** - Mac OS 8.6 through 9.2.2
- **PPD Installer** - Mac OS X 10.2
- **Xerox Installer** - Mac OS X 10.3

NOTE: When using Mac OS X, launch the Classic environment to run the applications.

Installing the Adobe PostScript Printer Driver

This section describes how to install the Adobe printer driver and how to set the printer driver for this machine. There are two steps to install the printer driver. Firstly, use the installer enclosed on the CD-ROM to install the printer to the Macintosh. Then, configure the printer driver according to the printer used.

Installation Procedure (Mac OS 9.x or earlier)

This section describes the procedures for installing the Adobe PostScript printer driver. As an example, here is the procedure to install Adobe PostScript 8.8.

1. Insert the PostScript Driver Library CD-ROM in the CD-ROM drive.
The WorkCentre-PS icon appears on the desktop.
2. Double-click [WorkCentre-PS].
3. Double-click the [PrinterDriver] folder for your printer model, and then the "Adobe PostScript 880" folder.
4. Double-click [Adobe PostScript Installer 8.8].
5. When the Installer opens, click [Continue].
6. Read through the license agreement carefully and if you have no objections to it, click [Accept].

7. Confirm the Install Location for the [AdobePS Components] folder and change it if necessary, then click [Install].

Installation begins.

8. When the dialog box showing installation has completed appears, click [Restart] or [Quit].

This completes the installation.

Proceed to *Setting the Printer Driver (Mac OS 9.x or earlier)* on page 53 to continue.

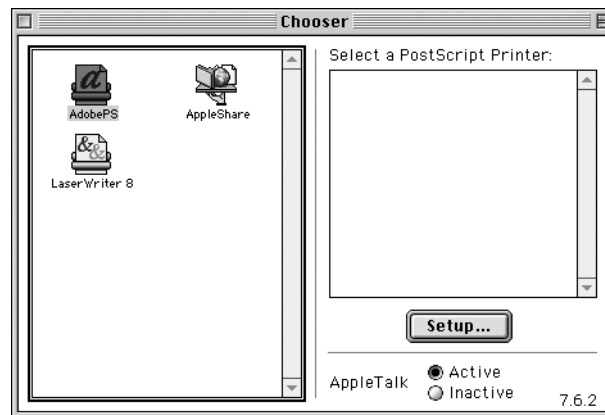
Setting the Printer Driver (Mac OS 9.x or earlier)

When you finish installing the Adobe PostScript printer driver, set the PostScript Printer Description (PPD) file for this machine to the printer driver.

The printer driver controls the functions of this machine based on the information in the PPD file.

1. Make sure that the machine is on.
2. Check that the machine's EtherTalk port is set to Enable.
You can check the EtherTalk settings in the System Settings List. See User Guide for details about how to print the System Settings List.
3. On the Apple menu select [Chooser], then click [Adobe PS].
4. Select your printer from the Select a PostScript Printer list box, which appears to the right of the Chooser, then click [Setup].

NOTE: You must be connected to the printer for its name to appear in the list box.

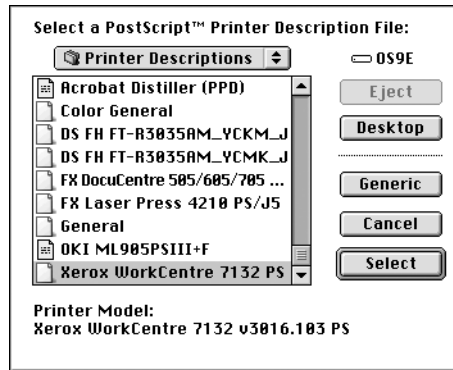


This automatically searches for the printer and sets the PPD file.

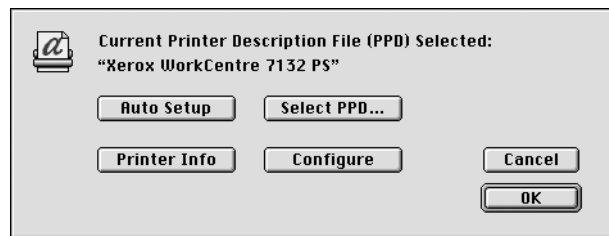
If the search for the PPD file is not automatically performed:

- (1) Click [Select PPD].

(2) Select your printer model in the list, then click [Select].



The PPD file for this machine is set.

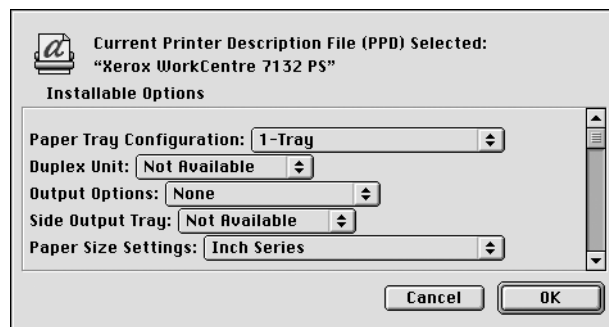


5. Click [Configure] to set the installable options.

See *Installable Options on page 57* for details about the options.

NOTE: You can change the print settings after you install the printer driver.

NOTE: To use the options, it is necessary to set Configure. Always set this according to the configuration of your machine.



6. Click [OK]. Click [OK] once more in the screen displayed.

7. Close the Chooser.

Installation Procedure (Mac OS X)

This section describes how to install the PostScript Printer Description (PPD) file for the Macintosh operating system, Mac OS X v10.3.x.

NOTE: A printer driver does not need to be installed on Mac OS X. It uses the Adobe PostScript driver that is provided with the operating system.

1. Insert the PostScript Driver Library CD-ROM in the CD-ROM drive.
The WorkCentre-PS icon appears on the desktop.
2. Double-click [WorkCentre-PS].
The WorkCentre-PS window opens.
3. Open the [Mac OS X] folder.
The Mac OS X window opens.
4. Double-click [Xerox Installer].
The installer starts and the Authenticate window opens.
5. Enter the Administrator's user name and password, then click [OK].
The Xerox Installer screen opens.
6. Click [Install] to start the installation.
7. Read through the license agreement carefully and if you have no objections to it, click [Accept].
8. Confirm the Install Location and change it if necessary, then click [Install].
9. When the dialog box showing installation has completed appears, click [Quit].
This completes the installation.
Proceed to *Adding a Printer (Mac OS X)* on page 55.

Adding a Printer (Mac OS X)

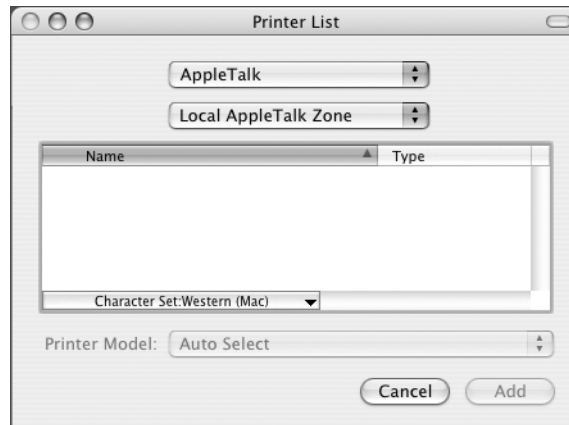
After the PPD file has been installed, set the PPD file for the printer driver, and then add the printer. The printer driver controls the printer functions based on the information in the PPD file.

1. Make sure that the machine is on.
 2. Check that the machine's port is set to Enable.
 - When using AppleTalk, set the EtherTalk port to Enable.
 - When using IP Printing, set the LPD port to Enable.You can check the EtherTalk and LPD settings in the System Settings List. See the User Guide for details about how to print the "System Settings List."
 3. Start [Printer Setup Utility].
- NOTE:** You can find Printer Setup Utility in the Utilities folder in the Applications folder.

4. When the Printer List screen opens, click [Add].
5. Select the protocol used to connect the printer.

When using AppleTalk®

1. Select [AppleTalk] from the menu, and specify the zone for the printer being used.

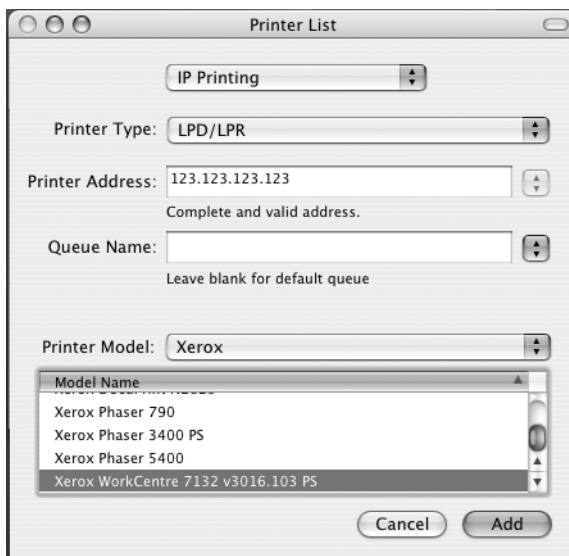


2. Select the printer you are using from the list.
3. Select [Auto Select] from Printer Model.
4. Click [Add].

When using IP Printing

You can select the printer by setting IP address as well as by using Bonjour or Rendezvous. When directly setting IP address, follow the steps below.

1. Select [IP Printing] from the menu, and enter the IP address for the printer being used in Printer's Address.



2. Enter the IP address or DNS name for the printer in the Printer Address field.

3. Select [Xerox] from Printer Model, and select the machine in the [Model Name] list.
4. Click [Add].

This completes the addition of a printer.

When automatically setting the printer by using Bonjour or Rendezvous, follow the steps below.

1. Select [Bonjour] or [Rendezvous] from the menu.
2. Select the printer you are using from the list.
3. According to the screen, select required items that automatically set the printer.

Installable Options

This section describes the installable options settings corresponding to the hardware configuration of the printer.

For Mac OS 9.x and earlier

This section describes the installable options for operating systems Mac OS 9.x and earlier.

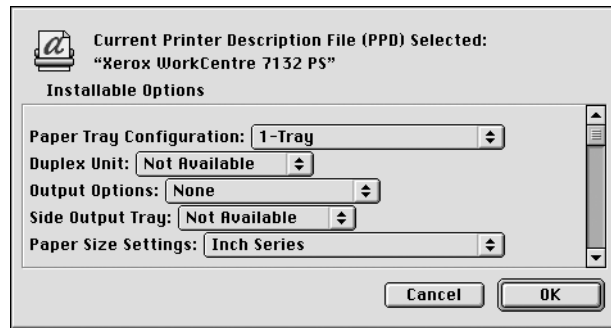
NOTE: Usually, Installable Options are automatically set according to the bidirectional communications of this machine. You do not have to change the settings.

1. Select the printer using the Chooser and click [Setup].
The Current Printer Description File (PPD) Selected dialog box appears.
2. Click [Configure].



The Installable Options list appears.

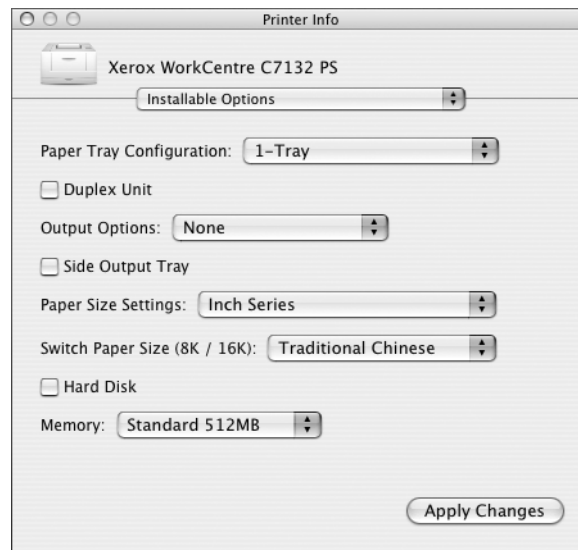
3. Set the option menu items in Installable Options, and click [OK].



For Mac OS X

This section describes the installable options for Mac OS X.

1. Click [Printers] on the Printer Setup Utility menu bar, and select [Show Info].
2. Select [Installable Options], and select the options that have been installed on the printer.



Settings

Paper Tray Configuration - Specifies the paper tray type installed on the machine. When [1-Tray] is selected, Tray 1 is available (standard configuration).

When [3-Tray] is selected, Tray 2 and Tray 3 are installed.

When [3-Tray (High Capacity)] is selected, the two-tray module Tray 2 and Tray 3 is installed.

Duplex Unit - Specifies whether the duplex unit is installed.

Output Options - Specifies whether the inner output tray or finisher output unit is installed.

Side Output Tray - Specifies whether the side output tray is installed.

Paper Size Settings - Specifies the paper size group for different areas to enable the selection of paper size common to that location.

Switch Paper Size (8K/16K) - Indicate your language preference to enable the set of 8K and 16K paper size that is best suited to your needs.

Hard Disk - Specifies whether the Hard Disk (optional) is installed. If it is, set to [Available].

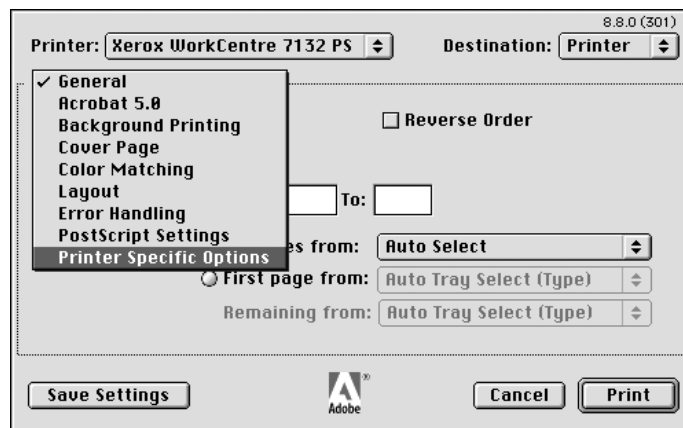
Memory - Specifies the amount of printer memory.

Printer Specific Driver Settings

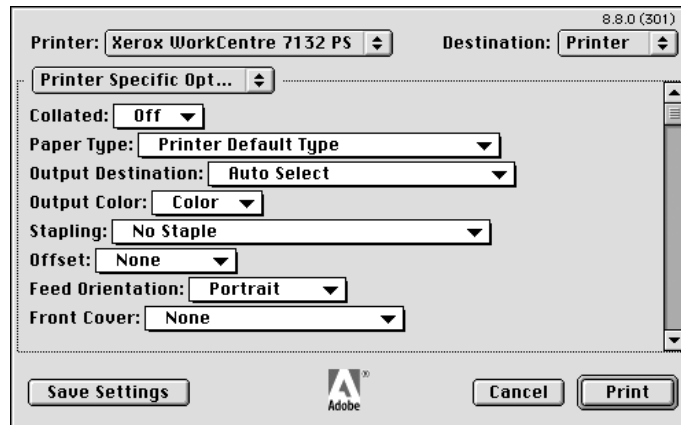
This section describes the settings that relate specifically to the printer. The settings available vary depending on which hardware options have been installed. See *Installable Options on page 57*.

For Mac OS 9.x and earlier

1. On the File menu of the application, click [Print].
The Print dialog box appears.
2. Select [Printer Specific Options].



3. Specify the functions that you want to set.



Settings

Collated - Specifies whether to collate a multiple-page file when a job is printed.

Paper Type - Specifies the paper type for printing.

Output Destination - Specifies the output tray.

Output Color - Specifies printing in full color mode or black and white mode.

Stapling - Specifies the stapling location and number of staples. This option requires the optional finisher unit.

Offset - The position of individual jobs or sets of copies are shifted to either side of the output tray to enable easy separation.

Feed Orientation - Specifies the paper orientation when printing from the bypass tray. When feeding the short edge of the paper first, select [Landscape]. When feeding the long edge of the paper, select [Portrait].

Front Cover - Specifies the paper tray that the front cover stock is to be fed from.

Back Cover - Specifies the paper tray that the back cover stock is to be fed from.

Print on Separators - Specifies whether to print on the transparency separators as well as the transparency.

Feed Separators from - Specifies the paper tray that transparency separators are to be fed from. When [Auto] is selected, the tray set on the machine is used as the feed destination.

Paper Type (Separators) - Specifies a paper type for the transparency divider.

Print Mixed Sized Originals - Specifies whether you are printing mixed sized originals for 2 Sided Print.

Image Enhancement - Specifies whether to use the Image Enhancement function. Selecting [On] smoothes out boundaries when printing. This reduces jagged edges by artificially increasing the resolution of the image. When printing a bitmapped image composed of coarse halftone dots, smooth color gradation is impossible in certain situations. In this case, select [Off].

Gray Guaranteed - Specifies printing non-raster image areas in black toner only.

Draft Mode - Specifies whether to reduce the amount of toner used when printing drafts. When [On] is selected, the overall printed color becomes lighter. This is best for printing documents when high print quality is not necessary.

Substitute Tray - Specifies what action to take when the paper for the print size is not loaded in the machine.

Use Printer Settings - Use the printer settings. The settings can be confirmed on the control panel.

Display Message - Display paper supply messages on the control panel. Printing is impossible until paper is supplied.

Use Closest Size (Adjust to Fit) - Selects the closest paper size and automatically adjusts the image size as necessary.

Use Closest Size (No Zoom) - Selects the closest paper size and prints the same size as the image.

Use Larger Size (Adjust to Fit) - Selects paper larger than the original and automatically adjusts the image size as necessary.

Use Larger Size (No Zoom) - Selects paper larger than the original and prints the same size as the image.

Select Tray 5 (Bypass) - Feeds from bypass tray.

Skip Blank Pages - Specifies whether to skip blank pages when printing documents containing blank pages.

Custom Paper Auto Orientation - Specifies whether to correct the orientation of the custom paper.

Image Quality - Specifies the printing output priority.

High Speed - Speed is given priority over image quality.

Standard - Printing occurs with full image quality.

Brightness - Adjusts the level of brightness applied to the printed images.

Image Type - Specifies the color adjustment printing mode optimized for the input type.

Standard - Printing is optimized for business documents containing text and graphs.

Photos - Printing is optimized for high-gradation images to best reproduce photos.

Presentation - Printing is optimized for presentation materials to produce vivid colors.

Web Pages - Printing is optimized for low-resolution images such as web pages and screen displays.

CAD - Printing is optimized for reproducing fine lines and fine text.

Off - Printing occurs with no color adjustment.

Screen - Specifies the printer engine screening mode.

RGB Color Correction - Specifies the RGB color correction method.

Enter RGB Profile - Specifies the display or working color space for accurate reproduction of RGB color.

RGB Gamma Correction - Specifies the color adjustment input source gamma value.

RGB Color Temperature - Specifies the RGB color temperature.

CMYK Color Correction - Specifies the color correction target ink type for CMYK.

For Mac OS X

Job Type Settings

The screenshot shows a 'Job Type' settings dialog box. At the top, 'Printer:' is set to 'Xerox WorkCentre C7132 PS' and 'Presets:' is set to 'Standard'. Below these is a 'Job Type' dropdown menu. The 'Job Type' section is expanded, showing a 'Job Type:' dropdown set to 'Normal Print', 'User ID:' and 'Password:' text input fields, 'Retrieve Document Name:' dropdown set to 'Auto Retrieve', 'Document Name:' text input field, and 'Start Print Time:' dropdown set to '12:00 AM'. At the bottom of the dialog are buttons for 'Defaults', 'Help', 'Preview', 'Save As PDF...', 'Fax...', 'Cancel', and 'Print'. The version number 'ver.1.2.1.7' is displayed in the bottom right corner.

You can specify the print function for Secure Print, Sample Set, and Delayed Print.

Secure Print temporarily stores print jobs in the printer, and then prints them when print instructions are received from the control panel.

Sample Set outputs only one copy when multiple copies are specified. If there is no problem, the remaining sets can be printed.

Delayed Print temporarily stores print jobs in the printer, and then prints them at the scheduled time.

To use the Secure Print, Sample Set, or Delayed Print feature, input the User ID and password for Job Type. The password entered appears as dots.

NOTE: Secure Print, Sample Set, and Delayed Print are supported on Mac OS 10.3 only.

Normal Print - Select when you do not want to output secure prints, a sample set, or delayed prints.

Secure Print - Select when you want to output secure prints.

Sample Set - Select when you want to output a sample set.

NOTE: The Collated setting must be selected in the Page Setup tab when using Print Type.

Delayed Print - Select when you want to output delayed prints.

See the On-line Help for details on the operation of the printer.

User ID - Displays the User ID for the Job Type. The user ID displayed is the User ID specified on the Configuration tab. This option can only be selected when the setting on the Configuration tab has been completed. This is a display-only item and cannot be changed here.

Password - Displays the password for Secure Print as specified in the Configuration tab. Each digit entered appears as an dot. This option can only be selected when the setting on the Configuration tab has been completed. This is a display-only item and cannot be changed here.

Retrieve Document Name - Select the method for specifying the document name. If you have selected Auto Retrieve, the valid document name can be up to 24 alphanumeric characters.

Document Name - When “Enter Document Name” is selected in the Retrieve Document Name list, a document name up to 24 alphanumeric characters can be specified.

Start Print Time - Specifies the time that a Delayed Print job will be printed. Place the cursor in the hour or minute box and press the up or down triangle to specify the start time. You can also set the time by entering the time directly into the boxes. The default setting is 00:00.

Job Accounting Settings



NOTE: These functions are supported on Mac OS 10.3 only.

Account Mode - Specifies if all users or only System Administrators can change the authentication related settings.

Detailed User Settings - Sets the authentication information.

Use Default User Settings - The values set in this feature are used as the authentication parameters.

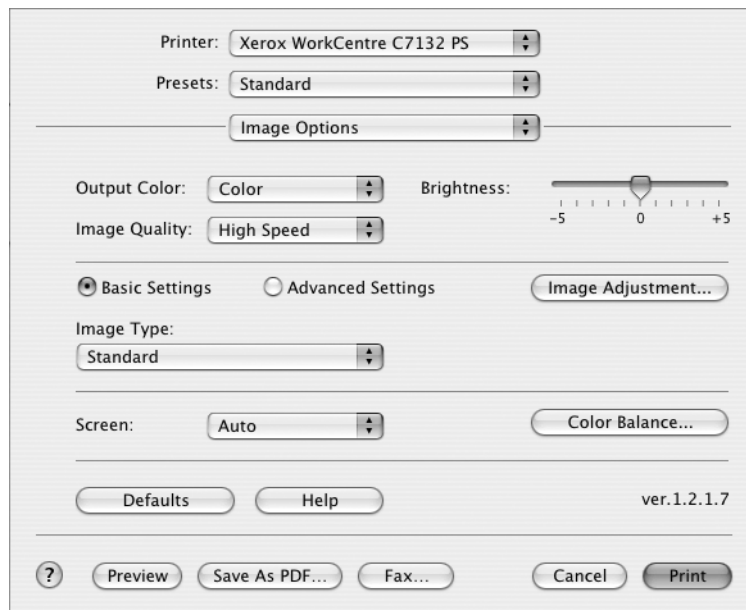
- **Specify User ID** - Select how to specify the User ID.
- **User ID** - Enter a User ID.

- **Password** - Enter the Password for the User ID.
- **Account ID** - Enter an Account ID.
- **Billing ID** - Enter a User ID for Charge Print.
- **Password** - Enter the Password for the Billing ID.

Prompt User for Settings - Select this feature to display the [Enter User Details] dialog-box each time you start printing. The user is then required to enter authentication information such as their User ID.

- **Display Previous User Details** - Check the box to store the user details entered in the [Enter User Details] dialog-box. These details will be displayed as the default entry the next time the window opens.
- **Hide User_ID** - Check the box to specify whether a user ID is to be displayed or hidden when it is entered.
- **Hide Account ID** - Check the box to specify whether an account ID is to be displayed or hidden when it is entered.

Image Options Settings



NOTE: These functions are supported on Mac OS 10.3 only.

Output Color - Specifies printing in full color mode or black and white mode.

Image Quality - Specifies the printing output priority.

High Speed - Speed is given priority over image quality.

Standard - Printing occurs with full image quality.

Brightness - Adjusts the level of brightness applied to the printed images.

Screen - Specifies the printer engine screening mode.

Color Balance - Displays a screen that allows you to adjust the intensity of the color in highlights, midtones, and shadows.

Basic Settings

Image Type - Specifies the color adjustment printing mode optimized for the input type.

Standard - Printing is optimized for business documents containing text and graphs.

Photos - Printing is optimized for high-gradation images to best reproduce photos.

Presentation - Printing is optimized for presentation materials to produce vivid colors.

Web Pages - Printing is optimized for low-resolution images such as web pages and screen displays.

CAD - Printing is optimized for reproducing fine lines and fine text.

Off - Printing occurs with no color adjustment.

Advanced Settings/Image Adjustment

RGB Color Correction - Specifies the RGB color correction method.

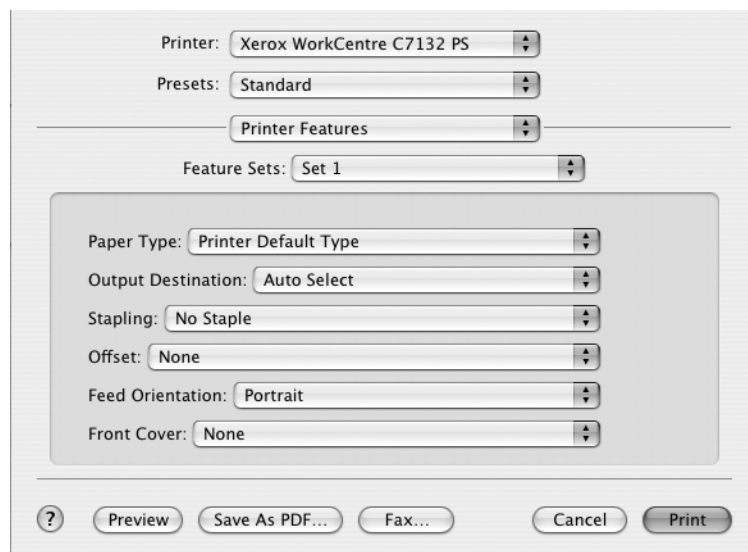
RGB Gamma Correction - Specifies the color adjustment input source gamma value.

Enter RGB Profile - Specifies the display or working color space for accurate reproduction of RGB color.

RGB Color Temperature - Specifies the RGB color temperature.

CMYK Color Correction - Specifies the color correction target ink type for CMYK.

Printer Features Settings



Paper Type - Specifies the paper type for printing.

Output Destination - Specifies the output tray.

Stapling - Specifies the stapling location and number of staples. This option requires the optional finisher unit.

Offset - The position of individual jobs or sets of copies are shifted to either side of the output tray to enable easy separation.

Feed Orientation - Specifies the paper orientation when printing from the bypass tray. When feeding the short edge of the paper first, select [Landscape]. When feeding the long edge of the paper, select [Portrait].

Front Cover - Specifies the paper tray that the front cover stock is to be fed from.

Back Cover - Specifies the paper tray that the back cover stock is to be fed from.

Print Mixed Sized Originals - Specifies whether you are printing mixed sized originals for 2 Sided Print.

Image Enhancement - Specifies whether to use the Image Enhancement function. Selecting [On] smoothes out boundaries when printing. This reduces jagged edges by artificially increasing the resolution of the image. When printing a bitmapped image composed of coarse halftone dots, smooth color gradation is impossible in certain situations. In this case, select [Off].

Gray Guaranteed - Specifies printing non-raster image areas in black toner only.

Draft Mode - Specifies whether to reduce the amount of toner used when printing drafts. When [On] is selected, the overall printed color becomes lighter. This is best for printing documents when high print quality is not necessary.

Substitute Tray - Specifies what action to take when the paper for the print size is not loaded in the machine.

Use Printer Settings - Use the printer settings. The settings can be confirmed on the control panel.

Display Message - Display paper supply messages on the control panel. Printing is impossible until paper is supplied.

Use Closest Size (Adjust to Fit) - Selects the closest paper size and automatically adjusts the image size as necessary.

Use Closest Size (No Zoom) - Selects the closest paper size and prints the same size as the image.

Use Larger Size (Adjust to Fit) - Selects paper larger than the original and automatically adjusts the image size as necessary.

Use Larger Size (No Zoom) - Selects paper larger than the original and prints the same size as the image.

Select Tray 5 (Bypass) - Feeds from bypass tray.

Skip Blank Pages - Specifies whether to skip blank pages when printing documents containing blank pages.

Custom Paper Auto Orientation - Specifies whether to correct the orientation of the custom paper.

Transparency Separators - Specifies the separators to be inserted between transparencies.

Feed Separators from - Specifies the paper tray that transparency separators are to be fed from. When [Auto] is selected, the tray set on the machine is used as the feed destination.

Print on Separators - Specifies whether to print on the transparency separators as well as the transparency.

Paper Type (Separators) - Specifies a paper type for the transparency divider.

Installing the Screen Fonts

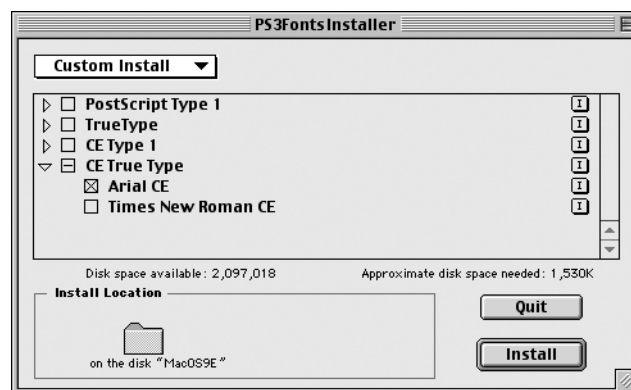
This section explains how to install the fonts in the Screen Font folder.

It is recommended that all other applications are closed before installing the fonts. Otherwise, a warning message appears between steps 5 and 6.

1. Start Macintosh and insert the PostScript Driver Library CD-ROM into the CD-ROM drive.
2. Double-click the [WorkCentre-PS] icon followed by the Screen Font folder and then the [PS3 Fonts Installer].
3. When the Installer window appears, click [Continue].
The license agreement dialog appears.
4. Read through the agreement carefully and if you have no objections to it, click [Accept].
The PS3FontsInstaller dialog box appears.
5. You may select [Easy Install] or [Custom Install].

Easy Install - installs all the fonts provided in the Screen Font folder.

Custom Install - installs the selected fonts only. Simply click on the disclosure triangle beside the four categories of fonts to display the fonts in each category and then check the fonts to be installed. For example, the diagram below shows that Arial CE of the CE TrueType fonts is selected.



A warning message will appear if you did not quit all other applications before performing the font installation.

6. Click [Install].

The installation of the fonts begins.

After the installation, you have to restart your Macintosh before the fonts can be used.

Store your CD-ROM in a safe place.

6 Appendix

Cautions and Limitations

Troubleshooting

See the User Guide for error codes and error messages displayed on the control panel.
See the User Guide for how to deal with paper jams.

Print operation

The printer driver allows you to make selections to print on custom paper and postcards using duplex and/or the stapling feature to the Finisher Tray. However, these features cannot be used when printing on custom paper or postcards.

You can feed custom paper from the bypass tray only. However, when you select custom paper, the Paper Source selection does not change to Manual Feed automatically. Please select Manual Feed yourself.

7 Index

A

Adobe Acrobat Reader	
Macintosh	52
Windows 2000, XP, Server 2003	35
Adobe PostScript Printer Driver	
Macintosh	51
Windows 95, 98, ME	9
Windows NT 4.0	21
Adobe Type Manager	
Macintosh	51
Windows 95, 98, ME	9
Windows NT 4.0	21
Advanced Tab	
Windows 2000, XP, Server 2003	42
Windows NT 4.0	27

B

Bi-Directional Communication	
printer status	41, 47
setup	41

C

Color Settings Tab	
Windows 95, 98, ME	15
Configuration Tab	
Windows 2000, XP, Server 2003	40
Windows 95, 98, ME	12
Windows NT 4.0	25

D

Device Settings Tab	
Windows 2000, XP, Server 2003	39
Windows NT 4.0	24

E

error codes	69
error messages	69

I

Image Options Settings, Mac OS X	64
Image Options Tab	
Windows 2000, XP, Server 2003	47
Windows NT 4.0	32

J

Job Accounting Settings, Mac OS X	63
Job Type Settings, Mac OS X	62

L

Layout Tab	
Windows 2000, XP, Server 2003	49
Windows NT 4.0	33

M

Macintosh	51
Adobe Acrobat Reader	52
Adobe PostScript Printer Driver	51
Adobe Type Manager	51
Image Options Settings	64
Installable Options, Mac OS 9.x and earlier	57
Installable Options, Mac OS X	58
Job Accounting Settings	63
Job Type Settings	62
PPD	51
PPD Installer	51
Printer Features Settings	65
Printer Settings, Mac OS 9.x and earlier	59
Printer Settings, Mac OS X	62
Printer Specific Options Settings	59
Screen Fonts	51, 67
Xerox Installer	51
Microsoft PostScript 5.2 Driver	
Windows 2000, XP, Server 2003	35

O

Options Tab	
Windows 95, 98, ME	14
Output Settings Tab	
Windows 95, 98, ME	17

P

Paper/Output Tab	
Windows 2000, XP, Server 2003	45
Windows NT 4.0	30
PostScript Driver Library	7
PostScript Program ROM	7
PPD	
Macintosh	51
Windows 2000, XP, Server 2003	35
Windows 95, 98, ME	9

Windows NT 4.021

PPD Installer

 Macintosh51

Printer Features Settings, Mac OS X65

Printer Settings

 Mac OS 9.x and earlier59

 Mac OS X62

printer status 41, 47

S

Screen Fonts

 Macintosh51

W

Watermarks Tab

 Windows 95, 98, ME16

Windows 200035

Windows 2000, XP, Server 2003

 Adobe Acrobat Reader35

 Advanced Tab42

 Configuration Tab40

 Device Settings Tab39

 Image Options Tab47

 Layout Tab49

 Microsoft PostScript 5.2 Driver35

 Paper/Output Tab45

 PPD35

Windows 9510

Windows 95, 98, ME

 Adobe PostScript Printer Driver9

 Adobe Type Manager9

 Color Settings Tab15

 Configuration Tab12

 Options Tab14

 Output Settings Tab17

 PPD9

 Watermarks Tab16

Windows 9810

Windows Me10

Windows NT 4.021

 Adobe PostScript Printer Driver21

 Adobe Type Manager21

 Advanced Tab27

 Configuration Tab25

 Device Settings Tab24

 Image Options Tab32

 Layout Tab33

 Paper/Output Tab30

 PPD21

Windows Server 200335

Windows XP35

X

Xerox Installer

 Macintosh51