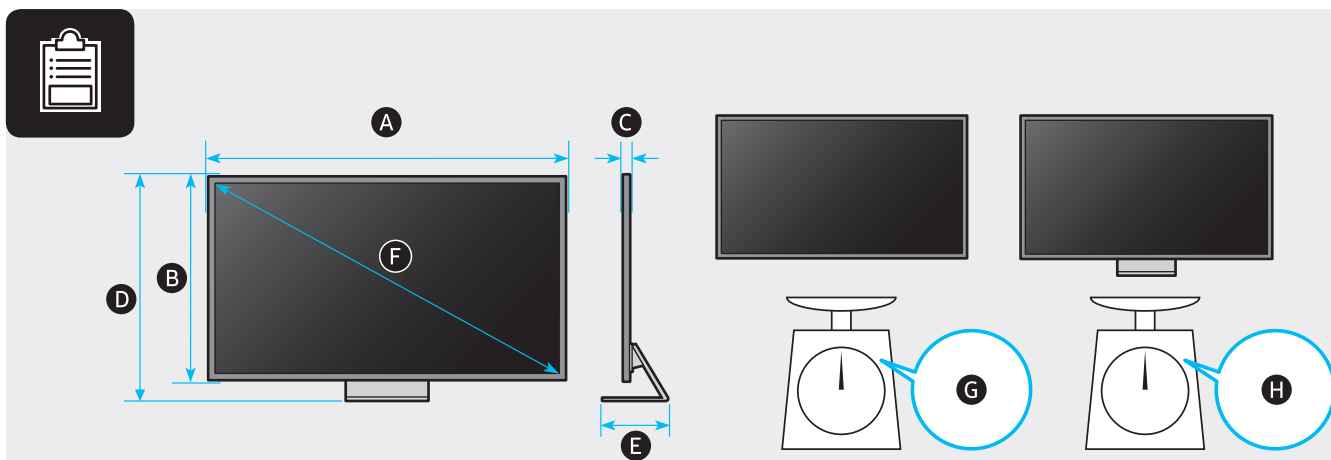
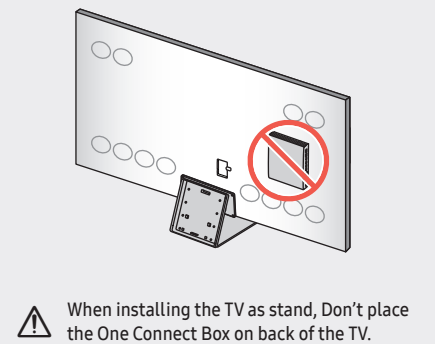
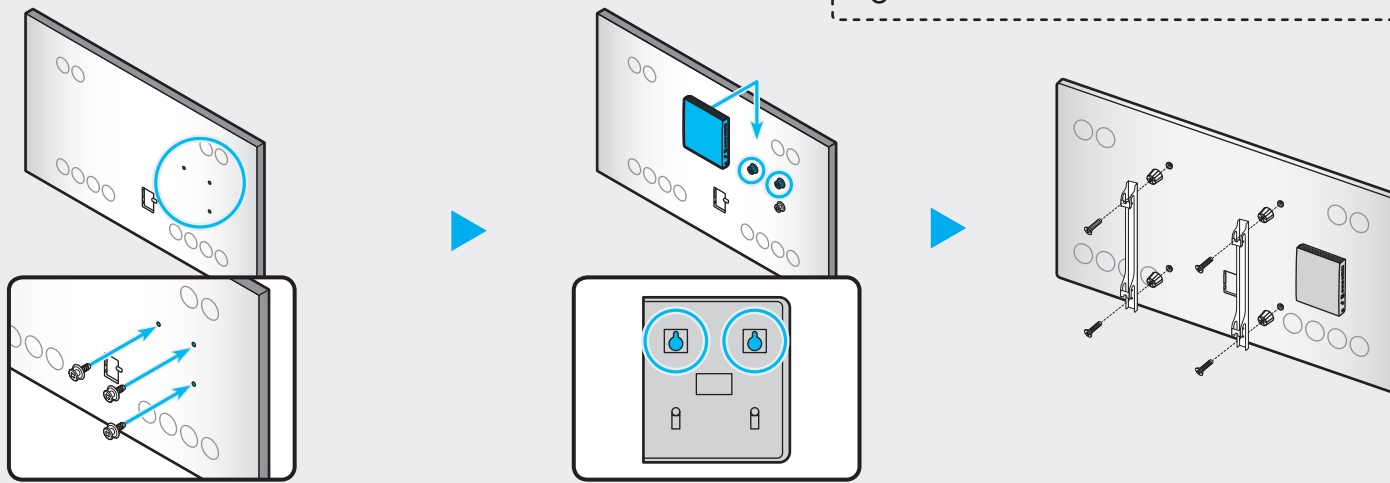
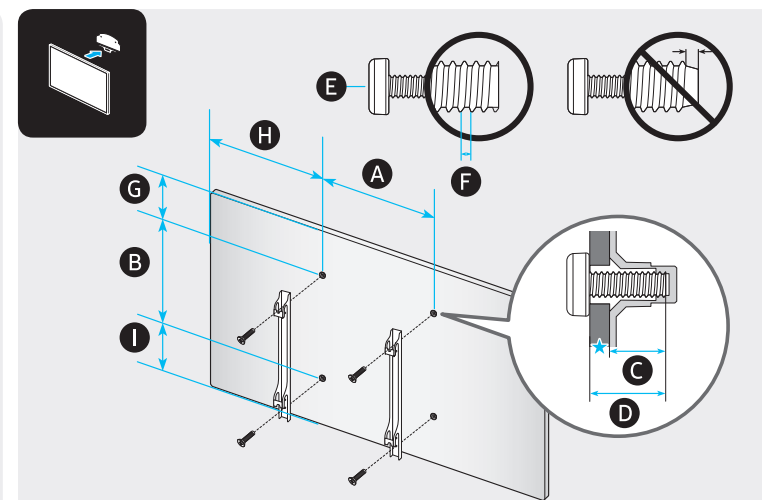


\* When installing the TV as wallmount, You can place the One Connect Box as shown below.  
 \* To install using a wall mount, be sure to use the supplied HOLDER-WALL RING.



	A	B	C	D	E	F	G	H
QN98QN100B	85.7 inches (2176.3 mm)	49.0 inches (1244.3 mm)	0.8 inches (19.9 mm)	51.7 inches (1313.5 mm)	14.3 inches (363.3 mm)	97.5 inches	151.2 lbs (68.6 kg)	184.3 lbs (83.6 kg)



	VESA A x B (mm)	C (mm)	D	E x 4	F (mm)	G (inches)	H (inches)	I (inches)
QN98QN100B	600 x 400	5-6	C + ★	M8	1.25	12.4	31.0	20.6

SAMSUNG

# Quick Setup Guide (Unpacking and Installation Guide)



◀ Scan this QR code with your smart phone to see helpful videos.

