

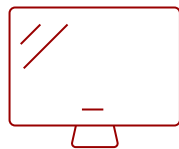
98" 4K 16:9 ANDROID EDLA VIEWBOARD INTERACTIVE DISPLAY WITH INTEGRATED MICROPHONE AND USB-C | IFP9841

Key Features

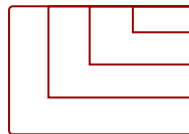
- Engaging Lessons with ViewSonic® Education Software
- Immersive Audio for Maximum Engagement
- One-cable USB-C Simplicity
- Responsive Writing Experience
- Instantaneous Collaboration with Write-Away Technology
- Robust Security and Centralized Management
- Native Access to the Google Education Ecosystem
- Eco-Friendly & Energy Efficient



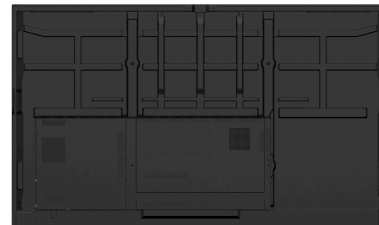
98
DISPLAY



PANEL



RESOLUTION



Product Description

The ViewSonic® ViewBoard® IFP9841 interactive display delivers the right balance of features, performance, and value for today's classrooms and meeting spaces. This 98-inch touchscreen is designed to feel premium and intuitive, making it easy for educators and teams to get up and running with minimal setup. Powered by the latest Android™ platform with EDLA certification, it provides secure, built-in access to Google Workspace, Microsoft 365, and familiar apps. Everything works right away, so users can focus on sharing ideas instead of troubleshooting technology.

One-cable USB-C simplifies connectivity, while powerful built-in audio ensures everyone can hear and be heard. Energy-efficient features help reduce power consumption over time, making the IFP9841 a smart, future-ready choice that's easy to deploy, easy to use, and easy on budgets.

Specifications

	More Information
UPC	766907038965
OS	ViewBoard OS EDLA
CPU	Rockchip RK3576
Memory	8GB LPDDR
Storage	128GB eMMC
Microphone	Beamforming array x 8, full duplex echo cancellation
Internal Speakers	Soundbar design 55W (20W x 2 + 15W x 1)
HDMI 2.1 In	3
HDMI Out	1
VGA	1
DisplayPort	1
SPDIF	1
USB Type A	5
USB Type B	3
USB Type C	100W x 1, 15W x 1
RS232	1
Ethernet LAN (RJ45)	2
Intel® OPS Slot In (80-pin)	1
Line In	1
Voltage	100-240 VAC
Stand-by	<0.5W
Physical Controls	7 (Power, Home, Input source, Touch, Freeze, Volume+, Volume-)
Temperature	32-104° F (0 - 40° C)
Non-Operating Temperature	-4°F to 140°F (-20C to 60C)
Humidity (non-condensing)	20-80%
Touch Technology	IR Recognition
Touch Points	64 points
Tip Detection	Dual tips: 3mm and 10mm / Finger: 12-15mm / Palm: 30mm
Other	Palm Rejection
Latency	≤5ms
Net (lbs)	182.32
Gross (lbs)	243.61
Net (kg)	82.7

Gross (kg)	110.5
Packaging (in.)	94.33x58.27x10.63
Physical (in.)	87.37x51.89x3.54
Packaging (mm)	2396x1480x270
Physical (mm)	2219.3x1318.1x89.9
VESA Compatible	800 x 600 mm
Warranty	3-year limited warranty on parts, labor and backlight, onsite warranty
Recycle/Disposal	Please dispose of in accordance with local, state or federal laws.
Package Contents	IFP9841, Power Cord (3m), USB-C Cable (1.8m) Remote control with AAA battery, USB Touch Cable (3m), Stylus x 2 (a set), Quick Start Guide + Compliance statement, RS232 adapter, Clamp x 5, Camera Plate, Screw x 4, HDMI cable 3m, VB-WIFI-004 WiFi Adapter
Regulations	CTUVus, FCC, Energy 8.0, EPEAT, CEC
Ethernet LAN	2 (10/100/1000 Mbps BaseT for Android and OPS)
Wifi	VB-WIFI-004 adapter, 802.11AX + Bluetooth 5.0
Bluetooth	Bluetooth 5.0
Screen Size	98
Light Source	DLED
Display Resolution	3840 x 2160
Refresh Rate	60Hz
Aspect Ratio	16:9
Static Contrast Ratio	5,000:1
Dynamic Contrast Ratio	5,000:1
Backlight Life (Hours)	50,000
Brightness	350 cd/m2
Response Time (Typical GTG)	8ms
Viewing Angles	178° horizontal, 178° vertical
Panel Surface	Anti-glare, 9H Pencil hardness / 3.2mm thickness

UPC: 766907038965



Contact Sales
ViewSonic.com

888.881.8781
 email:
salesinfo@viewsonic.com