



advidia

A54 OD Dome Camera

Quick Start Guide



Thank you for purchasing our product. If there are any questions, or requests, please do not hesitate to contact the dealer.

About This Document

This manual applies to the following models.

Model
A54 OD

This manual may contain several technical incorrect places or printing errors, and the content is subject to change without notice. The updates will be added to the new version of this manual. We will readily improve or update the products or procedures described in the manual.

DISCLAIMER STATEMENT

“Underwriters Laboratories Inc. (“UL”) has not tested the performance or reliability of the security or signaling aspects of this product. UL has only tested for fire, shock or casualty hazards as outlined in UL’s Standard(s) for Safety, UL60950-1. UL Certification does not cover the performance or reliability of the security or signaling aspects of this product. UL MAKES NO REPRESENTATIONS, WARRANTIES OR CERTIFICATIONS WHATSOEVER REGARDING THE PERFORMANCE OR RELIABILITY OF ANY SECURITY OR SIGNALING RELATED FUNCTIONS OF THIS PRODUCT.

0502001040703

Regulatory Information

FCC Information

FCC compliance: This equipment has been tested and found to comply with the limits for a digital device, pursuant to part 15 of the FCC Rules. These limits are designed to provide reasonable protection against harmful interference when the equipment is operated in a commercial environment. This equipment generates, uses, and can radiate radio frequency energy and, if not installed and used in accordance with the instruction manual, may cause harmful interference to radio communications. Operation of this equipment in a residential area is likely to cause harmful interference in which case the user will be required to correct the interference at his own expense.

FCC Conditions

This device complies with part 15 of the FCC Rules. Operation is subject to the following two conditions:

1. This device may not cause harmful interference.
2. This device must accept any interference received, including interference that may cause undesired operation.

EU Conformity Statement



This product and - if applicable - the supplied accessories too are marked with "CE" and comply therefore with the applicable harmonized European standards listed under the Low Voltage Directive 2006/95/EC, the EMC Directive 2004/108/EC, the RoHS Directive 2011/65/EU.



2012/19/EU (WEEE directive): Products marked with this symbol cannot be disposed of as unsorted

municipal waste in the European Union. For proper recycling, return this product to your local supplier upon the purchase of equivalent new equipment, or dispose of it at designated collection points. For more information see: www.recyclethis.info.



2006/66/EC (battery directive): This product contains a battery that cannot be disposed of as unsorted municipal waste in the European Union. See the product documentation for specific battery information. The battery is marked with this symbol,

which may include lettering to indicate cadmium (Cd), lead (Pb), or mercury (Hg). For proper recycling, return the battery to your supplier or to a designated collection point. For more information see: www.recyclethis.info



Safety Instruction

These instructions are intended to ensure that user can use the product correctly to avoid danger or property loss.

The precaution measure is divided into “Warnings” and “Cautions”

Warnings: Serious injury or death may occur if any of the warnings are neglected.

Cautions: Injury or equipment damage may occur if any of the cautions are neglected.

	
<p>Warnings Follow these safeguards to prevent serious injury or death.</p>	<p>Cautions Follow these precautions to prevent potential injury or material damage.</p>



Warnings

- In the use of the product, you must be in strict compliance with the electrical safety regulations of the nation and region. Please refer to technical specifications for detailed information.
- Input voltage should meet both the SELV (Safety Extra Low Voltage) and the Limited Power Source with 24 VAC or 12 VDC according to the IEC60950-1 standard. Please refer to technical specifications for detailed information.

- Do not connect several devices to one power adapter as adapter overload may cause over-heating or a fire hazard.
- Please make sure that the plug is firmly connected to the power socket. When the product is mounted on wall or ceiling, the device shall be firmly fixed.
- If smoke, odor or noise rise from the device, turn off the power at once and unplug the power cable, and then please contact the service center.



Cautions

- Make sure the power supply voltage is correct before using the camera.
- Do not drop the camera or subject it to physical shock.
- Do not touch sensor modules with fingers. If cleaning is necessary, use clean cloth with a bit of ethanol and wipe it gently. If the camera will not be used for an extended period, please replace the lens cap to protect the sensor from dirt.
- Do not aim the camera at the sun or extra bright places. Blooming or smearing may occur otherwise (which is not a malfunction), and affect the endurance of sensor at the same time.
- The sensor may be burned out by a laser beam, so when any laser equipment is in using, make sure that the surface of sensor will not be exposed to the laser beam.
- Do not place the camera in extremely hot, cold (the operating temperature shall be -30°C ~ +60°C, or -40°C ~ 60°C if the camera

model has an “H” in its suffix), dusty or damp locations, and do not expose it to high electromagnetic radiation.

- To avoid heat accumulation, good ventilation is required for operating environment.
- Keep the camera away from liquid while in use.
- While in delivery, the camera shall be packed in its original packing, or packing of the same texture.
- Regular part replacement: a few parts (e.g. electrolytic capacitor) of the equipment shall be replaced regularly according to their average enduring time. The average time varies because of differences between operating environment and using history, so regular checking is recommended for all the users. Please contact with your dealer for more details.
- Improper use or replacement of the battery may result in hazard of explosion. Replace with the same or equivalent type only. Dispose of used batteries according to the instructions provided by the battery manufacturer.
- If the product does not work properly, please contact your dealer or the nearest service center. Never attempt to disassemble the camera yourself. (We shall not assume any responsibility for problems caused by unauthorized repair or maintenance.)

Table of Contents

1 Appearance Description	8
2 Installation	10
2.1 Ceiling Mounting.....	11
2.2 Wall Mounting	15
2.3 3-axis Adjustment and Lens Adjustment	17
2.3.1 3-axis Adjustment.....	17
2.3.2 Lens Adjustment.....	18
3 Setting the Network Camera over the LAN	20
4 Accessing via Web Browser	25

1 Appearance Description

The overview of the network dome camera is shown below.

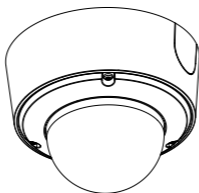


Figure 1-1 Overview

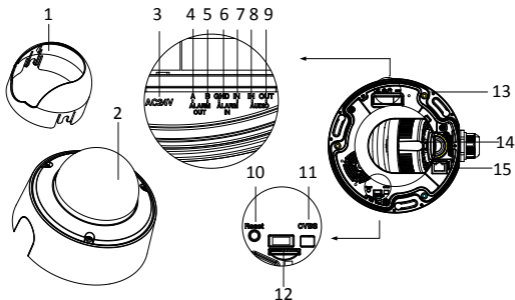


Figure 1-2 Detailed Components

Table 1-1 Description

No.	Description	No.	Description
1	Black Liner	9	Audio Out
2	Bubble	10	Reset Button
3	Power Interface	11	CVBS Interface
4	Alarm Output A	12	SD Card Slot
5	Alarm Output B	13	Mounting Base
6	Grounding	14	Lens
7	Alarm Input	15	Network Interface
8	Audio In		

- Press RESET about 10s when the camera is powering on or rebooting to restore the default settings, including the user name, password, IP address, port No., etc.
- This series of camera supports 12V DC, 24V AC, and PoE power supply. Please make sure your power supply meets the demands.

2 Installation

Before you start:

- Make sure the device in the package is in good condition and all the assembly parts are included.
- Make sure all the related equipment is power-off during the installation.
- Check the specification of the products for the installation environment.
- Make sure the power supply is matched with your required voltage to avoid damage.
- If the product does not function properly, please contact your dealer or the nearest service center. Do not disassemble the camera for repair or maintenance by yourself.
- Make sure that the wall is strong enough to withstand three times the weight of the camera.

For the camera that supports IR, you are required to pay attention to the following precautions to prevent IR reflection:

- Dust or grease on the dome cover will cause IR reflection. Please do not remove the dome cover film until the installation is finished. If there is dust or grease on the dome cover, clean the dome cover with clean soft cloth and isopropyl alcohol.
- Make sure that there is no reflective surface too close to the camera lens. The IR light from the camera may reflect back into the lens causing reflection.

- The foam ring around the lens must be seated flush against the inner surface of the bubble to isolate the lens from the IR LEDs. Fasten the dome cover to camera body so that the foam ring and the dome cover are attached seamlessly.

2.1 Ceiling Mounting

Steps:

1. Drill the screw holes and the cable hole in the ceiling according to the supplied drill template.

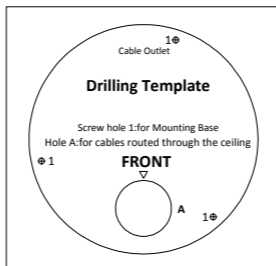


Figure 2-1 Drill Template

2. Hammer the supplied screws to the ceiling.

Do not install the screws into the ceiling completely. It is recommended you install only enough of a screw into the ceiling, so as to hook the camera to the screws.

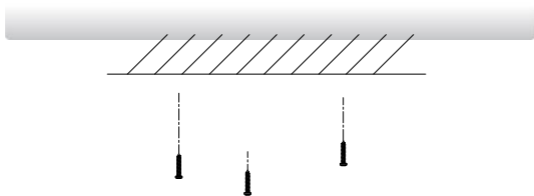


Figure 2-2 Installation of the Screws

3. Use a hexagonal screwdriver to loosen the lock screw on the bubble, and remove the black liner.
4. Route the cables from the cable hole, and connect the corresponding cables.

You can select to route the cables from the side outlet instead of the cable hole in the ceiling. See Figure below.

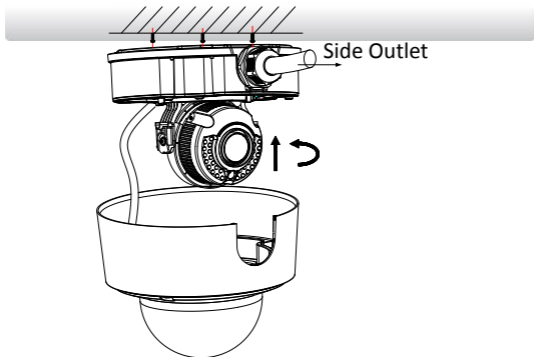


Figure 2-3 Route the Cables via Side Outlet

5. Align the screws holes on the camera to the inserted screw, and rotate the camera to hook the camera to the screws.
6. Tighten the screws.
7. Install the black liner and bubble back.

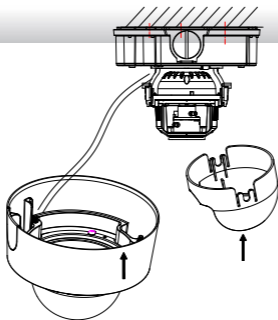


Figure 2-4 Install the Black Liner and Bubble

8. Tighten the lock screw on the bubble.

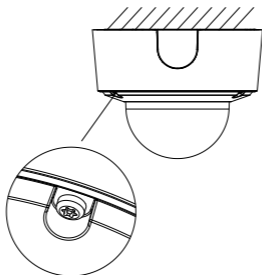


Figure 2-5 Tighten the Lock Screw

2.2 Wall Mounting

You need to purchase a wall bracket separately if wall mounting is selected.

1. Fix the wall bracket to the wall with the screws.

Please insert the expansion screws first if the camera is mounted to the cement wall, and you can use the self-tapping screws directly if camera is mounted to the wooden wall.

2. Install the bowl-shape cover to the wall bracket.

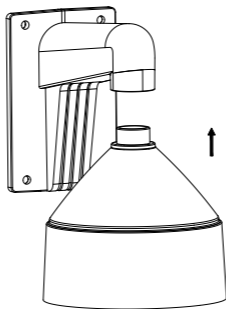


Figure 2-6 Install the Wall Bracket

3. Align the supplied rubber ring to the bowl-shape cover.
4. Insert the screws half-deep to the screws holes on the rubber ring.

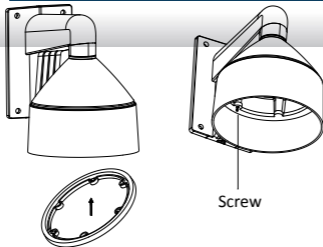


Figure 2-7 Install the Rubber Ring and Screws

5. Align the screws holes on the camera to the installed screws, and rotate the camera to hook to the camera to the screws.
6. Install the black liner and bubble.

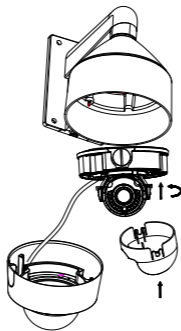


Figure 2-8 Install the Black Liner and Bubble

7. Tighten the lock screw on the bubble.

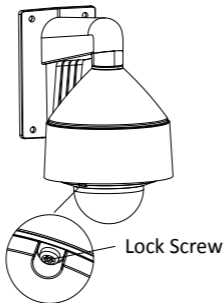


Figure 2-9 Tighten the Lock Screw

2.3 3-axis Adjustment and Lens Adjustment

2.3.1 3-axis Adjustment

This series of camera supports 3-axis adjustment, and you can adjust the camera to the desired surveillance angle after the black liner is installed.

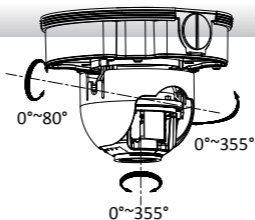


Figure 2-10 3-axis Adjustment

2.3.2 Lens Adjustment

The camera with letter “Z” in its model suffix support electronic lens. You can adjust the lens via the zoom button or focus button on the PTZ control interface after you login to a camera.

Please refer to the chapter 3 and chapter 4 for details to login to the camera.

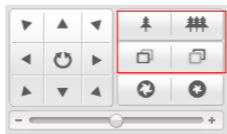


Figure 2-11 Zoom/Focus Adjustment Via PTZ Interface

And the camera without letter “Z” in its suffix asks you to adjust the lens after the black liner is installed.

Connect the camera to a debug monitor so as to get the live view, and adjust the zoom lever (T~W) to adjust the zoom, and adjust the focus lever (F~N) to adjust the focus till you get a clear view.

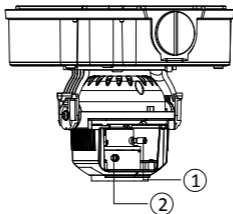


Figure 2-12 Lens Adjustment

3 Setting the Network Camera over the LAN

Purpose:

To view and configure the camera via LAN (Local Area Network), you need to connect the network camera in the same subnet with your PC. Then, install the Advidia Camera Finder Utility to search and change the IP of network camera.

The following figure shows the cable connection of network camera and PC:



Figure 3-1 Wiring over LAN

Set the IP address of the camera for accessing via LAN.

Steps:

To set the IP address, please use the Advidia Camera Finder Utility as described below:

- To view and configure the camera via LAN (Local Area Network), you need to connect the network camera in the same subnet with your PC. Then, install the Advidia Camera Finder Utility.

Refer to the following introductions to set IP address with the Advidia Camera Finder Utility software (for more detailed instructions please download the Camera Finder manual from the Advidia Website www.advidia.com/support):

- After launching the Advidia Camera Finder software, it automatically searches the online devices from the subnet where your computer is located. This search may take 30 seconds or more depending on network size. After searching it will show total number and information of the Advidia cameras found on the network. Device information including the device type, IP address, port number, gateway, etc. will be displayed.




Preview	ID	Model	Camera Date	Camera Time	MAC	IP Address	Port	IP Gateway	Channel	Compression	DHCP Enabled
	0	A-200	Unknown	Unknown	78:A1:83:41:10:05	10.10.0.164	80	10.10.1.254	1	Unknown	<input checked="" type="checkbox"/>
	1	A-44	09/15/2014	03:52:16	78:A1:83:00:8F:A1	10.10.3.235	0	192.168.2.1	1	H.264	<input type="checkbox"/>
	2	A-45	Unknown	Unknown	78:A1:83:01:FD:3F	10.10.1.159	0	10.10.1.254	1	Unknown	<input checked="" type="checkbox"/>
	3	A-54	09/15/2014	15:38:39	78:A1:83:41:01:07	10.10.0.174	80	10.10.1.254	1	H.264	<input type="checkbox"/>
	4	A-34W	Unknown	Unknown	78:A1:83:41:24:2C	10.10.0.53	80	10.10.1.254	1	Unknown	<input type="checkbox"/>
	5	A-14	09/15/2014	16:36:11	78:A1:83:02:7C:01	10.10.0.160	80	10.10.1.254	1	H.264	<input type="checkbox"/>
	6	A-34W	Unknown	Unknown	78:A1:83:41:23:A7	10.10.0.52	80	10.10.1.254	1	Unknown	<input checked="" type="checkbox"/>
	7	A-54	Unknown	Unknown	78:A1:83:41:00:44	10.10.0.50	80	10.10.1.254	1	Unknown	<input checked="" type="checkbox"/>
	8	A-15	09/15/2014	16:32:32	78:A1:83:02:8C:3C	10.10.0.156	80	10.10.1.254	1	H.264	<input type="checkbox"/>
	9	A-35	Unknown	Unknown	78:A1:83:40:F0:82	10.10.0.54	80	10.10.1.254	1	Unknown	<input type="checkbox"/>
	10	A-46	Unknown	Unknown	78:A1:83:01:FF:A9	169.254.123.219	80	192.168.1.1	1	Unknown	<input checked="" type="checkbox"/>
	11	A-35	09/15/2014	16:34:10	78:A1:83:40:F2:BC	10.10.0.168	80	10.10.1.254	1	H.264	<input type="checkbox"/>

Figure 3-2 Advidia Camera Finder

Note:

To perform a manual search for additional cameras:

Click the refresh icon  to refresh the online device list manually. The newly discovered devices will be added to the list.

Note:

You can click on each column heading to order the information.

□ Modify device information

Steps:


- 1). Select the device(s) to be modified in the device list as shown in Figure 3-3.
- 2). Click on “File” and select “Login Manager” as shown in Figure 3-4 to enter the username and password information of selected device(s).
- 3). Enter the username and password information of the admin account of each device you wish to modify in the “Username” and “Password” fields and click the **Save icon**  to save the changes.
- 4). Close the Login Manager and select “Launch Edit Table” under the “Edit” menu dropdown or with Ctrl+E as seen in figure 3-5.



Figure 3-3 Select a Device

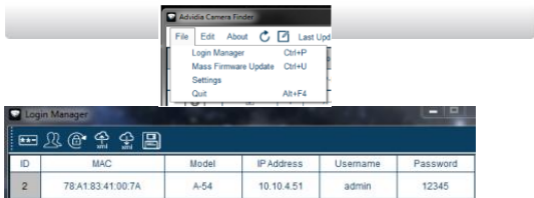


Figure 3-4 Login Manager

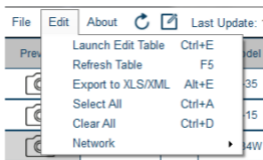


Figure 3-5 Launch Edit Table

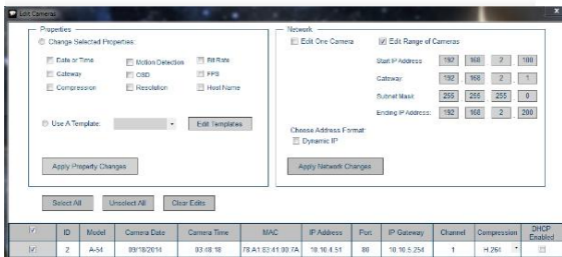


Figure 3-6 Edit Table

- Enter the desired IP address (or range if changing the IP address of more than one device) of the network camera in the address field of the edit table and click Apply Network Changes. You can also select “Dynamic IP” if you would prefer to have an IP address assigned by your network router.

The default value of the IP address is “192.0.0.64”. The default user name is “admin”, and password is “12345”. For security purposes the default Username and password should be changed to something unique.

For accessing the network camera from different subnets, please set the gateway for the network camera after you log in.

4 Accessing via Web Browser

System Requirement:

Operating System: Microsoft Windows XP SP1 and above version / Vista / Win7 / Server 2003 / Server 2008 32bits

CPU: Intel Pentium IV 3.0 GHz or higher

RAM: 1G or higher

Display: 1024×768 resolution or higher

Web Browser: Internet Explorer 6.0 and above version, Apple Safari 5.02 and above version, Mozilla Firefox 3.5 and above version and Google Chrome8 and above version

Steps:

- 1) Open the web browser.
- 2) In the browser address bar, input the IP address of the network camera, e.g., 192.0.0.64 and press the **Enter** key to enter the login interface.
- 3) Input the user name and password.
- 4) Click **Login**.



Figure 4-1 Login Interface

- 5) Install the plug-in before viewing the live video and managing the camera. Please follow the installation prompts to install the plug-in.

Note:

You may have to close the web browser to finish the installation of the plug-in.

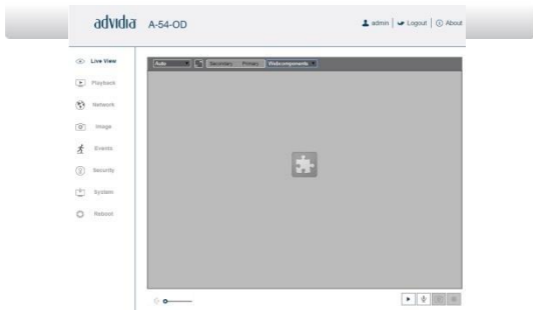


Figure 4-2 Download Plug-in

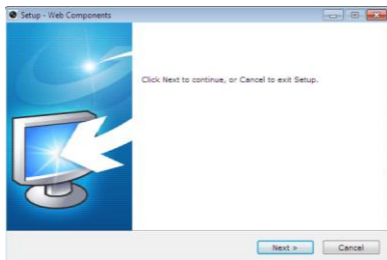


Figure 4-3 Install Plug-in

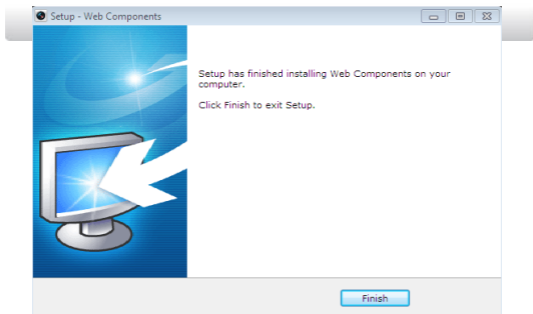


Figure 4-4 Install Plug-in

- 6) Reopen the web browser after the installation of the plug-in and repeat the above steps 2-4 to login.

Note:

For detailed instructions of further configuration, please refer to the camera's user man