



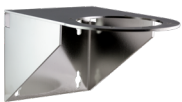
Explosion Proof Network

TNO-X6322EPT1-Z

2MP Network Explosion Proof Zoom Camera



Accessories (Optional)



HT-SD-WM
Wall Mount Bracket



HT-SPMA-SD
Pole Mount Bracket



HT-SD-FP
Protection Cable
(Supplied with camera unit)



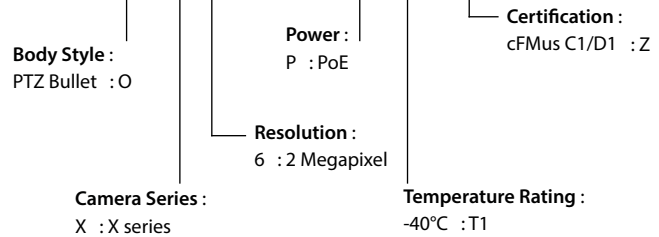
HT-SD-CM
Corner Mount Bracket

Key Features

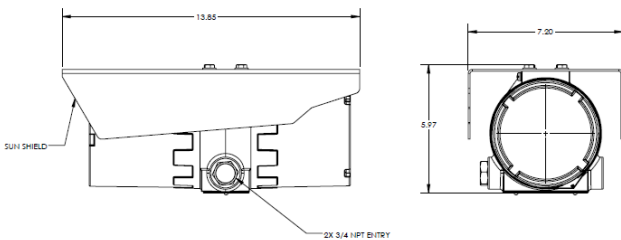
- 2MP (1920 x 1080) resolution
- 4.44 - 142.6mm lens (32x Optical Zoom)
- H.265, H.264, MJPEG codec support
- Multiple streaming, WiseStreamII support
- Day & Night (ICR), WDR (120dB)
- DIS with Built-in Gyro sensor
- SD Memory slots (Maximum 256GB)
- Hazardous Rated for Class I II III Division 1 Groups B, C, D, E, F, G cFMus Approved and II 2 G Ex db IIB+H2 II 2 D Ex tb IIIC IECEx ATEX certifie
- Powder-coated aluminum housing

Model Number

TNO-X6322EPT1-Z



Dimensions



TNO-X6322EPT1-Z

2MP Network Explosion Proof Zoom Camera

Specifications

VIDEO	
Imaging Device	1/2.8" 2MP CMOS
Total Pixels	1,981(H) x 1,288(V) 2.55MP
Effective Pixels	1,944(H) x 1,212(V) 2.35MP
Scanning System	Progressive Scan
Minimum Illumination	Color: 0.05Lux (1/30 sec, F1.6), B/W: 0.005Lux (1/30 sec, F1.6)
S/N Ratio	50dB
Video Out	CVBS: 1.0Vpp / 75Ω composite, 720 x 480, for installation, USB: Micro USB Type B, 1280x720 for installation
LENS	
Focus Control	Auto / Manual / One Shot AF
Lens Type	DC auto Iris, Board-in type
Focal Length / Angular FoV	4.4 ~ 142.6mm (Optical 32x), H: 61.8° (Wide) ~ 2.19° (Tele) / V: 36.2° (Wide) ~ 1.24° (Tele)
OPERATIONAL	
Camera Title	Off/On (Displayed up to 85 characters) - English / Numeric / International characters / Special characters - Common: Multi-line (Max. 5), Color (Grey / Green / Red / Blue / Black / White), Transparency, Auto scale by resolution
Day & Night	Auto (ICR) / Color / B/W / External / Schedule
Backlight Compensation	Off / BLC / HLC (Masking / Dimming), WDR
Wide Dynamic Range (WDR)	150dB
Contrast Enhancement	SSDR (Off/On)
Digital Noise Reduction	SSNRV (2D + 3D noise filter) (Off/On)
Digital Image Stabilization	Off/On (Built-in Gyro sensor)
Defog	Off / Auto (Input from fog detection) / Manual
Motion Detection	Off/On (8ea, 8point polygonal zones), Handover
Privacy Masking	Off/On (32ea, Polygonal) - Color: Grey / Green / Red / Blue / Black / White, Mosaic
Gain Control	Off / Low / Middle / High / Manual
White Balance	ATW / AWC / Manual / Indoor / Outdoor (Included mercury & sodium)
Contrast	Level adjustment
LDC (Lens Distortion Correction)	Off/On (5 levels with minimum / maximum)
Electronic Shutter Speed	Minimum / Maximum / Anti flicker (2 ~ 1/12,000sec)
Digital PTZ	24x, Digital PTZ (Preset, Group)
Flip / Mirror	Off/On, Hallway view: 90° / 270°
Video & Audio Analytics	Tampering, Loitering, Directional detection, Defocus detection, Fog detection, Virtual line, Enter / Exit, (Dis)Appear, Audio detection, Face detection, Motion detection, Digital auto tracking, Sound classification
Alarm I/O	Input 1ea / Output 1ea
Remote Control Interface	RS-485
RS-485 Protocol	Samsung-T/E, Pelco-P/D, Sungjin, Panasonic, Honeywell, AD, Vicon, GE, Bosch
Alarm Triggers	Alarm input, Motion detection, Video & Audio analytics, Network disconnect
Alarm Events	File upload via FTP and E-Mail, Notification via E-Mail, Local storage (SD/SDHC/SDXC) or NAS recording at alarm triggers, External output, DPTZ preset
Pixel Counter	Support

NETWORK	
Ethernet	RJ-45 (10/100 BASE-T)
Video Compression Format	H.265 / H.264 (MPEG-4 part 10/AVC): Main / Baseline / High, MJPEG
Resolution	1920 x 1080, 1280 x 1024, 1280 x 960, 1280 x 720, 1024 x 768, 800 x 600, 800 x 448, 720 x 576, 720 x 480, 640 x 480, 640 x 360, 320 x 240
Maximum Framerate	H.264 / H.265 : Max. 60fps at all resolutions, MJPEG : Max. 30fps
Smart Codec	Manual mode (Area-based: 5ea)
WiseStream II	Support
Video Quality Adjustment	H.265 / H.264 : Target bitrate level control, MJPEG : Target bitrate level control
Bitrate Control Method	H.265 / H.264 : CBR or VBR, MJPEG : VBR
Streaming Capability	Multiple Streaming (Up to 10 profiles)
Audio In	Selectable (Micophone in / Line in), Maximum output level: 1 Vrms Supply voltage: 2.5V DC (4mA), Input impedance: approx. 2K Ohm
Audio Out	Line out, Maximum output level: 1Vrms
Audio Compression Format	G.711 u-law/G.726 selectable, G.726 (ADPCM) 8KHz, G.711 8KHz G.726 : 16Kbps, 24Kbps, 32Kbps, 40Kbps, AAC-LC : 48Kbps at 8/16/32/48KHz
Audio Communication	Bi-directional (2-way)
IP	IPv4, IPv6
Protocol	TCP/IP, UDP/IP, RTP(UDP), RTP(TCP), RTCP, RTSP, NTP, HTTP, HTTPS, SSL/TLS, DHCP, PPPoE, FTP, SMTP, ICMP, IGMP, SNMPv1/v2c/v3(MIB-2), ARP, DNS, DDNS, QoS, PIM-SM, UPnP, Bonjour
Security	HTTPS (SSL) login authentication, Digest login authentication IP address filtering, User access log, 802.1X authentication (EAP-TLS, EAP-LEAP)
Streaming Method	Unicast / Multicast
Maximum User Access	20 users at unicast mode
Edge Storage	SD/SDHC/SDXC 2 slots (Up to 512GB) - Continuous recording (1st slot to 2nd slot) NAS (Network Attached Storage), Local PC for instant recording
Application Programming Interface	ONVIF Profile S/G, SUNAPI (HTTP API), Wisenet Open Platform
Webpage Language	English, Korean, Chinese, French, Italian, Spanish, German, Japanese, Russian, Swedish, Portuguese, Czech, Polish, Turkish, Dutch, Hungarian, Greek
Web Viewer	Supported OS : Windows 7, 8.1, 10, Mac OS X 10.10, 10.11, 10.12 Plugin-Free Webviewer - Supported Browser : Google Chrome 54, MS Edge 38, Mozilla Firefox (49Windows 64bit only), MS Internet Explorer 11, Apple Safari 9 *Mac OS X only
Central Management Software	Wisenet WAVE, SmartViewer, SSM
ENVIRONMENTAL	
Operating Temperature PoE only	-40°C ~ +60°C (-40°F ~ +140°F) USA, -50°C ~ +60°C (-58°F ~ +140°F) Canada
Operating Temperature PoE only	-10°C ~ +55°C (+14°F ~ +131°F)
Storage Temperature / Humidity	-50°C ~ +60°C (-58°F ~ +140°F) / Less than 90% RH
Ingress Protection	Type 4x / IP66
ELECTRICAL	
Input Voltage	Camera : PoE (IEEE802.3af) / Heater : 12-24V DC
Power Consumption	Camera : Maximum 7.5W (PoE) / Heater : 25W
MECHANICAL	
Color / Material	RAL2000-Yellow Orange / Powder-coated Aluminum
Dimensions (WxHxD)	7.2" x 5.97" x 13.85"
Weight	14lb (6.35kg)
CERTIFICATION	
Certified Model Number	F103-XNZ-L6320A-BD



MADE IN USA
CERT NO. FM18US0262X & FM18CA0126X
MODEL: F103-XNZ-L6320A-BD
INPUT: IEEE802.3af, Class3, 7.5 W;
HEATER: 12-24VDC/VAC, 25 W



FABRICADO NO EUA
CERT NO. NCC 20.0084 X
MODELO: F103-XNZ-L6320A-BD
ALIMENTAÇÃO: IEEE802.3af, Class3, 7.5 W;
AQUECEDORA: 12-24VDC/VAC, 25 W



US: Class I Division 1 Groups BCD T6 Ta = -40°C to +55°C, Type 4X, IP66
Class II/III Division 1 Groups EFG T6 Ta = -50°C to +55°C, Type 4X, IP66
Canada: Class I Division 1 Groups BCD T6 Ta = -50°C to +55°C, Type 4X, IP66
Class II/III Division 1 Groups EFG T6 Ta = -50°C to +55°C, Type 4X, IP66
Class I, Zone 1, AEx/Ex Ib IIC T85°C Db Ta = -50°C to +55°C, Type 4X, IP66
Zone 21, AEx/Ex Ib IIC T85°C Db Ta = -50°C to +55°C, Type 4X, IP66
II 2 G Ex db IIB+H2 T6 Ta = -50°C to +55°C, IP66
II 2 D Ex db IIC T85°C Db Ta = -50°C to +55°C, IP66
CERT NO. FM18ATEX0073X, IECEx FMG 18.0029X, & FM22UEX0016X



NCC 20.0084 X
Ex db IIB+H2 T6 Ta = -50°C to +55°C, IP66
Ex tb IIC T85°C Db Ta = -50°C to +55°C, IP66