

VP2786-4K

Display

Quick Start Guide

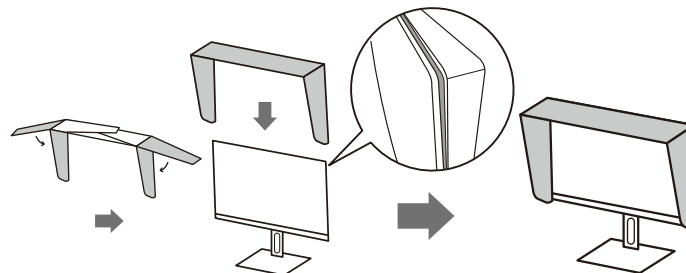
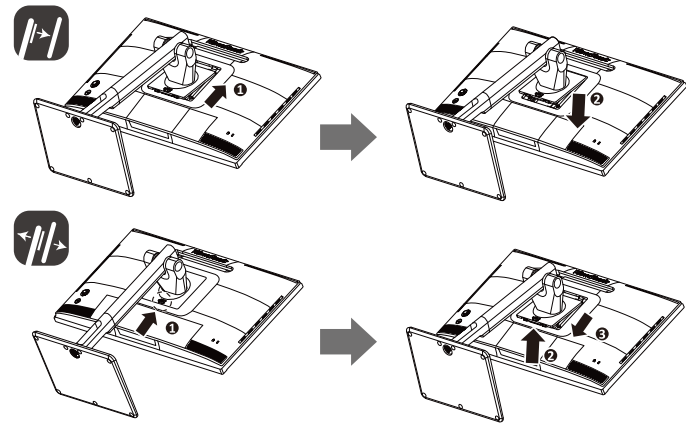
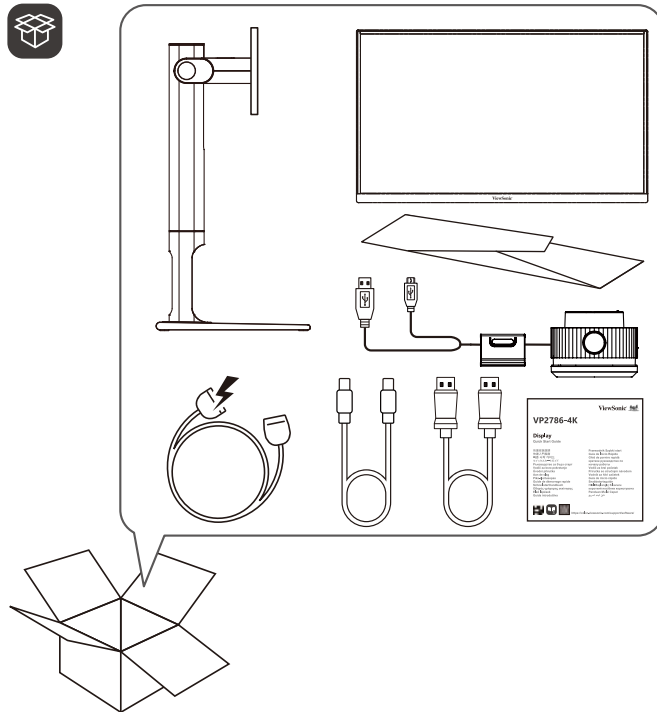
快速安裝說明
快速入門指南
빠른 시작 가이드
クイックスタートガイド
Ръководство за бърз старт
Vodič za brzo pokretanje
Úvodní příručka
Aan de slag
Pika-aloitusopas
Guide de démarrage rapide
Schnellstarthandbuch
Οδηγός γρήγορης εκκίνησης
Első lépések
Guida introduttiva

Przewodnik Szybki start
Guia de Início Rápido
Ghid de pornire rapidă
краткое руководство по началу работы
Vodič za brzi početak
Príručka so stručným návodom
Vodnik za hitri začetek
Guía de inicio rápido
Snabbstartsguide
Hızlı Başlangıç Kılavuzu
короткий посібник користувача
Panduan Mulai Cepat
دليل البدء السريع

P/N:746.08D01.0001

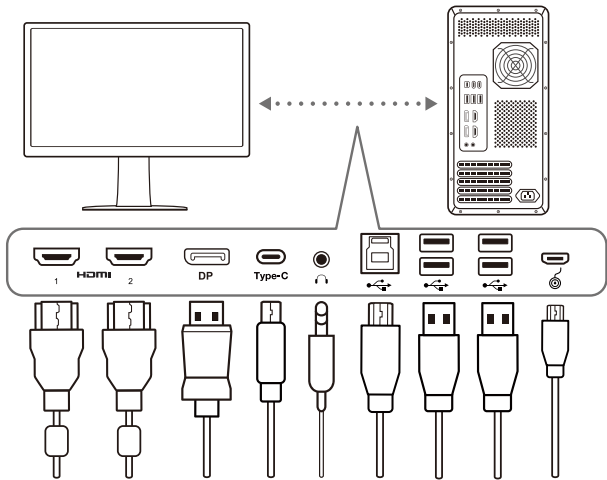
<https://color.viewsonic.com/support/software/>

ViewSonic®

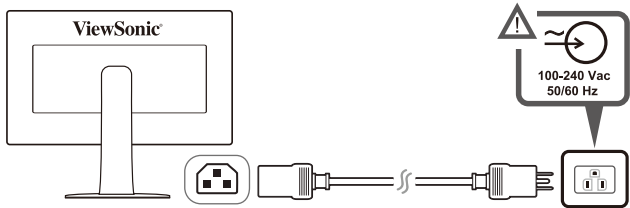




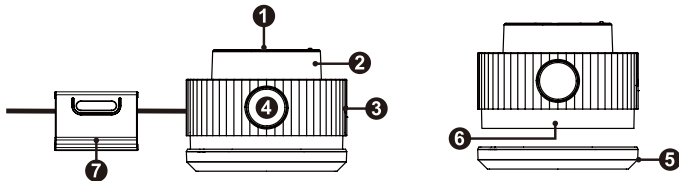
1



2



Product Overview

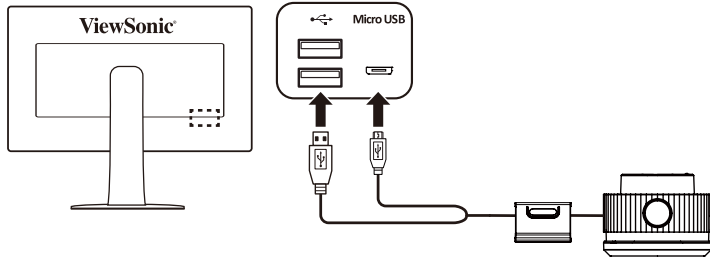


- 1. Confirm Button
- 2. Dial
- 3. Grip
- 4. Back Button
- 5. Lens Cap
- 6. Lens
- 7. Adjustable Weight

Initial Setup

Connecting the ColorPro™ Wheel

Connect the USB Type A and Micro USB cable of the ColorPro™ Wheel to the USB Type A and Micro USB port of the monitor.

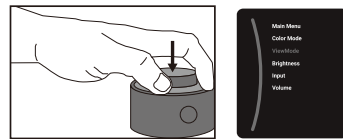


Using the Device

Using the ColorPro™ Wheel

Enter the On-Screen Display (OSD) Menu

Enter the OSD Menu by pressing the Confirm Button.



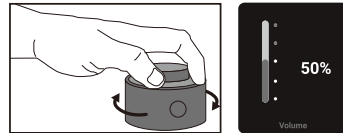
Select an Option and Confirm

Rotate the Dial to select an option, and press the Confirm Button to confirm.



Adjust the Value

Rotate the Dial left or right to adjust the value of the selected option.



Back

Press the Back Button at any time to return to the previous option.

