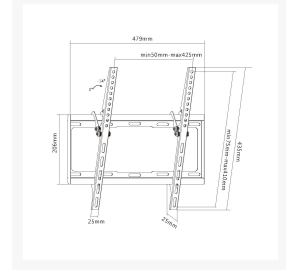
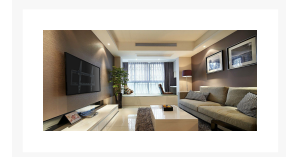


650311 32"-55" Tilt TV Wall Mount Bracket

Product Images



Short Description

- Max. Load Capacity: 35Kg
- Max. VESA: 400x400
- Free-tilting design for multiple monitor viewing angles
- Slide-in wall plate provides easy access for attachment and detachment
- Integrated bubble level assures easy installation alignment
- VESA standards compliant

Description

The equip® TV Wall Mount Bracket is a compact but sturdy product that ensures a reliable installation of your LCD/Plasma TV. Follow the graphic guide included in the package, you can install your TV on your own with ease. The wall bracket fits most of the wall materials- brick, concrete and wood, making the ideal choice for you to set up your screens.

Additional Information

Harmonized System (HS) code	852990
Customs product code (TARIC)	8529909700
Approval and Compliance	RoHS
Package Contents	650311 Manual screws kits
Color	Black
EAN	4015867186701
Model Number	650311
Mounting hole pattern	Universal
Anti-theft	No
Cable management	No
Bracket type	Tiltable
Installation	Single Stud
Distance to wall (Profile)	25mm
Load Capacity (kg)	35Kg
Material	Stainless Steel
Pan (Swivel) range	No
Screens support quantity	1
Support Curved TV (Monitors)	Yes
Tilt range	-14° ~ 0°
VESA compatibility	100x200, 200x200, 300x200, 200x300, 300x250, 300x300, 400x300, 300x400, 400x200, 400xX400
Mount	Wall mount
Dimensions (W x D x H)	410 x 25 x 455 mm
Product weight (kg)	0,95

