

**EPSON**<sup>®</sup>  
EXCEED YOUR VISION



**All-in-One**  
Print | Copy | Scan | Fax

**Epson Stylus™**  
Office  
**TX300F**

**Affordable & Versatile**  
**All-In-One with Easy Fax Function**

- 30-sheet Auto Document Feeder  
- For effortless scanning, copying and faxing
- Epson DURABrite™ Ultra Ink  
- Laser quality, water and smudge resistant prints
- Economical individual ink cartridges  
- Only replace the colour you use

# All-in-One

Print Copy Scan Fax

## Epson Stylus™ Office TX300F

## Convenient Auto Document Feeder, Laser-sharp Quality & Economical Ink

Print, copy, scan and fax with the Epson Stylus™ Office TX300F, the affordable one-stop solution to all your office needs.

### Enhance Business Productivity

#### 30-sheet ADF

The Epson Stylus™ Office TX300F is equipped with a 30-sheet Auto Document Feeder, bringing you efficient multiple-page copying, scanning and faxing.

In addition, faxing is fast and effortless with a fax speed of up to 33.6kbps and convenient speed dial features. The 180-page fax storage memory ensures all your important incoming faxes will be received securely.



Further, Epson's Micro Piezo™ print head technology delivers unrivalled quality prints with VSDT (Variable Sized Droplet Technology) without compromising on speed.

### Economical Printing

#### Individual Ink Cartridges

Epson individual ink cartridges allow you to maximise usage, as you only replace the colour you use. In addition, the black ink cartridge is available in both standard and high capacity to cater to different printing volumes. Reduce the inconvenience of changing cartridges frequently and minimise your running costs, by purchasing your ink set based on your business needs.



### Superior Print Speed

Maximise time efficiency and productivity with a superior print speed of 31 pages per minute. No longer waste time waiting for your printouts.



### Professional Quality

#### Laser-sharp Quality

Epson DURABrite™ Ultra ink delivers laser-sharp quality and brilliantly coloured prints for all your professional needs. Most importantly, prints dry in an instant and are water, smudge and fade resistant. Rest assured that important business documents will last for years to come.



### Energy Efficient Features

The Energy Star compliant Epson Stylus™ Office TX300F consumes only 11W during printing. Energy efficiency is key to minimising running costs.

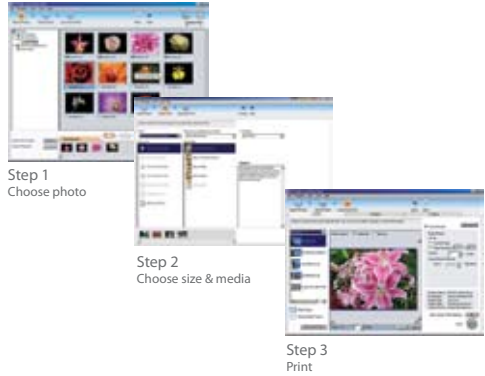


## Added Functionality

### Photo Perfection

The Epson Stylus™ Office TX300F comes with powerful and easy-to-use photo management software including:

- Epson Easy Photo Print  
Achieves photo lab quality prints in just 3 steps with this easy-to-use software.
- Epson PhotoEnhance  
Gives you beautiful and natural prints with automatic adjustments of skin tones, colour casts and exposure levels, adding a professional touch to photos.



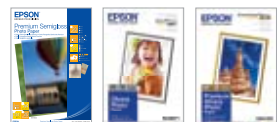
## Partners in Perfection



An efficient and key partner to your office document digitisation needs, Epson's range of business scanners brings you awesome image quality and accurate colour reproduction. Simply scan to archive or to share.



Epson inks are designed specifically to work with your Epson printer to deliver stable, long-lasting prints.



Epson specialty paper media is designed to complement Epson genuine inks to produce exceptionally high quality prints.

# Epson Stylus™ Office TX300F

Weight: 7.2kg



To use USB port, your PC must conform to PC98 specifications, and have Windows preinstalled. Consult the documentation provided with your PC for further information about USB connectivity. Note also that printing errors may occur if non-standard cables or more than 2 USB hub connections are used.



\* Print speed (PPM) when printed on A4 plain paper in the fastest mode, 10x15cm photo print speed when printed on Epson Premium Glossy Photo Paper in default mode. Print speed may vary depending on system configuration, print mode, document complexity, software, type of paper used and connectivity. Print speed does not include processing time on host computer.



Black text      Black text and graphics      Photo 4R (41x61)

Epson is the registered trademark of Seiko Epson Corporation. All other product names and other company names used herein are for identification purpose only and may be the trademarks or registered trademarks of their respective owners. Epson disclaims any and all rights in those marks. Scan/Print samples shown herewith are simulations. Specifications are subject to change without notice.

## SPECIFICATIONS

<b>PRINTER TYPE</b>	
PRINTING METHOD	On-demand ink jet (piezoelectric)
NOZZLE CONFIGURATION	90 nozzles Black, 29 nozzles, each colour (Cyan, Magenta, Yellow)
PRINT DIRECTION	Bi-directional printing, Uni-directional printing
<b>PRINT QUALITY</b>	
MAXIMUM RESOLUTION	5760x1440 dpi (with Variable-Sized Droplet Technology)
MINIMUM INK DROPLET VOLUME	4pl
<b>PRINT SPEED*</b>	
BLACK TEXT MEMO (A4)	Approx. 31 ppm (Draft)
COLOUR TEXT MEMO (A4)	Approx. 15 ppm (Draft)
PHOTO 10x15cm/4x6in	Approx. 57 sec per photo (Draft W/Border)
	Approx. 89 sec per photo (Draft Borderless)
	Approx. 167 sec per photo (Default Borderless)
* when printed on Epson Premium Glossy Photo Paper	
<b>734N INK SERIES (HIGH CAPACITY)</b>	
BLACK INK CARTRIDGE	405 pages*
<b>73N INK SERIES (STANDARD CAPACITY)</b>	
BLACK INK CARTRIDGE	260 pages*
CYAN INK CARTRIDGE	410 pages* (Composite Yield)
MAGENTA INK CARTRIDGE	
YELLOW INK CARTRIDGE	
*Based on ISO/IEC 24711 & 24712 Test Suite	
<b>LCD SCREEN</b>	
LCD SCREEN	2-line Text
<b>COPY SPEED**</b>	
BLACK TEXT MEMO (A4)	Approx. 31cpm (Draft)
COLOUR TEXT MEMO (A4)	Approx. 9 cpm (Draft)
REDUCTION/ENLARGEMENT	Auto Fit Function
COPY MODES	Plain Paper - Draft/Standard/Best copy mode(W/Border) Photo Paper/Standard copy mode(Borderless)
<b>SCANTECHNOLOGY</b>	
SCANNER TYPE	A4 Flatbed colour image scanner
SENSOR TYPE	CIS
OPTICAL RESOLUTION	1200 X 2400 DPR 48 bits input (11bits/colour), 24 bits output (8bits/colour)
<b>SCANNING SPEED</b>	
MONOCHROME	A4 300dpi Approx. 2.2mSec/line
COLOUR	A4 200dpi Approx. 7.2msec/line
MONOCHROME	A4 600dpi Approx. 7.2msec/line
COLOUR	A4 600dpi Approx. 13.1msec/line
MONOCHROME	A4 1200dpi Approx. 8.8msec/line
COLOUR	A4 1200dpi Approx. 25.4msec/line
<b>FAX FUNCTION</b>	
TYPE OF FAX	Walk-up black-and-white and color fax capability
FAX SPEED	Up to 33.6kpbs
FAX RESOLUTION	Standard (200x100), Fine (200x200), Photo (200x200 with error diffusion)
ERROR CORRECTION MODE	COTI/ITU Group 3 fax with Error Correction Mode.
FAX SPEED DIALS (MAX)	60 Names & Numbers
PAGE MEMORY	Page memory up to 180 pages (ITU-T No.1 chart)
FAX TRANSMISSION SPEED	Approx. 3sec/page
<b>AUTO DOCUMENT FEEDER FUNCTION</b>	
MAXIMUM DOCUMENT SIZE	A4, US Letter, Legal size
SUPPORT PAPER TYPE	Only support Plain Paper
SUPPORT PAPER THICKNESS	75-95g/m <sup>2</sup>
MAXIMUM NUMBER OF ORIGINAL	30pages (75g/m <sup>2</sup> ) or 3 mm (Letter, A4) / 10 sheets (Legal)
<b>PAPER HANDLING</b>	
PAPER FEED METHOD	Friction feed
PAPER HOLD CAPACITY	Input capacity: 120 sheets, A4 Plain paper (64g/m <sup>2</sup> )
PAPER SIZE(Euro/OSMEA/Asia)	A4, Letter, Legal, 13x18cm(5x7"), 10x15cm(4x6"), 9x13cm(3.5x5"), 13x20cm(5x8"), 16.9 wide(4x.11"), 20x25cm(8x10"), A6, A5, B5, Envelopes: No.10, DL, C6
PRINT MARGIN	0mm top, left, right, bottom with custom settings in printer driver. Otherwise 3mm top, left, right, bottom.
<b>INTERFACE†</b>	
USB - Compatible with the USB 2.0 Specification	
INPUT DATA BUFFER	64 KB
<b>COLOUR MATCHING</b>	
ICM Profiles(Windows), AdobeRGB (Windows and Mac), ColorSync2.0 Compatible(Mac)	
<b>NOISE LEVEL</b>	
	39 dB(A) Measurement: according to ISO7779 Pattern with PGP/Photo RPM mode
<b>ELECTRICAL SPECIFICATIONS</b>	
RATED VOLTAGE	220 - 240V (will vary depending on area)
RATED FREQUENCY	50 - 60 Hz
POWER CONSUMPTION	Approx. 11W (Standalone printing, ISO10561 Letter Pattern) Approx. 3.5W (Sleep Mode) ENERGY STAR rating
<b>PRINTER SOFTWARE ON CD-ROM</b>	
PRINTER DRIVERS	Windows 2000/XP/VP x64 Edition/Vista Mac OS 10.3.9 or later with USB
ON-LINE GUIDE	Yes
<b>EPSON SPECIALTY MEDIA (with its suggested applications)</b>	
Media Type	Order Code
PHOTO QUALITY INK JET PAPER - A4	C13S041786
MATTE PAPER HEAVY WEIGHT - A4	C13S041259
PREMIUM SEMI-GLOSS PHOTO PAPER - A4	C13S041332
PREMIUM SEMI-GLOSS PHOTO PAPER - 10X15CM/4X6"	C13S041925

**EPSON®**  
EXCEED YOUR VISION