



HPE Performance Agent and HPE Performance Manager software



HPE Performance Manager software products deliver a powerful system resource and performance management solution. HPE system performance tools have led the industry for years, providing 24x7 monitoring, consistent cross-platform metrics, bottleneck analysis, and drill-down capability for heterogeneous server environments.

Meet your performance management challenges

Today's computing environments can be not only large and complex but also difficult and costly to administer. What system resources are needed by an application? Where is the performance bottleneck? Are your end-user response times acceptable? Are service levels being met? Can you view baselines and forecast for growth?

The HPE Performance products provide answers to these questions. These complementary software products help you achieve end-to-end resource management

by providing a single interface for centrally monitoring, analyzing, and forecasting resource utilization for distributed multi-vendor environments.

With HPE Performance products you can:

- Help optimize your investment in infrastructure.
- Resolve problems proactively and increase performance.

The HPE Performance Agent collects and logs performance metrics for historical analysis and uses this measurement data to detect exception conditions. Exception conditions (alarms) can be based on individual metrics or combinations of metrics and can be defined using both thresholds and duration, allowing proactive detection of problems.

For example, an exception condition could be defined as occurring when a client/server application's response time exceeds a predefined threshold or when CPU usage remains over 75 percent and wait queue

length is greater than three for more than five minutes. The HPE Performance Agent detects and alarms on any exception conditions, including by default major system performance bottleneck areas. Alarms are forwarded automatically to the HPE Operations message console if an Operations Agent is present on the system. Alarms also can be forwarded via SNMP traps.

Help enhance your investment in infrastructure

HPE Performance Manager software connects to Performance and Operations Agents running on your monitored systems to provide the information you need to determine how system resources are being used or misused by applications. Providing visualization of near-real-time and historical performance data is key to managing the end-user experience and planning for change.

The HPE Performance Agent, with its patented intelligent collection technology, provides 24x7 low-overhead monitoring of all servers in your distributed environment.

It collects, summarizes, and logs resource and performance measurement data from applications, databases, networks, and operating systems. It also provides integration interfaces that allow you to input key performance indicators unique to your systems or instrument your applications to monitor response time

Using this historical data, HPE Performance Manager enables in-depth examination of resource utilization and performance trends. With this information, you uncover bottlenecks, which if unchecked result in poor service levels. By comparing activity levels, you can balance workloads, allowing you to allocate resources and deliver a quality of service that parallels the business needs.

Lastly, HPE Performance Manager data can be exported in various formats, for use in capacity planning, statistical analysis, and spreadsheet applications. HPE partners such as SAS, HyPerformix, and OPNET use the metrics from the HPE system performance tools to enable their analysis and modeling products.



Figure 1. Diagnostic View with real-time and historical graphs

Key features and benefits

HPE Performance Manager software

HPE Performance Manager Software is a web-based analysis and visualization tool designed to analyze performance trends of applications, systems, and services. It uses data collected from HPE Performance Agents and several other sources to isolate performance bottlenecks and increase resource uptime.

HPE Performance Manager also has a Diagnostic View with a highly interactive UI where you can monitor and analyze real-time and historical performance data collected by various data sources. It lets you easily create graphs on the fly to compare metrics across various systems, instances, and data sources. You can quickly navigate to any timeframe in the agent, drag and drop metrics across graphs, correlate between various metrics, and easily switch between real-time and historical data.



Figure 2. Quickly navigate to any timeframe

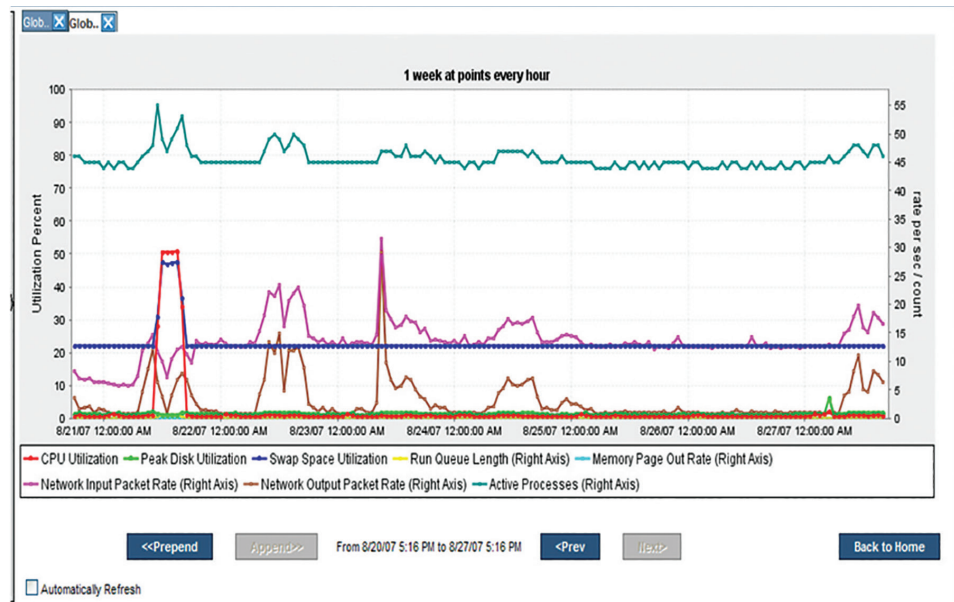


Figure 3. Display more data without changes in summarization

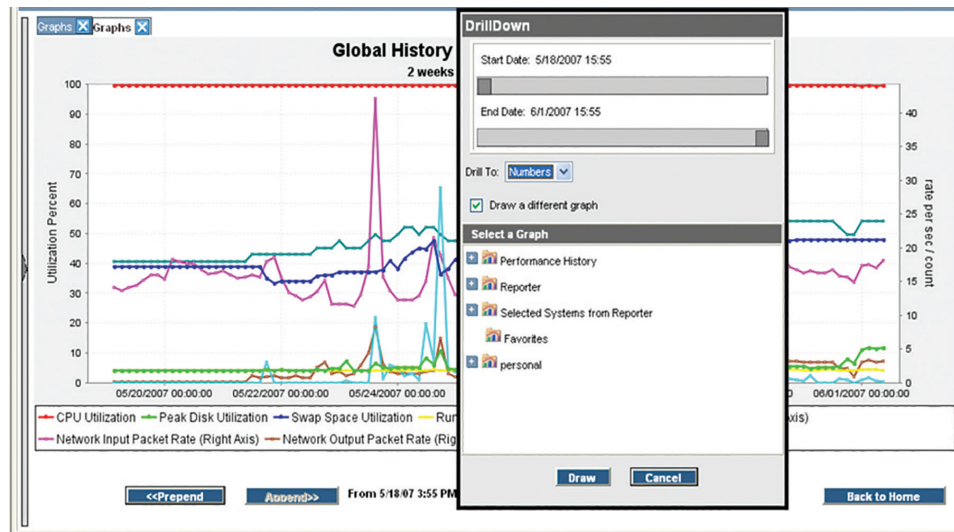


Figure 4. Drill-down feature

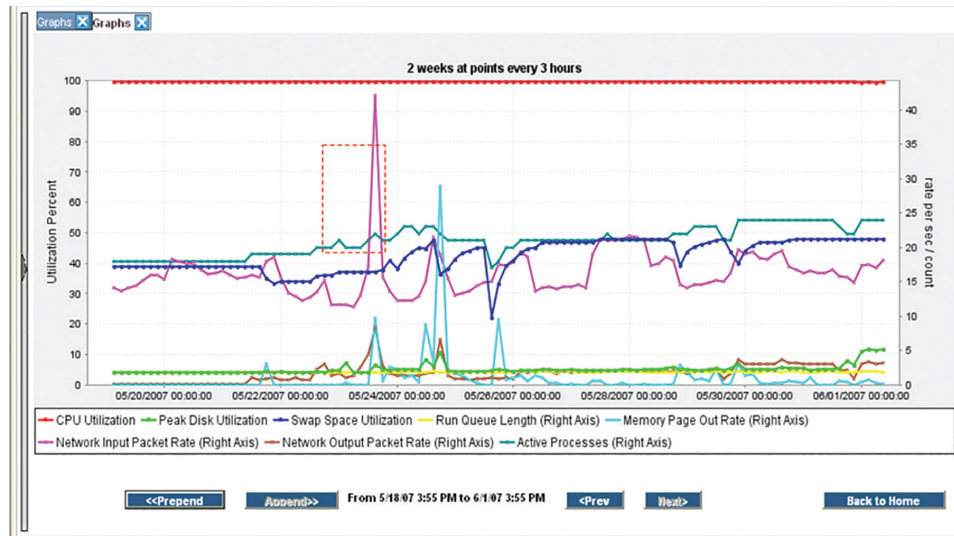


Figure 5. Select the area to zoom in on

HPE Performance Manager also provides the following features and functionality:

- The ability to zoom in/zoom out and drill-down on graphs for detailed analysis
- The ability to segment and view graphs by customer
- Out-of-the-box graphs and tables for common use cases, such as health monitoring and bottleneck detection
- Ability to include metrics and data around multiple virtualization platforms from vendors like Microsoft®, VMware, and Citrix
- Customized graph templates for specific needs using Design Wizard
- Horizontal and vertical scrolling through graphs
- Flexible, ad hoc performance graphing for multiple data sources such as HPE Operations Agent, Performance Agent, SiteScope, and Reporter
- Forecasting and trending capabilities via forecast and baseline graphs
- Exporting of data to common formats, such as Excel, TSV, XML and CSV, for further analysis and post-processing

HPE Performance Agent software

HPE Performance Agent is the collection, logging, and alarming component of the HPE Performance software family. With its powerful end-to-end application response measurement capabilities, the HPE Performance Agent is the core enabling technology in any service management strategy.

The agent is installed on each system to be monitored. It provides:

- Low overhead, continuous collection, and logging of more than 300 global process application and system metrics
- Sophisticated alarming—on combinations of metrics, user-definable symptoms and/or by the length of time a threshold value has been exceeded
- Built-in Data Source Integration (DSI) technology, enabling easy integration of data from any external source
- Configurable data logging intervals:
 - Process metrics can be logged at intervals from 5–60 seconds
 - Non-process metrics can be logged at intervals from 15–300 seconds

- Support for multiple virtualization platforms
- Log file roll-over based on size and number of days of data
- The ability to export data in several standard formats
- The ability to generate and send SNMP-based alarms
- The ability to generate local actions triggered by alarms
- Support for multiple platforms including HPE-UX, HPE OpenVMS, SunOS/Solaris, IBM AIX, Tru64 UNIX®, Linux, and Microsoft Windows®

Integration with other HPE software solutions

While HPE Performance products provide a solid standalone solution, they also integrate with other HPE Operations Center products such as HPE Operations Manager, SiteScope, and Reporter.

HPE Performance Agents can be deployed, configured, and controlled from the HPE Operations Manager software. Once deployed, alarms are forwarded to Operations Manager, allowing the combination of operations and performance data in the same interface. In addition, you can launch HPE Performance Manager from Operations Manager to view context-sensitive graphs for any managed node.

The HPE Performance Agent’s approach to support virtualization includes logical system groupings of resources to report partitioned workloads in a flexible manner.

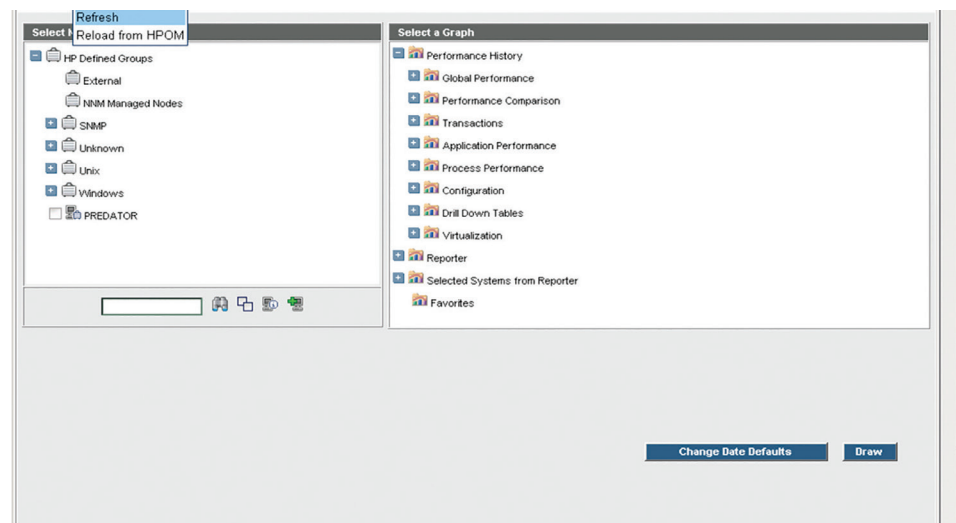


Figure 6. Automatically import node list from HPE Operations Manager

Customize your IT lifecycle management, from acquisition of new IT, management of existing assets, and removal of unneeded equipment.

Learn more.

Resources

For more information on HPE GlancePlus software products, visit **[hpe.com/software/glance](https://www.hpe.com/software/glance)**

Contact information

To find an HPE Software sales office or reseller near you, visit **<https://www.hpe.com/us/en/buy-parts-products.html>**

Gain a complete solution

Comprehensive training

HPE provides a comprehensive curriculum of HPE Software and IT Service Management courses. These offerings provide the training you need to realize the full potential of your HPE solutions, increase your network optimization and responsiveness, and achieve better return on your IT investments.

With more than 30 years of experience meeting complex education challenges worldwide, HPE knows training. This experience, coupled with unique insights into HPE software products, positions HPE to deliver the optimum training experience. For more information about these and other educational courses, visit **[hpe.com/software](https://www.hpe.com/software)**.

HPE Services

Get the most from your software investment. We know that your support challenges may vary according to the size and business-critical needs of your organization.

HPE provides technical software support services that address all aspects of your software lifecycle. This gives you the flexibility of choosing the appropriate support level to meet your specific IT and business needs. Use HPE cost-effective software support to free up IT resources, so you can focus on other business priorities and innovation.

HPE Software Support Services gives you:

- One stop for all your software and hardware services, saving you time with one call 24x7, 365 days a year
- Support for: VMware, Microsoft, Red Hat, and SUSE Linux as well as HPE Insight Software
- Technical expertise and remote tools to access fast answers, reactive problem resolution, and proactive problem prevention
- Global Reach Consistent Service Experience giving global technical expertise locally

For more information go to **<https://softwaresupport.hpe.com>**.

Learn more at **[hpe.com/software/ltom](https://www.hpe.com/software/ltom)**

Data sheet



© Copyright 2007-2008, 2011, 2014, 2017 Hewlett Packard Enterprise Development LP. The information contained herein is subject to change without notice. The only warranties for Hewlett Packard Enterprise products and services are set forth in the express warranty statements accompanying such products and services. Nothing herein should be construed as constituting an additional warranty. Hewlett Packard Enterprise shall not be liable for technical or editorial errors or omissions contained herein.

Microsoft and Windows are U.S. registered trademarks of Microsoft Corporation. UNIX is a registered trademark of The Open Group.

4AA1-1022ENW, March 2017, Rev. 5