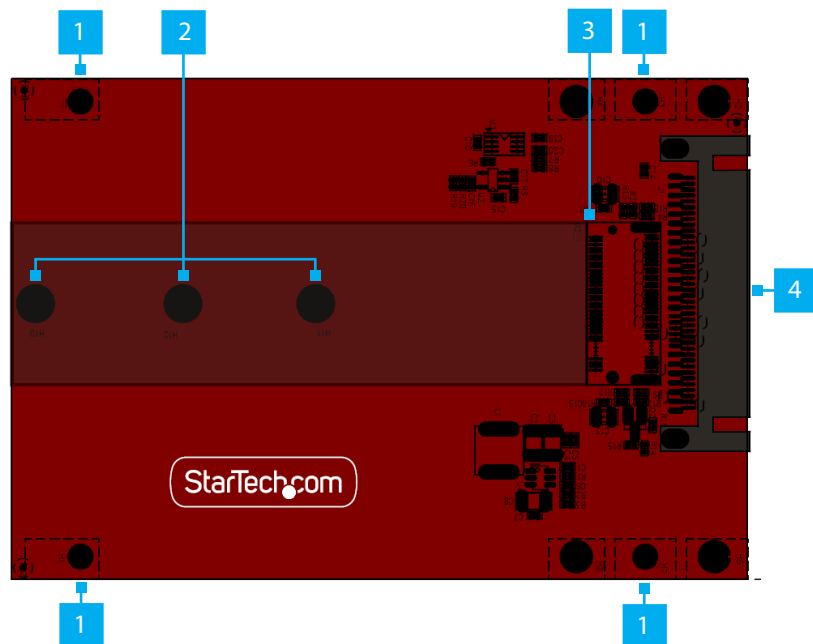


M.2 NVMe to U.3 (SFF-TA-1001) Adapter

Product ID

1M25-U3-M2-ADAPTER



Component	Function
1 M.2 to U.3 Adapter Mounting Holes	<ul style="list-style-type: none"> Secure the M.2 to U.3 Adapter to the Computer Case's Drive Mounting Bay
2 Standoff, Standoff Installation Screw, and Drive Mounting Screw	<ul style="list-style-type: none"> Secure an M.2 Storage Device to the M.2 to U.3 Adapter Compatible PCIe M.2 SSDs (NVMe): 2242, 2260, and 2280 drives
3 M.2 Connector	<ul style="list-style-type: none"> Connect a M Keyed M.2 Storage Device to the M.2 to U.3 Adapter
4 U.3 Connector	<ul style="list-style-type: none"> Connect the M.2 to U.3 Adapter to a U.3 Host Controller

Requirements

- U.3 (SFF-TA-1001) Enabled Computer x 1
- M.2 NVMe Drive x 1

Note: The M.2 to U.3 Adapter does not support SATA M.2 Drives

For the latest product information, technical specifications, and declarations of conformance, please visit: www.StarTech.com/1M25-U3-M2-ADAPTER

Package Contents

- M.2 to U.3 Adapter x 1
- Quick-Start Guide x 1

Installation

Warning: Circuit Boards can be damaged by static electricity. Ensure that the Installer is properly grounded before opening the Computer Case or touching the M.2 to U.3 Adapter. The Installer should wear an Anti-Static Strap when installing any computer component. If an Anti-Static Strap is not available, discharge any built-up static electricity by touching a large Grounded Metal Surface for several seconds. Only handle the M.2 to U.3 Adapter by its edges and do not touch the gold connectors.

Install the M.2 NVMe Storage Device

- Place the M.2 Drive next to the Adapter and note the Drive Installation Holes that match the length of the M.2 Drive. If the Standoffs and Installation Screws are already installed in the correct position, proceed to step 6.
- On the front of the M.2 to U.3 Adapter, use Pliers to hold the Standoff in place while using a Phillips Head Screwdriver to remove the Screw, located on the back of the Adapter.
- Use the Phillips Head Screwdriver to remove the Screw on the front of the M.2 to U.3 Adapter.
- Remove the Standoff.
- Install the Standoff in the Drive Installation Hole that matches the length of the Drive.
- Gently slide the M.2 Drive Connector into the corresponding M.2 Connector, located on the M.2 to U.3 Adapter, and press the Drive down toward the adapter until the Drive is properly seated.

Note: The M.2 Connector on the Adapter is M Keyed and only fits M Keyed M.2 Storage Devices.

7. Replace the **Standoff Installation Screw**, removed in **Step 2**, and tighten using a **Phillips Head Screwdriver**.
8. Insert the **Drive Mounting Screw** through the **Drive Slot** and into the **Standoff** and use the **Phillips Head Screwdriver** to tighten the **Drive Mounting Screw**, securing the **Drive** in place.

Install the M.2 to U.3 Adapter

Note: The M.2 to PCIe Adapter requires a U.3 (SFF-TA-1001) interface and will not work with a U.2 (SFF-8639) interface on the host computer. To confirm if the interface is U.3 or U.2, please consult the computer manufacturer's documentation.

1. Turn off the **Computer** and disconnect the **Power Cable** and any **Peripheral Devices** that are connected (e.g. printers, external hard drives, etc.).
2. Remove the **Cover** from the **Computer Case**.

Note: Consult the documentation that came with the **Computer** for details about how to do this safely.

3. Locate an available **U.3 (SFF-TA-1001) Connector** in the **Host Computer**.
4. Use a **Phillips Head Screwdriver** and the included **Drive Mounting Screws** to secure the **M.2 to U.3 Adapter** to an available **Drive Bay** in the **Computer**.

Note: Consult the documentation that came with the **Computer** for details about drive bay locations.

5. Gently connect the **M.2 to U.3 Adapter** to the available **U.3 (SFF-TA-1001) Connector**.

Regulatory Compliance

FCC - Part 15

This equipment has been tested and found to comply with the limits for a Class B digital device, pursuant to part 15 of the FCC Rules. These limits are designed to provide reasonable protection against harmful interference in a residential installation. This equipment generates, uses and can radiate radio frequency energy and, if not installed and used in accordance with the instructions, may cause harmful interference to radio communications. However, there is no guarantee that interference will not occur in a particular installation. If this equipment does cause harmful interference to radio or television reception, which can be determined by turning the equipment off and on, the user is encouraged to try to correct the interference by one or more of the following measures:

- Connect the equipment into an outlet on a circuit different from that to which the receiver is connected.
- Consult the dealer or an experienced radio/TV technician for help

This device complies with part 15 of the FCC Rules. Operation is subject to the following two conditions:

(1) This device may not cause harmful interference, and (2) this device must accept any interference received, including interference that may cause undesired operation. Changes or modifications not expressly approved by StarTech.com could void the user's authority to operate the equipment.

Industry Canada Statement

This Class B digital apparatus complies with Canadian ICES-003.

Cet appareil numérique de la classe [B] est conforme à la norme NMB-003 du Canada.

CAN ICES-3 (B)/NMB-3(B)

This device complies with Industry Canada licence-exempt RSS standard(s). Operation is subject to the following two conditions:

(1) This device may not cause interference, and (2) This device must accept any interference, including interference that may cause undesired operation of the device.

Le présent appareil est conforme aux CNR d'Industrie Canada applicables aux appareils radio exempts de licence. L'exploitation est autorisée aux deux conditions suivantes:

(1) l'appareil ne doit pas produire de brouillage, et (2) l'utilisateur de l'appareil doit accepter tout brouillage radioélectrique subi, même si le brouillage est susceptible d'en compromettre le fonctionnement.

Warranty Information

This product is backed by a two-year warranty.

For further information on product warranty terms and conditions, please refer to www.startech.com/warranty.

6. Replace the **Cover** from the **Computer** that was removed in **Step 2**.
7. Reconnect all of the **Peripheral Devices** that were disconnected in **Step 1**.
8. Reconnect the **Power Cable** to the rear of the **Computer**.
9. Power on the **Computer** and connected **Peripheral Devices**.

Limitation of Liability

In no event shall the liability of StarTech.com Ltd. and StarTech.com USA LLP (or their officers, directors, employees or agents) for any damages (whether direct or indirect, special, punitive, incidental, consequential, or otherwise), loss of profits, loss of business, or any pecuniary loss, arising out of or related to the use of the product exceed the actual price paid for the product. Some states do not allow the exclusion or limitation of incidental or consequential damages. If such laws apply, the limitations or exclusions contained in this statement may not apply to you.

Use of Trademarks, Registered Trademarks, and other Protected Names and Symbols

This manual may make reference to trademarks, registered trademarks, and other protected names and/or symbols of third-party companies not related in any way to StarTech.com. Where they occur these references are for illustrative purposes only and do not represent an endorsement of a product or service by StarTech.com, or an endorsement of the product(s) to which this manual applies by the third-party company in question. StarTech.com hereby acknowledges that all trademarks, registered trademarks, service marks, and other protected names and/or symbols contained in this manual and related documents are the property of their respective holders.

PHILLIPS® is a registered trademark of Phillips Screw Company in the United States or other countries



Points de collecte sur www.quefairede mesdechets.fr
Privilégiez la réparation ou le don de votre appareil !

StarTech.com Ltd.
45 Artisans Cres
London, Ontario
N5V 5E9
Canada

StarTech.com LLP
4490 South Hamilton
Road
Groveport, Ohio
43125
U.S.A.

StarTech.com Ltd.
Unit B, Pinnacle 15
Gowerton Rd,
Brackmills
Northampton
NN4 7BW
United Kingdom

StarTech.com Ltd.
Siriusdreef 17-27
2132 WT Hoofddorp
The Netherlands

FR: startech.com/fr
DE: startech.com/de
ES: startech.com/es
NL: startech.com/nl
IT: startech.com/it
JP: startech.com/jp