



JLAB®
JBUDS PODS
EARBUDS

We love that you are rocking JLab!
We take pride in our products and fully stand behind them.



YOUR WARRANTY

All warranty claims are subject to JLab authorization and at our sole discretion. Retain your proof of purchase to ensure warranty coverage.



CONTACT US

Reach out to us at support@jlab.com or visit jlab.com/contact

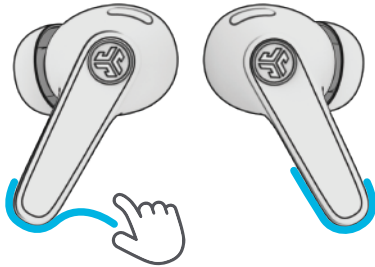
REGISTER TODAY

jlab.com/register

[Product updates](#) | [How-to tips](#)
[FAQs & more](#)

PAIR UP

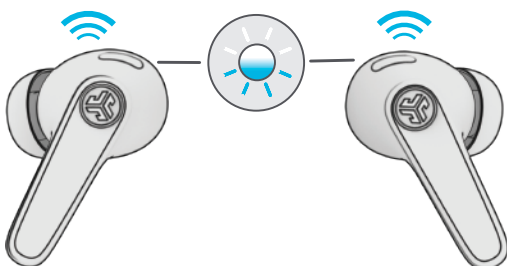
- 1** Remove stickers and place back in charging case.



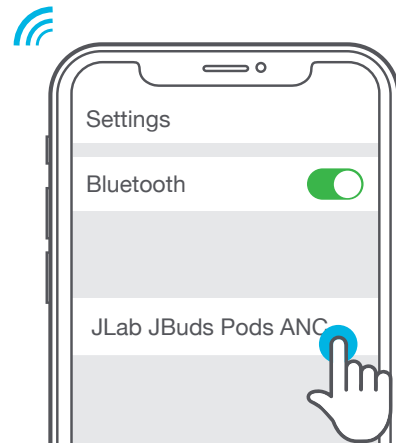
- 2** Pulsing blue on case indicates charging. Remove earbuds from case.



- 3** One earbud blinks blue/white = Ready to Pair



- 4** Select JLab JBuds Pods ANC in your Bluetooth settings to connect.



Voice prompt "Bluetooth connected" followed by **lights off** will indicate connection.

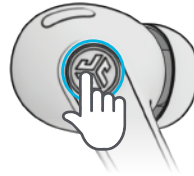
GO AHEAD, PRESS THE BUTTON


1x ● 2x ●● 3x ●●● Press Hold 


LEFT



RIGHT




- | | |
|---|---|
| VOLUME DOWN ● | VOLUME UP ● |
| SIRI/OK GOOGLE ●● | PLAY/PAUSE ●● |
| NOISE CONTROL  | TRACK FORWARD  |
| EQ CHANGE ●●● | EQ CHANGE ●●● |

- ANSWER CALL ●
- HANG UP ●●
- REJECT INCOMING CALLS 

GET CHARGED (EARBUDS)



 **Blue light**
Earbuds charging

 **White light**
Case 100%-25%

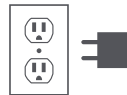
 **Red light**
Case less than 25%
(charge case)

GET CHARGED (CASE)

Connect the JBuds Pods ANC to computer, USB-C charger, or wireless charging pad.



OR

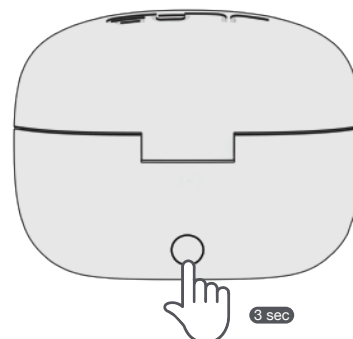


 Fully Charged



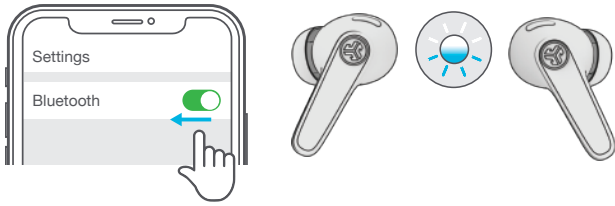
RESET BUTTON

(removes previous connected devices and resets earbuds)



MULTIPOINT

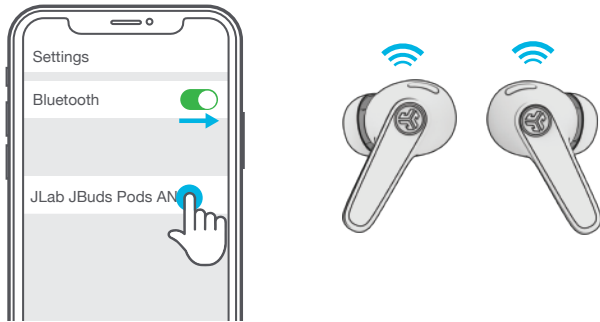
- 1 Once **FIRST** device is connected, turn off Bluetooth in device settings. Earbuds will auto enter Bluetooth Pairing.



- 2 Enter your **SECOND** device Bluetooth settings and connect to JBuds Pods ANC.



- 3 Enter your **FIRST** device Bluetooth settings. Turn on Bluetooth and connect JBuds Pods ANC.



DOWNLOAD THE APP

Customize JBuds Pods ANC features and update the latest software.

Download the **JLab App** in Apple/Google Play Store.



[Shop products](#) | [Product alerts](#) | [Burn-in your headphones](#)

JLab Store + Burn-in Tool

