

Epson Stylus[®] Pro 4880

REDEFINING THE FUTURE OF PRINTING



The ideas from thousands of Creative Professionals are built into every Epson Stylus Pro printer. As a result, the Epson Stylus Pro 4000 Series has become the standard within the world's greatest design studios, photographic labs, and commercial print shops. And, the tradition continues.

Introducing the new Epson Stylus Pro 4880.

Designed to meet the needs of the most demanding professionals, the Epson Stylus Pro 4880 incorporates a unique, 17-inch wide printer design with a breakthrough, new ink technology, forcing the industry to reconsider what's possible from photographic ink jet printing.

Epson UltraChrome K3™ is the standard by which all other professional-level ink technologies are judged. Now enhanced with our breakthrough new Vivid Magenta pigments, our newest-generation ink technology requires only eight colors, including a three-level black technology, to significantly raise the quality levels for professional color and black-and-white prints.

Imagine producing archival prints with amazing color accuracy, gloss level, and scratch resistance, while providing consistently stable colors that significantly outperform lesser ink technologies. Imagine producing

professional neutral and toned black-and-white prints with even higher density levels, with virtually no metamerism or bronzing.

With an even higher level of ink droplet accuracy, we've developed an all-new MicroPiezo® AMC™ print head, along with an all-new ink repelling coating technology to dramatically reduce nozzle clogging. And, when combined with our new Epson AccuPhoto™ HD screening technology, at an astonishing resolution of 2880 x 1440 dpi, Epson has once again raised the level of image quality – even exceeding our previous best.

Handling virtually any media type in roll or cut-sheet, up to 17-inch wide, the Epson Stylus Pro 4880 incorporates a high-capacity paper tray capable of handling cut-sheet media up to 17"x 22". We even incorporated four different ways to load media, including a front-loading straight-through path capable of handling media up to 1.5 mm thick, giving you the ultimate in media flexibility.

The Epson Stylus Pro 4880 represents a level of technology unprecedented in Epson's history. By combining the extreme precision of an Epson Stylus Pro print engine, along with the extraordinary performance of Epson UltraChrome K3 ink technology, Epson is once again transforming talent into imagery.

TRANSFORMING TALENT INTO IMAGERY.



Epson Stylus Pro 4880
(Shown with optional printer stand)

Latest Generation Print Head Technology

All New 8-channel Print Head with Ink Repelling Coating Technology

- Print head design capable of handling eight separate ink channels
- 1-inch wide high-performance print head with 180 nozzles per channel
- All-new ink repelling coating to dramatically reduce nozzle clogging

All New Epson AccuPhoto HD Screening Technology

- Radical screening algorithm resulting in prints with superior color and clarity
- Maximum resolution of 2880 x 1440 dpi for incredibly sharp text and line art
- Extremely accurate fine blends and photographic transitions

Variable-sized Droplet with AMC Technology

- Produces variable-sized droplets as small as 3.5 picoliters to greatly decrease print times while optimizing photographic quality
- Enhanced Active Meniscus Control (AMC) technology precisely controls the curvature of every ink droplet within each nozzle before releasing it onto the media. The result is extremely sharp and accurate placement of ink droplets for outstanding photographic print quality.

Epson PreciseColor™ Manufacturing

In order to ensure consistent printing between multiple Stylus Pro printers of the same model, Epson has enhanced the manufacturing process to include colorimetric calibration. Eliminating the need for internal calibration devices, this system evaluates and adjusts each printer's performance at the manufacturing stage, producing consistent color output from printer to printer.



PROFESSIONAL PHOTOGRAPHY

Commercial | Fine Art
Event | Portrait | Nature
Exhibition-Quality
Black-and-White

8" x 10" prints
in 2:00 min:sec

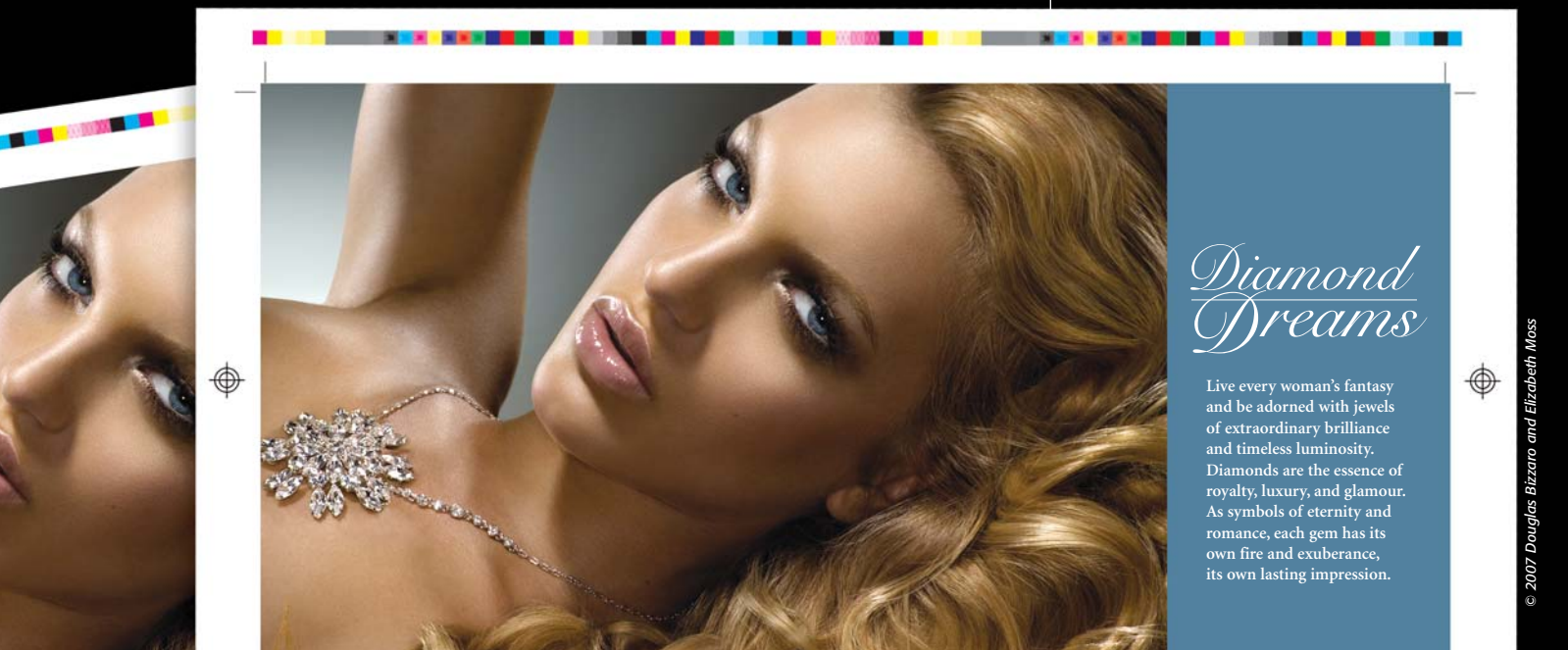
16" x 20" prints
in 6:07 min:sec

GRAPHIC DESIGN

Comps and Layouts
Packaging Mock-ups
Prepress Proofing
Signage

17" x 22" comps
and production prints
in 4:07 min:sec

17" x 22" contract
quality proofs
in 9:46 min:sec



Diamond Dreams

Live every woman's fantasy
and be adorned with jewels
of extraordinary brilliance
and timeless luminosity.
Diamonds are the essence of
royalty, luxury, and glamour.
As symbols of eternity and
romance, each gem has its
own fire and exuberance,
its own lasting impression.

Automatic Print Head Alignment Technology

- Built-in sensor reads printed data for highly precise alignment of all color channels
- Aligns both single and bi-directional print modes

Automatic Nozzle Check Technology

- Built-in sensor reads nozzle check pattern and automatically cleans print head if required – even partially clogged nozzles

Epson UltraChrome K3 with Vivid Magenta Ink Technology

Industry Defining 8-color Pigment-based Ink System

- High-density pigments for an extremely wide color gamut
- Advanced formulation of Magenta pigments for extreme blues and purples
- Professional print permanence ratings for truly sellable quality prints
- High-gloss Microcrystal Encapsulation™ Technology for reduced gloss differential
- Superior scratch resistance from improved pigment and resin chemistry
- Color is stable immediately after printing – no short-term color shifting
- Depending upon media – produces a black density up to 2.5 with an L* value of 3.9†

Three-level Black Ink Technology

- Simultaneously uses Black, Light Black, and Light Light Black inks
- Significantly improves the printer's gray balance while eliminating color casts
- Outstanding midtones and highlights for a smoother tonal range
- Virtually eliminates the metamerism and bronzing of basic pigment chemistry
- Enhances the ICC profiling process for ColorSync™ and ICM™ workflows

Two User-exchangeable Black Ink Modes

Printers can utilize two different Black ink modes – Photo Black or Matte Black. This innovative solution optimizes the Black ink density for various media types, dramatically improving the final print quality.

The standard Photo Black ink mode can be used for any media type with professional results. However, for certain Epson media types such as Velvet Fine Art, Enhanced Matte, and UltraSmooth® Fine Art, using the optional Matte Black ink mode instead, will dramatically increase black optical density for even better print quality.

Professional 17" Wide Print Engine Technology

Professional Media Handling

- Prints on virtually any media type, in roll or cut-sheet, from letter up to 17" wide
- Built-in high-capacity paper tray handling up to 250 sheets of plain letter-sized paper or up to 50 sheets of photographic media up to 17"x 22"

- Supports printing on both sides of the media without damaging the previously printed side
- User-adjustable Roll Media Spindle accepts either 2" or 3" media cores
- Four built-in media paths including roll feed, cut-sheet tray, front-top manual feed, and a straight-through front manual feed handling media up to 1.5 mm thick
- Built-in automatic media cutter

True BorderFree® Printing

- Capable of printing off both left and right edges of roll based media, while automatically cutting top and bottom edges to produce a full-bleed print on all four sides
- Fully trims your finished prints more accurately and safely than by hand

High-performance Print Engine Speeds⁴

Utilizing our latest high-performance print head technology, the Epson Stylus Pro 4880 is among the fastest professional desktop printers in the industry.

Print Mode	8" x 10"	11" x 14"	16" x 20"
Fine – 720 dpi HS	1:18	2:27	4:07
SuperFine – 1440 dpi HS	2:00	3:25	6:07
SuperFine – 1440 dpi	3:17	5:35	9:46
SuperPhoto – 2880 dpi HS	3:54	6:35	11:40
SuperPhoto – 2880 dpi	6:25	10:55	18:57

HS = High-speed Print Mode (Bi-directional Print Mode) Print speeds are shown in min:sec

Epson Intelligent High-capacity Ink System

- Eight individual 110 ml or 220 ml ink cartridges
- Greatly increases productivity by allowing you to replace ink cartridges on the fly, even during the middle of a print job
- Utilizes both 110 ml or 220 ml ink cartridges simultaneously to optimize ink usage

Superior Connectivity

- Standard connectivity includes one USB 2.0 interface and one 10/100Base-T Ethernet port
- Professional Epson photographic drivers for Macintosh® and Windows®
- Optional PANTONE® licensed and SWOP® certified PostScript® Language Level 3™ Compatible RIP by ColorBurst® (included only with ColorBurst Edition bundle)
- Fully supported by most leading third-party RIPs and workflows – the Epson Stylus Pro series printers are used within the most demanding commercial printing environments

World-Class Service and Support

- Free one-year of coverage under the Epson Preferred™ Protection Plan with toll-free telephone support available Monday through Friday and usually next-business-day full unit exchange service
- Optional one- or two-year Epson Preferred Plus service plans available

† Data based on Epson Premium Luster Photo Paper (260)



© 2007 Douglas Dubler[®]



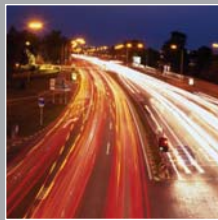
Epson UltraChrome K3 with all-new Vivid Magenta ink technology

The new standard by which all other ink systems will be judged. All new high-density magenta pigments for an extremely wide color gamut, amazing high-gloss prints, unique three-level black technology, all with virtually no metamerism or bronzing.



Advanced Black-and-White Printing Technology

Unique Epson screening and driver technology developed specifically for producing exhibition-quality, neutral or toned, black-and-white prints.



High-performance Print Engine Speeds

High-performance one-inch wide print head technology produces prints faster than any previous model, making the Epson Stylus Pro 4880 one of the fastest photographic quality printers ever made by Epson.



Professional Media Handling

Prints on virtually any media type up to 17" wide, up to 1.5 mm thick. Unique high-capacity paper tray handling cut-sheet media up to 17" x 22".



Intelligent High-capacity Ink System

Eight individual 110 ml or 220 ml ink cartridges for true professional use. You can even use both 110 ml and 220 ml sizes simultaneously to further optimize ink usage.



Auto Head Alignment and Cleaning Technology

Built-in sensor automatically aligns the 8-channel print head for extremely accurate dot placement. This system is so effective, it can even detect when a print head is getting dirty and automatically clean if needed.

Epson Stylus® Pro 4880 Print Engine Specifications

Printing Technology

Advanced MicroPiezo AMC print head
with ink repelling coating technology
8-channel, drop-on-demand, ink jet print head
9-cartridge (C, LC, VM, VLM, Y, LK, LLK, PK or MK)

Auto Head Alignment and Cleaning technology

Epson UltraChrome K3 with Vivid Magenta ink technology
Professional-level pigment-based ink technology

Nozzle Configuration

Color and Monochrome 180 nozzles x 9

Droplet Technology

Smallest droplet size 3.5 picoliters
Variable Droplet Technology can produce up to three different droplet sizes per print line

Resolution

2880 x 1440 dpi; 1440 x 720 dpi; 720 x 720 dpi;
720 x 360 dpi; 360 x 360 dpi

Print Engine Speed^A

8" x 10" prints from 1:18 sec to 6:25 – Normal is 2:00
11" x 14" prints from 2:27 to 10:55 – Normal is 3:25
16" x 20" prints from 4:07 to 18:57 – Normal is 6:07

Acoustic Noise Level

Approximately 50 dB(A) according to ISO 7779

Printer Language/Drivers

Epson ESC/P®2 raster photographic drivers standard

Optional PANTONE licensed and SWOP certified PostScript
Language Level 3 Compatible RIP by ColorBurst (included
only with ColorBurst Edition bundle)

Supported by most leading third-party RIPs and workflows

Operating Systems Supported

Macintosh Tiger 10.4.9 or higher (universal binary)
Leopard 10.5 or higher (16-bit)
Windows Vista and XP (both 32 and 64-bit supported)

Printer Interfaces

Includes as standard one hi-speed USB 2.0 (1.1 compatible)
and one Ethernet port (10/100Base-T)

Dimensions

33"(W) x 14"(H) x 30"(D)
Printer weight: 89 lb

BorderFree Printing

Complete borderless printing on the following roll media sizes:
8.25", 8.5", 10", 12", 13", 14", 16", 17"

Top and bottom edges can be automatically cut to any length
when printing on roll media

Safety Approval

Safety standards UL1950, CSA 22.2 950 FDA
EMI FCC Part 15 subpart B class B,
CSA C108.8 class B
AS/NZS 3548 class B

Printable Area

Maximum paper width 17"
Left and right margins 0 to 3 mm each (0.24" total)
Top and bottom margins 0 to 25 mm each
Maximum printable width 17.16" (full bleed 17" width)
Maximum printable length Limited by application, OS, and
driver/RIP used

Media Handling

Roll media size Single roll up to 17" width
Roll media length Up to 132' (limited by core dia.)
Cut-sheet input tray size Up to 17" x 22"
Cut-sheet media input Up to 250 sheet tray, top and
rear manual feed slots
Media core compatibility Handles both 2" and 3" cored media
Max. roll media diameter 4" (2" core) or 6" (3" core)
Weight 12 lb bond up to 1.5 mm
posterboard
Built-in media cutter Automatic and manual cutting

Epson Intelligent Ink Cartridges^B

Cartridge fill volume 110 ml or 220 ml
each color x 8 cartridges total
Ink cartridge shelf life 2 years from printed production
(recommended) date or 6 months after open

Line Accuracy

+ or - 0.2% of specified page length

Lightfastness Ratings^C

Epson UltraChrome K3 Ink Color: Up to 200 years
B&W: Over 200 years

Environmental Characteristics

Temperature
Operating 50° to 95°F (10° to 35°C)
Storage -4° to 104°F (-20° to 40°C)
Relative humidity
Operating 20 to 80%
Recommended Storage 40 to 50%
5 to 85% (no condensation)

Engine Reliability

Cutter life ~2,000 cuts (coated media)
Maintenance parts Pump unit, flushing box,
head cleaner, cap assembly
First major maintenance interval (number of 8" x 10" prints)
720 x 720 dpi 45,000 prints
1440 x 720 dpi 29,500 prints
2880 x 1440 dpi 15,200 prints

Note: when printing in uni-directional mode the above
numbers are reduced by half

Electrical Requirements

Voltage AC 110 – 240 V
Frequency 50 to 60 Hz
Current 1.0 A/110 – 120 V
Power consumption
Operating Approx. 55 W or less
Standby Less than 5 W
Power Off Less than 1 W
ENERGY STAR compliant

Product/Accessories

Product/Accessories	Part Numbers
Epson Stylus Pro 4880 Printer	SP4880K3
Epson Stylus Pro 4880 ColorBurst Edition Includes ColorBurst® RIP	SP4880CB
Epson Stylus Pro 4880 Portrait Edition Includes ExpressDigital® Darkroom™ Core Edition	SP4880EX
Epson Stylus Pro 4880 Printer Cabinet Stand	C4800STAND
Epson Stylus Pro 4880 TUMI® Printer Cover	C4800TUMI
Additional One-year Epson Preferred Plus Service	EPP48B1
Additional Two-year Epson Preferred Plus Service	EPP48B2
Additional Media Spindle (Normal Tension) – 2" / 3"	C12C811171
Additional Media Spindle (High Tension) – 2" / 3"	C12C811191
Replacement Printer Cutter Blade	C12C815291
Replacement Ink Maintenance Tank	C12C890191

Epson UltraChrome K3 Ink	(110 ml)	(220 ml)
Photo Black ink cartridge	T605100	T606100
Cyan ink cartridge	T605200	T606200
Vivid Magenta ink cartridge	T605300	T606300
Yellow ink cartridge	T605400	T606400
Light Cyan ink cartridge	T605500	T606500
Vivid Light Magenta ink cartridge	T605600	T606600
Light Black ink cartridge	T605700	T606700
Light Light Black ink cartridge	T605900	T606900
Matte Black ink cartridge	T613800	T614800

^A Based upon print engine speed only. Total throughput times depend upon front-end RIP, file size, printer resolution, ink coverage, networking, etc. Normal Mode based on SuperFine - 1440 dpi HS.

^B Cartridge yields vary considerably based on images printed, print settings, paper type, frequency of use and temperature. For print quality, a variable amount of ink remains in the cartridge after the "Replace Cartridge" indicator comes on. The printer ships with full cartridges and part of the ink from the first cartridge is used for priming the printer. Printer ships with 110 ml cartridges. Photo Black cartridge included, Matte Black must be purchased separately. See www.epson.com/cartridgeinfo for more information about cartridges.

^C Ink lightfastness rating based on accelerated testing of prints on specialty media, displayed indoors, under glass. Actual print stability will vary according to media, printed image, display conditions, light intensity, humidity and atmospheric conditions. Epson does not guarantee longevity of prints. For maximum print life, display all prints under glass or lamination or properly store them. Visit www.wilhelm-research.com for the latest information.

EPSON
EXCEED YOUR VISION



Epson America, Inc.: 3840 Kilroy Airport Way, Long Beach, CA 90806
Epson Canada, Ltd.: 3771 Victoria Park Avenue, Toronto, Ontario M1W 3Z5
Internet website: www.proimaging.epson.com

Specifications and terms are subject to change without notice. Epson, Epson Stylus, MicroPiezo and Epson ESC/P are registered trademarks and Epson Exceed Your Vision, Epson UltraChrome K3, AMC and Microcrystal Encapsulation are trademarks of Seiko Epson Corporation. BorderFree and UltraSmooth are registered trademarks, Epson PrecisionColor and AccuPhoto are trademarks and Epson Preferred is a service mark of Epson America, Inc. All other product and brand names are trademarks and/or registered trademarks of their respective companies. Epson disclaims any and all rights in these marks.
Copyright 2007, Epson America, Inc. CPD 23797 8/07