

Calculation Example / Exemples de calculs / Ejemplos de cálculo

CALCULATION / CALCUL	OPERATION / FONCTIONNEMENT	DISPLAY / AFFICHEUR
▼ Mixed / Mixtes	5/4 \downarrow	123456789012
ON CA (TS-1200TG / HS-1000TG)	()	(0.)
ON CA (HS-20TG)	()	(0.)
140-35+22=127	140 \ominus 35 \oplus 22 \ominus	(127.00)
2x2-3=6	2 \times 2 \ominus 3 \ominus	(6.00)
-7x9 \div -63	7 \times 9 \div 99 \ominus	(-63.00)
(2+4) \div 3x8.1=16.2	2 \oplus 4 \div 3 \times 8.1 \times	(16.20)
8 \div 0.1 \ominus	8 \div 0.1 \ominus	(16.20)
▼ Constant / Constantes		
2+3=5	2 \oplus 3 \ominus	(5.00)
4+3=7	4 \oplus 3 \ominus	(7.00)
1-2=-1	1 \ominus 2 \ominus	(-1.00)
2-2=0	2 \ominus 2 \ominus	(0.00)
2x3=6	2 \times 3 \ominus	(6.00)
2x4=8	2 \times 4 \ominus	(8.00)
6 \div 3=2	6 \div 3 \ominus	(2.00)
9 \div 3=3	9 \div 3 \ominus	(3.00)
▼ Power, Fraction / Puissance, fractions		
3 ⁴ =81	3 \times \ominus \ominus \ominus \ominus	(81.00)
1/5=0.2	1 \div 5 \ominus	(0.20)
1/(2x3+4)=0.1	1 \div (2 \times 3 \oplus 4) \ominus	(0.10)
▼ Square Root / Racines carrées		
$\sqrt{3} = 1.73205080756$	3 $\sqrt{\square}$ (TS-1200TG / HS-20TG)	(1.73205080756)
$= 1.732050807$	(HS-1000TG)	(1.732050807)
▼ Add Mode / Mode addition		
\$14.90+\$0.35-\$1.45	1490 \oplus 35 \ominus	(13.80)
=13.80	145 \ominus	(13.80)
▼ Floating Calculation / Calcul flottant		
8 \div 3x3.7+9	8 \div 3 \times 3.7 \oplus 9	(18.866666666)
=18.866666666	9 \ominus (TS-1200TG / HS-20TG)	(18.866666666)
=18.866666666	(HS-1000TG)	(18.866666666)
▼ Reciprocal Calculation / Calcul réciproque		
1/7=0.14285714285	1 \div 7 \ominus	(0.1429)

CALCULATION / CALCUL	OPERATION / FONCTIONNEMENT	DISPLAY / AFFICHEUR
$\frac{12}{3} = 4$	$\frac{12}{3} = 4$	123456789012
▼ Round-off / Arrondissement	5/4 \downarrow	
11 \div 3=3.6666666666	11 \div 3 \ominus	(3.6667)
▼ Round-down / Arrondissement au chiffre inférieur	5/4 \downarrow	
11 \div 3=3.6666666666	11 \div 3 \ominus	(3.6666)
▼ Percentage / Pourcentages		
1200x $\frac{12}{100}$ =144	1200 \times 12 \div 100	(144.00)
1200x $\frac{15}{100}$ =180	15 \div 100 \times 1200	(180.00)
1200+(1200x20%)=1,440	1200 \oplus 20 \div 100 \times 1200	(1'440.00)
1200-(1200x20%)=960	1200 \ominus 20 \div 100 \times 1200	(960.00)
▼ Memory / Mémoire	CA	(0.)
3x4= 12	3 \times 4 \ominus MA	(M 12.00)
-) 6 \div 0.2= 30	6 \div 0.2 \ominus MA	(M 30.00)
-18	18 \ominus MA	(M -18.00)
+)	200 \ominus MA	(M 200.00)
182	182 \ominus MA (Recall Memory / Mémoire de rappel)	(M 182.00)
	182 \ominus MA (Clear Memory / Mémoire d'effacement)	(182.00)
▼ Grand total / Total général	CA	(0.)
30x40=1,200	30 \times 40 \ominus	(GT 1'200.00)
50x60=3,000	50 \times 60 \ominus	(GT 3'000.00)
+)	25 \times 30 \ominus	(GT 750.00)
4,950	GT	(GT 4'950.00)
+)	235 \times 35 \ominus	(GT 8'225.00)
13,175	GT (Grand Total / Total général)	(GT 13'175.00)
	GT (Clear Grand Total / Effacement du total général)	(13'175.00)
Tax Rate Set / Calcul des taux de taxe	CA SET TAX+	(TAX% 0.)
Tax Rate / Taux de taxe = 5%	5 SET TAX+	(TAX% 5.)
Add the Tax Amount / Addition du montant de la taxe		
Price \$2,000 without tax / Prix 2 000 \$ sans taxe Selling price with tax ? / Prix de vente avec taxe ? (\$2,100 / 2 100 \$) Tax = (\$100) / Taxe = (100 \$)	2000	(2'000.)
	TAX+	(TAX+ 2'100.00)
	TAX+	(TAX 100.00)
Deduct Tax Amount / Soustraction du montant de la taxe		
Selling price \$3,150 with tax / Prix de vente 3 150 \$ avec taxe Price without tax? (\$3,000) / Prix sans taxe ? (3 000 \$)	3150	(3'150.)
	TAX-	(TAX- 3'000.00)
	TAX-	(TAX 150.00)
Tax amount? = (\$150) / Montant de la taxe ? = (150 \$)	TAX-	(TAX% 5.)
Recall Tax Rate / Rappel des taux de taxe	CA RECALL TAX-	

CALCULATION / CALCUL	OPERATION / FONCTIONNEMENT	DISPLAY / AFFICHEUR
$\frac{12}{3} = 4$	$\frac{12}{3} = 4$	123456789012
▼ Overflow / Dépassement de capacité		
1) 123456789x78900	(TS-1200TG / HS-20TG) 123456789 \times 78900 \ominus	(E 9.74074065210)
=9740740652100	(HS-1000TG)	(E 974.0740652)
(HS-1000TG: ERROR / ERREUR) \rightarrow T	\square (TS-1200TG / HS-20TG)	(9.74074065210)
(TS-1200TG / HS-20TG: ERROR / ERREUR)	\square (HS-1000TG)	(974.0740652)
2) 9999999999999	(Add to Memory / Ajouter en mémoire)	(M 999'999'999'999.)
123	(Add to Memory / Ajouter en mémoire)	(M 1.00000000012)
	\square (TS-1200TG / HS-20TG)	(M 1.00000000012)
	\square (HS-1000TG)	(M 1.000000012)
	CA	(0.)
3) 6 \div 0=0	6 \div 0 \ominus	(E 0.)
(ERROR / ERREUR)	\square	(0.)

BATTERY

Battery: 1 Lithium battery (Type: CR2032)

Replace battery

After replace the battery, press the [RESET] button.
After resetting be sure to set the tax rate again.

CAUTION: Risk of explosion if battery is replaced by
an incorrect type dispose of used batteries
according to the instruction.

ENGLISH

PILE

Pile : 1 pile au lithium (Type : CR2032)

Remplacer la pile

Après avoir remplacé la pile, appuyer sur la touche
(RESET). Après le rajustement, s'assurer de régler de
nouveau le taux de taxe.

ATTENTION: Il y a risque d'explosion si la pile est
remplacée par le mauvais type de pile.
Mettre au rebut les piles conformément
aux directives.

FRANÇAIS

PILA

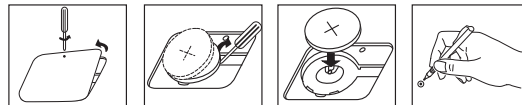
Pila : 1 pila de litio (Type : CR2032)

Substituir la pila

Después de substituir la pila, presionan [RESET] el
botón. Después de reajustar estar seguro de fijar la
imposición fiscal otra vez.

PRECAUCIÓN: Existe un riesgo de explosión si se
utiliza un tipo de pila incorrecto. Siga
las instrucciones para desechar las
pilas.

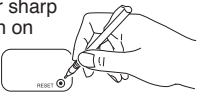
ESPAÑOL



POWER SUPPLY

This calculator comes with a dual power source solar cell and lithium battery. The duration of a lithium battery depends entirely on individual usage.

■ Electromagnetic interference or electrostatic discharge may cause the display to malfunction or the contents of the memory to be lost or altered. Should this occur, use the tip of a ball point pen (or similar sharp object) to press the [RESET] button on the back of the calculator. After resetting, be sure to set the tax rate again.



DECIMAL POINT SELECTOR SWITCH

- Used for designating the decimal point position (4 3 2 1 0) for calculated results.
 - Addition and subtraction functions are performed with an automatic 2-digit decimal. It is convenient for currency calculations.
 - All effective numbers up to 10 digits (HS-1000TG) / 12 digits (TS-1200TG / HS-20TG) are displayed.

ROUNDING SWITCH

5/4 \downarrow - Used for round-off [5/4], or round-down [\downarrow] to the pre-selected decimal digits in the result.

GRAND TOTAL FUNCTION

\square - The totals are accumulated in the grand total memory. Press \square to get the grand total.
Press \square successively to clear the grand total memory.

TAX CALCULATION

\square SET TAX+ - **Store the Tax Rate** - Press \square SET TAX+ and enter the tax rate figure, then press \square SET TAX+ to store.
 \square RECALL TAX- - **Recall the Tax Rate** - Press \square RECALL TAX- to recall the current tax rate.
 \square TAX+ - **Add Tax Key** - Used for adding the tax amount to the displayed figure.
 \square TAX- - **Deduct Tax Key** - Used for deducting the tax amount from the displayed figure.

OVERFLOW FUNCTION

In the following cases, when "E" is displayed, the keyboard is electronically locked, and further operation is impossible. Press \square to clear the overflow.

The overflow function occurs when:

- The result or the memory content exceeds 10 digits (HS-1000TG) / 12 digits (TS-1200TG / HS-20TG) to the left of the decimal point.
- Dividing by "0".

SPECIFICATION

Power Source: Solar cell and Lithium battery (CR2032 x 1)

Automatic power-off: approx. **7 minutes**

Usable Temperature : 0°C to 40°C (32°F to 104°F)

Dimensions:

TS-1200TG: 188mm (L) x 133mm (W) x 29mm (H)
7-13/32" (L) x 5-15/64" (W) x 1-9/64" (H)
HS-1000TG: 170mm (L) x 118mm (W) x 35mm (H)
6-45/64" (L) x 4-41/64" (W) x 1-3/8" (H)
HS-20TG: 164mm (L) x 105mm (W) x 33mm (H)
6-29/64" (L) x 4-9/64" (W) x 1-19/64" (H)

Weight: TS-1200TG: 241g (8.5 oz)

HS-1000TG: 172g (6.1 oz)

HS-20TG: 152g (5.36 oz)

(Subject to change without notice)

For CA, USA only

Included battery contains perchlorate material - special handling may apply.

See <http://www.dts.ca.gov/hazardouswaste/perchlorate/> for detail.

