



**We love that you are rocking JLab!  
We take pride in our products and fully stand behind them.**

JLAB  
EPIC MINI  
KEYBOARD



**YOUR WARRANTY**

All warranty claims are subject to JLab authorization and at our sole discretion. Retain your proof of purchase to ensure warranty coverage.



**CONTACT US**

Reach out to us at [support@jlab.com](mailto:support@jlab.com) or visit [jlab.com/contact](http://jlab.com/contact)

**REGISTER TODAY**

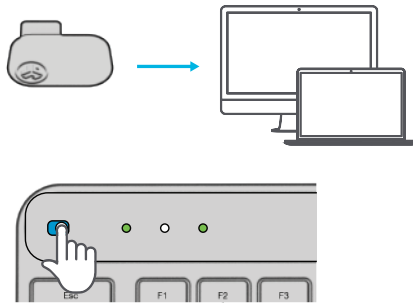
[jlab.com/register](http://jlab.com/register)

Product updates | How-to tips  
FAQs & more

**1 CONNECT WITH DONGLE**

**Install 2.4G USB dongle and switch keyboard on**  
JLab Epic Mini Keyboard will auto connect

If connection is unsuccessful, press and hold 2.4 until button flashes quickly. Unplug and re-plug dongle into computer.



**Have a JLab Epic or JBuds Mouse?**  
Scan the QR code to learn how to pair both your devices with just one dongle.

**2 CONNECT WITH BLUETOOTH**

**Press and hold  $\mathbb{B}$ 1 or  $\mathbb{B}$ 2 for Bluetooth pairing**  
LED will blink in pairing mode

**Press and hold CONNECT**

Select "JLab Epic Mini Keyboard" in device settings



**3 KEYS**

**100%-20%** (Green LED icon)  
**Less than 20%** (Red LED icon)

**USB-C Charge Input**

**Fn + Esc:** Fn lock On/Off

**Fn + Q / W / E:** Switch Mac / Windows / Android keys layout

**Fn + F1-F12:** Shortcut keys (see Shortcut Keys list)

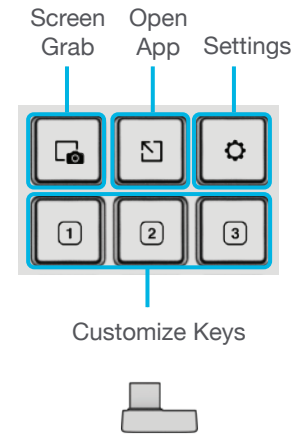
**MEDIA DIAL**  
Volume +/- : Rotate  
Play/Pause: Single press  
Track Forward: Double press  
Track Back: Press and hold

**Switch Connection:** Quick press  
**Pairing Mode:** Press and hold

**Keys:** Caps Lock, Connection Indicator, Battery Indicator, Esc, F1-F12, Delete, Wi-Fi 2.4, Bluetooth 1, Bluetooth 2, Backspace, Tab, Q (Mac), W (Android), E (Windows)

# SHORTCUT KEYS

Fn +	MAC	PC	Android
Esc	FN Lock	FN Lock	FN Lock
F1	Brightness -	Brightness -	Brightness -
F2	Brightness +	Brightness +	Brightness +
F3	Task Control	Task Control	N/A
F4	Show Applications	Notification Center	N/A
F5	Search	Search	Search
F6	Backlit -	Backlit -	Backlit -
F7	Backlit +	Backlit +	Backlit +
F8	Track Back	Track Back	Track Back
F9	Track Forward	Track Forward	Track Forward
F10	Mute	Mute	Mute
F11	Screenshot	Screenshot	N/A
F12	N/A	Calculator	N/A



**Customize the Epic Mini Keyboard with USB dongle + JLab Work App**  
[jlab.com/software](https://jlab.com/software)



[Shop products](#) | [Product alerts](#) | [Burn-in your headphones](#)

JLab Audio + Burn-in Tool

