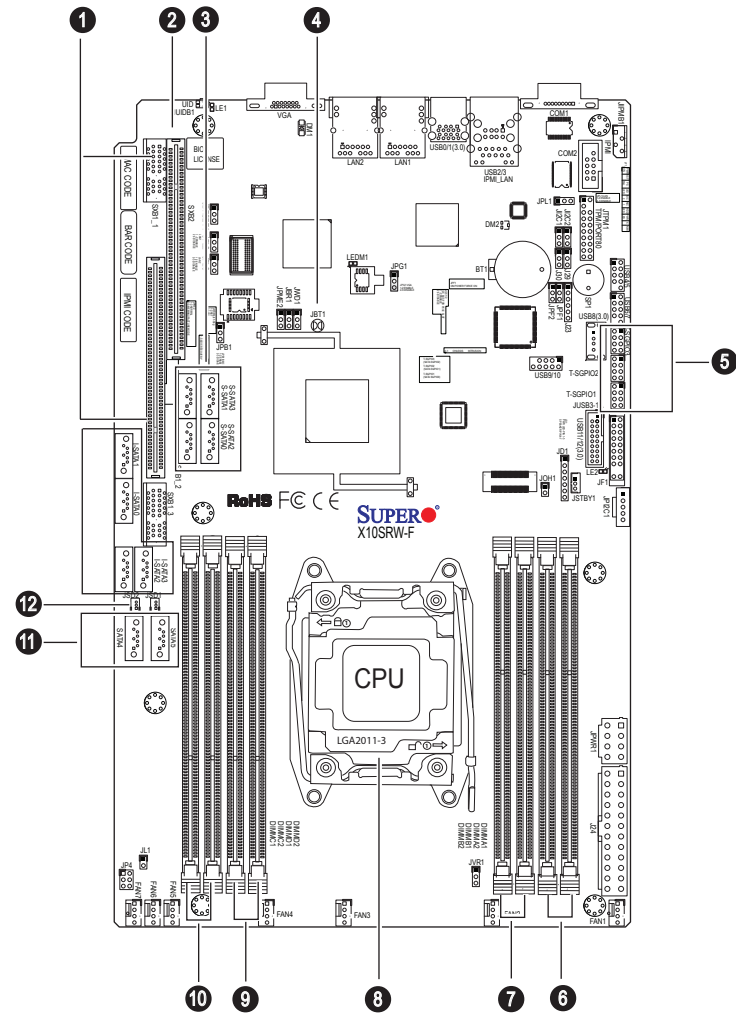


Board Layout



No.	Description
1	SXB1A/SXB1B/SXB1C: SMC-Proprietary WIO_L(Left) Add-On Card slots
2	SXB2: SMC-Proprietary WIO_R (Right) Add_On card slot
3	S-SATA 0~ 3: S-SATA Ports 0~3 (6Gb/sec)
4	JBT1 = CMOS Reset
5	T-SGPIO 1/2/3: Serial_Link General Purpose I/O Headers 1/2/3 for SATA Connection
6	DIMMA1 (Blue)/DIMMA2 slot
7	DIMMB1 (Blue)/DIMMB2 slot
8	CPU1
9	DIMMD1(Blue)/DIMMD2 slot
10	DIMMC1(Blue)/DIMMC2 slot
11	SATA 4/5: SATA DOM (Disk_On_Module) Ports 4/5
12	JSD1/JSD2: SATA DOM (Device_On_Module) Power Connectors
13	I-SATA 0~3: (Intel PCH) Serial ATA (SATA 3.0) Ports 0~3

MEMORY

Memory Population Guidelines

Please follow the table below when populating the X10SRW-F.

DDR4 Unbuffered ECC (UDIMM) Memory				
DIMM Slots per Channel	DIMMs Populated per Channel	DIMM Type	POR Speeds	Ranks per DIMM (any combination)
2	1	Unbuffered DDR4	1333, 1600	Single Rank, Dual Rank
2	2	Unbuffered DDR4	1333, 1600	Single Rank, Dual Rank

Populating RDIMM Memory Modules

2 Slots per Channel RDIMM Population Configurations				
Configuration Number	POR Speed	1-Node or 2-Node	DIMM1	DIMM0
1	DDR4-2133, 1866, 1600	1N	Empty	Single-rank
2	DDR4-2133, 1866, 1600	1N	Empty	Dual-rank
3	DDR4-1866, 1600	1N	Single-rank	Single-rank
4	DDR4-1866, 1600	1N	Single-rank	Dual-rank
5	DDR4-1866, 1600	1N	Dual-rank	Dual-rank

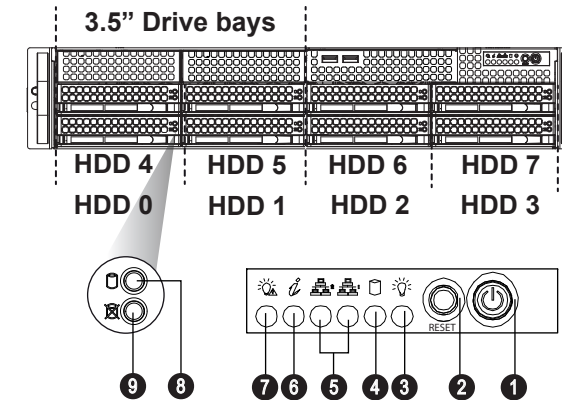
Populating LRDIMM Memory Modules

2 Slots per Channel LRDIMM Population Configurations				
Configuration Number	POR Speed	1-Node or 2-Node	DIMM1	DIMM0
1	DDR4-2133, 1866, 1600	1N	Empty	Quad-rank+
2	DDR4-1866, 1600	1N	Quad-rank+	Quad-rank+

Beep Codes

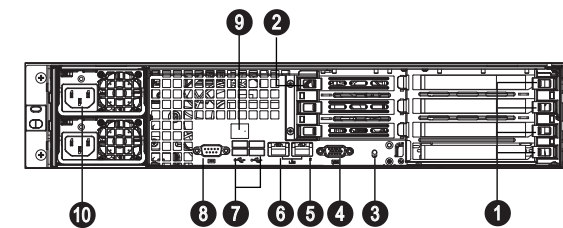
BIOS Error Beep Codes		
Beep Code/LED	Error Message	Description
1 beep	Refresh	Circuits have been reset. (Ready to power up)
5 short beeps + 1 long beep	Memory error	No memory detected in the system
8 beeps	Display memory read/write error	Video adapter missing or with faulty memory
OH LED On	System OH	System Overheat

Front view & Interface



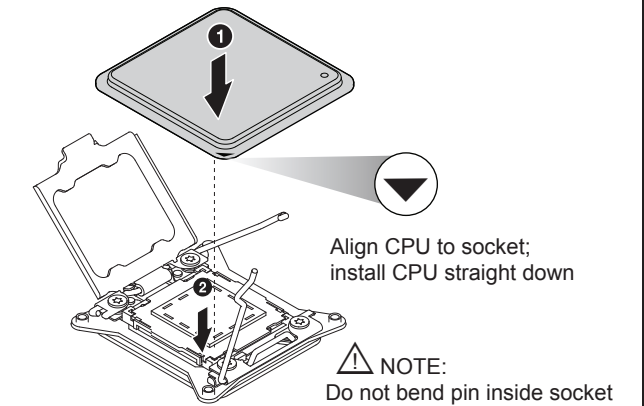
No.	Description
1	Power Button
2	Reset Button
3	Power LED
4	Device Activity LED
5	LAN1 LED & LAN2 LED
6	Information LED
7	Power Fail LED
8	Hard Drive Signal
9	Hard Drive Fail

Rear View

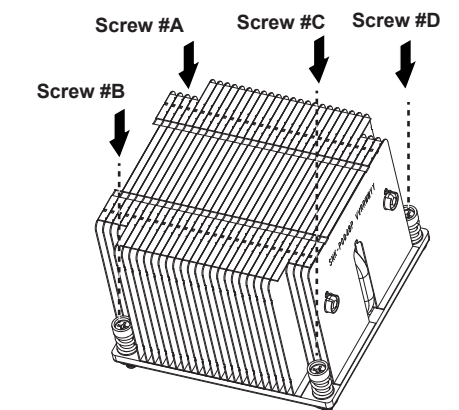


No.	Description
1	PCI-E 3.0x16 Expansion Slot (FH, FL)
2	PCI-E 3.0x8 Expansion Slot (LP)
3	UID Button
4	VGA Port
5	GbE LAN2 Port
6	GbE LAN1 Port
7	2x USB2.0 & 2xUSB 3.0 Ports
8	Serial Port
9	Dedicated LAN for IPMI
10	Redundant Power Supply Modules

CPU Installation



Heatsink Installation



- Place heatsink on top of installed CPU
- Line up the four screws to socket
- Push down heatsink and screw down as shown (cross pattern, in order: A, C, B, D)
- NOTE: Only use 6-8 lb/f of torque; otherwise, hand-tighten each screw, to avoid damaging the system

Caution

SAFETY INFORMATION
 IMPORTANT: See installation instructions and safety warning before connecting system to power supply.
http://www.supermicro.com/about/policies/safety_information.cfm

WARNING:
 To reduce risk of electric shock/damage to equipment, disconnect power from server by disconnecting all power cords from electrical outlets.
 If any CPU socket empty, install protective plastic CPU cap

CAUTION:
 Always be sure all power supplies for this system have the same power output. If mixed power supplies are installed, the system will not operate.

For more information go to :
<http://www.supermicro.com/support>

