



# Using HPE RDX with Windows Backup

This guide shows step-by-step instructions on how to configure HPE RDX drives in a fixed disk mode, which in turn will allow RDX to be used with a Windows Backup solution.

The built-in Windows Backup software included with current Windows operating systems is a great way to capture a copy of your system and data.

HPE RDX USB 3.0 drives have the ability to set a compatibility mode for use with Windows Backup. With this (fixed) mode HPE RDX can be seen by the Windows operating system as a local fixed disk in order for Windows Backup to target HPE RDX.

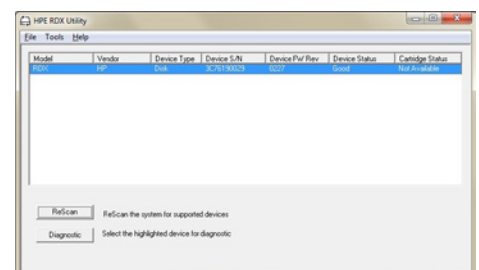
Use the HPE RDX Utility to change the device mode and to verify the drive firmware version. Download the latest versions of the HPE RDX utility and drive firmware from [hpe.com/support/rdx](http://hpe.com/support/rdx)

Start the HPE RDX Utility and confirm:

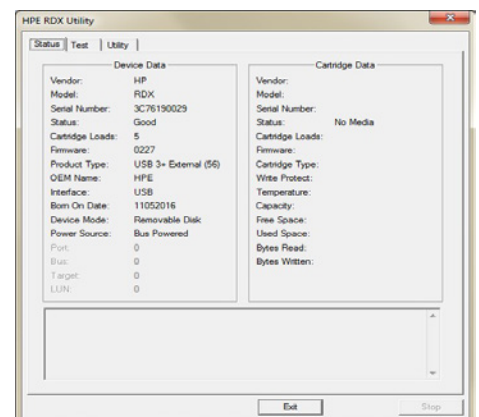
- The Utility Installer version is 1.54 or later (via **Help, About Utility...**)
- The drive firmware is 2.10 or later (in the example below, version 2.27 has been installed. **See Device FW Rev**).

## Step 1: Click on **Diagnostic**.

If there is a RDX cartridge loaded inside the drive, eject it.

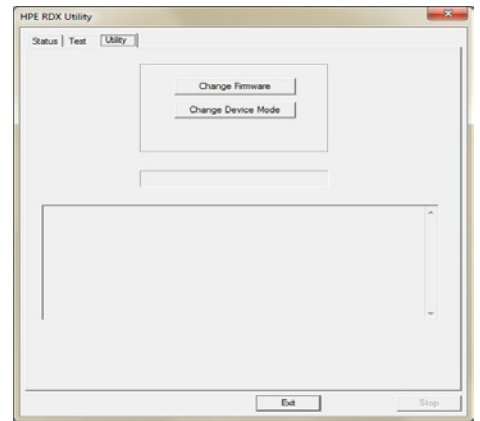


## Step 2: Select the **Utility** tab.

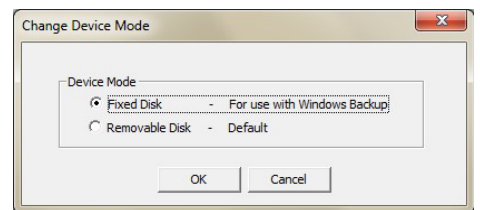


**Step 3:** The **Change Firmware** button can be used to update the firmware if necessary. The latest firmware can be downloaded from [hpe.com/support/rdx](http://hpe.com/support/rdx)

Otherwise, click on **Change Device Mode**.

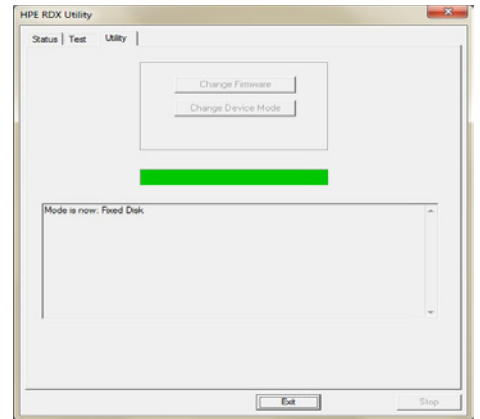


**Step 4:** Choose **Fixed Disk** and click **OK**.




**Step 5:** Check the status message in the lower part of the window, and confirm the **Mode is now: Fixed Disk**.

Click **Exit** and close the RDX utility window.



To run Windows Backup, select **Backup and Restore** (Windows 7 and Windows 10) from the Windows Control Panel. For Windows Server 2012 run **Windows Server Backup**. Start the backup application and follow the steps in the wizard.

For additional support, detailed instructions regarding how to configure Windows Backup are available from the Microsoft Support Site at [www.support.microsoft.com](http://www.support.microsoft.com) (search for **Backup and Restore** or **Windows Server Backup** as appropriate).

 Make the right purchase decision. Click here to chat with our presales specialists.



Sign up for updates

Learn more at [hpe.com/storage/rdx](http://hpe.com/storage/rdx)

