

The ScanSnap logo is located in the top left corner, featuring the brand name in white text inside a blue rounded rectangle.

ScanSnap

ScanSnap iX100

A person wearing a red shirt is holding a black ScanSnap iX100 mobile scanner. The scanner is being held in a way that shows its side profile, with the 'ScanSnap' logo visible. The person's hands are visible, and they are holding the scanner over a black leather bag.

**The incredibly fast
completely wireless
battery powered
mobile scanner.**

New ScanSnap Cloud

Scan to the cloud without
a computer or mobile device.

RICOH
imagine. change.

ScanSnap



iOS



iX100, the world's fastest
battery-powered ScanSnap.
Scan a color document
in **5.2 seconds.***



Lightweight

Only 400g (14.1 oz.)

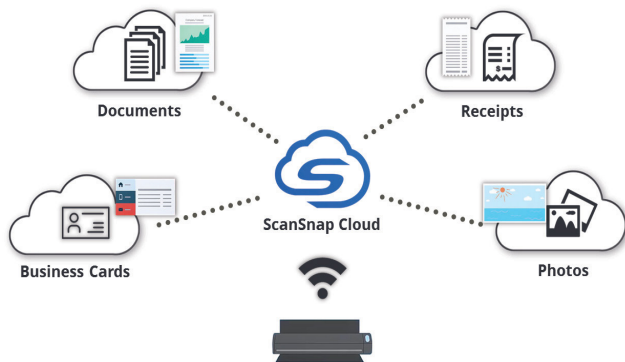
Power on the Move

Rechargeable Lithium Battery.

Wi-Fi and USB Connectivity

Scan wirelessly to your PC, Mac and mobile devices.

**Single-side color A4 document scanned at 300 dpi.*



ScanSnap Cloud

ScanSnap Cloud makes scanning easier than ever before, enabling ScanSnap to scan directly to your favorite cloud service without the need for a computer or mobile device. Simply press the scan button and your scans are automatically separated into documents, receipts, business cards or photos and sent to a predetermined cloud service.

Wireless scanning anywhere, anytime

The ScanSnap iX100 can automatically detect your Wi-Fi network at home, in the office or on the go. With *Direct Connect* mode you can scan wirelessly beyond your network.



Intelligent automated features

Like all ScanSnap scanners the iX100 features a powerful set of automated image processing functions including auto color detection, crop & deskew, and blank page removal.

Built-in GI microprocessor

A dual-core CPU-mounted "GI" processor performs the intelligent image enhancement responsible for great looking images with dramatically faster results and more sophisticated connectivity.

ScanSnap iX100



Easily synchronize documents to the cloud

iX100 provides users a convenient way to send scanned documents directly to your existing Evernote, Dropbox, Google Docs*

Scan there! ScanSnap Folder

Scan to virtually any application or web service that can open, insert or attach a PDF or JPEG file from your Windows® computer.

*Internet connection required. Service fees may apply. **Supported languages: English, Spanish, French, German, Italian, Russian.
Supported currencies: USD (United States Dollar), CAD (Canadian Dollar), GBP (Great Britain Pound), EUR (Euro), RUB (Russian ruble), AUD (Australian dollar)

New features for quick digitization



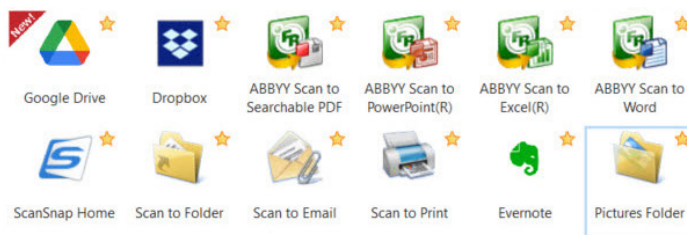
Dual scan

Scan two small sized documents, such as business cards or receipts at the same time. Simply insert documents continuously to reduce your scanning time.

Automatically stitch together a two-page spread

Even charts and diagrams larger than A4

can be scanned. Just fold it in half, scan both sides and the iX100 will automatically stitch it back together.



Quick Menu for Windows® shown

Two selectable paper paths

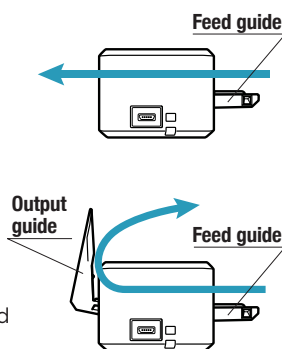
Straight path

Most suitable for scanning post cards, business cards, plastic cards, and thick stock paper.

* This applies to standard ISO 7810 ID-1 card types.

U-turn path

Most suitable for scanning common office paperwork especially in a tight or cluttered environment.



Fast and flexible Quick Menu

The Quick Menu for PC and Mac automatically pops up after scanning to provide you a variety of ways to be immediately productive with your scans. It can be customized to display just your favorites, present a recommendation, and even display custom profiles.

Generate Microsoft® Word, Excel® and PowerPoint® files

ABBYY FineReader for ScanSnap lets you scan and convert paper documents into Word®, Excel® and PowerPoint® files.

Only Microsoft® Word and Excel® are available for Mac OS.
Generated images and text may vary from the original.

Continuous Document Feeding (CDF)

The Continuous Document Feeding function allows you to insert pages one after another by detecting when a sheet enters and exit



Set your document face-up into the iX100 and push the Scan button.



The iX100 proceeds to scan the front side.



The page exits from the top of the scanner when paper path is set to U-turn.



Re-insert the page *without pressing the Scan button* to scan the other side.



After you finish scanning, press the Scan button to save file.

■ General Specifications

Description		ScanSnap iX100
Scanner type		CDF (Continuous Document Feeding), Simplex sheetfeed two-way paper path (Straight path, U-turn path)
Scanning modes		Color, grayscale, monochrome, automatic (color / grayscale / monochrome detection)
Image sensor		CIS (Contact Image Sensor) x 1
Light source		3 Color LED (Red / Green / Blue)
Optical resolution		600 dpi
Scanning speed (A4 portrait) ^{*1}	Auto mode (default) ^{*2}	5.2 seconds / page
	Normal mode (150 dpi)	
	Better mode (200 dpi)	
	Best mode (300 dpi)	
	Excellent mode (600 dpi)	20.4 seconds / page
Document size ^{*3}	Normal mode	A4, A5, A6, B5, B6, Business card, Post card, Letter, Legal and Custom sizes (Max: 216 x 360 mm (8.5 x 14.17 in.), Min: 25.4 x 25.4 mm (1 x 1 in.)) / Automatically recognizes document size
	Normal mode with Carrier sheet	Use of a carrier sheet permits the scanning of A3, B4, double letter and photographs as well as the document sizes that are listed above.
	Long paper scanning ^{*4}	Max: 216 x 863 mm (8.5 x 34 in.) (300 dpi or less)
Paper weight (Thickness)		●52.3 to 209.3 g/m ² , or 14 to 56 lb (Straight path) ●52.3 to 80 g/m ² , or 14 to 20 lb (U-turn path) ●Card Portrait or Landscape (Straight path) Non-embossed: 0.76 mm or less Embossed: 0.76 + 0.48 mm (ISO7810 Conforming)
Paper setting		Front side up
Interface ^{*5}		USB 2.0 (USB 1.1 compatible)
Power source		Li-ion Battery (3.7 V / 720 mAh)
Power requirement		5 V / 0.5 A (x 1port)
Power consumption ^{*6}		During operation: 4.7 W or less During sleep mode: 2.2 W or less During Auto Standby (OFF) mode: Less than 0.5 W
Operation environment		Temperature: 5 to 35 °C (41 to 95 °F) Relative humidity: 20 to 80% (Non-condensing)
Dimensions (W x D x H) ^{*7}		273 x 475 x 36 mm (10.74 x 1.87 x 1.42 in.)
Device weight		400 g (0.88 lb)
Environmental compliance		ENERGY STAR [®] / RoHS
Multifeed detection		None
Driver		ScanSnap specific driver ●Windows [®] : Does not support TWAIN / ISIS [™] ●macOS: Does not support TWAIN

^{*1} Scanning speeds may vary due to the system environment. For details, please visit our website at: <https://www.pfu.ricoh.com/global/scanners/scansnap/>. ^{*2} Documents measuring approximately 148 mm in length or less are scanned in "Best mode", while other documents are scanned in "Better mode". ^{*3} Automatically stitch a two-page spread when scanning a folded A3, B4 or Double letter size document one side at a time. The image is automatically stitched only if texts or diagrams cover across the two-page spread. ^{*4} The iX100 is capable of scanning documents that exceed A4 size in length. This function is available for all modes except for "Excellent mode". ^{*5} Computer with USB 3.0 will work as USB 2.0 guaranteed only with USB cable provided with product. ^{*6} When operating with battery. ^{*7} When chuter is closed.

■ Software

Windows [®]	macOS
ScanSnap Home ^{*1}	
ABBYY FineReader for ScanSnap [™]	

^{*1} ScanSnap Home installation requires a computer and Internet. Activation is also necessary for software use. Please visit the company website for download information. <https://www.pfu.ricoh.com/global/scanners/scansnap/g-support/en/>

This scanner is designed to digitize materials that can be reproduced lawfully, in accordance with applicable copyright regulations and other laws. ScanSnap users are responsible for how they use this scanner. It is imperative that ScanSnap users comply with all applicable local rules and laws, including, without limitation, copyright laws when using this scanner.

^{*}ABBYY and FineReader are trademarks of ABBYY Software, Ltd. which may be registered in some jurisdictions. ABBYY[™] FineReader[™] Engine ©ABBYY. OCR by ABBYY. ^{*}Evernote is a registered trademark or trademark of Evernote Corporation. ^{*}Google and Google Drive are registered trademarks or trademarks of Google Inc. ^{*}Intel, Pentium, and Intel Core are trademarks or registered trademarks of Intel Corporation in the United States and other countries. ^{*}ISIS[™] is a registered trademark of Open Text in the United States. ^{*}Mac, macOS, and the Mac logo are trademarks of Apple Inc. ^{*}ScanSnap, the ScanSnap logo and ScanSnap Home are registered trademarks or trademarks of PFU Limited in Japan. ^{*}Other company names and product names are the trademarks or registered trademarks of the respective companies.

■ Included items

● Safety Precautions ● USB cable

■ Consumables

Description	Part number	Remarks
Cleaner F1	PA03950-0352	100 ml bottle Used to clean rollers
Cleaning Wipe	PA03950-0419	1 pack (24 packets) Used to clean rollers

■ ScanSnap iX100 System Requirements

● Windows[®]

Recommended operating systems		Windows [®] 11 (64-bit) Windows [®] 10 (32-bit / 64-bit) ^{*1,2}
Hardware requirements ^{*3}	CPU ^{*4}	Intel [®] or Intel [®] -compatible processors
	Display resolution	1,024 x 768 pixels or higher
	Disk capacity ^{*5,6}	3.8 GB or more of free hard disk space

^{*1} ScanSnap scanners do not run with Windows[®] 11 and 10 ARM-based PCs. ^{*2} Operate Windows in desktop mode. ^{*3} The ScanSnap device may not work if the connected computer does not meet these requirements. ^{*4} Scanning speeds may vary due to the system environment. ^{*5} Indicated disk capacity requirements apply when downloading ScanSnap Home. ^{*6} Microsoft .NET Framework 4.7 or later must be installed. If it is not installed, it is installed with ScanSnap Home. Up to 4.5 GB of disk space is required for the installation. ^{*}Please refer to the ScanSnap website for the latest support information of the driver and applications. Compatibility may differ depending on the software's version. ^{*}The system requirements may change depending on the duration of support and the support policy of the companies that make the software.

● Mac

Recommended operating systems		macOS Catalina 10.15 or later
Hardware requirements ^{*1}	CPU ^{*2}	Intel [®] or Apple M1 / M2 / M3 processors
	Display resolution	1,024 x 768 pixels or higher
	Disk capacity	2.5 GB or more of free hard disk space

^{*1} The ScanSnap device may not work if the connected computer does not meet these requirements. ^{*2} Scanning speeds may vary due to the system environment. ^{*}Please refer to the ScanSnap website for the latest support information of the driver and applications. Compatibility may differ depending on the software's version. ^{*}The system requirements may change depending on the duration of support and the support policy of the companies that make the software.

■ Options

Description	Part number	Remarks
AC adapter	PA03010-6571 USA, Canada & Taiw	The AC adapter may vary depending on the country where you purchased the ScanSnap and the specifications of the ScanSnap.
ScanSnap iX100 Case ^{*1}	PA03688-0001	Intended for ScanSnap iX100
ScanSnap iX100 Soft Case ^{*1}	PA03688-0011	
ScanSnap Carrier Sheets ^{*2}	PA03360-0013	5 Carrier Sheets Intended for ScanSnap iX1300, iX1600, iX1400, iX100

^{*1} This product has been especially designed for storing and carrying ScanSnap iX100. Please note that this product is not guaranteed to withstand damage by excessive shock or external pressure. ^{*2} Although ScanSnap Carrier Sheets have a listed lifespan of 500 scans, the lifespan may vary with usage. ScanSnap Carrier sheets are intended to scan paper documents with weights of 127 g/m² or less. They also support the scanning of folded documents that are as large as 216 x 297 mm.

⚠ Safety Precautions	Be sure to carefully read all safety precautions prior to using this product and use this device as instructed.	Do not place this device in wet, moist, steamy, dusty or oily areas. Using this product under such conditions may result in electrical shock, fire or damage to this product.
----------------------	---	---