

2x Fans. 2x Fun.

ASUS Exclusive Innovations

- **Axial-tech fan design** features a smaller fan hub that facilitates longer blades and a barrier ring that increases downward air pressure.
- **0dB Technology** lets you enjoy light gaming in relative silence.
- **IP5X dust resistance** offers protection from particle ingress for better durability.
- **Auto-Extreme Technology** uses automation to enhance reliability.
- A **protective backplate** secures components during transportation and installation.
- A **144-hour validation program** puts cards through a series of stringent tests to ensure compatibility with the latest games.



Axial-tech Fan Design

A smaller fan hub facilitates longer blades and a barrier ring that increases downward air pressure.



Protective Backplate

A rigid backplate prevents PCB flex and trace damage.



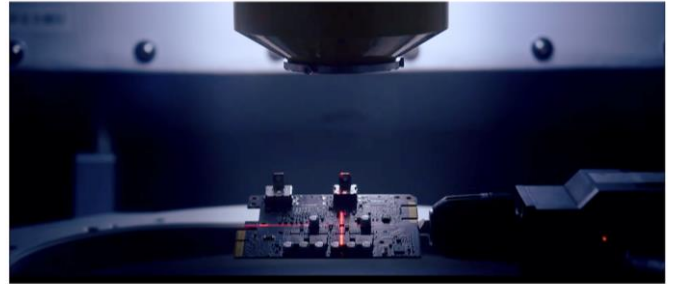
Subtle Lighting

The shroud features a subtle illuminated strip that creates a stylish accent for your build.



Auto-Extreme Technology

An automated manufacturing process that enhances reliability.



Software Suite

Tweak performance with GPU Tweak II, stream games with XSplit Gamecaster, get a better connection to game servers with wtfast, and earn passive income with Quantumcloud.



***Free 1-year premium XSplit Gamecaster.**

***Six-month wtfast premium license* — a USD\$53.95 value — to let user enjoy online gaming that's free from lag, latency and lost packets.**

ASUS Features

OC
Edition

● **OC Edition:**
Up to **1845 MHz** GPU boost clock in OC mode for outstanding gaming experience.

8 ^{GDDR6}
GB
Memory

● **8GB GDDR6 Memory:**
On-board memory for the best gaming experience & the best resolution.

0dB 
Silent Gaming

● **0dB Technology:**
An advanced controller brings fans to a standstill below 60 Celsius, letting you enjoy light gaming in relative silence.

Graphics GPU Features

AMD
RADEON
FreeSync

● **FreeSync:**
Offers stutter-free and tear-free gaming.

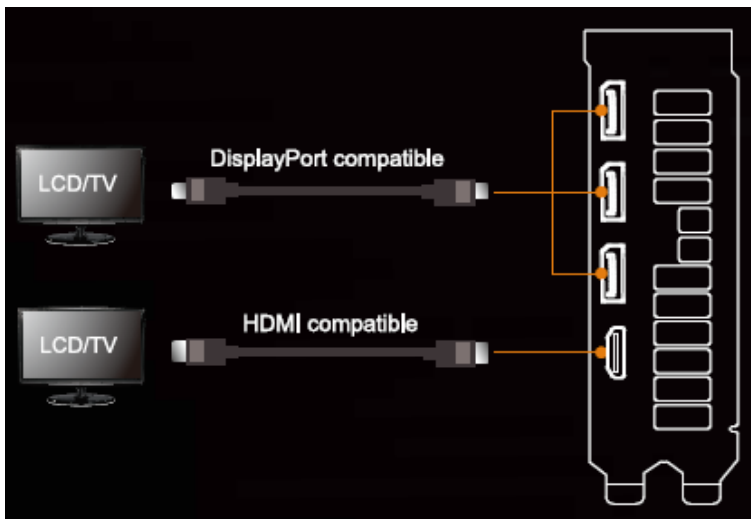
AMD
RADEON
FreeSync2 HDR

● **FreeSync2 HDR:**
Meticulous monitor certification process to ensure exceptional visual experiences.

PCIe
4.0
PCI EXPRESS SUPPORT

● **PCI Express 4.0**
Enables two times the bandwidth compared to PCI Express 3.0. Get ready for the next generation of PC gaming.

I/O Specifications



Hardware Specification

Model	DUAL-RX5500XT-O8G-EVO
Graphics Engine	AMD RADEON™ RX5500 XT
Stream Processors	1408
OpenGL®	OpenGL® 4.6
Engine Clock	OC mode: ~1845 MHz (Boost clock) / 1737 MHz (Game clock*) Gaming mode: ~1845 MHz (Boost clock) / 1733 MHz (Game clock*)
Memory Interface	128 bit
Video Memory	8GB GDDR6
Memory Clock	14000 MHz
Power connectors	1x 8 pin
I/O	1x Native HDMI 2.0b 3x Native DisplayPort 1.4
HDCP compliant	HDMI: HDCP 1.4 or 2.3 DisplayPort: HDCP 1.1 or 2.3
Digital Max Resolution	7680 x 4320
Maximum Display Support	4
NVLink / Crossfire Support	N/A
Recommended PSU	450 W
Bus Standard	PCIe 4.0
Package Contents	1x Speedsetup Manual
Software Bundled	ASUS GPU Tweak II & Driver, please download all software from the support site.
Slot	2.5 slot
Dimension	
Card Size (cm/inch)	24.2 x 13 x 4.9 cm 9.53 x 5.12 x 1.93 inches
Color Box (mm)	405 x 233 x 88.5 mm
Weight	
Single Card (KG)	0.76
Product Weight (with packing) (KG)	1.56
Note	*Game Frequency is the expected GPU clock when running typical gaming applications. Actual individual game clock results may vary. All specifications are subject to change without notice. Please check with your supplier for exact offers. Products may not be available in all markets. If you do not use the latest and current specifications of ASUS products, you shall be liable for all

	loss and damage claimed by third party to ASUS based on false advertising or any other issues caused from using false specifications of ASUS products.
--	--

