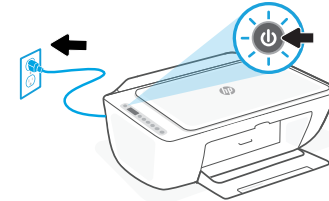
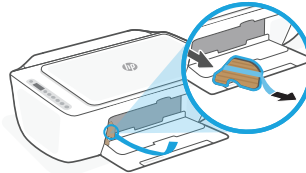
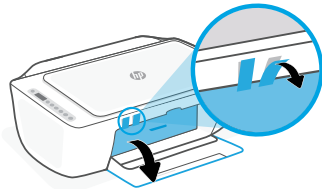




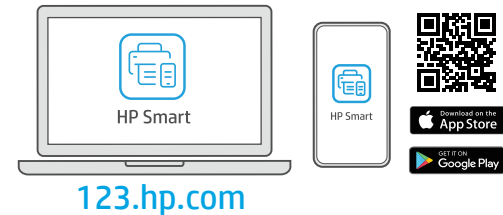
1



- EN** Remove the tape and cardboard. Plug in and turn on the printer.
- FR** Retirez le carton et le ruban adhésif. Branchez et allumez l'imprimante.
- ES** Retire la cinta y el cartón. Enchufe y encienda la impresora.

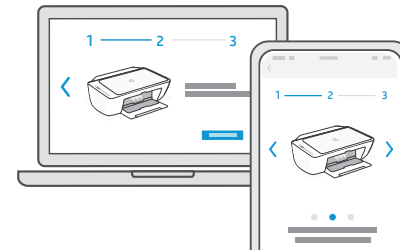
2

- EN** Install HP Smart software from **123.hp.com** or your app store (**required**). Use a computer or mobile device.
- FR** Installez le logiciel HP Smart téléchargé depuis **123.hp.com** ou votre App Store (**obligatoire**). Utilisez un ordinateur ou un appareil mobile.
- ES** Instale el software HP Smart desde **123.hp.com** o su app store (**obligatorio**). Emplee un ordenador o dispositivo móvil.



3

- EN** Open HP Smart and follow the step-by-step instructions in the software to finish setting up the printer.
- FR** Ouvrez HP Smart et suivez les instructions détaillées sur le logiciel pour terminer la configuration de l'imprimante.
- ES** Abra HP Smart y siga las instrucciones paso a paso del software para terminar de configurar la impresora.





Trouble getting started? Find setup information and videos online.

Vous rencontrez des problèmes au démarrage ? Accédez aux informations et vidéos de configuration en ligne.

¿Problemas para empezar? Encuentre información y vídeos de configuración en línea.



hp.com/support/printer-setup



The Apple logo is a trademark of Apple Inc., registered in the U.S. and other countries.
App Store is a service mark of Apple Inc.
Android, Google Play, and the Google Play logo are trademarks of Google Inc.

EN FR ES

Printed in China Imprimé en Chine Impreso en China

© Copyright 2020 HP Development Company, L.P.



26K67-90002