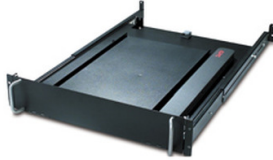


# Product datasheet

Specifications



## 19" Rotating Keyboard Drawer Black

AR8127BLK

### Overview

**Presentation** Pull-out drawer design allows for easy access and out of the way storage for all standard 19 inch keyboards. Rotating keyboard tray permits the user to swivel into working position.

**Lead time** Usually in Stock

### Main

**number of rack unit** 2U

**Number of cables** 1

**Provided equipment** Cable management clips  
Installation guide  
Keyboard not included  
Mounting hardware  
Mouse pad  
Wrist rest

### Physical

**Colour** Black

**Height** 8.9 cm

**Width** 44.5 cm

**Depth** 71.1 cm

**Net weight** 10.45 kg

**Mounting location** Front

**Mounting preference** Middle

**Mounting mode** Rack-mounted

### Conformance

**Standards** EIA-310D

### Packing Units

**Unit Type of Package 1** PCE

**Number of Units in Package 1** 1

**Package 1 Height** 21.6 cm

**Package 1 Width** 92.7 cm

**Package 1 Length** 64.8 cm

**Package 1 Weight** 16.59 kg

## Logistical informations

---

Country of origin US

## Contractual warranty

---

Warranty 2 years repair or replace

## Sustainability

**Green Premium™ label** is Schneider Electric's commitment to delivering products with best-in-class environmental performance. Green Premium promises compliance with the latest regulations, transparency on environmental impacts, as well as circular and low-CO<sub>2</sub> products.

**Guide to assessing product sustainability** is a white paper that clarifies global eco-label standards and how to interpret environmental declarations.

[Learn more about Green Premium >](#)

[Guide to assess a product's sustainability >](#)



Take-back   Transparency   RoHS/REACH

## Resource performance

 [Take-Back Program Available](#)

---

## Well-being performance

 [Reach Free Of Svhc](#)

---

 [Toxic Heavy Metal Free](#)

---

 [Mercury Free](#)

---

 [Rohs Exemption Information](#)   [Yes](#)

---

## Certifications & Standards

**Reach Regulation**   [REACH Declaration](#)

---

**Eu Rohs Directive**   Pro-active compliance (Product out of EU RoHS legal scope)  
[EU RoHS Declaration](#)

---

**Environmental Disclosure**   [Product Environmental Profile](#)

---

**Circularity Profile**   [End of Life Information](#)

---