

USB Hub

4 Port USB 2.0 Hub

7 Port USB 2.0 Hub

ST4202USB

ST7202USB

Instruction Manual



Actual product may vary from photo

StarTech.com

The Professionals' Source for Hard-to-Find Computer Parts

FCC Compliance Statement

This equipment has been tested and found to comply with the limits for a Class B digital device, pursuant to part 15 of the FCC Rules. These limits are designed to provide reasonable protection against harmful interference in a residential installation. This equipment generates, uses and can radiate radio frequency energy and, if not installed and used in accordance with the instructions, may cause harmful interference to radio communications. However, there is no guarantee that interference will not occur in a particular installation. If this equipment does cause harmful interference to radio or television reception, which can be determined by turning the equipment off and on, the user is encouraged to try to correct the interference by one or more of the following measures:

- Reorient or relocate the receiving antenna.
- Increase the separation between the equipment and receiver.
- Connect the equipment into an outlet on a circuit different from that to which the receiver is connected.
- Consult the dealer or an experienced radio/TV technician for help.

Use of Trademarks, Registered Trademarks, and other Protected Names and Symbols

This manual may make reference to trademarks, registered trademarks, and other protected names and/or symbols of third-party companies not related in any way to StarTech.com. Where they occur these references are for illustrative purposes only and do not represent an endorsement of a product or service by StarTech.com, or an endorsement of the product(s) to which this manual applies by the third-party company in question. Regardless of any direct acknowledgement elsewhere in the body of this document, StarTech.com hereby acknowledges that all trademarks, registered trademarks, service marks, and other protected names and/or symbols contained in this manual and related documents are the property of their respective holders.

Table of Contents

Introduction	1
Features	1
Before You Begin	1
System Requirements	1
Package Contents	1
Installation	2
Windows 98SE	2
Windows 2000/XP	3
Windows Vista	4
Specifications	5
Accessory Products from StarTech.com	6
Technical Support	7
Warranty Information	7

Introduction

Thank you for purchasing a StarTech.com Multi-port USB 2.0 Hub. This product allows you to connect multiple USB 2.0 devices to your computer, while taking up minimal desk space. Perfect for notebook users or those with confined workspaces, this product delivers the performance you expect from USB 2.0 while maintaining backward compatibility with the USB 1.1 standard, so your existing devices still function flawlessly. For added convenience, this product includes a USB-to-power converter so that unused USB ports on your computer can power your high performance devices.

Features

- Compact space-saving design
- Maximum data transfer rate of up to 480 Mbps
- Backward compatible with USB 1.1 standard
- Quick, easy installation

Before You Begin

System Requirements

- A computer with one available USB 2.0 port
- Windows 98SE / ME / 2000 / XP / Vista, MAC 8.6/9.x/10.x and later

Package Contents

This package should contain:

- 1 x USB 2.0 Hub
- 1 x USB Cable
- 1 x Power Adapter
- 1 x User Manual

Installation

To begin the installation process, connect the USB 2.0 Hub to an available USB 2.0 port. Software installation will commence as follows:

Windows 98SE

1. Windows will launch the **Add New Hardware Wizard**. Press **Next** to begin the software installation process.



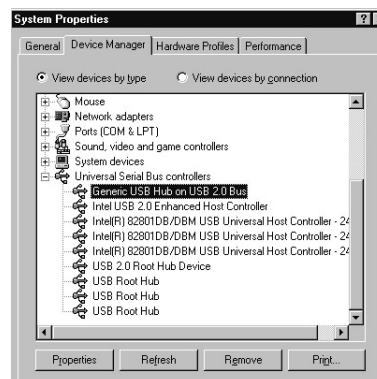
2. When the **Add New Hardware Wizard** appears, click **Next**:



3. Windows will inform you that it is ready to install the driver for the device **Generic USB Hub on USB 2.0 Bus**. Click **Next**:

4. Follow any remaining prompts. When Windows informs you it has finished installing the drivers. Click **Finish**.

5. To verify that the drivers have successfully been installed, right-click on **My Computer** and select **Manage**. Select **Device Manager**, and click on the **[+]** symbol located next to **Universal Serial Bus Controllers**. Here, you should notice a listing for **Generic USB Hub on USB 2.0 Bus**:



6. You can now attach USB devices to the hub.

Windows 2000/XP

1. Windows will launch the **Add New Hardware Wizard**. Press **Next** to begin the software installation process.

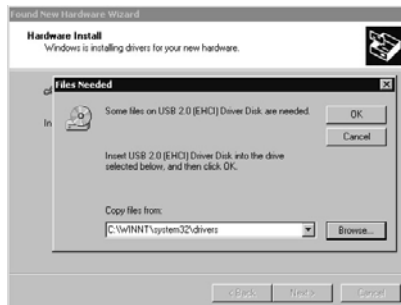
2. When the **Found New Hardware Wizard** appears, click **Next**:



3. Windows will then search for the driver files required for the **Generic USB Hub**. Click **Next**:

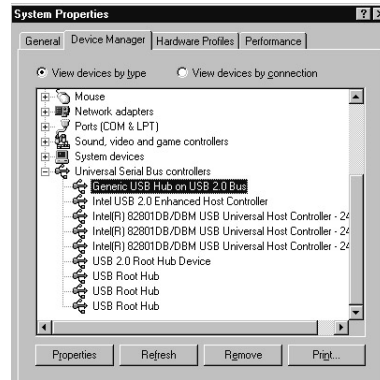


4. Windows will locate the driver file. Click **OK** to proceed, and follow any remaining prompts to complete installation.



Instruction Manual

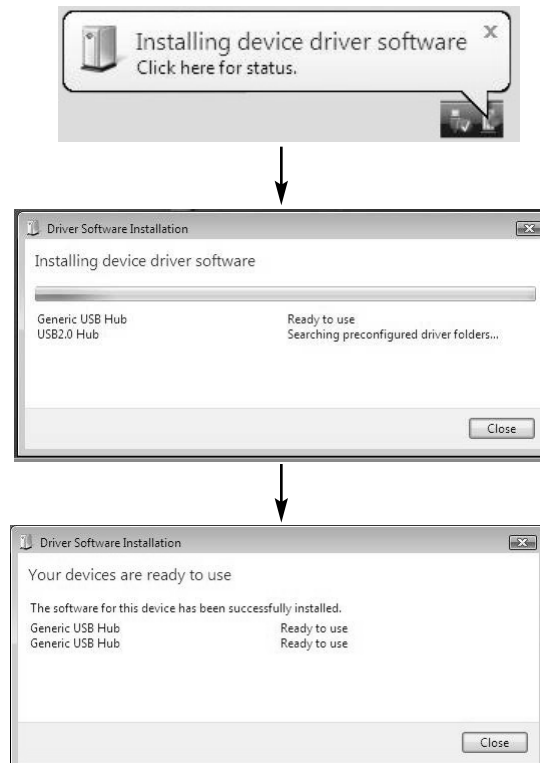
5. To verify that the drivers have successfully been installed, right-click on **My Computer** and select **Manage**. Select **Device Manager**, and click on the [+] symbol located next to *Universal Serial Bus Controllers*. Here, you should notice a listing for **Generic USB Hub**:



6. You can now attach USB devices to the hub.

Windows Vista

Windows Vista driver installation requires no interaction. Simply connect the USB Hub to an available USB port on the host computer, and wait for the Windows notification that your device is now installed:



Specifications

Bus Type	USB
Connectors	1 x USB Mini B Male 4 x USB Type A Male (ST4202USB) 7 x USB Type A Male (ST7202USB)
Cables	1 x 3 ft. USB Type B to Type A Cable
Maximum Data Transfer Rate	480 Mbps
Operating Temperature	0 to 70° C (0 to 158° F)
Regulatory Certifications	FCC, CE, ROHS

Accessory Products from StarTech.com

Contact your local StarTech.com dealer or visit www.startech.com for cables or other accessories that will help you get the best performance out of your new product.



USB2HAB6
6 ft High Speed Certified USB 2.0 Cable



USB2HAB10
10 ft High Speed Certified USB 2.0 Cable



USB2HAB15
15 ft High Speed USB 2.0 Cable



PCI225USB
Value 2 Port USB 2.0 PCI Card



CBUSB220
2 Port USB 2.0 CardBus Adapter

Technical Support

StarTech.com's lifetime technical support is an integral part of our commitment to provide industry-leading solutions. If you ever need help with your product, visit www.startech.com/support and access our comprehensive selection of online tools, documentation, and downloads.

Warranty Information

This product is backed by a one-year warranty. In addition, StarTech.com warrants its products against defects in materials and workmanship for the periods noted, following the initial date of purchase. During this period, the products may be returned for repair, or replacement with equivalent products at our discretion. The warranty covers parts and labor costs only. StarTech.com does not warrant its products from defects or damages arising from misuse, abuse, alteration, or normal wear and tear.

Limitation of Liability

In no event shall the liability of StarTech.com Ltd. and StarTech.com USA LLP (or their officers, directors, employees or agents) for any damages (whether direct or indirect, special, punitive, incidental, consequential, or otherwise), loss of profits, loss of business, or any pecuniary loss, arising out of or related to the use of the product exceed the actual price paid for the product. Some states do not allow the exclusion or limitation of incidental or consequential damages. If such laws apply, the limitations or exclusions contained in this statement may not apply to you.

About StarTech.com

StarTech.com is “The Professionals’ Source for Hard-to-Find Computer Parts”. Since 1985, we have been providing IT professionals with the quality products they need to complete their solutions. We offer an unmatched selection of computer parts, cables, server management solutions and A/V products and serve a worldwide market through our locations in the United States, Canada, the United Kingdom and Taiwan.

Visit **www.startech.com** for complete information about all our products and to access exclusive interactive tools such as the Parts Finder and the KVM Reference Guide. StarTech.com makes it easy to complete almost any IT solution. Find out for yourself why our products lead the industry in performance, support, and value.