

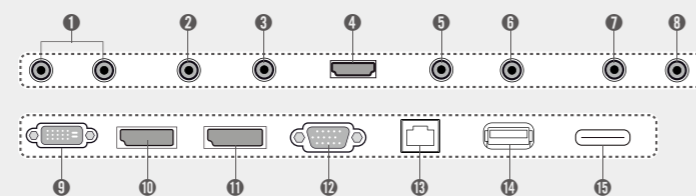
## Specifications

SM5B Series	65SM5B	55SM5B	49SM5B	43SM5B	32SM5B
Screen Size	65	55	49	43	32
Panel Technology	IPS (PD)				
Aspect Ratio	16 : 9				
Native Resolution	1,920 x 1,080 (FHD)				
Brightness	450cd/m <sup>2</sup>				400cd/m <sup>2</sup>
Contrast Ratio	1,300:1	1,100:1			2,000:1
Dynamic CR	4,000,000:1				2,000,000:1
Viewing Angle (H x V)	178 x 178				
Surface Treatment	Hard coating (3H), Anti-glare treatment of the front polarizer (Haze 1 % (Typ.))				
Life time (Typ.)	24 Hours				
Orientation	Portrait & Landscape				
Input	HDMI, DP, DVI-D, RGB, Audio, USB 3.0, SD card				
Output	DP, Audio, External Speaker				
External Control	RS232C (In/Out), RJ45, IR Receiver, Pixel Sensor				
Bezel Color	Black				
Bezel Width	11.9mm (T/R/L), 18mm (B)	11.9mm (T/R/L), 18mm (B)	11.9mm (T/R/L), 18mm (B)	11.9mm (T/R/L), 18mm (B)	13mm (T/R/L), 18mm (B)
Monitor Dimension (W x H x D)	1456.9 x 838 x 41.1mm	1,238 x 714.9 x 38.6mm	1,102.2 x 638.5 x 38.6mm	969.6 x 563.9 x 38.6mm	729.4 x 428.9 x 55.5mm
Weight (Head)	27.7kg	17.3kg	14.1kg	9.8kg	5.2kg
Weight (Head + Stand)	32.9kg	20.6kg	17.4kg	12.3kg	6kg
Monitor with Optional Stand & Speaker Dimensions (W x H x D)	1,456.9 x 898.1 x 293.7mm	1,238 x 773.4 x 219.6mm	1,102.2 x 696.8 x 219.6mm	969.6 x 622.2 x 193mm	729.4 x 481 x 154.2mm
Weight (Head + Stand + Speaker)	33.4kg	21.1kg	17.9kg	12.8kg	6.5kg
Carton Dimensions (W x H x D)	1,561 x 951 x 170mm	1,330 x 813 x 151mm	1,197 x 760 x 134mm	1,052 x 650 x 123mm	810 x 510 x 132mm
Packed Weight	33.6kg	21.5kg	17.1kg	12.4kg	6.5kg
VESA™ Standard Mount Interface	300 x 300				200 x 200
SPECIAL FEATURES	Temperature Sensor, ISM Method, Wi-Fi (802.11n combo built-in), USB Cloning, Contents Scheduling, Sync Mode, PM Mode, Local Time Auto Setting, Overlay Touch, Wake on LAN, Pivote Mode, Content Rotation 0,90, Fail Over, No Signal Image (Up to 5MB), BEACON On/Off, Embedded Template				
ENVIRONMENTAL CONDITIONS	Operating Temperature Range	0 °C to 40 °C	0 °C to 40 °C	0 °C to 40 °C	0 °C to 40 °C
Operating Humidity Range	10 % to 80 %	10 % to 80 %	10 % to 80 %	10 % to 80 %	10 % to 80 %
POWER	Power Supply	100-240V~, 50/60Hz			
Power Type	Built-In Power				
POWER CONSUMPTION	Typ.	110W	80W	75W	70W
Smart Energy Saving	75W	60W	55W	50W	40W
STANDARD (CERTIFICATION)	Safety	UL / cUL / CB / TUV / KC			
EMC	FCC Class "A" / CE / KCC				
ErP / Energy Star	Yes / Yes (Energy Star 6.0)				
MEDIA PLAYER COMPATIBILITY	External Media player Attachable	Yes (MP500/MP700)	Yes (MP500/MP700)	Yes (MP500/MP700)	No
SOFTWARE COMPATIBILITY	SuperSign-w lite	Yes			
SuperSign-c	Yes				
ACCESSORY	Basic	Remote Controller (2 batteries included), Power Cord, QSG, RGB Cable, Regulation Book, Phone to RS232C Gender, Memory cover			
Optional	Speaker (SP-5000), Stand (ST-652T), Wall bracket (LSW350B), VESA Adapter (AM-B330S), OPS Kit, HDBaseT	Speaker (SP-5000), Stand (ST-492T), Wall bracket (LSW350B), VESA Adapter (AM-B330S), OPS Kit, HDBaseT	Speaker (SP-5000), Stand (ST-492T), Wall bracket (LSW350B), VESA Adapter (AM-B330S), OPS Kit, HDBaseT	Speaker (SP-5000), Stand (ST-432T), Wall bracket (LSW230B), VESA Adapter (AM-B220S), OPS Kit, HDBaseT	Speaker (SP-5000), Stand (ST-322T), Wall bracket (LSW230B), OPS Kit, HDBaseT

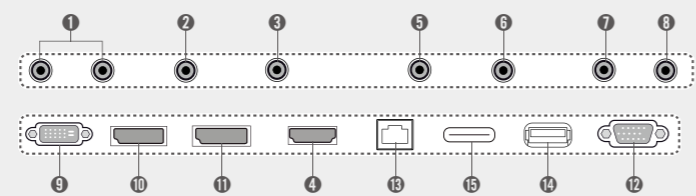
## Connectivity

- 1 SPEAKER OUT
- 2 IR & LIGHT SENSOR
- 3 PIXEL SENSOR
- 4 HDMI
- 5 RS-232C IN
- 6 RS-232C OUT
- 7 AUDIO IN
- 8 AUDIO OUT
- 9 DVI-D IN
- 10 DP IN
- 11 DP OUT
- 12 RGB IN
- 13 LAN
- 14 USB 3.0
- 15 SD

### 55SM5B / 49SM5B / 43SM5B / 32SM5B



### 65SM5B



Download LG Commercial Display Mobile App



More info : [www.lgcommercial.com](http://www.lgcommercial.com)

YouTube [youtube.com/c/LGCommercialDisplay](https://www.youtube.com/c/LGCommercialDisplay)

LG may make changes to specifications and product descriptions without notice.  
Copyright © 2015 LG Electronics Inc. All rights reserved. "LG Life's Good" is a registered of LG Corp.  
The names of products and brands mentioned here may be the trademarks of their respective owners.



## Smart Platform with a Powerful Embedded System-on-Chip

### Standard Performance SM5B/SM5KB Series



The SM5B Series, webOS signage, allows for customized apps that are easy to create using LG's Software Development Kit. Its built-in Wi-Fi and SoC reduces the total cost of ownership and simplifies installation, which allows you to manage content more conveniently.

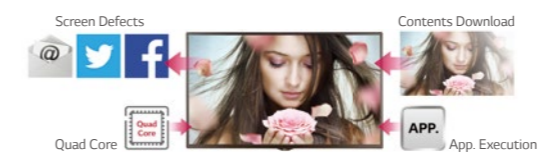
## Key Features

### Smart Platform



### Quad Core SoC\*

The High Performance SoC can execute several tasks at the same time and provides smooth content playback.



\*SoC : System-on-Chip

### webOS 2.0

The webOS 2.0 platform provides powerful and convenient tools to create content, including app development materials and support for various operating systems (Windows, Linux, Mac OS).

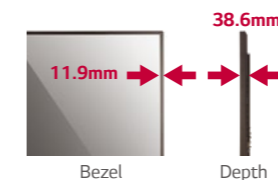


### Enhanced Design Configuration



### Slimmer Bezel & Depth

The thinner bezel & depth allows a perfect fit for a sleek look.



### Detachable Logo

The detachable logo allows for installation in the desired orientation in landscape or portrait mode.



### Cable Management

The well-organized cable terminals in the back optimize available space.



### Built-in IR Receiver

This receiver is very space efficient with features that are detachable and adjustable to suit your environment.



# Smart Platform with a Powerful Embedded System-on-Chip

## Standard Performance SM5B/SM5KB Series



**Screen Sizes**  
65"/55"/49"/43"/32"

### SM5B/SM5KB\* Series

- Brightness : 450 cd/m<sup>2</sup>
- Bezel : Top/Left/Right 11.9mm (Bottom 18.0mm)
- Depth : 38.6mm
- Interface : HDMI/DVI/RGB/RJ45/IR, Daisy-Chain (DP, RS232C)

\*Built-in Speaker : 10W x 10W



## Key Features

### Built-in Wi-Fi

#### Mirroring

Content sharing is more convenient on a Wi-Fi network.



#### SoftAP

The SM5B with SoftAP software can operate as a wireless access point for mobile devices.



#### Simple Installation

Installation has been simplified by removing the external media player and Ethernet/RS232C cables.



### Enhanced Maintenance

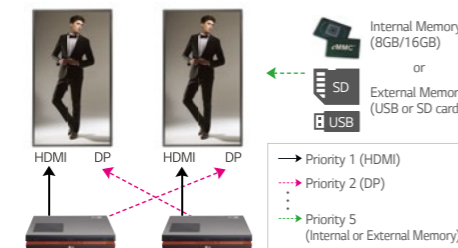
#### Dust & Humidity Protection

Circuit board reliability is enhanced with conformal coating that protects against dust, iron powder, humidity and other harsh conditions.



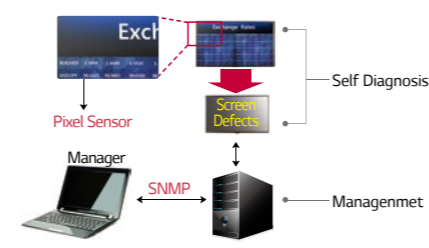
#### Advanced Failover

Enables content in the internal or external memory to be displayed without dead spots when none of the external inputs is working. The monitor performs the signal switching automatically.



#### Screen Fault Detection

Detects screen failure and sends an alert log by email.



### Supportive Convenience

#### BEACON

With BEACON and Bluetooth Low Energy (BLE) supported by SM5B, retail stores can provide coupons and information in real-time.



#### OPS\* Kit / HDBaseT Box

The SM5B provides an OPS Kit to connect a third-party OPS player or HDBaseT box. Users have the flexibility to choose any media player as long as it complies with the OPS.

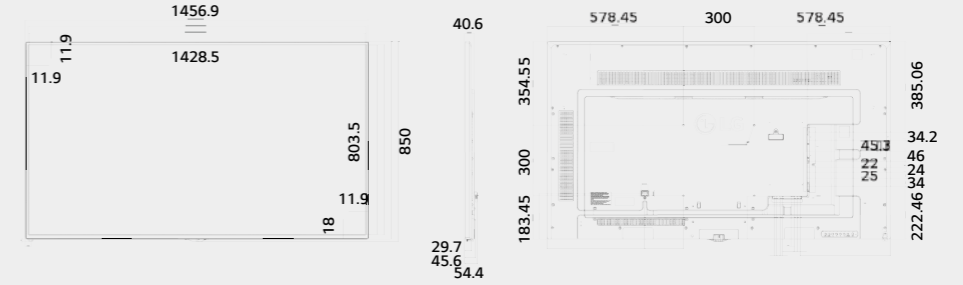


\*OPS : Open Pluggable Specification

### Dimension (unit : mm)

#### 65"

1,456.9 x 838 x 41.1 / 27.7kg



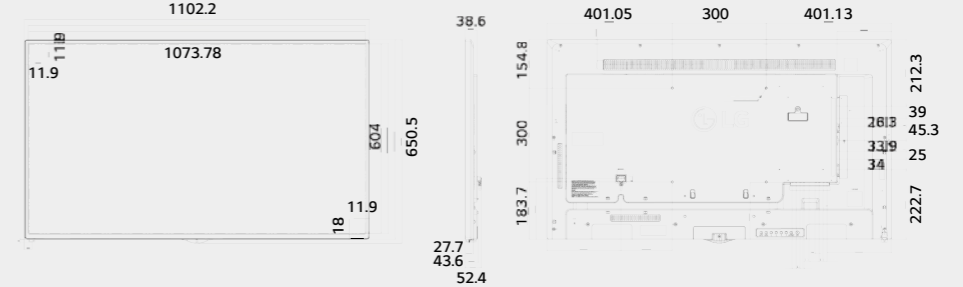
#### 55"

1,238 x 714.9 x 38.6 / 17.3kg



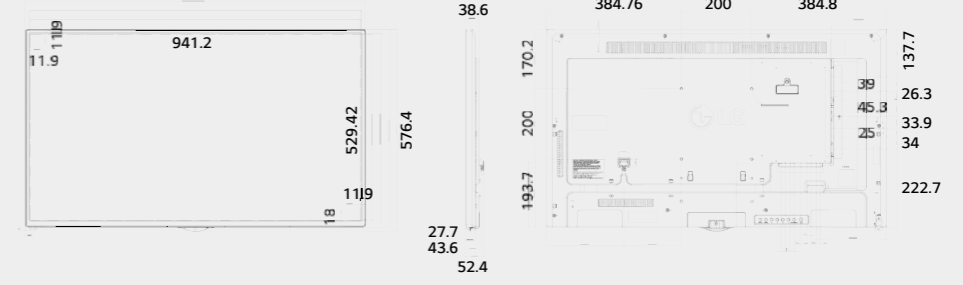
#### 49"

1,102.2 x 638.5 x 38.6 / 14.1kg



#### 43"

969.6 x 563.9 x 38.6 / 9.8kg



#### 32"

729.4 x 428.9 x 55.5 / 5.2kg

