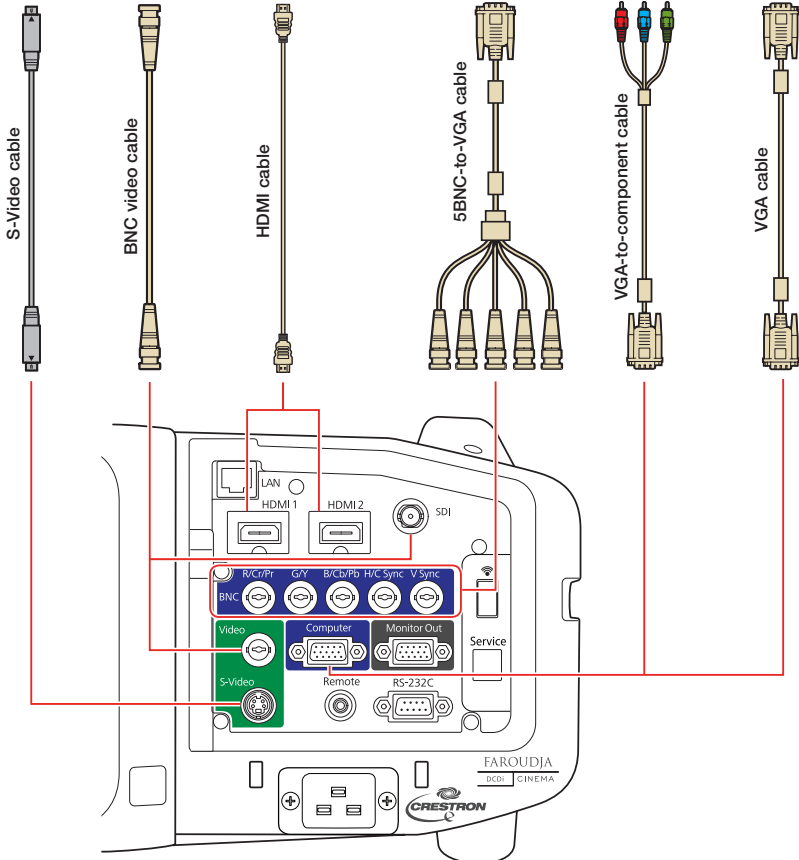


# PowerLite® Pro Z8150NL/Z8250NL/Z8255NL/ Z8350WNL/Z8450WUNL/Z8455WUNL

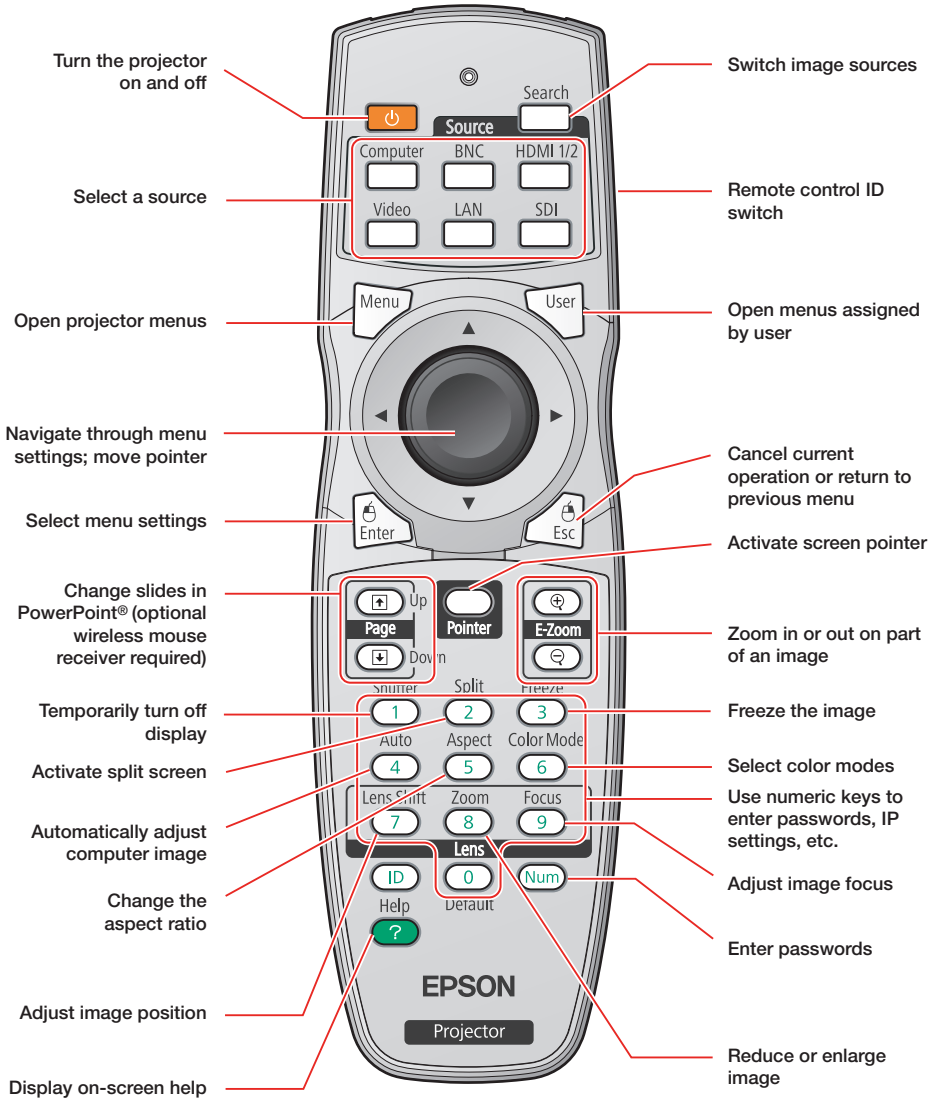
## Quick Reference

This *Quick Reference* card gives brief instructions on connecting your PowerLite projector and using common features. For details, see the online *User's Guide*.





**Note:** SDI is available for the PowerLite Pro Z8450WUNL and Z8455WUNL only.

# Remote Control Map



## Turning the Projector On

1. Turn on your computer or image source.
2. Remove the lens cover.
3. Press the  power button. After the power light stays green, the projector is ready.

**Note:** If the **Direct Power On** function is enabled, you can turn the projector on without pressing the  power button; just plug it in or flip the switch controlling the outlet to which the projector is connected. To turn on this feature, see the online *User's Guide*.

4. If your image does not appear, see “Switching Between Image Sources” or “Troubleshooting.”

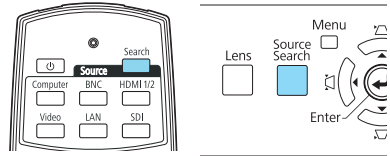
## Changing the Language of the Projector Menus

The default language of the projector's menu system is English, but you can change it as necessary.

1. Press the **Menu** button to access the projector's menu system.
2. Select **Extended** and press **Enter**.
3. Select **Language** and press **Enter**.
4. Select your language and press **Enter**.
5. When you're done, press **Menu** to exit.

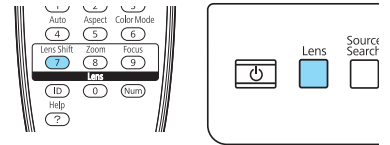
## Switching Between Image Sources


Press the **Search** button (remote control), one of the **Source** buttons (remote control), or the **Source** (remote control) or the **Source** button (projector).

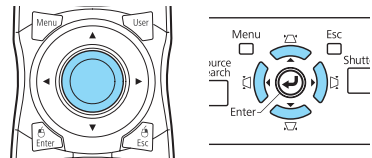


## Adjusting Image Position

Press the **Lens Shift** button (remote control) or **Lens** button (projector) until **Adjust Lens Shift** is displayed on the screen.



To adjust the position, use the  button (remote control) or the arrow buttons (projector).

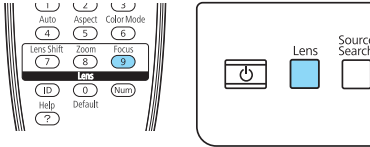



Press the button repeatedly to make fine adjustments. Press and hold the button to make larger adjustments.

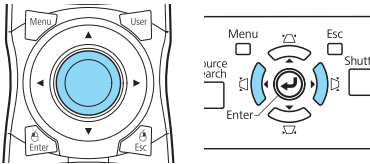
If the projector is on a table, you can level the image by turning any of the projector's adjustable feet.

## Focusing the Image

Press the **Focus** button (remote control) or **Lens** button (projector) until **Adjust Focus** is displayed on the screen.

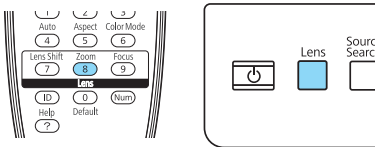



To adjust the focus, use the  button (remote control) or the left and right arrow buttons (projector).

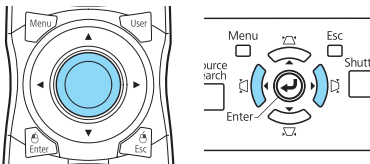


## Zooming the Image



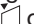


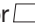


Press the **Zoom** button (remote control) or **Lens** button (projector) until **Adjust Zoom** is displayed on the screen.



To reduce/enlarge the image, use the  button (remote control) or the left and right arrow buttons (projector).



## Correcting Image Shape

- If your image looks like  or , press the  or  button on the projector to correct it. You can also use the remote control to correct the image shape. See the online *User's Guide*.
- If your image looks like  or , press the  or  button on the projector to correct it. You can also use the remote control to correct the image shape. See the online *User's Guide*.
- If your image is uneven on all sides, you can use Quick Corner<sup>®</sup> to adjust the shape. See the online *User's Guide*.

## Changing the Aspect Ratio

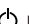

Press the **Aspect** button on the remote control to change the aspect ratio.

For images input through the Computer port, select **Normal** to automatically resize the image.

## Making Other Image Adjustments

For help on using the projector's features (such as Color Mode and Super-resolution) to improve the image quality, see the online projector manuals. You can also view information on how to adjust the image color, position, and edges (Edge Blending) when projecting from multiple projectors to create one seamless widescreen image.

## Turning the Projector Off


Press the  power button to turn the projector off. At the confirmation message, press the  power button again.

**Note:** If the **Direct Power On** function is enabled, you can unplug the projector or flip the switch controlling the outlet to which the projector is connected instead. To turn on this feature, see the online *User's Guide*.

With Epson's Instant Off® technology, you don't have to wait for the projector to cool down; just turn it off or unplug it when you're done.


## Troubleshooting

### If you see a blank screen or the message *No signal*

- Make sure the  power light on the projector is green and not flashing, and the lens cover is removed.
- Make sure the cables are connected correctly. See the online *User's Guide*.
- You may need to change the image source. See "Switching Between Image Sources." (Also make sure the source device is turned on.)

### If the projector and the notebook don't display the same image

#### Windows

Press the function key on your keyboard that lets you display on an external monitor. It may be labeled **CRT/LCD** or have an icon such as . You may have to hold down the **Fn** key while pressing it (such as **Fn + F7**). Wait a moment for the display to appear.

#### Mac OS® X

Open **System Preferences** and select **Displays**. Select the **VGA Display** or **Color LCD** option if necessary, then click the **Arrange** or **Arrangement** tab, and select the **Mirror Displays** checkbox.

## Where to Get Help

### Manuals

For more information about using the projector, click the icons on your desktop to access the online manuals (requires an Internet connection). If you don't have icons to the manuals, you can install them from the projector CD or go to the Epson® website, as described below.

### Internet support

Visit [epson.com/support](http://epson.com/support) (U.S.) or [www.epson.ca/support](http://www.epson.ca/support) (Canada) where you can download utilities and documentation, get FAQs and troubleshooting advice, or e-mail Epson.

### Speak to a support representative

To use the EPSON® PrivateLine® Support service, call (800) 637-7661 and enter the PIN on the EPSON PrivateLine Support card included with your projector. This service is available for the duration of your warranty period. You may also speak with a projector support specialist by dialing (562) 276-4394 (U.S.) or (905) 709-3839 (Canada).

Support hours are 6 AM to 8 PM, Pacific Time, Monday through Friday and 7 AM to 4 PM, Pacific Time, Saturday.

Days and hours of support are subject to change without notice. Toll or long distance charges may apply.

### Purchase supplies and accessories

You can purchase screens and other accessories from an Epson authorized reseller. To find the nearest reseller, call 800-GO-EPSON (800-463-7766). Or you can purchase online at [www.epsonstore.com](http://www.epsonstore.com) (U.S. sales) or [www.epson.ca](http://www.epson.ca) (Canadian sales).

## Replacement Parts

| <b>Product</b>                      | <b>Part number</b> |
|-------------------------------------|--------------------|
| Replacement lamp one-pack (ELPLP72) | V13H010L72         |
| Replacement lamp two-pack (ELPLP73) | V13H010L73         |
| Air filter                          | V13H134A23         |

You can purchase replacement parts from an Epson authorized reseller. See “Where to Get Help” inside this card for more information.

**EPSON**<sup>®</sup>  
EXCEED YOUR VISION



EPSON, Instant Off, PowerLite, and Quick Corner are registered trademarks and EPSON Exceed Your Vision is a registered logomark of Seiko Epson Corporation. PrivateLine is a registered trademark of Epson America, Inc.

General Notice: Other product names used herein are for identification purposes only and may be trademarks of their respective owners. Epson disclaims any and all rights in those marks.

This information is subject to change without notice.

© 2012 Epson America, Inc. 2/12

CPD-36222R1

Printed in XXXXXX



\*412292100\*