



# MICROFLEX™

## MXP-3 WALL MOUNT CONFERENCING LOUDSPEAKER

### OVERVIEW

Passive wall mount loudspeaker for speech and program audio reproduction in meeting rooms employing enhanced spatial audio. Microflex Conferencing Loudspeakers are designed for conferencing with clear, intelligible audio.

### FEATURES

- Innovative Balanced Mode Radiator (BMR) driver is voiced specifically for speech intelligibility in conferencing and meeting applications
- Wide dispersion for complete room coverage and consistent sound quality for every listener
- Flat-disc diaphragm provides more natural sound than conventional cone-shaped diaphragms and a more compact size
- Eliminates the need for a crossover in the critical 1-3 kHz speech frequency range and delivers sound from a single point source for maximum clarity
- Up to four MXP-3 loudspeakers can be used with the MXN-AMP PoE+ multichannel amplifier
- Compact design with only 2.5-inch depth can be wall mounted horizontally or vertically, or on-ceiling with included mounting hardware. (Note: Shure recommends the use of an additional safety tether for overhead components.)
- Available in black or white finish, paintable to match room décor
- Seamless connectivity and compatibility with popular collaboration platforms, including Microsoft Teams and Zoom

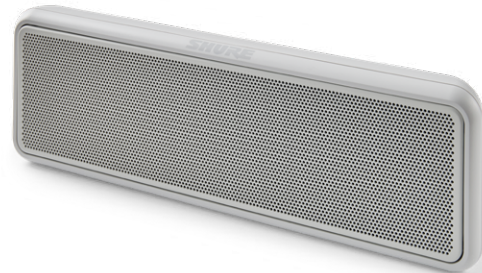
### SPECIFICATIONS

(subject to change) All specifications are within  $\pm 3$  dB unless otherwise noted.

Frequency Response (-3 dB)	~120Hz - 20kHz
Nominal Impedance	4 $\Omega$
Coverage Angle	98°
Maximum SPL	AES75 max linear sound levels: 89 dBZ, 108 dBZpk, 89 dBA
Sensitivity	82 dB SPL 1W/meter
Connector Type	2-pin connector, 0.2 in. (5.08 mm) pitch, Jiekle 2EDG-5.08 V/R
Maximum Input Power	10W
Weight	1.34 lbs (0.61 kg)
Product Dimensions	11.2 x 3.5 x 1.9 in. (283.8 x 90 x 48.5 mm)
Operating Temperature Range	-7 to 40°C (19.4 to 104°F)



**MXP-3B**  
Wall Mount Conferencing Loudspeaker  
BLACK



**MXP-3W**  
Wall Mount Conferencing Loudspeaker  
WHITE