



## VG2448A - 24" 1080P ERGONOMIC 40-DEGREE TILT IPS MONITOR WITH HDMI, DP, AND VGA

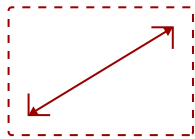
### Key Features

---

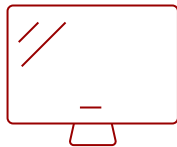
- 24 Inch Full HD (1920x1080p) IPS monitor with thin bezels and 60Hz refresh rate
- Advanced ergonomics (40-degree tilt, swivel, rotate and height) for all-day comfort
- Easy-to-install quick release stand with carrying handle and client mount
- Eco friendly easy-open box for streamlined monitor setup
- The VG2448a supports laptops, PCs, Macs and more with HDMI, USB, DisplayPort, VGA inputs



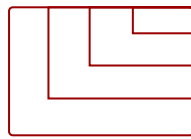
Flexible, future-proof connectivity options



**24  
DISPLAY**



**IPS  
PANEL**



**1920 x 1080  
RESOLUTION**



### Product Description

---

Designed for the modern day office, the ViewSonic® VG2448a monitor delivers an efficient end-to-end enterprise experience. Featuring SuperClear® IPS panel technology and 1080p resolution, this 24" (23.8" viewable) monitor delivers crisp and clear images from nearly any viewing angle. The 3-sided thin bezel design provides a seamless viewing experience for multi-monitor setups. For enhanced productivity, an advanced ergonomic design offers a wide range of customizable adjustments for maximum comfort including pivot, swivel, height adjustment, and tilt. With the ability to tilt an impressive 40-degrees, the VG2448a is ideal for users who prefer to work while standing up, as well as for those who like to use their screen for group discussions. Versatile connectivity options include HDMI, DisplayPort, VGA, and USB. This monitor is also shipped in eco-friendly biodegradable packaging, along with an easy-to-install quick release stand that makes for simple out-of-the box setup. The quick release stand also includes an integrated client mount and cable management features, making this monitor perfect for deployment in cloud-based environments.

# Specifications

	More Information
UPC	766907014693
Screen Size	24
Viewable Area (in.)	23.8
Panel Type	IPS
Display Resolution	1920 x 1080
Display Resolution	Full HD (1920x1080)
Static Contrast Ratio	1,000:1
Dynamic Contrast Ratio	50,000,000:1
Light Source	LED
Brightness	250 cd/m2
Colors	16.7M
Color Space Support	6 bit + A-FRC
Aspect Ratio	16:9
Response Time (Typical GTG)	5ms
Viewing Angles	178º horizontal, 178º vertical
Backlight Life (Hours)	30,000
Panel Surface	Anti-Glare type, Hard-coating (3H), Haze 25%
PC Resolution (max)	1920 x 1080
Mac® Resolution (max)	1920 x 1080
USB Type A	4
USB Type B	1
VGA	1
HDMI 1.4 In	1
DisplayPort	1
Internal Speakers	2W (x2)
Eco Mode (Conserve)	16.5W
Eco Mode (optimized)	17.5W
Consumption (typical)	19.5W
Consumption (max)	53.9W
Voltage	AC 100-240V (universal), 50-60Hz
Stand-by	0.5W
Power Supply	Internal
Cable Organization	No

<b>Kensington Lock Slot</b>	1
<b>Physical Controls</b>	Key 1 (eye), Key 2, Key 3, Key 4, Key 5, Key 6 (power)
<b>On Screen Display</b>	Input Select, Audio Adjust, ViewMode, Color Adjust, Manual Image Adjust, Setup Menu
<b>Temperature</b>	32-104º F (0 - 40º C)
<b>Humidity (non-condensing)</b>	20-90%
<b>VESA Compatible</b>	100 x 100 mm
<b>Frequency Horizontal</b>	VGA, HDMI(1.4), DisplayPort: 24 ~ 82KHz
<b>Frequency Vertical</b>	VGA, HDMI(1.4), DisplayPort: 50 ~ 75 Hz
<b>Height Adjust</b>	130 mm / 5.1 in
<b>Swivel</b>	120º
<b>Pivot (Right/Left)</b>	90º / 90º
<b>Tilt (Forward/Back)</b>	5º / 40º
<b>Net (lbs)</b>	13.6
<b>Net Without Stand (lbs)</b>	8.4
<b>Gross (lbs)</b>	19.8
<b>Net (kg)</b>	6.2
<b>Net Without Stand (kg)</b>	3.8
<b>Gross (kg)</b>	9.0
<b>Packaging (in.)</b>	23.4 x 15.6 x 8.3
<b>Physical (in.)</b>	21.2 x 16.0~20.2 x 8.0
<b>Physical Without Stand (in.)</b>	21.2 x 12.6 x 2.0
<b>Packaging (mm)</b>	595.0 x 396.0 x 210.0
<b>Physical (mm)</b>	539.0 x 406.19~511.9. x 202.0
<b>Physical Without Stand (mm)</b>	539.0 x 320.0 x 52.0
<b>Regulations</b>	cTUVus, FCC-B, ICES003, Energy Star 8.0, EPEAT Silver, CEC, NOM, Mexico Energy
<b>Package Contents</b>	LCD Display, Power Cable, DisplayPort Cable, USB A/B Cable, Quick Start Guide
<b>Recycle/Disposal</b>	Please dispose of in accordance with local, state or federal laws.
<b>Warranty</b>	Three-year limited warranty on parts, labor and backlight

UPC: 766907014693



**Contact Sales**  
[ViewSonic.com](http://ViewSonic.com)  
888.881.8781  
email: [salesinfo@viewsonic.com](mailto:salesinfo@viewsonic.com)