

## PERFORMANCE

### Processor

AMD Ryzen™ 7 5825U (8C / 16T, 2.0 / 4.5GHz, 4MB L2 / 16MB L3)

### Graphics

Integrated AMD Radeon™ Graphics

### Chipset

AMD SoC Platform

### Memory

8GB Soldered DDR4-3200 + 8GB SO-DIMM DDR4-3200

### Memory Slots

One memory soldered to systemboard, one DDR4 SO-DIMM slot, dual-channel capable

### Max Memory<sup>[1]</sup>

Up to 16GB (8GB soldered + 8GB SO-DIMM) DDR4-3200 offering

### Storage

512GB SSD M.2 2280 PCIe® 3.0x4 NVMe®

### Storage Support<sup>[2]</sup>

Models with 45Wh battery: one drive, 1x M.2 SSD

- M.2 2242 SSD up to 1TB
- M.2 2280 SSD up to 1TB

### Storage Slot

Models with 45Wh battery: one M.2 slot

- One M.2 2280 PCIe® 3.0 x4 slot

### Card Reader

SD Card Reader

### Optical

None

### Audio Chip

High Definition (HD) Audio

### Speakers

Stereo speakers, 1.5W x2, Dolby® Audio™

### Camera

HD 720p with Privacy Shutter

### Microphone

2x, Array

### Battery

Integrated 45Wh

### Power Adapter

65W Round Tip (3-pin)

## DESIGN

### Display

15.6" FHD (1920x1080) TN 250nits Anti-glare

### Touchscreen

None

### Keyboard

Backlit, French / English

### Touchpad

Buttonless Mylar® surface multi-touch touchpad, supports Precision TouchPad (PTP), 69 x 104 mm (2.72 x 4.09 inches)

### Case Color

Abyss Blue

### Surface Treatment

IMR (In-Mold Decoration by Roller)

### Case Material

PC-ABS (Top), PC-ABS (Bottom)

### Dimensions (WxDxH)<sup>[3]</sup>

359.2 x 236.5 x 19.9 mm (14.14 x 9.31 x 0.78 inches)

### Weight<sup>[4]</sup>

Starting at 1.63 kg (3.59 lbs)

## SOFTWARE

### Operating System

Windows® 11 Home, French / English

### Bundled Software

Office Trial

## CONNECTIVITY

### Ethernet

No Onboard Ethernet

### WLAN + Bluetooth<sup>[5]</sup>

Wi-Fi® 6, 11ax 2x2 + BT5.2

### Standard Ports

- 1x USB 2.0
- 1x USB 3.2 Gen 1
- 1x USB-C® 3.2 Gen 1 (support data transfer, Power Delivery and DisplayPort™ 1.2)
- 1x HDMI® 1.4b
- 1x Headphone / microphone combo jack (3.5mm)
- 1x Card reader
- 1x Power connector

### Docking

Various docking solutions supported via USB-C®.

For more compatible docking solutions, please visit [Docking for IdeaPad® 3 15ABA7](#)

## SECURITY & PRIVACY

### Security Chip

Firmware TPM 2.0 Enabled

### Fingerprint Reader

Touch Style, Integrated in Power Button

### Other Security

Camera privacy shutter

## SERVICE

### Base Warranty

1-year, Courier or Carry-in

### Included Upgrade

None

## ACCESSORIES

### Bundled Accessories<sup>[6]</sup>

None

## CERTIFICATIONS

### Green Certifications

- ENERGY STAR® 8.0
- ErP Lot 3
- RoHS compliant

## MODEL

TopSeller : No

Announce Date : 2022-03-11

EAN / UPC / JAN : 196380092480

End of Support : 2028-04-14



Product image is a sample, it may not match the real color of this model

Note:

<sup>[1]</sup> The max memory is based on the test results with current Lenovo memory offerings.

<sup>[2]</sup> The storage capacity supported is based on the test results with current Lenovo storage offerings.

<sup>[3]</sup> The system dimensions may vary depending on configurations.

<sup>[4]</sup> The system weight is approximate and based on results in.....

· Lenovo reserves the right to change specifications without notice.

To see more note information, please link to

<https://psref.lenovo.com/Detail/1913?M=82RN0038CF>

## Premium Care - Advanced Support from Real People. Real Fast.



### REAL PERSON

Choose how you want to reach us - through the phone, chat or email - our expert technicians will take care of you.



### REAL FAST

Highly trained technicians will provide you real-time solutions, whatever the issue, on your first contact. If needed, our team will schedule an onsite visit for the next business day.



### HASSLE FREE

'Getting started' and 'how-to' assistance for hardware and software. Easy solutions that are simple to reach - that's how Premium Care delivers you the ideal support experience.



### PC HEALTH CHECK

Free annual PC Health Check that allows our experts to spot issues before you do so they can resolve them quickly and help you avoid PC problems.

## Accidental Damage Protection - Protection of your PC from the unexpected.

Experience shows that a significant portion of devices may be damaged (and not covered under warranty) in the first three years. Lenovo's Accidental Damage Protection service covers accidents beyond the system warranty such as drops, spills, bumps and even electrical surges. Make sure your new device has maximum protection, avoid unplanned costs and get peace of mind.

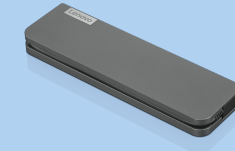
## Base Warranty – Included with the systems you purchase, default 1- or 3-year coverage window.

## Warranty Extensions & Upgrades – Service and protection that's right for your circumstances.

- Pick Up & Return Courier
- Onsite Support
- Technician Installed Customer
- Replaceable Unit Service
- International Warranty Upgrade

Lenovo may not offer the products, services or features discussed in this document in all regions. Lenovo may withdraw an offering at any time. Consult your local representative for information on offerings available in your area. Lenovo reserves the right to change specifications or other product information without notice. Lenovo is not responsible for photographic or typographical errors. Lenovo provides this publication "as is" without warranty of any kind, either express or implied, including the implied warranties of merchantability or fitness for a particular purpose.

## Recommended Accessories



### Lenovo USB-C Mini Dock\_US

40AU0065US

Expand Your Potential with An Universal Mini Dock; Lenovo understands that modern business depends on a wide variety of PC's and even brands to meet their business needs. To make this easier Lenovo USB-C Mini dock is ...

## Recommended Services

|        |   |
|--------|---|
| BEST   | 3Y Premium Care Plus upgrade from 1Y Courier/Carry-in (5WS1J38620)        |
| BETTER | 3Y Premium Care with Onsite upgrade from 1Y Courier/Carry-in (5WS0T73714) |
| GOOD   | 3Y Courier/Carry-in upgrade from 1Y Courier/Carry-in (5WS0K75663)         |

For a full list of accessories and services, please visit:  
<https://smartfind.Lenovo.com>

Lenovo

**PSREF**  
Product Specifications  
Reference