

Quick Start Guide

Terms & Conditions

Read this document before operating the product

Read this document before operating the mobile device, accessories, or software (defined collectively and individually as the "Product") and keep it for future reference. This document contains important Terms and Conditions. Electronic acceptance, opening the packaging, use, or retention of the Product constitutes acceptance of these Terms and Conditions.

SAMSUNG Galaxy Watch8 | Watch8 Classic

Rated IP68: Dust-tight. Tested for submersion in up to 5 feet of fresh water for up to 30 minutes.



QR code for Samsung use
Printed in Korea
GH68-57156A_REV_2.0



Your device



Use only compatible charging devices and accessories. Damage caused by use of accessories which are not compatible may not be covered by warranty.

Get started

Charge your device

Use the included USB wireless charger and a USB Type-C power adapter (sold separately). Center the device on the wireless charger.



Turn the device on

Press and hold Power/Home for a few seconds.

Activate your Galaxy Watch

Some models are 4G LTE-enabled. Consult your wireless carrier for details about activation.

Get connected



Samsung Wearable
Connect your device and smartphone.



Scan the code or visit, smsg.us/galaxywearable



Samsung Health
Save and manage health related data.

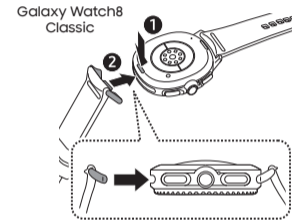


Scan the code, or visit smsg.us/samsunghealth

Note: Blood Pressure/ECG/Sleep Apnea features are not currently available in all countries.

Band details

To attach the band, press the Band release button and press the end of the band firmly into the lug.



To remove the band, press the Band release button.

Use caution to avoid damaging this product. Do not expose the product to humidity, solvents or high temperatures; doing so may stain, wrinkle, discolor or distort it.

Do more

Your Samsung account

Do everything Samsung with one account. Sign in at smsg.us/mypage to connect all your devices, use the latest features, and access exclusives, plus find product support, order tracking, and more.

Get help

samsung.com/us/support
youtube.com/samsungcare

Tech for kids

Learn about devices and services to deliver exceptional value for your family, visit samsung.com/us/featured/parents-zone-tech-for-kids

Approved firmware versions

This device will only operate with firmware versions that have been approved for use by your wireless carrier and the device manufacturer. If unauthorized firmware is placed on the device, it might not function properly.

Safeguarding devices

We encourage customers to take appropriate measures to secure their devices and invite them to take advantage of the features available on this device to help secure it from theft and/or other unauthorized access and use. This device has a locking function (e.g., user-defined codes or patterns) that can serve as a first line of defense against unauthorized use or access to stored information. Preloaded security applications that allow customers to track or locate misplaced devices can be found on several devices. Lost or stolen devices should be immediately reported to your wireless carrier so that proper measures can be taken to protect accounts. For additional information, visit your wireless carrier's Privacy Policy.

Terms & Conditions

Important legal information

Read this document before operating the mobile device, accessories, or software (defined collectively and individually as the “Product”) and keep it for future reference. This document contains important Terms and Conditions. Electronic acceptance, opening the packaging, use, or retention of the Product constitutes acceptance of these Terms and Conditions.

You can obtain a copy of the complete Terms and Conditions and Samsung Standard One-year Limited Warranty by contacting Samsung at the address or phone number provided in this document.

Dispute Resolution Agreement - This Product is subject to a binding Dispute Resolution Agreement, which includes arbitration terms, between you and SAMSUNG ELECTRONICS AMERICA, INC. (“Samsung”). You can opt out of the agreement within 30 calendar days of the first consumer purchase by emailing optout@sea.samsung.com or calling 1-800-SAMSUNG (726-7864) and providing the applicable information.

The Dispute Resolution Agreement, Standard One-year Limited Warranty, End User License Agreement (EULA), and additional Health, Safety and Device care information, including:

- Device Temperature
- Samsung Knox security platform
- Maintaining Dust and Water Resistance (IP rating)
- Location, Navigation, GPS and AGPS
- Wireless Emergency Alerts (WEA)
- Hearing Aid Compatibility (HAC)

are available at:

English:

www.samsung.com/us/support/legal/mobile

Spanish:

www.samsung.com/us/support/legal/mobile-sp

This information is also on the device:

Settings > **About phone** or **About device** or **About tablet** or **About watch** > **Legal information** > **Samsung legal** or, search for “Legal”

You can access the Federal Communications Commission (FCC) certification, if applicable, by opening **Settings** > **About phone** or **About device** or **About tablet** or **About watch** > **Status** or **Status information**

Specific Absorption Rate (SAR) certification information

For information about SAR, visit:

- www.fcc.gov/general/radio-frequency-safety-0
- www.fcc.gov/encyclopedia/specific-absorption-rate-sar-cellular-telephones
- www.samsung.com/sar

Exposure to Radio Frequency (RF) signals

For information, visit www.samsung.com/us/support/legal/mobile > **Health and Safety Information** > **Exposure to Radio Frequency (RF) signals**

Safe Handling & Recycling of Batteries

WARNING! Never dispose of batteries in a fire because they may explode. Do not disassemble, crush, puncture, heat, burn or reuse batteries. For more information, visit call2recycle.org or call 1-800-822-8837. Alternatively, visit www.samsung.com/recycling or call 1-800-SAMSUNG.

FCC Part 15 Information and Notices

This device complies with part 15 of the FCC Rules. Operation is subject to conditions: (1) This device may not cause harmful interference, and (2) this device must accept any interference received, including interference that may cause undesired operation. Operate devices that support wireless power sharing at least 8 inches/20 cm away from your body.

Emergency calls

Emergency calls may not be possible on all wireless mobile device networks or when certain network services and/or mobile device features are in use. Check with local service providers. If certain features are in use (e.g. call blocking) you may first need to deactivate those features before you can make an emergency call.

WARNING! Your Samsung device contains magnets. Keep it away from credit cards and devices that may be affected by magnets. Keep your Samsung device more than 6 in./15cm away from medical devices. If you suspect interference with a medical device, stop using your Samsung device and consult your medical provider.

Devices and related software are not intended to diagnose, cure, mitigate, treat or prevent disease or other health conditions. The ECG app is not intended for users under 22 years old or with known arrhythmias, other than atrial fibrillation, and is not intended to replace traditional methods of diagnosis or treatment. Users should not interpret or take clinical action based on the device output without consultation of a qualified healthcare professional.

Do not insert sharp objects into the Product's external holes. The inner components may be damaged along with the water-resistance feature.

Do not look directly at the optical bio-signal sensor lights. Doing so may impair your vision.

If the product becomes hot to the touch, remove it until it cools. Exposing your skin to the product's hot surface for a long time may cause low-temperature burns.

Samsung Electronics America, Inc.
85 Challenger Road
Ridgefield Park, New Jersey 07660
Phone: 1-800-SAMSUNG (726-7864)
Internet: www.samsung.com

© 2025 Samsung Electronics America, Inc. Samsung & Samsung Galaxy are registered trademarks of Samsung Electronics Co., Ltd. Other company and product names mentioned herein may be trademarks of their respective owners. Screen images simulated. Appearance of device may vary. Images shown are for reference only. If you use a screen protector, make sure it allows for use of screen features.